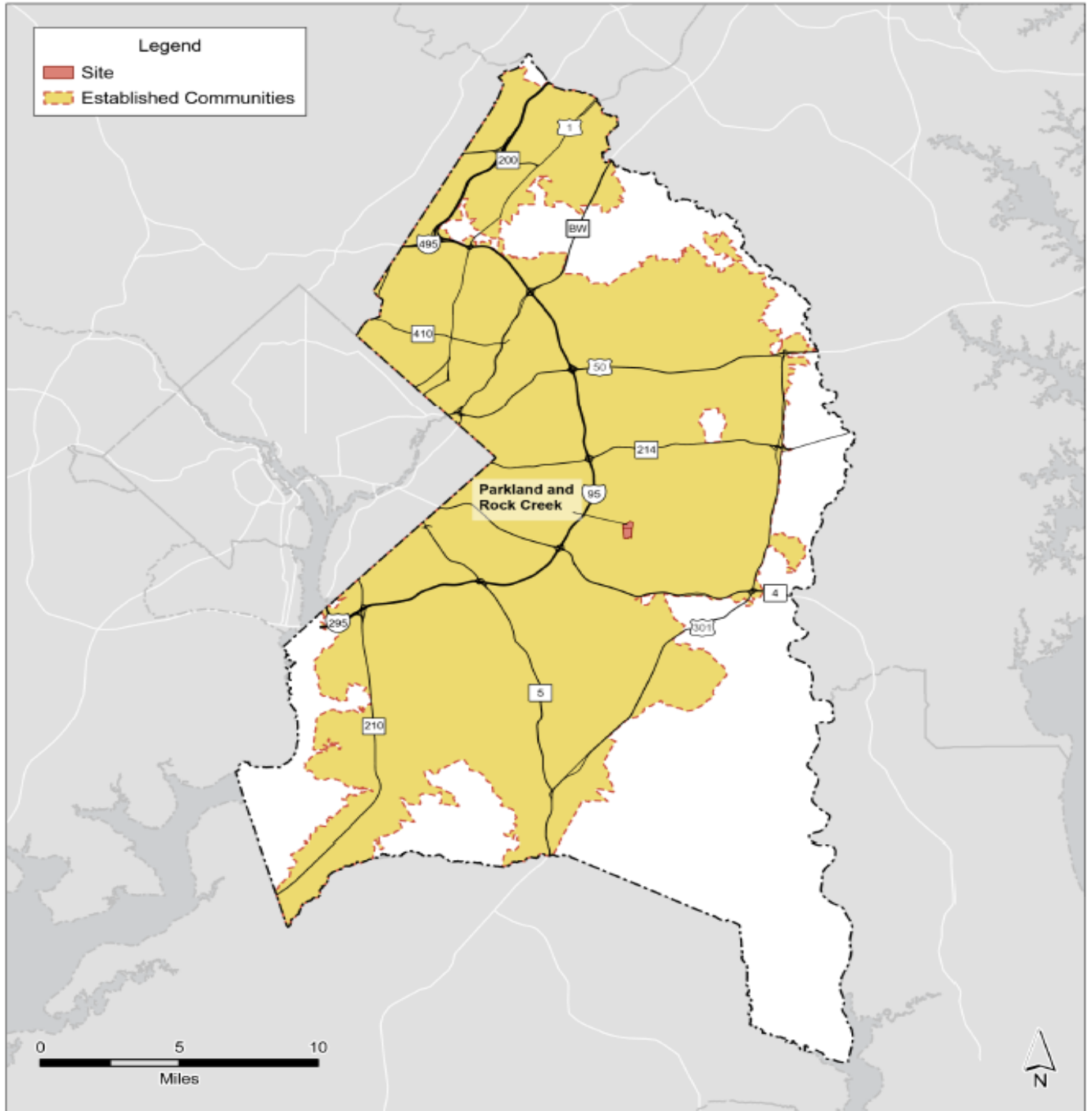


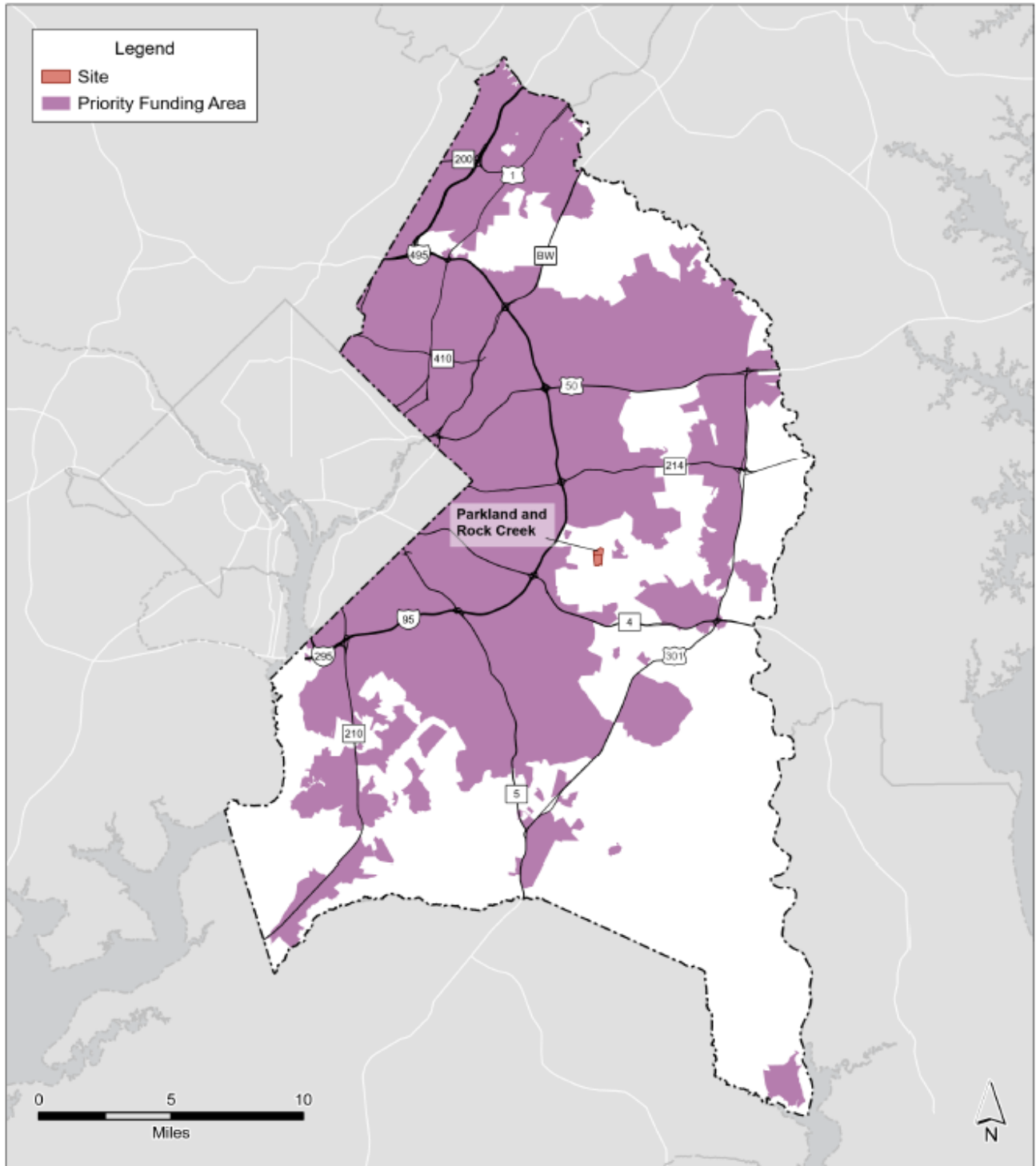
**Attachment 1: Prince George's 2035 Growth Policy Map**



**Parkland and Rock Creek  
2035 Growth Policy Map**

© M-NCPPC  
Prince George's County  
Planning Department  
Job #4686

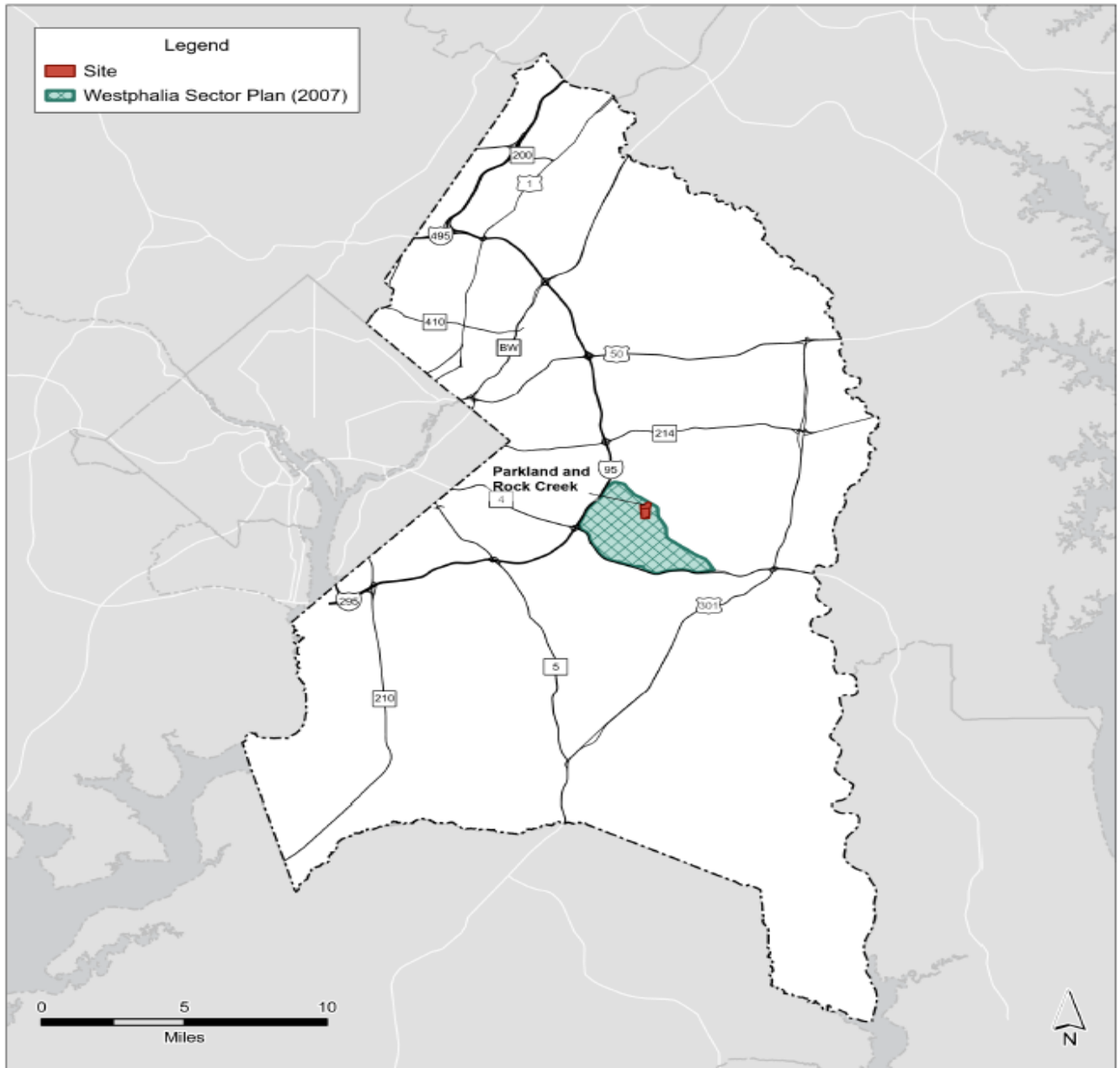
**Attachment 2: Prince George's Current PFA Map**



**Parkland and Rock Creek  
Priority Funding Area**

© M-NCPPC  
Prince George's County  
Planning Department  
Job #4686

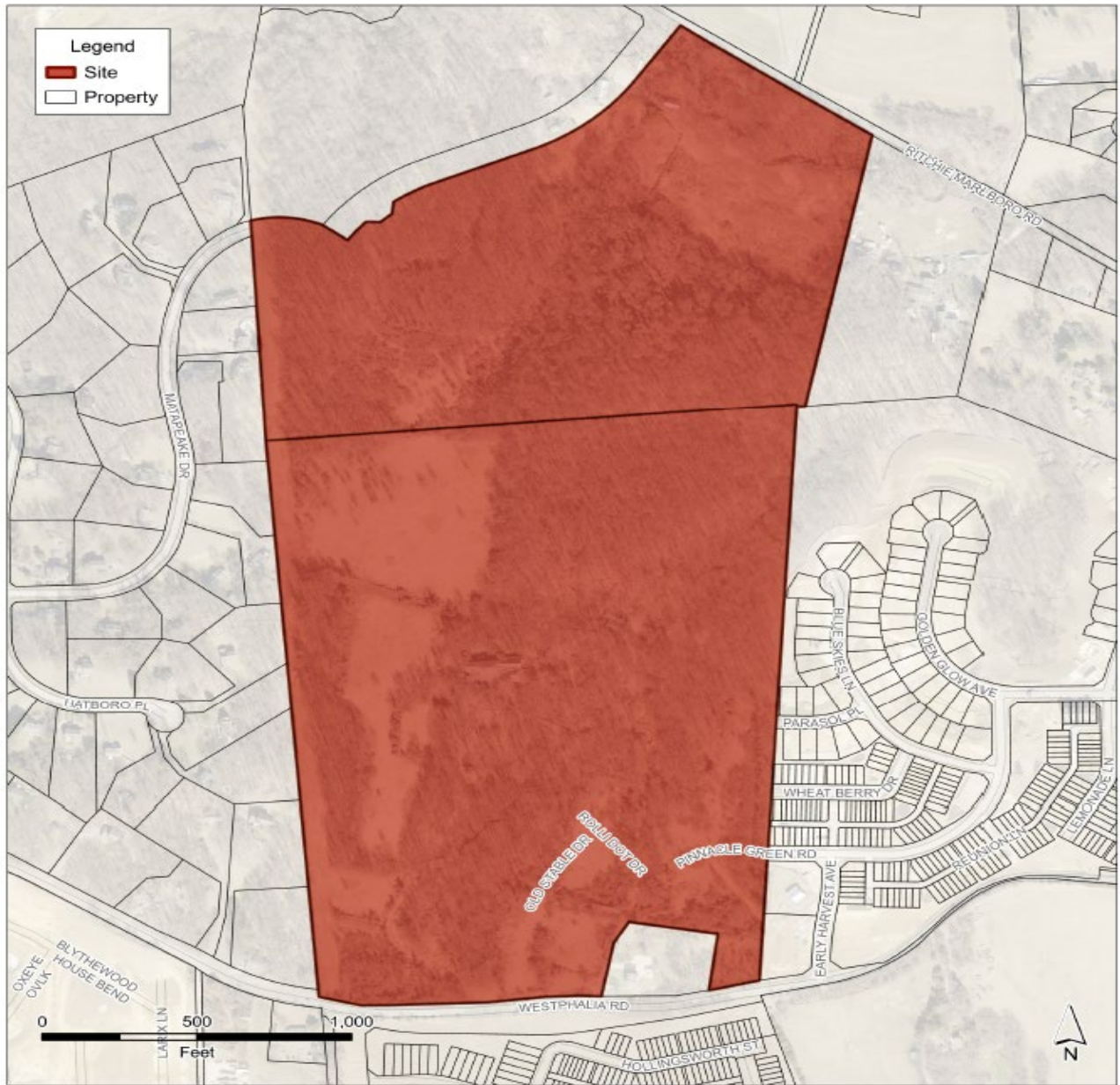
**Attachment 3: The Approved Westphalia Sector Plan Map**



**Parkland and Rock Creek  
Within Westphalia Sector Plan**

© M-NCPPC  
Prince George's County  
Planning Department  
Job #4686

**Attachment 4: The Proposed Focused Amended PFA Map**



**Parkland and Rock Creek  
Proposed Priority Funding Area Amendment**

© M-NCPPC  
Prince George's County  
Planning Department  
Job #4686