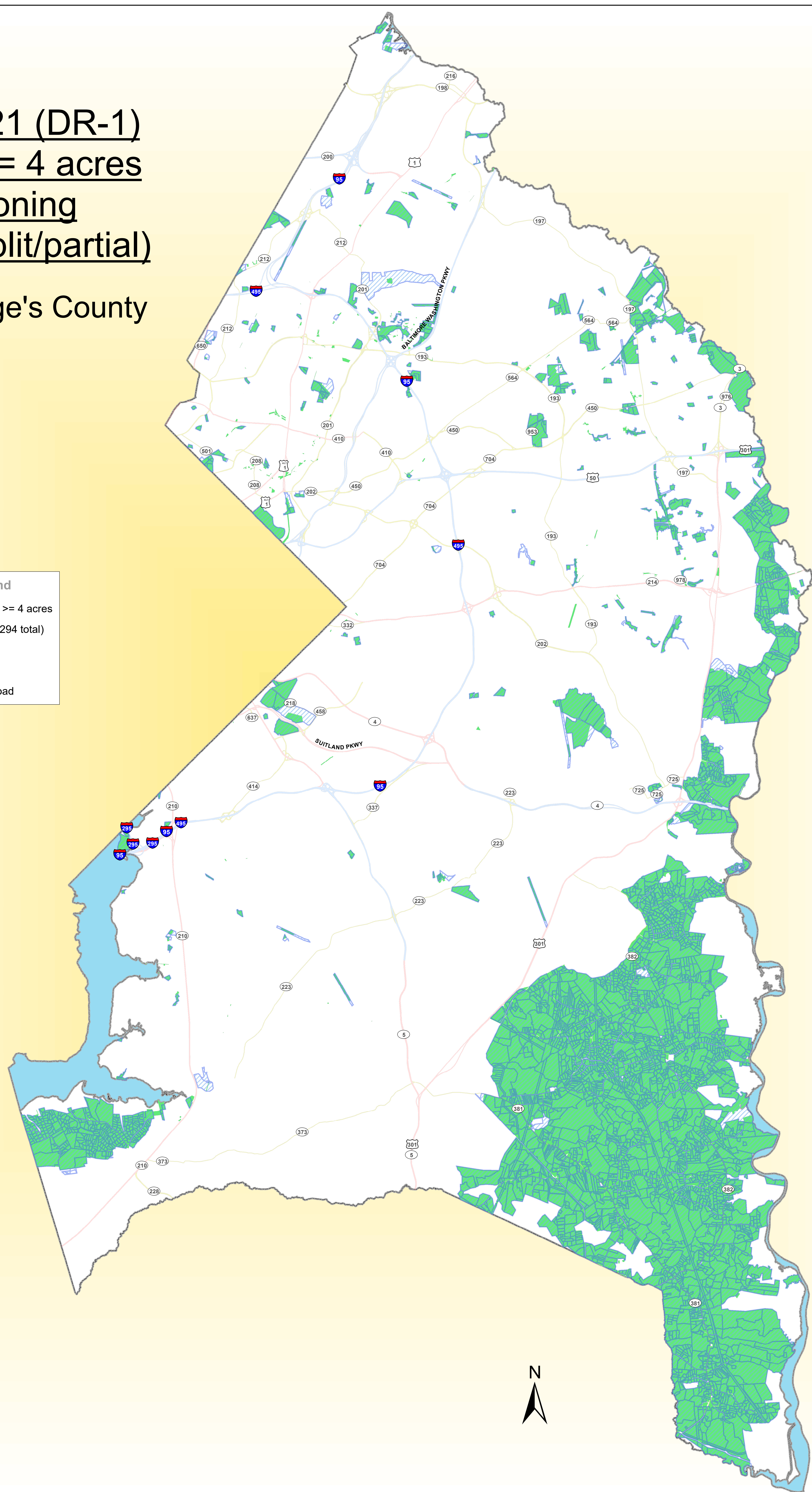

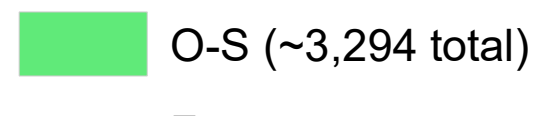
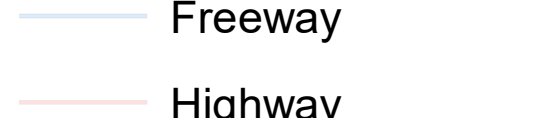
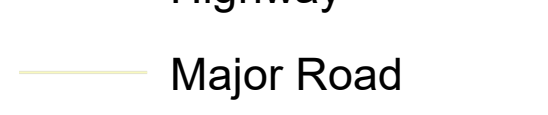
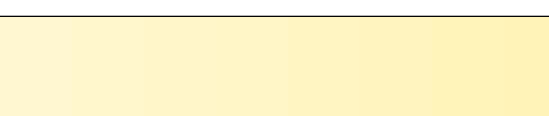
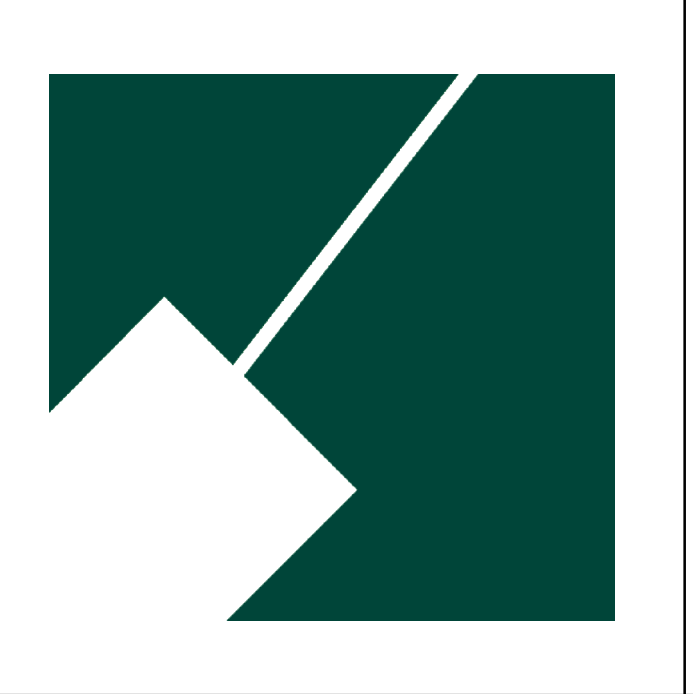
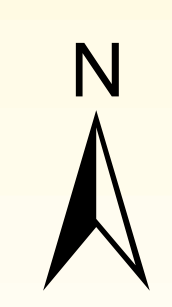


CB-13-2021 (DR-1)  
Property >= 4 acres  
O-S Zoning  
(whole & split/partial)  
 Prince George's County

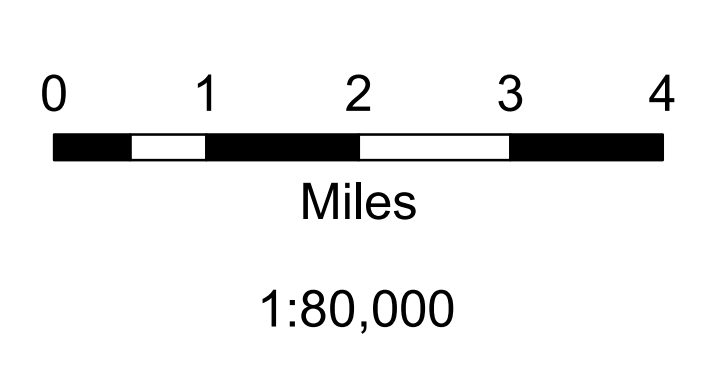


**Legend**

-  Property >= 4 acres
-  O-S (~3,294 total)
-  Freeway
-  Highway
-  Major Road



The Maryland - National Capital  
 Park and Planning Commission  
 Prince George's County Planning Department  
 Geographic Information System



Date Created/Delivered: 3/3/21  
 Author: Keith Wright  
 GIS Map & Data Request #: 9017  
 Archive: J:\GIS\_Projects\Keith.Wright\Requestsies...\_9017.zip

This map may not be reproduced, stored in a retrieval system, or transmitted by any form, including electronic or by photo reproduction, without the express written permission of The Maryland-National Capital Park and Planning Commission. For more information, contact the Prince George's County Planning Department in Upper Marlboro, Maryland.