



2010

*Final Report*

PRINCE GEORGE'S COUNTY, MARYLAND



## **SPECIAL ACKNOWLEDGMENTS TO**

---

COUNTY COUNCIL CHAIR, HON. THOMAS E. DERNOGA  
AND VICE CHAIR, HON. ANDREA C. HARRISON

ALL MEMBERS OF THE PRINCE GEORGE'S COUNTY COUNCIL

SPONSORS OF THE  
EQUINE INDUSTRY TASK FORCE LEGISLATION

*CR-29-2010*

*CR-47-2010*



COUNCIL MEMBER  
SAMUEL H. DEAN  
DISTRICT 6



COUNCIL MEMBER  
MARILYNN M. BLAND  
DISTRICT 9



COUNCIL MEMBER  
TONY KNOTTS  
DISTRICT 8



Mr. K. Teya Moore  
Chair

## Members & Staff



Mrs. Dorothy Troutman  
Vice Chair

---

### MEMBERS

- Bill Chambers**  
M-NCPPC Equestrian Center and Showplace Arena
- Sandra Crow**  
Citizens Advisory Board for the Equestrian Center
- Larry Hentz**  
Economic Development Corporation
- Harry Ketts**  
Horse Racing Industry
- Stephen Kensinger**  
Prince George's County Conference & Visitors Bureau
- Tom Mateya**  
Development Community
- Gary Michael**  
Development Community
- Pegeen Morgan**  
Maryland Horse Industry Board
- Valerie Ormond**  
Prince George's County Resident
- Erin Pittman**  
University of MD, Equine Studies
- Mardee Rochelle**  
Maryland Equestrian Foundation
- Robert Slade**  
Prince George's County Resident
- Rhonda Slade**  
Chamber of Commerce
- Vacant**  
Prince George's County Resident
- Bonita Williams**  
Office of the County Executive

### STAFF

- Jackie Brown**  
Planning Zoning & Economic Development  
Committee
- Barbara Stone**  
PZED Administrative Aide
- Kathy Canning**  
Legislative Officer
- Nellvenia Johnson**  
Legislative Aide to Council Member Dean
- Shelby McRae**  
Design Specialist, Office of Communications
- Mike Royer**  
Communications Specialist
- Maria Martin**  
M-NCPPC Countywide Planning

Law Offices of  
**Moore & Associates**  
12150 Annapolis Road      4800 Hampden Lane  
Suite: 104      Suites: 200  
Glenn Dale, MD 20769      Bethesda, MD 20814

---

Tel: (301) 493-9335      (301) 860 - 0885  
Fax: (301) 493-9334      (301) 860 - 0884  
E-Mail: [kkm@kteyamoore.com](mailto:kkm@kteyamoore.com)  
Web: [www/kteyamoore.com](http://www/kteyamoore.com)

K. Teya Moore, Esq.

Admitted In: NY, MD and DC

September 3, 2010

Prince George's  
County Council  
14741 Governor Oden Bowie Drive  
Upper Marlboro, Maryland 20772

**Re: Prince George's County Equine Industry Task Force Report**

Dear Councilmembers:

Please allow me to commend the Prince George's County Council for recognizing the equine industry as vital to the history, culture and economic prosperity of the county, its residents and surrounding communities.

The Equine Industry Task Force report to the council recommends the preservation of open space, pastoral settings and equine facilities for equine activities. A number of marketing initiatives and redevelopment opportunities to enhance the competitive viability of equine operations (large and small) and the county as a world class destination for equestrian activities are described in some detail. Several broad public policies germane to the industry were framed and included for the council to evaluate as part of the report.

While the report incorporates comments from the public regarding benefits derived from equestrian venues, agritourism and the inclusion of equine operations as a part of agriculture, the task force could not reasonably address all of the equine assets and resources situated throughout the county, some of which are noted and briefly discussed on the public forum transcript attached.

The public forum, held on August 19<sup>th</sup> to encourage comments from the community at-large, and the report itself reaffirms the need to dedicate more time and attention to the important role the industry plays in the lives of residents and businesses throughout the county.

Before concluding please allow me to once again thank the council and in particular the sponsors of CR-29-2010 and CR-47-2010 for their support, guidance and commitment to this noble and worthy endeavor. It was and remains my honor to serve the equine industry and the

K. Teya Moore, Esq.

September 3, 2010

Page 2

residents, council and administration of the county as chair of the Prince George's County Equine Industry Task Force.

My best regards,

A handwritten signature in black ink, appearing to read 'Teya', written in a cursive style.

K. Teya Moore, Esq.  
Chair of the Equine Industry Task Force

cc: Members, Prince George's County  
Equine Industry Task Force

# TABLE OF CONTENTS

---

## **Executive Summary** **8**

- Summary
- Right to Farm
  - Rationale
  - Public Policy
- The Prince George’s County Sports Commission
  - Rationale
  - Public Policy
  - Key Initiatives
- Environmental Impact Study Group
  - Rationale
  - Public Policy

## **Special Projects** **13**

- The Horse Park
- Master Plan

## **Marketing** **17**

- Defining the Market
  - Branding and State Coordination
- Media Strategy
- Website
- Event Planning
- Trail Mapping and Maintenance
- Education & Business Generation
- Reference A
  - Maryland Horse Facts
- Reference B
  - Websites
- Reference C
  - County Trail Resource Guide

## **Zoning and Land Use** **31**

- Zoning
- Equine Activities and Equine Facilities
- Agritourism
- Land Use Analysis
  - The Rural and Developing Tier
  - Preserving Open Space
- The Right to Farm
- Attachments

1. State Legislation
2. Proposed Legislation
  - Subtitle 27 - Zoning Ordinance
  - Subtitle 4 - Building Code
3. Land Use Analyses

**Environmental** **64**

**Unwanted Horses and Ethical Treatment of Equines** **66**

- Ethical Considerations in the Horse Industry
- Unwanted Horses
- Reference A
  - Welfare Code of Practice - American Horse Council
- Reference B
  - American Horse Publications Survey Data

**Public Forum** **74**

- Overview
- Transcript

**County Council Resolutions** **89**

- CR-29-2010
- CR-47-2010

**References** **99**



# **Executive Summary**

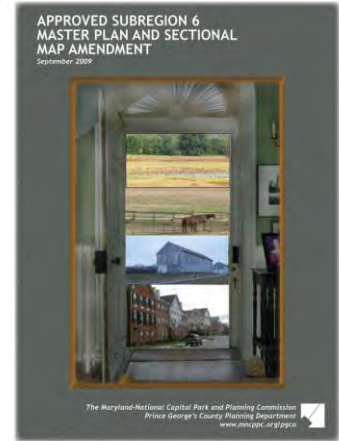


## THE PRINCE GEORGE'S COUNTY EQUINE INDUSTRY TASK FORCE

### (Executive Summary)

By resolution number CR-29-2010 introduced on March 30, 2010 (as amended under resolution number CR-47-2010 dated June 1, 2010, collectively, the “Enabling Resolution”), the County Council of Prince George’s County, Maryland established a seventeen (17) member Equine Industry Task Force to explore and facilitate the economic development potential of the equine industry in Prince George’s County (the “Task Force”).

On July 8, 2010, the Task Force convened to discuss the issues and strategies to preserve and sustain the industry based on the Approved Subregion 6 Master Plan dated January 2009 (the “Master Plan”) and the 2009 Maryland Horse Forum Report (the “2009 Report”). The Task Force placed each report in context before coalescing on the economic development potential of the equine industry in Prince George’s County and throughout the State generally.<sup>1</sup> At the next meeting on July 15<sup>th</sup> the Task Force narrowed its focus under the Enabling Resolution to three (3) overarching issues noted in the 2009 Report and one (1) predominate concern noted in the Master Plan: zoning, marketing, environment and the optimal use of the Prince George’s County Equestrian Center and Show Place Arena (the “PGEC”).



Members were assigned to subcommittees and asked to prepare a preliminary analysis for review by the Task Force before a final report was unanimously approved for submission to the Council by September, 2010. A “Special Projects” Subcommittee was established to recommend strategies to improve the competitive viability of the PGEC as a premier event facility in accord with Strategy 6.1 of the Master Plan. The “Zoning Subcommittee” explored a recommendation in the 2009 Report that localities adopt useful and workable guidelines to recognize various equine activities as part of the agricultural industry. A “Marketing Subcommittee” studied how best to promote and market the horse industry as discussed in the 2009 Report, in accord with Policy 6 and Strategy 7.3 of the Master Plan (to improve the understanding of the equine industry in the county by way of a marketing campaign). Manure management, emphasized in the 2009 Report as a critical concern for the equine industry, was explored by the “Environment Subcommittee” to assess options to improve equine operations. A brief but important report was prepared to highlight and discuss unwanted horses and the ethical treatment of equines. Each report with recommendations, along with comments from a public forum held on August 19<sup>th</sup> to solicit input from stakeholders and the community at large, is described below.

Several broad “Policy Initiatives” germane to the work of the Task Force are also emphasized and recommended to the Council including: (1) the “Right to Farm” and related measures, (2) a “Prince George’s County Sports Commission,” and (3) an environmental impact study group to explore management practices and methods to improve agricultural operations.

<sup>1</sup> Notice is given that the Maryland Horse Industry Board census of the industry is set for release by calendar year-end 2010, after the work of the Task Force is completed, which may satisfy Strategy 7.1 of the Master Plan.

## **A RIGHT TO FARM**

### **Rationale**

The Prince George's County Strategic Program for Agricultural Development outlined several recommendations to help preserve farms and farm land. The program recommends supporting farm friendly land use policies and programs such as strengthening right-to-farm protections.<sup>2</sup> The equine industry is vital to the history, culture and economic viability of the county and deserves the same level of protection afforded to farmers generally. Equine operations and related activities preserve the use of farmland and open spaces for agricultural purposes. Prince George's County has the fourth largest inventory of horses in the State of Maryland, with nearly 7,500 equines valued at over 60 million dollars. The myriad of breeds, disciplines and equine activities operate on 1,170 farms or similar open spaces covering 11,700 acres throughout the county.<sup>3</sup> The encroachment of nonagricultural land uses and activities into the Rural Tier or remaining open space throughout the county leads to inevitable conflicts and nuisance lawsuits. The "Right to Farm" law enacted by Prince George's County<sup>4</sup> was designed to protect farmers from nuisance lawsuits and should be strengthened and modified to include equine farms and related equine activities.

### **Public Policy**

The Right to Farm law should be amended to include equine activities as an agricultural operation. Nuisance lawsuits against agricultural operations conducted in accord with generally accepted industry practices should be discouraged as a means to preserve and sustain farms and the equine industry.

The Right to Farm law should be further amended to (1) adopt guidelines to establish generally accepted industry practices, and (2) encourage a change in the method of operation consistent with generally accepted industry practices.

Additional amendments to redefine "Agriculture," "Agricultural Land," "Agricultural Operation" and "Farm Building" as applied to the Right to Farm law and related measures should also have the support of the Agricultural Preservation Work Group, Soil Conservation and the Prince George's County Farm Bureau (collectively, the "Working Group"). The Zoning Subcommittee of the Equine Industry Task Force has proposed specific legislation noted within its report and should continue to coordinate this Public Policy effort with the Working Group to strengthen and modify the Right to Farm law as noted above.

---

<sup>2</sup> Prince George's County Strategic Program for Agricultural Development, 2009, pgs. 21-24.

<sup>3</sup> 2002 Maryland Department of Agriculture Equine Census

<sup>4</sup> Title 17, the Public Local Laws of Prince George's County, Subtitle 30, Agriculture, Division 1 - Right to Farm.

## **THE PRINCE GEORGE'S COUNTY SPORTS COMMISSION**

### **Rationale**

A meaningful economic development opportunity exists for Prince George's County to enhance the area's image worldwide, provide outstanding entertainment and participatory opportunities, and contribute to the quality of life of its residents through the attraction, promotion, retention and development of local, regional, national and international sporting events. Other municipalities or jurisdictions that compete to attract and host national and international sporting events successfully rely on a representative body or commission to coordinate a collaborative strategy. Prince George's County would benefit from a similar marketing effort to promote a unique array of first class sporting venues in the county from the Prince George's County Equestrian Center and Show Place Arena to FedEx Field. A representative body or "Prince George's County Sports Commission (CSC)" would help brand and strengthen the competitive viability of the county and capitalize on these existing assets.



### **Public Policy**

The CSC would coordinate a sophisticated marketing strategy on behalf of Prince George's County and its participating venues and serve as the first point of contact to attract and support major sporting events and sports-related activities throughout the county. Each venue would benefit from a pooling of resources and serve as the epicenter for commercial development and a source of enhanced revenue for the surrounding community.

A non-profit government sponsored entity would be the entity of choice charged with promoting the county as a premier destination for professional, amateur, and scholastic sporting events. We recommend the CSC charter documents and enabling legislation guarantee the continued use of the PGEC as an equine facility used primarily albeit not exclusively for equine or equestrian activities before moving forward with this public policy initiative.

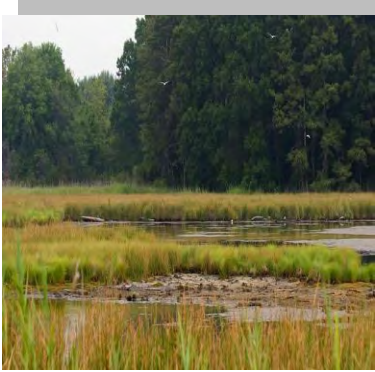
### **Key Initiatives**

- Stimulate economic development and elevate the image of the county through the promotion and attraction of major sporting events and related programs at existing venues in Prince George's County, including support for local venues, teams and historic or reoccurring events.
- Encourage cooperation and collaboration among sporting venues, the county, hospitality industry and the surrounding business and local communities to compete on a national/international stage.
- Promote the sustainability and adaptive re-use of existing venues, community redevelopment, cultural arts, and civic pride.
- Offer unparalleled access to existing venues and county agencies for event planning purposes.

## **ENVIRONMENTAL IMPACT STUDY GROUP**

### **Rationale**

The Chesapeake Bay and its tidal tributaries have around 11,684 miles of shoreline—more than the entire U.S. West Coast. Almost the entire State of Maryland (94%) and all of the land used by the equine industry in Prince George’s County is located in the Chesapeake Bay Watershed. The 2009 Maryland Horse Forum Report recognized the implementation of best management



practices as a vital part of the mission of the horse industry. The process of “greening the horse industry” will be a long and complex process that will require cutting edge technologies such as bio-filtrations systems or bio-fuels and the re-evaluation of current programs for removal or composting of manure. A concerted effort is required to promote open space preservation and the implementation of soil conservation, water quality plans and best management practices to buffer run-off into the Bay and improve the removal or reduction of phosphorous, nitrogen and other pollutants from agricultural operations including equine activities. The equine industry as well as the Agricultural

Preservation Work Group and the Maryland State and Prince George’s County Farm Bureaus along with experts from the University of Maryland (UM), including UM Extension, Soil Conservation, US Natural Resources Conservation Service, Maryland Horse Industry Board, Maryland Horse Council, the Chesapeake Bay Foundation, animal control and nutrient management technicians and the Maryland State Department of Agriculture and Department of Natural Resources (collectively, the “Study Group”) should come together to recommend "low impact development" technologies and other measures to improve agricultural operations.

### **Public Policy**

The Study Group should recommend nutrient management plans along with specific educational programs for all agricultural operations to better manage the amount, placement, timing, and application of animal waste, commercial fertilizer, sludge, or other plant nutrients to prevent pollution by transport of bioavailable nutrients. Each recommendation should be based on the best available research and scientific data so as to permit the maximum use of nutrient and soil conditioning values, while achieving the least possible adverse impact on the environment.

The Study Group should evaluate and report on the benefits of a public-private venture to establish a receiving facility for manure in the county or whether such a facility should be maintained without public or private funds or discarded entirely.

Tax or similar incentives should be evaluated to encourage best management practices for agricultural operations including, without limitation, the handling of manure, agricultural compost and chemical fertilizer.

A process to investigate complaints of improper handling of manure, agricultural compost, and chemical fertilizer, including complaints of improper storage and spreading, should be explored.



# **Special Projects Subcommittee**

## **SPECIAL PROJECTS SUBCOMMITTEE REPORT**

The Special Projects Subcommittee discussed several venues or projects to improve the competitive viability of the horse industry in Prince George’s County. The subcommittee decided to focus its efforts on the optimum use of the Prince George’s Equestrian Center and Show Place Arena (PGEC) since this was recommended by both the Subregion 6 Master Plan (Master Plan) and the 2009 Maryland Horse Forum (Horse Forum).



Two strategies to achieve optimum use are given below—a long-term approach and a short-term approach. The long-term approach would implement the Horse Forum Resolution to build a horse park in Maryland similar to the one in Kentucky. The short-term approach would implement both Strategy 6.1 of the Master Plan and a resolution of the Horse Forum: Improve the equestrian facilities at the Prince George’s Equestrian Center to compete with similar equestrian facilities in the Mid-Atlantic with a focus on reestablishing the Prince George’s Center as a premier show and event facility.

### **THE MARYLAND HORSE PARK**

The Maryland Horse Industry Board continues to seek a site for the Maryland Horse Park as a means to enhance and capitalize on the tremendous economic potential of the horse industry throughout the State of Maryland. The 2009 Maryland Horse Forum Report highlighted the “Horse Park” as a priority for the horse industry and the State.

Much of the infrastructure required for the Maryland Horse Park already exists in Prince George’s County. The projected costs to convert the PGEC site and its assets in combination with nearby Rosaryville State Park would be significantly less than the proposed \$114 million for an undeveloped site.

The PGEC has been the center of activity for the performance horse industry in Prince George’s County for some time. It hosts over one hundred local, regional and national equine shows annually and is nationally renowned as a major horse show facility with a state-of-the-art indoor arena, exceptional footing and superior equine client services.

On site amenities at the PGEC include:

- A five thousand seat deluxe indoor arena with three banquet/social rooms and several elegant sky suites overlooking the arena
- A deluxe food pavilion with restrooms and a landscaped eating area
- A modern two-story show administration and judges structure with glassed viewing areas, elevator and restroom
- A new artistically designed covered arena with restrooms and eating area
- Three lighted outdoor competition rings with warm-up areas

- 260 permanent stalls with space for another 1,500 stalls
- 36 permanent RV sites with additional space for 60
- Outdoor bleacher seating
- On site truck and trailer parking
- Parking for 2,000 cars

Accessibility to the PGEC is superb. It is located just off Route 301, an interstate highway, and near I-495, the Capital Beltway. Pennsylvania Avenue Extended (MD Route 4) overlooks the arena and is the only road in the area that goes directly to the White House. Suitland Parkway, which is off Route 4, leads to Washington, D. C. and the United States Capitol. The site is also convenient to Annapolis and Baltimore and is seven miles from I-95. It is in a safe and secure rural setting with easy access to ten thousand hotel rooms within a twenty mile radius.

Rosaryville State Park, situated in a pastoral setting encompassing over 1,000 acres off Route 301, is in close proximity by motor vehicle to the PGEC.



The Marlborough



Horse Trials, a recognized combined training event, have been held at the park since 1993 on courses designed by Roger Haller, who designed the Olympic course in Atlanta. This event brings competitors from Florida to New England. Two covered pavilions and restrooms have been

constructed in the park by the Maryland Department of Natural Resources, with roads to access them. Many miles of equestrian trails have already been built and are maintained at the park.

The two combined sites would minimize the traffic congestion of only one site. Existing facilities would reduce development, infrastructure and maintenance costs while maximizing the economic benefits to the county and the State of Maryland. The natural synergies and the location would meet the requirements that the Maryland Horse Park be an attractive tourism destination for out-of state visitors and appeal to the large horse show market on par with similar venues across the country.

### **RECOMMENDATIONS:**

1. The subcommittee recommends a bid to the Maryland Horse Industry Board to locate the Maryland Horse Park in Prince George's County by combining the existing facilities at the PGEC with the extensive land and facilities at Rosaryville State Park.
2. The subcommittee recommends the establishment of a development team to formulate such a bid to include representatives from the Maryland-National Capital Park and Planning Commission Department of Parks and Recreation, the Maryland State Department of Natural Resources and General Services, Real Estate Division, the Prince

George's County Revenue Authority, and the local horse industry. A number of members of the Equine Industry Task Force should be given consideration if available.

### **MASTER PLAN**

Priority should be given to completing a Master Plan for the entire PGEC and implementing it. Improvements made to retain present users and to attract large shows would generate the biggest economic impact to the county.

The Master Plan should take into consideration better utilization of the land available to the PGEC and necessary improvements required to both enhance the attractiveness of the facility and expand the types and size of equestrian events that can be accommodated at the facility.

The new covered arena will be a big attraction and useful addition, but more stabling is essential. Campgrounds should be expanded and upgraded, with additional water hookups and more power for electrical outlets. Plans should be developed for better use of the infield, the old Marlboro Race Track, and the parking areas. Detailed plans for better utilization and more efficient use of space are essential.

The Master Plan should also move forward with the previous decision to evaluate and recommend a site to locate a hotel with adequate accommodations and parking in close proximity for the optimal use of the PGEC as a premier equestrian event facility.

### **RECOMMENDATION:**

The subcommittee recommends encouraging the Department of Parks and Recreation of the Maryland-National Capital Park and Planning Commission to complete the Master Plan for the PGEC at the earliest date possible and proceed to implement it in order to reinforce the PGEC's reputation as a first class venue. Time is of the essence.





# **Marketing Subcommittee**

## MARKETING SUBCOMMITTEE REPORT

The recommendations of the Marketing Subcommittee of the Equine Industry Task Force are aligned with the policy and strategies noted in the Prince George's County's Subregion 6 Master Plan and Sectional Map Amendment January, 2009 (the "Master Plan")<sup>5</sup> and the 2009 Maryland Horse Forum Report (the "2009 Report").

### DEFINING THE MARKET

The marketing discussion begins with defining the market, and for the equine industry in Prince George's County, the market is wide. The industry covers all disciplines of riding and every age group that participates in equine activities.

Marketing all that Prince George's County has to offer in the equine industry will greatly improve our ability to be more competitive on both the National and International levels. Attracting this caliber of equine activities is the best way to increase the revenue generated per person in attendance at local facilities during their stay in Prince George's County.

A survey conducted by the American Horse Council in 2005<sup>6</sup> showed the following statistics:

Distribution of Horse Owners by Age in Maryland

Age	Count	Percent
18 to 29	3,946	17%
30 to 44	6,606	28%
45 to 59	11,314	47%
60+	1,570	7%
Not Reported	407	1%
<b>TOTAL</b>	<b>23,843</b>	<b>100%</b>

Horse owners between 30 - 59 years of age represent a significant portion of the market (75%) and, therefore, must be considered in promotional and marketing materials. There may also be a large market for the "baby boomers" in the County who now have an opportunity to return to what it is they wanted to do. Many of the local riding stables, the Old People's Riding Club, the Maryland Show Association and the Southern Maryland Horse Show Association, have a large portion of their students and competitors in the "over 30" category.

---

<sup>5</sup> Prince George's County's Subregion 6 Master Plan and Sectional Map Amendment: (A) Strategy 6.3: Develop a marketing and education program to promote the industry and improve the community's understanding of its role in the local economy and opportunities for recreational uses and enjoyment; and (B) Strategy 7.3: Develop and implement a marketing campaign in collaboration with the recommended agricultural marketing program to recruit additional equine operations and retain existing operations. See, Master Plan, January 2009, pg. 150-152

<sup>6</sup> The economic study was done by Deloitte Consulting LLP for the American Horse Council Foundation in 2005. More information on the overall study can be found at <http://www.horsecouncil.org/nationaleconomics.php> where data can be viewed by State.

With National Harbor just miles up the road from many equine activities, adult programs such as “A Day in Horse County” could target mature riders and with proper planning could include an equine-related tour of the Belair Stable Museum, the Bowie Library’s Historic Collection, an active thoroughbred breeding farm, the Prince George’s Equestrian Center (PGEC), and other facilities that wish to participate.

Children and young adults are the future of the equine industry in Prince George’s County. A successful marketing strategy must target this market and work with youth groups in the County to publicize and promote equine activities in the County. Children can engage in equestrian activities as early as 4 to 5 years of age even when they do not own their own horse, or live on a farm. Lessons are available at local facilities. Local shows occur at the Equestrian Center almost every weekend in the summer time. A viable marketing campaign should target and support activities with 4-H Extension, the Prince George’s County Youth Commission, the Pony Club and other organizations such as Boys and Girls Club, the Boy Scouts, Girl Scouts, youth camps, and activities such as “Horse Science Camp,” held at the PGEC to introduce young people to horses.



Other programs or activities such as the “Horse Club” at Cornerstone Christian Academy, the National Capital Equitation League (NCEL)<sup>7</sup> and the Interschool Horse Show Series (ISHS)<sup>8</sup> are notable for offering children the opportunity to be around horses that their parents stated they would not have had otherwise.



<sup>7</sup> Founded in 1979, NCEL is currently comprised of 30 teams from the Washington, D.C., metropolitan area, ranging from the Short Stirrup team, average ages seven and above, to the “A” and “B” teams, with average ages approximately 14-18, up to the Adult teams, ages thirty and above. Prince George’s County is home to 10 of these teams, comprising one-third of the League, and has been active since the founding of the League, focused on novice riders. It should be noted that to participate in both the NCEL and the Interschool Horse Show Series, discussed next, that riders do NOT have to own their own horses, and were designed with that factor in mind. Many non-horse owner riders who have participated in these programs would not have had the opportunity for this level of competition had it not been for these programs.

<sup>8</sup> The Interschool Horse Show Series (ISHS), established in 1995, offers riders in grades 6-12 equestrian competition opportunities at both the junior and varsity levels. Four Prince George’s County middle schools and high schools compete in the series, and two Prince George’s County barns host ISHS teams. The ISHS openly welcomes additional teams, and a school can join the competition with as little as one team member. An additional tie to Prince George’s County for the ISHS is its annual ISHS Mary Loftus Sportsmanship Award provided each year to the varsity rider who shows exemplary sportsmanship both in and out of the show ring. This award was named for Prince George’s County resident Mary Loftus who dedicated much of her life to equine activities and believed strongly in the linkage between sportsmanship and horsemanship. Support for programs such as the ISHS in County schools and in County barns introduces youth to equine activities not just from the competitive aspect but also from the responsibility of caring for horses and animals at an early age. Additional information on either of these competitions can be found on their websites at <http://www.ncel.us.com> and [www.interschoolhorseshow.org](http://www.interschoolhorseshow.org).

**RECOMMENDATIONS:**

1. Use surveys to ensure established markets are well defined and considered.
2. A marketing strategy to encourage equine activities for children and young adults.
3. Improve on our ability to be more competitive at National and International levels.

**BRANDING AND STATE COORDINATION**

Branding Prince George’s County as a destination for equine activities in the State of Maryland is a vital feature of a strategic marketing campaign. We begin the discussion with marketing strategies to improve the competitive viability of the Prince George’s Equestrian



Center as a premier show and event facility in accord with Strategy 6.1 of the Master Plan. The 2009 Maryland Horse Forum Report (the “2009 Report”) also recommended “more use and greater facility development of the PGEC.” The center currently has difficulty finalizing deals with larger show promoters due to one or more components of the facility not being adequate, (too few stalls, existing rings are too small for a show) or the ability to attract an opportunity and remedy the concern in the absence of funding or support for the event. As part of our due

diligence, the committee was informed that (1) certain show producers have cited security concerns with public access to portions of the PGEC, and (2) the new outdoor covered arena at the PGEC, when complete, could provide an outstanding alternative for winter riders and a venue for local equestrians to gather for informal rides.

A road signage program would increase public awareness of the many facilities available in the County. One of the summary recommendations from the 2009 Report concluded: “All relevant state agencies, including the SHA [State Highway Administration] should work with the MHIB [Maryland Horse Industry Board] to create a coordinated state-level signage effort, to promote public equestrian facilities, breeding farms, equestrian parks, spectator events, and any equine operation in a land preservation program.”

**RECOMMENDATIONS:**

1. Appropriate security measures such as additional fencing and security personnel are undertaken to support worthwhile events at PGEC. The economic benefits of hosting such events must outweigh the costs to secure the site.

2. Prince George's County should adopt a logo and a slogan similar to the slogan successfully used by Baltimore City to wit, the "BELIEVE" campaign<sup>9</sup>.
3. Relevant County entities should coordinate with the MHIB to ensure Prince George's County is included in any state-level marketing campaign. The Maryland Horse Council could also provide assistance to the County in this effort (at no cost) in identifying properties that should be included in a signage program.<sup>10</sup>

### **MEDIA STRATEGY**

Many pertinent facts regarding the Prince George's County equine industry, history, and heritage are not widely known or properly used to promote the industry.

Prince George's County has a very long standing history of equine activities that should be told and mapped. The County should recognize this and publicize events open to the public to provide County residents and tourists with a unique experience of our County's heritage. This type of information needs to be available for individuals interested in seeing, for example, where some of the great names of thoroughbred racehorses were trained in Prince George's County or to locate stables where President Grover Cleveland boarded two of his Arabian Horses. The website at the Prince George's County Equestrian Center can be the one destination to direct interested individuals to the vast history of equine activities in the County.

Equine activities held at the PGEC are also not well publicized. Local newspapers circulating within and outside of the County (e.g., The Bowie Blade, The Capital, Bay Weekly) should be relied on to promote local equine activities and events to attract spectators and inform the public of the many activities within the county. This type of coverage is free of charge, other than the investment in man-hours to provide the scheduling information to the media. The committee also believes opportunities exist for the PGEC to implement newer-technology communications such as e-newsletters and advertisement on social networking sites to publicize its events open to the public. We encourage the use of surveys and similar tools from time to time to secure feedback from patrons and sponsors of the local shows already occurring.

### **RECOMMENDATIONS:**

1. A coordinated media strategy between PGEC and M-NCPPC media relations to build relationships with local reporters and to implement a media relations strategy to maximize coverage of equine activities in Prince George's County. We encourage the PGEC and M-NCPPC to meet regularly to enhance marketing material and coordinate a media relations strategy to ensure the website and other media outlets are being fully utilized.
2. Periodic inserts in local newspapers such as the Gazette newspapers to advertise events at the PGEC and equine activities throughout the county. Insert sections would effectively

---

<sup>9</sup> The "Baltimore BELIEVE" campaign was created to fight drug abuse. According to its sponsors "The BALTIMORE BELIEVE campaign [was] an unprecedented attempt to change the mindset of a city....about fighting urban drug abuse

<sup>10</sup> Statement of support from Maryland Horse Council for Equine Industry Task Force Initiatives, March 2010

enhance the marketing campaign and promote the PGEC, local events, trails/parks and the industry. The cost can be significantly defrayed by selling advertisement space.

3. Highlight both County and State industry statistics to the public in media forums to continue to educate and inform the public about the horse industry in Prince George's County. A draft example of a fact sheet is attached as Reference 3A.

### **WEBSITE**

The Marketing Subcommittee reviewed State, County and other websites involving equine activity in Prince George's County. No one-stop site provides user friendly information on horses, riding, trails, lessons, or events in Prince George's County. Navigating existing county websites does not effectively link users to pertinent information. They are also not very effective in promoting the PGEC, local Parks or activities.

### **RECOMMENDATION:**

A complete change to the PGEC's website to include the following:

The site should be the place that local residents and tourists look to get the most current information on equine and equestrian information in the County and State, and link to other websites. This should be the primary responsibility of the Administrative Staff of the PGEC not MNCPPC.

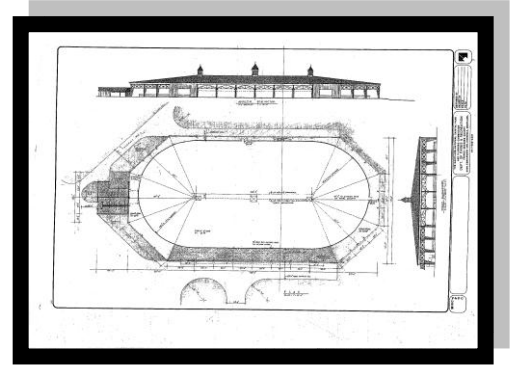
The site should be updated regularly with upcoming events, links to equine and equestrian activities in the park system, local events throughout the County and the PGEC. Initially most of the content will be provided to increase site traffic, but as the site becomes more popular, the PGEC could sell ad space and links to the site, for everything from feed, veterinary services, farrier services, boarding facilities, lesson facilities, trailer sales and other "for profit" businesses that affect the equine industry in the area. It is crucial that the site have sufficient content to attract attention and provide the most up to date information on shows, local trails and parks, and engage our citizens on all aspects of the equine industry in Prince George's County.

Trail Maps, guides and other publications that are published and distributed in the area can be made available for download on the website. There are some very nice guides that the committee uncovered, but again, they are spread out all over the place, and are difficult for one person to locate very easily. The Marketing Subcommittee compiled a list of proposed equine-related websites to include in the County's central location to assist residents and visitors, attached as Reference 3B.



## EVENT PLANNING

Optimal use of the PGEC is the primary focus. Currently the PGEC is home to the Capital Challenge, Potomac Valley Dressage Association's Ride for Life, Bill Pickett Rodeo and a number of other very large equestrian activities or events. PGEC also hosts the oldest horse show in the State of Maryland – the Maryland Horse and Pony Show, which has been in existence for more than sixty-five (65) years. These events are, however, under marketed and could draw significant patrons or exhibitors from neighboring counties and states.



Prince George's County Equestrian Center

Prince George's County also has been home to one of the premier horse trials in the state, –The Marlborough Horse Trials” at Rosaryville State Park. It is Southern Maryland's first United States Combined Training Association approved horse trials. The event currently attracts over 200 riders from throughout the Mid-Atlantic region. Although the revenue to participate in the Marlborough Horse Trials does not contribute directly to the county, the participants spend money in the county. This event could become a premier spectator event for the county. The type of riding in this event is similar to the Olympics.

### RECOMMENDATIONS:

1. A concerted effort to reinvest in the PGEC and to celebrate the diversity of equine activities in the county on par with a –Horse Park” or similar complex to establish and brand the center as a destination for many more –flagship” equestrian activities or events.
2. Naming rights (ex: Verizon Center or Fedex Field) should be revisited to attract additional income for the facility.
3. Events such as –Marlborough Horse Trials,” should be highlighted in an overall marketing campaign to showcase the County's facilities and destination for Eventing.

## TRAIL MAPPING AND MAINTENANCE

Prince George's County offers citizens and tourists a wide variety of parks. Maps are available at various locations for free, or a small fee, but again, no one place to access all the –current” maps is readily available. The maps do not always denote trails specifically designed for horseback riding or other equine activities.

M-NCPPC while updating current marketing material for its park system should take into consideration enhanced resources for the equine industry. Parks should better define trails that are designed for horses and adequately display in the parks the –right of way” courtesy posted in State parks to alert all users of the importance of yielding to riders on horseback.

While the Task Force understands the need for multi-use trails to meet the needs of various groups, consideration should be given to designing part of an existing park to mirror

Woodstock Equestrian Center in Montgomery County, Oak Ridge Park in Charles County, or Maxwell Hall in Charles County. Both Woodstock Equestrian Center and Maxwell Hall were designed with equestrians in mind, and are open only to equestrians and hikers. Maxwell Hall, for example, provides equestrians five separate trails with varying degrees of difficulty, a cross-country jumping course and a unique trail obstacle course. Maxwell Hall is so popular that it does not need to be advertised; riders seek out this park, and it is mostly known to visitors via word of mouth. With over 26,000 acres of parkland, the M-NCPPC should develop an equestrian/hikers only park or designate such within one of the existing parks in Prince George's County.

Maintaining trails sometimes occurs without consideration for the equine rider. Trails in the Patuxent River Park system suffered some erosion years ago, and the "fix" to the erosion actually created some hazardous situations for horses. It is important to consider all users of park trails in planning new trails, or in correcting problems on an existing one. The horse industry should also have consistent representation on the County's Bicycle Trails Advisory Group, as most trails in the county are mixed-use trails.



There is only one guided trail ride facility left in the county, Piscataway Stables in Clinton. Twenty years ago, Prince George's County could have offered numerous guided trail riding opportunities to locals and visitors. Although it is difficult to find historical data explaining the demise of this part of the industry, anecdotally the closing of those trail ride operations is attributed to liability issues. Perhaps the agritourism industry will be able to fill part of the gap to allow those who do not regularly have access to horses the ability to enjoy them up close in a country-like setting.

### **RECOMMENDATIONS:**

1. Prince George's County should establish additional equestrian facilities in the park system.
2. M-NCPPC should coordinate with Maryland State Department of Natural Resources and MHIB to implement the 2009 Report regarding the maintenance and upkeep of trails in the County. We strongly encourage efforts underway within M-NCPPC to provide public access to [www.pgatlas.com](http://www.pgatlas.com) and the Geographic Information System on line. Once complete, those maps and links should be highlighted in the PGEC master website.
3. County, State and National resources should be made available at the PGEC website and hard copies provided at the facility and at the Prince George's Conference and Visitors Bureau. A proposed list for inclusion, compiled by the committee, is attached as Reference C.



## **EDUCATION & BUSINESS GENERATION**

Prince George's County should take advantage of the numerous local resources, coupled with state programs currently available, to meet educational, business development, work force and capital needs.

The county should foster collaborative equine and related research programs by and among various post-secondary educational institutions (e.g., Prince George's Community College, Bowie State University and University of Maryland). Vocational high school programs should also be explored. The Prince George's County Youth Commission should be canvassed to determine if there might be enough interest at the young adult level to pursue such efforts.

On the county level, the Prince George's County Economic Development Corporation (EDC) Small Business Initiative (SBI) can offer direct assistance to small and minority/women-owned equine industry businesses located in the county. The SBI can offer entrepreneurial training, management consulting, and access to capital. The EDC Workforce Services Division can provide workforce intelligence and solutions for the equine industry job seekers and business owners by providing a demand-driven system that delivers qualified workers to business owners and provides job seekers with opportunities for careers in the equine industry. FSC First, a Certified Development Corporation (CDC) and non-traditional lender can provide creative, flexible and innovative business financing solutions to small and minority/women-owned equine industry businesses.

On the state level, the Maryland Department of Business and Economic Development (DBED) promotes the state's many economic advantages and markets the state's businesses, products and services. DBED can encourage the expansion and retention of existing equine industry businesses and provide work force training and financial assistance to these Maryland companies. DBED Office of Small Business can promote the development of small and minority/women-owned equine industry businesses by connecting them to the appropriate resources, provide information and offer assistance with everything from permits and licensing requirements to procurement.

### **RECOMMENDATIONS:**

1. Encourage collaborative and accredited equine and related research programs by and among various post-secondary educational institutions.
2. Place EDC and DBED resources/contact information on the PGEC master website.
3. Establish a program similar to the Black Stallion Literacy Program, which had a trial run ten years ago in Prince George's and Montgomery Counties, to familiarize our youth with horses and ties to the area's equine heritage at an early age<sup>11</sup>.

---

<sup>11</sup> The Goal of the Black Stallion Literacy Project is to use the magic of live horses and books by Walter Farley, to spark the imagination of first grade students so they will want to learn to read, and to motivate fourth grade students so they will come to learn the enjoyment of reading. See also [www.bslp.org](http://www.bslp.org).

**REFERENCE A**

Prince George’s County Equine Facts

1. Prince George’s County has the 4<sup>th</sup> largest inventory of horse in the state, with 7500 horses valued at \$63 million, housed, trained, or otherwise maintained on 1,170 equine operations covering 11,700 acres.<sup>12</sup>
2. 27 Licensed stables listed in the Maryland Stables Directory<sup>13</sup>
3. Equestrian activities dated to the period of the earliest settlement by Europeans
4. Horse breeding and sale of horses for racing back to the 18<sup>th</sup> century
5. At least 11 historic properties related to equestrian heritage
6. National, State, and County equestrian trails<sup>14</sup>
7. An active fox hunt club since 1936<sup>15</sup>
8. University of Maryland and Extension Program’s world-renowned Equine Studies Programs and facilities
9. The Prince George’s Equestrian Center – host to 105 horse events annually, including the Capital Challenge and the local portion of the Washington International Horse Show<sup>16</sup>
10. Bowie Training Facility, the former Bowie Race Course
11. Marlboro Ridge – one of the first equestrian home developments in the state
12. Ten equestrian teams in the National Capital Equitation League
13. At least three participating schools in the Interschool Horse Show Series
14. Thousands of riders and fans of all disciplines: dressage, driving, hunter/jumper, Western, English, polocrosse, Pony Club, trail, drill team, rodeo, therapeutic riding, horse rescues, retraining and retirement facilities



Maryland Equine Facts

1. The Maryland Horse Industry has an economic impact of \$1.6 billion, making it one of the largest industries in the state,<sup>17</sup> and employs over 20,000 people.<sup>18</sup>
2. The value of all equine related assets in Maryland (e.g. land, fencing, equipment, equines, etc.) is over \$5.2 billion.<sup>19</sup>
3. Maryland has over 87,000 equines valued at over \$680 million.<sup>20</sup>
4. Over 38,500 households in Maryland are involved with horses.<sup>21</sup>
5. The number one use of horses in Maryland is trail riding.
6. Maryland has 2.7 Thoroughbreds per square mile, more Thoroughbreds per square mile than any other state.<sup>22</sup>

---

<sup>12</sup> 2002 Maryland Equine Census

<sup>13</sup> The Equiery, Jul 2010

<sup>14</sup> The Equestrian History of Prince George’s County, Historic Preservation Section, Prince George’s County M-NCPPC

<sup>15</sup> Marlborough Hunt Club website

<sup>16</sup> PGEC

<sup>17</sup> UMD College of Agriculture and Natural Resources

<sup>18</sup> Governor’s Special Commission on Professional Sports and the Economy

<sup>19</sup> 2002 Maryland Equine Census

<sup>20</sup> MD Department of Natural Resources

<sup>21</sup> US Equine Marketing Association, 1989

<sup>22</sup> “Saddle Up Maryland!” Directory to Rental Stables & Guided Trail Rides in Maryland presented by Equiery

## **REFERENCE B**

List of Potential Prince George's County and Maryland Equine-Related websites to be Included in Prince George's County Central Web Location

### **National**

- American Horse Council  
[www.horsecouncil.org](http://www.horsecouncil.org)
- National Park Service – Parks in Maryland
- National Park Service – Greenbelt Park, equestrian trails included  
[www.nps.gov/gree/planyourvisit/greenbelt-park-trail-system.htm](http://www.nps.gov/gree/planyourvisit/greenbelt-park-trail-system.htm)

### **State of Maryland**

- Maryland Horse Industry Board – History, Tourism, and Homepage  
[www.marylandhorseindustry.org/history.shtml](http://www.marylandhorseindustry.org/history.shtml)  
[www.marylandhorseindustry.org/tourism.shtml](http://www.marylandhorseindustry.org/tourism.shtml)  
[www.marylandhorseindustry.org/index.shtml](http://www.marylandhorseindustry.org/index.shtml)
- State of Maryland Department of Natural Resources – Park Listings, Horseback Riding, Southern Region  
[www.dnr.state.md.us/publiclands/result.asp?multiple=17&lstregion=Southern](http://www.dnr.state.md.us/publiclands/result.asp?multiple=17&lstregion=Southern)
- State of Maryland Department of Natural Resources, Prince George's County Greenways Listing  
[www.dnr.maryland.gov/greenways/counties/princegeorges.html](http://www.dnr.maryland.gov/greenways/counties/princegeorges.html)
- Maryland State Archives Site – Prince Georges County (Rosaryville only)  
[www.msa.md.gov/msa/mdmanual/01glance/html/parks.html#pg](http://www.msa.md.gov/msa/mdmanual/01glance/html/parks.html#pg)
- State Parks – Maryland – commercial site  
[www.stateparks.com/md.html](http://www.stateparks.com/md.html)

### **Prince George's County**

- Maryland National Capital Park and Planning Commission Trails  
[www.mncppc.org/parks\\_facilities/mncppc\\_trails.html](http://www.mncppc.org/parks_facilities/mncppc_trails.html)
- Prince George's County Conference and Visitors Bureau – listing of parks is available through link, and section on Historic Prince George's County – link for Belair Stable  
[www.visitprincegeorges.com](http://www.visitprincegeorges.com)
- Henson Creek Trail, mostly owned by M-NCPPC, not listed above, is stated to be an equestrian trail also. M-NCPPC provided a printed map and brochure; additional info at following link:  
[www.dnr.state.md.us/greenways/henson\\_trail.html](http://www.dnr.state.md.us/greenways/henson_trail.html)
- Maryland National Capital Park and Planning Commission Parks  
[www.mncppc.org/parks\\_facilities/mncppc\\_parks.html](http://www.mncppc.org/parks_facilities/mncppc_parks.html)
- Maryland-National Capital Park and Planning Commission – Fairland Recreational Park (only bi-county par/trail); equestrian trail included

- [www.montgomeryparks.org/park\\_of\\_the\\_day/apr/parkday\\_apr17.shtm](http://www.montgomeryparks.org/park_of_the_day/apr/parkday_apr17.shtm)
- Maryland National Capital Park and Planning Commission – Watkins Regional Park; equestrian trail included  
[www.pgparcs.com/page342](http://www.pgparcs.com/page342)
- Prince George’s County Equestrian Center  
[www.showplacearena.com/](http://www.showplacearena.com/)
- Prince George’s County Therapeutic Riding Stables
- Progressive Equestrian Therapeutic Services, Inc.  
[www.pets- inc.org](http://www.pets-inc.org)
- Belair Stable Museum  
[www.cityofbowie.org/LeisureActivities/Museum/belair\\_stable.asp](http://www.cityofbowie.org/LeisureActivities/Museum/belair_stable.asp)

### **Non-government Maryland Horse Related Websites**

- Maryland Horse Council – Variety of horse-related information and links  
[www.mdhorsecouncil.org/](http://www.mdhorsecouncil.org/)
- Trail Riders of Today – Maryland Trail riding organization (some Virginia and Pennsylvania also)  
[www.trot-md.org/](http://www.trot-md.org/)
- Personal website including equine trail information  
[www.shadowsrider.com/where.htm](http://www.shadowsrider.com/where.htm)
- Commercial website – Horse and Travel – Maryland Trail Listing  
[www.horseandtravel.com/states/maryland\\_horse\\_trails.html](http://www.horseandtravel.com/states/maryland_horse_trails.html)
- Southern Maryland Trail Riders – Local trail riding organization hosting rides on private lands  
<http://smtr.us/>
- Marlborough Hunt Club (Prince George’s County-based) website  
[marlboroughhuntclub.com/](http://marlboroughhuntclub.com/)
- The Equiery, Maryland’s Horse Magazine’s website  
[www.equiery.com/](http://www.equiery.com/)
- The Equiery’s list of Maryland Public Lands with Equestrian Trails  
[www.equiery.com/archives/MDPublicTrailLands.html](http://www.equiery.com/archives/MDPublicTrailLands.html)
- Rosecroft Raceway (website states it is closed)  
[www.rosecroft.com/](http://www.rosecroft.com/)
- The Maryland Jockey Club website  
[www.marylandracing.com/](http://www.marylandracing.com/)
- Background Information on Bowie Race Track  
[http://en.wikipedia.org/wiki/Bowie\\_Race\\_Track](http://en.wikipedia.org/wiki/Bowie_Race_Track)
- Maryland Horse Breeders Association website  
[www.marylandthoroughbred.com/](http://www.marylandthoroughbred.com/)
- Southern Maryland Horse Association website  
[www.smhahorseshow.com/](http://www.smhahorseshow.com/)
- Maryland Horse Show Association website  
[www.mdhsa.org/](http://www.mdhsa.org/)
- Maryland Region Pony Club website  
<http://marylandregion.ponyclub.org/>
- National Capital Equitation League website

- <http://ncel.us/>
- National Capital Equitation League Affiliates website  
[www.ncelaffiliates.com/](http://www.ncelaffiliates.com/)
- The Interschool Horse Show Series website  
[www.interschoolhorseshow.org](http://www.interschoolhorseshow.org)
- The Maryland Combined Training Association website  
[www.mdcta.com/index.html](http://www.mdcta.com/index.html)
- Marlborough Horse Trials, Southern Maryland's first United States combined training association approved horse trials  
[www.marlboroughhorse.org/](http://www.marlboroughhorse.org/)

## **REFERENCE C**

### **County Trail Resource Guide**

#### **National**

- National Park Service – Parks in Maryland (Cannot sort by State and Horseback Riding)  
[www.nps.gov/findapark/](http://www.nps.gov/findapark/)
- National Park Service – Greenbelt Park, equestrian trails included  
[www.nps.gov/gree/planyourvisit/greenbelt-park-trail-system.htm](http://www.nps.gov/gree/planyourvisit/greenbelt-park-trail-system.htm)

#### **State of Maryland**

- State of Maryland Department of Natural Resources – Park Listings, Horseback Riding, Southern Region  
[www.dnr.state.md.us/publiclands/result.asp?multiple=17&lstregion=Southern](http://www.dnr.state.md.us/publiclands/result.asp?multiple=17&lstregion=Southern)
- State of Maryland Department of Natural Resources, Prince George's County Greenways Listing  
<http://dnr.maryland.gov/greenways/counties/princegeorges.html>
- Maryland State Archives Site – Prince Georges County (Rosaryville only)  
[www.msa.md.gov/msa/mdmanual/01glance/html/parks.html#pg](http://www.msa.md.gov/msa/mdmanual/01glance/html/parks.html#pg)
- State Parks – Maryland – commercial site  
[www.stateparks.com/md.html](http://www.stateparks.com/md.html)

#### **Prince George's County**

- Maryland National Capital Park and Planning Commission Trails  
[www.mncppc.org/parks\\_facilities/mncppc\\_trails.html](http://www.mncppc.org/parks_facilities/mncppc_trails.html)
- Henson Creek Trail, mostly owned by MNCPPC, not listed above, is stated to be an equestrian trail also. MNCPPC provided a printed map and brochure; additional info at following link:  
[www.dnr.state.md.us/greenways/henson\\_trail.html](http://www.dnr.state.md.us/greenways/henson_trail.html)
- Maryland National Capital Park and Planning Commission Parks  
[www.mncppc.org/parks\\_facilities/mncppc\\_parks.html](http://www.mncppc.org/parks_facilities/mncppc_parks.html)

- Maryland National Capital Park and Planning Commission – Fairland Recreational Park (only bi-county par/trail); equestrian trail included  
[www.montgomeryparks.org/park\\_of\\_the\\_day/apr/parkday\\_apr17.shtm](http://www.montgomeryparks.org/park_of_the_day/apr/parkday_apr17.shtm)
- Maryland National Capital Park and Planning Commission – Watkins Regional Park; equestrian trail included  
[www.pgparcs.com/page342](http://www.pgparcs.com/page342)
- Prince George’s County Equestrian Center  
[www.showplacearena.com/](http://www.showplacearena.com/)

### **Non-government Maryland Horse Trail Related Websites**

- Maryland Horse Council – Variety of horse-related information and links, to include trail information  
[www.mdhorsecouncil.org/](http://www.mdhorsecouncil.org/)
- Trail Riders of Today – Maryland Trail riding organization (some Virginia and Pennsylvania also)  
[www.trot-md.org/](http://www.trot-md.org/)
- Personal website including equine trail information  
<http://shadowsrider.com/where.htm>
- Commercial website – Horse and Travel – Maryland Trail Listing  
[www.horseandtravel.com/states/maryland\\_horse\\_trails.html](http://www.horseandtravel.com/states/maryland_horse_trails.html)
- Southern Maryland Trail Riders – Local trail riding organization hosting rides on private lands  
<http://smtr.us/>
- The Equiery’s list of Maryland Public Lands with Equestrian Trails  
[www.equiery.com/archives/MDPublicTrailLands.html](http://www.equiery.com/archives/MDPublicTrailLands.html)
- Southern Maryland Agricultural Development Commission (SMADC)  
–“So. Maryland So Good...” Equine guide with trails in southern Maryland listed along with therapeutic riding, instructor/lesson listings and other equine resources.  
[www.somarylandsogood.com/pdf/FinalEquineGuide08.pdf](http://www.somarylandsogood.com/pdf/FinalEquineGuide08.pdf)



# **Zoning & Land Use Subcommittee**

## **ZONING AND LAND USE SUBCOMMITTEE REPORT**

The Zoning and Land Use subcommittee was asked to review zoning regulations in effect concerning the equine industry in Prince George’s County. The subcommittee also evaluated the land use of several equine-related venues or operations in the county and a broad public policy initiative beyond but germane to the purview of the task force.

### **ZONING**

Existing equine-related zoning ordinances and the county code were dated and required adjustment. One of the most significant changes in recent years came in 2009 when the Maryland State Assembly passed legislation (HB 955) to include equine uses as part of agriculture (**Attachment 1**). The Zoning and Land Use Working Group of the 2009 Maryland Horse Forum (the “2009 Report”) stated: “Equestrian facility owners should insist that their local and county officials recognize them as part of agriculture, treat them as such, and afford them the same benefits and programs available to other types of agriculture.”<sup>23</sup>

The subcommittee recommendations are briefly summarized below as follows:

1. Amendments to the zoning and related code provisions to include equine uses as part of agriculture consistent with the 2009 Report,
2. A commitment to encourage the preservation and sustainability of open space for equine activities, and
3. A broad public policy initiative to modify and strengthen the Right to Farm law and related provisions, as described below.

### **Equine Activities and Equine Facilities**

As a result of issues raised regarding the difficulty of maintaining horse farms during the Maryland Horse Forum in 2009, the Maryland Horse Council initiated “The Save the Horse Farms” campaign as part of its Maryland Horse Council Action Plan. The loss of horse farms is a statewide issue, not just a county one. The objectives of the campaign are to ensure horse farms are identified as agricultural and to help remaining farms navigate definitions used by local planning and zoning authorities to ensure they are compatible with horse farming, horse keeping, and horse businesses.

---

<sup>23</sup> Maryland Horse Forum 2009 Final Report, p. 14



## **RECOMMENDATIONS:**

1. Two (2) new definitions are recommended to amend and expand the Zoning Ordinance and table of uses to acknowledge “Equine Activities” and “Equine Facilities” as a part of agriculture and agritourism. Adoption of the proposed amendments would meet the primary objectives of the Zoning and Land Use Working Group of the 2009 Report and the grass roots campaign evolving throughout the State.
2. As proposed “Equine Activities” would include teaching equestrian skills, participating in equestrian events, competitions, exhibitions or other displays of equestrian skills, and caring for, breeding, boarding, dealing, selling, renting, riding or training equines. The term is intended to be broad or universal in scope to capture all conceivable activities or operations related to the equine industry without distinction between a commercial or noncommercial activity. No regulatory regime is proposed to limit or interfere with the size or scale of commercial activities at this time.

The second definition or “Equine Facilities” would include barns, stables, rings, paddocks or accessory buildings or structures used for equine activities. This term is meant to be all inclusive to accommodate any and all Equine Activities wherever situated on a permanent or temporary basis used as part of agricultural or agritourism.

Both terms as applied would expand the definition of “Agriculture” under Subtitle 27, the Zoning Ordinance and Subtitle 4 (Building). (Proposed Legislation ). Agritourism, as modified by CB-39-2009, would also encompass equine activities and equine facilities to encourage and permit commercial activities under existing guidelines.

The Table of Uses are modified to conform with the proposed amendments while retaining existing uses relating to equine activities or stables, boarding and other activities. (Proposed Legislation)

## **AGRITOURISM**

The subcommittee realizes the conundrum of increasing an economic base while maintaining open space. A broader definition of agritourism to include “Equine Activities” and “Equine Facilities” as proposed and noted above is a step in the right direction. Equine activities include horseback riding, working horse demonstrations, livestock encounters (to include mules, donkeys, miniature donkeys and miniature horses), horse drawn carts and more. According to *The Future of Agriculture in Prince George’s County*, due to the close proximity to the nation’s capital, agritourism has tremendous potential in Prince George’s County, and several farms in the county are and should remain very active in agritourism.<sup>24</sup>



---

<sup>24</sup> The Future of Agriculture in Prince George’s County, 2005, pgs. 32-33.

**RECOMMENDATIONS:**

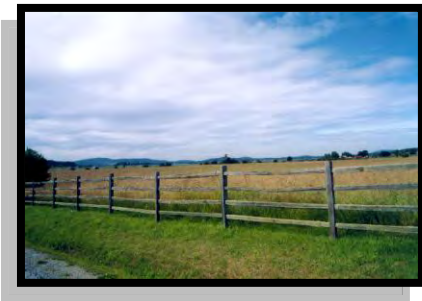
1. The subcommittee recommends the county support efforts to preserve and sustain equine farms and promote agritourism as a means to accomplish both. In addition, the Prince George’s County Conference and Visitors Bureau should work with The Maryland-National Capital Park and Planning Commission and other appropriate agencies to promote agritourism.<sup>25</sup>

The subcommittee acknowledges passage of CB-39-2009 which addressed and expanded the use of agritourism and bed and breakfast inns in certain zones. The addition of bed and breakfast inns to accommodate overnight stabling would attract visitors to the county’s parks and trails and provide travelers with horses in tow an opportunity to spend time in the county, particularly in the Rural Tier. At this time, camping space is very limited, and is seasonal, and the bed and breakfast inns with stables could fill that void. On a larger scale, the subcommittee encourages the county to explore the adaptive reuse of an existing facility with sufficient land in the Rural Tier to serve as a country inn to accommodate larger parties for extended periods. The country inn would be compatible with the agricultural character and open space of the Rural Tier landscape and community while supporting agritourism and similar steps to sustain the equine industry.

2. The subcommittee recommends the county promote the passage of CB-39-2009 and encourage and lend assistance to property owners with appropriate facilities to establish a bed and breakfast and/or a country inn.

**LAND USE ANALYSIS**

—The vision for the Rural Tier is protection of large amounts of land for woodland, wildlife habitat, recreation, and agricultural pursuits, and preservation of the rural character and vistas that now exist. Land use, environmental, transportation, and public facilities policies recommended for the Rural Tier are intended to balance the ever-increasing pressure for residential development and landowner’s equity with the desire to maintain rural environs and character.<sup>26</sup>



The *Prince George’s County Strategic Program for Agricultural Development* outlined several recommendations that could help to preserve horse farms and sustain equine activities or operations. The program recommends supporting farm friendly land use policies and programs, to include strengthening right-to-farm protections, improving planning efforts, and improving land preservation programming. Specifically regarding the equine sector, the program recommends supporting state-level changes to tax policy including elimination of property taxes on agricultural infrastructure on eased properties, tax credits for best management practices, and higher estate tax exemptions.<sup>27</sup>

<sup>25</sup> The Future of Agriculture in Prince George’s County, 2005, p. 40.

<sup>26</sup> The Maryland-National Capital Park and Planning Commission, *Prince George’s County approved General Plan*, 2002.

<sup>27</sup> *Prince George’s County Strategic Program for Agricultural Development*, 2009, pgs. 21-24.

### **The Rural and Developing Tiers – Preserving Open Space**

The subcommittee identified and reviewed the land use analysis of three major equine activities or operations in the county (**Attachment 3**):

- The Prince George’s County Equestrian Center - Show Place Arena (PGEC)
- Rosecroft Raceway
- Bowie Training Center

### **RECOMMENDATIONS:**

1. The subcommittee encourages zoning or re-zoning where appropriate to enhance and expand the Center and permit development of a hotel in the immediate vicinity to accommodate and support the expansion effort. The Master Plan under review should address the feasibility and location of a proposed hotel along with the expansion of the Center and highest and best use of the surrounding land for equestrian activities.
2. Rosecroft Raceway, with the adjacent historic property Kildare and proximity to Henson Creek Trail, managed by M-NCPPC, provides unique opportunities not otherwise available in the county. This area should reflect a commitment by the county to preserve open space in the Developing Tier and we recommend the horse industry has a seat at the table regarding plans to rezone or redevelop the area. Any attempt to change the existing use should be compatible with a commitment to preserve open space in the Developing Tier and the continued operation of facilities for equine activities and equine facilities.
3. The subcommittee concurs with 2006 Approved Bowie and Vicinity Master Plan and Sectional Map Amendment concerning the Bowie Training Facility in which a portion of the property was rezoned from Rural Residential (R-R) to Open Space (O-S). The entire Bowie Training Facility should be zoned as O-S. The Master Plan cited the purpose of the rezoning was to preserve the (Green Infrastructure Network) Primary Corridor along the Patuxent River and the re-designation of the property from the Developing Tier to the Rural Tier to protect the Patuxent River Corridor.  
The subcommittee recognized that the adjoining stables, indoor track, and related equine facilities (the “Adjoining Area”) is not zoned O-S. The subcommittee recommends this issue be reviewed as the Adjoining Area is vital to the future equine use of the Bowie Training Facility.

**Attachment  
1**

Ch. 699

**CHAPTER 699**

**(House Bill 955)**

AN ACT concerning

**Maryland Horse Industry Board – Equine Activities**

FOR the purpose of providing that certain activities are not subject to certain provisions of law relating to the Maryland Horse Industry Board; requiring that equine activities be treated as agricultural activities for the purposes of certain provisions of law; defining a certain term; and generally relating to the Maryland Horse Industry Board and equine activities.

BY repealing and reenacting, with amendments,

Article – Agriculture

Section 2–701 and 2–702

Annotated Code of Maryland

(2007 Replacement Volume and 2008 Supplement)

BY adding to

Article – Agriculture

Section 2–702.1

Annotated Code of Maryland

(2007 Replacement Volume and 2008 Supplement)

SECTION 1. BE IT ENACTED BY THE GENERAL ASSEMBLY OF MARYLAND, That the Laws of Maryland read as follows:

**Article – Agriculture**

2–701.

(a) In this subtitle the following words have the meanings indicated.

(b) “Board” means the Maryland Horse Industry Board.

(c) “Boarding stable” means an establishment that stables five or more horses and receives compensation for these services.

(d) **“EQUINE ACTIVITIES” INCLUDES TEACHING EQUESTRIAN SKILLS, PARTICIPATING IN EQUESTRIAN COMPETITIONS, EXHIBITIONS OR OTHER DISPLAYS OF EQUESTRIAN SKILLS, AND CARING FOR, BREEDING, BOARDING, RENTING, RIDING, OR TRAINING HORSES.**

Ch. 699

MARTIN O'MALLEY, Governor

(E) "Equine dealer, breeding stables, or rescue stables" includes an establishment in which five or more horses are sold or transferred each year.

[(e)] (F) "Horse" includes horses and ponies.

[(f)] (G) (1) "Horse riding and rental stables" means an establishment in connection with which one or more horses are let for hire to be ridden or driven, either with or without the furnishing of riding or driving instruction.

(2) "Horse riding and rental stables" includes:

(i) Boarding stables;

(ii) Equine dealer, breeding stables, or rescue stables; and

(iii) Sales barns.

[(g)] (H) "Sales barns" includes an establishment where horses are sold.

2-702.

[Horse] **EXCEPT AS PROVIDED IN § 2-702.1 OF THIS SUBTITLE, HORSE racing and standardbred stables [and] OR farms using horses for [agricultural purposes] WORKING OR CULTIVATING THE SOIL OR HERDING OR CUTTING LIVESTOCK** are not subject to the provisions of this subtitle.

**2-702.1.**

**EQUINE ACTIVITIES SHALL BE TREATED AS AGRICULTURAL ACTIVITIES FOR THE PURPOSES OF THIS ~~ARTICLE~~ SUBTITLE.**

SECTION 2. AND BE IT FURTHER ENACTED, That this Act shall take effect October 1, 2009.

**Approved by the Governor, May 19, 2009.**

Attachment 2

DR-1

**COUNTY COUNCIL OF PRINCE GEORGE'S COUNTY, MARYLAND  
SITTING AS THE DISTRICT COUNCIL  
2010 Legislative Session**

Bill No. CB- -2010  
Chapter No. \_\_\_\_\_  
Proposed and Presented by \_\_\_\_\_  
Introduced by \_\_\_\_\_  
Co-Sponsors \_\_\_\_\_  
Date of Introduction \_\_\_\_\_

**ZONING BILL**

1 AN ORDINANCE concerning  
2 Agriculture, Agritourism, Equine Activities and Equine Facility  
3 For the purpose of amending the definitions of agriculture and agritourism; adding definitions for  
4 equine activities and equine facility; and permitting these uses in certain residential zones and  
5 generally relating to these uses.  
6 BY repealing and reenacting with amendments:  
7 Sections 27-107.01 and 27-441,  
8 The Zoning Ordinance of Prince George's County, Maryland,  
9 being also  
10 SUBTITLE 27. ZONING.  
11 The Prince George's County Code  
12 (2007 Edition, 2009 Supplement).  
13 SECTION 1. BE IT ENACTED by the County Council of Prince George's County,  
14 Maryland, sitting as the District Council for that part of the Maryland-Washington Regional  
15 District in Prince George's County, Maryland, that Sections 27-107.01 and 27-441 of the Zoning  
16 Ordinance of Prince George's County, Maryland, being also Subtitle 27 of the Prince George's  
17 County Code, be and the same are hereby repealed and reenacted with the following  
18 amendments:  
19 **SUBTITLE 27. ZONING.**  
20 **PART 2. GENERAL.**

**DIVISION 1. DEFINITIONS.**

**Sec. 27-107.01. Definitions.**

(a) Terms in the Zoning Ordinance are defined as follows:

\* \* \* \* \*

(9) **Agriculture:** The "Use" of land for farming, dairying, pasturage, apiaries, horticulture, floriculture, and animal husbandry, which may include "Accessory Uses" for processing, treating, selling, or storing agricultural products produced on a farm (on the premises). Agriculture includes equine activities and equine facilities. The term "Agriculture" shall not include the commercial feeding of garbage or offal to animals, the slaughtering of livestock for marketing, or the disposal of sludge except for fertilization of crops, horticultural products, or floricultural products in connection with [a] an active agricultural operation or home gardening.

(9.1) **Agritourism:** A commercial enterprise that is intended to attract tourists and provide supplemental income for the owner of a working farm that qualifies for agricultural use assessment pursuant to § 8-209 of the Tax-Property Article of the Annotated Code of Maryland (as amended). The commercial enterprise shall be offered to the public or invited groups and shall be related to agriculture or natural resources and incidental to the primary operation on the site. Agritourism uses include, but are not limited to: "Equine Activities", fishing, hunting, wildlife study, [horseback riding,] corn mazes, harvest festivals, barn dances, hayrides, roadside stands, farmer's markets, u-pick or pick-your-own operations, rent-a-tree operations, farm tours, wine tasting, educational classes related to agricultural products or skills. Agritourism may include picnics, equine facilities and party facilities, corporate retreats and weddings; however, no lodging or overnight stay shall be provided for these uses. Agritourism includes farm or ranch stays subject to the same rules as a Bed-and-Breakfast Inn as defined in this Subtitle. Accessory recreational activities may be provided for guests.

\* \* \* \* \*

(84.2) **Equine Activities:** includes teaching equestrian skills, participating in equestrian events, competitions, exhibitions or other displays of equestrian skills, and caring for, breeding, boarding, dealing, selling, renting, riding, or training equines. The term shall not include "Animal Boarding Place".

(84.3) **Equine Facility:** includes barns, stables, rings, paddocks or accessory buildings or

CB- -2010 (DR-1)

1  
2  
3  
4  
5

structures used for Equine Activities.

\* \* \* \* \*

**PART 5. RESIDENTIAL ZONES.**

**DIVISION 3. USES PERMITTED. (RESIDENTIAL ZONES).**

**Sec. 27-441. Uses permitted.**



CB- -2010 (DR-1)

Sec. 27-441. Uses permitted.

(b) TABLE OF USES.

USE	ZONE									
	R-O-S	O-S	R-A	R-E	R-R	R-80	R-55	R-35	R-20	
(1) COMMERCIAL:										
[Riding stable:										
(A) On a tract consisting of less than 20,000 sq. ft.	X	SE	SE	X	X	X	X	X	X	X
(B) On a tract consisting of between 20,000 sq. ft. and 9 contiguous acres.	SE	SE	SE	SE	SE	X	X	X	X	X
(C) All others	P	P	P	P	SE <sup>87</sup>	X	X	X	X	X
* * * * *	*	*	*	*	*	*	*	*	*	*
(7) Resource Production /Recovery:										
Agricultural uses:										
(A) All general agriculture <sup>22</sup>	P	P	P	P	P <sup>23</sup>	SE	SE	SE	SE	SE
(B) Keeping of horses or ponies	P	P	P	P	P <sup>23</sup>	P <sup>37</sup>	P <sup>37</sup>	SE	SE	SE
(C) Limited to floriculture, horticulture, gardening, and private noncommercial green houses	X	X	X	X	X	P	P	P	P	P
(D) Keeping of homing or racing pigeons, provided the use was in existence:										
I. Prior to June 30, 1987	P	P	P	P	P <sup>4</sup>	X	P <sup>50</sup>	X	X	X
II. On or after June 30, 1987	P	P	P	P	P <sup>4</sup>	X	X	X	X	X
(E) Equine activities	P	P	P	P <sup>81</sup>	X	X	X	X	X	X

CB- -2010 (DR-1)

USE	ZONE								
	R-O-S	O-S	R-A	R-E	R-R	R-80	R-55	R-35	R-20
[F] (E) Equine facility:									
a) <u>Keeping of horses or ponies</u>	P	P	P	P	P <sup>23</sup>	P <sup>37</sup>	P <sup>37</sup>	SE	SE
b) <u>Private stable</u>	P <sup>35</sup>	P <sup>35</sup>	P <sup>36</sup>	P <sup>35</sup>	P <sup>35</sup>	P <sup>35,37</sup>	P <sup>35,37</sup>	SE <sup>35</sup>	SE <sup>35</sup>
c) <u>Riding stable:</u>									
I. <u>On a tract consisting of less than 20,000 sq. ft.</u>	X	SE	SE	X	X	X	X	X	X
II. <u>On a tract consisting of between 20,000 sq. ft. and 9 contiguous acres.</u>	SE	SE	SE	SE	SE	X	X	X	X
III. All others	P	P	P	P	SE <sup>67</sup>	X	X	X	X
d) <u>All others</u>	P	P	P	P <sup>91</sup>	X	X	X	X	X
* * * * *	*	*	*	*	*	*	*	*	*

CB- -2010 (DR-1)

USE	ZONE							
	R-T	R-30	R-30C	R-18	R-18C	R-10A	R-10	R-H
(1) COMMERCIAL: [Riding stable: (A) On a tract consisting of 20,000 sq. ft. (B) On a tract consisting between 20,000 sq. ft and 9 contiguous acres. (C) All others	*	X	X	X	X	X	X	X
(7) Resource Production/Recovery: Agricultural uses: (A) All general agriculture <sup>22</sup> [(B) Keeping of horses or ponies [(C)] [(B)] Limited to floriculture, horticulture, gardening, and private, noncommercial greenhouses [(D)] [(C)] Keeping of homing or racing pigeons, provided the use was in existence: (i) Prior to June 30, 1987 (ii) On or after June 30, 1987 [(E)] [(D)] Equine Activities [(F)] [(E)] Equine Facility	*	X	X	X	X	X	X	X

CB- -2010 (DR-1)

USE	ZONE							
	R-T	R-30	R-30C	R-18	R-18C	R-10A	R-10	R-H
a) <u>Keeping of horses or ponies</u>	X	X	X	X	X	X	X	X
b) <u>Private stable</u>	X	X	X	X	X	X	X	X
c) <u>Riding stable</u>								
i. <u>On a tract consisting of less than 20,000 sq. ft.</u>	X	X	X	X	X	X	X	X
ii. <u>On a tract consisting of between 20,000 sq. ft. and 9 contiguous acres.</u>	X	X	X	X	X	X	X	X
iii. <u>All others</u>	X	X	X	X	X	X	X	X
* * * * *	*	*	*	*	*	*	*	*

22 Slaughterhouses, fertilizer works, bone yards, plants for the reduction of animal matter, and any uses which are noxious or offensive because of odor, dust, smoke, gas, or noise, are prohibited; may include [a stable] an equine facility in conjunction with the agricultural use.

23 On lots having a net area of twenty thousand (20,000) square feet or less, keeping cattle, [horses] equines, poultry or other animals or birds (other than customary household pets) shall only be permitted upon approval of a Special Exception.

\* \* \* \* \*

91. Provided the use is for the purpose of promoting agritourism as defined in Sec. 27-107 (a).

CB- -2010 (DR-1)

1 SECTION 2. BE IT FURTHER ENACTED that this Ordinance shall take effect forty-five  
2 (45) calendar days after its adoption.

Adopted this \_\_\_\_ day of \_\_\_\_\_, 2010.

COUNTY COUNCIL OF PRINCE GEORGE'S  
COUNTY, MARYLAND, SITTING AS THE  
DISTRICT COUNCIL FOR THAT PART OF  
THE MARYLAND-WASHINGTON REGIONAL  
DISTRICT IN PRINCE GEORGE'S COUNTY,  
MARYLAND

BY: \_\_\_\_\_  
Thomas E. Dernoga  
Chair

ATTEST:

\_\_\_\_\_  
Redis C. Floyd  
Clerk of the Council

KEY:  
Underscoring indicates language added to existing law.  
[Brackets] indicate language deleted from existing law.  
Asterisks \*\*\* indicate intervening existing Code provisions that remain unchanged.  
S:\COUNCIL\CLFPZED\EQUINEINDUSTRYTASKFORCE\BILL.DOC

DR-1

**COUNTY COUNCIL OF PRINCE GEORGE'S COUNTY, MARYLAND**  
**2010 Legislative Session**

Bill No. CB- -2010  
Chapter No. \_\_\_\_\_  
Proposed and Presented by \_\_\_\_\_  
Introduced by \_\_\_\_\_  
Co-Sponsors \_\_\_\_\_  
Date of Introduction \_\_\_\_\_

**BILL**

1 AN ACT concerning  
2 Agriculture  
3 For the purpose of amending the definition of agriculture and generally relating to agriculture.

4 BY repealing and reenacting with amendments:

5 SUBTITLE 4. BUILDING  
6 Section 4-357,  
7 The Prince George's County Code  
8 (2007 Edition, 2009 Supplement).

9 SECTION 1. BE IT ENACTED by the County Council of Prince George's County,  
10 Maryland, that Section 4-357 of the Prince George's County Code be and the same is hereby  
11 repealed and reenacted with the following amendments:

**SUBTITLE 4. BUILDING.**

**DIVISION 6. NONTIDAL WETLAND PROTECTION ORDINANCE.**

14 **Sec. 4-357. Definitions.**

15 (a) Applicability of definitions. The definitions contained in Subtitle 27 (Zoning) and  
16 Subtitle 4 (Building) Divisions 2 and 3 of this Code may apply to this Division and shall be  
17 supplemented by the definitions in Subsection (b) of this Section.

18 (b) Terms Defined. Wherever the following words are used in, or in conjunction with, the  
19 administration of this Division, they shall have the meaning ascribed to them in this Section.

20 \* \* \* \* \*

CB- -2010 (DR-1)

1           (4) **Agriculture** means a land use dominated by the production of food, fiber,  
 2 aquaculture or livestock, and other products cultivated as part of a recognized commercial  
 3 enterprise. Agriculture includes equine activities and equine facilities. Equine activities includes  
 4 teaching equestrian skills, participating in equestrian events, competitions, exhibitions or other  
 5 displays of equestrian skills, and caring for, breeding, boarding, dealing, selling, renting, riding  
 6 or training equines. Equine facilities include barns, stables, rings, paddocks or accessory  
 7 buildings or structures used for equine activities.

8           SECTION 2. BE IT FURTHER ENACTED that this Act shall take effect forty-five (45)  
 9 calendar days after it becomes law.

Adopted this \_\_\_\_ day of \_\_\_\_\_, 2010.

COUNTY COUNCIL OF PRINCE  
GEORGE'S COUNTY, MARYLAND

BY: \_\_\_\_\_  
Thomas E. Dernoga  
Chair

ATTEST:

\_\_\_\_\_  
Redis C. Floyd  
Clerk of the Council

APPROVED:

DATE: \_\_\_\_\_ BY: \_\_\_\_\_  
Jack B. Johnson  
County Executive

Attachment 3

Land Use Analysis  
Equestrian Center at The Show Place Arena

SITE NAME: Equestrian Center at The Show Place Arena

LOCATION: South East quadrant of US 301 and MD 4

ACRES: 147.75

TIER: Developing

PLANNING AREA: 82A

PARCEL/LOT: Parcel 32

TAX MAP AND GRID: 101-F3; 102-A2; 102-A3

COUNCILMANIC DISTRICT: 9

EXISTING ZONING: Subregion 6 SMA, approved September 15, 2009 retained the Residential-Agricultural (R-A) Zone

PROPOSED LAND USE: Public Parks and Open Space

MASTER PLAN: *Subregion 6 Master Plan*, approved September 15, 2009. The Equine Industry and the Prince George's Equestrian Center specifically are addressed starting on page 151 of the plan as follows:

"The Prince George's Equestrian Center is a major industry asset in the Mid-Atlantic states and has long been a center of activity for the performance horse industry in Subregion 6. Changes in the facility and its use over the last decade, however, have led to fewer equestrian activities occurring on-site, with some events moving to sites outside of Maryland. The facility is developing a new master plan to address the change in facility use and configuration which may further influence equestrian development in the subregion.

Much of the equine-related-activity occurs in the Rural Tier and contributes to the success of general agricultural operations through the sale of hay and forage. Horse boarding revenue is an important nonfarming source of revenue for some farmers and the sale of feed and tack keep agricultural operations such as Southern States and Gayer's Saddlery active in the subregion. These impacts strongly influence the economic health of the traditional agricultural sectors.

The following policies and strategies are designed to support the preservation and development of the equine industry.

POLICY 6

Improve the understanding of equine activities in the county and improve access to existing infrastructure for equestrian users.

STRATEGIES

1. Improve the equestrian facilities at the Prince George's County Equestrian Center to compete with similar equestrian facilities in the Mid-Atlantic with a focus on reestablishing the Prince George's Equestrian Center as a premier show and event facility.



2. Work with the Department of Parks and Recreation and industry partners to develop additional equestrian trails to enhance the reputation of the county as an equestrian activity center (see the Transportation Systems and Public Facilities chapters.)
  - Improve access to existing park infrastructure by expanding horse trails and outdoor arena capacity in Patuxent River Park
3. Develop a marketing and education program to promote the industry and improve the community's understanding of its role in the local economy and opportunities for recreational uses and enjoyment.

#### POLICY 7

Facilitate the economic development of the equine industry by making the county a center of activity at all levels of the industry.

#### STRATEGIES

1. Conduct an equine survey to assess the conditions, financial impact, and needs of the industry and support marketing efforts.
  - Inventory the full range of industry activities from recreational trail riding and performance events, to training and breeding facilities, to equine subsectors, including service and support infrastructure.
2. Facilitate land access for equestrian activities and the development of equestrian infrastructure through the creation of financial and business development incentives. Such programs could include breeder incentives and capital financing for arenas and event facilities, as well as financing trail development and access easements.
  - Support state-level policy enhancements in the equine industry centered on the development of a Maryland Breeders Incentive Program that improves the financial returns for thoroughbred and standard-bred racing in Maryland. Such incentives will allow Maryland breeders and trainers to remain competitive in the marketplace and stem the loss of the industry to neighboring states.
3. Develop and implement a marketing campaign in collaboration with the recommended agricultural marketing program to recruit additional equine operations and retain existing operations
  - Develop a database and interactive map of publicly accessible equine facilities such as riding arenas, boarding stables, leg-up facilities, and lay-ups."

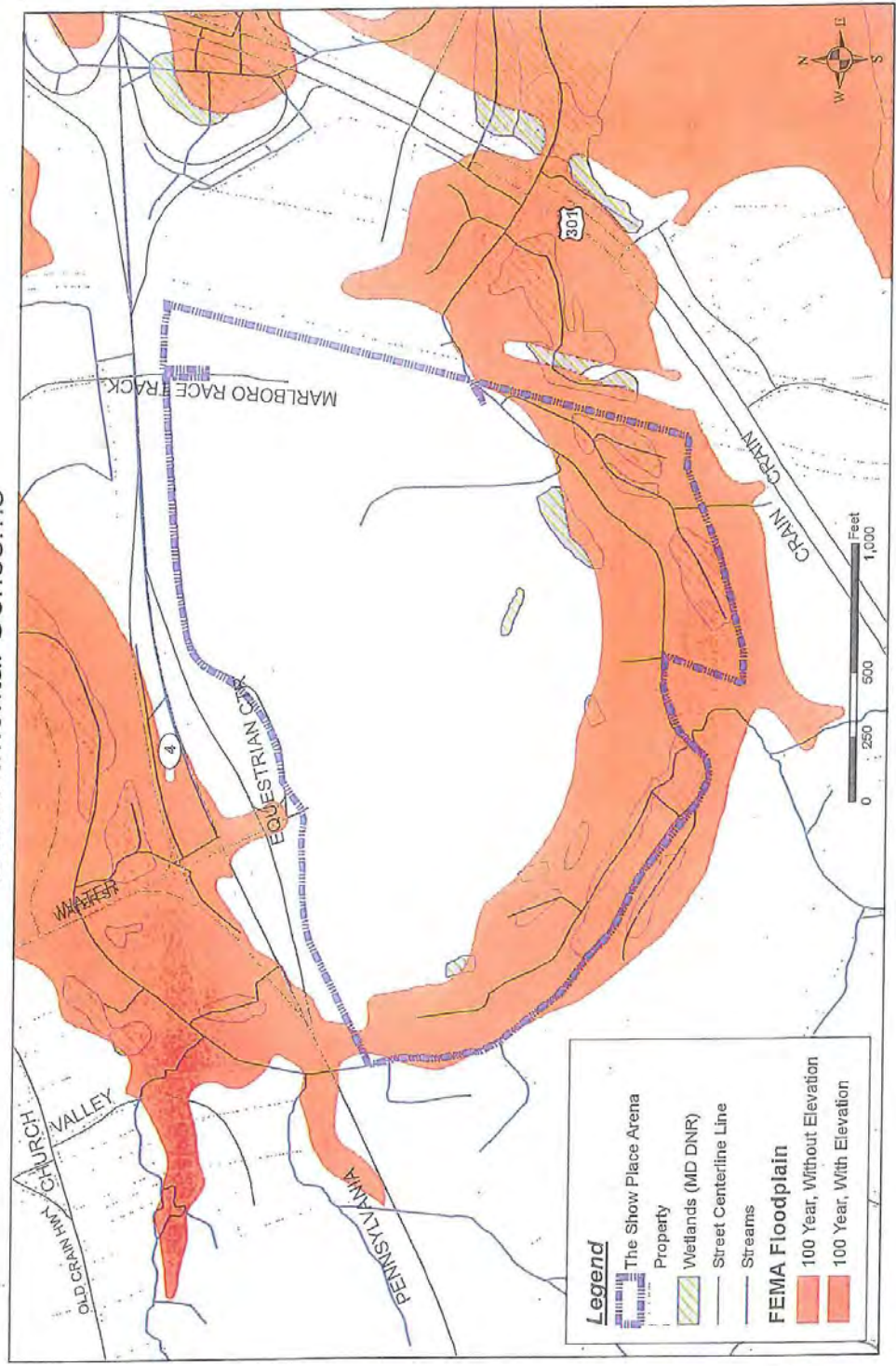
*Graphics/Maps: Mark B is supplying (1) aerial of property, (2) zoning, (3) streams/wetlands/FEMA floodplains (wetlands from MDDNR, National wetlands inventory, hydro centerline 2005, 100 year without elevation, 100 year with elevation), (4) steep and severe slopes (slopes between 15% and 25% and Slopes greater than 25%)*

The Show Place Arena/Prince George's Equestrian Center  
Aerial View

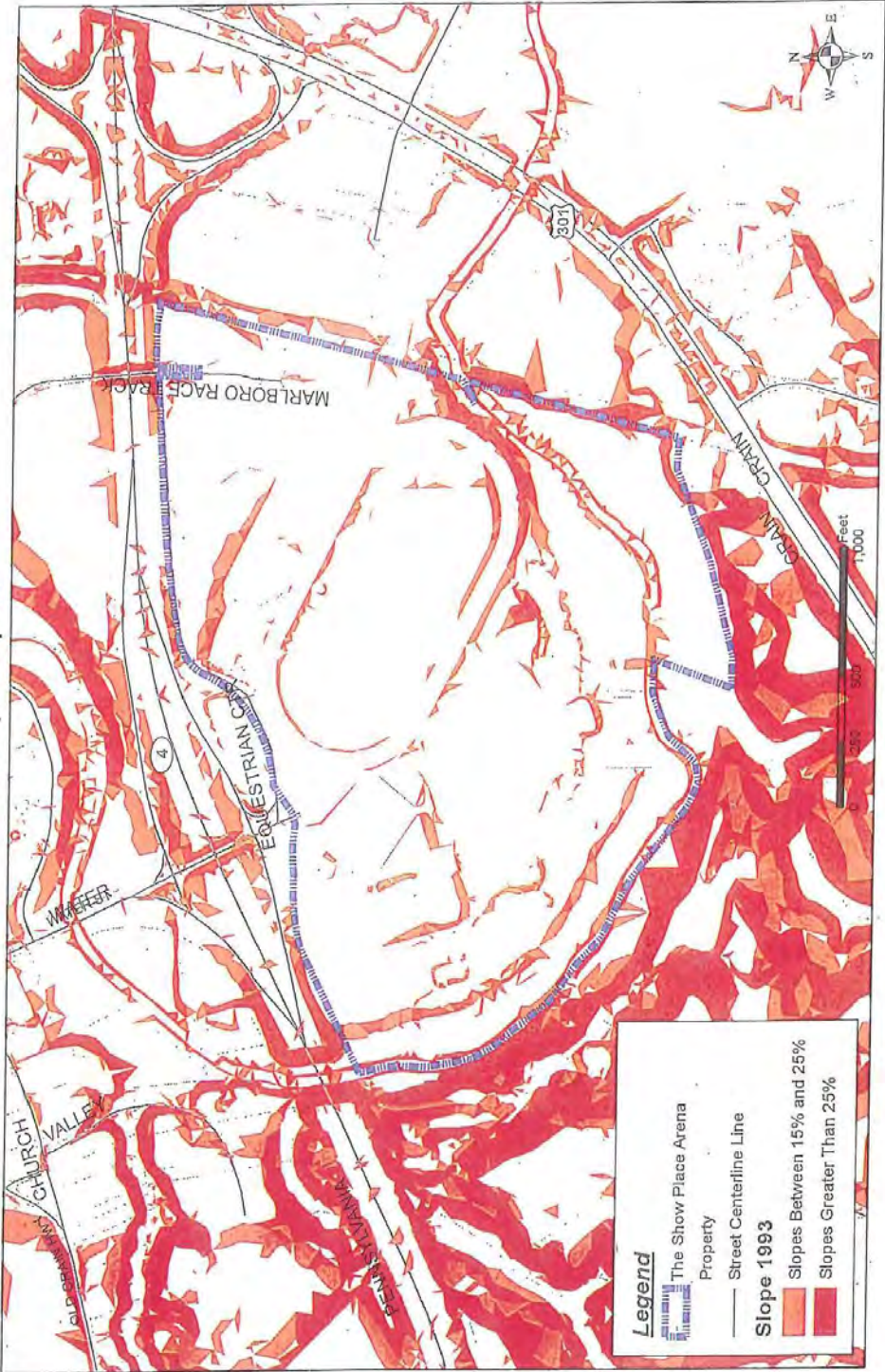




# The Show Place Arena/Prince George's Equestrian Center Environmental Concerns



The Show Place Arena/Prince George's Equestrian Center  
Steep Slopes



Land Use Analysis  
Rosecroft Raceway

SITE NAME: Rosecroft Raceway

LOCATION: At the terminus of Roscroft Drive and Rosecroft Boulevard north of Henson Creek Stream Valley

ACRES: 123.84

TIER: Developing Tier

PLANNING AREA: 76B (Henson Creek)

PARCEL/LOT: Parcel 217 and 45

TAX MAP AND GRID: 105 E1 Parcel 217 and 105F1 Parcel 45

COUNCILMANIC DISTRICT: 8

EXISTING ZONING: 2006 Henson Creek-South Potomac SMA retains R-R (Rural Residential) Zone.

**Note:** For area designated in the plan for mix of land uses where development is not imminent, the SMA recommends property owner application for appropriate mixed-use zone or a comprehensive design zone that implements the plan recommendations. It also recommends that an appropriate set of mixed-use zone be prepared or existing zone modified to efficiently and effectively implement the mixed-use, pedestrian- and transit-oriented development patterns recommended in the plan.

PROPOSED LAND USE: **Mixed-Use Area** – Primarily mix of residential types and sizes with neighborhood serving commercial and recreational uses.

MASTER PLAN: *2006 Henson Creek-South Potomac Master Plan* considers two scenarios for the future development of this mixed-use area depending on whether Rosecroft Raceway continues as a commercial entertainment venue or if it ceases to exist.

- If Rosecroft Raceway ceases to exist, the master plan recommends the preparation of a detailed small area plan or development application for Rosecroft Raceway property and adjoining 200-acre land for a compact mixed-used development that accommodates a mixture of housing types and sizes, recreation components, neighborhood-serving commercial amenities, and infrastructure.
- If Rosecroft Raceway continues as a commercial entertainment venue, the plan recommends a detailed small area plan or development application for the adjoining 200-acre land for a compact mixed-used development that accommodates a mixture of housing types and sizes, recreation components, neighborhood-serving commercial amenities, and infrastructure, and integrates Rosecroft Raceway as an on-going commercial entertainment venue.

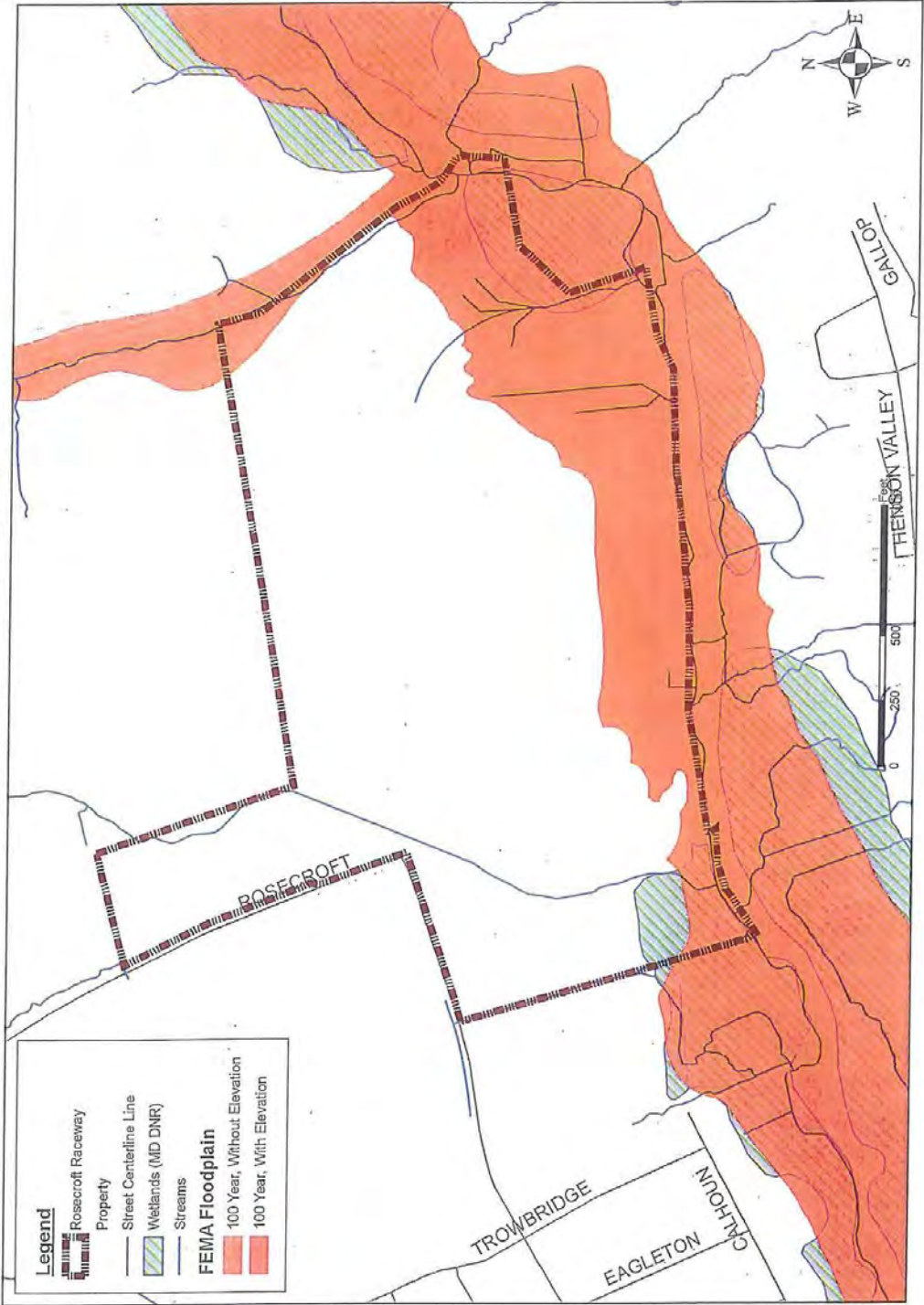
Rosecroft Raceway  
Aerial View



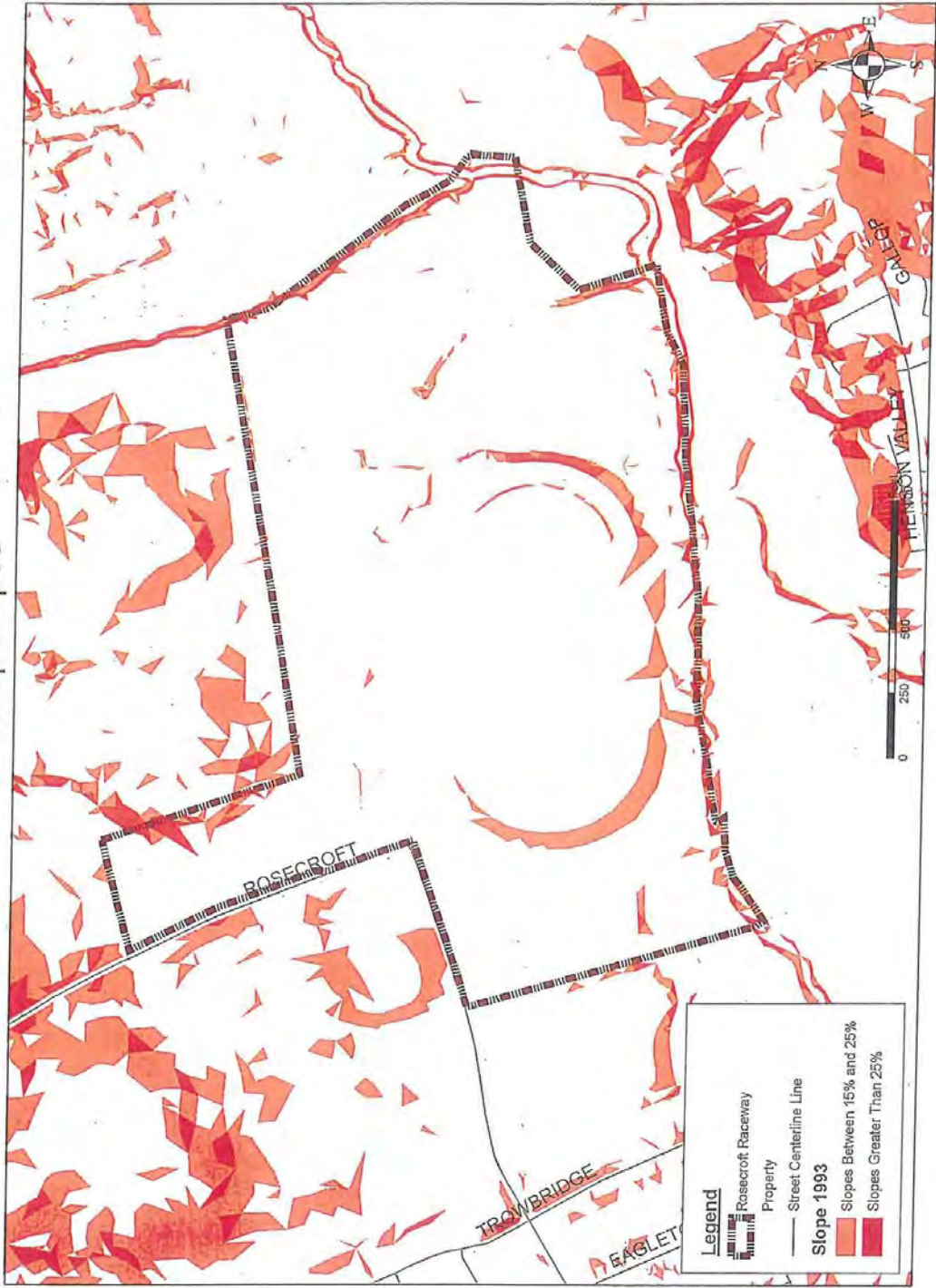




# Rosecroft Raceway Environmental Concerns



Rosecroft Raceway  
Steep Slopes



**Land Use Analysis**  
**Bowie Race Track (Training Facility)**

SITE NAME: Bowie Race Track (training facility)

LOCATION: 8311 Race Track Road, Bowie, MD 20715

ACRES: Approximately 135 acres (planimetered using GIS), pgatlas.com identified 156 acres for this site

TIER: Rural

PLANNING AREA: 71B

PARCEL/LOT: Parcel 11

TAX MAP AND GRID: 30, 211NE13R

COUNCILMANIC DISTRICT: 5

EXISTING ZONING: O-S Zone/ 2006 Approved Bowie and Vicinity SMA

PROPOSED LAND USE: Residential, Rural: Areas intended for sparse development alongside farming, raising livestock, recreation, and preservation of scenic and environmental attributes (as defined in the legend of the Bowie and Vicinity Master Plan, Future Land Use Map.)

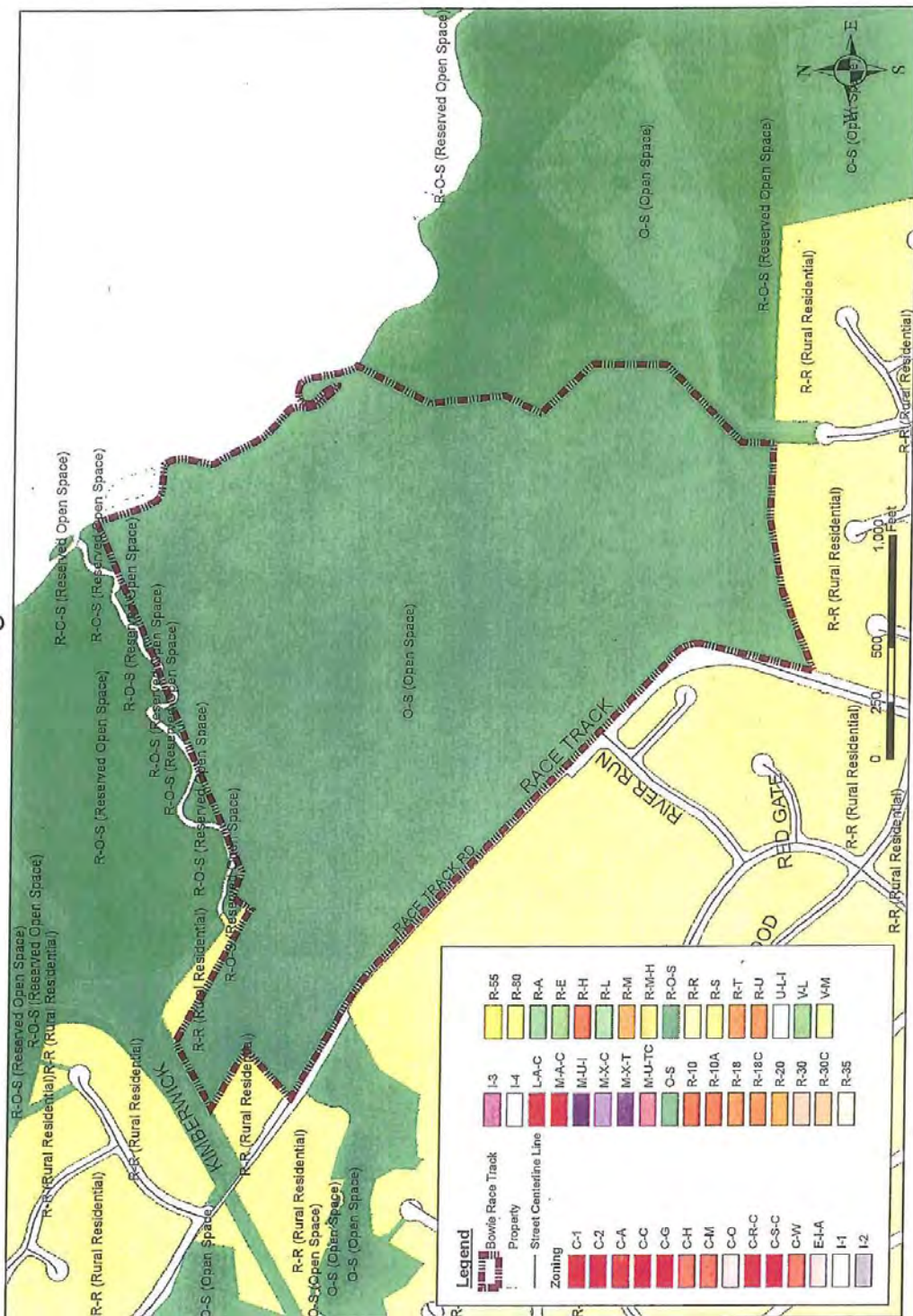
MASTER PLAN: *2006 Approved Bowie and Vicinity Master Plan and Sectional Map Amendment*

- In the 2006 SMA, a portion of this property was rezoned from R-R to O-S to place the entire property in the O-S Zone. The purpose for the rezoning was to preserve the (Green Infrastructure Network) Primary Corridor along the Patuxent River by minimizing the future intensity of development and assisting in the restoration and enhancement of environmental features and habitat along this corridor.
- This property was designated in the Rural Tier (removed from the Developing Tier) to protect the Patuxent River Corridor, because it was the narrowest part of the corridor.

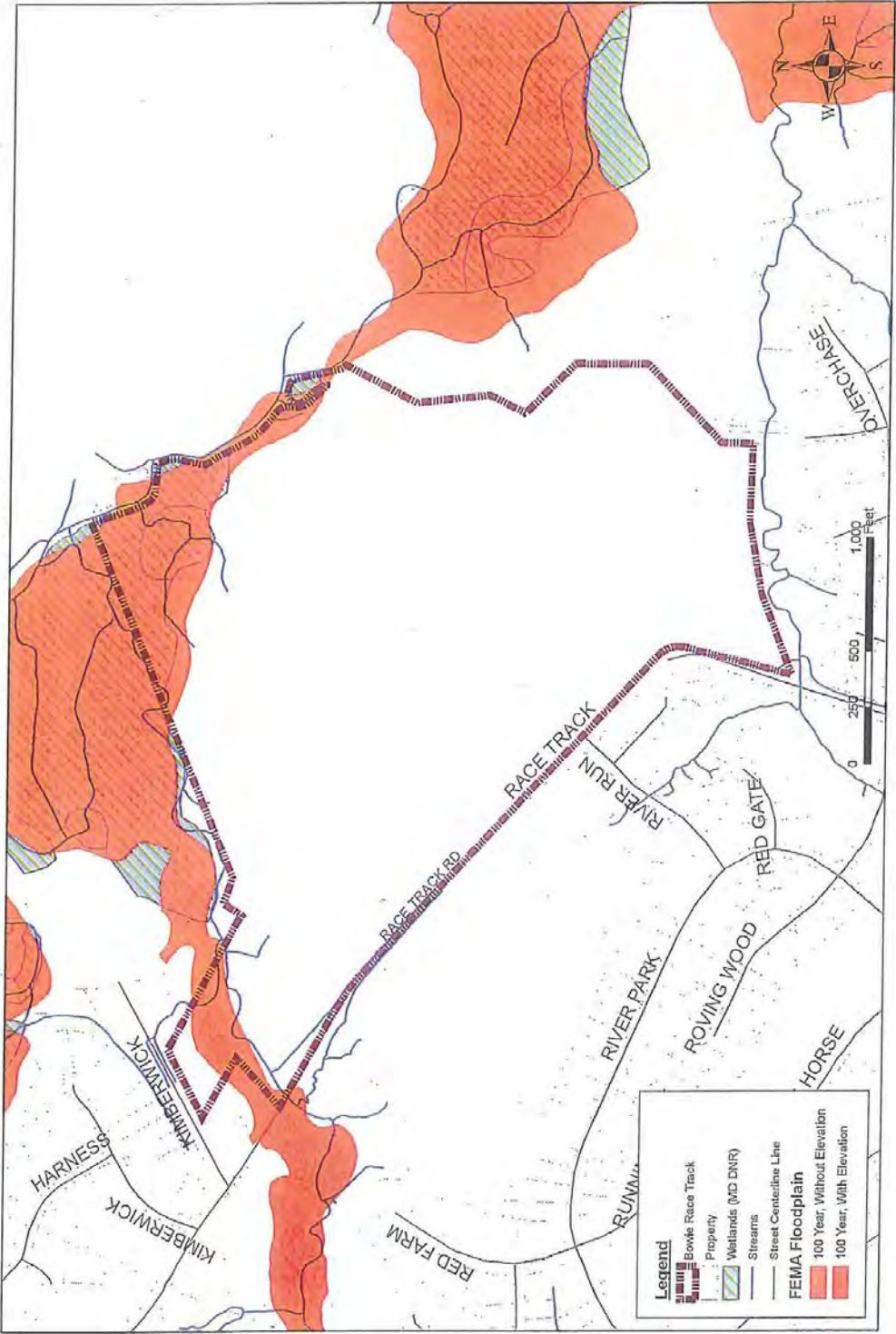
Bowie Race Track  
Aerial View



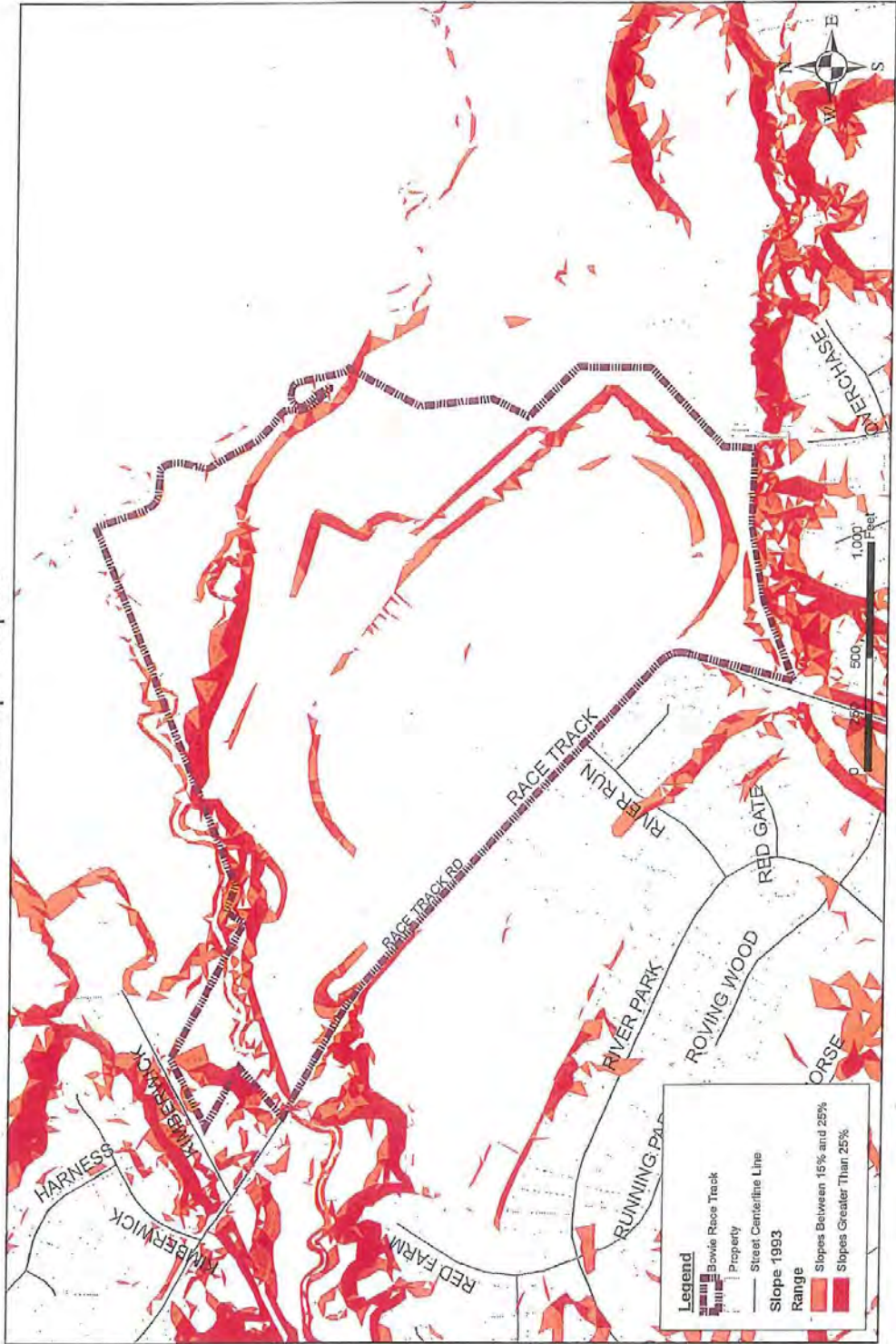
# Bowie Race Track Zoning



Bowie Race Track  
Environmental Concerns



### Bowie Race Track Steep Slopes





# **Environmental Study Subcommittee**



## **ENVIRONMENTAL STUDY SUBCOMMITTEE REPORT**

The Environmental Subcommittee met several times to evaluate manure management, emphasized in the 2009 Maryland Horse Forum Report as a critical concern for the equine industry, and best management practices to improve agricultural operations. The issues both operational and regulatory were intractable and too complex to address given the resources and within the time frame available to the subcommittee. The subcommittee deemed it prudent and advisable to recommend no specific course of action under the circumstances other than a broad public policy initiative to encourage the council to continue this important work. Some of the issues and concerns are briefly noted below.



Within the several weeks allotted, the subcommittee was unable to adequately evaluate the process of “greening the horse industry” or which management practices should be encouraged or preferred. Any recommendation would have required an in-depth study of bio-filtration systems, bio-fuel technology and a re-evaluation of current programs or practices for removal or composting of manure. Recommendations concerning a manure management receiving facility, linked to cutting edge technologies and economies, were also elusive.

Proposed amendments to a number of health and related regulations, while appropriate for the Rural Tier were found to be inapposite for the care and handling of equines in the Developing Tier. The same dichotomy was found when studying the impact of proposed regulations on small versus large operations wherever located.

Based on the level of difficulty and the fact that many of these same critical issues and concerns are under review by Federal, State and local governments, the Environmental Subcommittee recommends a broad public policy initiative to establish an “Environmental Impact Study Group,” as described by the Equine Industry Task Force in its final report to the Prince George’s County Council.

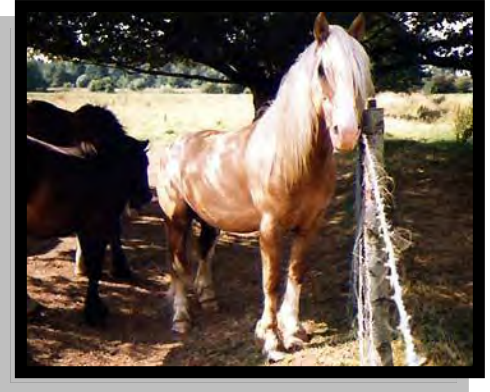


# **Unwanted Horses And The Ethical Treatment of Equines**

## UNWANTED HORSES AND ETHICAL TREATMENT OF EQUINES

### Unwanted Horses

The issue of “unwanted horses” was highlighted in the 2009 Maryland Horse Forum Report as a critical concern. In October 2009, American Horse Publications surveyed American horse owners and caretakers to gauge trends in the equine industry. With over 11,000 usable responses gathered, this was the largest survey of U.S. horse industry participants ever conducted.<sup>28</sup> More than 60 percent of the respondents selected “Unwanted Horses and what to do with them” as one of the top three most important issues facing the equine industry, depicted in Reference A. The reasons for the growing “unwanted horse” population are varied, and are beyond the scope of this report, but the nationwide issue is also a county one, and one the subcommittee believes can be best addressed by rewarding good horse stewardship (as mentioned below), promoting successful horse adoption programs, working with local horse rescues, and continuing education of the public on horse ownership and options when horses, or equine, are no longer desired by those owners.



The Maryland Horse Council formed a coalition to address concerns about Maryland's unwanted horses in 2010. “The Unwanted Horse Project” pronounced the nine most important issues regarding the subject noted below as follows:

- Education
- Data and Information
- Over-Breeding
- The Economy
- Programs - funding, oversight & support
- Horse Re-Training
- Horse Re-Homing
- Euthanasia<sup>29</sup>

### RECOMMENDATIONS:

1. Continued support in seeking solutions to the unwanted horse problem; and
2. A collaborative effort with the Maryland Horse Council coalition to gather accurate data on these activities and include and promote their contributions to the equine industry as appropriate.

---

<sup>28</sup> American Horse Publications, “American Horse Publications Survey Sheds Light on Equine Industry Trends,” April 30, 2010.

<sup>29</sup> Maryland Horse Council website, “Unwanted Horse Project”

### **Ethical Considerations in the Horse Industry**

A discussion of the equine industry in Prince George’s County would not be complete without addressing the ethical treatment of equines within the industry. Reference B (attached), is the American Horse Council’s Welfare Code of Practice (the “Code”), which the subcommittee believes provides excellent guidelines for horse welfare in the county. The Code outlines in generic terms what it means for an organization to be committed to the responsible breeding, training, care, use, enjoyment, transport, and retirement of horses. The Code is not intended to replace or pre-empt any activities, rules, or regulations specific to any segment of the industry. Rather it is a statement to the public, the media, federal and state officials, and the horse community that the equine industry “Puts the Horse First.”<sup>30</sup> The central website and other avenues used to promote the industry in Prince George’s County as recommended by the Marketing subcommittee of the Equine Industry Task Force should include a link to this document to highlight the importance of these values in the county.



Currently, the State of Maryland inspects and licenses horse stables to ensure the safety of Maryland horses and to protect the public. Pursuant to state law, Maryland equine facilities that operate as boarding, sales, breeding, rental, rescue, or training stables are required to have an annual license from the Maryland Horse Industry Board.<sup>31</sup> The subcommittee recommends the central website and other avenues relied on by the county to promote its equine industry establish a link to the Maryland Horse Industry Board website, highlighting the licensing and health advisory committee sections, to encourage the proper treatment and care of equines by the public. Similar relationships or ventures should be pursued with the University of Maryland Extension Prince George’s and the Prince George’s County Soil Conservation District, both of whom provide valuable educational services and best management practices to encourage responsible equine ownership and operations in the county.

#### **RECOMMENDATIONS:**

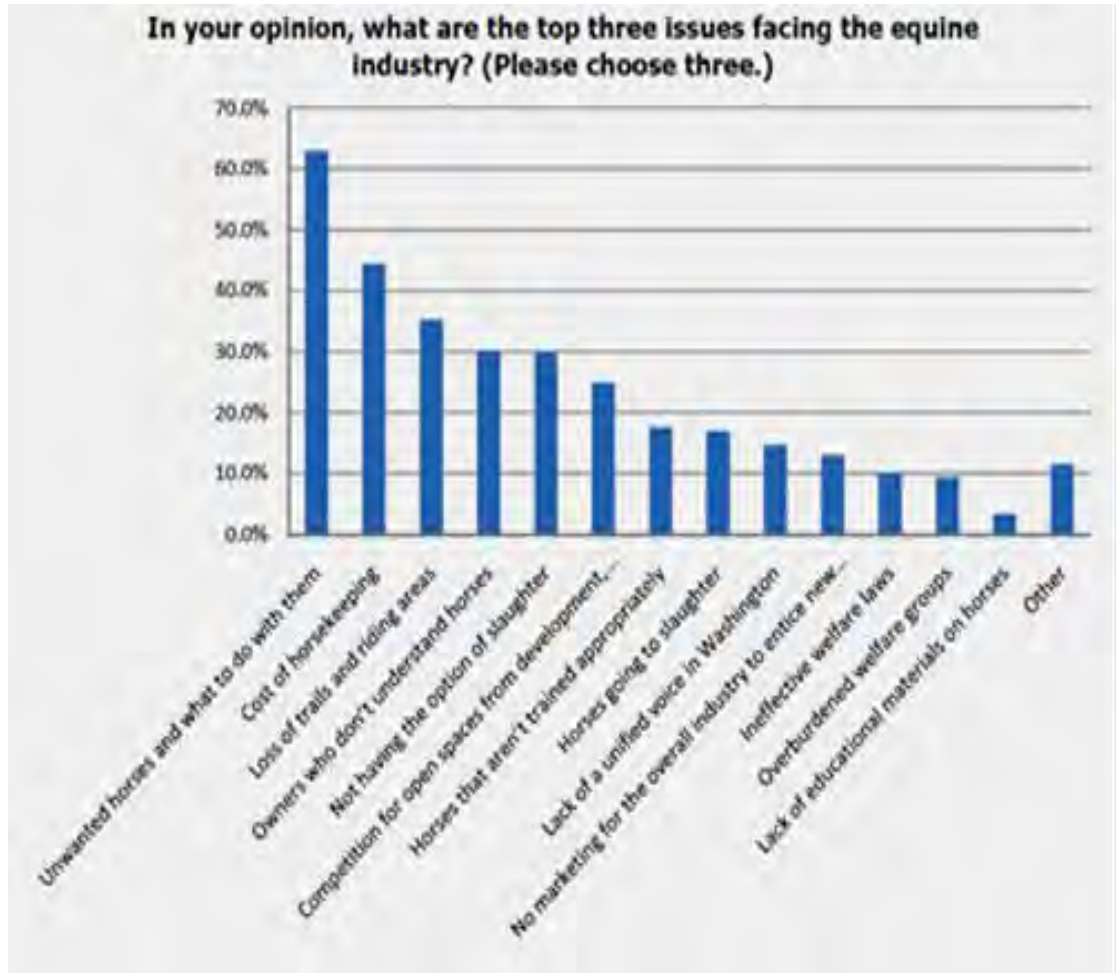
1. Publicize adherence to the American Horse Council Welfare Code of Practice, positively reinforce ethical treatment of equines, and reward good horse stewardship; and
2. Provide information and easy access for county residents to familiarize themselves with the stable licensing process, including a means to determine if a stable is licensed and how to report an unlicensed stable.

<sup>30</sup> American Horse Council website, [www.horsecouncil.org](http://www.horsecouncil.org)

<sup>31</sup> Maryland Horse Industry Board website, [www.marylandhorseindustryboard.org](http://www.marylandhorseindustryboard.org), “Licensing”

REFERENCE A

American Horse Publications Survey Data – Unwanted Horses as Top Issue



**Source:** <sup>1</sup> American Horse Publications, “American Horse Publications Survey Sheds Light on Equine Industry Trends,” April 30, 2010.

## REFERENCE B

### **Welfare Code of Practice - American Horse Council**

#### **Introduction**

American society has grown away from its agrarian roots of only a few generations ago. The horse, which was once a staple of American agriculture and general transportation, is now used primarily for breeding, competition, sport, recreation and entertainment, although there are still many horses used for work on farms and ranches, and in urban areas and exhibitions.

The horse industry is committed to the safety, health, care and welfare of all horses and to always “Put the Horse First.”

We address equine welfare and responsible care (1) by supporting a uniform Code of Practice regarding the responsible breeding, training, competing, care, use, enjoyment, health, transportation, and retirement of horses; and (2) by initiating communication with the public, the media, federal and state officials and within the horse community regarding these issues.

#### **Our Commitment to all Horses and the Horse Industry**

The organizations listed below are committed to the principle that the welfare and safety of the horse is the guiding principle in the decision-making process for all owners, service providers, organizations, events and activities.

WE ARE COMMITTED to the dignity, humane care, health, safety and welfare of horses in all our activities and care. These are our highest priorities. We are the stewards of our horses and must be firm in the standards and practices that guide us. Our first principle is:

The welfare, safety and stewardship of the horse is the guiding principle in the decision-making process for all segments for the horse industry.

WE ARE COMMITTED to promoting responsible breeding practices and to produce better horses, not just more horses.

WE ARE COMMITTED to responsible training techniques. All training should be done with the maturation and ability of the horse considered. Horses should be prepared for competition with proper training and conditioning methods. Excessive disciplining methods, whether in stables, training areas, or during competition, will not be tolerated.

WE ARE COMMITTED to educating owners, trainers, veterinarians, competitors, exhibitors and recreational riders to ensure that they know and respect their horse’s abilities and limits, and their own, so as to not push the horse or themselves beyond their ability level.

WE ARE COMMITTED to making all competitions fair and ensuring all competitors an equal opportunity to succeed. Performance-enhancing drugs, practices or equipment have no place in competitions or exhibitions. Effective drug testing by accredited laboratories is essential to the safety and welfare of our horses and the public support of competitions, with appropriate penalties levied for violations. The welfare of the horse must take precedence over the demands or expectations of owners, breeders, trainers, sellers, buyers, organizers, sponsors, officials, or spectators.

WE ARE COMMITTED to the welfare of the horse as paramount during competition. The horse industry should invest in the infrastructure, environment and facilities to provide a safe environment for all horses in all activities, whether breeding, competing, or simply riding. Any facilities that house horses should be committed to the appropriate care and treatment of all horses while in their facility, and should be designed with the environment and the intended use of the horse in mind.

WE ARE COMMITTED to minimizing injuries to horses during training, competition, use, or work. Whenever possible injury data should be collected, documented and reported to the governing body of the competition or any other injury database for analysis in order to ensure a safer environment.

WE ARE COMMITTED to the continual review, evaluation and improvement of all rules, regulations, policies and practices in all equine activities, based on science (where indicated). When warranted, they should be refined or changed. This includes existing practices to ensure they are not being perceived as acceptable, particularly if new research has called them into question.

WE ARE COMMITTED to providing continuing education on all activities involving horses and eliminate inhumane practices as well as strengthening sanctions for non-compliance.

WE ARE COMMITTED to educating all people who own or work with horses to ensure they are knowledgeable in the proper husbandry, care, and handling of horses. Each horse should be observed frequently to ensure that they are healthy. In consultation with a veterinarian, all such individuals should develop a sound health care program, appropriate to the facilities, environment and needs of the horses.

WE ARE COMMITTED to providing an environment in which anyone aware of equine cruelty or neglect is willing to report it to the proper local, state or federal authorities. Should an incident occur at an event it should be reported to judges, stewards, responsible authorities or the sanctioning organization.

WE ARE COMMITTED to improving the health and welfare of horses through scientific research, collaboration, advocacy and the development of appropriate rules. The industry should continue to support and work with the many individuals, universities,

veterinarians and foundations doing and funding equine health and welfare research in order to reduce injuries and improve health.

WE ARE COMMITTED to horse owners and caretakers ensuring horses in their care are current on vaccinations and following best practices to minimize infection and disease. When a disease outbreak occurs horse owners and events must act quickly and responsibly, monitor the horses, report the outbreak to, and cooperate with, veterinarians, authorities, facility management and all stakeholders to bring a rapid resolution to the outbreak.

WE ARE COMMITTED to ensuring that our horses will have an opportunity to transition to additional careers, uses or activities as the need arises. When necessary, owners and veterinarians may have to consider end-of-life decisions. The welfare, safety and dignity of the horse must continue to be the guiding principle in deciding how and when to provide a humane death.

WE ARE COMMITTED to being transparent about our activities in order to ensure the public, the media, federal, state and local officials and the various segments of the horse community understand what we do, why we do it, and support it.



**Organizations Supporting the Welfare Code of Practice**

American Association of Equine Practitioners  
American Endurance Ride Conference  
American Paint Horse Association  
American Quarter Horse Association  
American Saddlebred Horse Association  
Appaloosa Horse Club  
Arabian Horse Association  
Florida Thoroughbred Breeder's and Owner's Association  
Harness Horsemen International  
International Walking Horse Association  
Kentucky Horse Council  
Kentucky Thoroughbred Association  
League of Agricultural and Equine Centers  
Master of Foxhounds Association  
National Cutting Horse Association  
National Thoroughbred Racing Association  
North American Trail Ride Conference  
National Reined Cow Horse Association  
Pinto Horse Association of America  
Tennessee Walking Horse Breeder's and Exhibitor's Association  
The Pyramid Society  
Thoroughbred Owners and Breeders Association  
U.S. Dressage Federation  
U.S. Equestrian Drill Team  
U.S. Equestrian Federation  
U.S. Trotting Association



# Public Forum

## **OVERVIEW**

The Chair, K. “Feya” Moore, Esq. called the meeting to order at 8:45 a.m. The Vice Chair and five other members of the Task Force were present. The Chair indicated that this was the Public Forum Meeting of the 2010 Equine Industry Task Force and that public testimony would be taken. The Chair welcomed the people present.

The Chair described the work of the Task Force to date and indicated that a difficult task was determining which issues to cover. The Chair indicated that the work of the Task Force was based on the 2009 Maryland Horse Farm Report and the Subregion 6 Master Plan. He further indicated that the Task Force was divided into Subcommittees ranging from zoning and land use, marketing, environmental and special projects and he also mentioned the review of broad policy initiatives.

### **Public Testimony**

Arthur Lisi - Mr. Lisi is a harness track trainer and racer who has been displaced due to the closure of Rosecroft. He said that he would not address the issue of slots and he wanted people to appreciate the value of horses and horse racing. He indicated that there is great value in horses and that he and his colleagues are looking for a place to train and race harness horses.

Yates Clagett - Mr. Clagett represented the Farm Bureau as well as the Soil Conservation District. He commended the Task Force for its work on the important equine issues including the right to farm. Mr. Clagett spoke about the economics of keeping farms profitable and for supporting the local economy through the horse industry. He thanked Councilmember Dean for forwarding and supporting the Task Force legislation.

Janna Howley - Ms. Howley represented the University of Maryland Extension Service. Ms. Howley spoke in support of agritourism in the county. She indicated that agritourism is a vital resource for the County. Task Force member Stephen C. Kensinger indicated that the University of Maryland Extension Service provides an important asset to the equine industry in the county.

Dave Turner – David Turner testified on behalf of Dick Krueger and the Broad Creek Historic District Committee at the Public Forum. Mr. Turner testified there are numerous horse farms in the Potomac River Valley, from Oxon Hill Farm, which adjoins Washington D. C. and National Harbor to Accokeek. The Broad Creek Historic District Committee would like to have this area recognized by the Task Force and the county as “horse country”. The main concern is Harmony Hall, a historic home on 68 acres fronting the Potomac River, owned by the National Park Service.

A recommendation that the Department of the Interior retain the linking equestrian trails and the horse barn on this property has been requested.

Mr. Turner spoke regarding the historic property in the County and how it is supported by a tradition of horse farms. He spoke of the County as being “horse friendly” and indicated how vital it is that the horse industry be supported. Mr. Turner also spoke about the Anacostia River Valley and the Potomac River Valley and their watersheds. He brought up the significance of the Broad Creek Historic District in the Rural Tier. Mr. Turner indicated that the small horse owners need to be supported in the developing and Developed Tiers, as appropriate. The Chair asked what Mr. Turner would do about encroachment. Mr. Turner responded that an alliance is needed between the horse owners and the historic preservation resources. Task Force member Sandra Crow asked Mr. Turner how to continue with this alliance. Mr. Turner responded that persons should come before the Historic Preservation Commission and express their support of the horse industry in the County. Erin Pittman asked Mr. Turner in light of the importance of saving small horse farms are there any environmental issues regarding this issue. Mr. Turner indicated that no one has gotten very far on agriculture.

Felicia Hillary - Ms. Hillary thanked the Task Force for its work regarding the horse industry in the County. She owns a horse farm in Anne Arundel County and has recently had to move her horses from Rosecroft. She has lost a place to train the horses as Laurel Raceway and Bowie Raceway train only for thoroughbreds. She indicated that the sire program affiliated with Rosecroft has also been eliminated.

To recap the Chair introduced the Subcommittee chairs and gave a brief overview of the subject matter that each will be handling.

The Public Forum adjourned at 9:40 a.m.

## Public Forum

August 19, 2010  
8:45 a.m.



### Transcription

(Smooth verbatim)  
Transcriber - B.J. Stone

#### Task Force Members Present

K. Teya Moore, Chair  
Dorothy Troutman, Vice-Chair  
Bonita Williams  
Harry Ketts  
Stephen C. Kensinger  
Erin Pittman  
Sandra Crow

#### Speakers Present

Arthur Lisi  
Yates Clagett  
Janna Howley  
Dave Turner  
Felicia Hillary  
Carol Dyson

---

#### Moore:

Well, Good Morning Ladies and Gentlemen, thank you for coming. This is a Public Forum that's being held for the Prince George's County Equine Industry Task Force. The purpose of the Public Forum is as we start to complete our report to the Council for submission in September; we found it advisable if not prudent to reach out to the community at large and encourage and solicit comments, input from the horse industry specifically those are involved or who advocate with any interest within the industry to come to us and give us their impressions and suggestions like I indicated.

Before we finish our report, simply put to make sure we didn't miss anything, to give us a different perspective that we might consider vital and necessary for submission to the council along with what we have already done. We had a very short line, time line to prepare our reports. We started, I think it was early July when we first constituted the task force and we were given a tight dead line by the Council to complete our work and submit our report in September. So throughout the summer, we've, I think I can speak for the members of the task force engaged in a herculean effort to try and assess and accumulate as much data as we could and of course the first issue was probably the most challenging which was to get our focus, to decide what issue we should delve into and dedicate most of our time too. And after a couple of early meetings were we talked about the Maryland Horse Farm, that took place over here at the Equestrian Center in 2009 and we studied the Master Plan for Subregion Six, we made some decisions that we would look at for over arching areas. On those areas, of special projects, I can explain that a

little more on Zoning, Land Use and Marketing as well as the Environment. And so we then we split up and assigned members to each of those subjects, so that we could more discreetly within each group start to look at the data and then issue a report. Each of those subject committee's will be issuing their report to the entire task force next week on Thursday and of course your more than happy are invited to attend that as well as we start to discuss and prepare for our submission to the Council the reports.

We also have look at and were considering so broad policy initiatives. I happy to see that Yates Claggett is here for example, who is intimately involved in a number of the issues that not only impact on the horse industry, but on agricultural, general speaking. We know that there are a number of groups that are involved in the state that were sort of catching up to. We want to work with them in a coordinated fashion and if we can help to facilitate any initiatives that they are undertaking for example; how we look at agriculture for purposes of preserving and sustaining. Not just the horse industry, which I'm reminded of my vice-chair, I should also mention enhancing and expanding. But other areas in the agricultural industry as well, so for example Harry Ketts who is Chair of the Zoning Subcommittee and on Land Use as well has been working very closely with Mr. Claggett and some of his stakeholders as we sort of coordinate the efforts of this task force and what's being undertaken by those groups, specifically the Farm Bureau, Soil Conservation, The Maryland Horse Council. And I'm probably forgetting, Harry help me, I can't remember who else there was but I think you get the point.

So without further adieu, today is really about you. I encourage you to come and speak with us giving us your thoughts and your input and suggestions on how you think we can deliver on our assigned task, which is to report and access to the Council on the economic viability and potential of the horse industry here in Prince George's County. So without further adieu, I would like to call the first speaker who is signed up and that's Arthur Lisi. Mr. Lisi, I hope I pronounced your name properly.

**Lisi:** Lisi (correcting pronunciation)

**Moore:** I'm so sorry, please feel free, we are going to try to do it in sort of an intimate setting if you wouldn't mind. And you don't have to stay back there, you can come right up here, and you can speak to us directly.

**Lisi:** I'll stand.

**098/Moore:** That's fine. Where ever you feel more comfortable. If you could just give us your name and tell us who you represent and what you would like to discuss with us today we would be more than happy to accommodate you.

**Lisi:** Thank you. My Name is Arthur Lisi; I'm a harness horse owner. My son is a blacksmith and my wife is a trainer. I've owned horses and I live in Virginia and like I tell everybody for the past 40 years, I've, probably 40, 30 or 40 years I've been driving over the Woodrow Wilson Bridge to Rosecroft to train and race. So without getting into too much of the politics of it all, really where we stand on all this is that with the closure of Rosecroft as a... and first let me make a distinction.

Rosecroft as an entity because I know there have been a lot of thing about saving Rosecroft, as one item and then a horse industry part of Rosecroft seems to be another,

another item and they don't always meet. But, we have a stable area and a training track there and since that shut down, most of the people have had to and obviously had to leave the area. As it stand now, in Prince George's County and really in Maryland because Ocean Downs barn area is also closed down for construction, the Harness Industry really has no place to race or train in the State of Maryland. At Rosecroft for instance, we had a barn area where people stabled and we also had some farms in Prince George's County area. Some of those people had training tracks or whatever or job tracks. But ultimately they all at some point in time had shipped into Rosecroft to train their horses. So when we lost not only the barn area but the training facility and the racing facility, you know, kind of, lots of people have left to Delaware. And one thing I'm sure any body that knows, in horse racing knows that we probably spend more money than make. And sometimes we are even happy to do it.

This is an industry that is like employees losing their jobs, this is an industry that spends a lot of money and devotes a lot of time, brings in a lot of people to what they do, so even though we are talking about Prince George's County, lots of the owners live in Virginia. For instance so, when their horses were going or they wanted to see their horses, they traveled to Maryland; spent money in Maryland. I've probably spent... the ratio of money spent to Virginia is probably 90 to 10 because I was over here. So I don't think it's just a local issue, this is a bigger, broader issue. Now what's happened with both Ocean Downs and Rosecroft and like I say, I'm not going to delve into the slap stuff because that's a different issue. The Horse racing issue is something that offers something different to people than gambling. You know there is some... people say you know there some special things involved in being around horses in general. But you're not getting from one... if I'm going to play cards, I'm going play cards. But, you know, you look how we are worried about unemployment and these problems and that problem. There are special things involved with working with horses that you don't get from working with these other things and I think is part of that is , we failed to convey that to people. You know when an owner, when a young child or somebody comes down and works with a horse and does something, there is value in that. For instance, Betsy Brown who use to stable at Rosecroft, she would take her horses to a lot of the schools, and underprivileged children where they get to see these animals. So, different experiences. So that's also a great loss that when we just narrow our industry down to one little thing about slot machines or gaming or this and that and I'm not denying their importance. But we have to make sure we keep the whole spectrum there because there is great value there in the other things as well.

I guess I'll just wrap up by saying at this point in time the people who race and train harness horse anyway have nowhere to race or train in Prince George's County anymore. It's for some of them to go to Delaware so even when we talk about tracks reopening there are two issues. One is that they have left and there is no racing. The second is if there is no nearby place to train your horse or deal with it, if I've gone across the bridge to the Eastern Shore, I'm pretty close to Delaware; I'm not likely to bring my horse back

here. Even if I live here, because it's just not economically sound. So what we're looking at is we need someplace especially if we want to keep this alive in Prince George's County, we need to revitalize this industry. We also need someone to race, to train and stable our horses here. Because there are a lot of little small track and farms in Prince George's county and eventually they are going to go out of business. They are going to leave the state. And you know what, we did not take from the community, we always spent. I would hate to see how much we spent at the CITGO on St. Barnabas Road every day to ship to Delaware. So they got our money, believe me. So I think it's an important issue and I support all the other things but as horsemen, our main concern has to be about the survival of our sport and our industry. And I think we need to do a better job maybe in showing people there is a bigger value than just "Oh there's a horse, so be it". When I would go down there couple hours every morning, you don't come back tired. You're like you're ready for the day and these are things that are important and I felt we should have done more community things because you know if I go value out of it, I'm sure someone else. You know how many people come to us and say "Oh my gosh, I've never been there, that was great working with these horses". So that's another side of it, and so that's all I have to say.

**Moore:**

Well thank you Mr. Lisi. I do appreciate your time. Let me do this before you step away if you wouldn't mind. I'm going to introduce the member of the Task Force who are here. I did forget to do that. I have here immediately to my left, Dorothy Troutman, is the Vice-Chair and actually my sage, and someone that I look to and turn to almost consistently as we work through a lot of the difficult problems. And Dorothy is also here representing the Special Projects Subcommittee, which has looked at not just Rosecroft but other venues and the possibility to enhance and expand the horse industry in Prince George's County.

To my immediate right I have Sandra Crow, who if I'm not mistaken is the Chair of the Citizens Advisory Group here in the horse industry and she is also intimately familiar and a long standing stakeholder in the horse industry, followed by Professor Erin Pittman, from the University of Maryland, who is the Chair of our Environmental Subgroup, our subcommittee (my apologies). Steven Kensinger who is the Chair of the Marketing Subcommittee; and Harry Ketts who is Chair of the Zoning and Land Use Subcommittee. And before you leave us I just wanted to see if there were any questions or comments any one wanted to make to Mr. Lisi before we move on. Well I do appreciate your time Thank you very much. Well, we have from the Prince George's County Farm Bureau, Yates Clagett. Mr. Yates Clagett.

**220/Clagett:**

Thank you; I'm Yates Clagett, Prince George's County Farm Bureau President. I wear several hats. I also work for Soil Conservation District as a Land Preservation Program Administrator, as well, as a local farmer. I want to commend you all for really taking this on. And I'm speaking more towards what Harry work has been doing; who I've worked with a lot to try to take on the definition of agriculture and define the certain aspects of it is something that has needed to be done for years. To try to strengthen our right to farm law is a major task. Thank goodness you all took that on. Because I don't think there,



there was no other group ready organize well enough to do that. And Harry, as hard of a time I have given you, I appreciate that. You've done a great job. One thing that the Farm Bureau needs to do in the future and Harry and I have spoken about this a lot is to diversify our membership. Of course people typically have not been Farm Bureau member and as you all well know the horse industry in the county is the driving factor behind keeping our services in this county, keeping the feed farm and supply stores in the County. If it wasn't for the horse industry, we'd been out of business a long time ago. We all know that.

The horse industry keeping our hay farmer in business, and allowing them to expand and doing other things as well as keeping their land. And keeping the land also is one of the most important things the horse industry does. By virtue of the economics of the horse industry you're keeping farms profitable. As land preservation guy the cheapest way for the state and the county to save property is to keep you economically viable. Keep those farms making money. So, I have no other comment than to say, great job, we are here, Farm Bureau going to support everything that you've done. We do have a few comments which we will follow up on later on in the week with the stuff that we were given yesterday. Other than that, I thank Mr. Dean for putting this thing together. I don't think this could have been done any other way. Good Job. Thank you.

**Moore:**

Well, thank you very much Mr. Clagett. And I just want to say that we appreciate the time that you have given to us. You have been a tremendous resource to this task force. You do wear a number of hats and I recall the one group that I failed to mention was the Agricultural Preservation Working Group in addition to Soil Conservation. In addition to the Farm Bureau and so we reached up to you and we do appreciate the time and courtesy you have extended to this task force.

We know have Carol Dyson from University of Maryland Extension. If you wouldn't mind coming up and speaking to us we would appreciate it.

**Dyson:**

(Relayed speaking to Janna Howley)

**Moore:**

Ms. Howley, please join us.

**Howley:**

Good Morning. I'm Janna Howley. I'm the Agricultural Marketing Specialist for Prince George's County. I work out of the University of Maryland Extension Prince George's County Office in Clinton. I am also the Co-Chair of the Ag Preservation Work Group to which you referred. I just want to say, I want to sort of reiterate what Mr. Clagett said; it's incredible what you're doing with working on some of this legislation and tightening up the language for agriculture and agricultural land and right to farm because it is something we desperately needed. I also just want to extend my services as the person who has been brought into our County to help promote agriculture in all of its sort of numerous faces. And one of the things that I have been working on is Agritourism brochure for Prince George's County. And one of the things that I found incredibly frustrating and I worked with Harry a little bit, was that I didn't have any equine businesses in my brochure. A couple of the stables that I tried contacting to see if they wanted to be promoted and encourage to list in the brochure I was not able to get responses from and so I would like to apologize ahead of time that there will not be

stables in the Agritourism brochure, but moving forward I want to make sure that the Equine Industry is included in all the work that do and all the promotion that I do. And sort of try to help you find outlets and avenues to promote this entire community. We've all sort of said that it's and incredibly valuable part of our agricultural economy. I just wanted to offer that. Thank you.

**Moore:** Well thank you very much Ms. Howley. We do appreciate those comments. Any questions?

**Kensinger:** Well, Ms. Howley, I wish I had of met you a few weeks ago. I'm the chair of the Marketing subcommittee and I also have an office in Clinton and I will make sure you get my card before you leave. We've looked at a lot of things that you mentioned and one of the Marketing Committee, one thing that we really kind of uncovered was, that the information on equine industry farms, boarding facilities, it's really kind of spread out all over the place and there is no one place for people who are interested in coming out touching a horse, seeing a show, taking their first riding lesson, or just to see what's going on in Prince George's County just doesn't exist. I'm glad to see that you're doing something through extension and we definitely need to partner up to make sure the recommendations to council go hand in hand with what you're doing. Thank you.

**306/Moore:** Great, Well actually we only have one other person who has signed up, Dave Turner, from Broad creek, Maryland. Good Morning Mr. Turner.

**Turner:** Mr. Chairman.

**Moore:** If you can tell us who you represent or even if it's yourself.

**Turner:** Sure, I represent myself; I live in the County Rural Historic District. And it's to be a museum for the way the County was for the future. And it's been designated for 25, 27 years now. And it's in the Potomac River Valley, immediately north of Fort Washington and south of National Harbor. The two hopes that I would have, are built on the work of people like Dorothy Troutman, Yates and Sandra. The work that they have done in the 16 years that I have been here in the County; I lived in Georgetown and other places in the area, when I discovered Mrs. Troutman's work and Sandra's, I was amazed that they had a fight going to make horses part of agriculture. I watched that fight so diplomatically and successfully.

And standing on the shoulders of these giants, I would ask rather boldly or brashly that we even go further. And one is geographical expansion and to expand the sensibility of this group, if you're the right body to a different segment of the horse industry. And it's these two hopes. One is geographically; while this county is well known along the 301, Bowie, Upper Marlboro, Aquasco corridor as horse friendly or at least a horse presence there. There is two other river valleys in the county, the Anacostia river valley and the Aquasco river valley that I live in. The Rural Tier doesn't end at Brandywine or Aquasco, it goes to Accokeek. There are segments of the Rural Tier in the Anacostia River Watershed where there are horse farms. The Broad Creek Historic District is in the Rural Tier. It's an island. And it's certainly, probably, it's undoubtedly the closest large green space to the Nation's Capitol; its, not a national cemetery or something. These communities over there, inside the beltway, not just Rosecroft, but inside the

beltway in the Developed Tier, are horse owners. And these are the people that the American Horse Council surveyed back in 1998-99 and found that these people, the one, two, three horse owners or people who board one, two or three horses are treasures in their community.

Not every farm has to be a race horse breeding farm of 250 acres and if our efforts are save those people first, in my view it's like the Titanic, people shoving outside the raft boats and say, "I'm more important, get out, step aside". It was not only un-courteous; it probably wasn't good for moral. We here from the large horse breeding facilities when they need help. The, I would urge that we have a much more cooperative two way help thing. When the small horse owner inside beltway or in the other parts of the county need help with the trail the answer shouldn't be well what does that have to do with racing? So I would say we commend you and we urge you to adopt the small horse men. We are the massive as the survey showed, the American Horse Council showed. We are the overwhelming the largest owner of horse in this country. And it's like any industry, it's tough. But it's oil industry or anything...builders. It's always easier to note the large company and the large holdings. It's tough to remember what the, you know really, the back bone of most of our industry really is, real tough especially when it comes time setting priorities or asking for favors. We can be there, I think, to support our large horse business friends. But, let's make it a two way street. And let's remember the horse people in the Potomac Valley. We have trail problems, we have, and we would love to see Rosecroft saved. And I would add to that, as a foot note, I don't know how you're going to save Rosecroft as a horse facility without saving Kildare. I just don't know. I mean I know it's hard to look at Kildare I mean it's owned by the golden boy of our county right now. But he's not unreasonable and I think if he saw a vision for Rosecroft that ya'll came up with it might be clear to him that he may even make a buck by selling Kildare and its acreage. As part of a horse facility, I think that would be a vital part of a horse facility that has more purpose than just harness horses, which I love by the way. I'm a big fan of the trotters and the pacers, so, let's see if I've missed anything. I think that's enough challenge for you. I wrap it up with a big thanks, big thanks. This lady right here. Mr. Chairman I look forward to working with you.

**Moore:**

Before you go Mr. Turner, if the panel wouldn't mind; just give me your perspective on encroachment, as it relates for example to the small farmer. Give me your impression on this expanded geographical footprint that the horse industry has defined and what your response would be on what you think we should do in terms of encroachment on that footprint.

**Turner:**

Oh you've asked the toughest question on the whole business, if I had the answer to that, I don't, but I can give you my opinion about what I see from where I sit. And I sit three miles from DC. The people that come to my farm to ride, my tiny farm, are U.S .Congressman and the industry people. I think the horse will make, what the gentleman from the Rosecroft speaker, Mr. Lisi, said about when we, our culture losses the feel the sight of the horse in our daily lives, we lose something in our souls is right. So we try to bring them out and your right and as the city as the massive city, that faces of DC, and we

are the face, we face DC, in the Potomac valley. Were not 25 miles down the road, we look at the building from our homes, the capital building. When you're facing that, that megaliths, your saying, well we need to save little enclave of horsedom so that people can know and see and feel with relax with. What a nice way to drive home when you drive by small horse farm and then you're just driving by more strip malls, or another new subdivision, so our view is that we have something of great value, not only to Prince George's, but to the metro area. And our view of how do we save it, I think we have to have the alliances with people like Yates (Mr. Clagett). I think the alliance with the historic preservation is absolutely critical. Because many of the neighborhoods were there are still horse are the nice, the reason they were old is because they were the nicest places to live. Probably the Indians thought so too, that's where they settled before the colonist got here. So, these are beautiful places. They could be considered lucrative for encroachment and development if you have that kind of eye. But I think we lose something by giving them up. And I think we need to link up with our Historic Preservationist friends. I think there needs to be a even bolder alliance than with farm bureau. I think we need to link up and make the very difficult connection that farmers have to struggle with the environmental movement. With caveats, they see the value of horse agriculture. And I think, they are the sleeping giant. The environmental people in the County far outnumber our preservationist and horse people. If we could link up with them and that sleeping giant ever woke up I think you would have an alliance that would be as strong as the one we saw in Delaware in the Brandywine River Conservancy effort and north of Baltimore and Baltimore county were there has been serious land preservation. It was done through an alliance; it wasn't just done by a few Weiss' and the Vanderbilt's, DuPont's. It was done by an alliance that was carefully crafted back in the 50's and 60's and I think we need to do the same thing If we are going to handle encroachment in a sensible way. Develop where we should develop and save what we need to save.

**Moore:** Thank you very much Mr. Turner. Any other questions?

**Crow:** Dave, I know you have an incredibly busy schedule. But, who could be the person to help for this link; it would be a person like you, who has all this historic interest, a great asset.

**Turner:** I'm not laughing.

**Crow:** Because we need someone to help form that link to get it moving. I mean what your saying is absolutely 100 % correct. I mean there are people all over the county with one or two horses. And you know you're driving stuff, the driving community not the harness racing but the people who drive for fun and sport; like you have and Plantation Driving Club and all that stuff. How we make that link to get it before the right people, the thoroughbred people yell at us, that's why we hear them more. Squeaky wheel gets the grease. But we do need to hear from everybody and but in historic parts and environmental parts are very important. But you're a very good link for that. But how could you help us get us some direction?

**Turner:**

Sandra, thank you, I appreciate the comment. First off, my response is, if you build it they will come, Mr. Chairman you got this committee. Let's kind of see who steps forward. I think you may be pleasantly surprised. You're going to find natural allies. People like Fred Tutman, you know the environmental side, over here in this part of the County. You're going to find allies in the historic community. What I've been doing is chair of the county Historic Preservation Committee. Is every time parks department acquires an old horse farm, a small horse farm in a neighborhood, whether it's in Bowie or down our way, I say well this is wonderful, ya'll gonna keep that horse barn going? And they say "Oh no, the bicycle lobby wants us to put a bike trail through it and we were just going to tear the barn down". And Dorothy has seen it, seen the (HPC) The Historic Preservation in action. We've got a majority on the commission as this council and county executive has appointed for the next three years. To support the kind of pressure will bring before our board and when something like this is coming up and the next ole farmer along the rail road track is being bought, by Parks Department, God Bless them. When this Parks Department gets a hold a property they run it right, they run it well. But they don't run it with horses, in their definition. Now, we will have ya'll to turn to testify before us to insist. We have a lot mounted police cadres in this region because of the capital city. They don't have stations were they can put their horse for two or three days when they need them for a parade or a security detail, or something like that. Why not have some properties designated for that use instead of just letting it go to waste. The saddest thing to me is that I just have to say it again, people, I read the Equiery, and they say "Oh", they lament at length of large farm in Maryland and its closing and how sad it is. And oh the magnolias are dropping their leaves. For me dropping down my part county and seeing a little two stall stable that literally is abandoned and has that look and you know it's not coming back and it gets my heart. And I know its gets the people in the surrounding suburban developments because it's a treasure for them. And we can't buy for the County Parks Department every single property that horse people are currently keeping open space green and lovely to look at. I think I would just go back and say, as we approach these environmental and historic preservation and community needs. I guess I need to expand it and say when a neighborhood association wants a horse farm saved, hopefully ya'll will be there to stand beside them and say in the face of the pressures for encroachment, no not here. This is going to be saved for horses and agriculture. I think you're going to find people step forward now that you're here.

**Pittman:**

Hi, I'm Chair of the Subcommittee for Environmental matters and one thing on that committee had mentioned numerous times, even the committee as a whole, was small farms and the small farms and the importance of saving them. But one thing that I've had a hard time wrapping my hands around is maybe some of the problems that they have from an environmental stand point, in which we could help. They are some things that I found but other things that I'm not even aware of so if you could give us some ideas or guidance's to some of those issues that they face. That could be very helpful to us.

**Turner:** I would be glad to talk to about that in the future but you're on the cutting edge, I mean you're going into an area that no one has gone, that no one has gotten very far forward on so, I appreciate the work your going to do.

**400/Moore:** Thank you very much. I don't have any one else but I do note that a couple have come forward. Please do come forward and if you could just tell us who you are for the record. Felicia Hillary.

**Hillary:** Mrs. Troutman it's good to see you again.

**Moore:** Good Morning Ms. Hillary. Thank you for coming.

**Hillary:** First of all I would like to thank the County Council for putting the task force together because I think it's something Prince George's County really needed. And second of all I think that it's great that we are trying to save Rosecroft Raceway. I became part of Rosecroft Raceway in 1976. I was a resident of Prince George's County until I got into the Horse Business and bought myself a farm just across line in Anne Arundel. And what I would like to say is that I would like to have Rosecroft preserved as a racing track. I understand that the people from the race track, the CEO's, the Board of Directors want to put it as a gambling casino. I also understand the Prince George's County opposed gambling even though the referendum of the Prince George's County people voted for slots; the County Council saw fit not partake in the slot program that was proposed. I think the Rosecroft could be a very educational program. I think with the way the track is situated, and I think I would like to Prince George's County buy the Rosecroft Raceway. I would like to see it incorporated with their program there a building across from Bach Road, the new Sports Center that they are having there. And that's just a block away from Rosecroft Raceway. And I would like to see that Sports Center incorporated with Rosecroft Raceway and also become a training center. There are a lot of young men and women interested in horses, but we could train them to become drivers, we could train them to be shoe'ers, we could train them in so many aspects of the horse racing industry. And I would like to see something like that come before the slots come in. I know the slots will bring a lot of money to the county but I also think that we could work to some sort of middle ground and still preserve Rosecroft. I had to move my horses to Delaware because I had no where train them. Now I understand also that our breeding business has gone way down, we have lost so many stallions. I lost my stallion. And the people who had mares either had to go to Pennsylvania, Delaware, New Jersey to breed their mares, so they could take advantage of the Sire Stakes Program. Maryland had one the best Sire Stakes Programs in the Country and we had thousands of people coming to breed their mares to our Maryland Sires and we have lost that because there is no racing at Rosecroft. There is no place to train the horses. We have no place to board them, we have to go out to either small farms, but without a training track, it doesn't pay. Your losing, you're losing the first two and three years of a horse's life, if you're going to have them as race horses. Now the thoroughbreds their lucky because they have Laurel and they have Bowie Racetrack were they could continue to train. We at Rosecroft had nothing, we were told to move, we had to move, even though the horseman were willing to pay for stalls at the race track and to provide. Well, they were going to provide the

free labor to keep the track going and that was denied. So I sort of feel that this task force maybe could look into all kinds of reason to keep the Rosecroft track open. I have traveled around and talk to people and they say “why are you closing Rosecroft?” I have no answer. Without getting into the political reason and no money was there, but I understand what Rosecroft problems were. I also understand that lack of publicity, because you know, you don’t have money have money to promote it. It was a lot of things. So I just want to thank you all for giving us your time and the energy you’re going to expend and I hope that Rosecroft could be saved. Also I understand the Rosecroft is an agriculture according to the Zoning and Planning, its zoned agriculture. So can that probably be done, can anything be done with that property other than as an agricultural property? The Zoning and Planning have a right to change it after the rules had been made 100 or 150 years ago, so all that has to be looked into. It’s also a floodplain, so the best thing to do is to really leave it as a training track and has a racetrack and have the horsemen come in from all over the country, the horsemen used to come in to Rosecroft to train their horse to get them ready for the summer meets and all the Sire Stacks Programs. Now we had to have our Sire Stakes Program run on a Saturday at Ocean Downs and that track is, is not in the best shape, we all know that Mr. Richman (sp) is building a new track for his casino and the horses and a run around the track with pounding and the workman disturbing them and so forth so we lost our two year old we lost our three year olds because we didn’t have no facility to really train those horses like they should be trained without having to go to Delaware or New Jersey. And I just want to thank you and as I say I’m a very small person, very small farmer owner and my horses are not at my farm anymore. So I have to send them over to where they could be trained. I want to thank you all.

**Moore:**

Well Mrs. Hillary, let me just reassure you at least from one perspective, I think I’m on safe ground to say that the Council will receive no recommendation from this task force that would change the zone that would adversely impact any venue or the activities, equine activates as currently constituted in the county. There will be nothing from this Task Force that will negatively impact where we are today. What we’re doing is to hopefully enhance and expand on the industry. We will do nothing to detract from it.

**500/Hillary:**

Oh thank you very much.

**Moore:**

I would just like to recognize Bonita Williams who is part of our Task Force, she joined us. Bonita is very instrumental on the Task Force; she actually works on two subcommittees, if I’m not mistaken. One would be the environmental subcommittee and the other is Zoning and Land Use. Thank you for coming.

Is there anyone else who would like to speak to the Task Force? Well I’m going break script, not that I had one, just too kind of enlighten each of you before you leave, I know you’re very busy. If you have some more questions after I say this please feel free. I just want to give you a little bit of insight as to where we are in the process. If you will recall I had mention that we had broken off into various subcommittees. And so just to kind of titillate your interest on where I think the subcommittees are and what reports they will be bringing back, for example Mr. Ketts on zoning and Land Use as Mr. Clagett

has indicated, is looking very intimately as to how we expand agriculture to include equine activities and equine facilities and so specifically we have defined equine activities and equine facilities for inclusion in the law to expand the reach as currently stated. We are also looking at Land Use and like I'd indicated to Ms. Hillary, we are taken no position or stance that would negatively any equine activity in the county or on the venues that are currently situated in the County. And as Mr. Clagett also indicated Mr. Ketts is working feverishly on the right to farm bill to make sure that what he proposed as the author of bill stand up to scrutiny and is compared favorable throughout the state with any other County and how they embrace the right to farm. I think I've fairly states what Mr. Ketts has been and will be doing through his subcommittee. And Mr. Kensinger, has really taking on, in a very masterful way I think, the issue of marketing when I first got involved with this Task Force, I spoke my sage, the women that I rely on intimately with every step of the way; and one of the things the Mrs. Troutman indicated was that we have a hidden treasure but there is no map. Nobody is trying to find it. And one of the issues we should undertake as a task force is to try and promote the treasure and to reveal it not just in the county but to those outside the county. And so I think that is a critical undertaking that we've done through Mr. Kensinger subcommittee and they have very very hard and I think we have some every sound reasonable recommendation for the Council along those lines. And Ms. Pittman has been imminently involved in that qualify and very much involved the Environmental issues and we said it is cutting edge stuff and it's not an easy task and so I'm glad and grateful that we have Mr. Pittman. And it's going to be a learning experience for the council and all those involved as we start moving forward in how we deal both small farms and large operations from an environmental perspective. And then Dorothy Troutman and been working with Gary Michael who is the chair of the Special Projects subcommittee and they have taken on the task of looking at all venues but they have zeroed in on the Equestrian Center as part of the Master Plan that we were given as a basis of our work. It was indicated that the Equestrian Center was underutilized and that was a primary asset in the Horse industry in the county... (Inaudible)

So I think that's a brief overview of what we have been trying to accomplish and I do appreciate specifically the comments about Rosecroft. I think that that is very useful. And I want to thank everybody that came to us today to give us their suggestions and comments. We found that very useful I think.

**Troutman:** Very positive suggestions. Really appreciated it.

**577/Moore:** Well thank you very much I guess that going to conclude our public forum. Have a good day.





# **County Council Resolutions**

**COUNTY COUNCIL OF PRINCE GEORGE'S COUNTY, MARYLAND**  
**2010 Legislative Session**

Resolution No. CR-29 -2010  
Proposed by Council Members Dean and Bland  
Introduced by Council Members Dean, Bland, Dernoga and Knotts  
Co-Sponsors \_\_\_\_\_  
Date of Introduction March 30, 2010

**RESOLUTION**

1 A RESOLUTION concerning  
2 Equine Industry Task Force  
3 For the purpose of establishing the Equine Industry Task Force to explore and facilitate the  
4 economic development potential of the equine industry in Prince George's County.  
5 WHEREAS, on August 6, 2009, the Maryland Horse Forum 2009 was held at The  
6 Showplace Arena and Prince George's Equestrian Center; and  
7 WHEREAS, over 300 representatives from every sector of the Maryland equine industry  
8 including racing, breed organizations, trail riders, service providers, show organizers, horse  
9 owners, therapeutic programs, rescue organizations, and government officials were present for  
10 this event; and  
11 WHEREAS, the Executive Summary of the Maryland Horse Forum 2009 Final Report  
12 recognizes the participants of the Forum as members of the "horse community" representing one  
13 of Maryland's most unique, historic, and economically significant industries; and  
14 WHEREAS, the Maryland Horse Forum 2009 Final Report includes recommendations and  
15 ideas presented by all segments of the equine industry which are focused on ways these various  
16 interests have identified to truly sustain and grow this enormous industry; and  
17 WHEREAS, according to the 2002 Maryland Equine Census Report, Prince George's  
18 County had the fourth largest inventory of horses in the State with nearly 7,500 horses, valued at  
19 \$63 million, housed, trained, and otherwise maintained on 1,170 equine operations covering  
20 11,700 acres; and  
21 WHEREAS, the Subregion 6 Master Plan, approved by the County Council sitting as the  
22 District Council on September 15, 2009, indicates that the equine industry is an important part of

CR-29 -2010 (DR-2)

1 the culture and history of Prince George's County and that the equine racing industry in the  
2 County is an important subsector and is closely related to the success of Maryland's equine  
3 racing industry; and

4 WHEREAS, the Approved Subregion 6 Master Plan contains policies and strategies  
5 designed to support the preservation and development of the equine industry in the County.

6 WHEREAS, Section 506 of the Charter provides that the Council may appoint, for  
7 designated periods, one or more temporary boards of citizens of the County who shall assist in  
8 the consideration of County Policies and Programs.

9 NOW, THEREFORE BE IT RESOLVED by the County Council of Prince George's  
10 County, Maryland, that the Equine Industry Task Force is created. The Task Force shall study  
11 the Maryland Horse Forum 2009 Final Report and the Approved Subregion 6 Master Plan  
12 policies and strategies, as appropriate, and provide recommendations to support the preservation  
13 of and the economic development potential of the equine industry in Prince George's County.

14 BE IT FURTHER RESOLVED that the Equine Industry Task Force shall be composed of  
15 fifteen (15) members who shall be appointed in the following manner:

- 16 (1) Two (2) members of the County Council, appointed by the Chairperson;
- 17 (2) A representative of the Economic Development Corporation, appointed by the  
18 Chief Executive Officer;
- 19 (3) A representative of the Office of the County Executive, appointed by the County  
20 Executive;
- 21 (4) A representative of the Maryland-National Capital Park and Planning Commission,  
22 appointed by the Chairperson of the Planning Board;
- 23 (5) A representative of the Maryland Equestrian Foundation, appointed by the  
24 President;
- 25 (6) A representative of the Maryland Horse Industry Board, appointed by the  
26 Chairman;
- 27 (7) A representative of the Prince George's Chamber of Commerce, appointed by the  
28 President;
- 29 (8) A representative of the Citizens Advisory Board for the Equestrian Center,  
30 appointed by the Chairman;
- 31 (9) A representative of the Prince George's County Conference and Visitors Bureau,

CR-29 -2010 (DR-2)

1  
2  
3  
4  
5  
6  
7  
8  
9  
10  
11

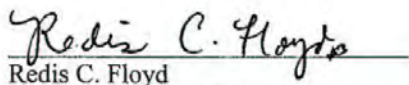
Inc., appointed by the Executive Director;  
(10) A representative of University of Maryland, Equine Studies or a member from an alternate academic equine community;  
(11) Two (2) members of the general public, who are Prince George's County residents, appointed by the Council Chairperson; and  
(12) Two (2) representatives of the Horse Racing Industry in Prince George's County.  
The Chairman/Co-Chairman shall be appointed by the Chairperson of the County Council.  
BE IT FURTHER RESOLVED that that the Council Administrator shall assign appropriate technical and administrative support staff to assist the Equine Industry Task Force in its work.  
BE IT FURTHER RESOLVED that the Equine Industry Task Force shall prepare and deliver its recommendations to the County Council on or before October 1, 2010.

Adopted this 20<sup>th</sup> day of April, 2010.

COUNTY COUNCIL OF PRINCE  
GEORGE'S COUNTY, MARYLAND

BY:   
Thomas E. Dernoga  
Chair

ATTEST:

  
Redis C. Floyd  
Clerk of the Council

**Prince George's County Council  
Agenda Item Summary**

**Meeting Date:** 4/20/2010  
**Reference No.:** CR-029-2010  
**Draft No.:** 2  
**Proposer(s):** Dean, Bland  
**Sponsor(s):** Dean, Bland, Dernoga, Knotts  
**Item Title:** A Resolution establishing the Equine Industry Task Force to explore and facilitate the economic development potential of the equine industry in Prince George's County.

**Drafter:** Jackie Brown, PZED Committee Director  
**Resource Personnel:** Nellvenia W. Johnson, Legislative Aide

**LEGISLATIVE HISTORY:**

<b>Date Presented:</b>		<b>Executive Action:</b>
<b>Committee Referral:</b>	3/30/2010 - PZED	<b>Effective Date:</b>
<b>Committee Action:</b>	4/7/2010 - FAV(A)	
<b>Date Introduced:</b>	3/30/2010	
<b>Public Hearing:</b>		
<b>Council Action (1)</b>	4/20/2010 - ADOPTED	
<b>Council Votes:</b>	MB:A, WC:A, SHD:A, TD:A, CE:A, AH:A, TK:A, EO:A, IT:A	
<b>Pass/Fail:</b>	P	
<b>Remarks:</b>		

**AFFECTED CODE SECTIONS:**

**COMMITTEE REPORTS:**

**PZED Committee Report** **Date 4/7/2010**

Committee Vote: Favorable with amendments, 4-0 (In favor: Council Members Dean, Knotts, Bland, and Dernoga)

Staff gave an overview of the purpose of the resolution. Staff also informed the committee of the need to include an additional "whereas" clause on page 2, line 6, concerning the authorization provided in the Charter for the Council to appoint temporary citizen advisory boards.

Council Member Dernoga suggested additional membership on the task force to include representatives from the racetrack (either horse owners or trainers). The committee amended the resolution to add two (2) representatives from the Horse Racing Industry in Prince George's County increasing the total membership from thirteen (13) to fifteen (15).

The Office of Law reviewed CR-29-2010 and found it to be in proper legislative form with no legal impediments to its adoption.

---

**BACKGROUND INFORMATION/FISCAL IMPACT:**

(Includes reason for proposal, as well as any unique statutory requirements)

This resolution is proposed to establish the Equine Industry Task Force to explore and facilitate the economic development potential of the equine industry in Prince George's County.

---

**CODE INDEX TOPICS:**

---

**INCLUSION FILES:**

---

**COUNTY COUNCIL OF PRINCE GEORGE'S COUNTY, MARYLAND**  
**2010 Legislative Session**

Resolution No. CR-47-2010  
Proposed by Council Members Dean and Bland  
Introduced by Council Members Dean, Bland and Knotts  
Co-Sponsors \_\_\_\_\_  
Date of Introduction June 1, 2010

**RESOLUTION**

1 A RESOLUTION concerning

2 Equine Industry Task Force

3 For the purpose of amending the composition of the Equine Industry Task Force.

4 WHEREAS, the Prince George's County Council adopted CR-29-2010, establishing the  
5 Equine Industry Task Force to explore and facilitate the economic development potential of the  
6 equine industry in Prince George's County; and

7 WHEREAS, the County Council desires to include further representation on the Task  
8 Force regarding the assistance that can be provided from the development community in Prince  
9 George's County to further the economic development potential of the equine industry; and

10 WHEREAS, Section 506 of the Charter provides that the Council may appoint, for  
11 designated periods, one or more temporary advisory boards of citizens of the County who shall  
12 assist in the consideration of County policies and programs.

13 NOW, THEREFORE, BE IT RESOLVED by the County Council of Prince George's  
14 County, Maryland, that the composition of the Equine Industry Task Force is hereby amended to  
15 include additional representation of interest.

16 BE IT FURTHER RESOLVED that the Equine Industry Task Force shall be composed  
17 of 17 members as follows:

- 18 (1) Two (2) members of the County Council, appointed by the Chairperson;
- 19 (2) A representative of the Economic Development Corporation, appointed by the  
20 Chief Executive Officer;
- 21 (3) A representative of the Office of the County Executive, appointed by the County  
22 Executive;

CR-47-2010 (DR-1)

- 1 (4) A representative of the Maryland-National Capital Park and Planning Commission,
- 2 appointed by the Chairperson of the Planning Board;
- 3 (5) A representative of the Maryland Equestrian Foundation, appointed by the
- 4 President;
- 5 (6) A representative of the Maryland Horse Industry Board, appointed by the
- 6 Chairman;
- 7 (7) A representative of the Prince George’s Chamber of Commerce, appointed by the
- 8 President;
- 9 (8) A representative of the Citizens Advisory Board for the Equestrian Center,
- 10 appointed by the Chairman;
- 11 (9) A representative of the Prince George’s County Conference and Visitors Bureau,
- 12 Inc., appointed by the Executive Director;
- 13 (10) A representative of University of Maryland, Equine Studies or a member from an
- 14 alternate academic equine community;
- 15 (11) Two (2) members of the general public, who are Prince George’s County residents,
- 16 appointed by the Council Chairperson;
- 17 (12) Two (2) representatives of the Horse Racing Industry in Prince George’s County;
- 18 and
- 19 (13) Two (2) representatives of the development community.

20 BE IT FURTHER RESOLVED that the Council Administrator shall assign appropriate  
21 technical and administrative support staff to assist the Equine Industry Task Force in its work.

22 BE IT FURTHER RESOLVED that the Equine Industry Task Force shall prepare and  
23 deliver its recommendations to the County Council on or before October 1, 2010.



CR-47-2010 (DR-1)

Adopted this 1st day of June, 2010.

COUNTY COUNCIL OF PRINCE  
GEORGE'S COUNTY, MARYLAND

BY:   
Thomas E. Dernoga  
Chair

ATTEST:

  
Redis C. Floyd  
Clerk of the Council

**Prince George's County Council  
Agenda Item Summary**

---

**Meeting Date:** 6/1/2010  
**Reference No.:** CR-047-2010  
**Draft No.:** 1  
**Proposer(s):** Dean, Bland  
**Sponsor(s):** Dean, Bland, Knotts  
**Item Title:** A Resolution amending the composition of the Equine Industry Task Force

---

**Drafter:** Jackie Brown, PZED Committee Director  
**Resource Personnel:** Nellvenia W. Johnson, Legislative Aide

---

**LEGISLATIVE HISTORY:**

<b>Date Presented:</b>		<b>Executive Action:</b>
<b>Committee Referral:</b>		<b>Effective Date:</b>
<b>Committee Action:</b>		
<b>Date Introduced:</b>	6/1/2010	
<b>Public Hearing:</b>		
<b>Council Action (1)</b>	6/1/2010 - ADOPTED	
<b>Council Votes:</b>	MB:A, WC:A, SHD:A, TD:-, CE:-, AH:A, TK:A, EO:A, IT:A	
<b>Pass/Fail:</b>	P	
<b>Remarks:</b>		

---

**AFFECTED CODE SECTIONS:**

---

**COMMITTEE REPORTS:**

---

**BACKGROUND INFORMATION/FISCAL IMPACT:**

(Includes reason for proposal, as well as any unique statutory requirements)

This resolution amends the composition of the Equine Industry Task Force established by CR-29-2010 to add two representatives of the development community and thereby increasing the membership from 13 to 15.

---

**CODE INDEX TOPICS:**

---

**INCLUSION FILES:**

---

## References

---

- *Prince George's County Strategic Program for Agricultural Development, 2009*
- *Title 17, the Public Local Laws of Prince George's County, Subtitle 30, Agriculture, Division 1 - Right to Farm.*
- *Maryland Horse Forum 2009 Final Report*
- *The Future of Agriculture in Prince George's County, 2005*
- *The Maryland-National Capital Park and Planning Commission, Prince George's County approved General Plan, 2002*
- *Prince George's County Strategic Program for Agricultural Development, 2009*
- *2002 Maryland Department of Agricultural Equine Census*
- *The Equiery,*
- *The Equestrian History of Prince George's County in Brief, Historic Preservation Section, Prince George's County/M-NCCPPC*
- *Marlborough Hunt Club website*
- *Prince George's Equestrian Center (PGEC)*
- *UMD College of Agriculture and Natural Resources*
- *Governor's Special Commission on Professional Sports and the Economy*
- *2002 Maryland Equine Census*
- *MD Department of Natural Resources*
- *US Equine Marketing Association, 1989*
- *–Saddle Up Maryland!– Directory to Rental Stables & Guided Trail Rides in Maryland presented by Equiery*
- *August 19, 2010 Prince George's County Equine Industry Task Force Public Forum*

Photos Courtesy of:  
Prince George's County Equine Industry Task Force

**COPIES OF THIS REPORT CAN BE OBTAINED FROM:**

Planning, Zoning & Economic Development (PZED) Committee  
Prince George County Council  
14741 Governor Oden Bowie Drive  
Upper Marlboro, Maryland 20772  
301-952-4199

<http://www.princegeorgescountymd.gov/government/legislativebranch/workgroups/index.asp>



**The Prince George's County Council  
Planning, Zoning & Economic Development Committee  
September 2010**