

**COUNTY COUNCIL OF PRINCE GEORGE'S COUNTY, MARYLAND**

**2012 Legislative Session**

Resolution No. CR-71-2012

Proposed by The Chair (by request – County Executive)

Introduced by Council Member Harrison

Co-Sponsors \_\_\_\_\_

Date of Introduction October 2, 2012

**RESOLUTION**

1 A RESOLUTION concerning

2           The 2008 Water and Sewer Plan (April 2012 Cycle of Amendments)

3 For the purpose of changing the water and sewer category designations of properties within the  
4 2008 Water and Sewer Plan.

5           WHEREAS, Title 9, Subtitle 5 of the Environment Article of the Annotated Code of  
6 Maryland requires the County to adopt a comprehensive plan dealing with water supply and  
7 sewerage systems, establishes the procedures governing the preparation and adoption of said  
8 plan, and provides for amendments and revisions thereto; and

9           WHEREAS, pursuant to said procedures, the County Executive submitted to the County  
10 Council his recommendations on water and sewer plan amendment requests within the April  
11 2012 Cycle of Amendments; and

12           WHEREAS, the County Council received testimony through an advertised public hearing  
13 on the April 2012 Cycle of Amendments; and

14           WHEREAS, the County Council notified the Washington Suburban Sanitary Commission,  
15 the Maryland-National Capital Park and Planning Commission, the State and County Health  
16 Departments, the Maryland Department of Planning and the Maryland Department of the  
17 Environment of the public hearing and provided each agency with copies of the April 2012  
18 Cycle of Amendments.

19           SECTION 1. NOW, THEREFORE BE IT RESOLVED by the County Council of Prince  
20 George's County, Maryland, that the Prince George's County 2008 Water and Sewer Plan, as  
21 adopted by CR-91-2008, and amended by CR-17-2009, CR-52-2009, CR-5-2010, CR-19-2010,  
22 CR-82-2010, CR-20-2011, CR-4-2012, CR-19-2012, and CR-27-2012 is further amended by

1 adding the water and sewer category designations as shown in Attachment A, attached hereto  
2 and made a part hereof.

3 SECTION 2. BE IT FURTHER RESOLVED that maps identified as the “Prince George’s  
4 County, Maryland, 2008 Water Map” and “Prince George’s County, Maryland, 2008 Sewer  
5 Map”, are hereby amended to incorporate the approved category changes with the property  
6 location delineated on the map in Attachment B, attached hereto and made a part hereof.

7 SECTION 3. BE IT FURTHER RESOLVED that within five working days of the adoption  
8 of this Resolution, it shall be transmitted to the County Executive by the Clerk of the Council.

9 SECTION 4. BE IT FURTHER RESOLVED that this Resolution shall take effect on the  
10 day following the first regularly scheduled Council meeting day which occurs after the County  
11 Executive transmits his comments on the Resolution, or on the day that the County Executive  
12 indicates he has no comments, or ten working days following the transmittal of this Resolution to  
13 the County Executive, whichever shall occur first. Prior to the effective date of this Resolution,  
14 the Council may reconsider its action based upon any recommendation received from the County  
15 Executive.

16 SECTION 5. BE IT FURTHER RESOLVED that upon the effective date of this  
17 Resolution, it shall be transmitted by the Clerk of the Council to the Secretary of the Maryland  
18 Department of the Environment.

Adopted this 13th day of October, 2012.

COUNTY COUNCIL OF PRINCE  
GEORGE'S COUNTY, MARYLAND

BY: \_\_\_\_\_  
Andrea C. Harrison  
Chair

ATTEST:

\_\_\_\_\_  
Redis C. Floyd  
Clerk of the Council

**WATER AND SEWER CATEGORY AMENDMENT**

<b>Sewershed Application Council District</b>	<b>Development Proposal/ Tax Map Location</b>	<b>Acreage/ Zoning</b>	<b>Current Category</b>	<b>Requested Category</b>	<b>Executive's Recommendation</b>	<b>Council Approval</b>
<b><u>Blue Plains</u></b>						
12/PW-01 Strittmatter Property District 1	Mixed residential and non-residential uses, to include approximately 100 townhouse units and 500 multi-family units; a 150-room hotel; and 15,000 square feet of retail space.  5 D-4 & 9 D-1, p/o 145 & p/o 6	39.87 M-X-T	5	4	4	4

**APPLICATIONS**

**REQUEST**

**MAP #**

**Parkway**

12/PW-01

Strittmatter Property

5 to 4

1

Strittmatter Property

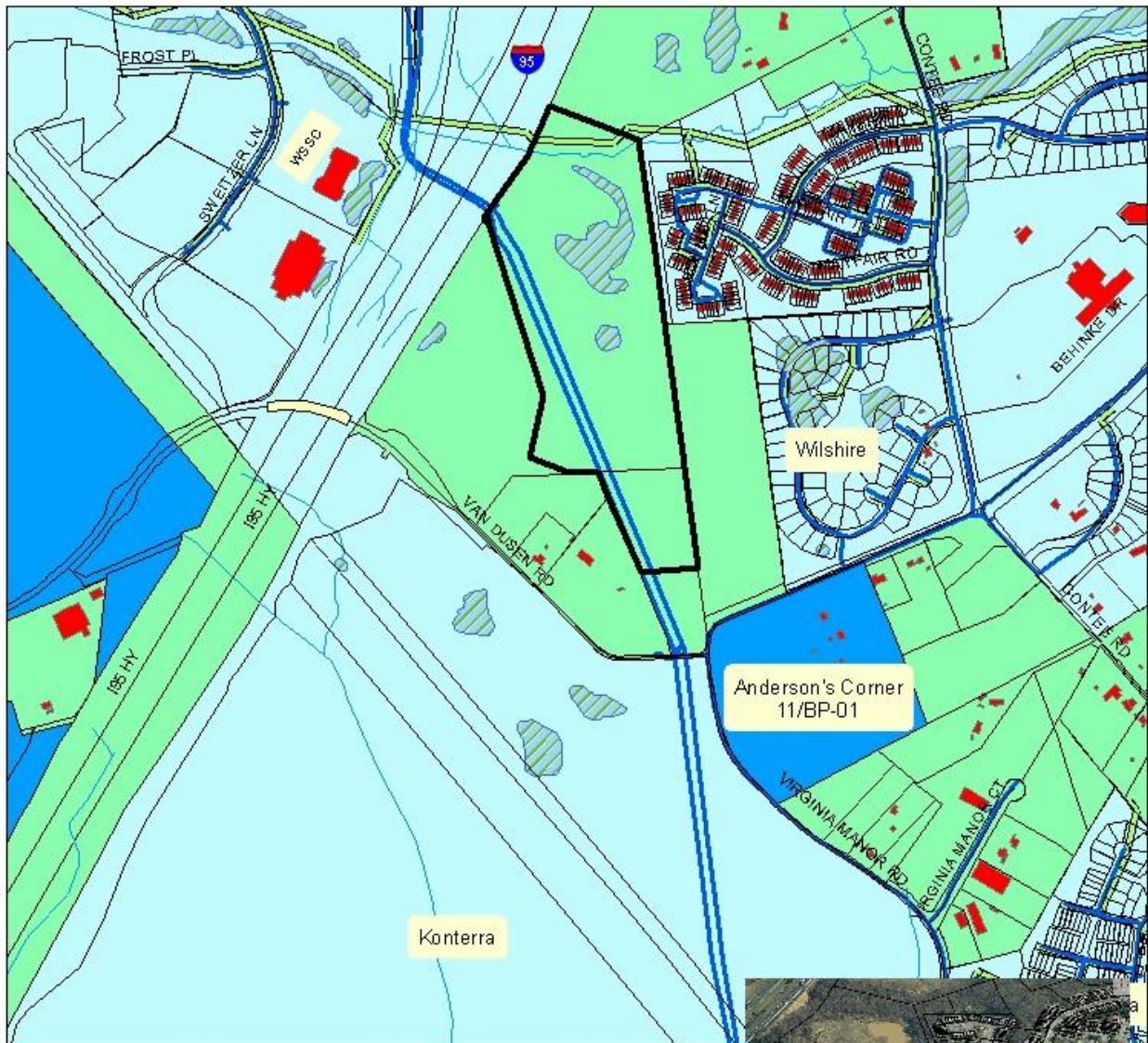
12/PW-01

Amendment Request

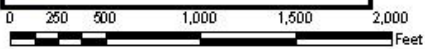
5 to 4

Water and Sewer Plan Amendments

April 2012 Application



- |                   |                |             |             |                    |
|-------------------|----------------|-------------|-------------|--------------------|
| Envelope Boundary | Streams        | Ponds       | Buildings   | Council District 1 |
| Streets           | Wetlands       | Railroad    | Schools     | Firestations       |
| Bridges           | Historic sites | Water lines | Sewer lines | Property           |
- Sewer Categories**
- 03 Community Sys. lsm
  - 04 Community Sys. lsm Adequate for Development Planning
  - 05 Future Community System
  - 06 Individual Sys. lsm
  - 06P Private, Shared or Community Sys. lsm



GIS/Urban/Map/04/2012/003