

“Health in All Policies”

Social Determinants Drive Population Health

*Joseph L. Wright, MD, MPH
Board of Health Session
April 19th, 2016*

2016 County Health Rankings

Maryland



Key Definitions: Outcomes

Health Outcomes

Health Factors

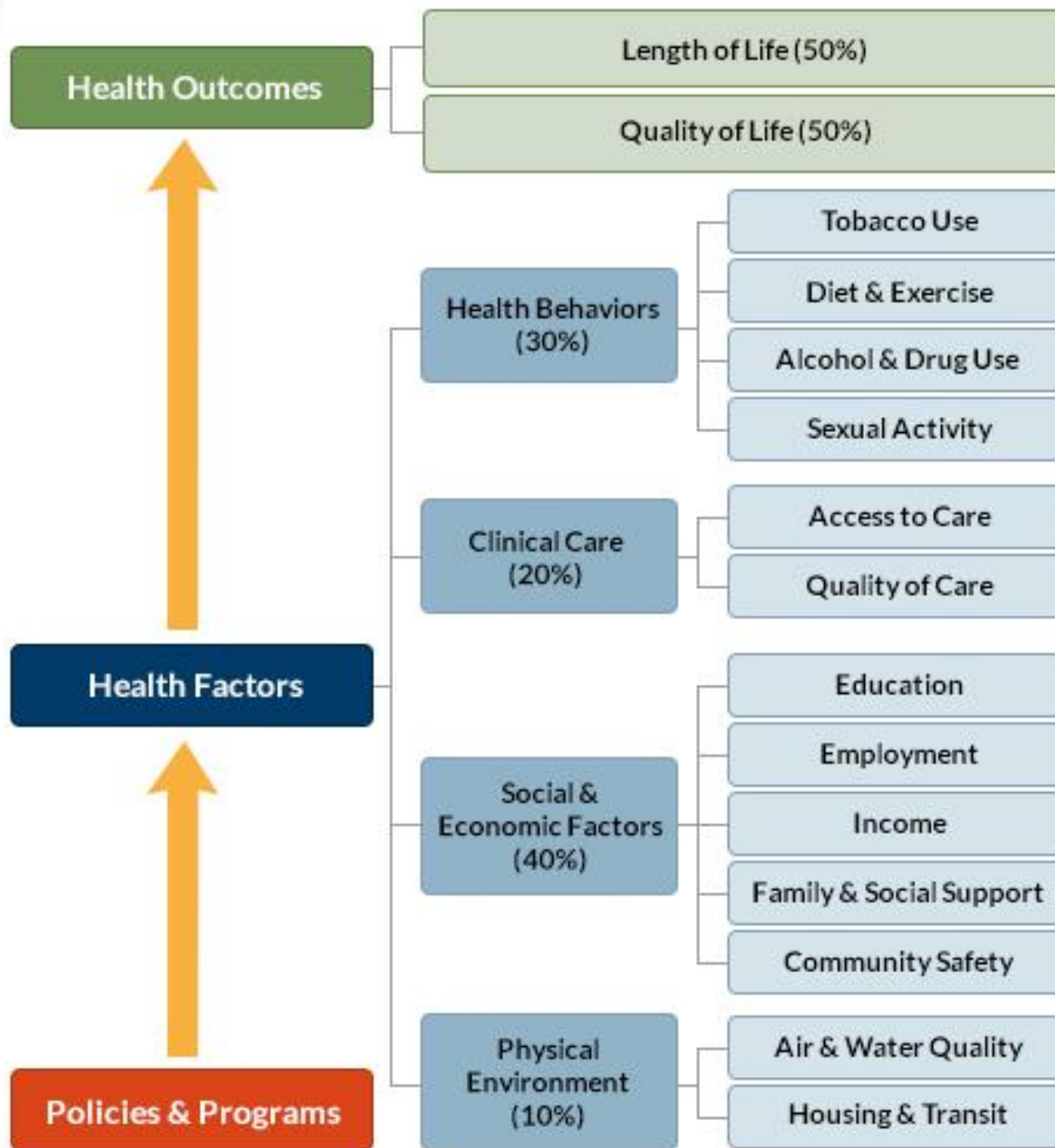
Policies and Programs

- **Health Outcomes** are defined as a change (or lack thereof) in the health status of a population which can be attributed to select **factors** or interventions

Key Definitions: Factors



- **Health factors** are the economic and social conditions that influence differences in outcomes.
- Four (4) categories of health factors are:
 - Behavioral
 - Clinical Care
 - Social & Economic
 - Environmental

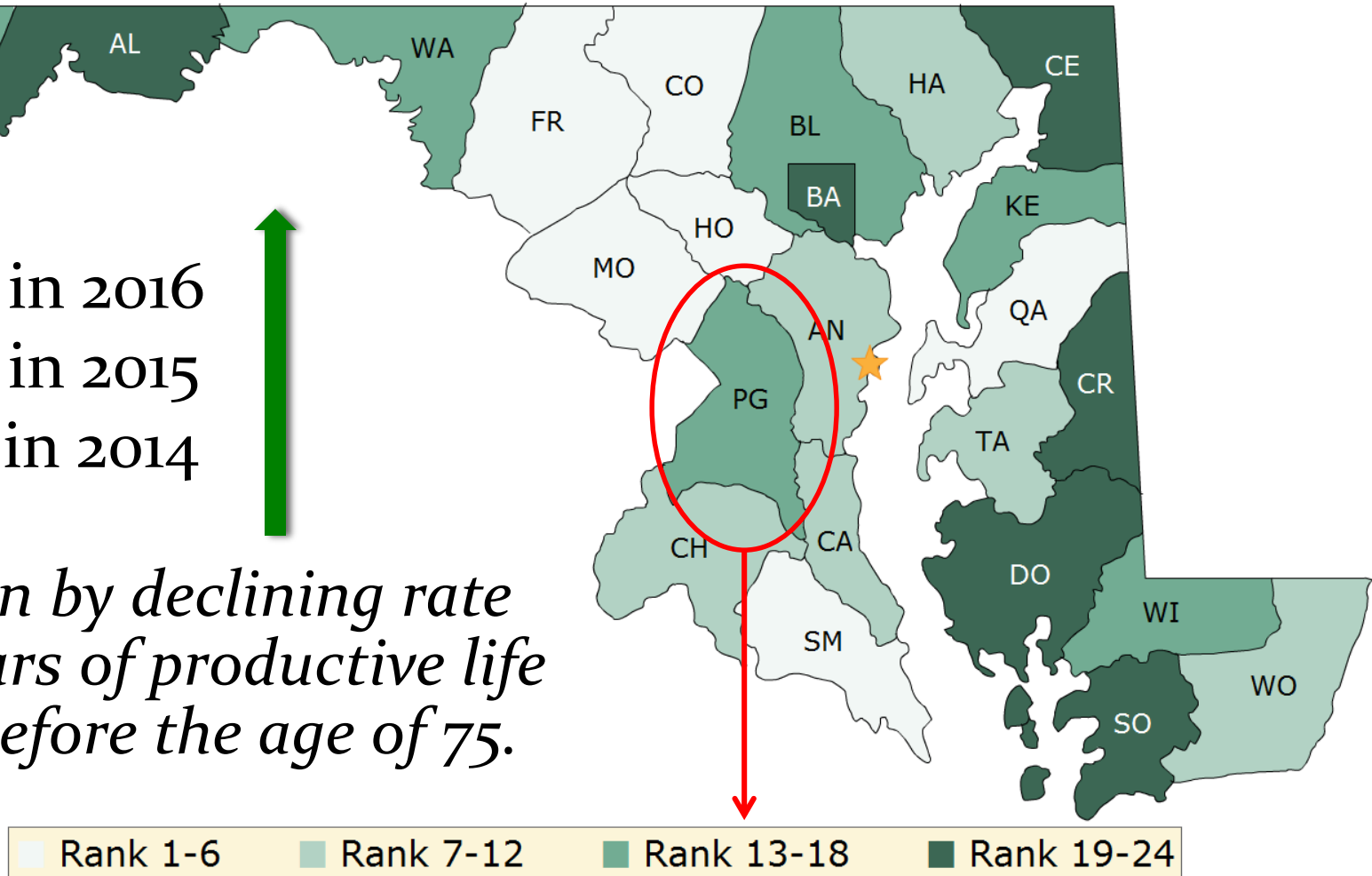


Maryland Health Outcome Rankings: Prince George's County - 2016

- #16 in 2016
- #16 in 2015
- #17 in 2014



*Driven by declining rate
in years of productive life
lost before the age of 75.*



Inside the Numbers: Increasing Life Expectancy, 2007-2013

LIFE EXPECTANCY RATE

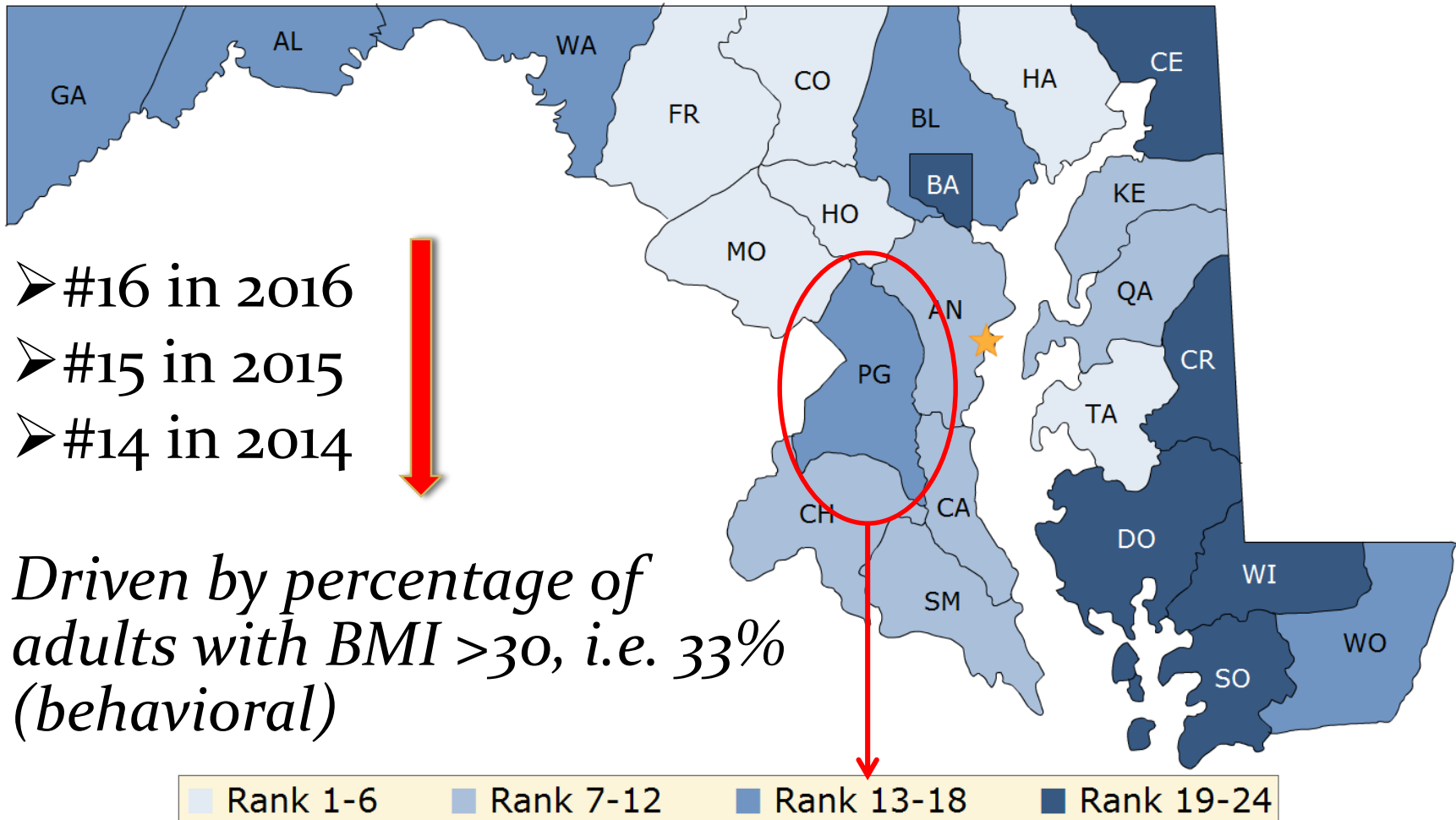
Year	Maryland	Prince George's	Montgomery	Baltimore City	U.S.A.
2007	78.1	77.5	83.1	72.0	77.7
2008	78.4	77.5	83.8	72.9	
2009	78.6	77.8	83.6	73.3	
2010	79.3	78.6	83.7	73.5	78.7
2011	79.5	79.2	84.1	73.9	
2012	79.5	79.2	84.1	73.9	
2013	79.6	79.6	84.3	73.9	78.8

2.1 yrs

Source: Maryland Vital Statistics (A division of the State Department of Health and Mental Hygiene)


* U.S. Figures are from the Center for Disease Control and Prevention

Maryland Health Factors Rankings: Prince George's County - 2016



Prince George's County Health Factors: Overall Annual Trend, 2011-2016

Report Year	Health Factors Rank
2016	16
2015	15
2014	14
2013	17
2012	17
2011	18



The table shows a general upward trend in health factors rank from 2011 to 2016. The ranks for 2011, 2012, and 2013 are 18, 17, and 17 respectively. The ranks for 2014, 2015, and 2016 are 14, 15, and 16 respectively. A red oval highlights the ranks for 2014, 2015, and 2016, and a green arrow points upwards from the 2011 rank of 18 to the 2016 rank of 16.

Source: CountyHealthRankings.org/Maryland

Inside the Numbers: Prince George's Contributory Health Factor Trends – 2016

Trending Positive

- Uninsured
- Diabetic Monitoring
- Mammography
- Violent Crime
- Air Pollution
- Preventable Hospitalizations
- *Physical Inactivity (new)*

Trending Negative

- Unemployment
- Children in Poverty
- Sexually Transmitted Infections



Inside the Numbers: Areas of Strength

- **Social & Economic**

(#17/24)

- College educated
- Children in poverty
- Income inequality
- Injury deaths

- **Clinical Care**

(#23/24)

- Preventable hospitalizations

- **Health Behaviors**

(#11/24)

- Physical inactivity
- Access to exercise
- Excessive drinking

- **Physical Environment**


(#8/24)

- Driving alone to work
- Drinking water violations

Quality-of-Life in Prince Georges: Bottom Line...

- Epidemiologic unique constellation of contributing factors
- Confluence of major population-based trends across multiple domains
- Unprecedented statistical movement of index QOL metrics, e.g., life expectancy

Health in All Policies: “A Hospital Alone Will Not A Healthier Community Make”



PRINCE GEORGE'S COUNTY
Primary Healthcare Strategic Plan

Our Health Matters!
Access
Quality
Customer Service
Health Promotion

