

ITEM:

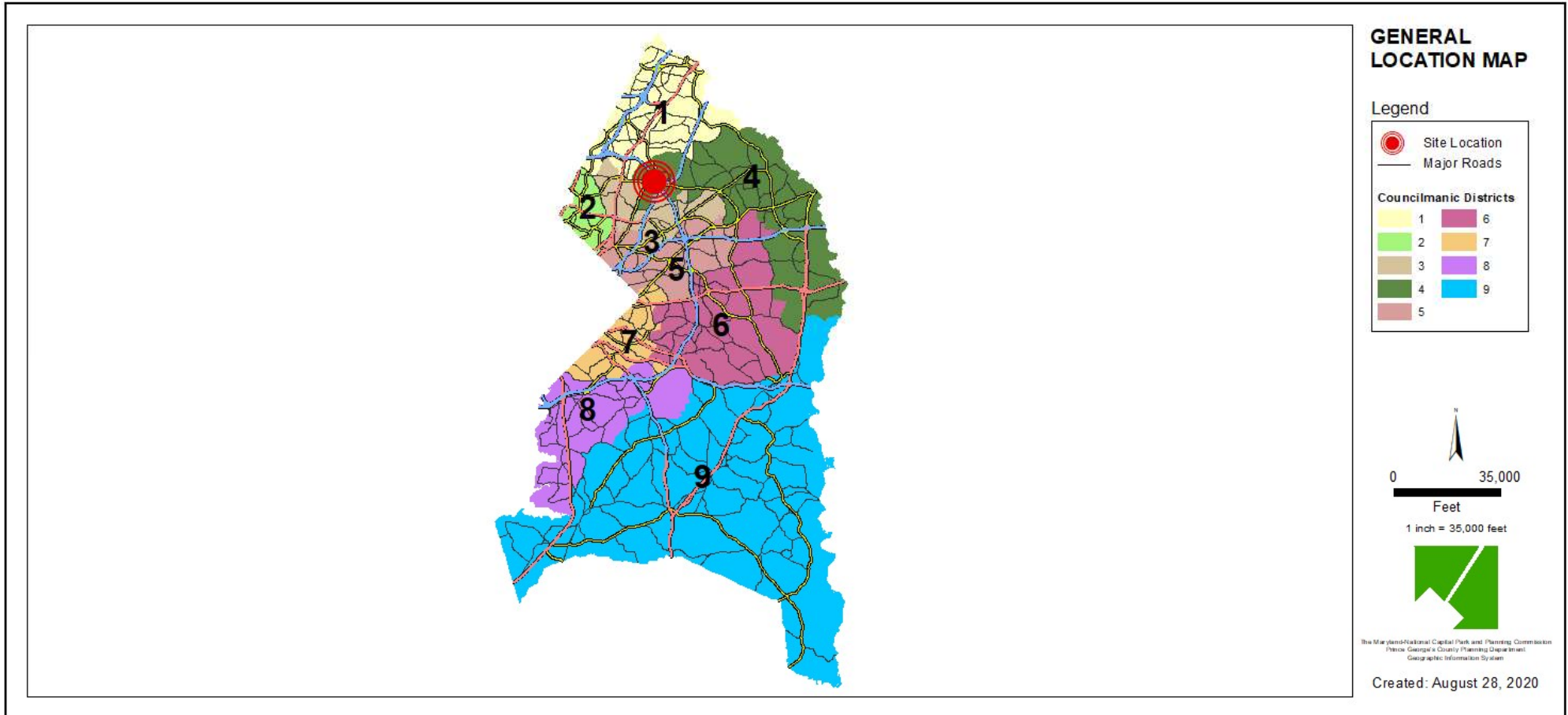
CASE: DSP-19045

# ROYAL FARMS GREENBELT

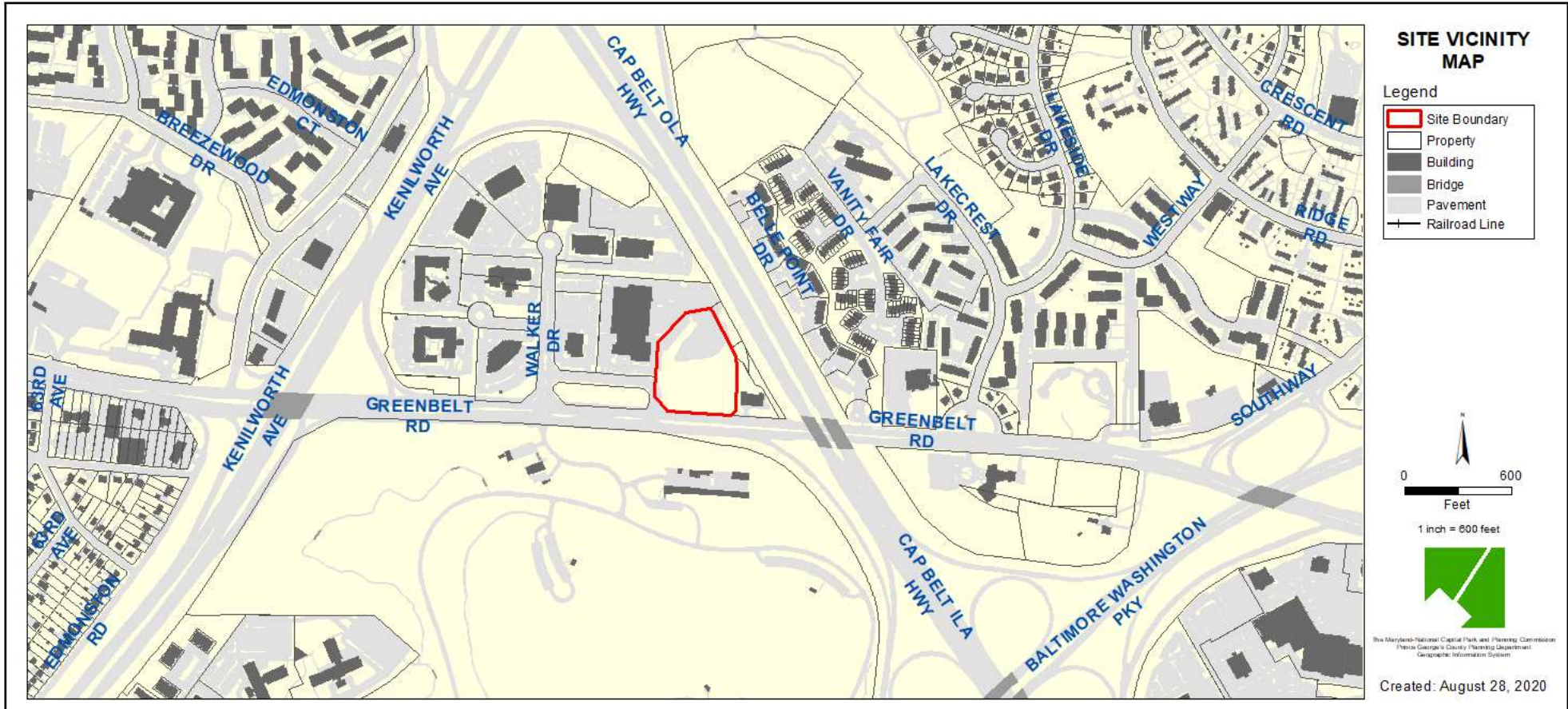
THE PRINCE GEORGE'S COUNTY PLANNING DEPARTMENT



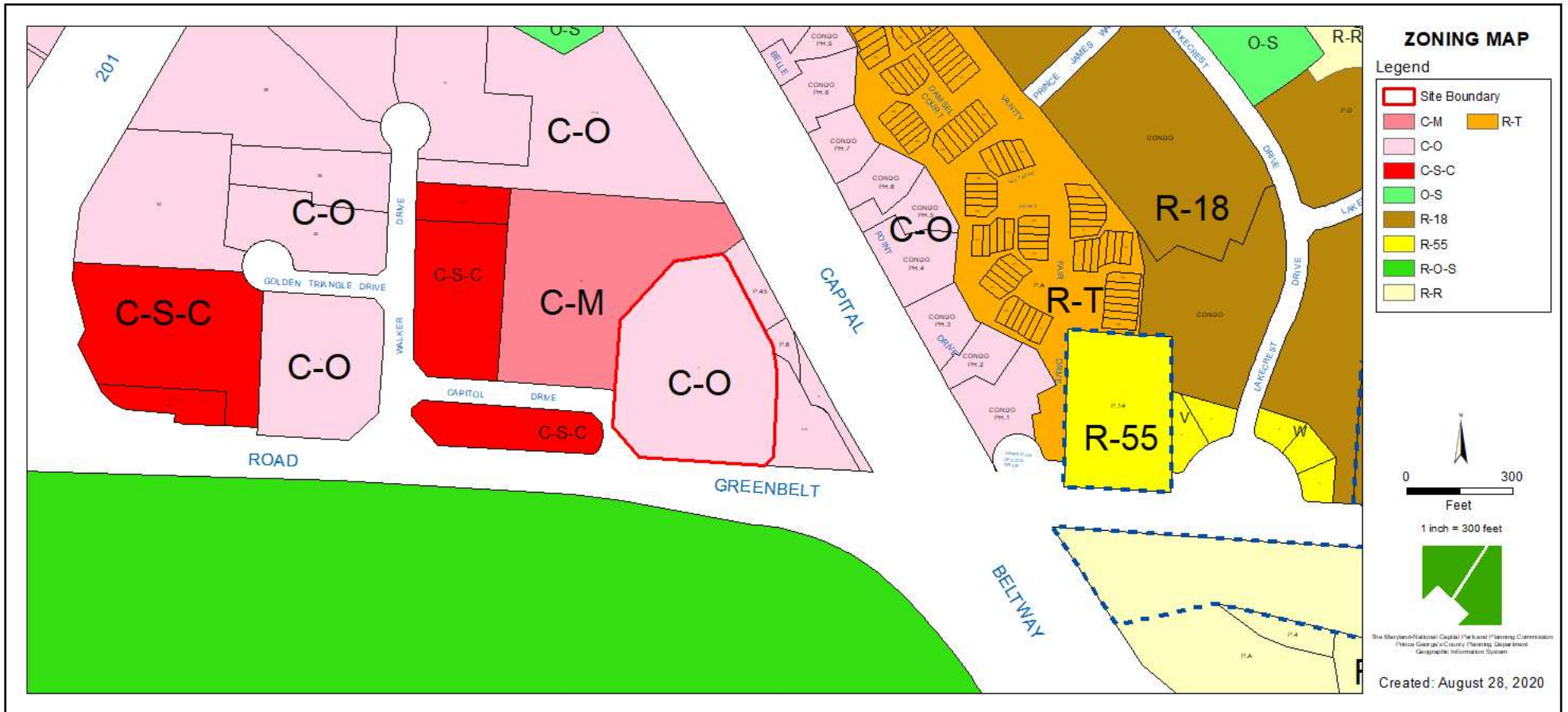
# GENERAL LOCATION MAP



# SITE VICINITY

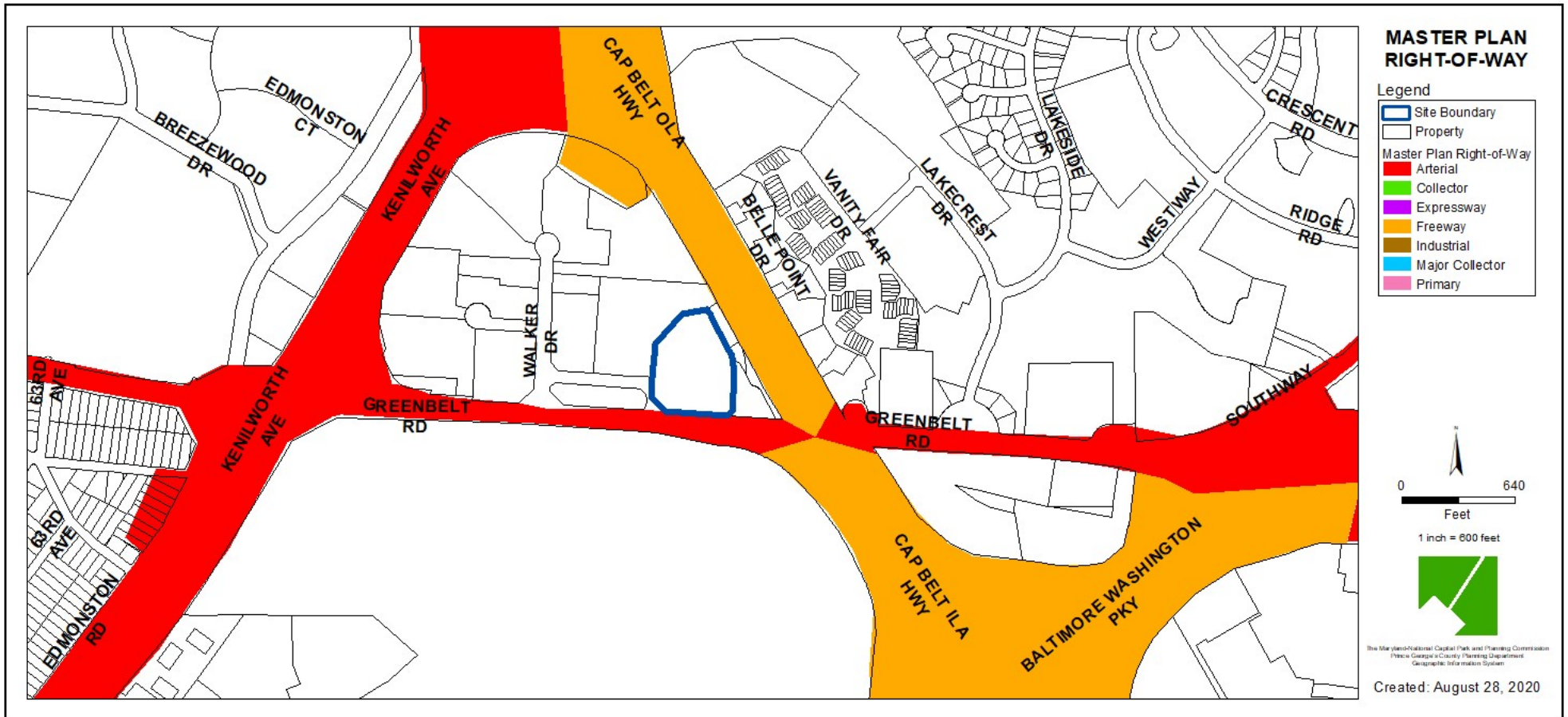


# ZONING MAP





# MASTER PLAN RIGHT-OF-WAY MAP

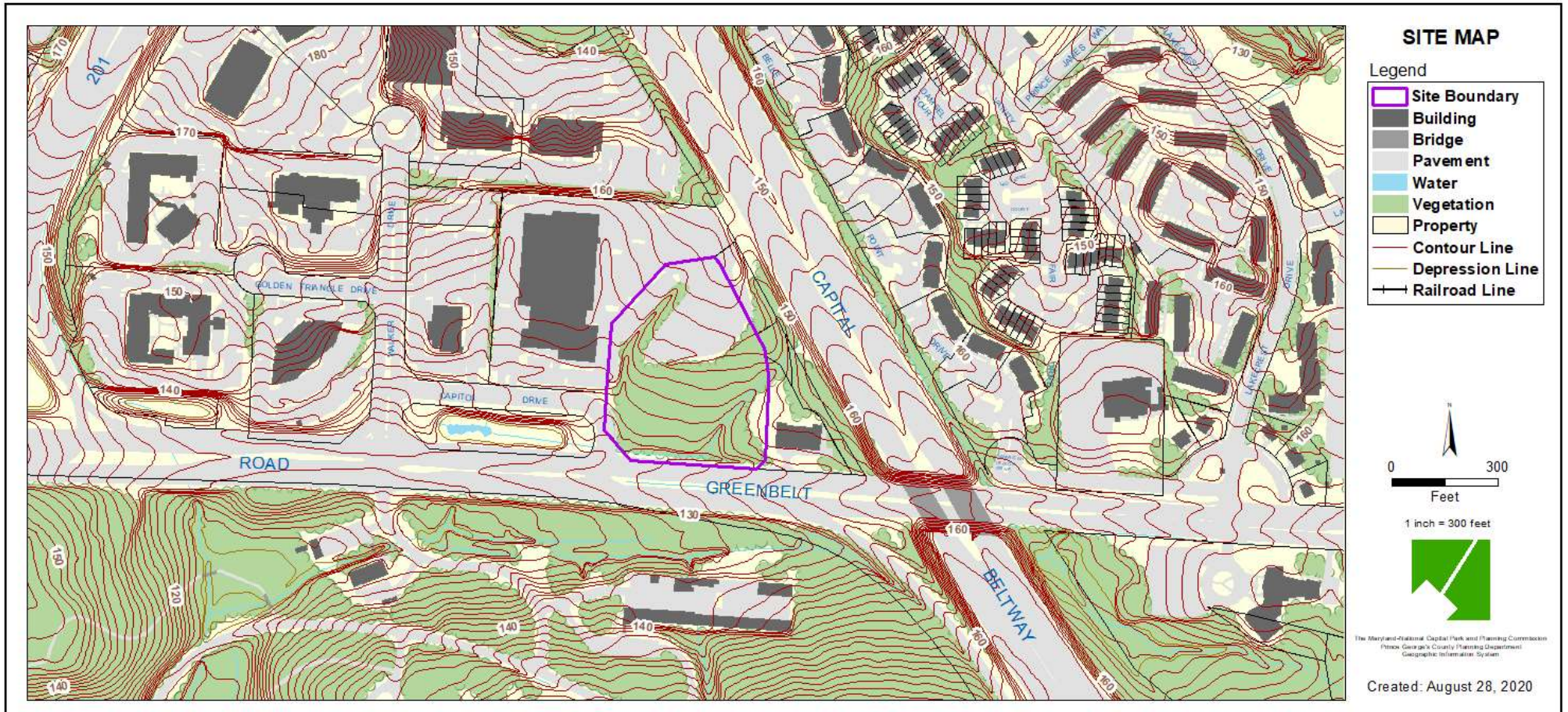


# AERIAL MAP





# SITE MAP





# BIRD'S-EYE VIEW WITH APPROXIMATE SITE BOUNDARY OUTLINED

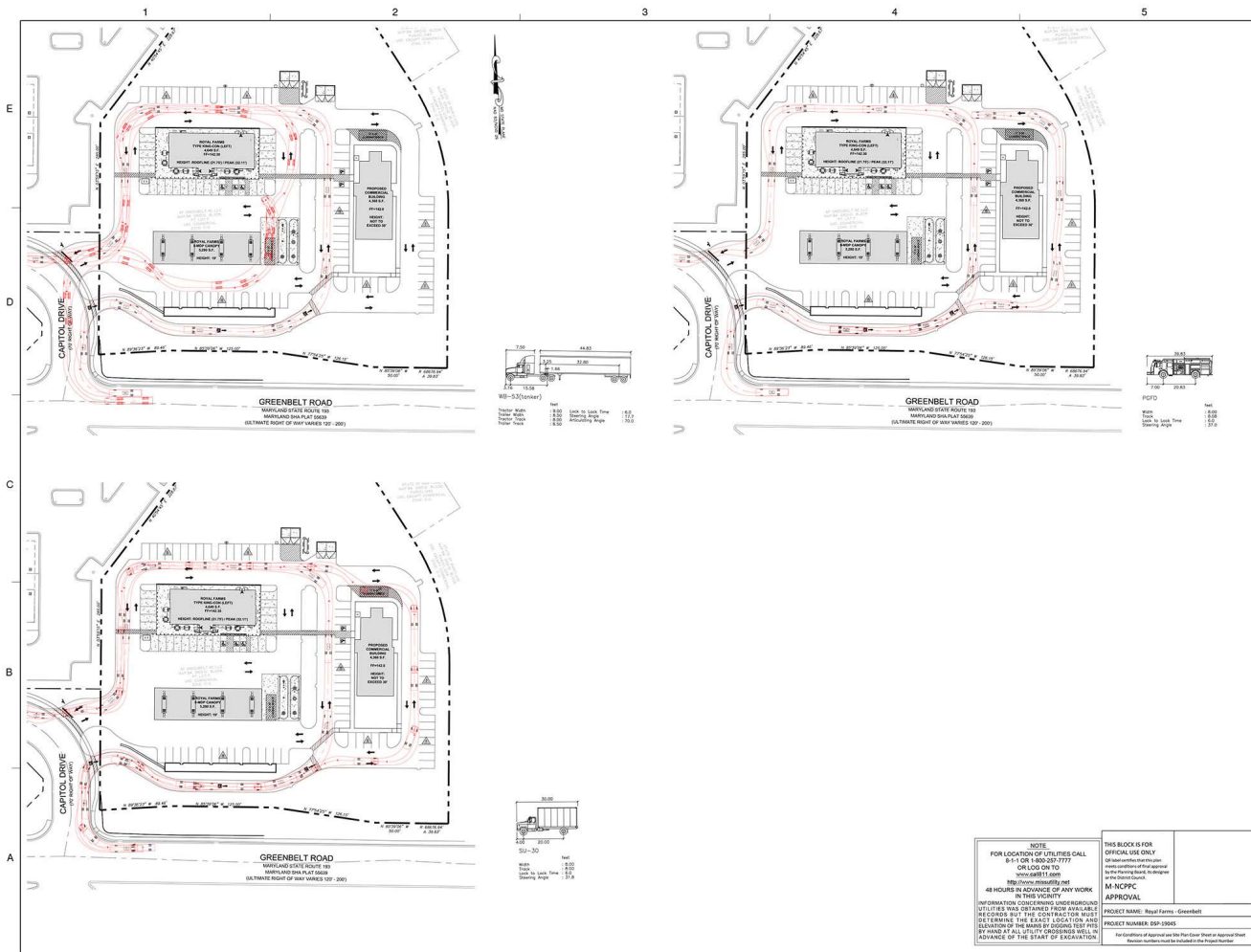




# ILLUSTRATIVE SITE PLAN



# TRUCK TURNING EXHIBIT



Dewberry Engineers Inc.  
4815 FOREST BOLLINGER, SUITE 300  
LANSHAM, MD 20756  
PHONE: 301.284.1879  
CONTACT: MATTHEW SANDER

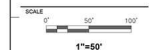
DEVELOPER/APPLICANT

RF GREENBELT RE LLC  
616 ALINE SCOTT WOOD  
117 W PATRICK STREET, STE 200  
FREDERICK, MD 21701  
CONTACT: ED SCOTT

ROYAL FARMS - GREENBELT  
FORMERLY CAPITOL CADILLAC  
PRINCE GEORGES COUNTY  
GREENBELT, MARYLAND 20770  
MAP BOOK: 0000.0001 LOT: PART OF LOT 7

SEAL

KEY PLAN



No.	DATE	BY	DESCRIPTION

REVISIONS

DRAWN BY: RW / DRW  
APPROVED BY: EJC  
CHECKED BY: DRW  
DATE: JUNE 2019

TITLE

DSP-19045  
ALTO TURN EXHIBIT

PROJECT NO: 5014014

1

SHEET NO. 1 OF 1

**NOTE:**  
FOR LOCATION OF UTILITIES CALL  
811 OR 1-800-487-7777  
OR LOG ON TO  
www.811.org  
@811.org

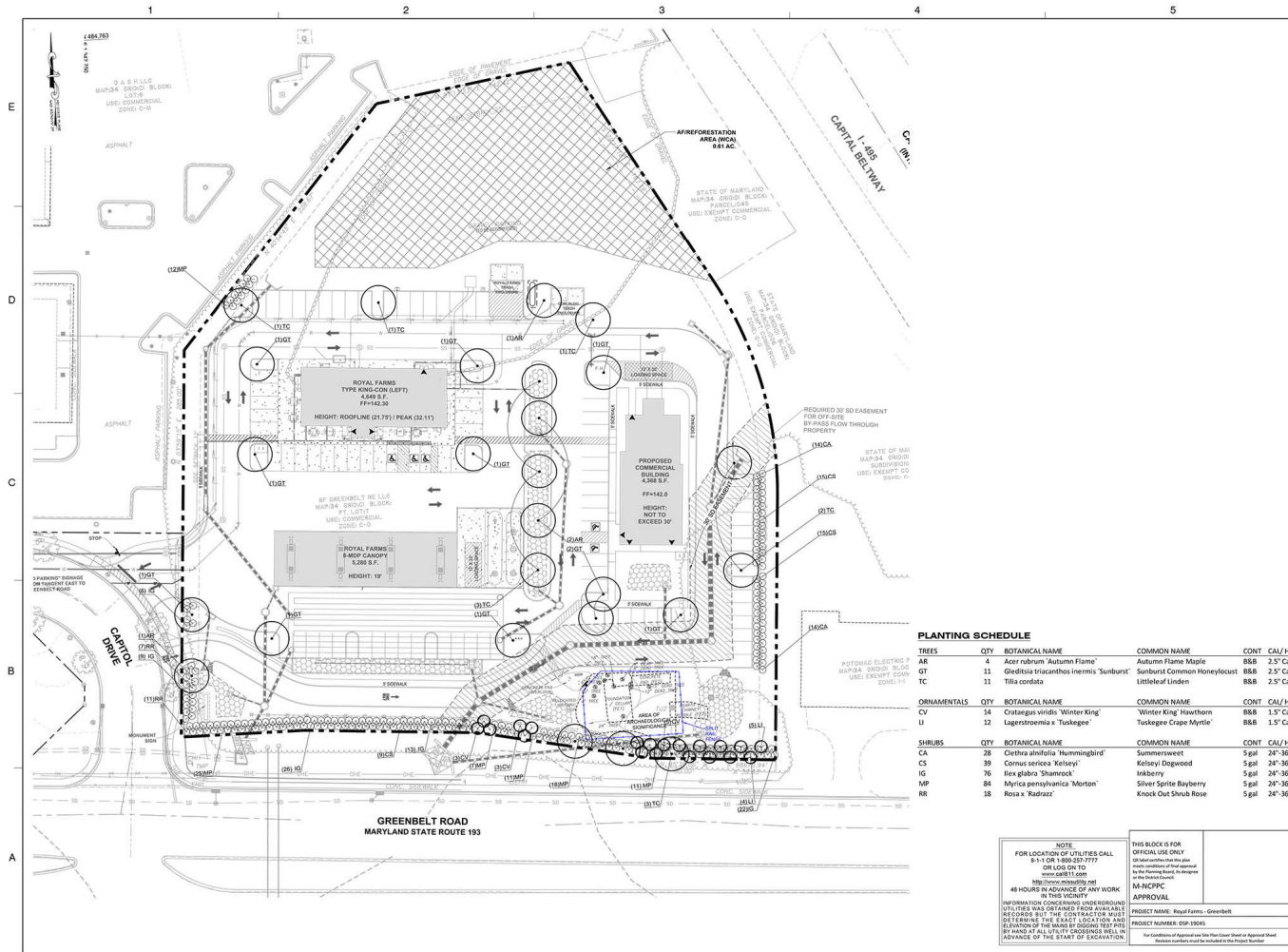
**IN THIS JURISDICTION:**  
INFORMATION CHECKING UNDERGROUND  
UTILITIES HAS OBTAINED FROM PUBLIC  
RECORDS, BUT THE CONTRACTOR MUST  
DETERMINE THE EXACT LOCATION AND  
DEPTH OF THE UTILITIES BY USING THE  
BY HAND AT ALL UTILITIES GREENBELT WILL  
ADVANCE OF THE START OF EXCAVATION.

**THIS BLOCK IS FOR  
OFFICIAL USE ONLY.**  
All modifications to this block  
must be approved by the  
Professional Engineer  
M-NCPC  
APPROVAL  
PROJECT NAME: Royal Farms - Greenbelt  
PROJECT NUMBER: DSP-19045  
For Conditions of Approval see the Plan Cover Sheet or Approval Sheet  
Revision numbers must be included in the Project Number





# LANDSCAPE PLAN



Dewberry Engineers Inc.  
481 FOREST BOWLING, SUITE 300  
LANHAM, MD 20706  
PHONE: 301.584.8879  
CONTACT: MATTHEW SANDER

DEVELOPER/APPLICANT

RF GREENBELT RE LLC  
216 KLINE SCOTT VMSCO  
117 W PATRICK STREET, STE 200  
FREDERICK, MD 21701  
CONTACT: ED SCOTT

ROYAL FARMS - GREENBELT  
FORMERLY CAPITOL CADILLAC  
PRINCE GEORGE'S COUNTY  
GREENBELT, MARYLAND 20770

MAP 0004 0000 0000 LOT PART OF LOT 7

KEY PLAN  
SCALE: 0' 30' 60'  
1"=30'

No.	DATE	BY	Description
REVISIONS			

DRAWN BY: RW / GRW  
APPROVED BY: JMS  
CHECKED BY: GMS  
DATE: JUNE 2018

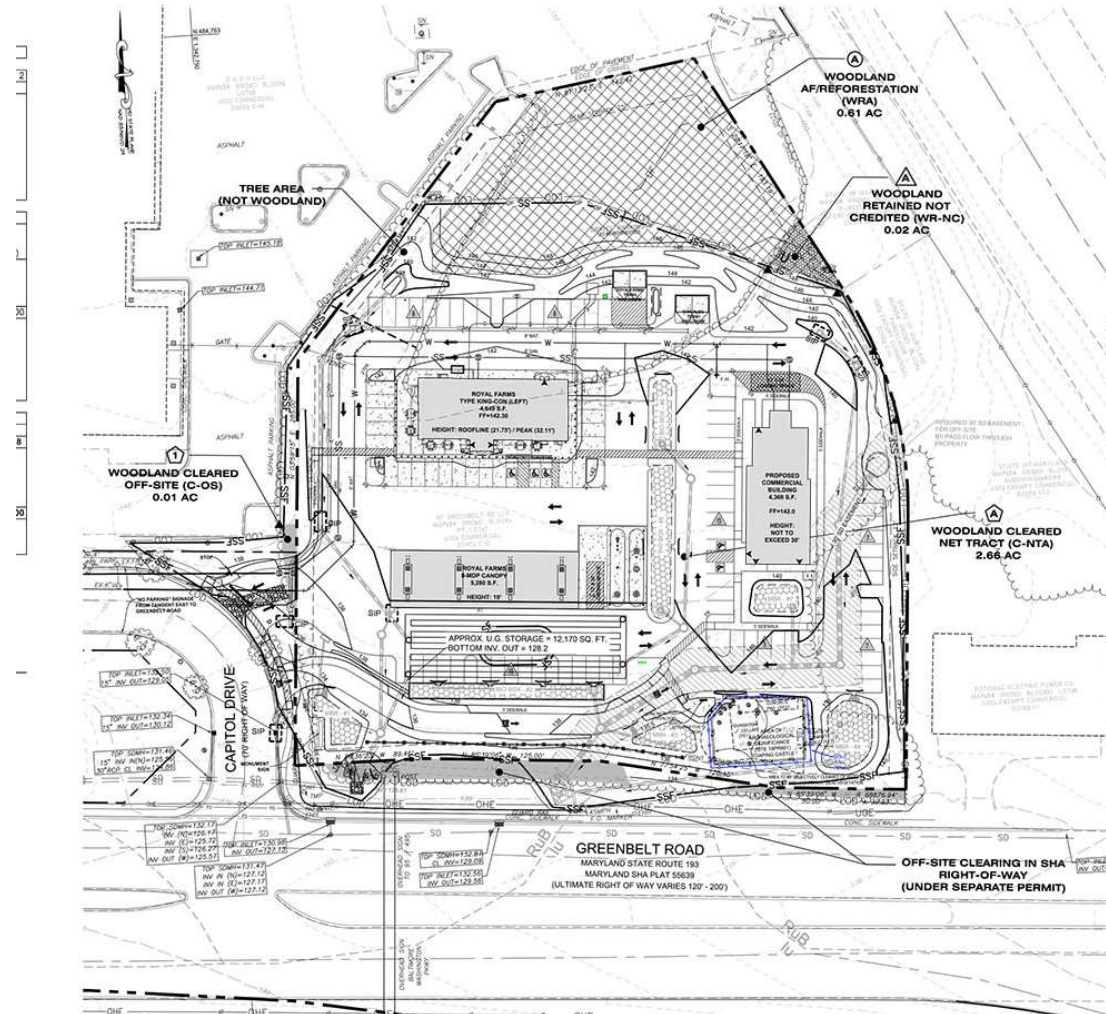
TITLE  
DSP-19045  
LANDSCAPE PLAN

PROJECT NO: 50114074

6  
SHEET NO. 6 OF 14

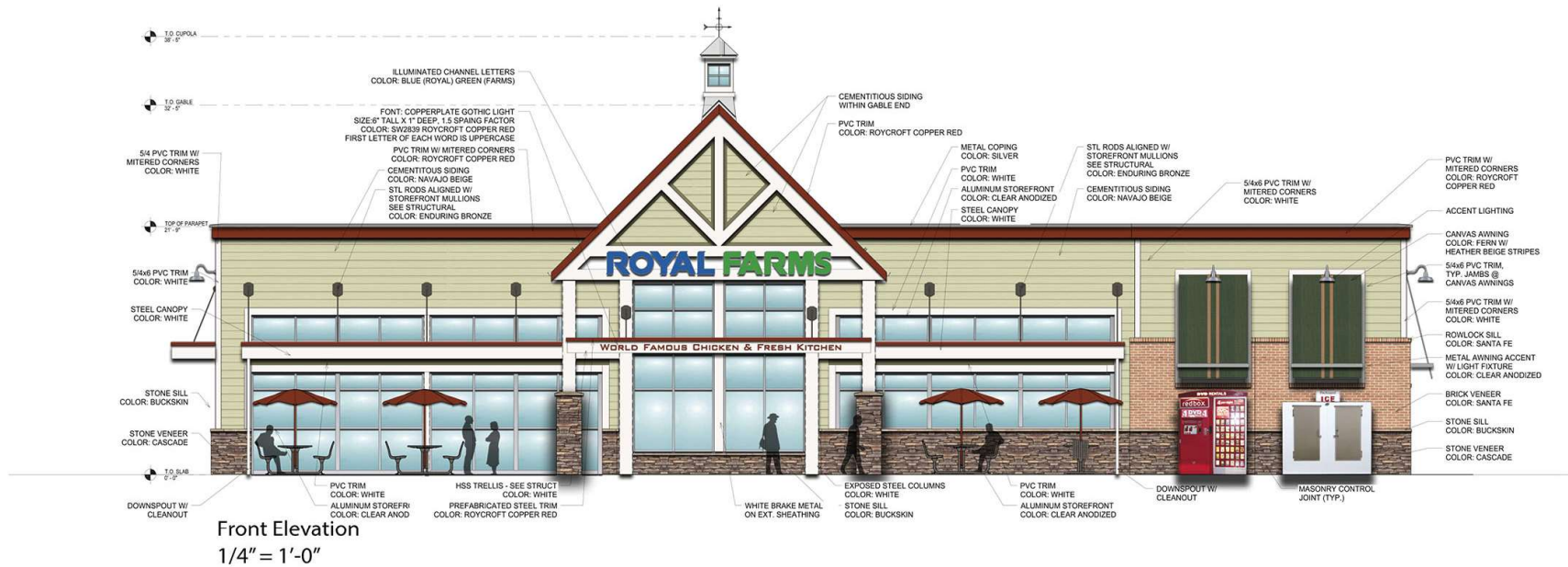


# TYPE II TREE CONSERVATION PLAN





# FOOD AND BEVERAGE STORE - FRONT ELEVATION



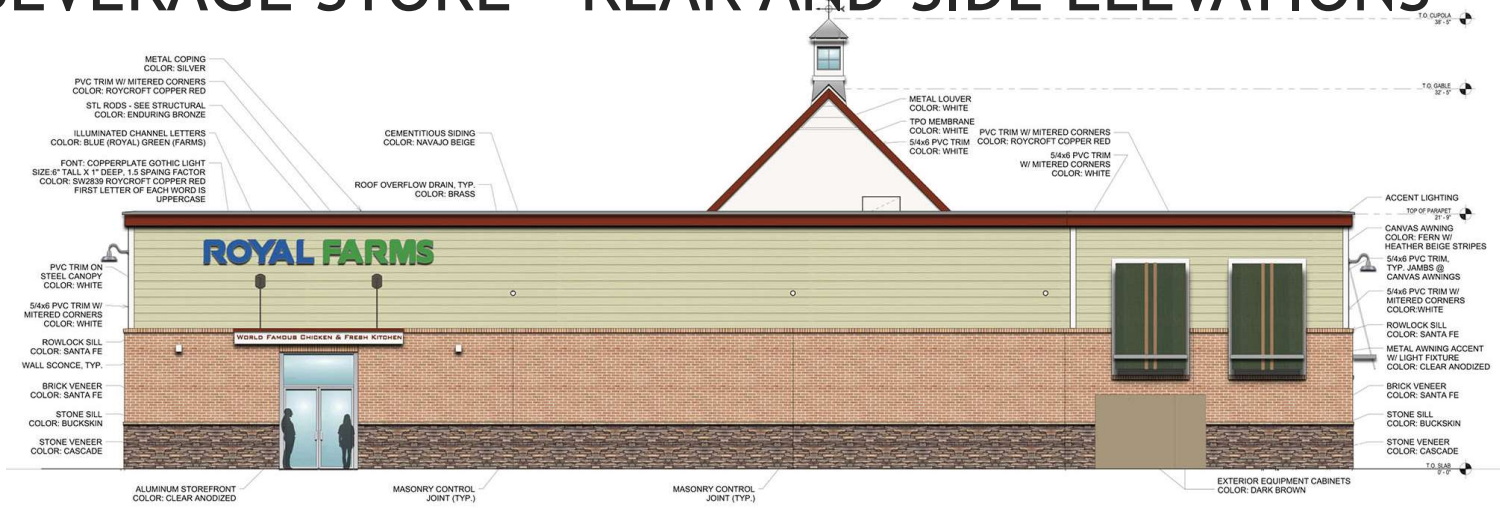
## ROYAL FARMS

Royal Farms #213  
Greenbelt Road & Capitol Drive, Greenbelt MD  
Proposed Elevations  
July 12th, 2019

**RA** RATCLIFFE  
ARCHITECTS  
10404 Stevenson Road • Stevenson, Maryland 21153  
Phone 410-484-7010 • Fax 410-484-3819 • [peter@ratcliffearchitects.com](mailto:peter@ratcliffearchitects.com)



# FOOD AND BEVERAGE STORE - REAR AND SIDE ELEVATIONS



Rear Elevation  
1/4" = 1'-0"



Right Elevation  
1/4" = 1'-0"

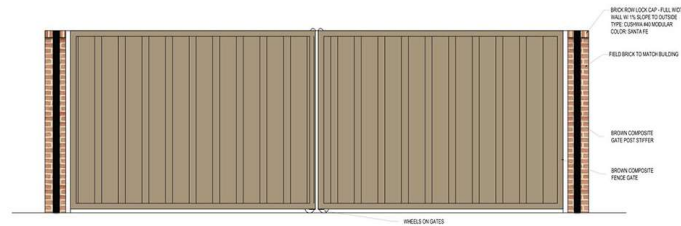
Left Elevation  
1/4" = 1'-0"

DC date: 3/22/2021

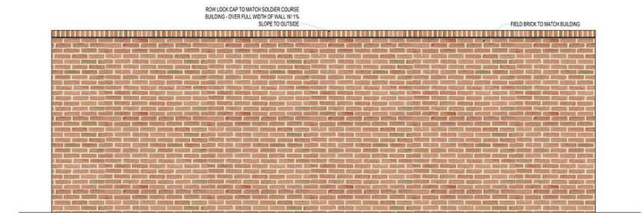




# FOOD AND BEVERAGE STORE - DUMPSTER & GAS STATION CANOPY



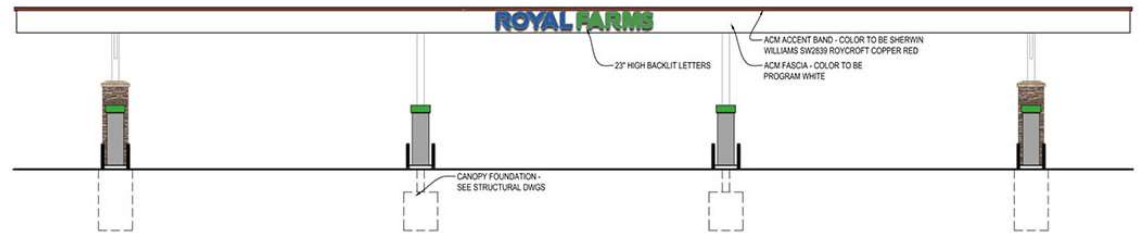
Dumpster Enclosure - Front Elevation  
1/2" = 1'-0"



Dumpster Enclosure - Rear Elevation  
1/2" = 1'-0"



Fuel Canopy - Side Elevation  
1/8" = 1'-0"



Fuel Canopy - Front Elevation  
1/8" = 1'-0"

# COMMERCIAL BUILDING ELEVATIONS





