

COUNTY COUNCIL OF PRINCE GEORGE'S COUNTY, MARYLAND
2017 Legislative Session

Resolution No. CR-58-2017

Proposed by The Chairman (by request – County Executive)

Introduced by Council Members Turner, Davis, Taveras and Patterson

Co-Sponsors _____

Date of Introduction July 18, 2017

RESOLUTION

1 A RESOLUTION concerning

2 The 2008 Water and Sewer Plan (April 2017 Cycle of Amendments)

3 For the purpose of changing the water and sewer category designations of properties within the
4 2008 Water and Sewer Plan.

5 WHEREAS, Title 9, Subtitle 5 of the Environment Article of the Annotated Code of
6 Maryland requires the County to adopt a comprehensive plan dealing with water supply and
7 sewerage systems, sets forth the procedures governing the preparation and adoption of the
8 comprehensive plan, and provides for amendments and revisions thereto; and

9 WHEREAS, the County Executive submitted to the County Council his recommendations
10 on water and sewer plan amendment requests within the April 2017 Cycle of Amendments in
11 accordance with the procedures set forth in Title 9, Subtitle 5 of the Environment Article of the
12 Annotated Code of Maryland; and

13 WHEREAS, the County Council received testimony through an advertised public hearing
14 on the April 2017 Cycle of Amendments; and

15 WHEREAS, the County Council notified the Washington Suburban Sanitary Commission,
16 the Maryland-National Capital Park and Planning Commission, the State and County health
17 departments, the Maryland Department of Planning and the Maryland Department of the
18 Environment of the public hearing and provided each agency with copies of the April 2017
19 Cycle of Amendments.

20 SECTION 1. NOW, THEREFORE, BE IT RESOLVED by the County Council of Prince
21 George's County, Maryland, that the Prince George's County 2008 Water and Sewer Plan, as
22 adopted by CR-91-2008, and amended by CR-17-2009, CR-52-2009, CR-5-2010, CR-19-2010,

1 CR-82-2010, CR-20-2011, CR-4-2012, CR-19-2012, CR-27-2012, CR-71-2012, CR-20-2013,
2 CR-50-2013, CR-92-2013, CR-11-2014, CR-57-2014, CR-16-2015, CR-45-2015, CR-43-2016,
3 CR-62-2016 and CR-23-2017 is further amended by adding the water and sewer category
4 designations as shown in Attachment A, attached hereto and made a part hereof.

5 SECTION 2. BE IT FURTHER RESOLVED that maps identified as the “Prince George’s
6 County, Maryland, 2008 Water Map” and “Prince George’s County, Maryland, 2008 Sewer
7 Map”, are hereby amended to incorporate the approved category changes with the property
8 location delineated on the map in Attachment B, attached hereto and made a part hereof.

9 SECTION 3. BE IT FURTHER RESOLVED that within five working days of the adoption
10 of this Resolution, it shall be transmitted to the County Executive by the Clerk of the Council.

11 SECTION 4. BE IT FURTHER RESOLVED that this Resolution shall take effect on the
12 day following the first regularly scheduled Council meeting day which occurs after the County
13 Executive transmits his comments on the Resolution, or on the day that the County Executive
14 indicates he has no comments, or ten working days following the transmittal of this Resolution to
15 the County Executive, whichever shall occur first. Prior to the effective date of this Resolution,
16 the Council may reconsider its action based upon any recommendation received from the County
17 Executive.

18 SECTION 5. BE IT FURTHER RESOLVED that upon the effective date of this
19 Resolution, it shall be transmitted by the Clerk of the Council to the Secretary of the Maryland
20 Department of the Environment.

Adopted this 26th day of September , 2017.

COUNTY COUNCIL OF PRINCE
GEORGE'S COUNTY, MARYLAND

BY: _____
Derrick Leon Davis
Chairman

ATTEST:

Redis C. Floyd
Clerk of the Council

WATER AND SEWER CATEGORY AMENDMENT

Sewershed Application Council District	Development Proposal/ Tax Map Location	Acreage/ Zoning	Current Category	Requested Category	Executive's Recommendation	Council Approval
<u>Blue Plains</u>						
17/BP-01 K Company Property District 1	A 20,050 SF recycling facility and associated office space. 4 F-3; Part of Parcel C	1.45 I-2	5	4	4	4
17/BP-02 Corridor Office Park District 1	An existing office building incorporating part of a parcel. 12 E-2; Part of Parcel 26	.8436 M-X-T	S5	S3	S3	S3
<u>Western Branch</u>						
17/W-01 Wood Property District 6	114 townhouses, and a 4-story hotel consisting of 128 rooms. 90 C-2/3; Parcels 119 & 136	17.20 M-X-T	5	4	4	4
<u>Piscataway</u>						
17/P-01 Moores Corner District 9	45 – 55 townhouses and 15,000 – 25,000 SF for commercial retail space. 134 F-4; Parcel 103	8.27 R-R	5	4	4	4

APPLICATIONS

REQUEST

MAP #

Blue Plains

17/BP-01 K Company Property
17/BP-02 Corridor Office Park

5 to 4 1
S5 to S3 2

Western Branch

17/W-01 Wood Property

5 to 4 3

Piscataway

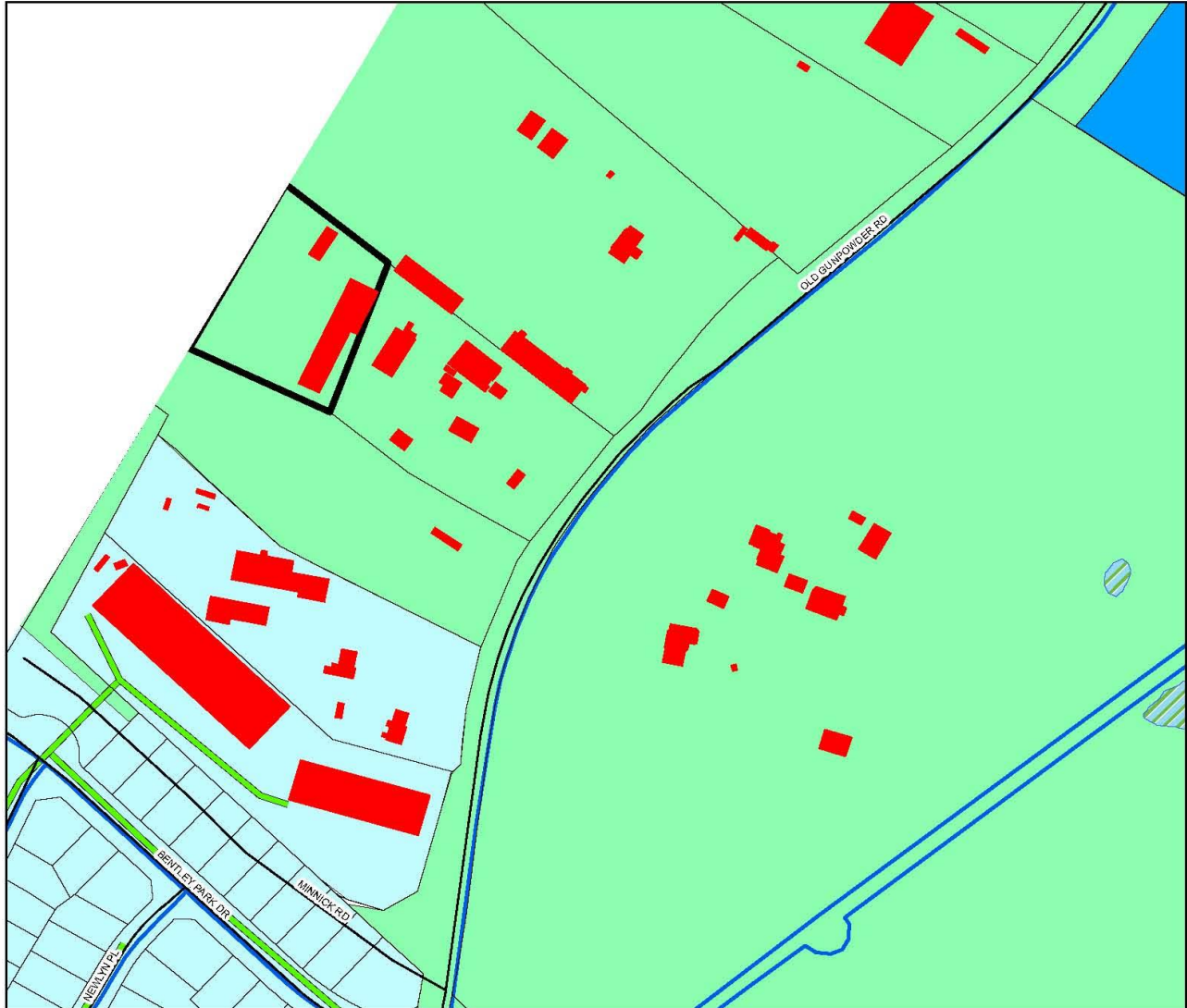
17/P-01 Moores Corner

5 to 4 4

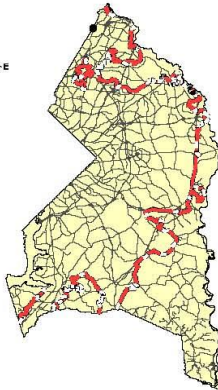
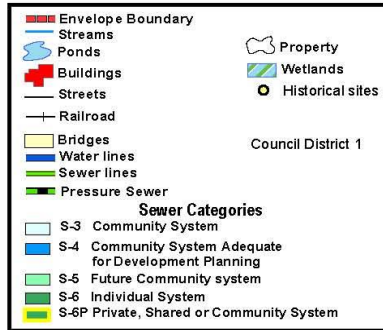


K Company Property

April 2017 Cycle
Application : 17/BP-01



Department of the Environment
Sustainable Initiatives Division
Program Support Section
W:\Shelton\LA_CycleMaps2017





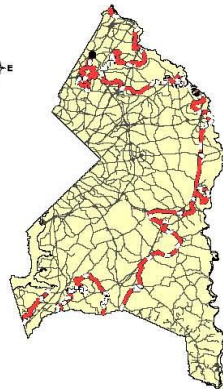
Corridor Office Park

April 2017 Cycle
Application : 17/BP-02



Department of the Environment
Sustainable Initiatives Division
Program Support Section
W:\Shellon\LA_CycleMaps2017

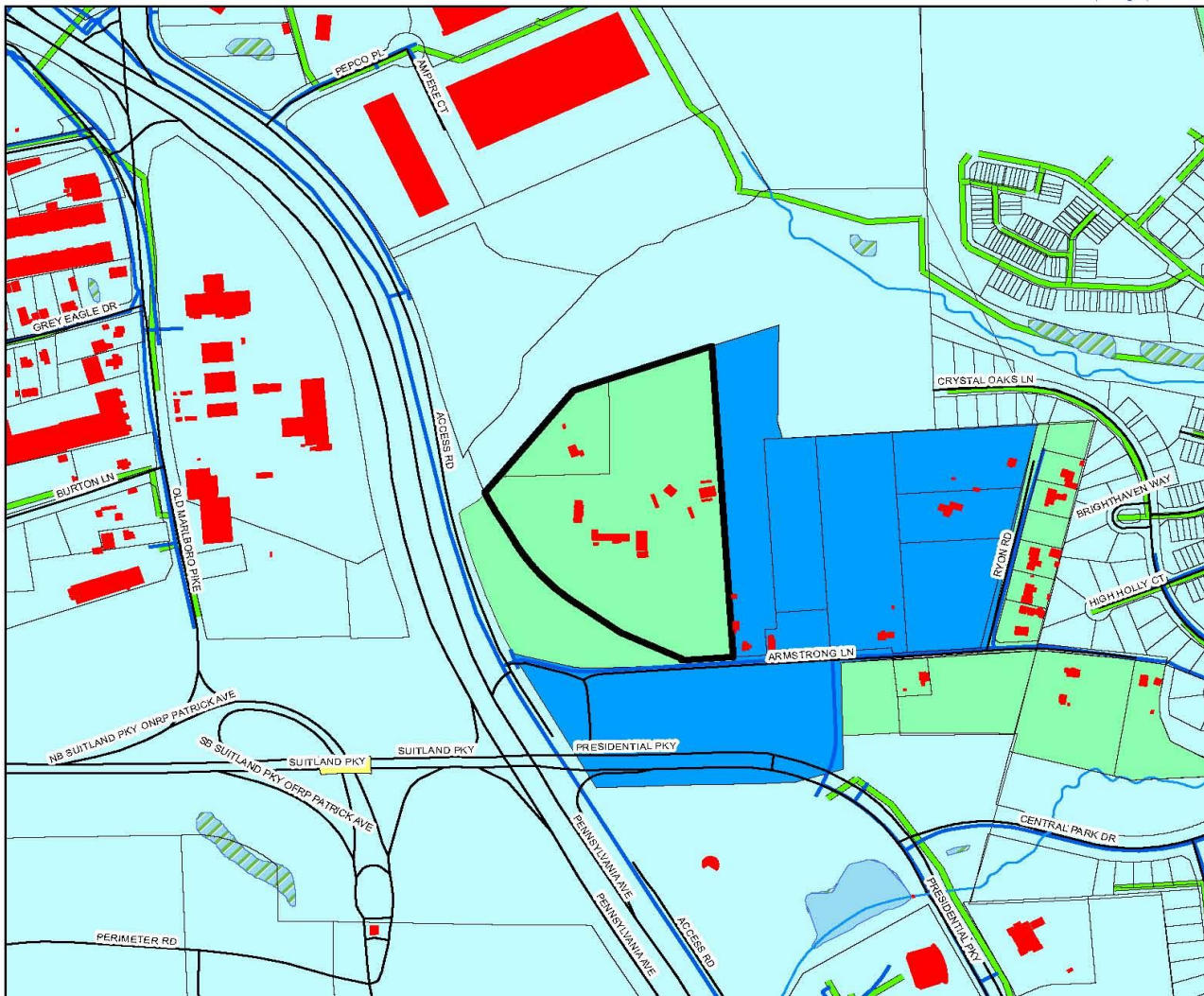
Envelope Boundary	Property
Streams	Wetlands
Ponds	Historical sites
Buildings	
Streets	
Railroad	
Bridges	
Water lines	
Sewer lines	
Pressure Sewer	
Sewer Categories	
S-3 Community System	
S-4 Community System Adequate for Development Planning	
S-5 Future Community system	
S-6 Individual System	
S-6P Private, Shared or Community System	



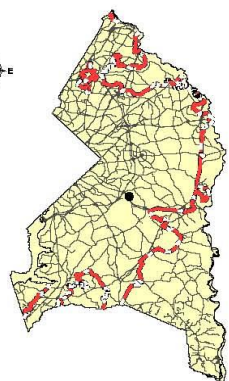
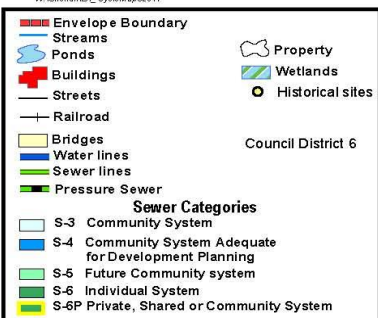


Wood Property

April 2017 Cycle
Application : 17/W-01



Department of the Environment
Sustainable Initiatives Division
Program Support Section
W:\Sheridan\LA_CycleMaps2017





Moore's Corner

April 2017 Cycle
Application : 17/P-01



Department of the Environment
Sustainable Initiatives Division
Program Support Section
W/S/Shell/01LA_CycleMaps2017

- Envelope Boundary
 - Streams
 - Ponds
 - Buildings
 - Streets
 - Railroad
 - Bridges
 - Water lines
 - Sewer lines
 - Pressure Sewer
 - Property
 - Wetlands
 - Historical sites
- Council District 9
- Sewer Categories**
- S-3 Community System
 - S-4 Community System Adequate for Development Planning
 - S-5 Future Community system
 - S-6 Individual System
 - S-6P Private, Shared or Community System

