

# JOINT PUBLIC HEARING

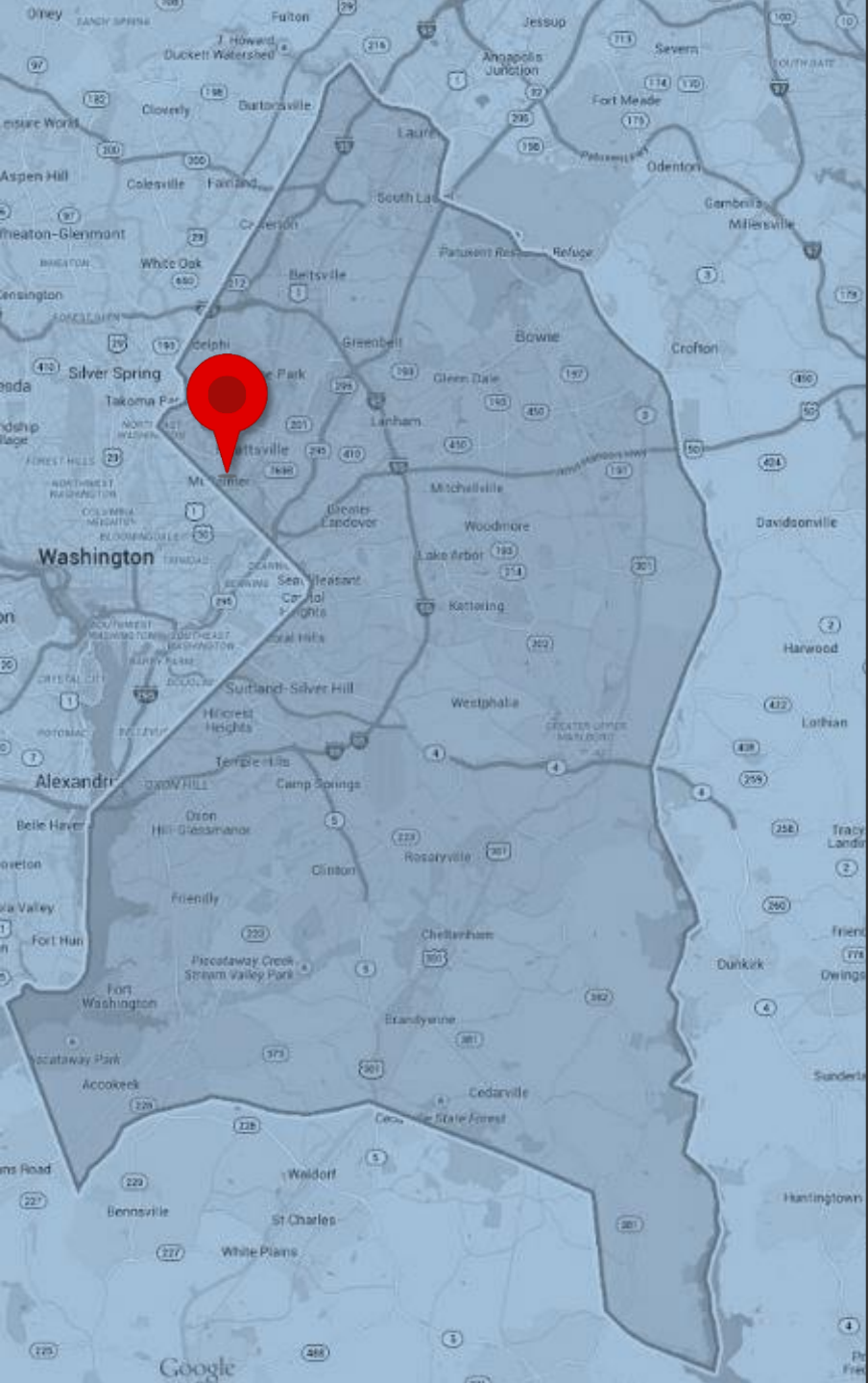
PRINCE GEORGE'S COUNTY COUNCIL  
PRINCE GEORGE'S COUNTY PLANNING BOARD



May 4, 2026

# Proposed Historic Site Designation

Weinstein House/Harry's Market  
4221 31<sup>st</sup> Street, Mount Rainier



# Procedural History

October 22, 2025	<p>The Historic Preservation Section accepted the owner's Application for Historic Site Evaluation, in compliance with Subtitle 29-120.01.</p> <p>The property is not listed in the Inventory of Historic Resources.</p>
December 17, 2025	<p>The property owner and the adjacent property owners were mailed 60-day written notice of the time, date, and location of the public hearing (Subtitle 29-120.01).</p>
February 2026	<p>The survey and documentation of the property were completed by staff.</p>
February 2, 2026	<p>The property was posted "at least 14 days in advance," according to the provisions of the Prince George's County Historic Preservation Ordinance (Subtitle 29-120.01) and the Prince George's County Zoning Ordinance (Subtitle 27-125.03).</p>
February 17, 2026	<p>HPC Public Hearing</p>
May 4, 2026	<p>Joint Public Hearing</p>

# Property Description



Property location and view from the north.

# Harry's Market (c. 1920)



Harry's Market, Store Entry, and Interior

# Weinstein House (c. 1924)



The Weinstein House, with its three original entrances on the north and west elevations.

# Historic Context

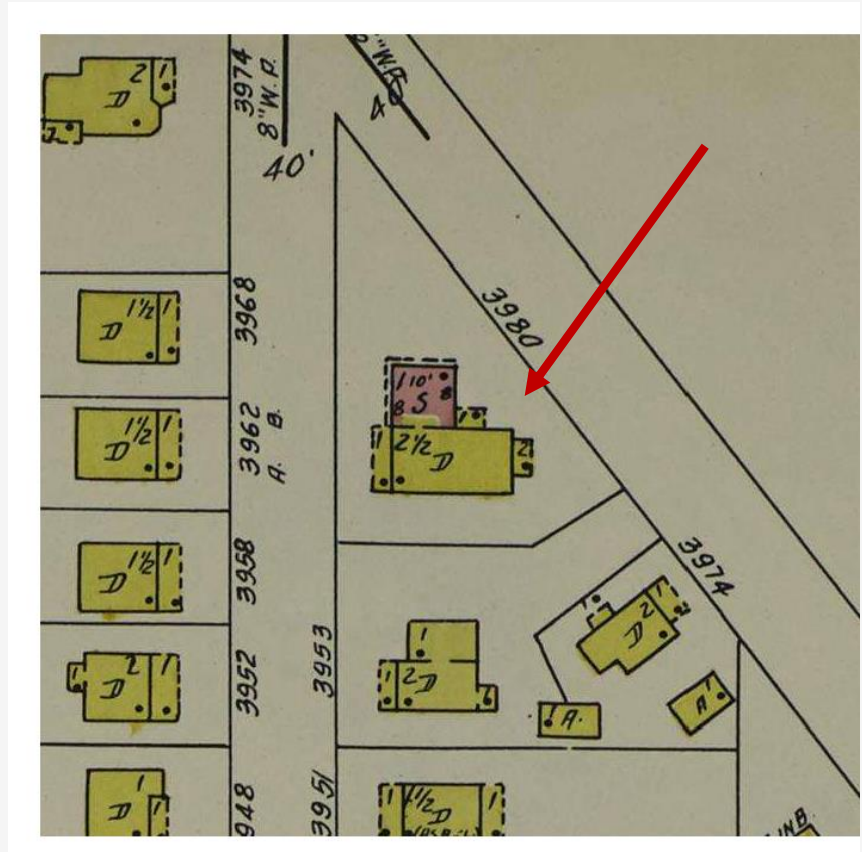


Early Mount Rainier. *PBS.*

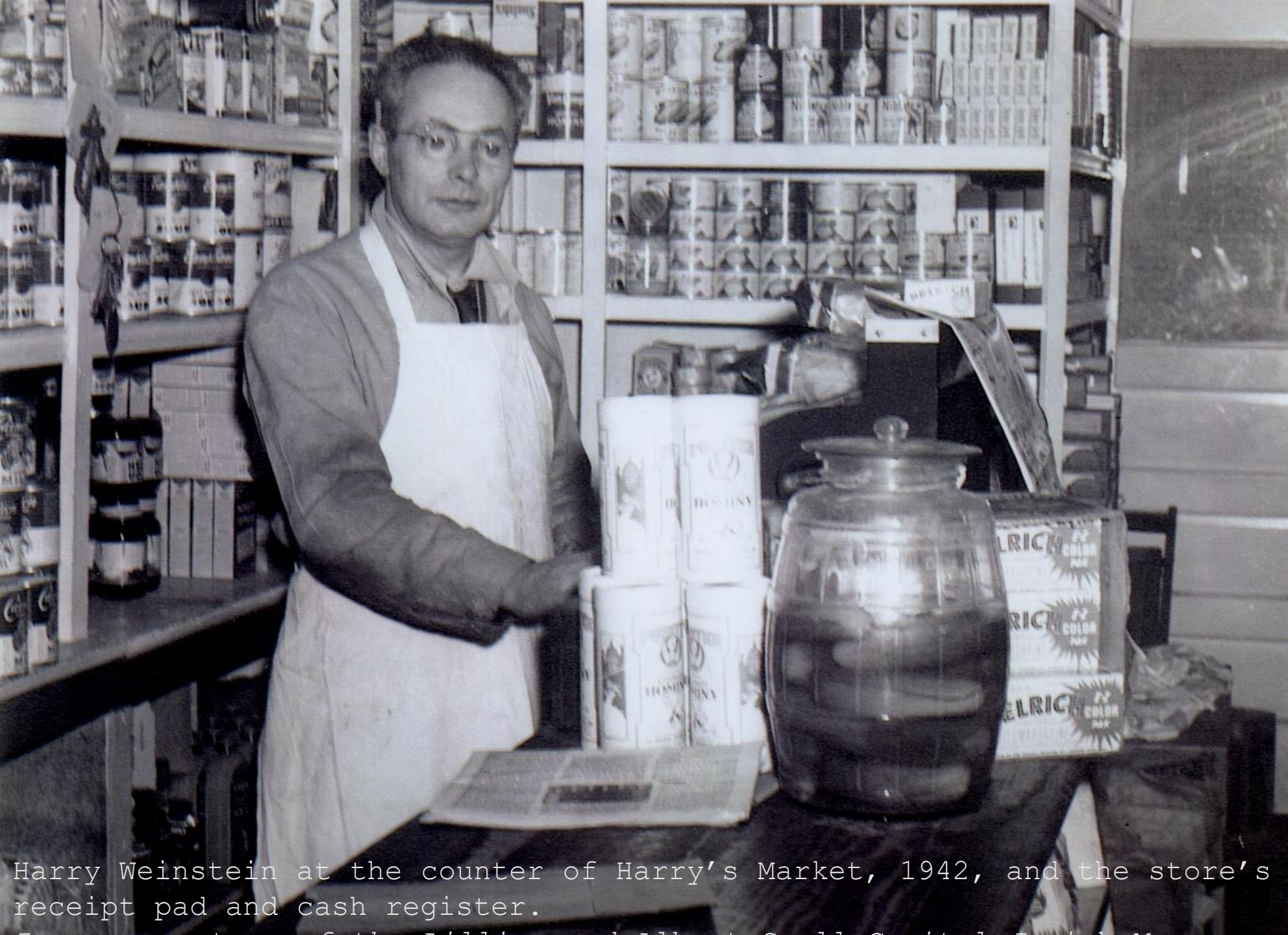
# Harry and Leah Weinstein



Harry and Leah Weinstein, undated.  
*Lillian and Albert Small Capital Jewish  
Museum via YouTube*



Sanborn Fire Insurance Map (1939)



**HARRY'S MEAT MARKET**  
 Groceries, Fresh Meats, Vegetables & Fruits  
 Phone Hyattsville 1061 31st St. & Rainier Ave.

Mount Rainier, Md., 7/6 19 31

M. *Soper*

No. *Baker*

D. G. S. STORE  ACCOUNT FORWARDED  1/01

1	<i>tin</i>	20
2	<i>tin</i>	27
3	<i>tin</i>	20
4	<i>tin</i>	18
5	<i>tin</i>	27
6	<i>tin</i>	13
7	<i>tin</i>	30
8	<i>tin</i>	15
9	<i>tin</i>	10
10	<i>tin</i>	10
11	<i>tin</i>	20
12		
13		
14	<b>1</b>	307
15		



Harry Weinstein at the counter of Harry's Market, 1942, and the store's receipt pad and cash register.

# District Grocery Stores

APRIL 19, 1928. 11

**SPECIALS**  
Until Saturday's  
Closing!

**CALL FOR INFORMATION**  
FRANKLIN 7059

**ONE NEAR** **DGS** **YOUR HOME**  
DISTRICT GROCERY SOCIETY STORES.

**ALL OUR STORES DELIVER**

**PHONE ORDERS GIVEN CAREFUL ATTENTION**

**TWO NEW STORES ADDED TO OUR CHAIN**

<b>1401 E Street S.E.</b> Phone Linc. 2984 O. PEARLSTEIN, Owner	<b>31st &amp; Rainier Ave.</b> Mt. Rainier, Md. Phone Hyattsville 1061 H. WEINSTEIN, Owner
---	---

★ **Old Dutch Cleanser**  
3 Cans

★ **AMERICAN BEAUTY SUGAR-CURED HAMS**

★ **Dill Pickles**  
Crisp and Tasty  
Qt. Jar



Harry's Market joined the DGS cooperative in 1928.

*The Evening Star, April 19, 1928 (L); Library of Congress*

(R)



Vivian and Ruth Weinstein at Harry's Market, c. 1995  
*Courtesy of the Lillian and Albert Small Capital Jewish  
Museum*

# Conclusions

1. The Weinstein House/Harry's Market can be found to meet four of the nine designation criteria of Subtitle 29-104 (a):

---

## Historical and Cultural Significance

1. A. (i)		has significant character, interest or value as part of the development, heritage or cultural characteristics of the County, State or Nation
1. A. (ii)		is the site of a significant historic event
1. A. (iii)	<b>X</b>	is identified with a person or a group of persons who influenced society  <i>The property is associated with the District Grocery Stores cooperative, a group of Jewish immigrant grocers who collectively shaped neighborhood commerce and supported immigrants' economic mobility and social connection in the Washington metropolitan area.</i>
1. A. (iv)	<b>X</b>	exemplifies the cultural, economic, industrial, social, political or historical heritage of the County and its urban and rural

# Conclusions

## Architectural and Design Significance

2. A. (i)		embodies the distinctive characteristics of a type, period or method of construction
2. A. (ii)		represents the work of a master craftsman, architect or builder
2. A. (iii)		possesses high artistic values
2. A. (iv)	<b>X</b>	<p>represents a significant and distinguishable entity whose components may lack individual distinction</p> <p><i>The property represents an early example of a purpose-built mixed-use building. Its complex roof form, porches, stucco cladding, pressed-tin ceiling, and surviving commercial fixtures represent distinctive craftsmanship and retain substantial integrity.</i></p>
2. A. (v)	<b>X</b>	represents an established and familiar visual feature of the

# Conclusions

2. In weighing both the alterations that have been made to the house and the current representation of the resource type within the Inventory of Historic Resources, the Weinstein House/Harry's Market can be found to possess sufficient integrity to convey, represent, or contain the values and qualities for which it is judged significant.

# Recommendation

The Historic Preservation Commission recommends to the Planning Board and District Council that the Weinstein House/Harry's Market, Documented Property 68-074-05, and its 0.196-acre Environmental Setting (Part of Lot numbered Twenty [20] in Block numbered Ten [10] in the subdivision of the tract of land known as "Mt. Rainier"), be designated a Prince George's County Historic Site as meeting the following criteria in Subtitle 29-104(a): (1) (A) (iii); (1) (A) (iv); (2) (A) (iv); and (2) (A) (v).