

JOINT PUBLIC HEARING

PRINCE GEORGE'S COUNTY PLANNING BOARD

PRINCE GEORGE'S COUNTY COUNCIL



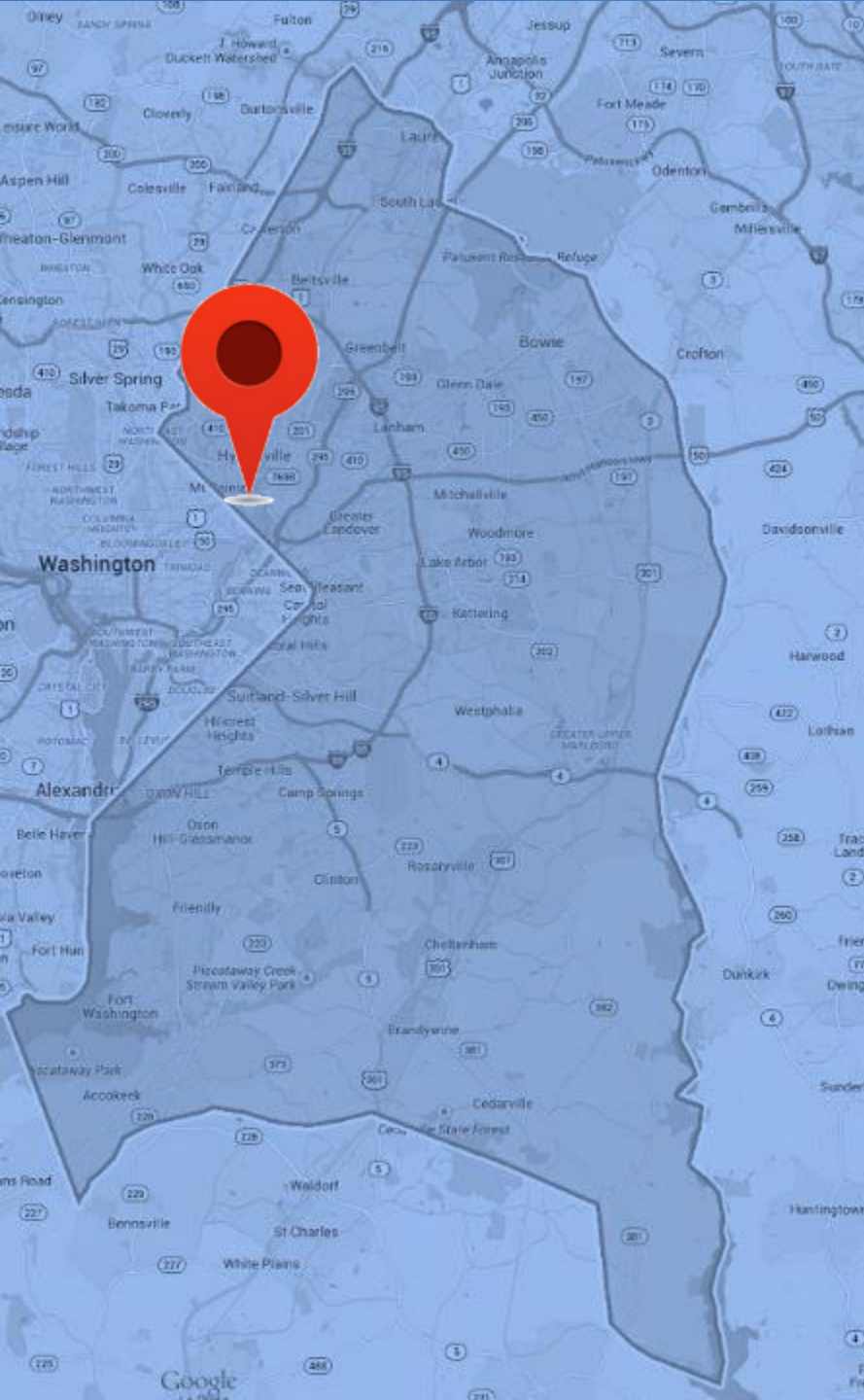
January 18, 2022

Evaluation for Historic Site Designation

Edward and Maggie Smith House
(Documented Property 68-074-03)

Evaluation for Historic Site Designation

Edward & Maggie Smith House
3215 Perry Street, Mount Rainier
(Documented Property 68-074-03)





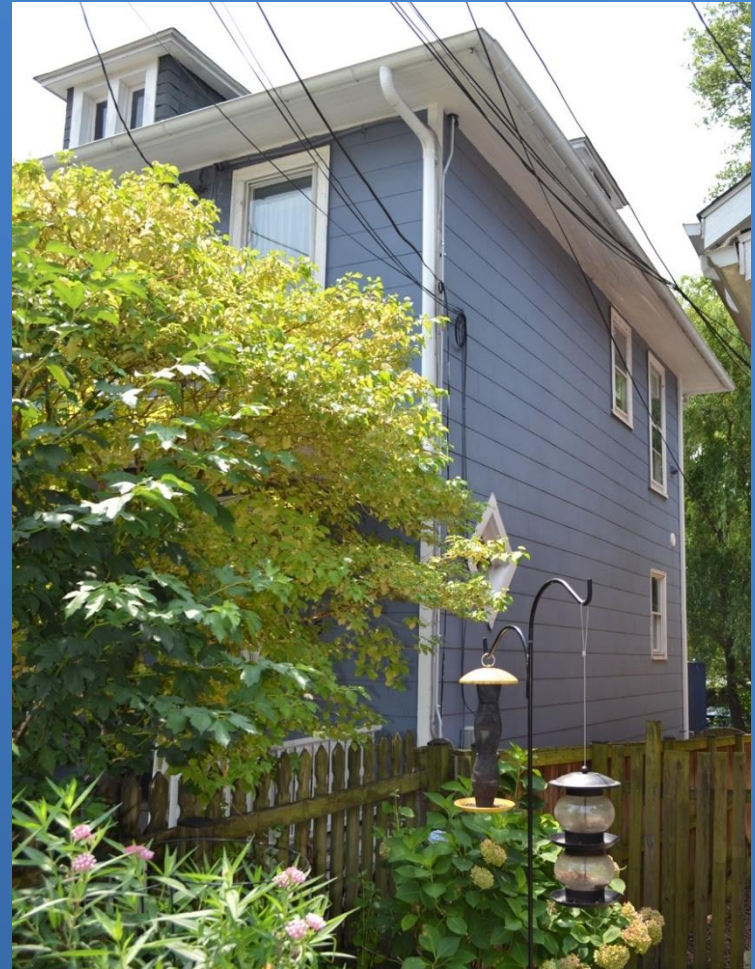
Edward & Maggie Smith House, North Elevation, July 2021



Edward & Maggie Smith House, East Elevation, July 2021



North side of East Elevation



Northwest Corner

July 2021



Edward & Maggie Smith House, South Elevation, July 2021



Shed in Southwest corner



Infilled Cistern/Well

July 2021

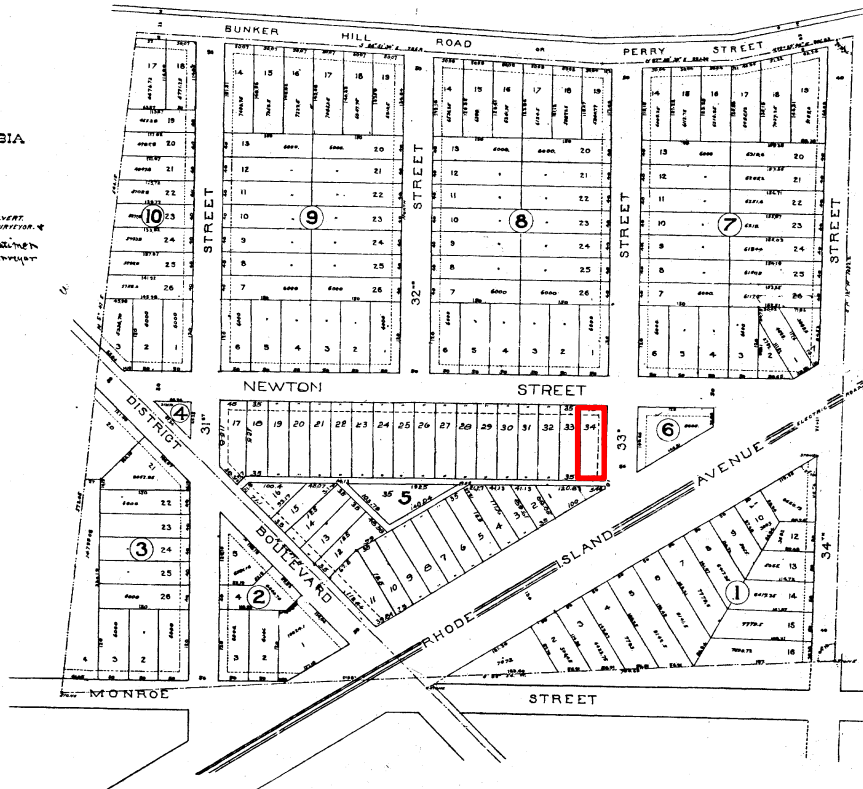
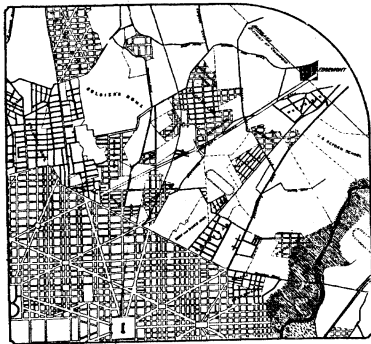
1-48

ROGERS' SECOND ADDITION
 TO
MOUNT RAINIER
 of Block 5
 BEING A RE-SUBDIVISION OF EDGEMONT

SITUATED ON
 RHODE ISLAND AVENUE - DISTRICT OF COLUMBIA
 AND
 PRINCE GEORGES COUNTY MARYLAND

For particulars, apply to
JAS. C. or J. H. ROGERS
 MT. RAINIER, MD.

CHAS. H. CALVERT,
 SURVEYOR,
E. L. Rainier
 SURVEYOR



Enrolled Dec. 27-1907

MSA CSU 2381-93C

1-48

Rogers' Second Addition to Mount Rainier, Edward & Maggie Smith Property highlighted



1920 aerial view of Mount Rainier, Edward & Maggie Smith House highlighted

3231	95	100	Smith Edward	Head	0	5000	R	W	M	W	57	11	23	nd	44	Maryland	Maryland	Maryland
			Margaret	Wife				W	F	W	55	11	21	nd	42	Virginia	Virginia	Virginia

1930 U.S. Census



Edward & Maggie Smith House, North Elevation, July 2021

Conclusions

I. Staff concluded that the Edward and Maggie Smith House can be found to meet three of the nine designation criteria of Subtitle 29-104(a):

Historic and Cultural Significance

- I.A. (i) has significant character, interest or value as part of the development, heritage or cultural characteristics of the County, State or Nation
- I.A. (ii) is the site of a significant historic event
- I.A. (iii) is identified with a person or a group of persons who influenced society
- I.A. (iv) **X** exemplifies the cultural, economic, industrial, social, political or historical heritage of the County and its urban and rural communities

Architectural and Design Significance

- 2.A. (i) **X** embodies the distinctive characteristics of a type, period or method of construction
- 2.A. (ii) represents the work of a master craftsman, architect or builder
- 2.A. (iii) possesses high artistic values
- 2.A. (iv) represents a significant and distinguishable entity whose components may lack individual distinction
- 2.A. (v) **X** represents an established and familiar visual feature of the neighborhood, community or County due to its singular physical characteristics or landscape

Conclusions

2. Staff further concluded that, in weighing the alterations that have been made to the structure since its original construction, the Edward and Maggie Smith House can be found to possess sufficient integrity to convey, represent, or contain the values and qualities for which it is judged significant.

Recommendation

The Historic Preservation Commission recommends to the Planning Board and District Council that the Edward and Maggie Smith House, Documented Property 68-074-03, and its 0.129-acre Environmental Setting (Lot 34 in Block 5, Rogers' Second Addition to Mount Rainier), be designated a Prince George's County Historic Site as meeting the following criteria in Subtitle 29-104(a): (1)(A)(iv), (2)(a)(i), and (2)(a)(v)