

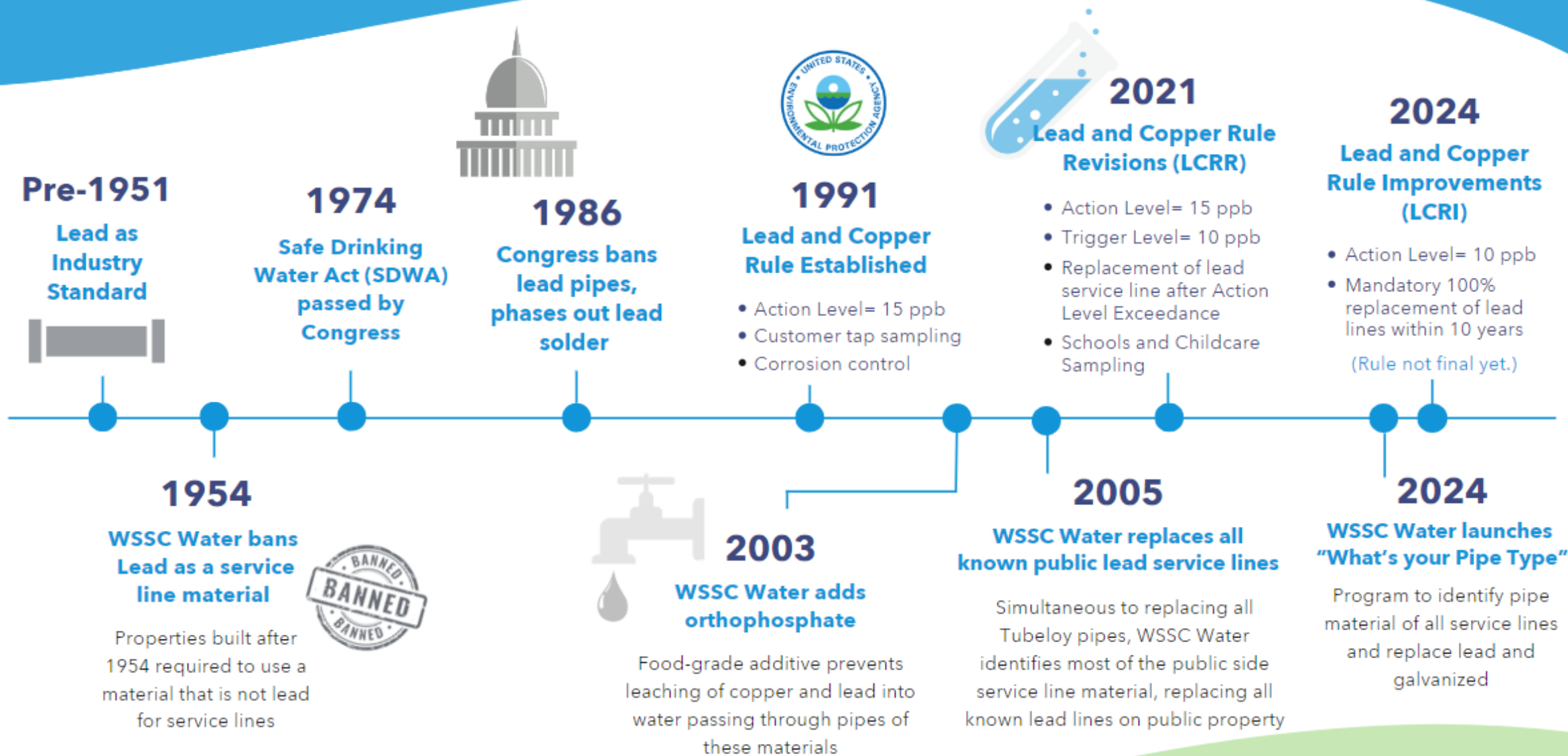


Lead Reduction Program

Jin Shin, Tom Hilton, Kelly Caplan

July 23, 2024

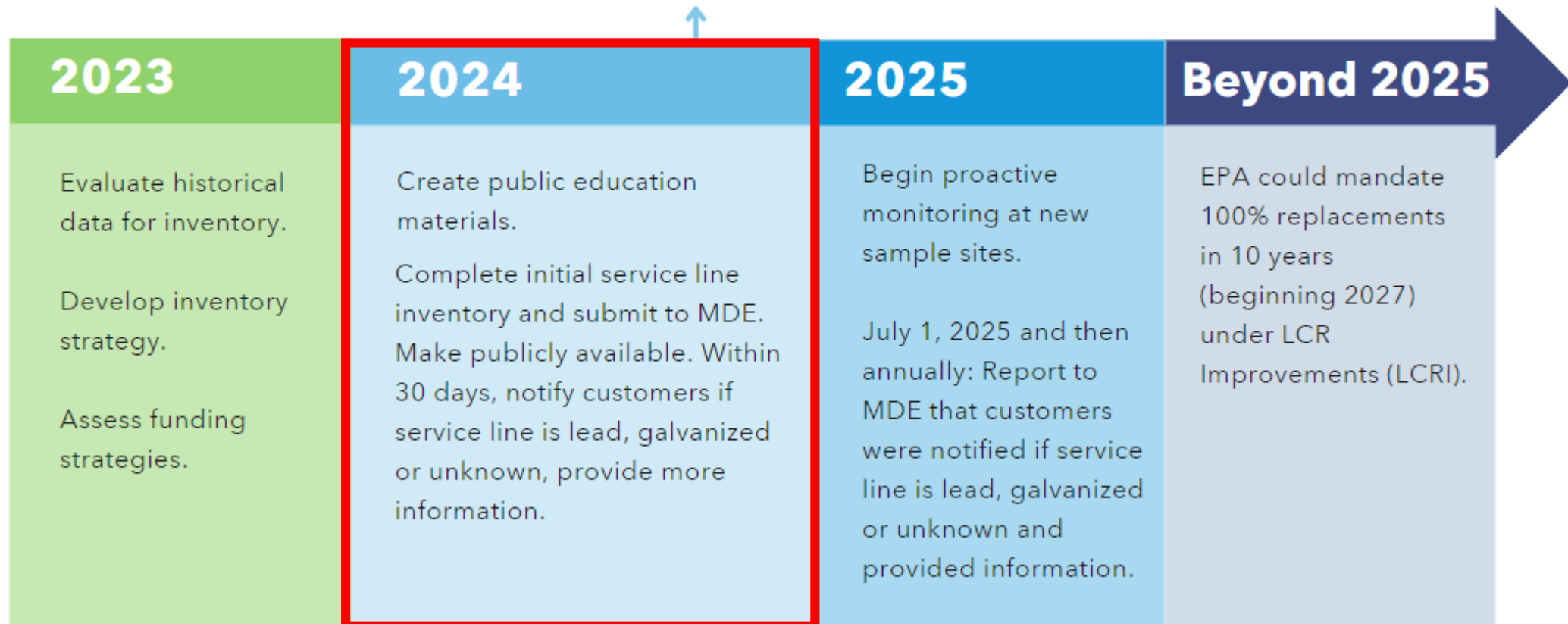
Evolution of Lead Reduction



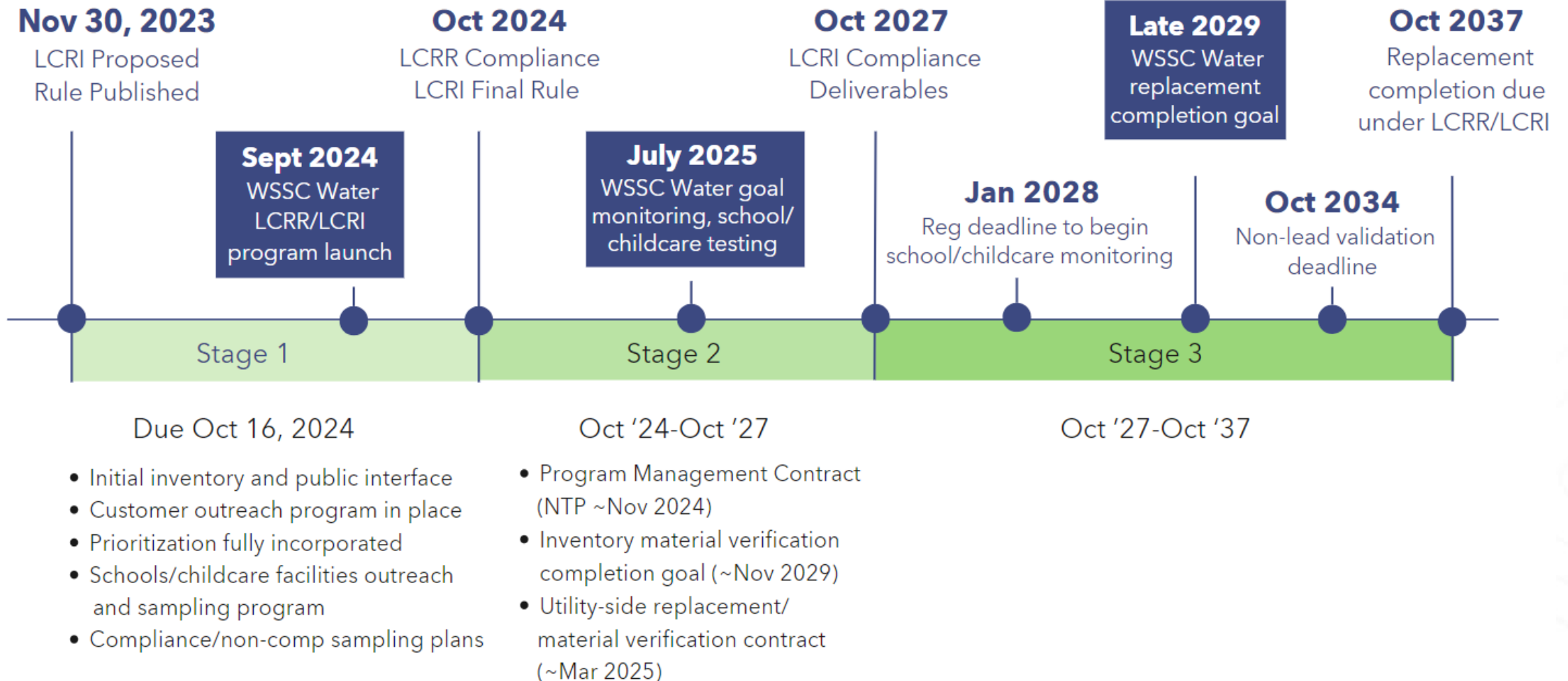
2021 Requirements for Water Systems Lead and Copper Rule Revisions (LCRR)

OCTOBER 16, 2024

Lead and Copper Rule Revisions Compliance Date

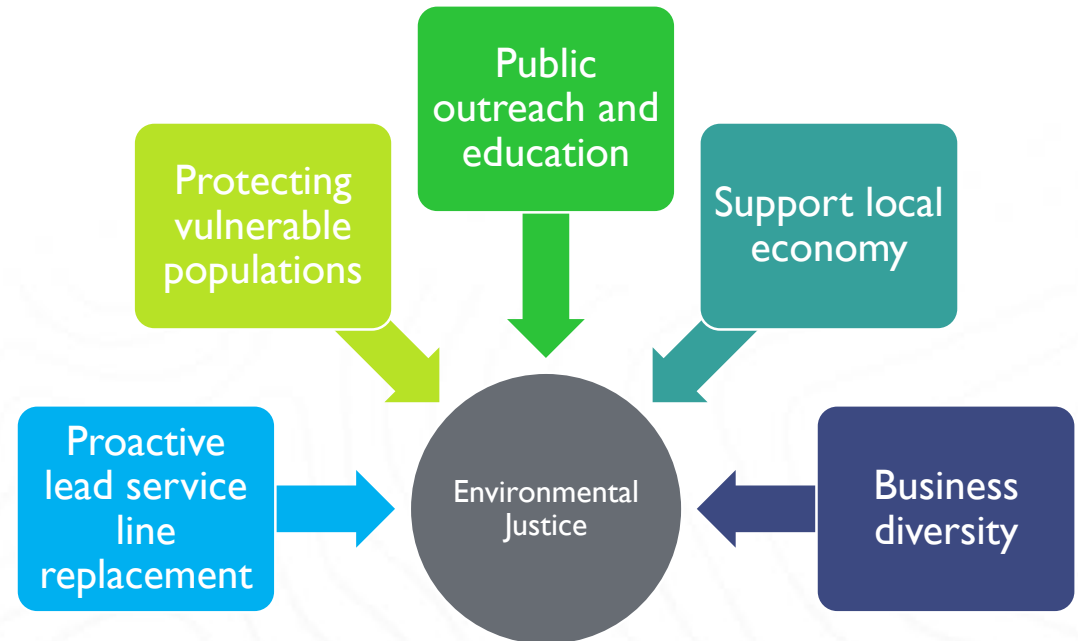


WSSC Water Program Timeline

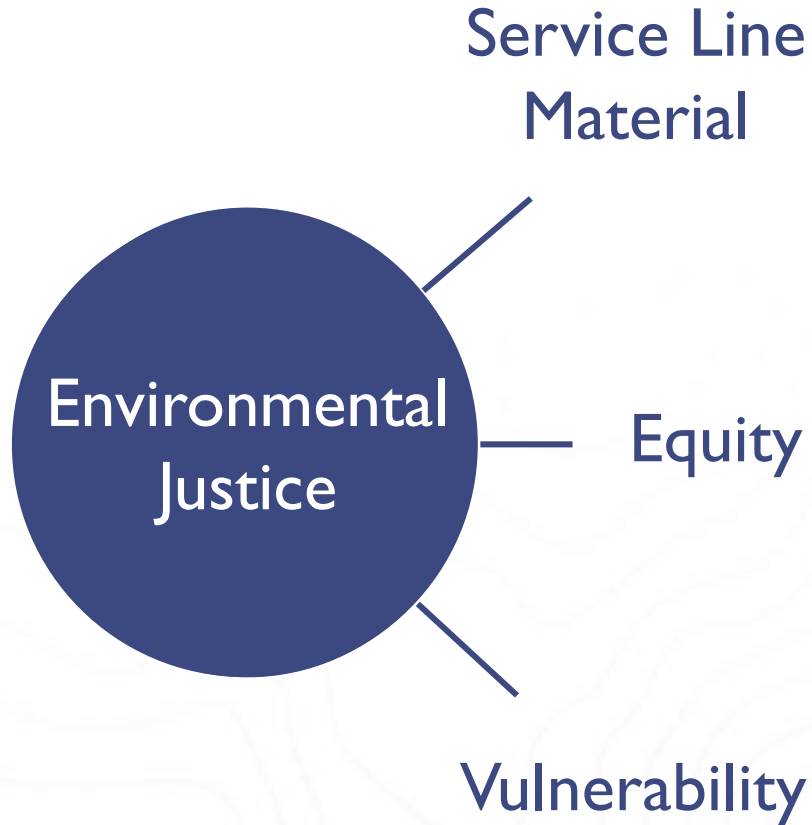


Program Objectives

- Protect public health.
- Comply with the requirements of the Lead and Copper Rule Revisions (LCRR) and align with the Lead and Copper Rule Improvements (LCRI).
- Maximize customer participation through a comprehensive public education, outreach, and engagement plan.
- Prioritize vulnerable populations and ensure environmental justice and equity for pipe material identification and service line replacement.
- Support local economy.
- Maximize business diversity and inclusion.



Prioritization

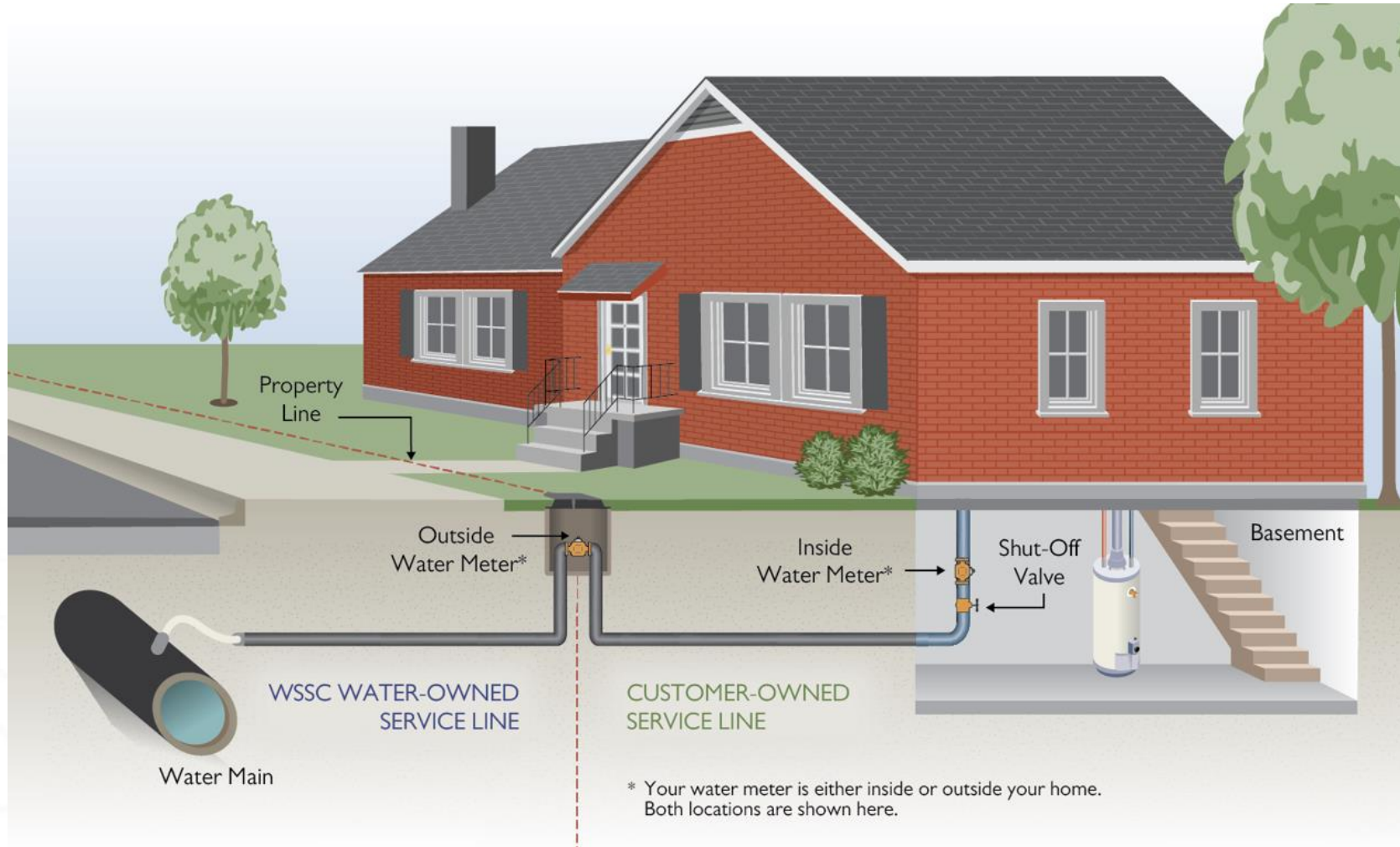


- Lead service lines
- Galvanized Requiring Replacement
- Lead likelihood

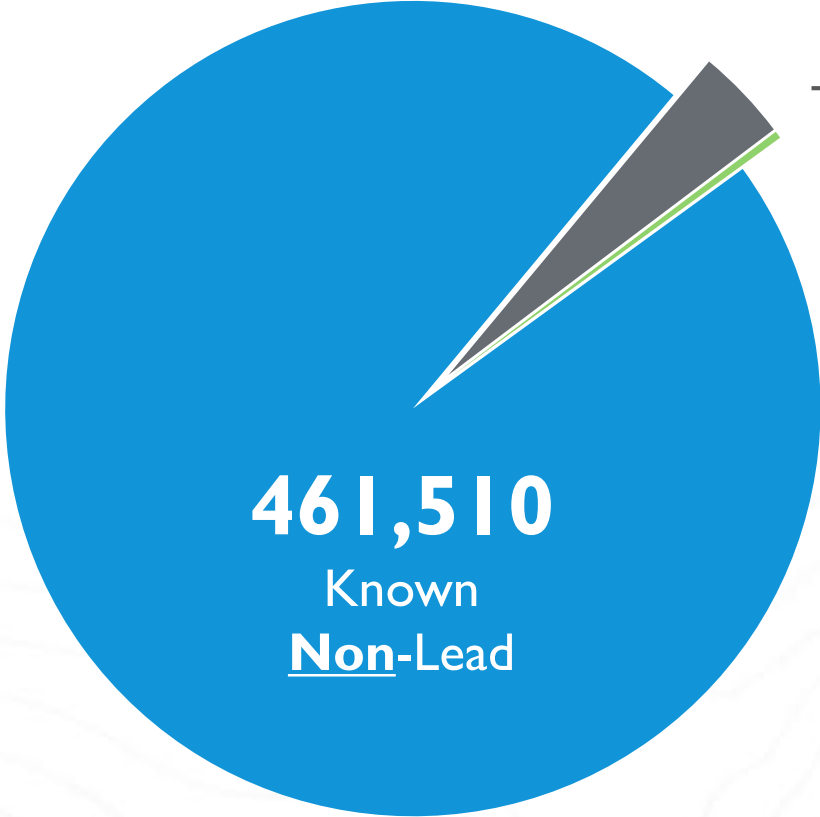
- Disadvantaged Communities

- Blood Lead Level
- Schools and Childcare
- Children under 6
- Pregnant Women

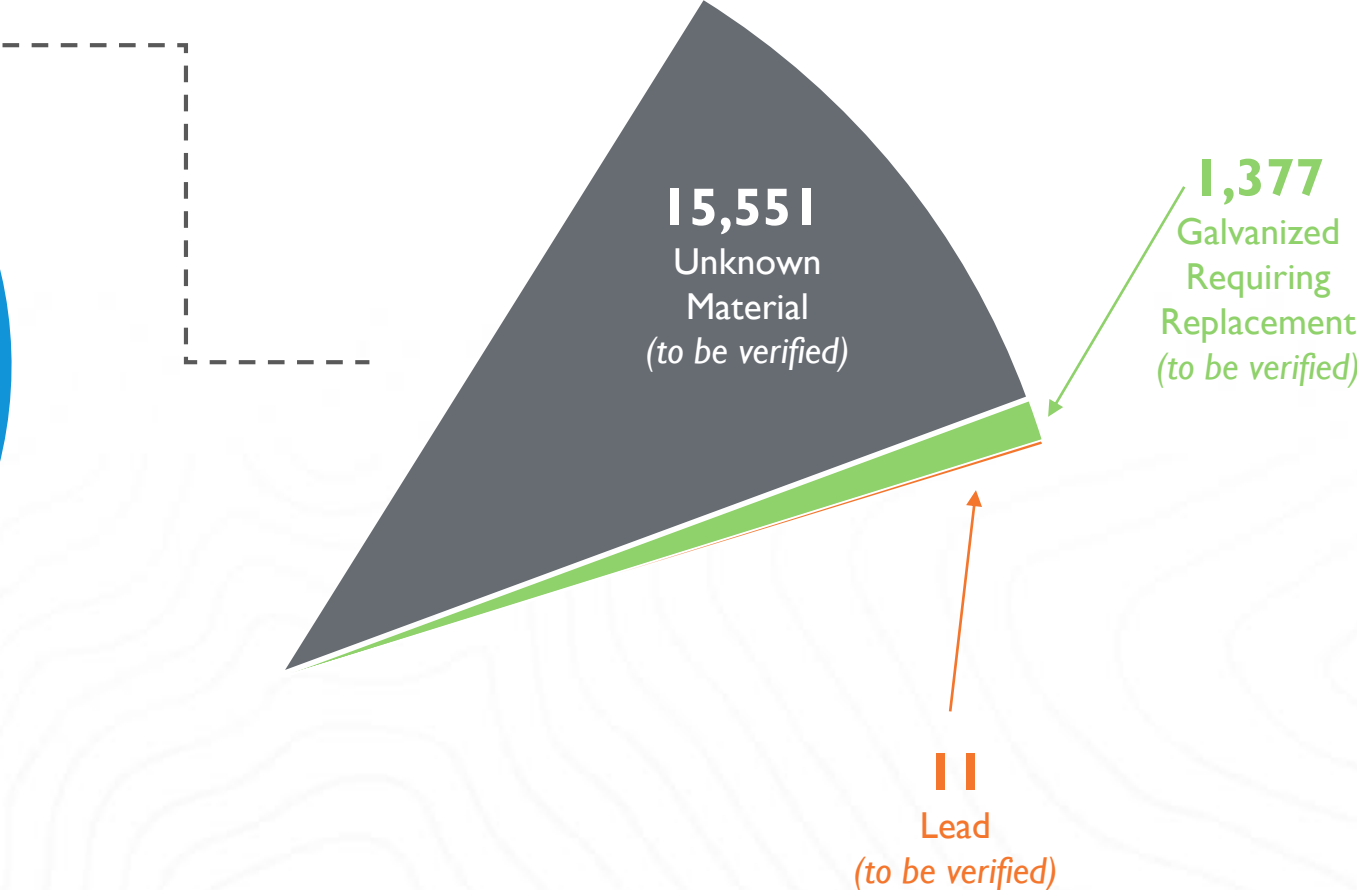
What is a Water Service Line?



Water Service Line Inventory*



478,449
Total Number
of Service Lines



*Inventory as of September 2024. Numbers will change as verification continues. 8

Water Service Line Inventory*



Material	Utility Side	Customer Side	Both Sides	Total
Known Non-Lead			461,510	461,510
Unknown Material <i>(to be verified)</i>	4,024	1,805	9,722	15,551
Galvanized Requiring Replacement <i>(to be verified)</i>	N/A	1,377	N/A	1,377
Lead <i>(to be verified)</i>	9	2	0	11
				478,449

*Inventory as of July 2024. Numbers will change as verification continues.

Montgomery County

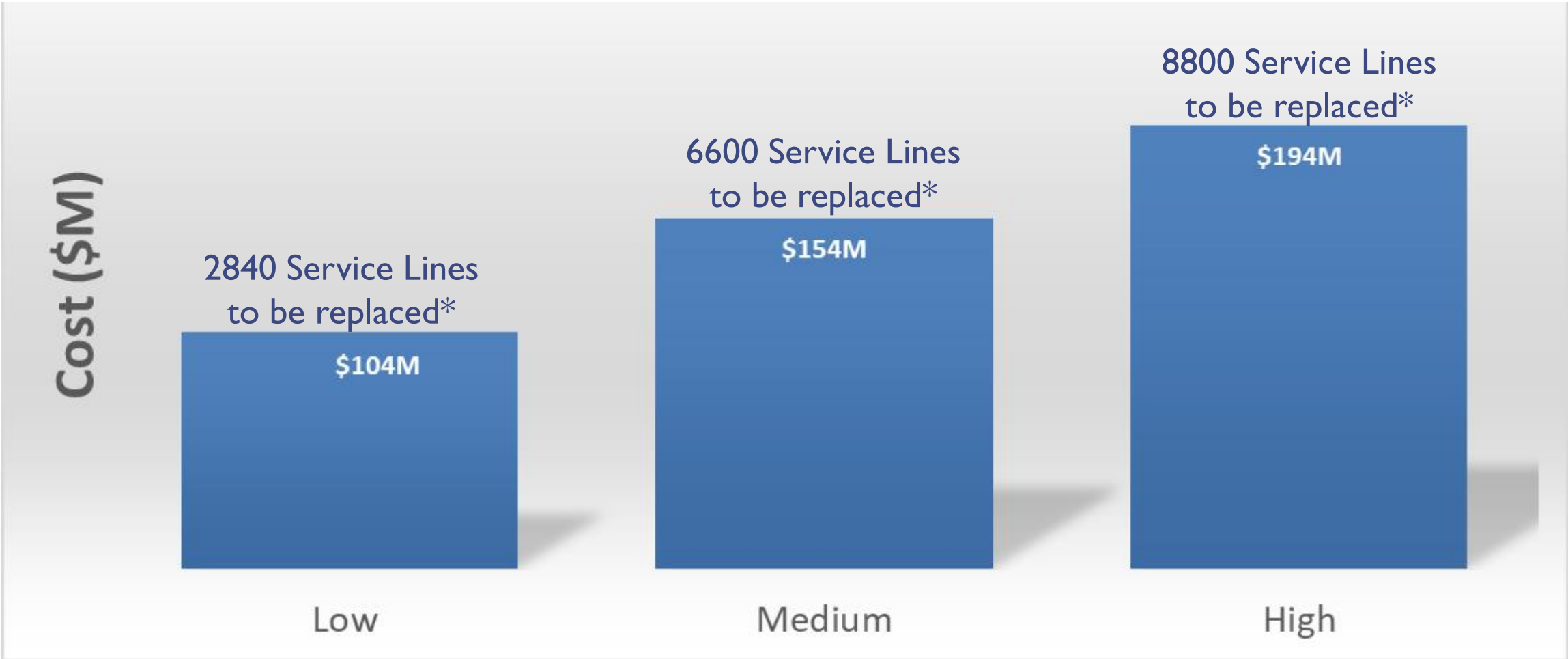


Lead Service Line Invent...							
Lead		Galvanized		Non-Lead		Unknown	
Utility 5	Customer 0	Utility 0	Customer 498	Utility 236,291	Customer 237,071	Utility 5,271	Customer 3,998

Prince George's County

Lead Service Line Inven...							
Lead		Galvanized		Non-Lead		Unknown	
Utility 4	Customer 2	Utility 0	Customer 887	Utility 228,332	Customer 228,464	Utility 8,546	Customer 7,529

Program Projected Cost Based on Initial Inventory and Likelihood Analysis

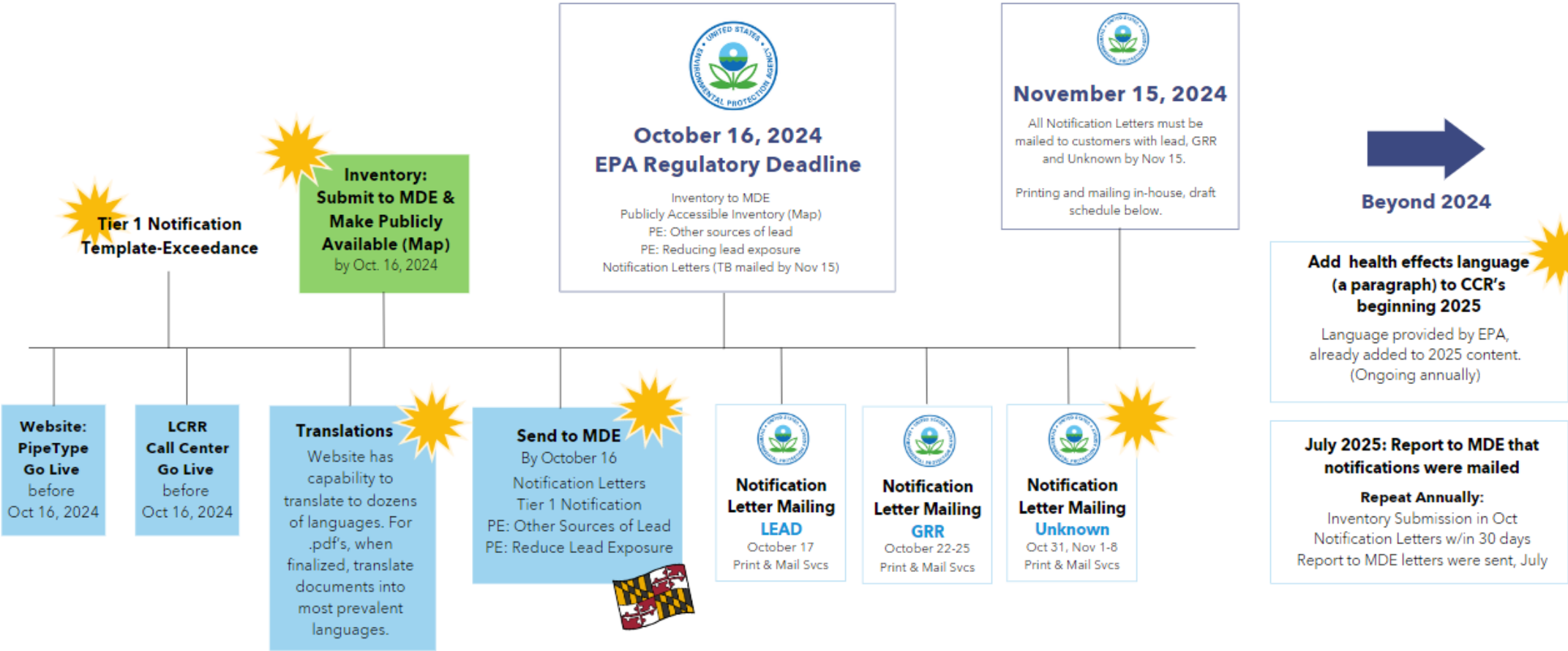


*For planning purposes at this time. Numbers will be refined as analysis continues.

Financial and Regulatory Constraints

- Funding gap exists
 - Total program costs \$194M
 - \$22M SRF funding available
 - Applied for \$43.5M additional SRF funding
- Ratepayer dollars cannot currently be used to fund replacement of privately owned lead service lines
 - SRF funds are administered in the form of a loan, and cannot be used for private side replacement
 - Currently in discussion with MDE for possible alternative form of funds
- County support is required for customer participation and success of program
 - Assistance to require homeowner to provide access to test lines on their properties
 - Assistance in identifying alternative funding mechanisms to address private side replacements
 - Financial assistance program to support customers in disadvantaged communities

EPA Requirements October 2024



Communications and Outreach

Strategies

Dedicated contact center

Public/virtual meetings

Educational materials

Targeted outreach

Collaboration and Partnership

Community and faith-based organizations

State/local support programs

Stakeholder/county advocacy and support

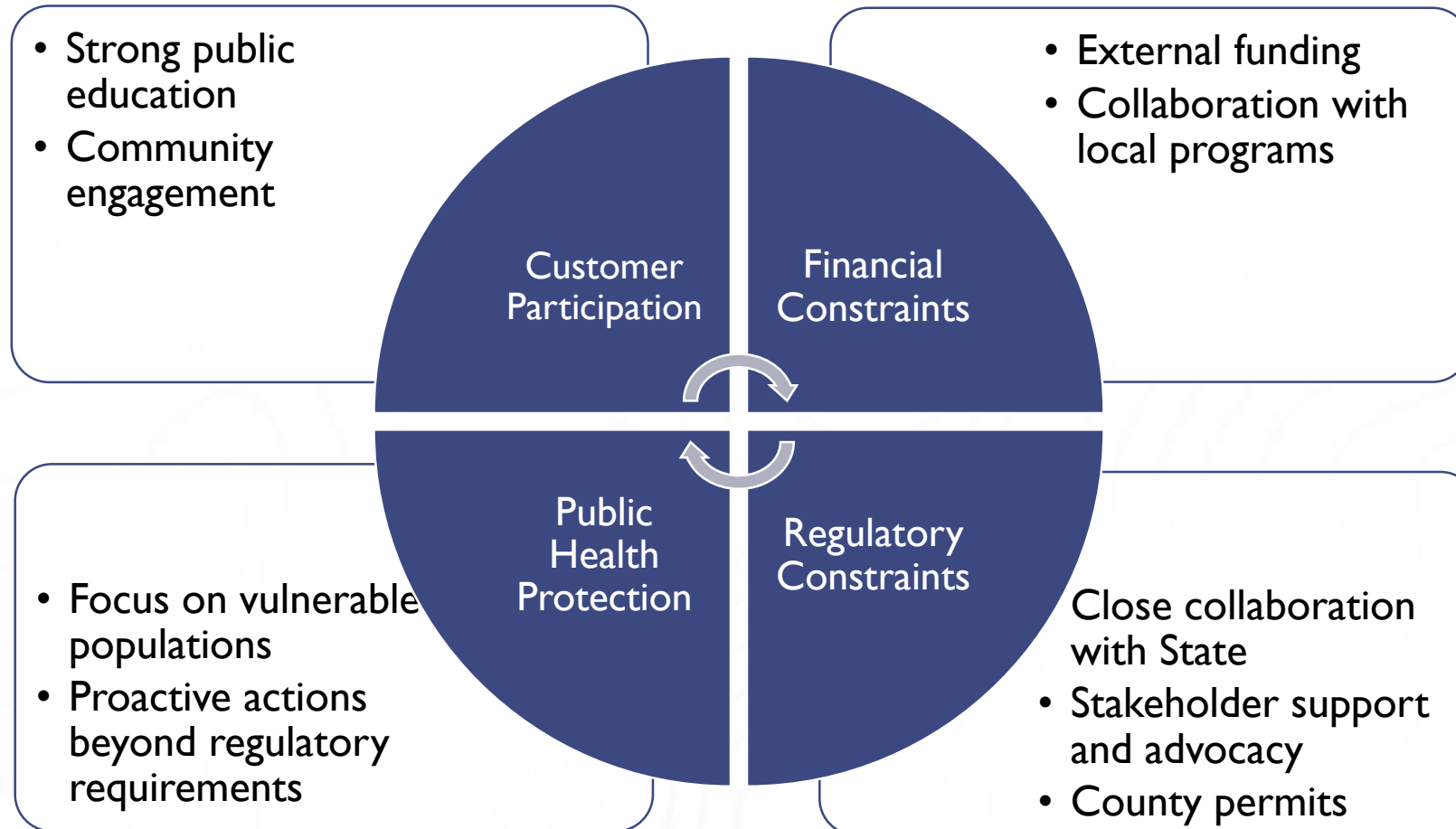
Community Engagement

Canvass neighborhoods

Provide education

Encourage participation in both material identification and replacement

Opportunities and Challenges





Questions?

