

**WATER AND SEWER CATEGORY AMENDMENT**

<b>Sewershed Application Councilmanic District</b>	<b>Development Proposal/ Tax Map Location</b>	<b>Acreage/ Zoning</b>	<b>Current Category</b>	<b>Requested Category</b>	<b>Executive's Recommendation</b>	<b>Council Approval</b>
<b><u>Western Branch</u></b>						
16/W-01 Bowie Veterinary Properties, LLC  District 4	Existing 12,000 SF veterinary clinic/referral hospital. 37 E-3; Parcel 316	1.125 C-S-C	S5	S3 <sup>1</sup>	S3	S3
<b><u>Piscataway</u></b>						
16/P-01 7512 Surratts Road Redevelopment  District 9	Existing 2,392 SF residential home to be converted to a medical office. 125 F-1, Parcel 66	1.00 C-O	S5	S3	S3	S3

---

<sup>1</sup> The applicant has requested to connect to the City of Bowie sewer system.

**APPLICATIONS**

**REQUEST**

**MAP #**

**Western Branch**

16/W-01

Bowie Veterinary Properties, LLC

S5 to S3

1

**Piscataway**

16/P-01

7512 Surratts Road Redevelopment

S5 to S3

2



Rushern L. Baker, III  
County Executive

# Water and Sewer Plan Amendments

# Amendment Request S5 to S3

## Bowie Veterinary Properties, LLC

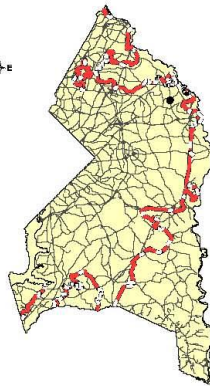
April 2016 Cycle  
Application: 16/W-01



Department of the Environment  
Sustainable Initiatives Division  
Program Support Section  
W/S/16/01/16LA\_CycleMaps2016

Envelope Boundary	Property
Streams	Wetlands
Ponds	Historical sites
Buildings	
Streets	
Railroad	
Bridges	
Water lines	
Sewer lines	
Pressure Sewer	
<b>Sewer Categories</b>	
S-3 Community System	
S-4 Community System Adequate for Development Planning	
S-5 Future Community system	
S-6 Individual System	
S-6P Private, Shared or Community System	

Council District 4







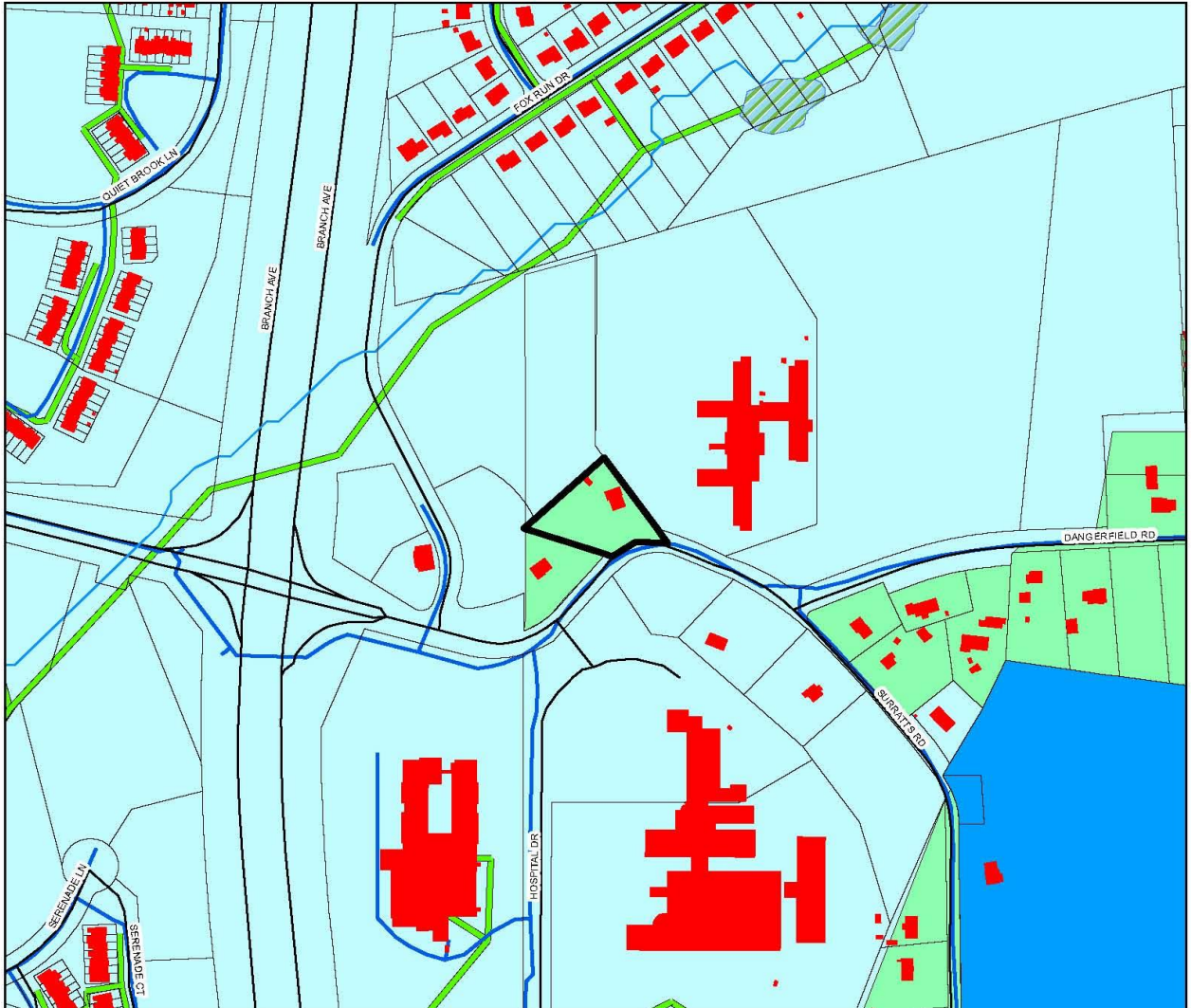
Rushern L. Baker, III  
County Executive

# Water and Sewer Plan Amendments

# Amendment Request S5 to S3

## 7512 Surratts Road Redevelopment

April 2016 Cycle  
Application: 16/P-01



Department of the Environment  
Sustainable Initiatives Division  
Program Support Section  
W:\GIS\Info\LA\_Cycle\Map\2016

Envelope Boundary	Streams	Property
Ponds	Streets	Wetlands
Buildings	Railroad	Historical sites
Water lines	Bridges	
Sewer lines	Pressure Sewer	
Sewer Categories		
S-3 Community System		
S-4 Community System Adequate for Development Planning		
S-5 Future Community system		
S-6 Individual System		
S-6P Private, Shared or Community System		

