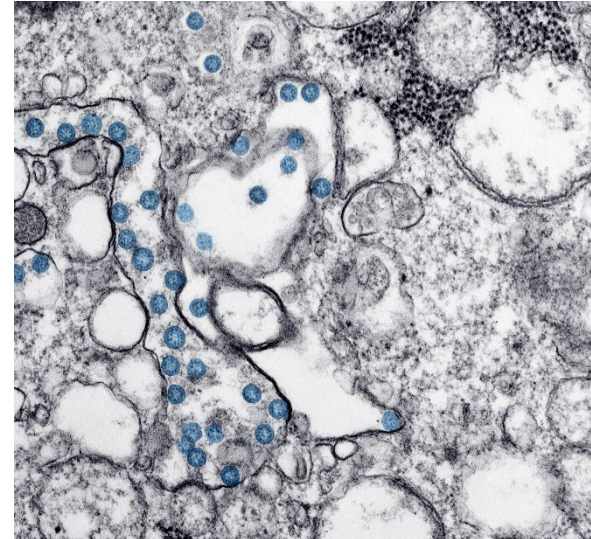
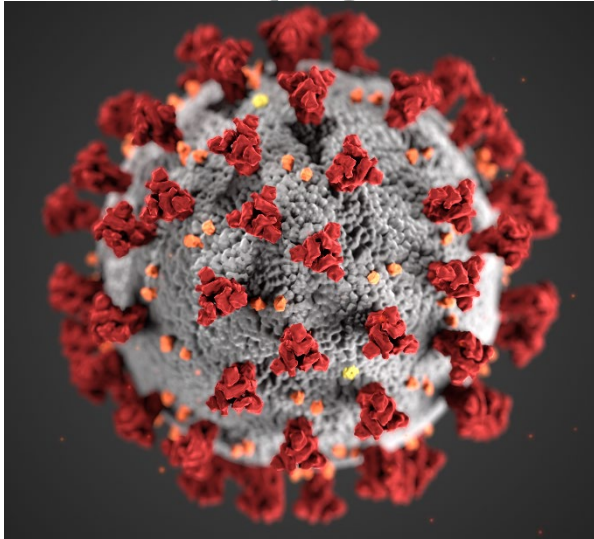


# Prince George's County COVID-19 Update



March 16, 2021

Data is updated daily and subject to change. For the latest information please visit our [COVID-19 Dashboard](#).

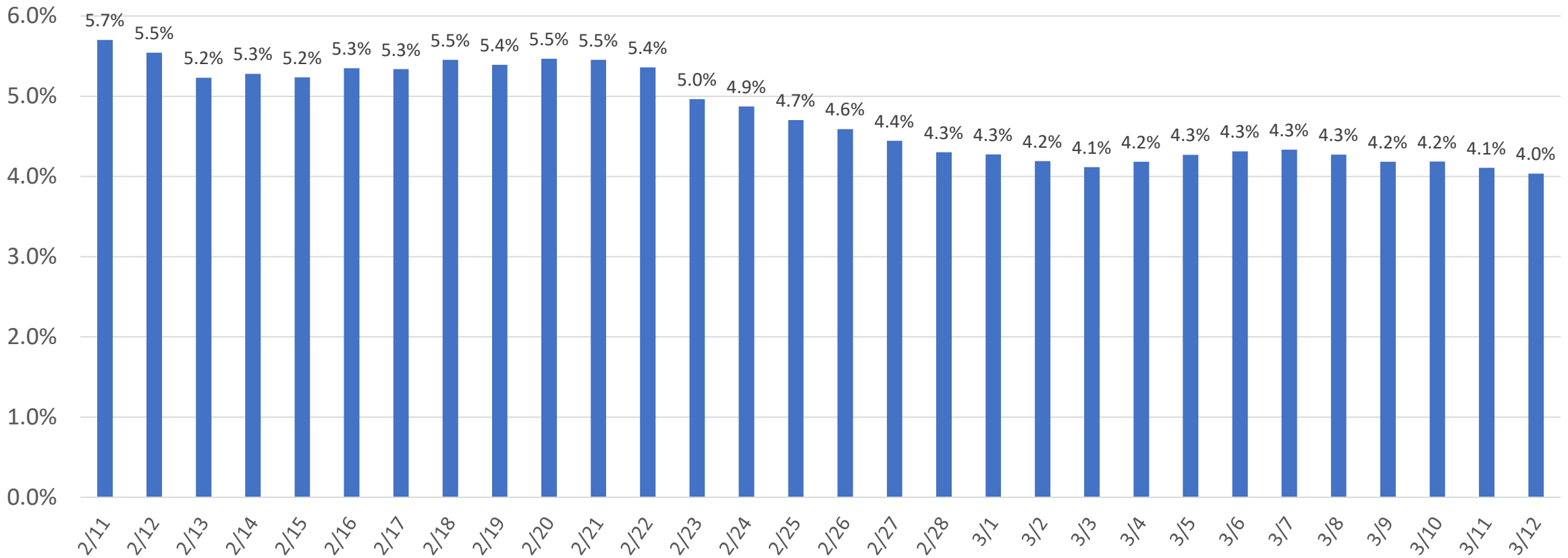
# Highlights:

- In less than 4 weeks, Prince George's County went from 23<sup>rd</sup> in the state in vaccinations, to 3<sup>rd</sup>
- Over 186,000 vaccines have been provided to 132,903 county residents (53,1317 residents have received their second vaccination).
- We reached over 36,000 resident vaccinations last week for a new high, which includes approximately 6,800 of the recently approved single-dose vaccinations.
- Our COVID case metrics allowed us to make broad move to further open the county.

# Adequate Testing: Positivity (7-day Average)

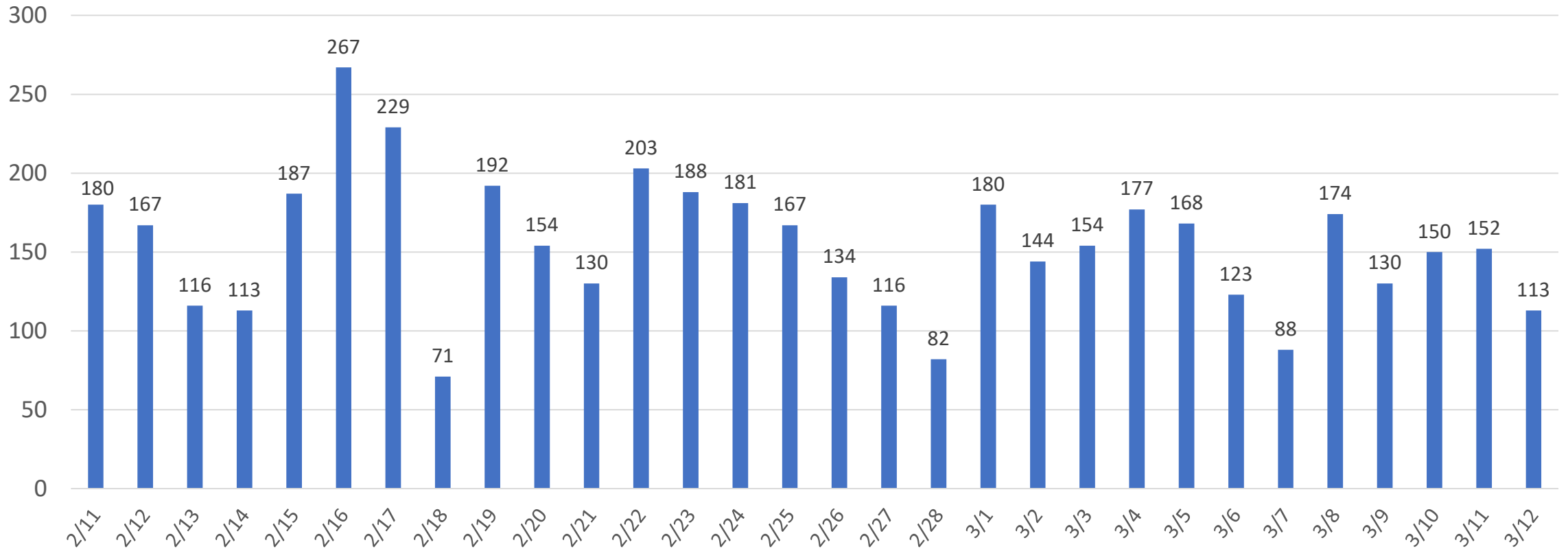
We have been below 5.0% for over two weeks and have seen a further decrease to 4.0% of tests returning as positive.

Percent of Positive COVID-19 Tests by Date Collected (as of 3/16/21)



# COVID-19 Cases (by date of lab collected)

We have trended down since a record high of over 3,700 cases the first week of January. We have not been below 1,000 new cases per week since October 18-24 through we may meet that mark last week. Our cases are currently slowly decreasing.

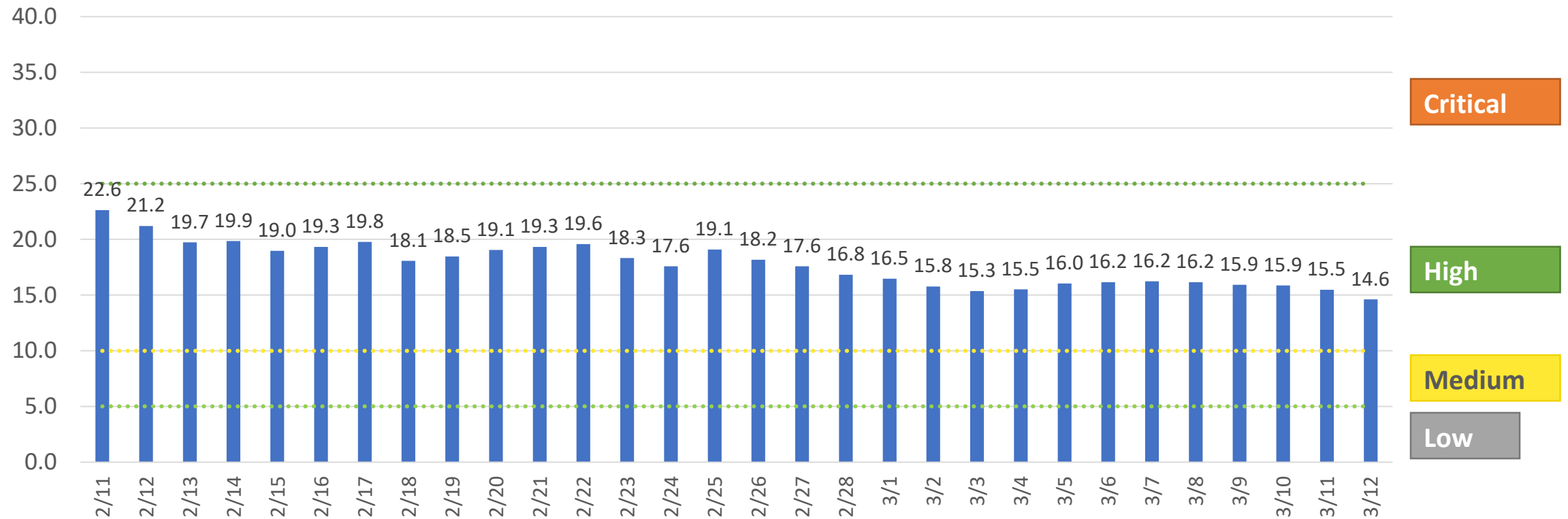


Data as of 3/16/21

# Average Daily Case Rate (7-day Average)

We have decreased to under 15 new cases per 100,000 residents per day. While this is a significant improvement from our high of 58.8 on January 8th we are still in the “high risk” category.

Average New COVID-19 Cases Per Day Per 100,000 Residents



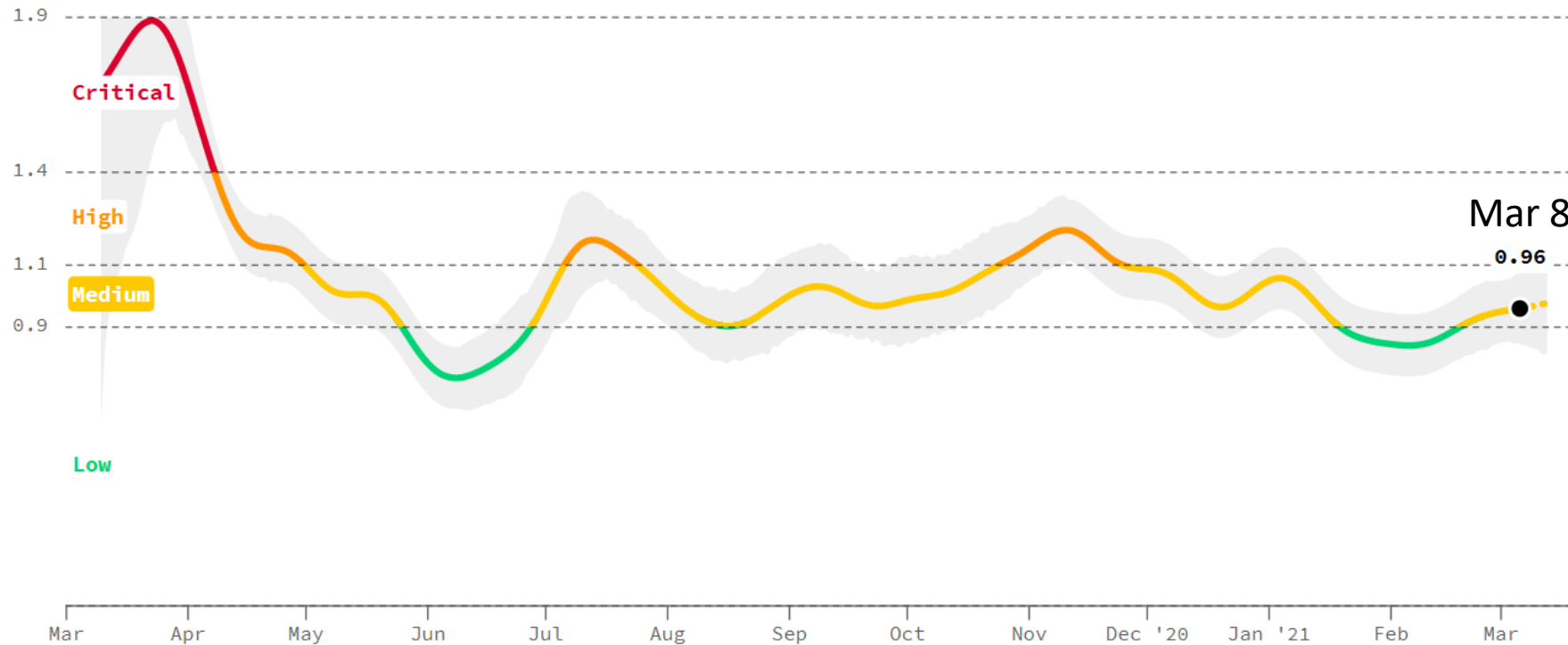
Data as of 3/16/21

# Infection Rate for Prince George's County

## Infection rate ⓘ

PRINCE GEORGE'S COUNTY, MARYLAND

On average, each person in Prince George's County, Maryland with COVID is infecting 0.96 other people. Because this number is around 1.0, it means that COVID continues to spread, but in a slow and controlled fashion.



### Infection Rate for:

Maryland: 1.03

D.C.: 1.05

As of March 8 our infection rate was at 0.96, which places us as “medium risk” meaning that COVID continues to slowly spread.

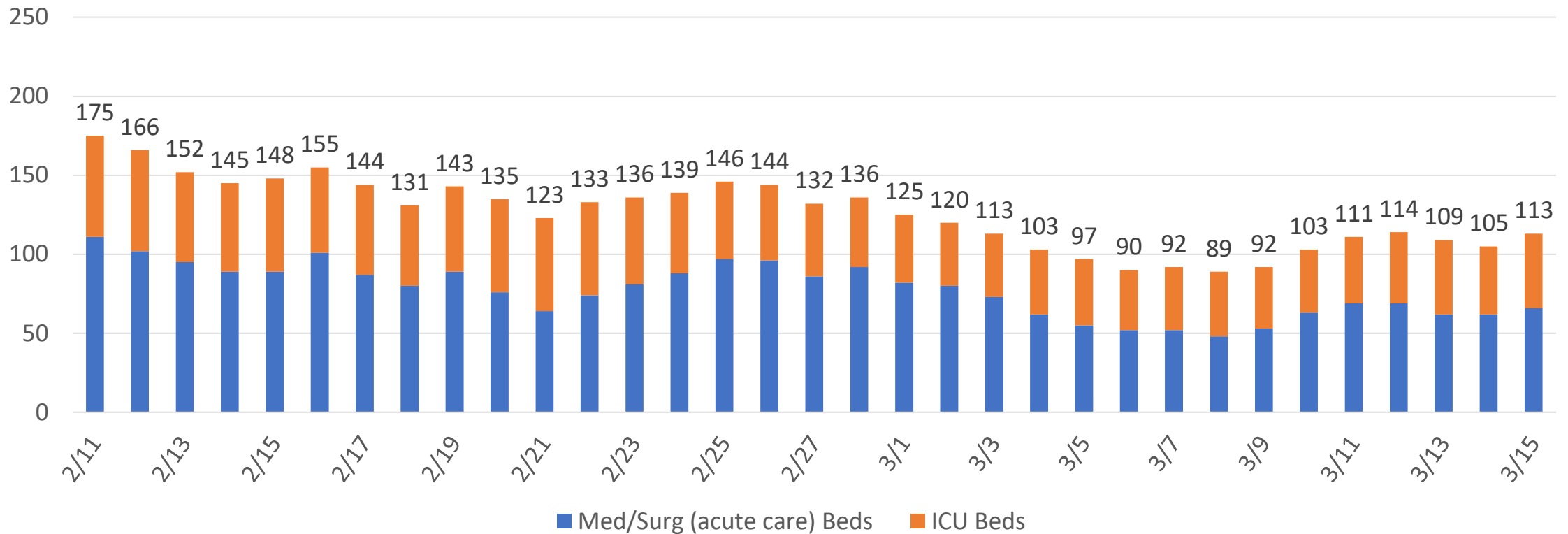
Estimated by CovidActNow.org

Last updated 3/16/2021. Each data point is a 14-day weighted average. Presented as the most recent seven days of data as a dashed line, as data is often revised by states several days after reporting.

# Healthcare System Capacity: Hospitalized COVID-19 Cases

**Our county hospitals continue to see over 100 inpatients with COVID-19 each day.** The number of inpatients with COVID-19 currently uses 10% of our total hospital capacity.

### Prince George's County Hospitals Total COVID-19 Patients

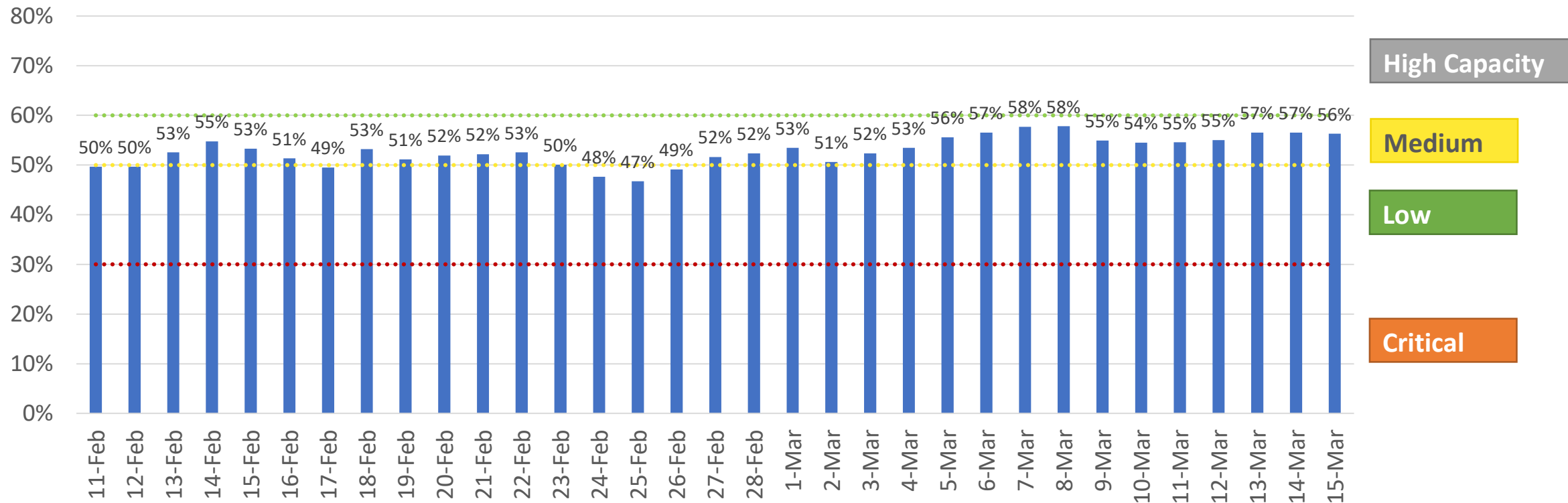


Includes: Doctors Community Medical Center, Fort Washington Medical Center, Laurel Alternate Care Site, Prince George's Hospital Center, and Southern Maryland Hospital Center

# Healthcare System Available Capacity

There are 1,083 hospital beds (including surge beds) within Prince George's County facilities. Our current available capacity is around 56%, while 34% of beds are in use for other issues and 10% are in use for patients with COVID-19.

### Available Hospital Capacity (7-day average)





# Key Metrics

Risk Level and Reopening Phase	Percent of Positive Tests	Infection Rate	Average Daily Case Rate per 100,000 population	Available Hospital Capacity
Low (Phase 3)	0-3%	<0.9	1-5	>59%
Medium (Phase 2)	3.1%-5%	0.9-1.09	5-10	50-59%
High (Phase 1)	5.1%-10%	1.10-1.39	10-25	30-49%
Critical (Closed)	>10%	>1.39	>25	<30%
<b>3/12/21</b>	<b>4.0%</b>	<b>0.96</b> (on 3/8)	<b>14.6</b>	<b>56.3%</b> (on 3/15)

Data as of 3/16/21

# Prince George's County Resident Pre-registration

---

# Resident Pre-registration

Over 178,000 pre-registrations have been received to date; of those **over 156,000 are county residents**. By phase, 62% of pre-registered county residents are included in Phase 1. **Over 36,000 county residents on the pre-registration list have already been vaccinated (23.5%)**

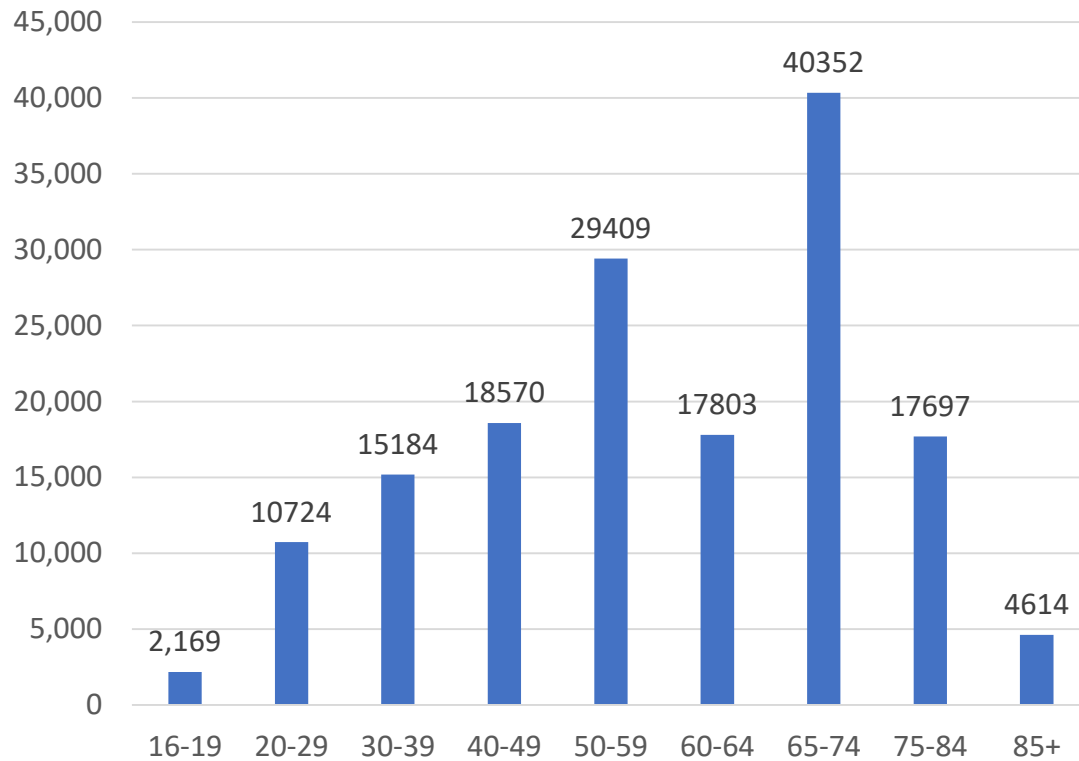
Phase	Number County Residents	Percent of Pre-registration	Number Identified as Vaccinated	Percent Vaccinated Within Each Phase
1a	15,837	10.1%	4,067	25.7%
1b	35,808	22.9%	14,566	40.7%
1c	44,308	28.4%	15,942	36.0%
2	37,059	23.7%	1,448	3.9%
3	23,093	14.8%	590	2.6%
<b>TOTAL</b>	<b>156,105</b>	<b>100.0%</b>	<b>36,613</b>	<b>23.5%</b>

Data as of 3/11/21

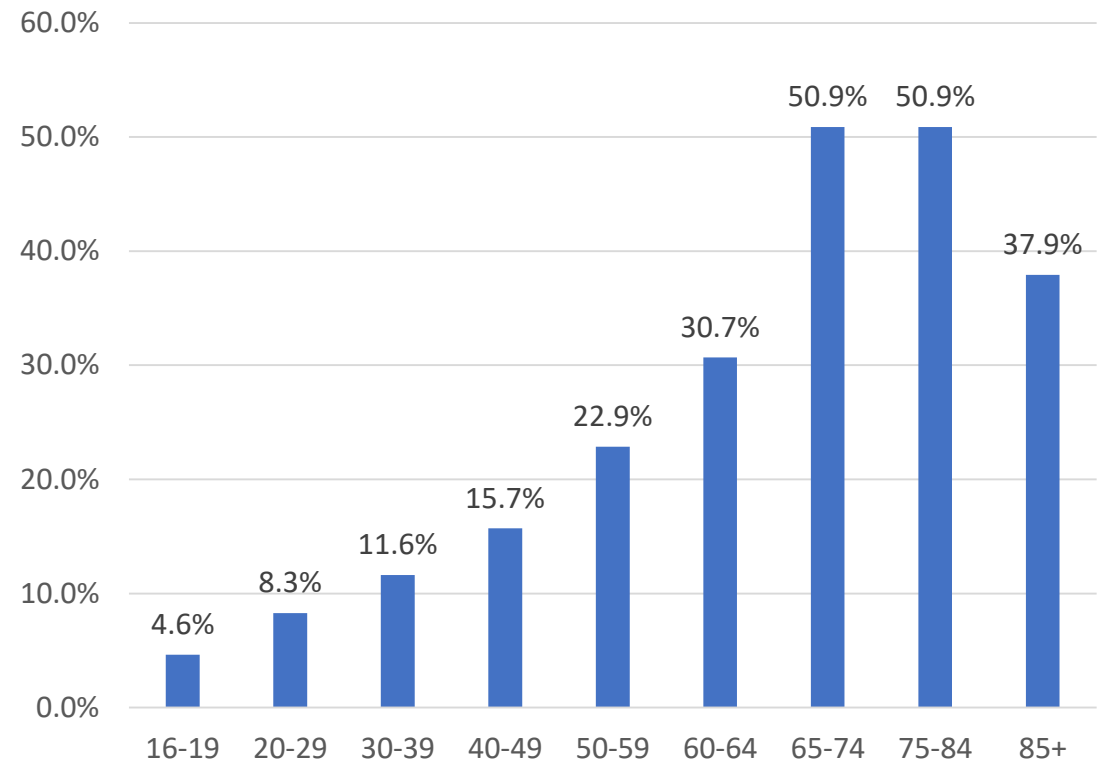
# Resident Pre-registration by Age

By population size, a higher percentage of seniors have registered, while less than 20% of those under age 50 have registered to be vaccinated.

### Pre-registered by Age



### Percent Pre-registered by Population

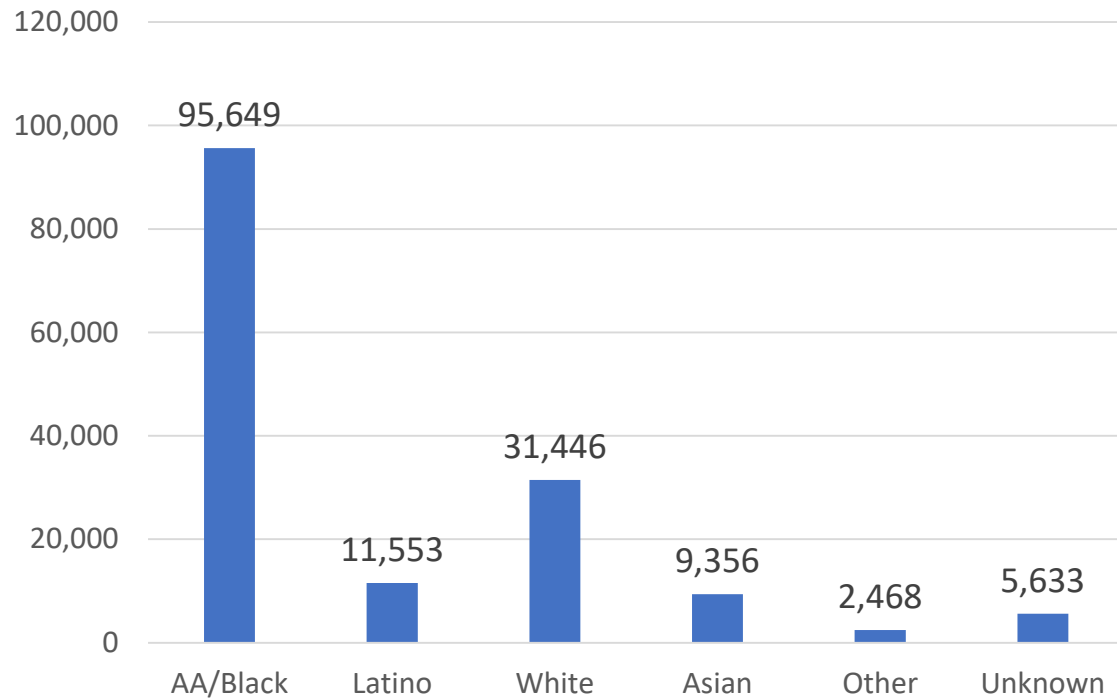


Data as of 3/11/21

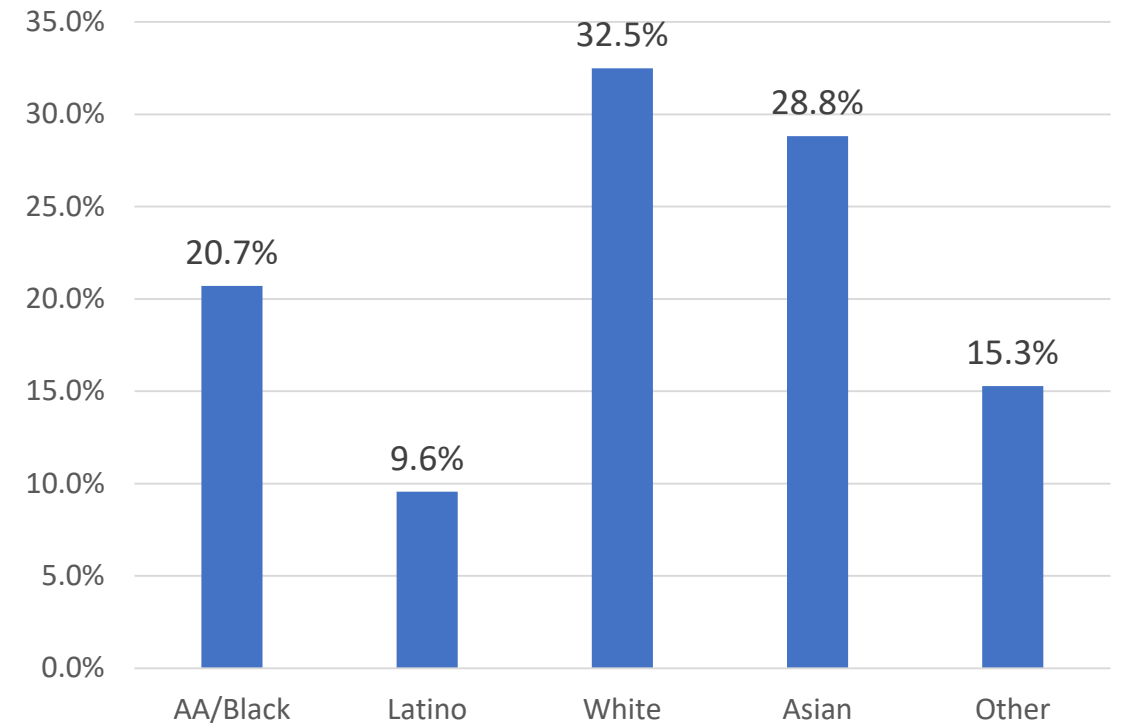
# Residents Pre-registration by Race/Ethnicity

Approximately one-third of white residents have pre-registered, followed by more than one-fourth of Asian residents. Latino residents have had the lowest pre-registration in the county at only 9.6%

### Residents Pre-registered by Race/Ethnicity



### Percent Pre-registered by Population



Data as of 3/11/21

# Health Department COVID-19 Vaccinations

---

# Health Department Vaccination Coordination

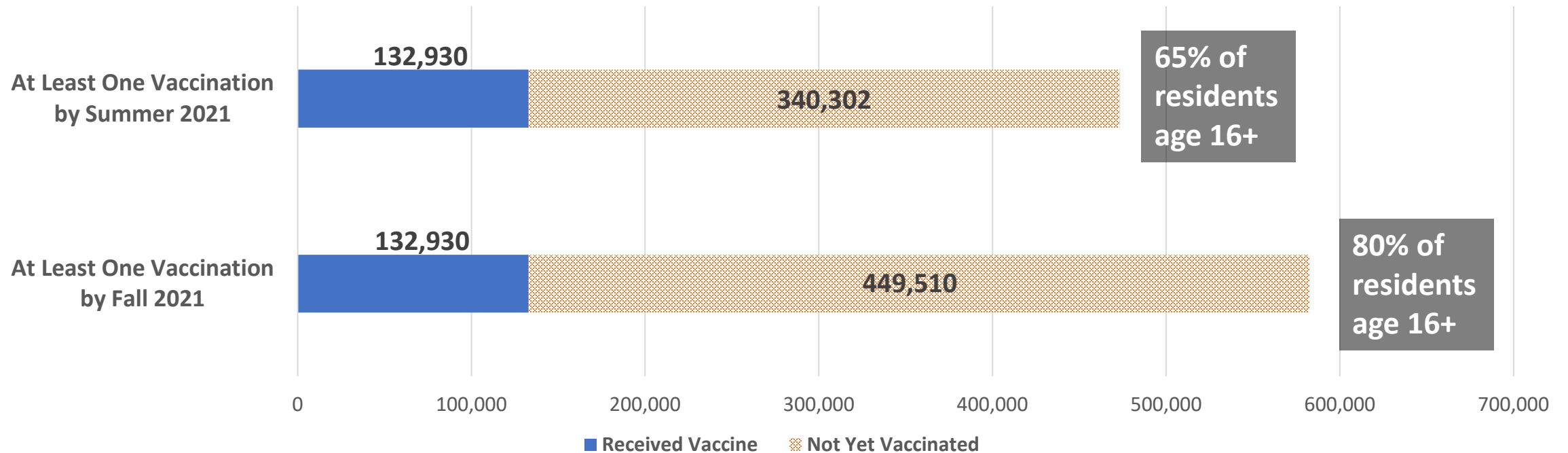
The Health Department has ongoing coordination with partners in the county to ensure our Phase 1 residents and workers are receiving vaccines, including:

- **Luminis**
  - Dialysis Center Staff
  - Potential partnership at location at PGCC
  - Working with DFS to provide vaccinations at senior living complexes
  - Transferred a total of 2,000 vaccines to be used for county residents and school staff
  - Provided 20,000 from pre-registration list
- **UM CRH**
  - MCO Healthcare Staff
- **MedStar**
  - Provided list of approximately 1,000 residents from pre-registration list to vaccinate
  - Transferred a total of 500 doses of vaccine to be used for residents
- **Walmart**
  - Sent list of 1,100 residents from pre-registration for vaccination at Clinton location
- **Giant**
  - Working closely with DFS to provide vaccinations at senior living complexes
- **MDH Six Flags**
  - Provided 36,100 from pre-registration list to date
- **Safeway**
  - Suggested store locations for equitable distribution in the county
- **Kaiser Permanente**
  - Supporting PGCCPS vaccinations
- **UMMS, UMD**
  - Working with the county to potentially open a vaccination site in College Park
- **The Arc Prince George's County**
  - Provided list of 200 individuals with disabilities for vaccination and a list of DDA facilities and contact information to coordinate vaccinations, and list of 350 individuals over the age of 75 years for vaccination.
- **CVS**
  - Working closely with DFS to provide vaccinations at senior living complexes

As of 3/11/21

# Resident Vaccinations

There are an estimated 728,050 residents ages 16 and older (the minimum age for vaccination). Our goal is to have 473,232 residents vaccinated by this summer, or 65% of this population and 80% by this fall. To date, **132,930 residents have received at least one vaccination (28.1% of our summer goal)**. We anticipate revising our goal as new vaccines become available that include younger populations.

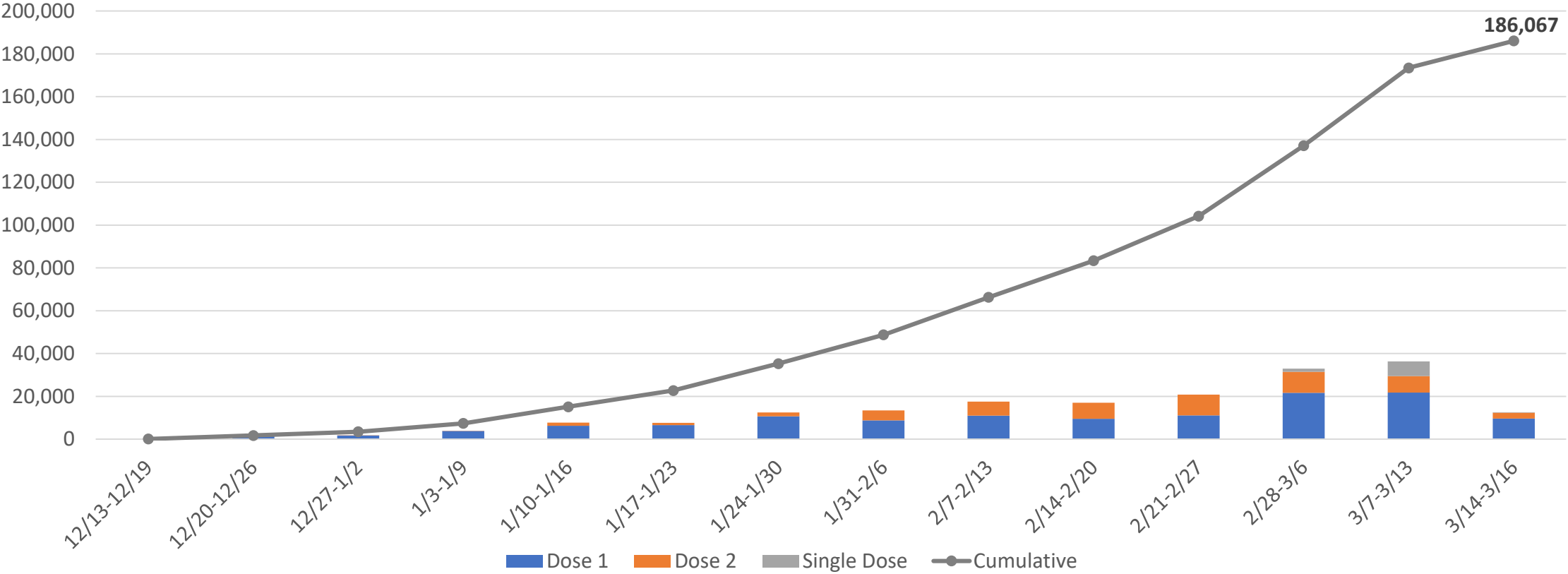


Data as of 3/16/21



# Vaccinations by Date Received for Residents

Over 186,000 vaccines have been provided to 132,903 county residents (53,1317 residents have received their second vaccination) in Maryland. We reached over 36,000 resident vaccinations last week for a new high, which includes approximately 6,800 of the recently approved single-dose vaccinations.

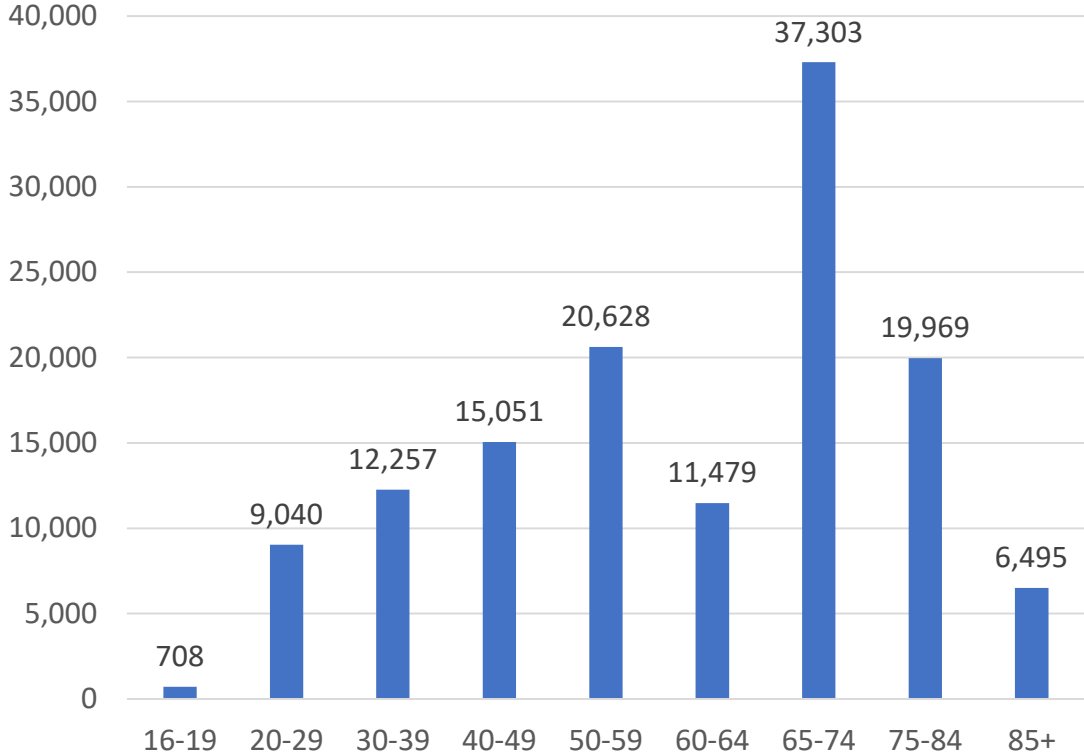


Data as of 3/16/21

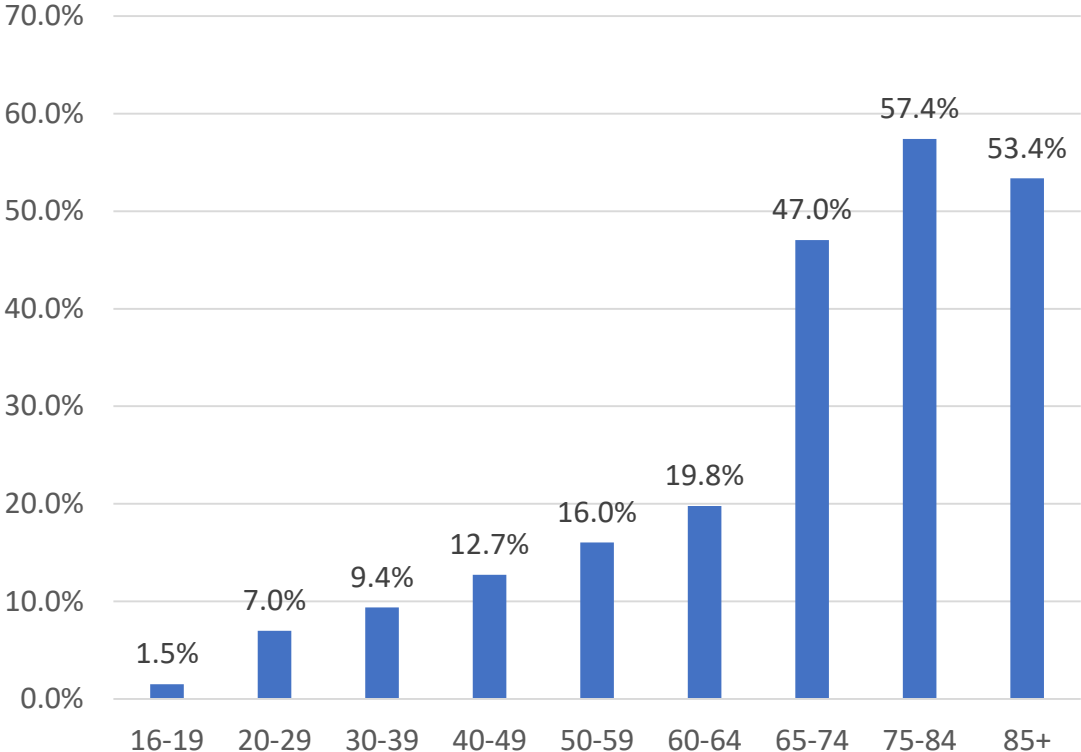
# Residents Vaccinated by Age

Over 57% of residents ages 75-84 years have received at least one dose of vaccine in the county, followed by 53% of those ages 85 and older and nearly half of residents ages 65-74 years.

Residents Vaccinated by Age



Percent Vaccinated by Population



Data as of 3/16/21