

ITEM:

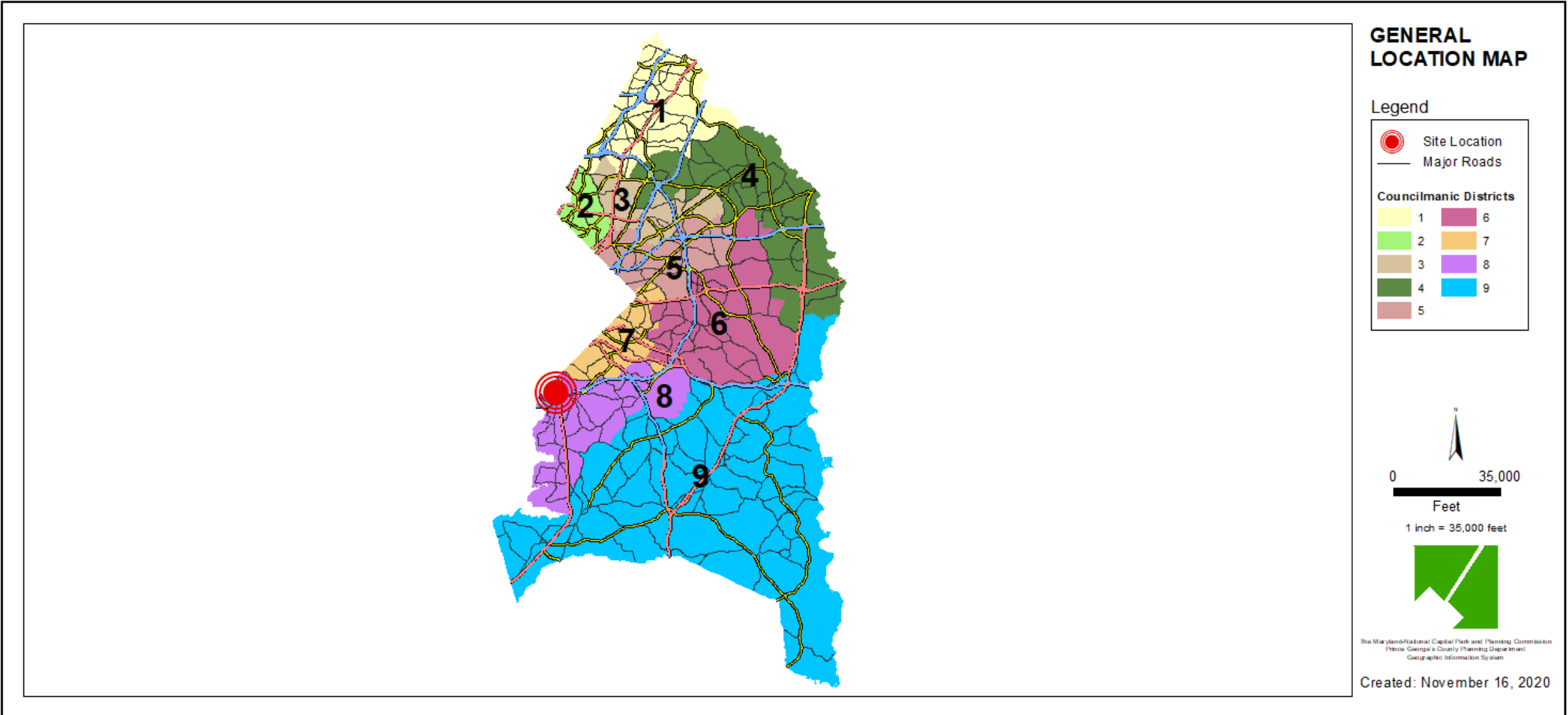
CASE: A-10055

NATIONAL VIEW

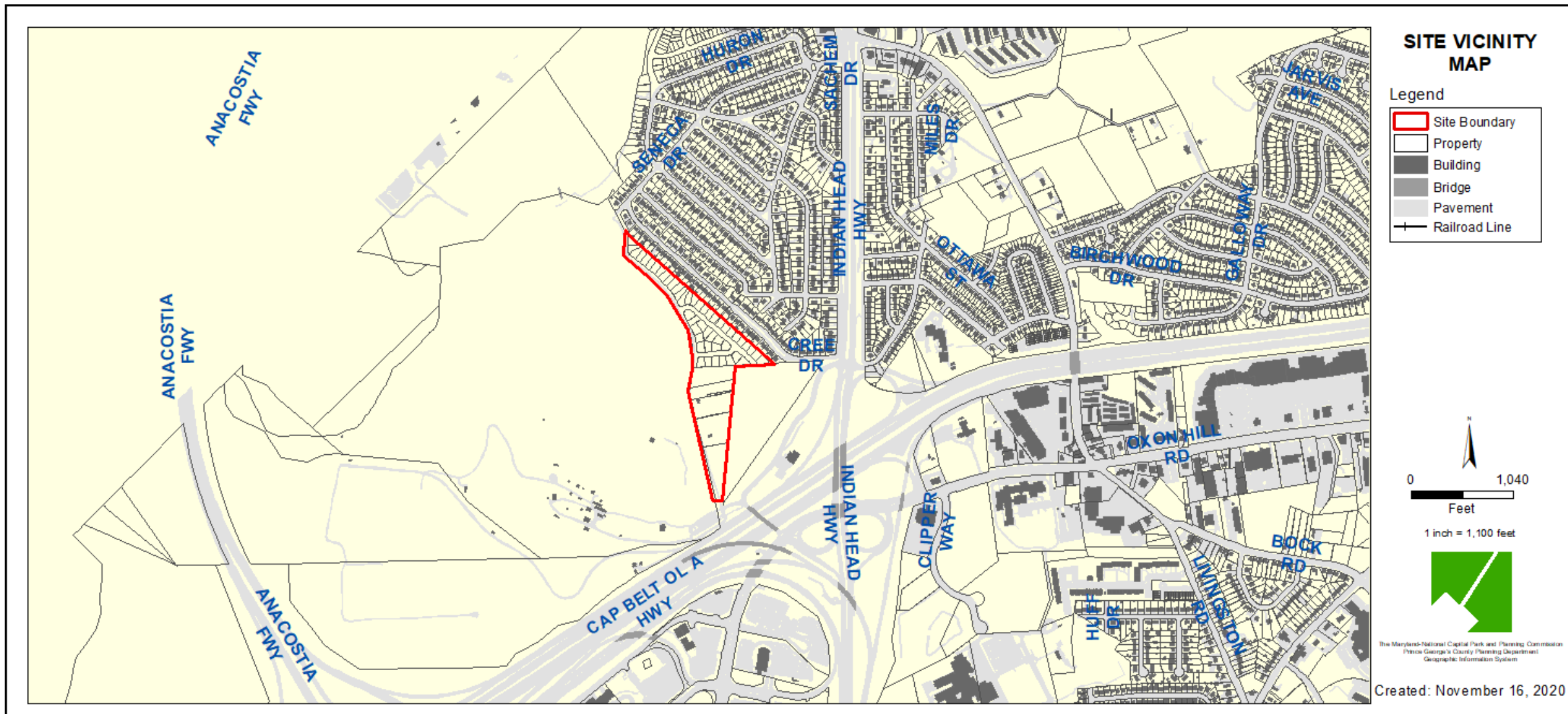
THE PRINCE GEORGE'S COUNTY PLANNING DEPARTMENT



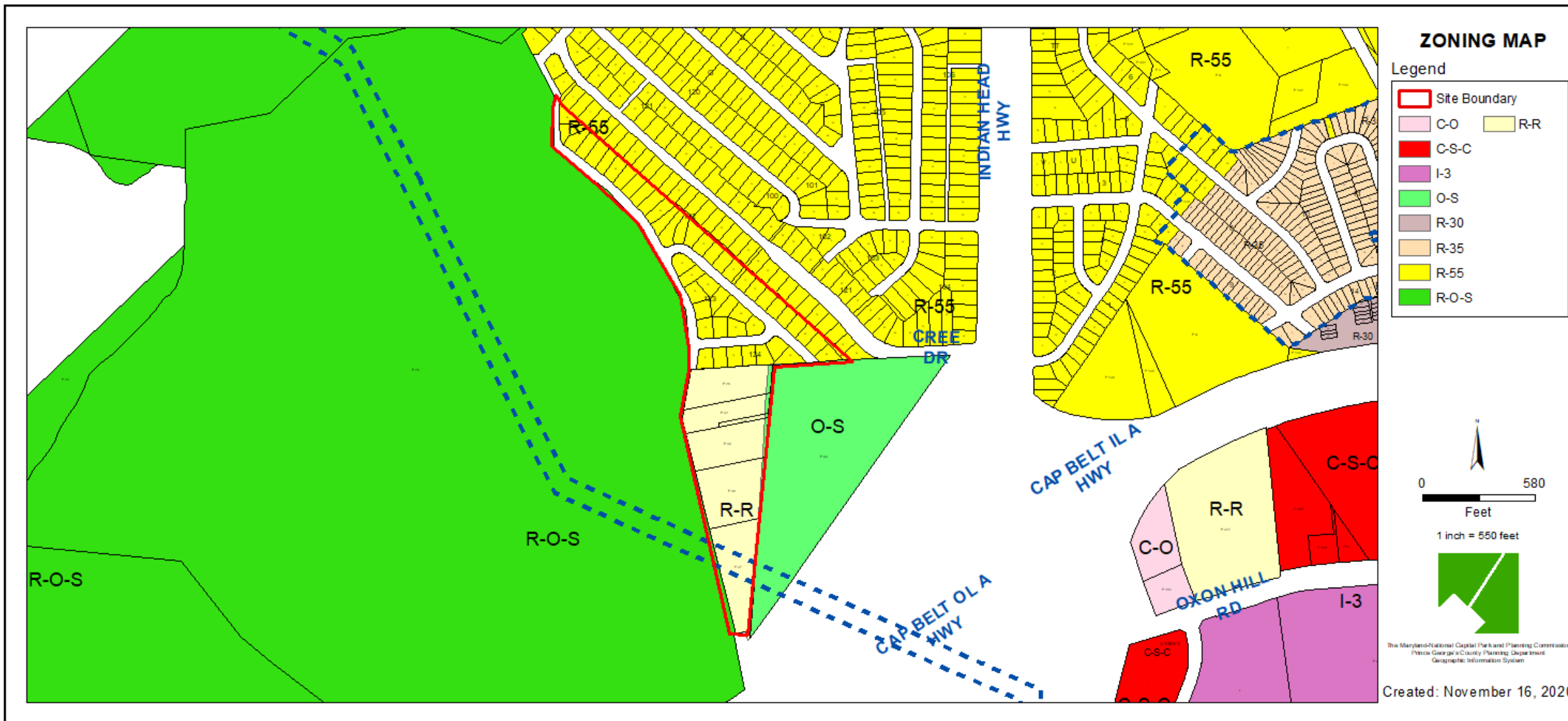
GENERAL LOCATION MAP



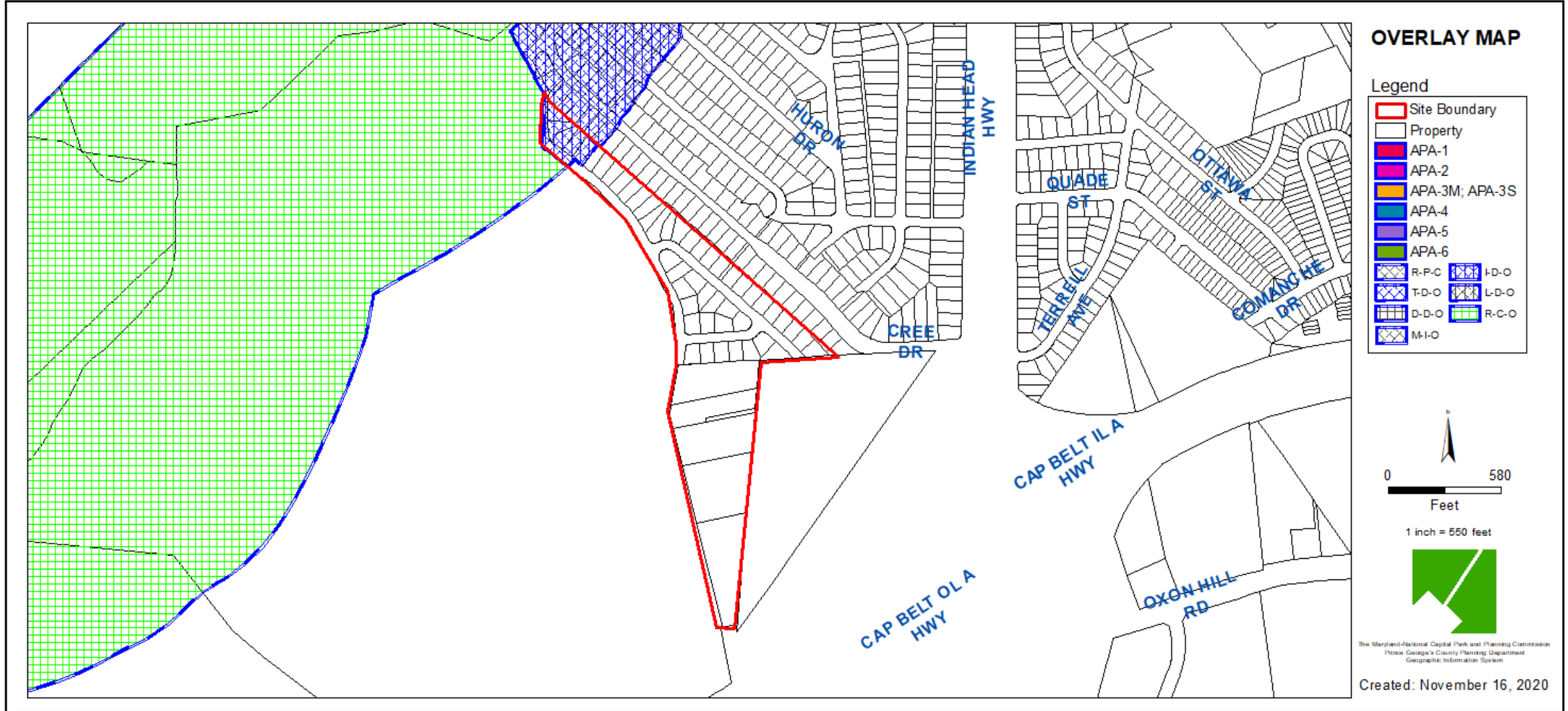
SITE VICINITY



ZONING MAP



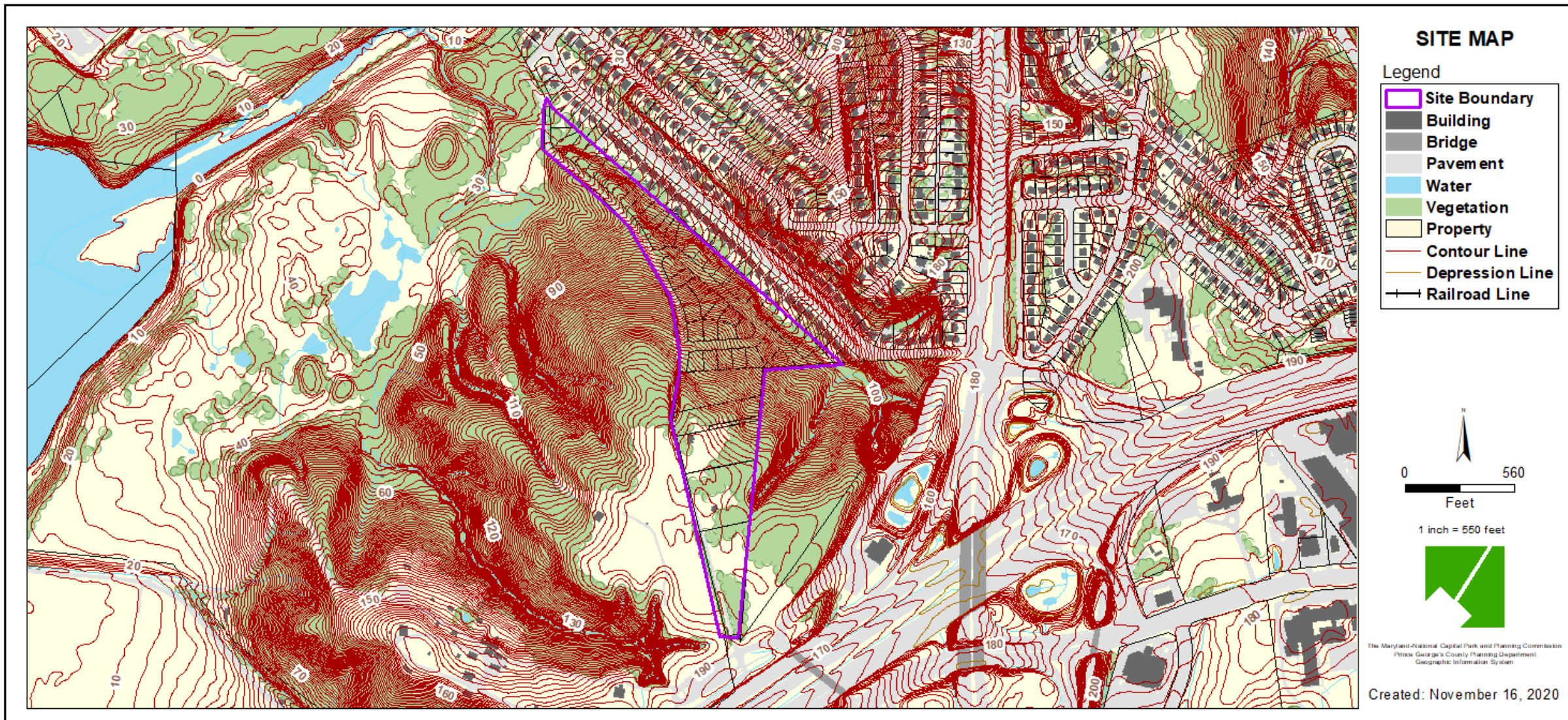
OVERLAY MAP



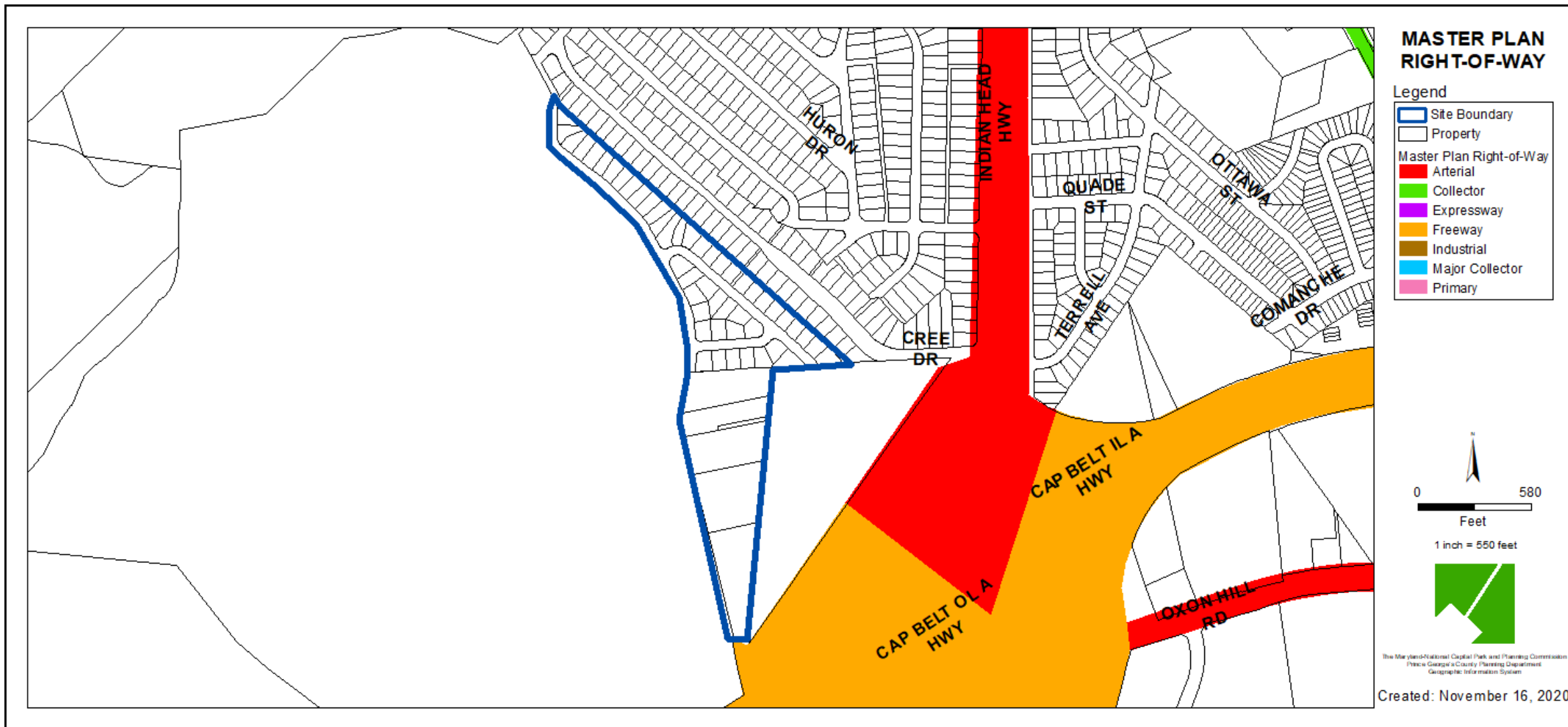
AERIAL MAP



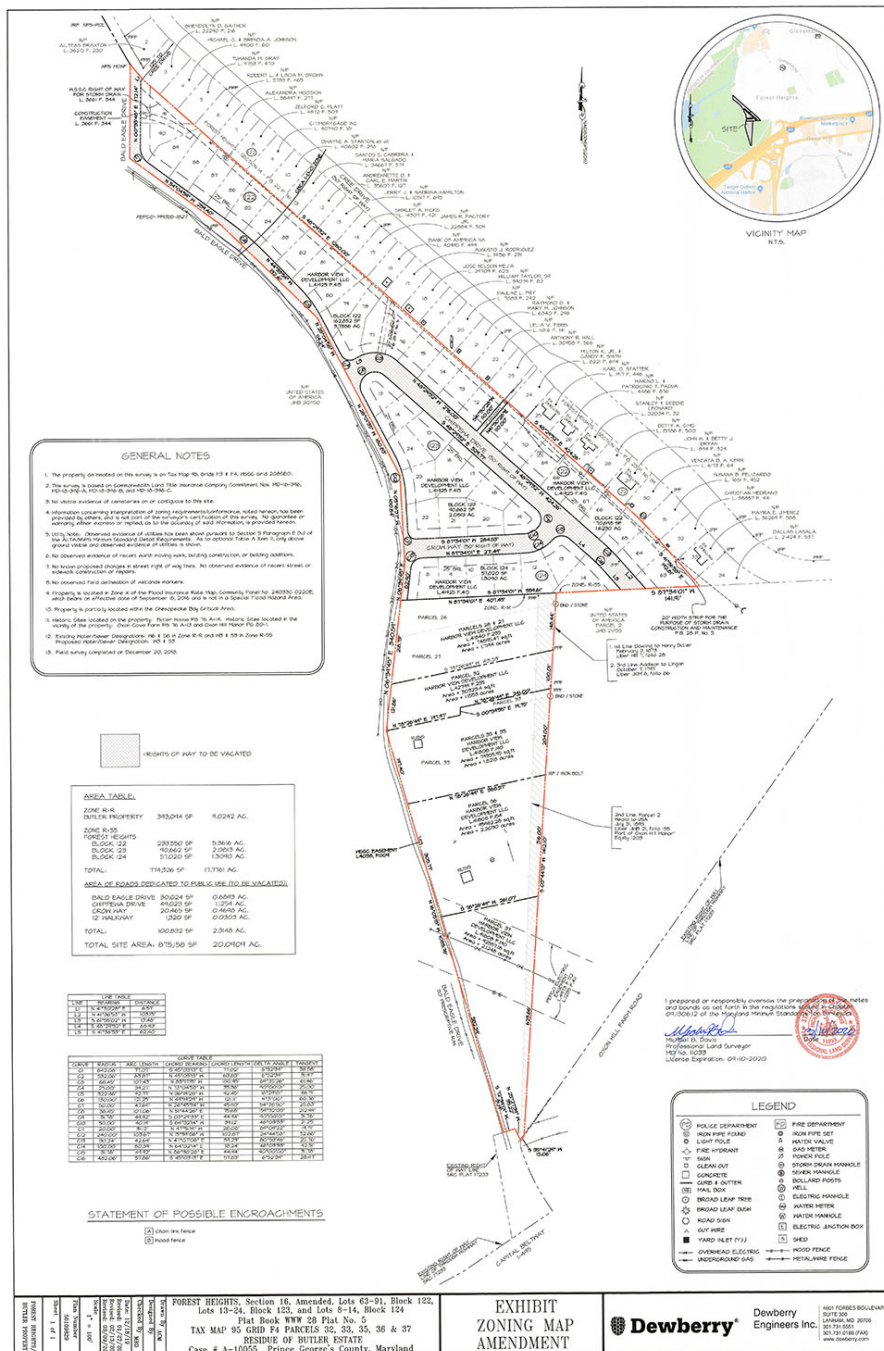
SITE MAP



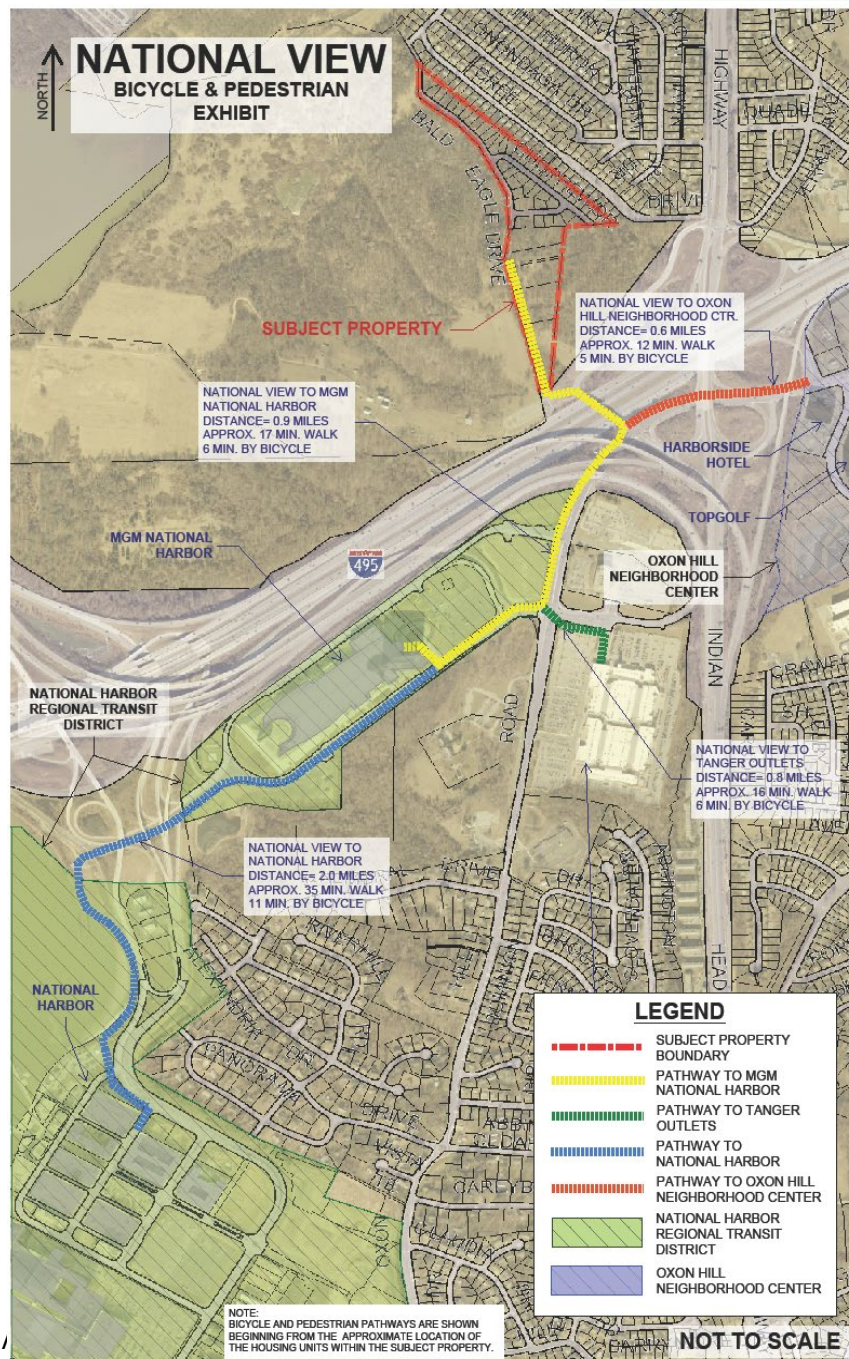
MASTER PLAN RIGHT-OF-WAY MAP



ZONING MAP



APPLICANT'S BICYCLE & PEDESTRIAN EXHIBIT



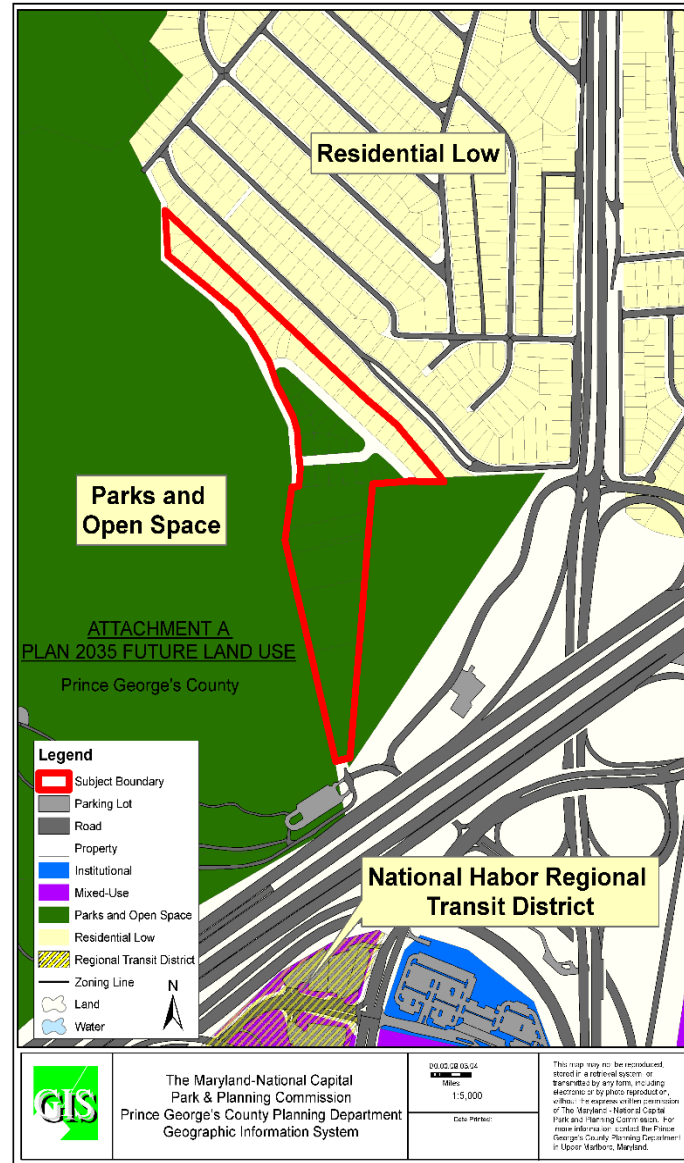
APPLICANT'S BICYCLE AND PEDESTRIAN CONNECTIVITY EXHIBIT



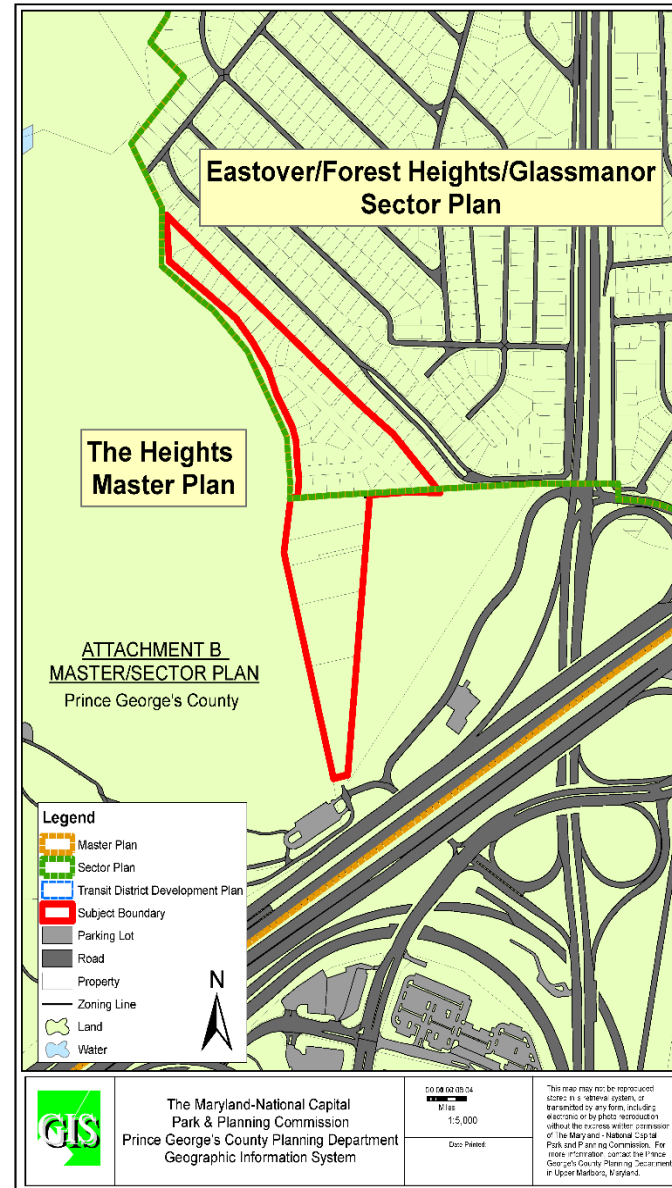
NOT TO SCALE



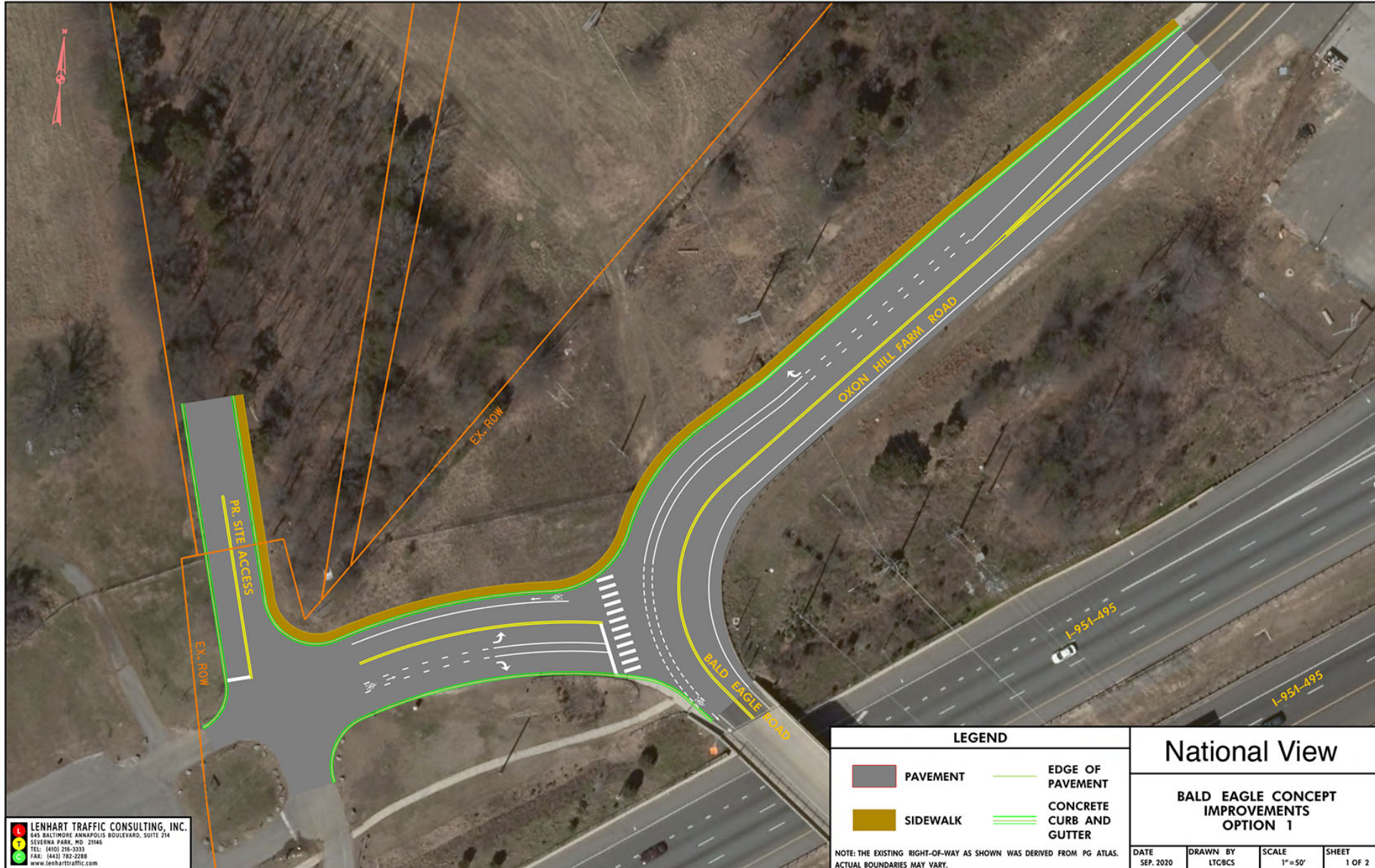
PLAN 2035 FUTURE LAND USE MAP



SECTOR & MASTER PLAN AREA MAP



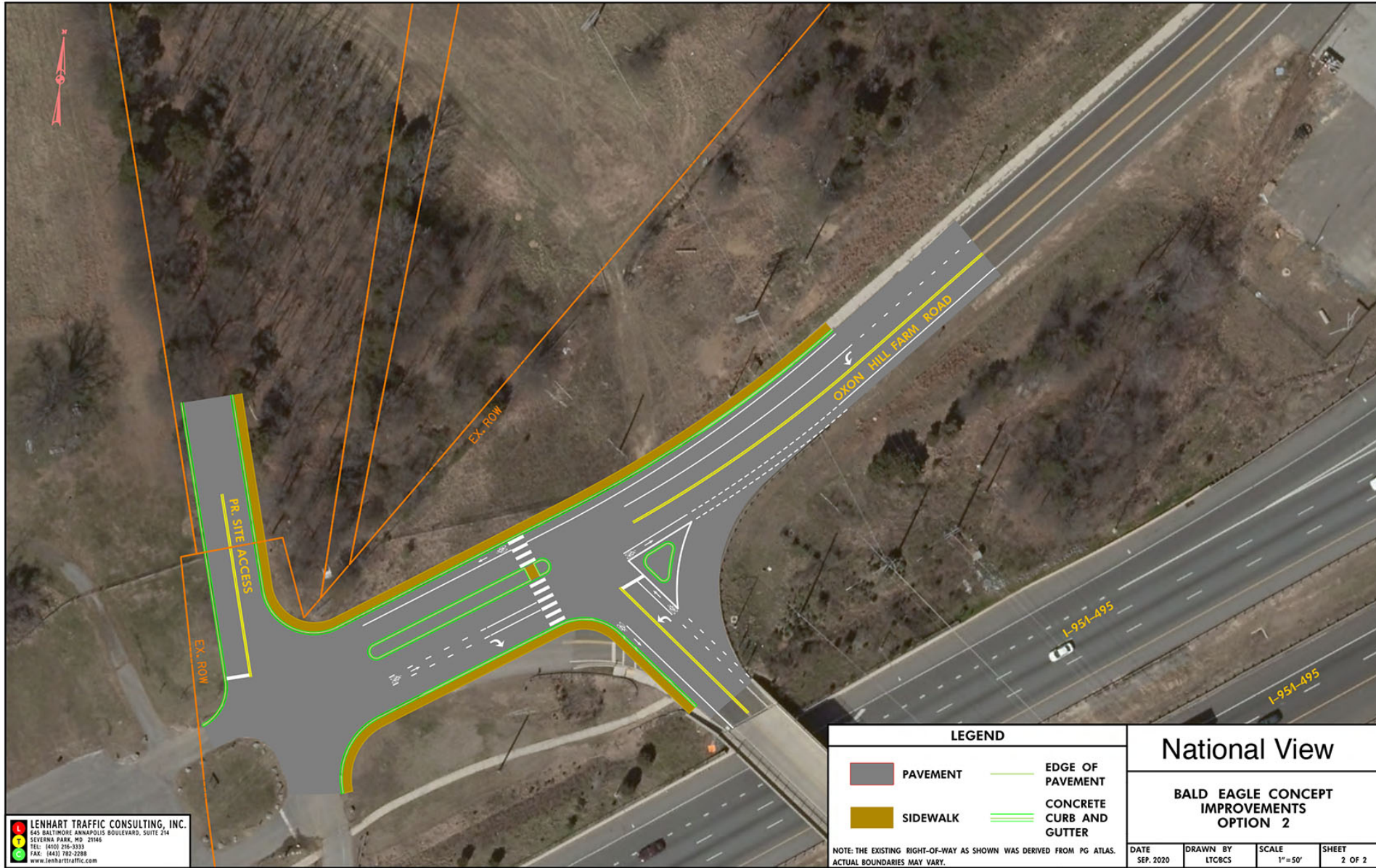
APPLICANT'S ROAD IMPROVEMENT OPTION 1



LENHART TRAFFIC CONSULTING, INC.
 640 BALTIMORE ANNAPOLIS BOULEVARD, SUITE 214
 SEVERNA PARK, MD 21146
 TEL: (410) 216-3333
 FAX: (410) 782-3288
 www.lenharttraffic.com



APPLICANT'S ROAD IMPROVEMENT OPTION 2



LENHART TRAFFIC CONSULTING, INC.
 645 BALTIMORE ANNAPOLIS BOULEVARD, SUITE 214
 SEVERNA PARK, MD 21446
 TEL: (410) 296-3333
 FAX: (410) 782-2288
 www.lenharttraffic.com

