

ITEM:

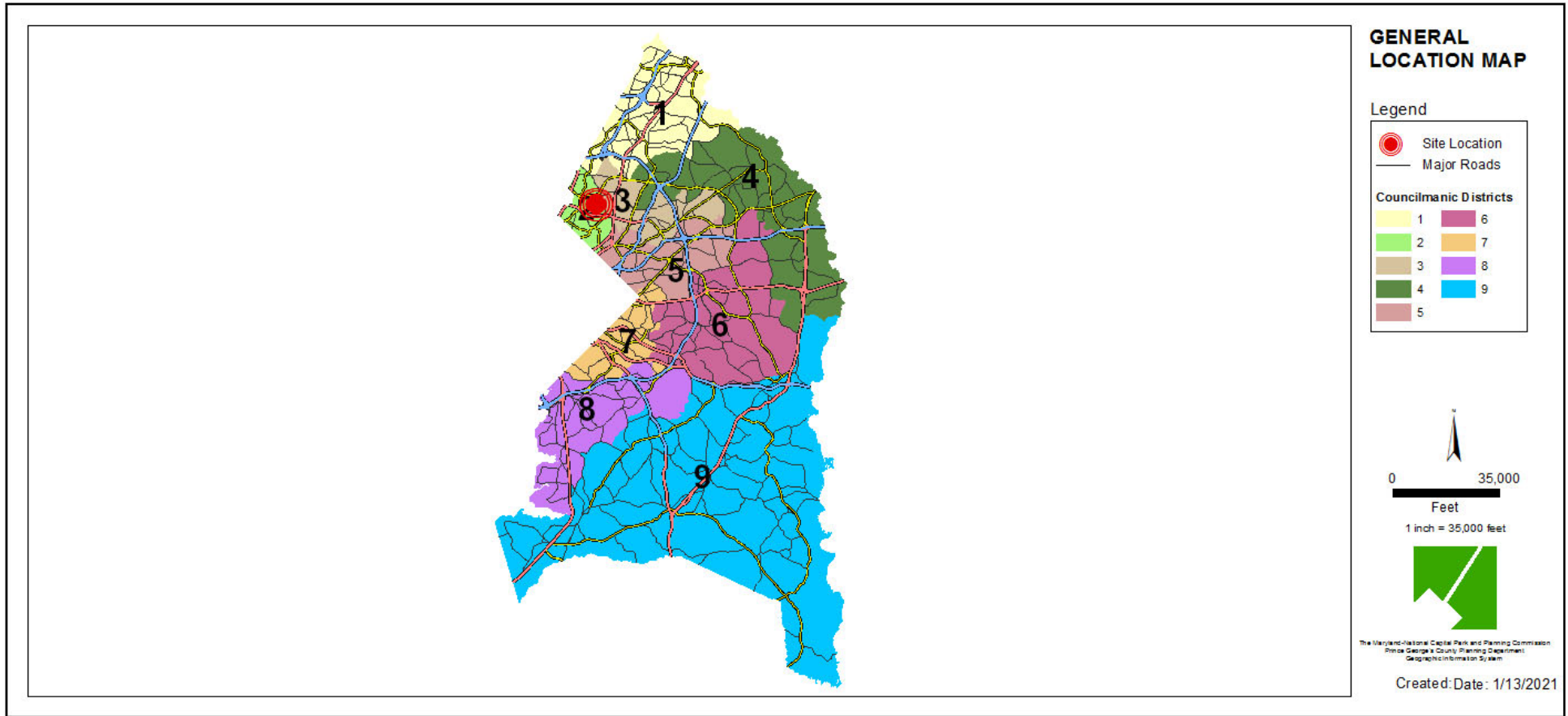
CASE: CSP-20007

CLAY PROPERTY

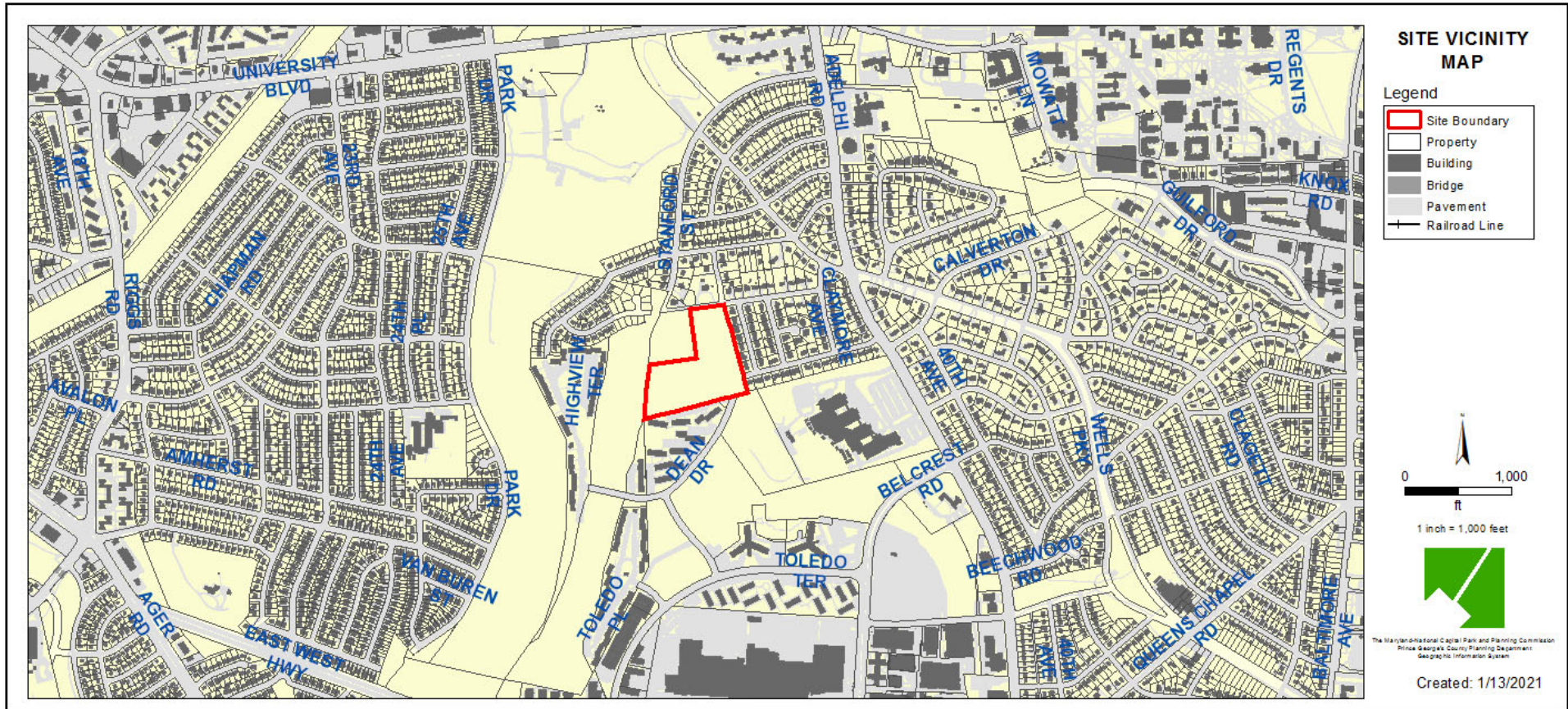
THE PRINCE GEORGE'S COUNTY PLANNING DEPARTMENT



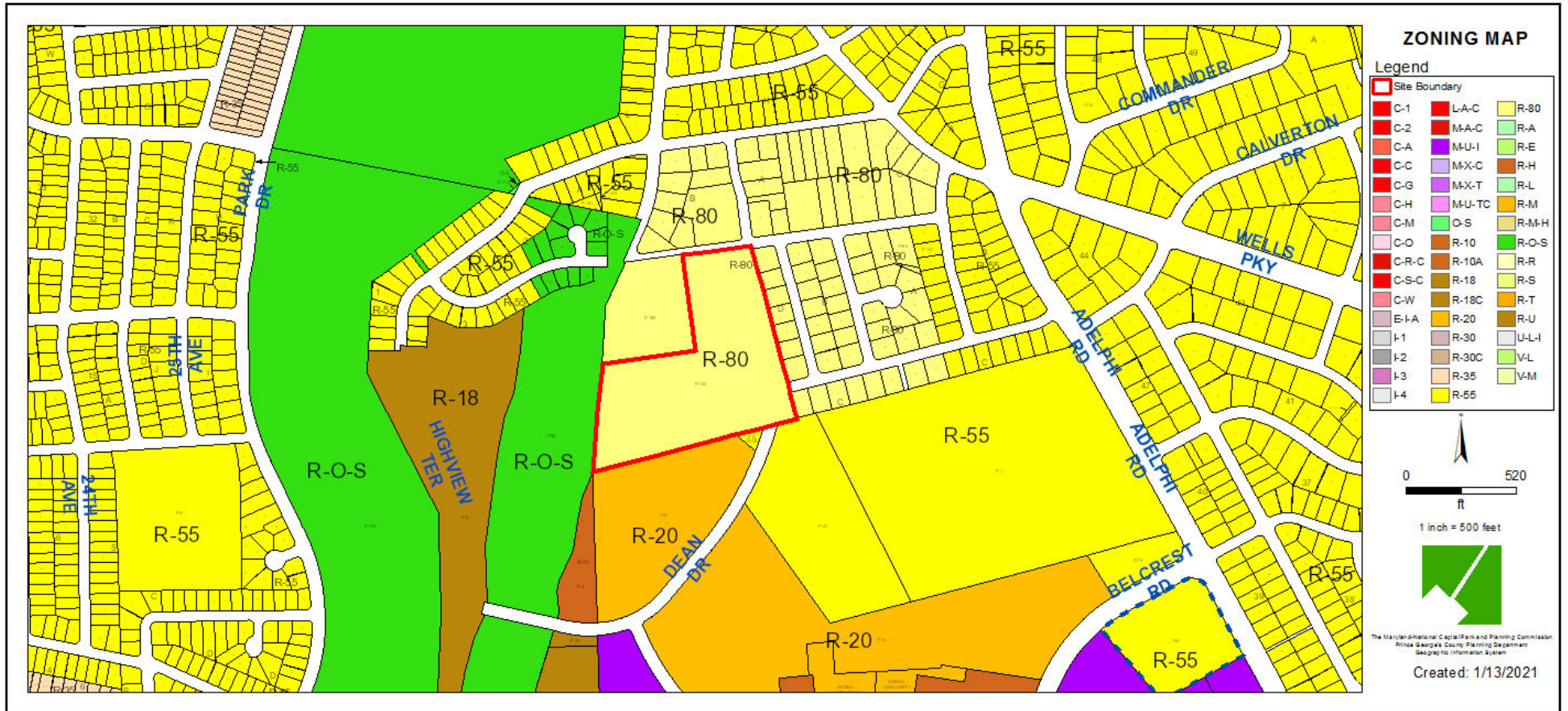
GENERAL LOCATION MAP



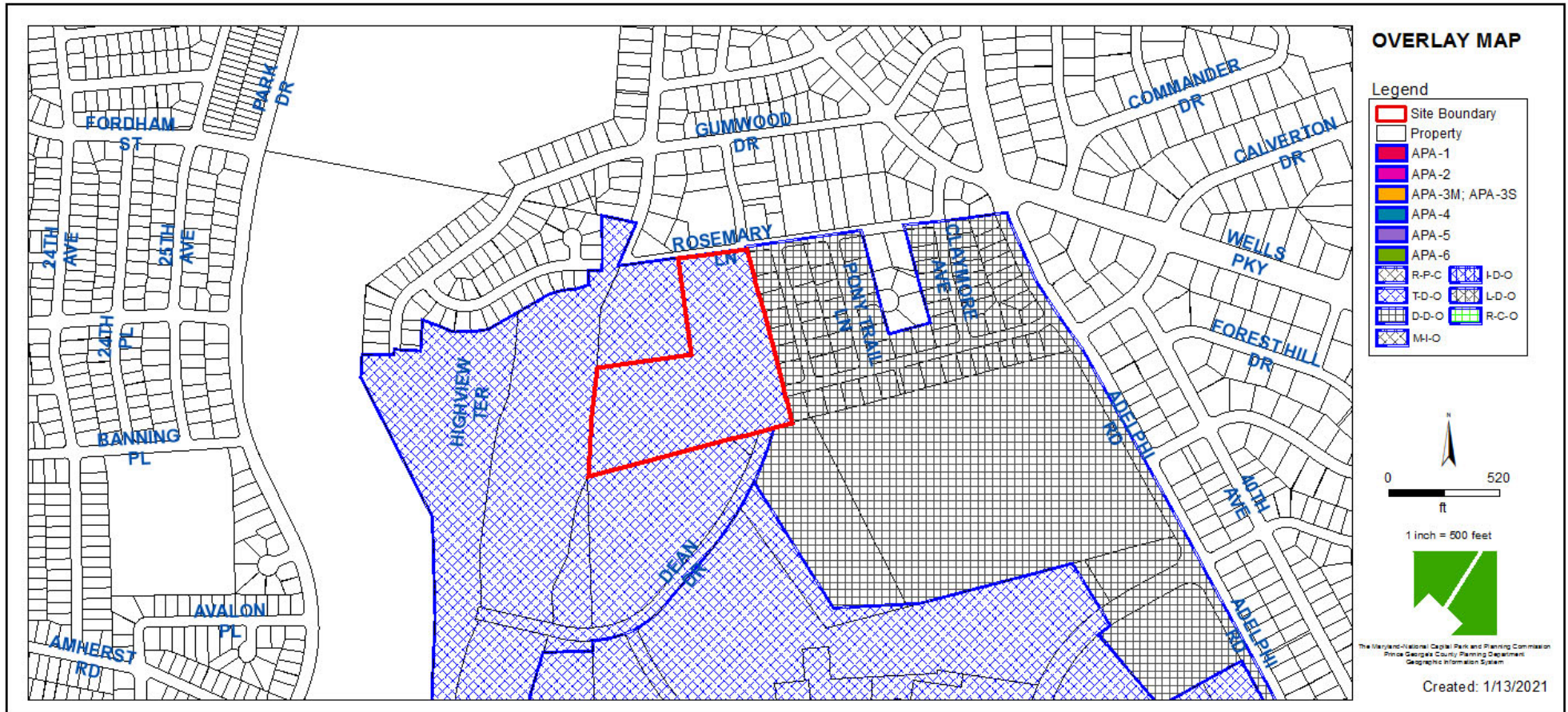
SITE VICINITY



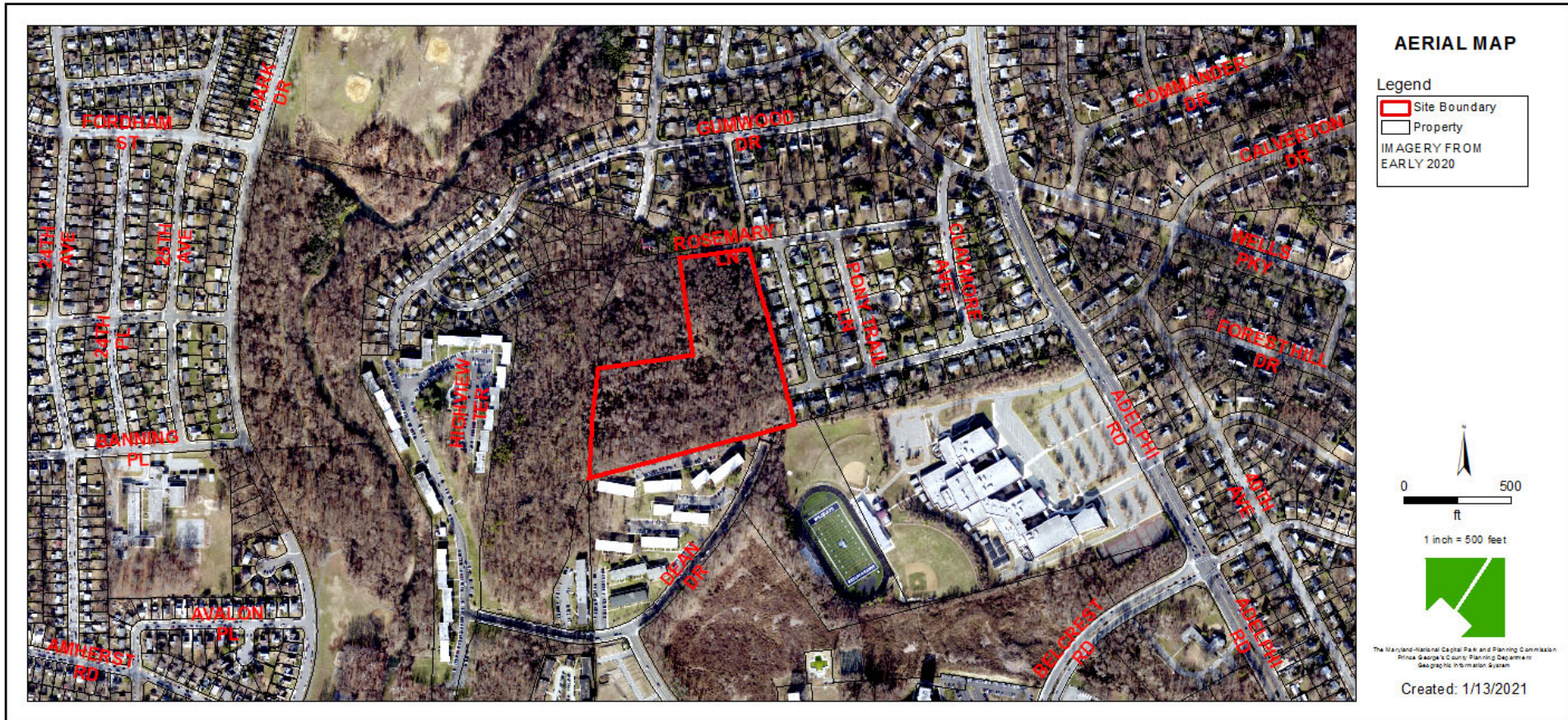
ZONING MAP



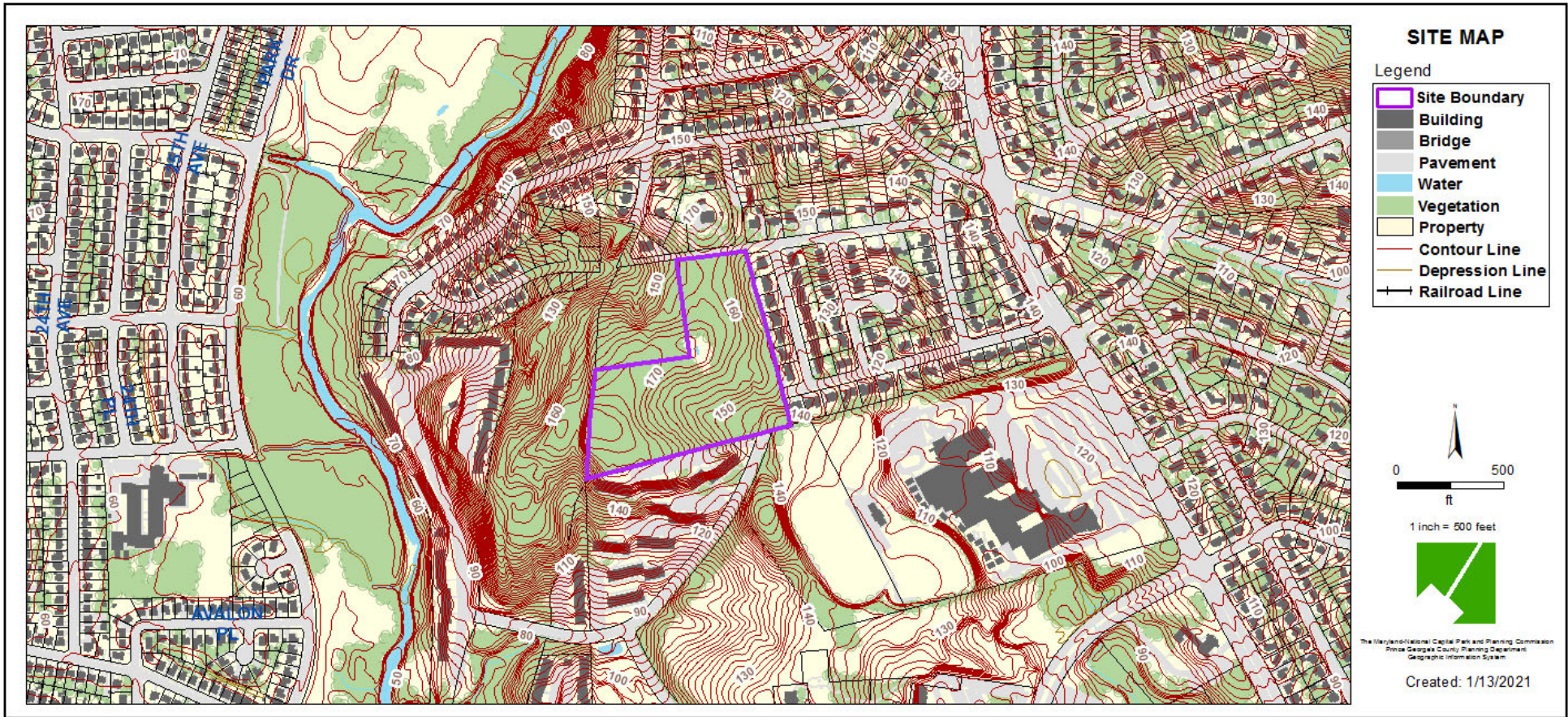
OVERLAY MAP



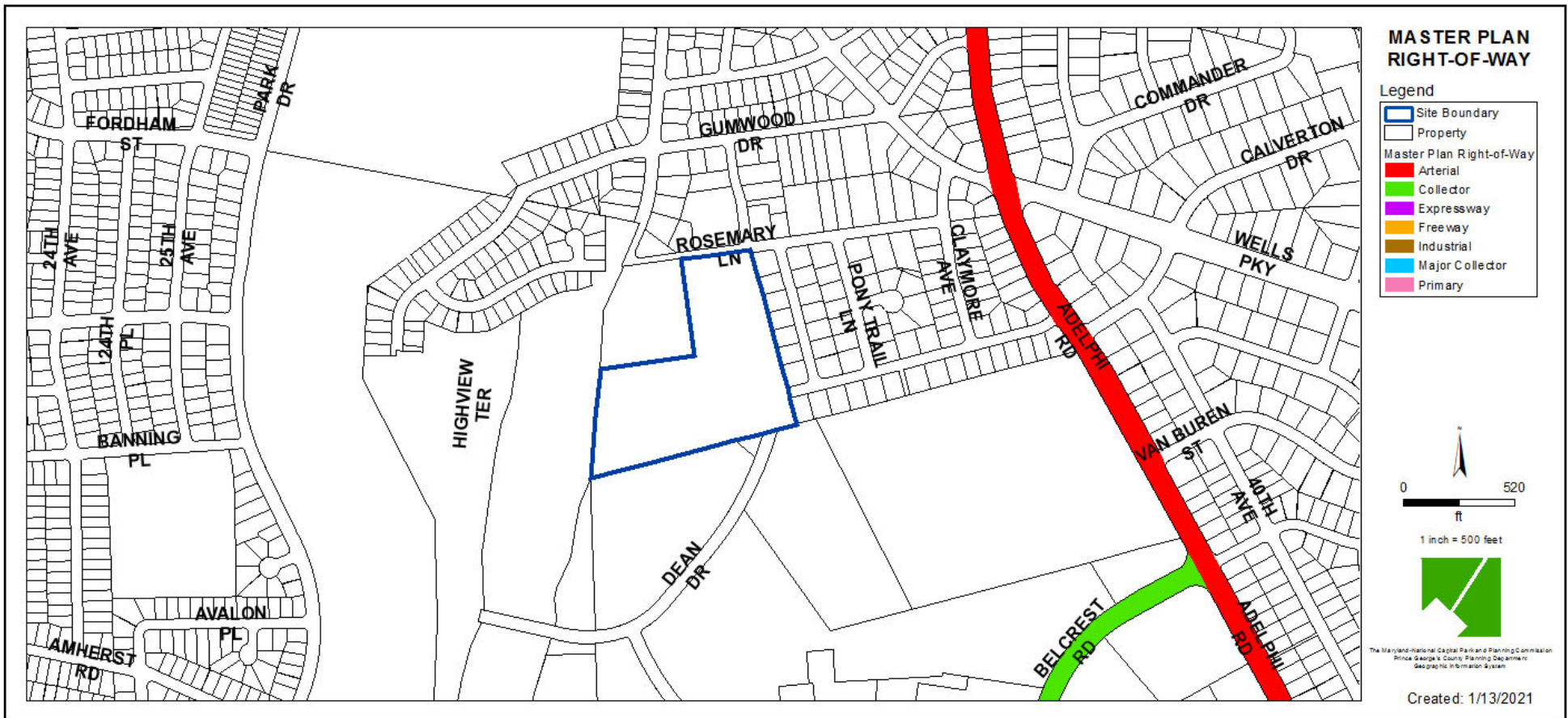
AERIAL MAP



SITE MAP



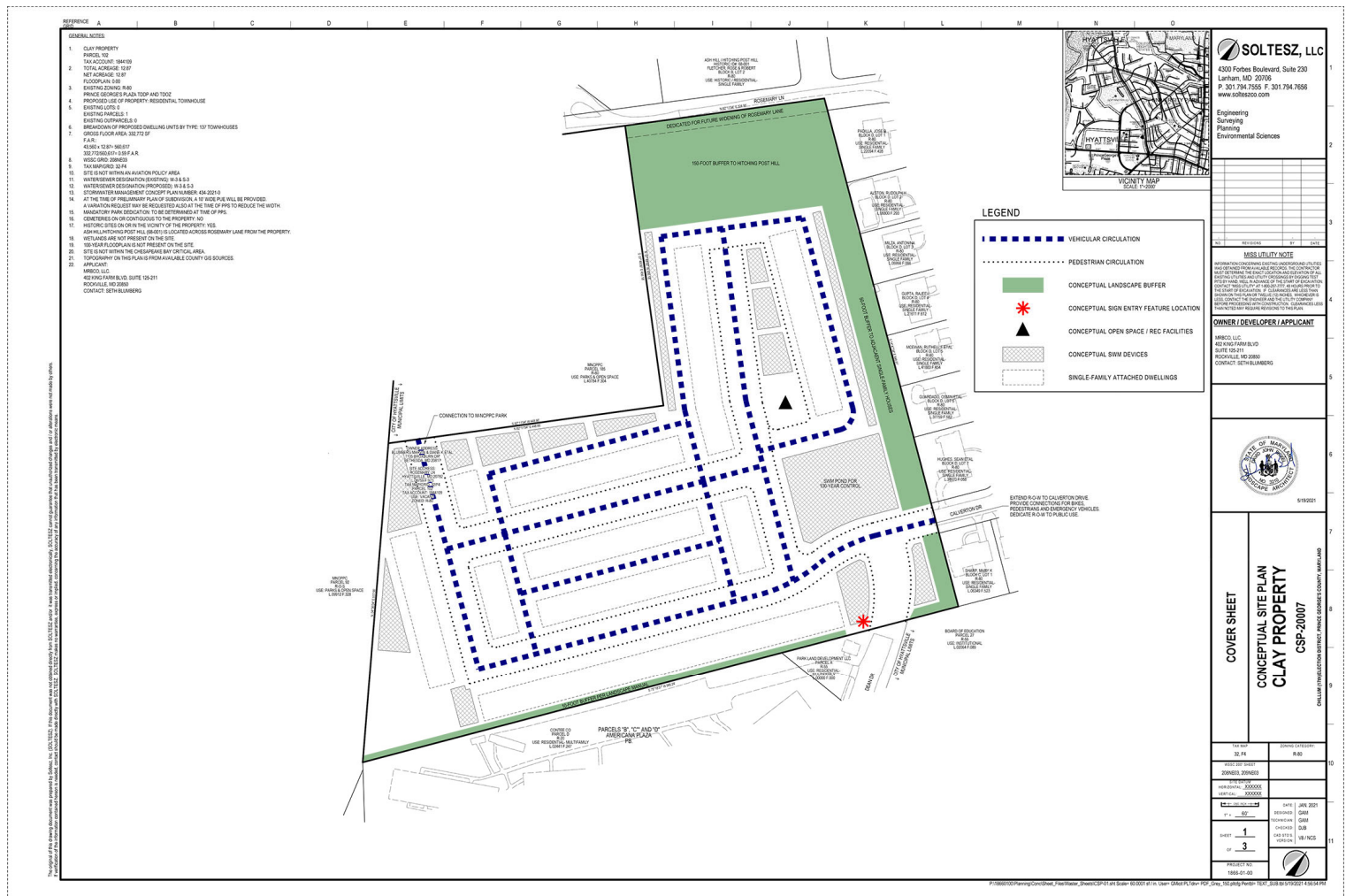
MASTER PLAN RIGHT-OF-WAY MAP



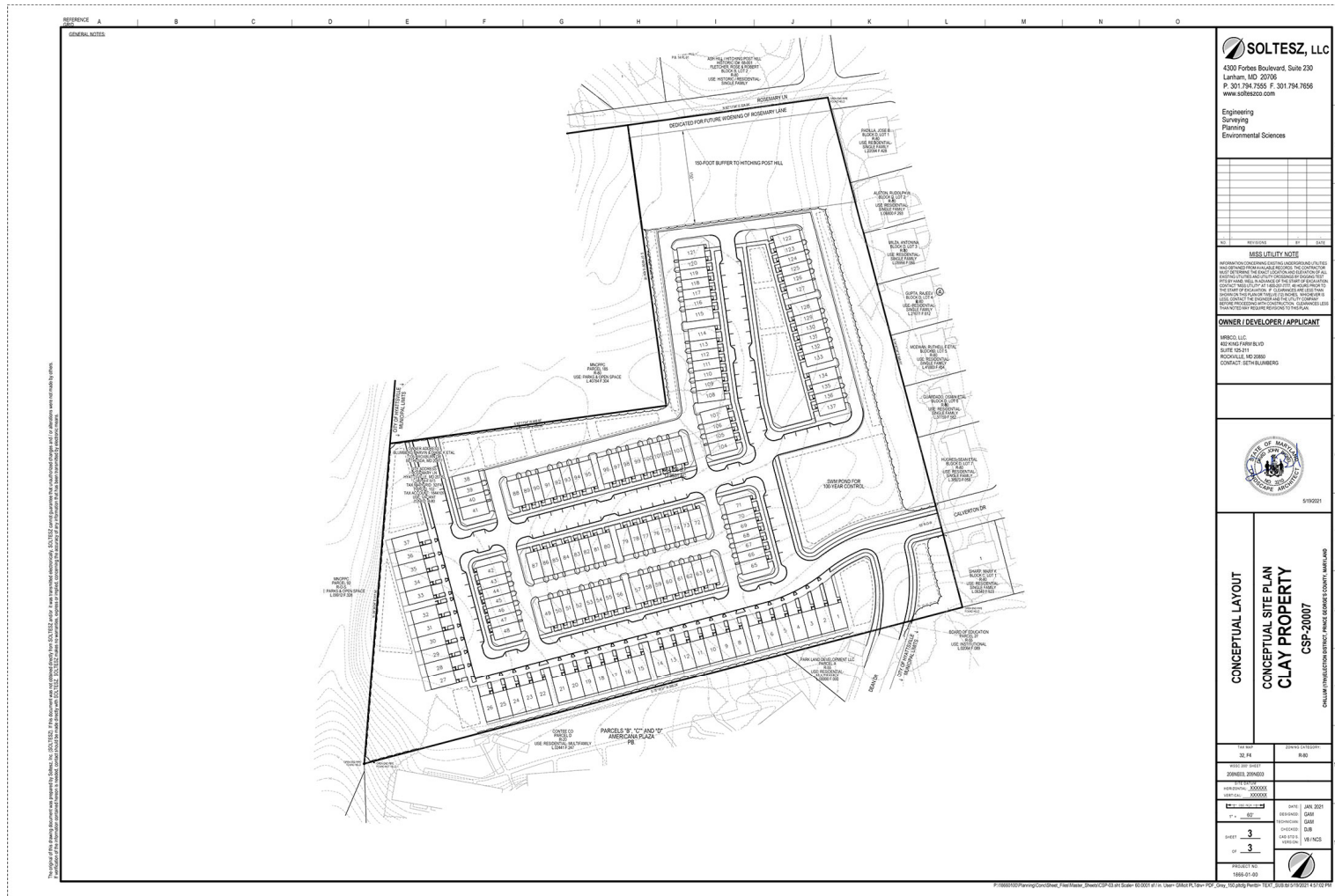
BIRD'S-EYE VIEW WITH APPROXIMATE SITE BOUNDARY OUTLINED



CONCEPTUAL SITE PLAN

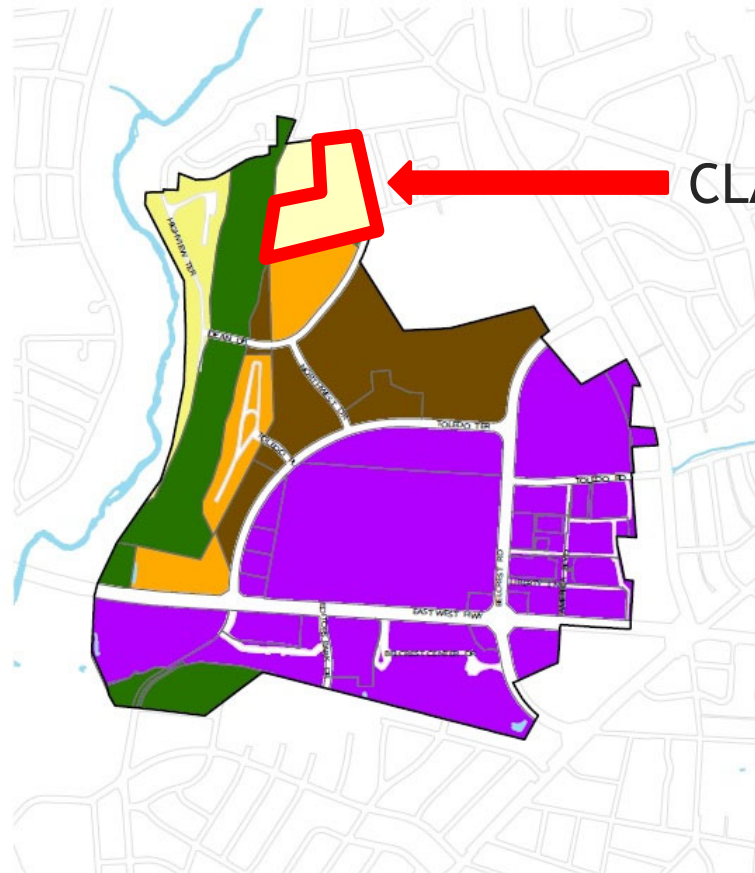


CONCEPTUAL LAYOUT PLAN

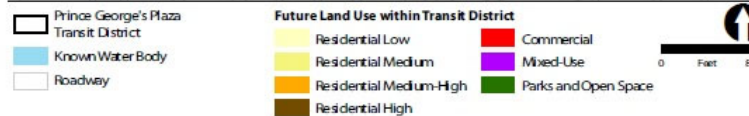


PRINCE GEORGE'S PLAZA TDDP FUTURE LANE USE MAP











Map 15: Future Land Use

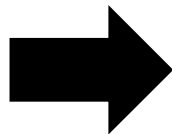


CLAY PROPERTY



PRINCE GEORGE'S PLAZA TDDP FUTURE LANE USE CATEGORIES

Color	Designation	Description	Density Per Acre
	Mixed-Use	Areas of various residential, commercial, employment, and Institutional uses. Residential uses may include a range of unit types. Mixed-use areas may vary with respect to their dominant land uses, i.e. commercial uses may dominate in one mixed-use area, whereas residential uses may dominate in another.	See Center Classification Table in Plan 2035.
	Commercial	Retail and business areas, including employment uses such as office and service uses. A range of services are provided at the neighborhood to regional level. New commercial areas have access to multimodal transportation options.	N/A
	Industrial/ Employment	Manufacturing and industrial parks, warehouses and distribution. May include other employment, such as office and service uses.	N/A
	Institutional	Uses such as military installations, hospitals, sewage treatment plants, and schools.	N/A
	Residential High	Residential areas exceeding 20 dwelling units per acre. Mix of dwelling unit types, including apartments.	(>20)
	Residential Medium-High	Residential areas between eight and 20 dwelling units per acre. Mix of dwelling unit types, including apartments.	(>8 and <=20)
	Residential Medium	Residential areas between 3.5 and 8 dwelling units per acre. Primarily single-family dwellings (detached and attached).	(>3.5 and <=8)
	Residential Low	Residential areas up to 3.5 dwelling units per acre. Primarily single-family detached dwellings.	(>.5 and <=3.5)
	Rural and Agricultural	Low-density residential uses with areas of agricultural and forestry production. Agricultural land (cropland, pasture, farm fields), forest, and very low-density residential.	(<=.5)
	Parks and Open Space	Parks and recreation areas, publicly-owned open space (federal, state, county, municipal, and M-NCPPC), and privately-owned	N/A



DC 9/20/20