

Countywide Drainage Complaints February 2018 thru February 2021

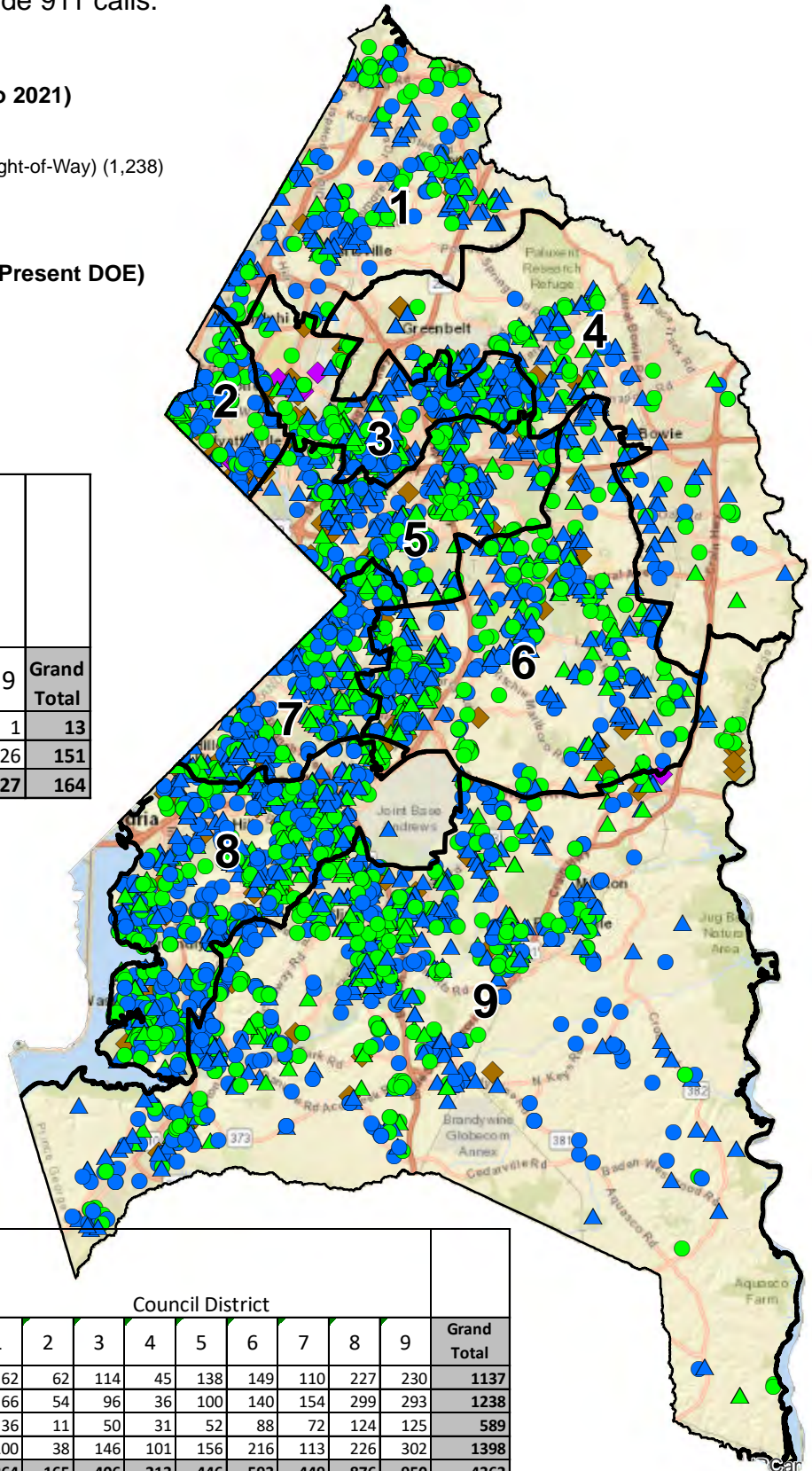
Note: This map only contains service requests in Motorola. Does not include 911 calls.

311 Drainage Complaints (FEB 2018 to 2021)

- Flooding (Yard/Private Property) (1,137)
- Flooding and Drainage Issues (Public Right-of-Way) (1,238)
- ▲ Sinkholes (Private Property) (589)
- ▲ Sinkholes (Public Right-of-Way) (1,398)

SWM Flood Control Projects (1993 to Present DOE)

- ◆ In Progress (13)
- ◆ Completed (151)
- Council Districts



SWM Flood Control Projects (1993 to present DOE)	Council District									Grand Total
	1	2	3	4	5	6	7	8	9	
In Progress		2	7		1			2	1	13
Completed	6	14	16	6	16	21	13	33	26	151
Grand Total	6	16	23	6	17	21	13	35	27	164

Service Type 311 Drainage Complaints (FEB 2018 to 2021)	Council District									Grand Total
	1	2	3	4	5	6	7	8	9	
Flooding (Yard/Private Property)	62	62	114	45	138	149	110	227	230	1137
Flooding and Drainage Issues (Public Right-of-Way)	66	54	96	36	100	140	154	299	293	1238
Sinkholes (Private Property)	36	11	50	31	52	88	72	124	125	589
Sinkholes (Public Right-of-Way)	100	38	146	101	156	216	113	226	302	1398
Grand Total	264	165	406	213	446	593	449	876	950	4362

311 Drainage Complaints by year and district

Service Type	Council District									Grand Total
	1	2	3	4	5	6	7	8	9	
2018										
Flooding (Yard/Private Property)	18	30	39	10	43	45	35	80	73	373
Flooding and Drainage Issues (Public Right-of-Way)	30	21	41	17	46	35	45	87	108	430
Sinkholes (Private Property)	24	2	23	12	24	39	27	43	65	259
Sinkholes (Public Right-of-Way)	43	14	54	47	68	60	27	85	109	507
2019										
Flooding (Yard/Private Property)	22	11	43	18	40	45	32	56	35	302
Flooding and Drainage Issues (Public Right-of-Way)	17	9	23	11	21	46	48	100	75	350
Sinkholes (Private Property)	9	4	12	11	17	25	14	39	34	165
Sinkholes (Public Right-of-Way)	42	15	53	33	50	78	36	73	87	467
2020										
Flooding (Yard/Private Property)	21	20	30	16	54	57	43	87	116	444
Flooding and Drainage Issues (Public Right-of-Way)	16	22	28	6	28	57	57	104	102	420
Sinkholes (Private Property)	3	4	15	8	11	22	29	42	26	160
Sinkholes (Public Right-of-Way)	14	9	39	20	36	75	46	64	98	401
2021										
Flooding (Yard/Private Property)	1	1	2	1	1	2		4	6	18
Flooding and Drainage Issues (Public Right-of-Way)	3	2	4	2	5	2	4	8	8	38
Sinkholes (Private Property)		1				2	2			5
Sinkholes (Public Right-of-Way)	1			1	2	3	4	4	8	23
Grand Total	264	165	406	213	446	593	449	876	950	4362

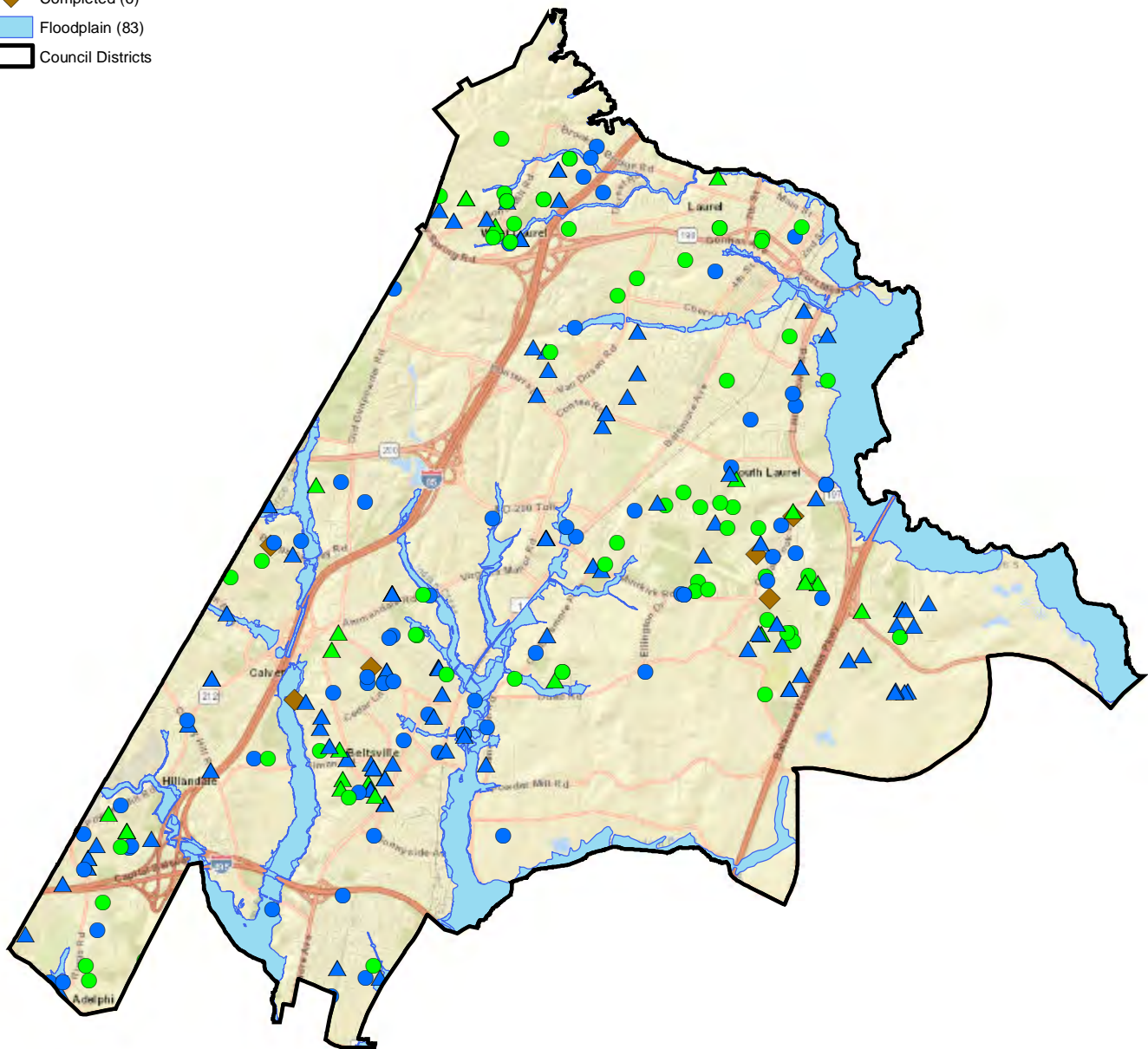
District 1 Drainage Complaints February 2018 thru February 2021

311 Drainage Complaints (FEB 2018 to 2021)

- Flooding (Yard/Private Property) (65)
- Flooding and Drainage Issues (Public Right-of-Way) (67)
- ▲ Sinkholes (Private Property) (36)
- ▲ Sinkholes (Public Right-of-Way) (101)

SWM Flood Control Projects (1993 to Present DOE)

- ◆ In Progress (0)
- ◆ Completed (6)
- Floodplain (83)
- Council Districts



Note: This map only contains service requests in Motorola. Does not include 911 calls.

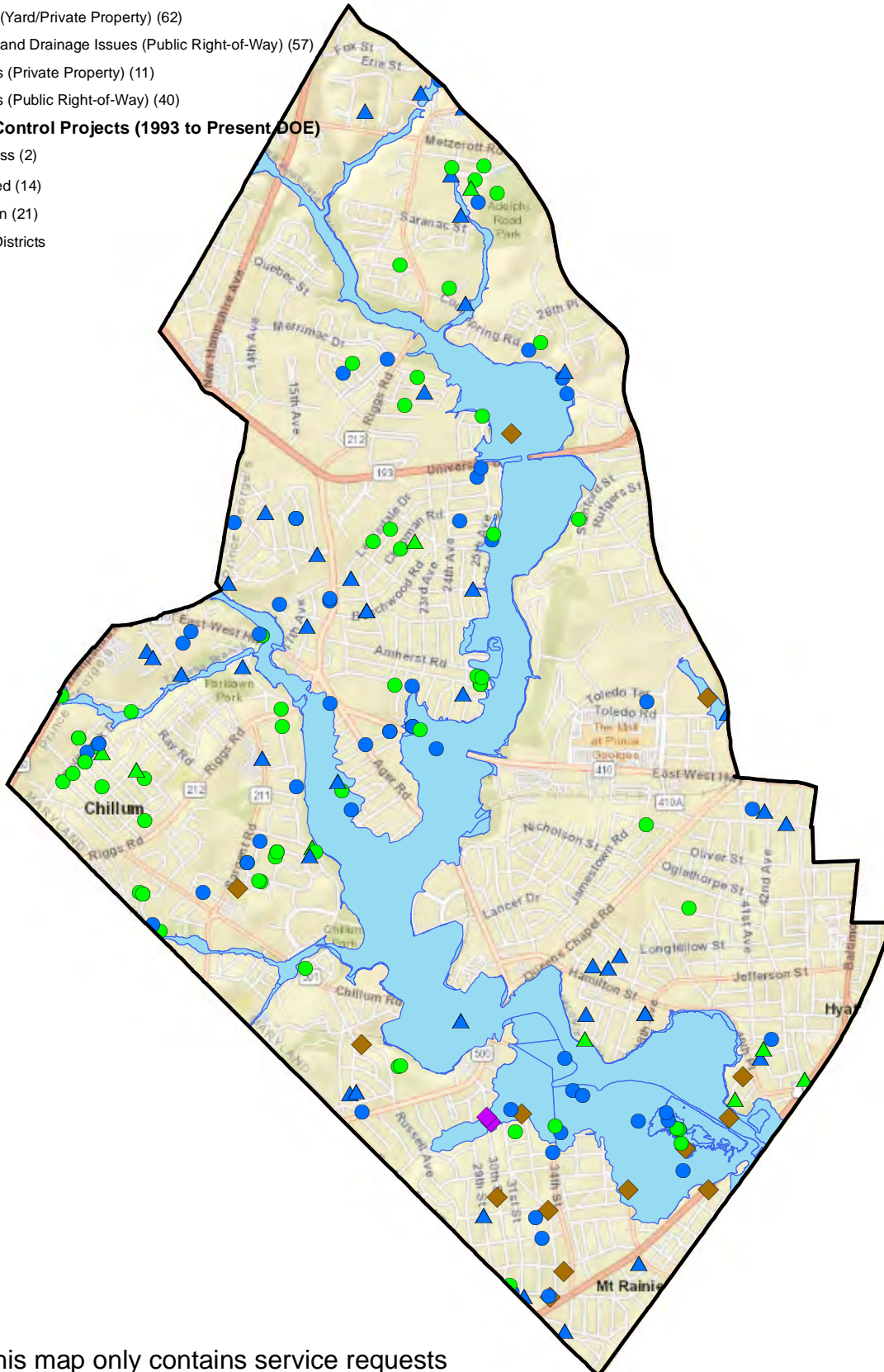
District 2 Drainage Complaints February 2018 thru February 2021

311 Drainage Complaints (FEB 2018 to 2021)

- Flooding (Yard/Private Property) (62)
- Flooding and Drainage Issues (Public Right-of-Way) (57)
- ▲ Sinkholes (Private Property) (11)
- ▲ Sinkholes (Public Right-of-Way) (40)

SWM Flood Control Projects (1993 to Present, DOE)

- ◆ In Progress (2)
- ◆ Completed (14)
- Floodplain (21)
- Council Districts



Note: This map only contains service requests in Motorola. Does not include 911 calls.

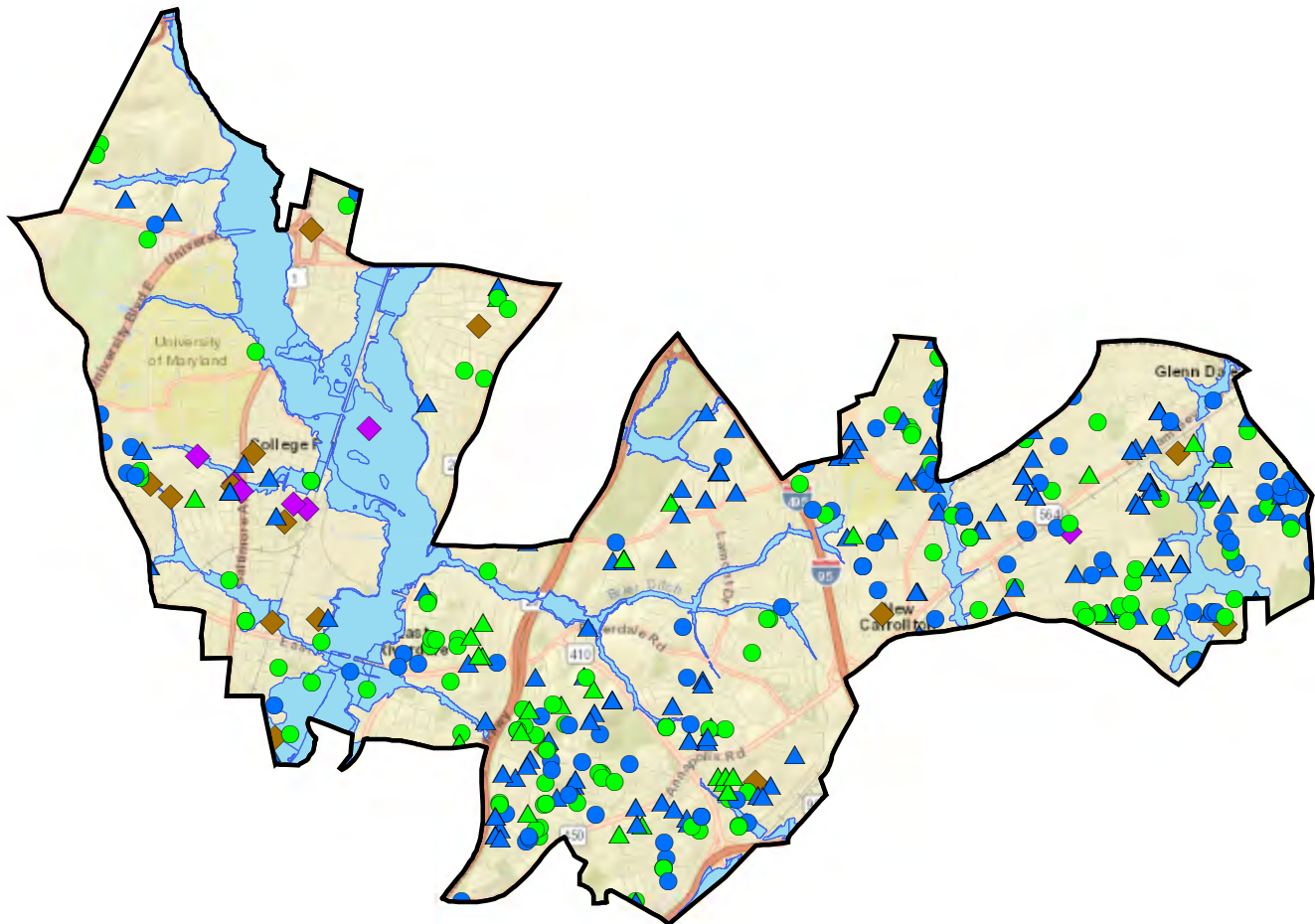
District 3 Drainage Complaints February 2018 thru February 2021

311 Drainage Complaints (FEB 2018 to 2021)

- Flooding (Yard/Private Property) (118)
- Flooding and Drainage Issues (Public Right-of-Way) (105)
- ▲ Sinkholes (Private Property) (51)
- ▲ Sinkholes (Public Right-of-Way) (161)

SWM Flood Control Projects (1993 to Present DOE)

- ◆ In Progress (7)
- ◆ Completed (17)
- Floodplain (81)
- Council Districts



Note: This map only contains service requests in Motorola. Does not include 911 calls.

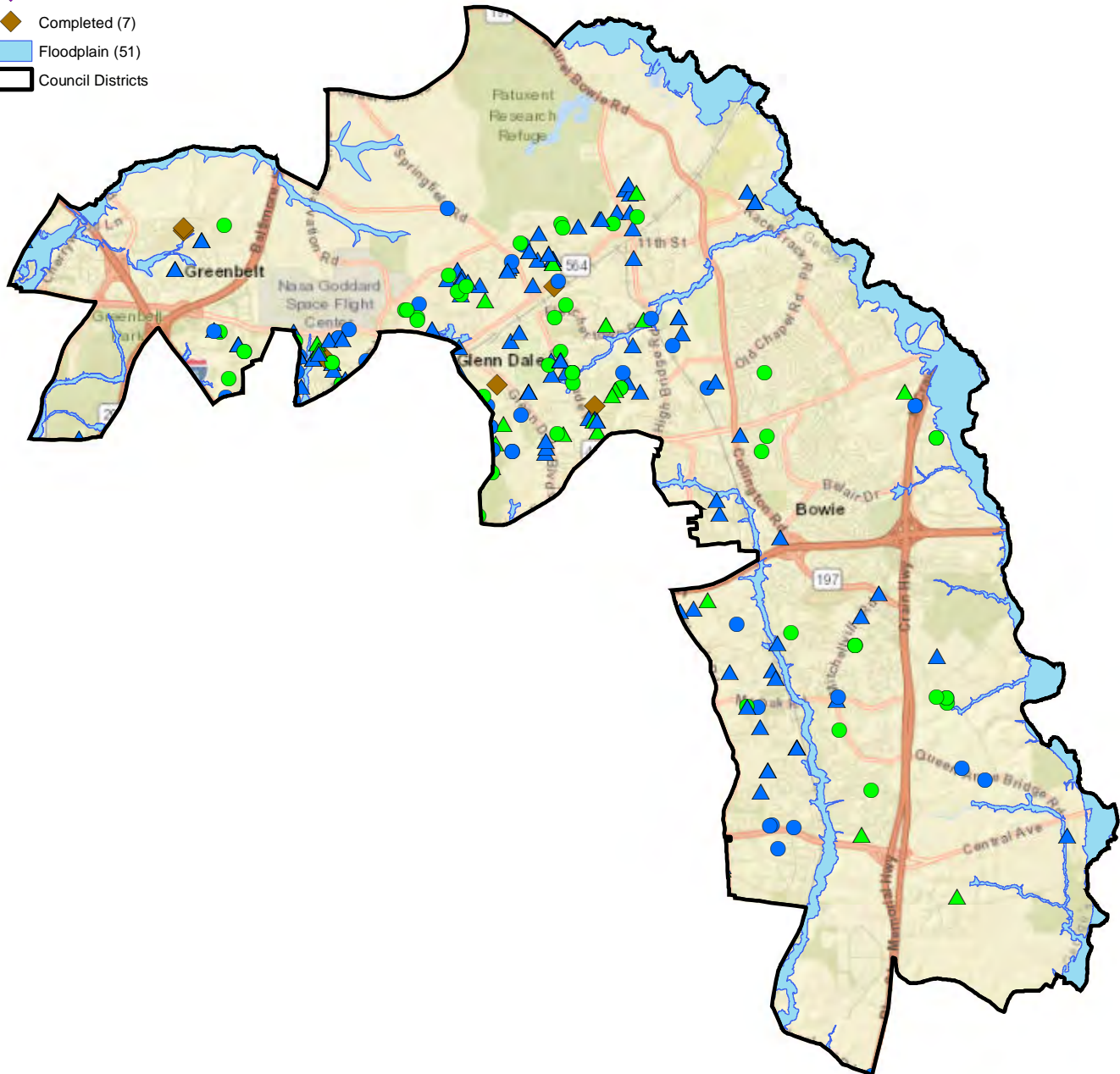
District 4 Drainage Complaints February 2018 thru February 2021

311 Drainage Complaints (FEB 2018 to 2021)

- Flooding (Yard/Private Property) (53)
- Flooding and Drainage Issues (Public Right-of-Way) (52)
- ▲ Sinkholes (Private Property) (33)
- ▲ Sinkholes (Public Right-of-Way) (124)

SWM Flood Control Projects (1993 to Present DOE)

- ◆ In Progress (0)
- ◆ Completed (7)
- Floodplain (51)
- Council Districts



Note: This map only contains service requests in Motorola. Does not include 911 calls.

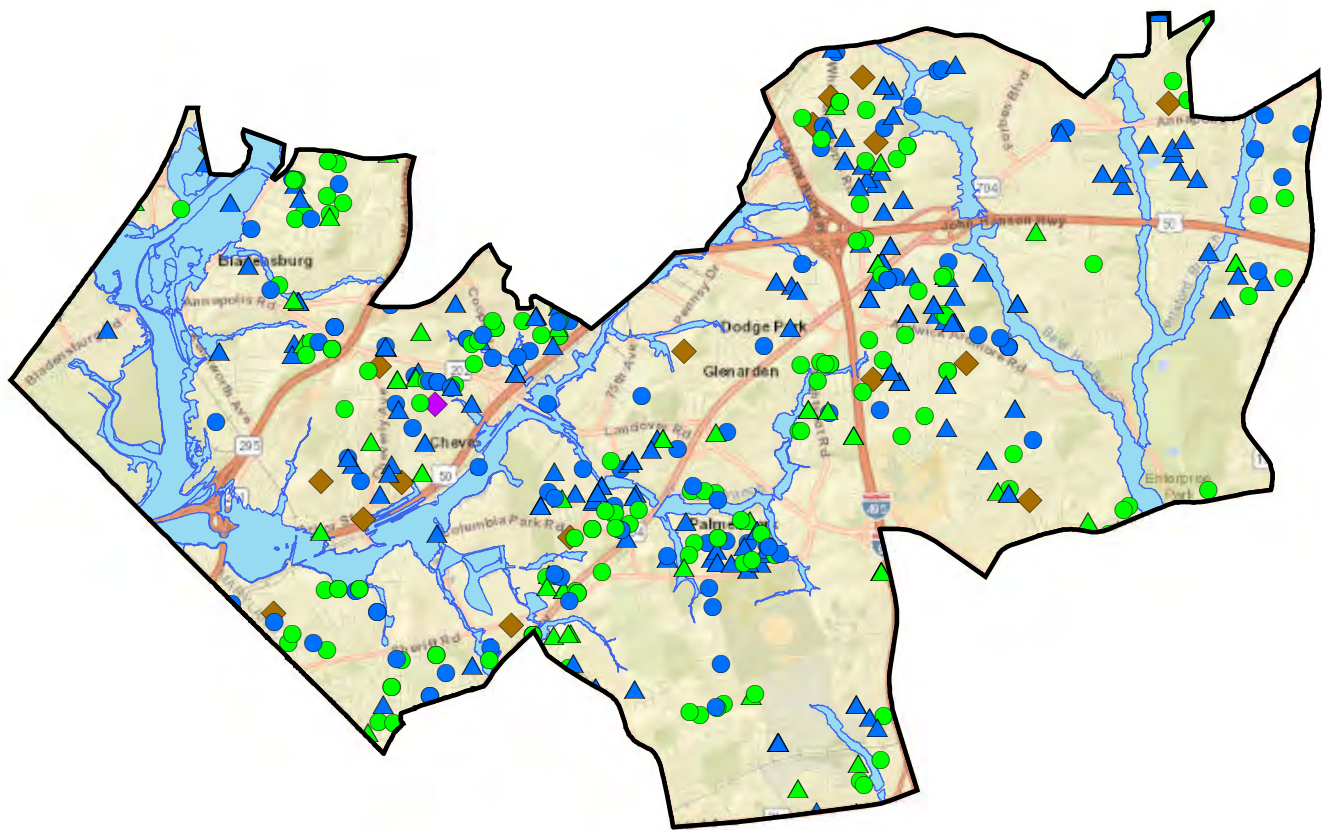
District 5 Drainage Complaints February 2018 thru February 2021

311 Drainage Complaints (FEB 2018 to 2021)

- Flooding (Yard/Private Property) (147)
- Flooding and Drainage Issues (Public Right-of-Way) (107)
- ▲ Sinkholes (Private Property) (54)
- ▲ Sinkholes (Public Right-of-Way) (164)

SWM Flood Control Projects (1993 to Present DOE)

- ◆ In Progress (1)
- ◆ Completed (19)
- Floodplain (101)
- Council Districts



Note: This map only contains service requests in Motorola. Does not include 911 calls.

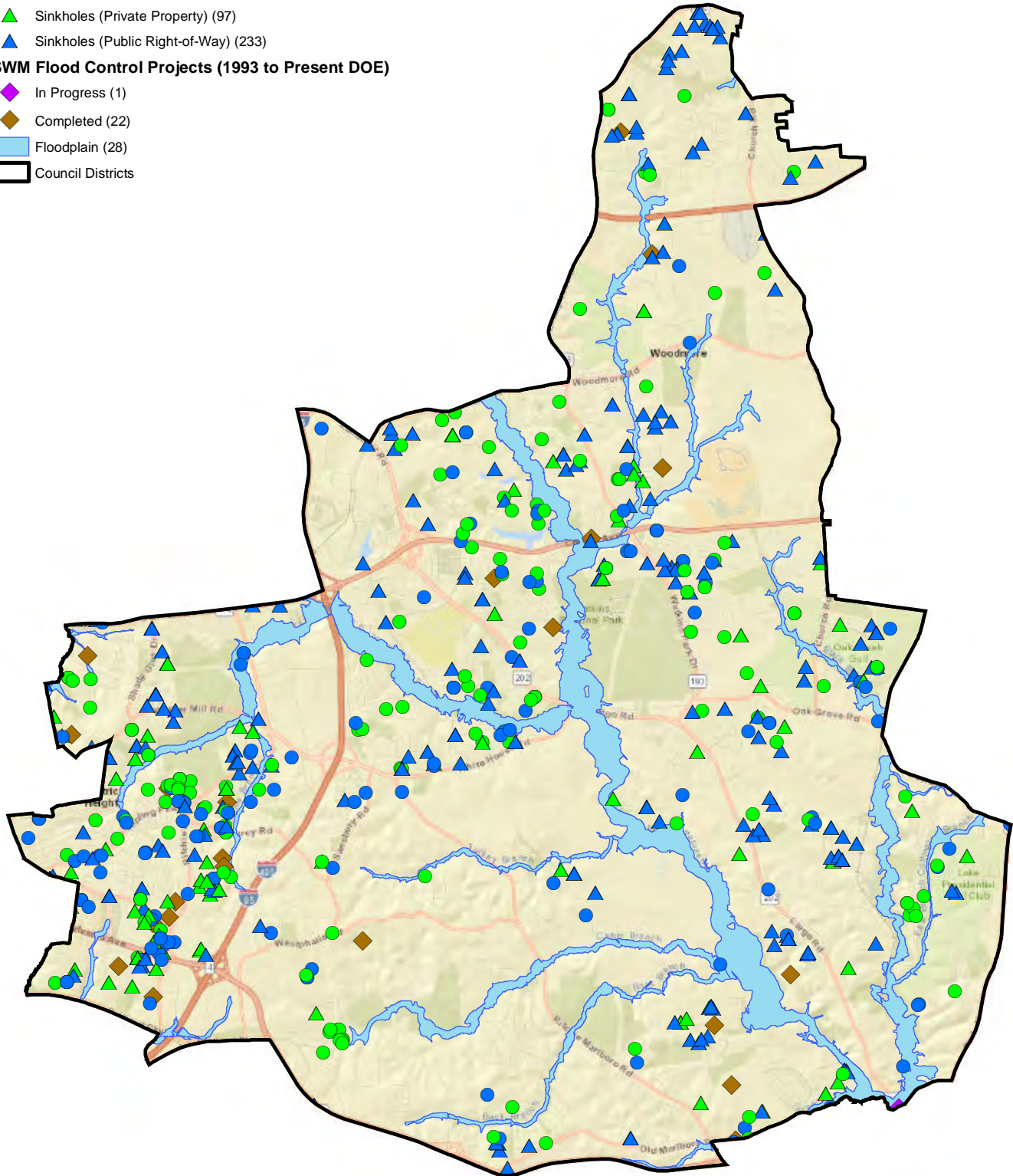
District 6 Drainage Complaints February 2018 thru February 2021

311 Drainage Complaints (FEB 2018 to 2021)

- Flooding (Yard/Private Property) (156)
- Flooding and Drainage Issues (Public Right-of-Way) (147)
- ▲ Sinkholes (Private Property) (97)
- ▲ Sinkholes (Public Right-of-Way) (233)

SWM Flood Control Projects (1993 to Present DOE)

- ◆ In Progress (1)
- ◆ Completed (22)
- Floodplain (28)
- Council Districts



Note: This map only contains service requests in Motorola. Does not include 911 calls.

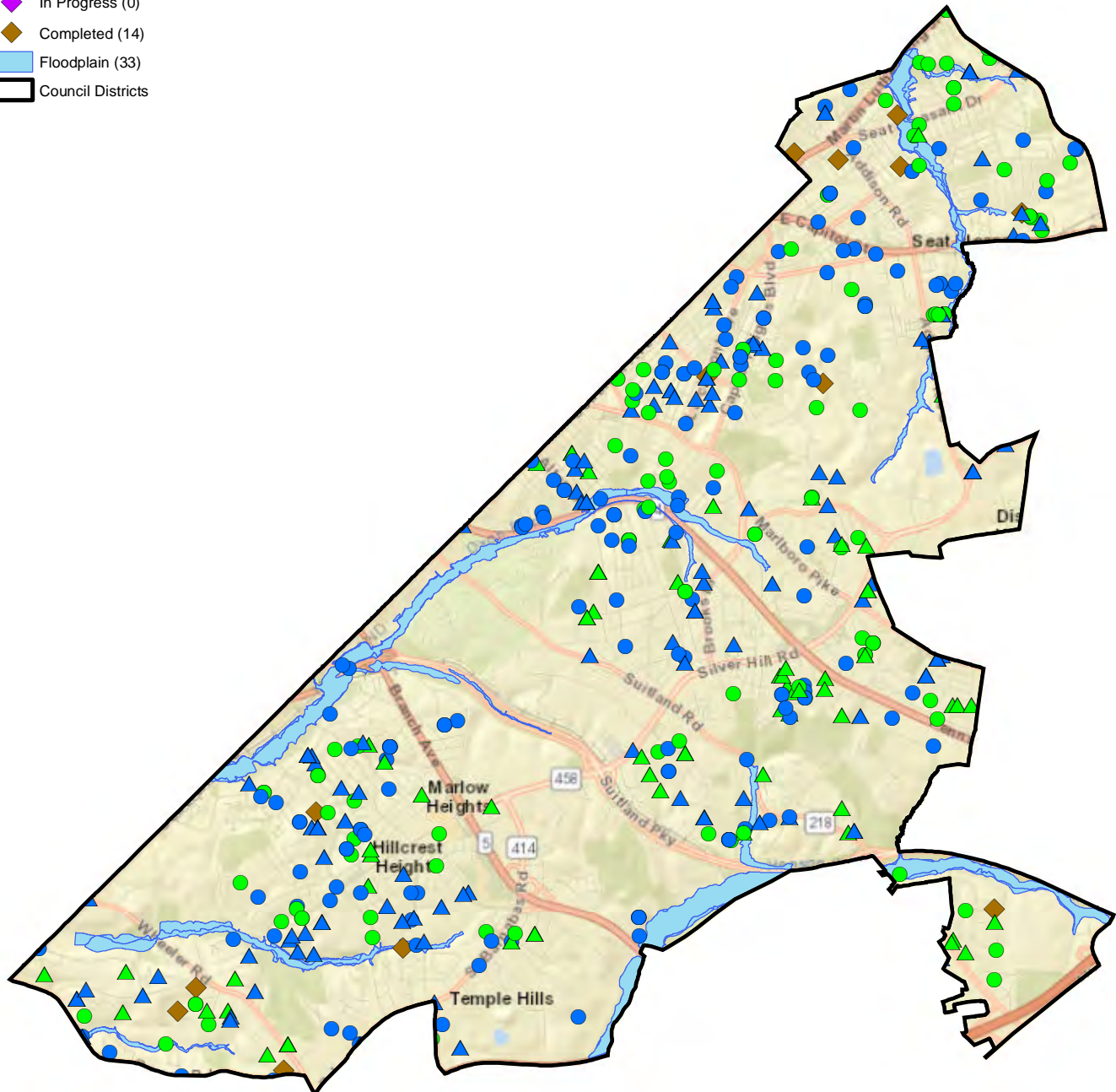
District 7 Drainage Complaints February 2018 thru February 2021

311 Drainage Complaints (FEB 2018 to 2021)

- Flooding (Yard/Private Property) (115)
- Flooding and Drainage Issues (Public Right-of-Way) (166)
- ▲ Sinkholes (Private Property) (76)
- ▲ Sinkholes (Public Right-of-Way) (126)

SWM Flood Control Projects (1993 to Present DOE)

- ◆ In Progress (0)
- ◆ Completed (14)
- Floodplain (33)
- Council Districts



Note: This map only contains service requests in Motorola. Does not include 911 calls.

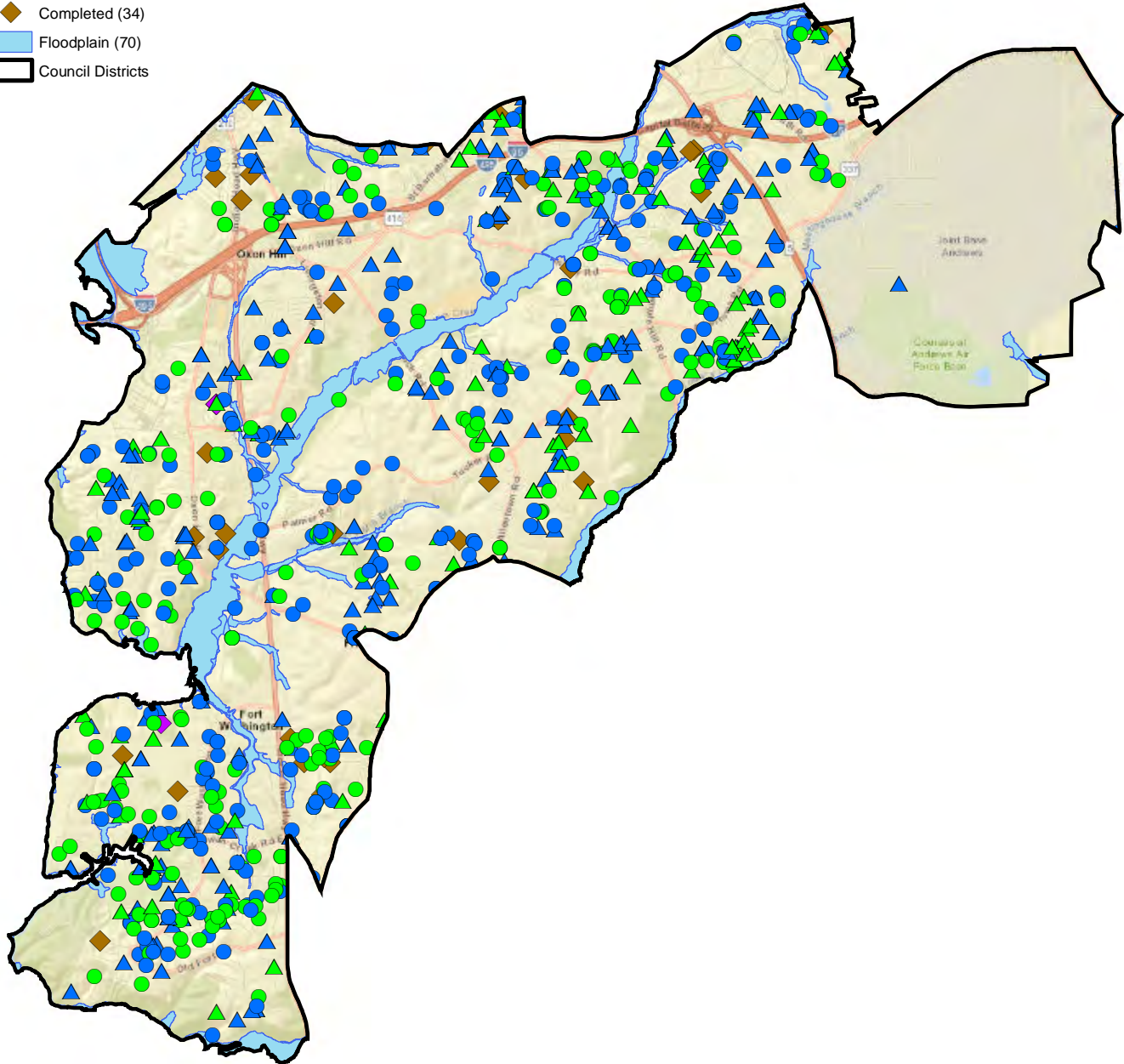
District 8 Drainage Complaints February 2018 thru February 2021

311 Drainage Complaints (FEB 2018 to 2021)

- Flooding (Yard/Private Property) (230)
- Flooding and Drainage Issues (Public Right-of-Way) (320)
- ▲ Sinkholes (Private Property) (130)
- ▲ Sinkholes (Public Right-of-Way) (235)

SWM Flood Control Projects (1993 to Present DOE)

- ◆ In Progress (2)
- ◆ Completed (34)
- Floodplain (70)
- Council Districts



Note: This map only contains service requests in Motorola. Does not include 911 calls.

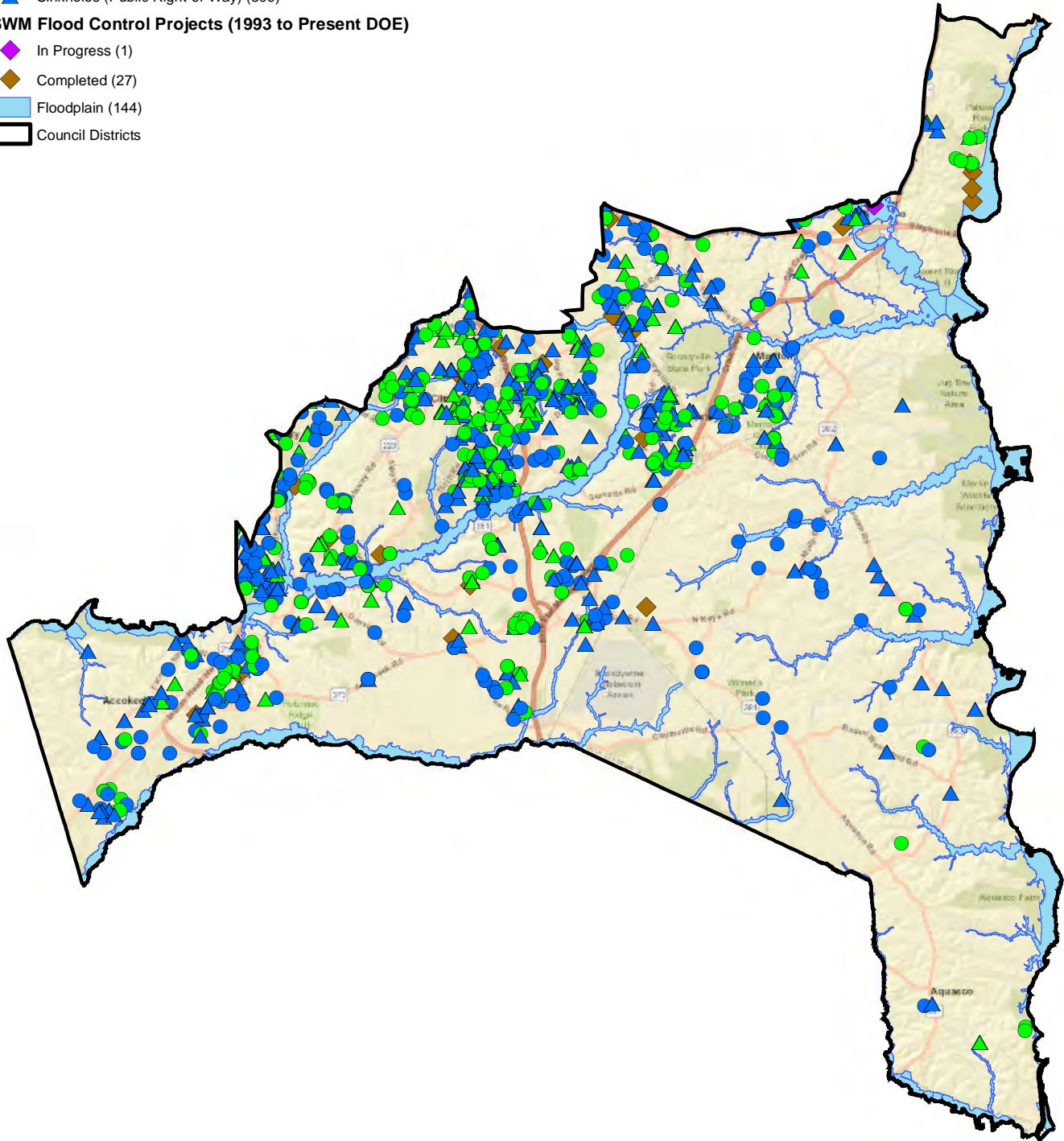
District 9 Drainage Complaints February 2018 thru February 2021

311 Drainage Complaints (FEB 2018 to 2021)

- Flooding (Yard/Private Property) (247)
- Flooding and Drainage Issues (Public Right-of-Way) (317)
- ▲ Sinkholes (Private Property) (140)
- ▲ Sinkholes (Public Right-of-Way) (309)

SWM Flood Control Projects (1993 to Present DOE)

- ◆ In Progress (1)
- ◆ Completed (27)
- Floodplain (144)
- Council Districts



Note: This map only contains service requests in Motorola. Does not include 911 calls.

DPW&T

Drainage Improvements

Recently completed and Ongoing Projects



- D1 – 7018 Redmiles Storm Drain repair
 - Project Type – Local Flooding (Urban)
 - Location – Laurel
 - Installed inlet and storm drain
 - Completed March 2020



- D1 – Greencastle Bridge and Storm Drain
 - Project Type – Flood Control
 - Location – Laurel
 - Installed inlet and storm drain
 - Completed March 2020

- D2 – Allison Street Levee
 - Project Type – Flood Control
 - Location – Laurel
 - Upgrade existing levee system
 - Anticipated Completed 2021

- D3 – Wells Run Channel Improvements
 - Project Type – Flood Control
 - Location – Riverdale
 - In-Kind replacement and Naturalization of channel
 - Anticipated Construction in 2022



- D3 – Berwyn Heights Inlet Upgrades

- Project Type – Local Drainage
- Location – Town of Berwyn Heights
- Installed new and upsized inlets
- Completed Fall 2018



- D4 – Daisy Lane Storm Drain

- Project Type – Local Drainage
- Location – Glenn Dale
- Installed storm drain
- Anticipated completion May 2021



- D5 – Otis Street Outfall

- Project Type – Local Flooding
- Location – Laurel
- Installed inlet and storm drain
- Anticipated Completion is Fall 2021



- D6 – Pinevale Drainage Improvements

- Project Type – Local Flooding (Urban)
- Location – District Heights
- Installed inlets and storm drain
- Completed December 2020



- D7 – Suitland Outfall

- Project Type – Local Flooding (Urban)
- Location – Hillcrest Heights
- Installed inlet and storm drain
- Completed Summer 2019



- D8 – Trafalgar Outfall

- Project Type – Outfall Repair
- Location – Fort Washington
- Repaired failed outfall
- Completed December 2019



- D8 – Groveton

- Project Type – Local Flooding (Urban)
- Location – Clinton
- Installed inlet and storm drain
- Completed March 2019



- D9 – South Springfield Road Washout

- Project Type – Emergency Repair
- Location – Brandywine
- Installed inlet and storm drain
- Completed 2016



PRINCE GEORGES COUNTY DRAINAGE COMPLAINT RESOLUTION PROCESS

DOE – DEPARTMENT OF ENVIRONMENT
 DPIE – DEPARTMENT OF PERMITTING, INSPECTIONS
 AND ENFORCEMENT
 DPWT – DEPARTMENT OF PUBLIC WORKS AND
 TRANSPORTATION

