

# *Trending Steady: Closing the Gaps That Hold Us Back*

*Joseph L. Wright, MD, MPH  
Board of Health Session  
April 3<sup>rd</sup>, 2018*

## 2018 County Health Rankings Maryland



*University of Wisconsin-Population Health Institute and the RWJ Foundation*

# Key Definitions: Outcomes

Health Outcomes

Health Factors

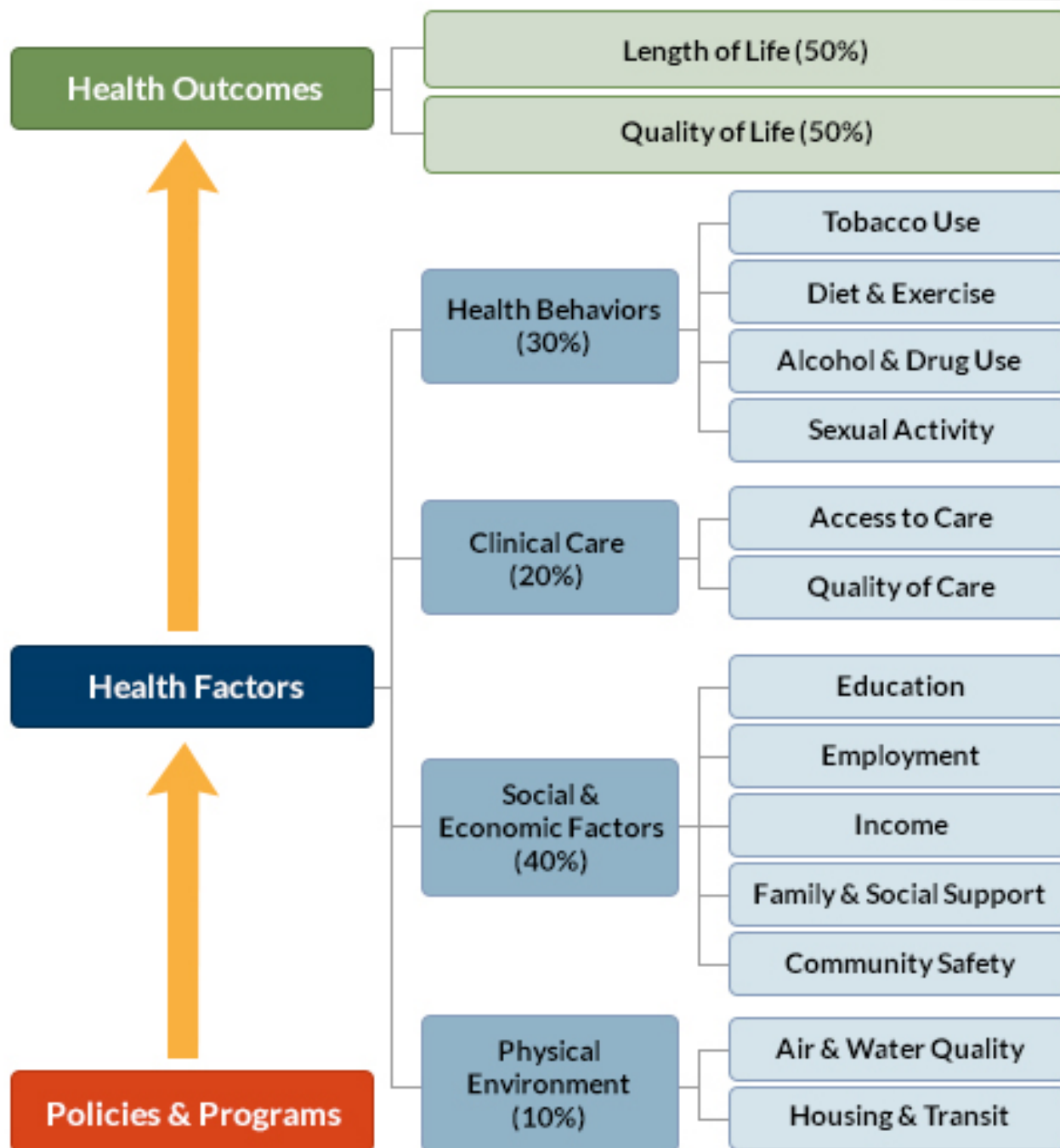
Policies and Programs

- **Health Outcomes** are defined as a change (or lack thereof) in the health status of a population which can be attributed to select **factors** or interventions

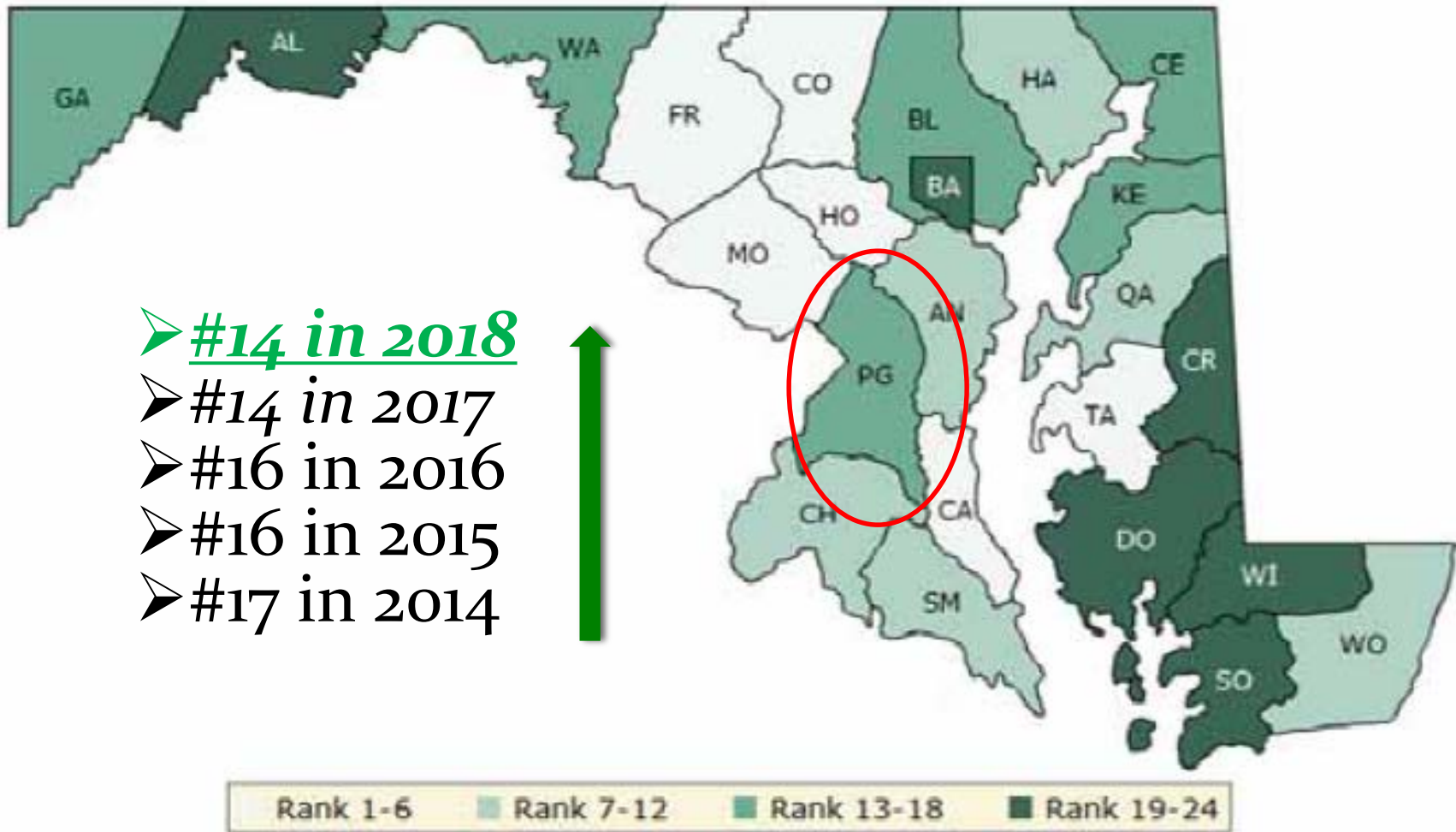
# Key Definitions: Factors



- **Health factors** are the economic and social conditions that influence differences in outcomes.
- Four (4) categories of health factors are:
  - Behavioral
  - Clinical Care
  - Social & Economic
  - Environmental



# Maryland **Health Outcome** Rankings: Prince George's County - 2018

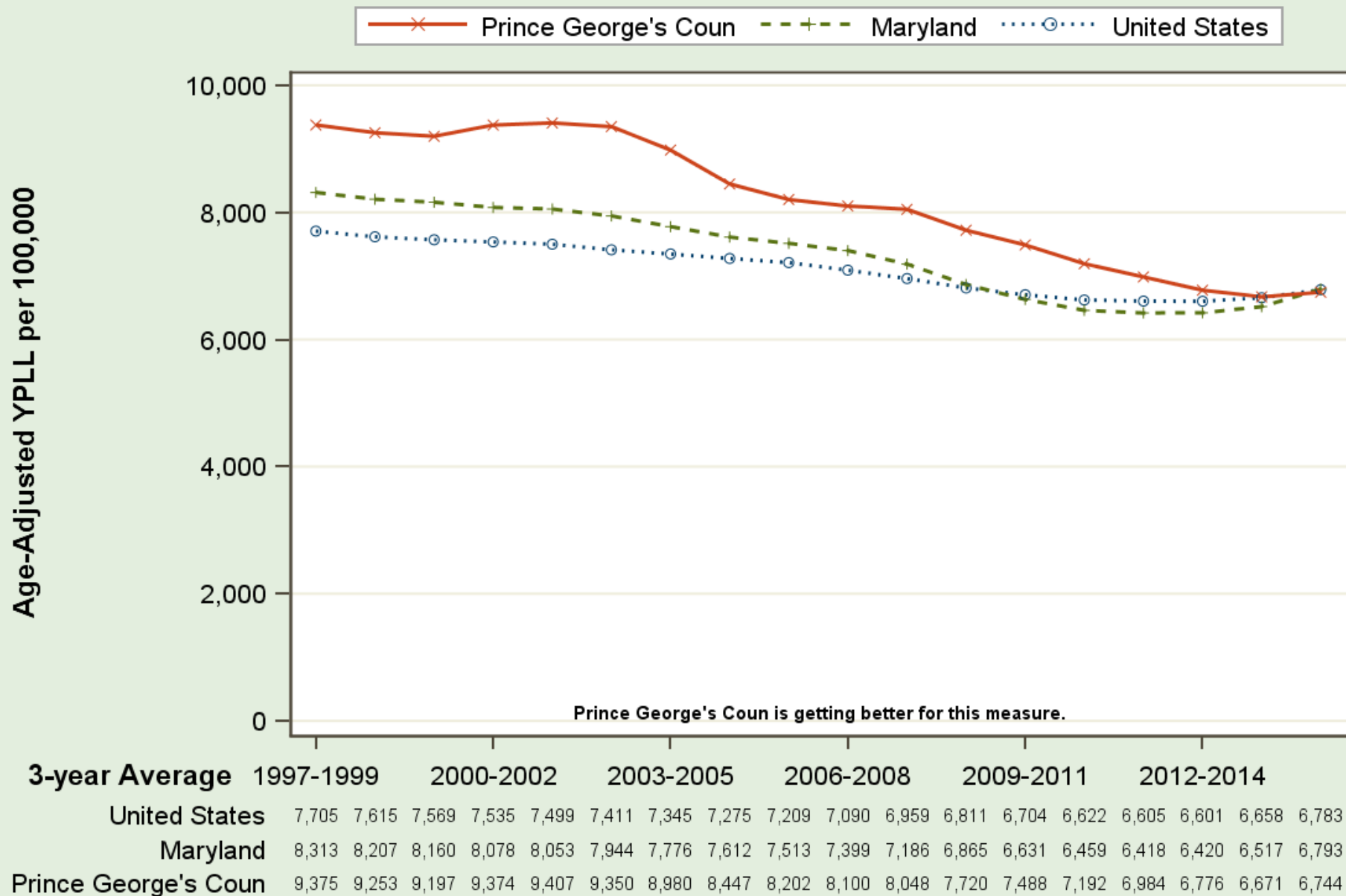


# Health Outcomes: What Is the Principal Driver?

- Prince George's County is #12 of 24 in Length of Life
- Years of Potential Life Lost (YPLLs): [premature death]
  - **2018 = 6700 yrs per 100,000 population**
  - 2017 = 6800 yrs per 100,000 population
  - 2016 = 7000 yrs per 100,000 population

# Premature death in Prince George's Coun, MD

## Years of Potential Life Lost (YPLL): County, State and National Trends

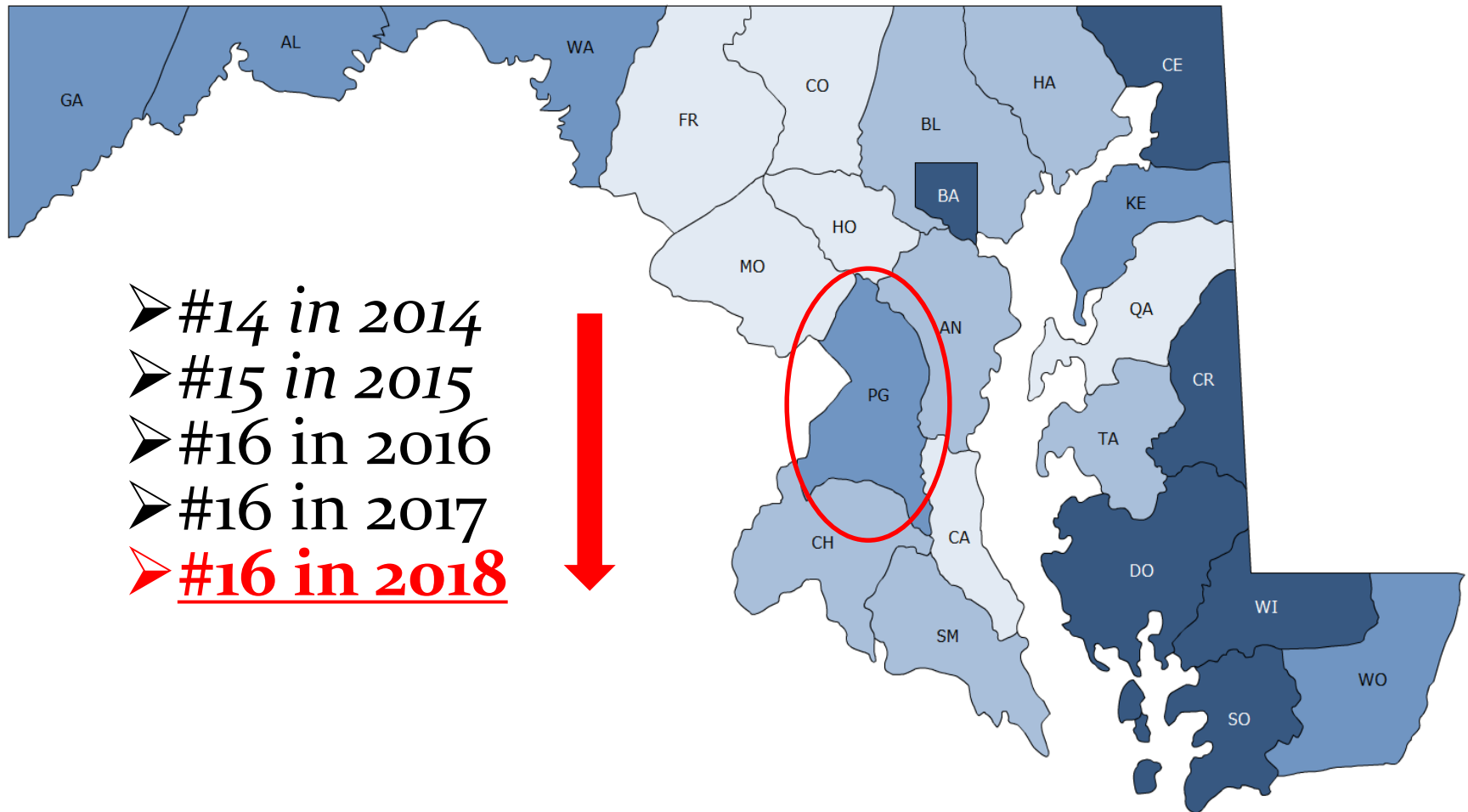


Please see Measuring Progress/Rankings Measures for more information on trends. Trends were measured using all years of data



# Maryland **Health Factors** Rankings: Prince George's County - 2018

- #14 in 2014
- #15 in 2015
- #16 in 2016
- #16 in 2017
- **#16 in 2018**



Rank 1-6   Rank 7-12   Rank 13-18   Rank 19-24

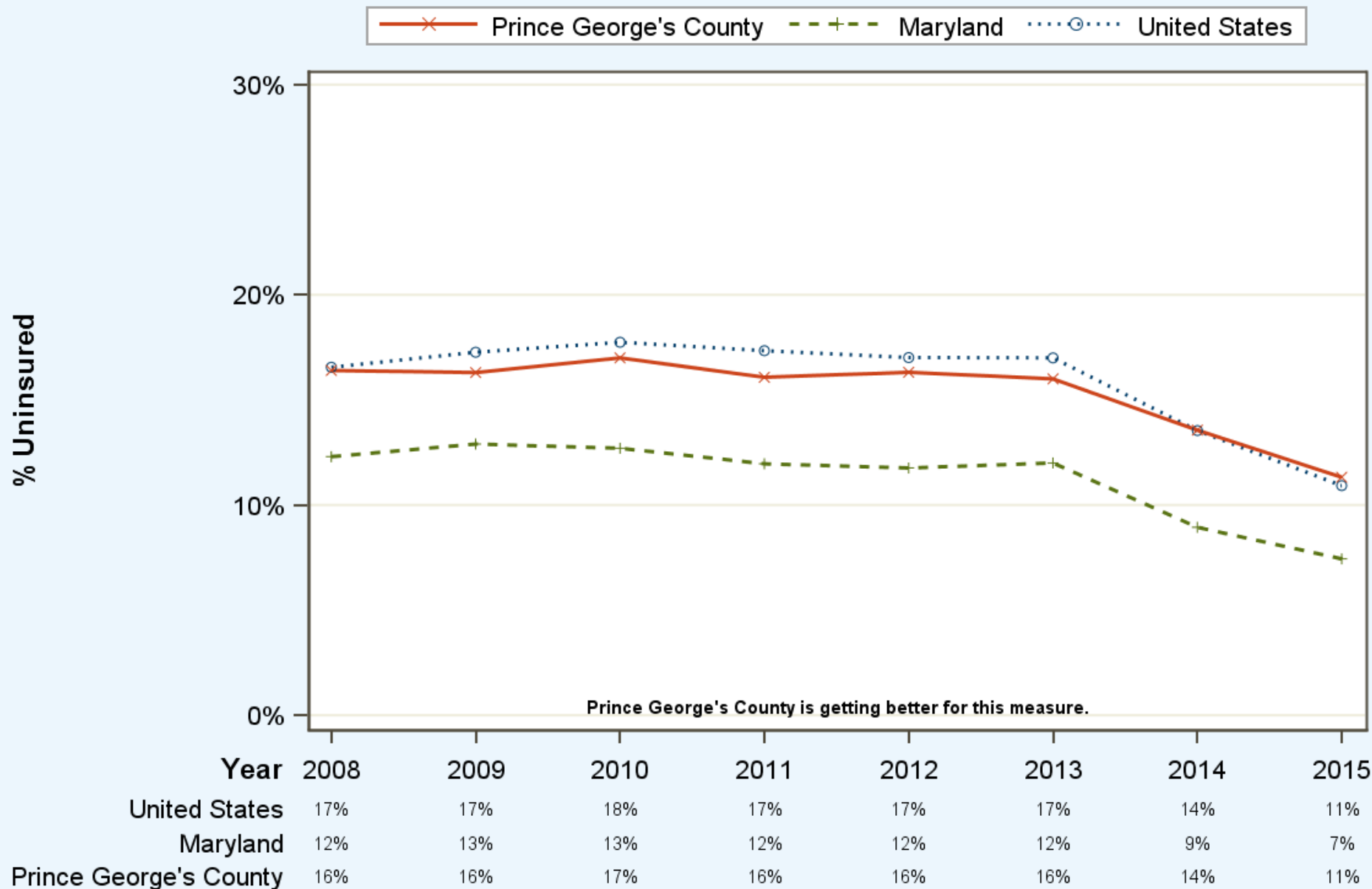


# Health Factors: What are the Principal Drivers?

- Prince George's is #22 of 24 in Clinical Care

Category	County	Margin of Error	Top U.S.	Maryland
Uninsured	11%	11-12%	6%	7%
Primary care physicians	1,910:1		1,030:1	1,140:1
Dentists	1,650:1		1,280:1	1,320:1
Mental health providers	890:1		330:1	460:1
Preventable hospital stays	46	44-47	35	47
Diabetes monitoring	<u>82%</u>	81-84%	91%	85%
Mammography screening	<u>61%</u>	59-63%	71%	64%

# Uninsured in Prince George's County, MD County, State and National Trends

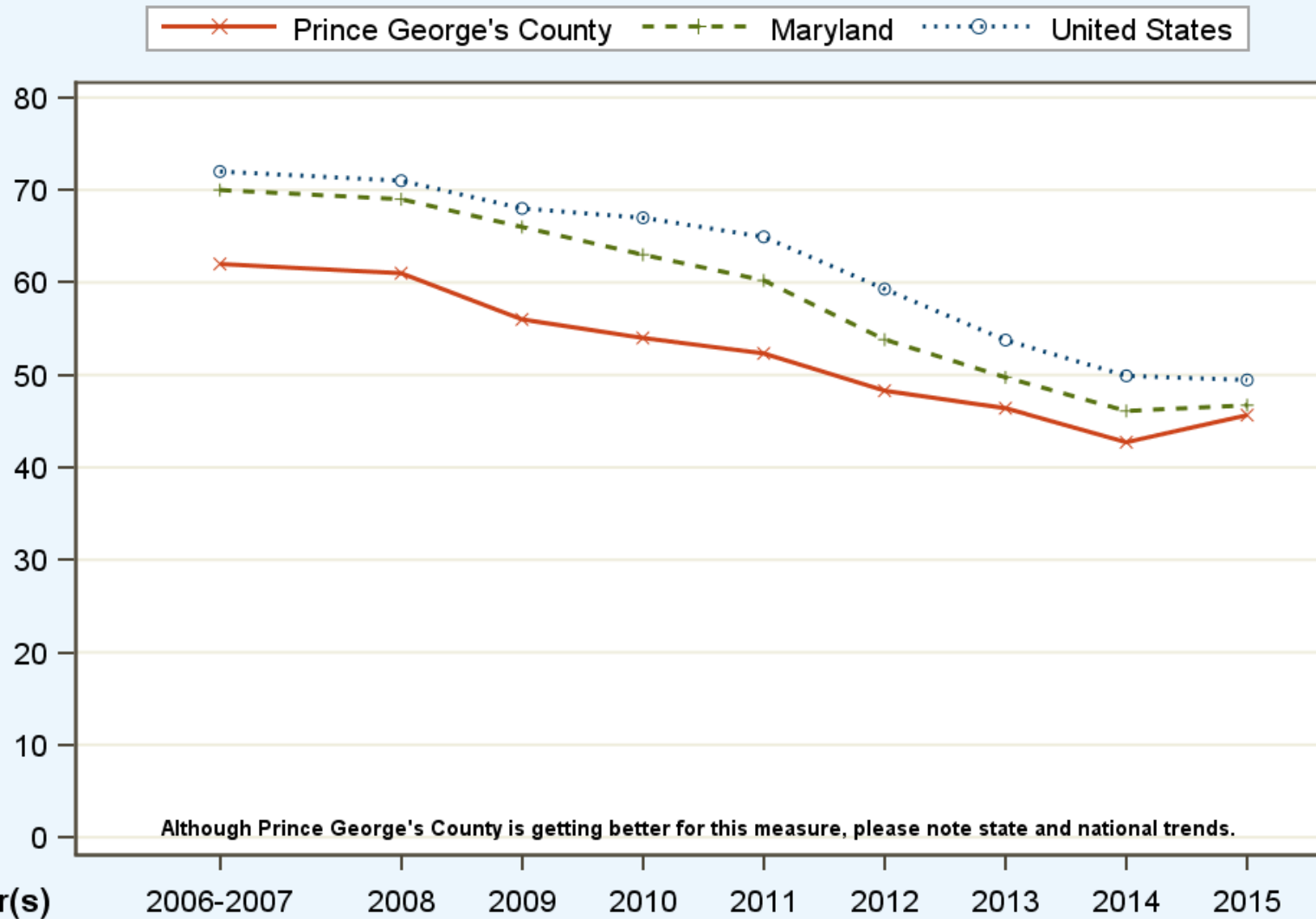


Please see Measuring Progress/Rankings Measures for more information on trends. Trends were measured using all years of data

# Preventable hospital stays in Prince George's County, MD

## Preventable Hospital Stays: County, State and National Trends

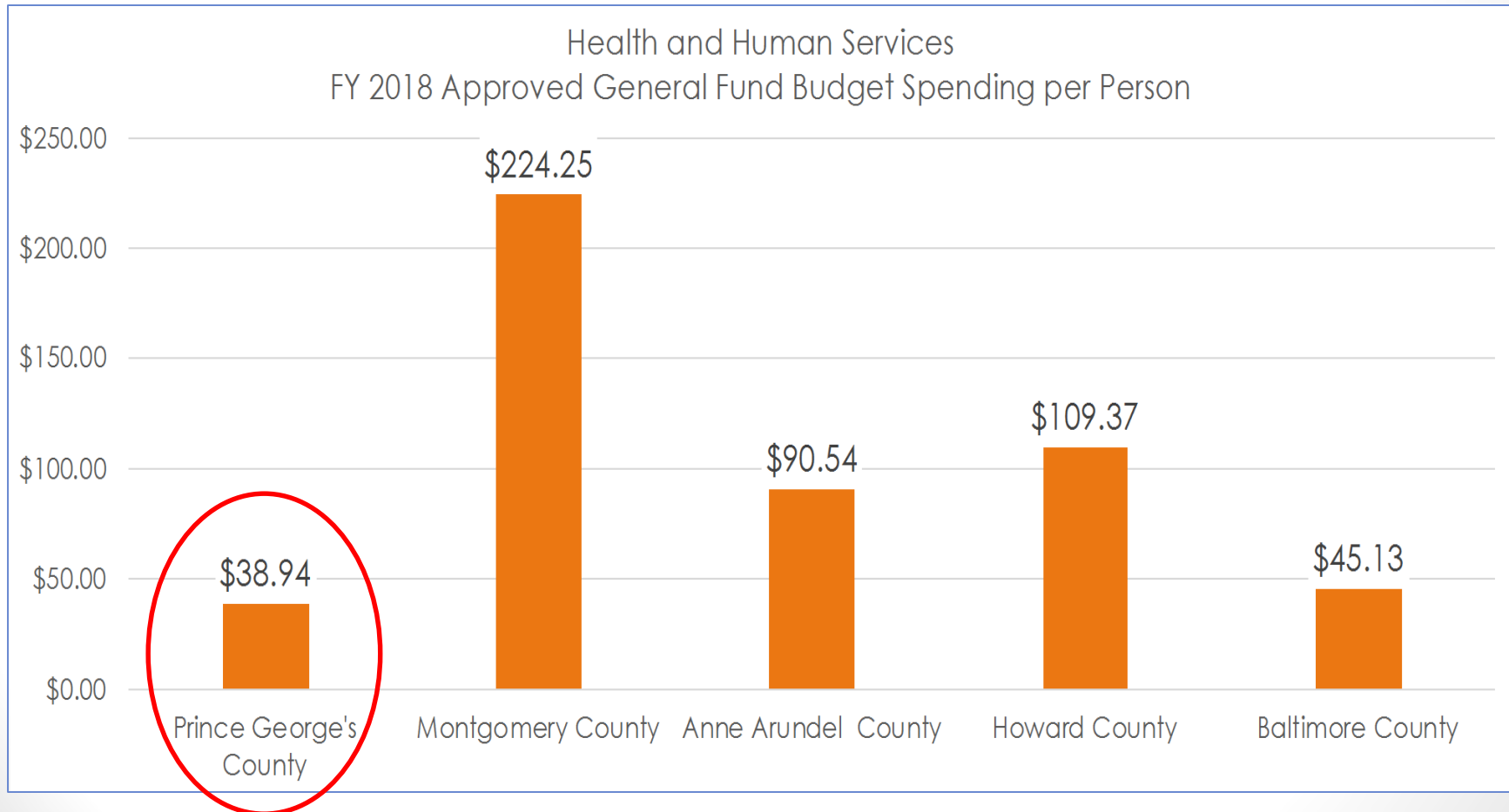
Rate/1,000 Medicare Enrollees



United States	72	71	68	67	65	59	54	50	49
Maryland	70	69	66	63	60	54	50	46	47
Prince George's County	62	61	56	54	52	48	46	43	46

Please see Measuring Progress/Rankings Measures for more information on trends. Trends were measured using all years of data

# Sector Investment: Per Capita Regional Comparison, FY18



# 2018 County Health Rankings:

## Conclusions

- Health Outcomes and Health Factors continue to languish in the third quartile.
- County's ranking is disproportionately impacted by underperformance in clinical care and health behaviors, i.e., overweight/obesity.
- Significant sector underinvestment notwithstanding, life expectancy continues to rise.