

PRINCE GEORGE'S COUNTY | CORVIAS



Prince George's County Council

Transportation, Infrastructure, Energy and Environment Committee

June 27, 2019



S T O R M W A T E R M A N A G E M E N T D I V I S I O N

IMPERVIOUS ACRES TREATED COMPLETED BY PROGRAM (June 2019)

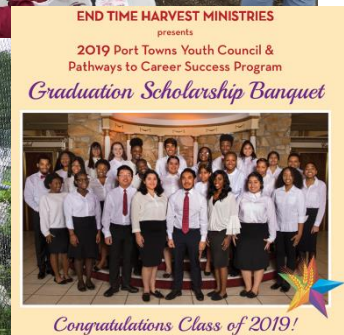
CLEAN WATER PARTNERSHIP P-3 PROGRAM				
Sub-Program	Project Count	% of Total	Total Impervious Area (Acres)	% of Total
Municipal	25	24.8%	67.24	3.1%
Public Ponds	35	34.7%	2058.30	95.0%
Outfalls	1	1.0%	1.00	0.0%
Alternative Compliance Program	16	15.8%	5.72	0.3%
Schools	24	23.8%	33.47	1.5%
Totals	101	100%	2165.73	100%



STORM WATER MANAGEMENT DIVISION

COMMUNITY PARTNERSHIPS

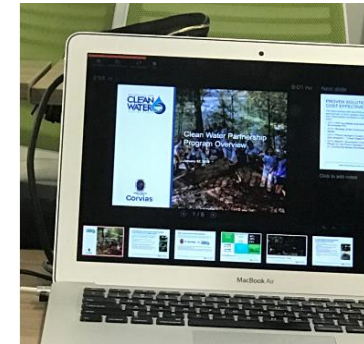
CWP_PGCPS PROGRAM COMPLETED/CONSTRUCTION					
School	District	Total Impervious Acres Treated	School	District	Total Impervious Acres Treated
Oakland Elementary School	1	0.8	Walker Mill Middle School	6	1.85
High Point High School	1	0.66	John H. Bayne Elementary School	6	1
Laurel Elementary School	1	0.8	Carmody Hills Elementary School	7	0.31
Scotchtown Hills Elementary School	1	0.96	Seat Pleasant Elementary School	7	0.22
Calverton Elementary School	1	0.79	Capitol Heights Elementary School	7	0.51
Cool Springs Elementary School	2	0.76	Francis Scott Key Elementary School	7	0.96
Rosa L Parks Elementary School	2	0.27	Potomac High School	7	0.79
Lewis Dales Elementary School	2	0.38	Princeton Elementary School	8	0.81
Glen Ridge Elementary School	3	1.22	Valley View Elementary School	8	0.99
Eleanor Roosevelt High School	4	4.8	John Hanson	8	3.22
Robert Goddard Montessori	4	0.69	Oxon Hill Middle School	8	0.57
Templeton Elementary School	5	4.11	Thurgood Marshall	8	1.46
Central High School	6	0.97	Friendly High School	9	4.36
Largo High School	6	1.87	Gwynn Park Elementary School	9	4.93
Tall Oaks Elementary School	6	0.29	Baden Elementary School	9	0.62
Phyllis E Williams Spanish Immersic	6	1.46	Mataponi Elementary School	9	1
District Heights Elementary School	6	1.08	William Schmidt Center	9	0.24
PGCPS-CWP Schools Program Total Impervious Acres Treated					45.75



ECONOMIC & LOCAL CAPACITY DEVELOPMENT

Clean Water Partnership Phase I & II		
TARGET CLASS PERFORMANCE		
Amount	Target Class Category	Percent
\$59,606,335.00	CBBE (County Based Business)	51%
\$24,830,637.00	CMBE (County Based MBE)	21%
\$3,815,614.00	CLBE (County Located Business)	3%
\$11,811,069.00	MBE (Minority Business)	10%
\$429,165.00	CL-MBE (County Located MBE)	0%
\$100,492,820.00	Target Class Total	85%
\$17,371,092.00	Non-Target Class	15%
\$117,863,912.00	TOTAL EXPENDITURES	100%
		40% Requirement
		50% Requirement (of Target Class)
\$87,408,385.00	Local Expenditures	74%
214,935.57 hrs.	County Resident Hours	57%
		51% Requirement

CWP Mentor Protégé Firms	
Cohort 1	
Estime Enterprises, Inc.	Faulkner Lawn Care & Landscaping
Grace Management & Construction, LLC	Green Forever Landscaping
Kirila Earthworks	M&G Services, Inc.
Phoenix Infrastructure	
Cohort 2	
Arya Civil	Bota Engineers
Bourne Environmental	Celsue Construction
Community Bridge, Inc.	DAD Environmental Construction
G-11 Enterprises	Hybrid Construction, LLC
L.E. Blue Associates, Inc.	United Construction Services, LLC
Cohort 3	
Actaeon, LLC	Clinton Sewer Expert, Inc
Daylilly Landscaping, LLC	Iconic Plumbing, LLC
J.D. Clark Professional	JJ Prime Services, LLC
JVM Consulting & Contracting Services	TCG Property Care Inc.



STORM WATER MANAGEMENT DIVISION

