



Employ Prince George's FY 2026 Budget Overview

Budget & Policy Analysis Division

David Noto, Policy Analyst

April 28, 2025

Agenda

Department Overview

Strategic Focus

Budget Summary

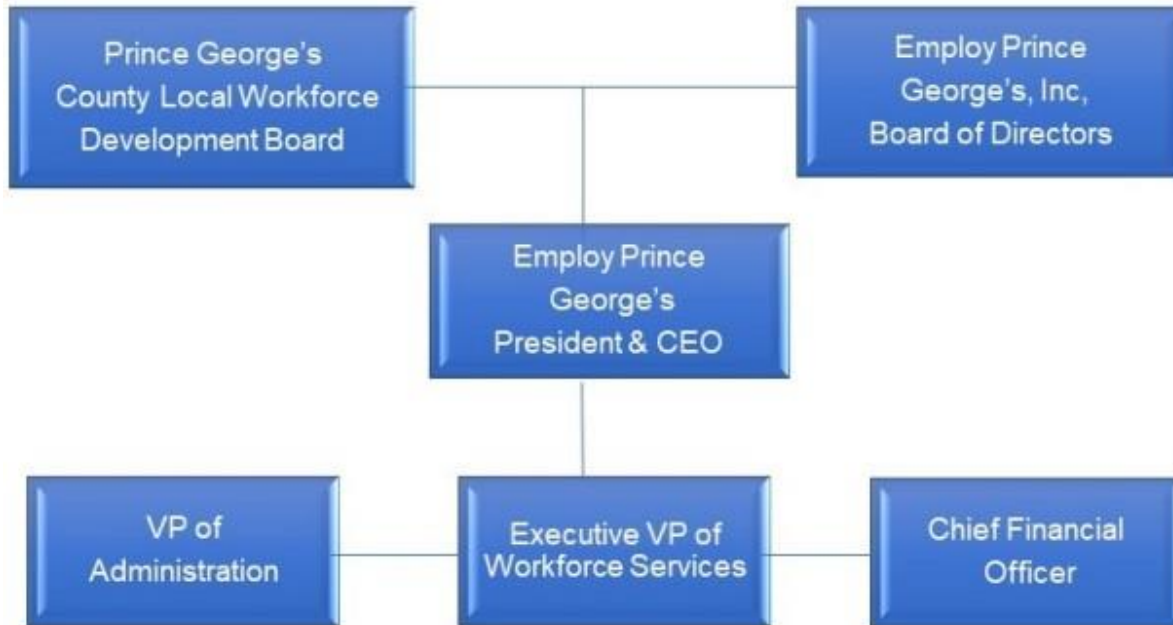
Revenues

Staffing

Challenges

Employ Prince George's

Walter Simmons
President & CEO



Mission

- Serve as the link between job seekers looking to begin or change careers and businesses looking for skilled workers to maintain competitiveness in a changing labor market. The Prince George's County American Job Center serves over 40,000 job seekers and businesses annually.

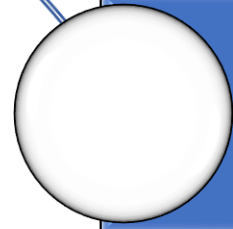
Core Services

Connect community-based organizations, government agencies, educational institutions and faith-based organizations to leverage resources and maximize workforce development outcomes, while reducing duplication of services

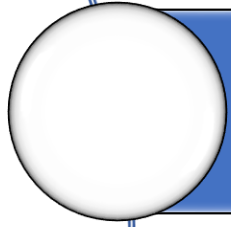
Deliver workforce development services to County job seekers, prioritizing residents who are unemployed or underemployed, sector specific programs (Industry Bridge Program), adult demographic specific programs, youth demographic specific programs (in-school and out-of-school), and apprenticeship programs

Support the economy of Prince George's County by creating high-demand programs tailored to specific industries

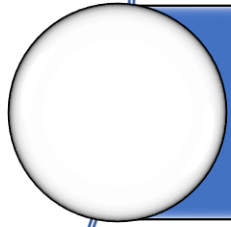
Strategic Focus FY 2026



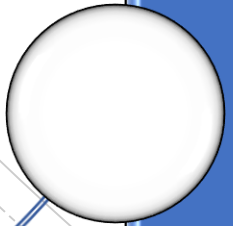
Increase the number of community-based organizations, government agencies, educational institutions, and faith-based organizations who are members of the Prince George's County American Job Center Community Network, as evidenced by signed MOU's



Increase the number of jobs (employed people) in Prince George's County through the efforts of Employ Prince George's 13 workforce development programs



Increase the number of jobs posted in Prince George's County and ensure those jobs are filled with Prince George's County residents, through the efforts of the Business Services Department



Increase accessibility of workforce development programming throughout Prince George's County, virtually and in-person

FY 2026 BUDGET SUMMARY

Expenditures by Category

Category	FY 2024 Actual	FY 2025 Budget	FY 2025 Estimate	FY 2026 Proposed	Change FY25-FY26	
					Amount (\$)	Percent (%)
Compensation	\$7,841,974	\$8,116,500	\$10,934,400	\$6,524,000	\$(1,592,500)	-19.6%
Fringe Benefits	2,541,216	2,759,600	3,717,600	2,242,700	(516,900)	-18.7%
Operating	9,511,037	7,447,000	16,380,400	8,041,900	594,900	8.0%
Total	\$19,894,227	\$18,323,100	\$31,032,400	\$16,808,600	\$(1,514,500)	-8.3%

Funded through an annual County grant in the Non-Departmental section of the budget.



REVENUES

Category	FY 2024 Actual	FY 2025 Budget	FY 2025 Estimate	FY 2026 Proposed	\$ Change	% Change
County Grant - County Executive	\$ 1,989,600	\$ 1,694,300	\$ 1,694,300	\$ 1,609,600	\$ (84,700)	-5.0%
County Grant - Reentry Program	300,000	300,000	300,000	300,000	\$ -	0%
County Grant - Returning Citizen Affairs Division	1,000,000	1,000,000	1,000,000	950,000	\$ (50,000)	-5%
County Grant - Video Lottery Terminal (VLT)	637,700	637,700	200,000	200,000	\$ (437,700)	-69%
Dept. of Family Services Grant	214,000	214,000	214,000	214,000	\$ -	0%
TOTAL	\$ 4,141,300	\$ 3,846,000	\$ 3,408,300	\$ 3,273,600	\$ (572,400)	-14.9%

Total County Contribution:
\$3,273,600

County grant decreases by -
\$572,400 under FY 2025 budget

VLT Grant decreased from \$637,700 to \$200,000

Revenues by Category

Category	FY 2024 Actual	FY 2025 Budget	FY 2025 Estimate	FY 2026 Proposed	Change FY25-FY26	
					Amount (\$)	Percent (%)
County Grant - County Executive	\$1,989,600	\$1,694,300	\$1,694,300	\$1,609,600	\$(84,700)	-5.0%
County Grant - Reentry Program	300,000	300,000	300,000	300,000	—	0.0%
County Grant - Video Lottery Terminal Grant	637,700	637,700	200,000	200,000	(437,700)	-68.6%
County Grant - Returning Citizens Affairs Division	1,000,000	1,000,000	1,000,000	950,000	(50,000)	-5.0%
Department of Family Services Grant	214,000	214,000	214,000	214,000	—	0.0%
DHCD Community Development Block Grants	—	—	390,000	—	—	0.0%
Governor's Summer Youth Connection	304,171	249,000	261,100	235,000	(14,000)	-5.6%
Maryland American Rescue Plan Act (ARPA)	2,466,367	500,000	3,300,000	500,000	—	0.0%
Prince George's American Rescue Plan Act (ARPA)	2,727,679	—	3,965,000	—	—	0.0%
Racing Commission	200,000	200,000	200,000	200,000	—	0.0%
Blueprint for Success	2,774,311	6,615,100	11,270,000	6,800,000	184,900	2.8%
Work Innovation Opportunity Act Grant-Adult Grant	2,662,050	2,628,000	2,585,500	2,100,000	(528,000)	-20.1%
Work Innovation Opportunity Act Grant-Dislocated Worker Grant	2,205,450	1,441,000	1,752,000	1,500,000	59,000	4.1%
Work Innovation Opportunity Act Grant-Youth Grant	2,412,898	2,844,000	3,753,500	2,200,000	(644,000)	-22.6%
Maryland Department of Labor Grant	—	—	147,000	—	—	0.0%
Total	\$19,894,226	\$18,323,100	\$31,032,400	\$16,808,600	\$(1,514,500)	-8.3%

STAFFING

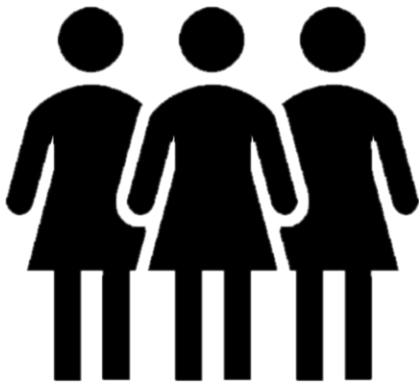
COUNTY
FUNDED
FULL-TIME 22

GRANT
FUNDED
FULL-TIME 95

GRANT
FUNDED
PART-TIME 4

TOTAL: 121

Funding Source	FY 2025 Staff	FY 2026 Staff	Amount Change	% Change
County Full-Time	21	22	1	4.8%
Part-Time	4	4	0	0.0%
Other Full-Time	95	95	0	0.0%
Total	120	121	1	0.8%



Challenges

– Changes in VLT funding has led to changes in staffing and the provision of resources to the American Job Center at National Harbor

– EPG has already halted most of its programming at National Harbor and may have to close the American Job Center there

▪ County's Re-Entry Employment Incentive Program has not yet taken off

▪ No residents have been served by the program

– Currently, businesses choose other EPG incentives over the reentry incentive

The County Council's Re-Entry Advisor Board became defunct after the recommendations were finalized



THANK YOU



David Noto



+1 (301) 952-2769



dbnoto@co.pg.md.us