

Appendix E – Record of Changes

Record of Changes

2017 Plan Section	Heading Section	Changes Made
	Executive Summary	Brief description of update
	1.1 Authority	Abbreviated FEMA regulatory history from 2010 plan update
	1.2 Planning Area	Plan areas for Prince George's County changed from small planning units to County Council Districts per direction from Office of Emergency Management
	1.3 Planning Committee Membership	Updated Mitigation Advisory Committee names and agencies
	1.4 Hazard Identification & Risk Assessment	Updated summary
	1.5 Mitigation Goals & Strategies	Updated revised goal, described strategy groupings
	1.6 Capability Assessment, Implementation & Maintenance	Revised to reflect Prince George's County and City of Laurel new General Plans, how HMP will be implemented and maintained.
	1.7 Acknowledgements	Updated
	1.8 Conclusions	Updated
	2.1 Mitigation	Updated
	2.2 The Local Mitigation Planning Impetus	Updated
	2.3 Organization of the Plan	Updated
	3.1 Planning Process	Process description revised
	3.1.3 Incorporation of Existing Plans and Studies	Updated to include new general plan information
	3.2 Community Profile	New section. Revised US Census, American Community Survey and General Plan demographic information and data
	3.2.1 Introduction	Updated Introduction to reflect new 2015 TIGER Census data.
	3.2.2 Physiography	Information expanded.
	3.2.3 Hydrology	Information expanded.
	3.2.4 Climate	Information expanded.
	3.2.5 Land Use and Development Trends	Updated to reflect land use as of the publication date of the Prince George's County General Plan (2014) and City of Laurel's 2016 General Plan.
SECTION I. EXECUTIVE SUMMARY		
SECTION II. INTRODUCTION		
SECTION III. PLANNING PROCESS AND COMMUNITY PROFILE		

Record of Changes

2017 Plan Section	Heading Section	Changes Made
SECTION III. PLANNING PROCESS AND COMMUNITY PROFILE	3.2.6 Population	Updated section to reflect current estimates from the 2015 TIGER Census data.
	3.2.7 Housing	Updated section to reflect current estimates from the 2015 TIGER Census data.
	3.2.8 Business and Labor	Created section and listed of major employers.
	3.2.9 Transportation	Created section.
	3.2.10 Infrastructure	Created section.
	Introduction	Hazards reorganized per MEMA HMP guidelines
	Summary of Changes	General update described
	Hazard Identification	Updated
	Vulnerability Assessment Overview	Updated
	1 - Flood Related Hazards	Updated
SECTION IV. HIRA	Flooding	new FIRM and FIS data, TEJF 2.0 analysis for 1 % and 0.2% flood hazard risk
	Coastal Flooding	Updated with SLR information
	Severe Storms (Flood-Related)	Updated
	Flood Risk - Dam Failures	Updated based on Laurel and Prince George's County data
	Flood Risk - Levee Failures	Updated
	2 - Wind Related Hazards	Updated
	Tornadoes	Updated
	Severe Storms (Wind-Related)	Updated
	High Winds	Updated
	Hurricanes/Tropical Storms (Wind-Related)	Updated
	Winter Storms/Blizzards	Updated
	3 - Fire Related Hazards	Updated
	Wildfire	Updated
	Drought	Updated
	4 - Geologic Hazards	Updated
	Earthquakes	Hazard added and assessed.
	Land Movement	Data and text Updated.
Sinkholes	Hazard added and assessed.	
5 - Extreme Temperature Hazards	Updated	
Extreme Heat	Updated	
Extreme Cold	Updated	
Summary/Conclusions on Vulnerability Assessment	Revised to reflect new analytical analysis with Updated hazard data.	

Record of Changes

2017 Plan Section	Heading Section	Changes Made
SECTION V. MULTIPLE HAZARD MITIGATION STRATEGY	5.1 Introduction	Explains update
	5.2 Existing policies and authorities	Updated
	5.3 Setting Mitigation Goals	2017 - 2022 goal update
	5.4 Selecting policies and prioritizing	Process Update described
	5.5 Developing Strategies	Process Update and new strategies category organization presented
	5.6 Implementation of ongoing actions	Introduces Section 6.0
SECTION VI. PLAN IMPLEMENTATION AND MAINTENANCE	6.1 County Government Structure	Capability analysis and program update
	6.2 Summary of Existing Mitigation Activities	Summarizes recent HMA projects and other work
	6.3 Plan Implementation and Maintenance	Update includes annual MAC meeting, reporting and continued outreach
SECTION VII. ADDITIONAL STATE REQUIREMENTS	State Requirements	References two MEMA HMP guides
	8.1 Community Profile	New section. Basic information taken from 2011 Plan.
SECTION VIII. CITY OF LAUREL PLAN	8.1.1 Land Use and Development Trends	Updated to reflect land use as of the publication date of the Laurel's 2016 Master Plan.
	8.1.2 Population	Updated section to reflect current estimates from the 2015 TIGER Census data.
	8.1.3 Housing	Updated section to reflect current estimates from the 2015 TIGER Census data.
	8.1.4 Business and Labor	Created section and listed of major employers.
	8.1.5 Transportation	Created section.
	8.1.6 Infrastructure	Created section.
SECTION IX. REFERENCES	List of References	Updated to include demographic sources and revised local general plans

Appendix F – Sample Adoption Resolutions

Resolutions of Adoption

COUNTY COUNCIL OF PRINCE GEORGE'S COUNTY, MARYLAND
2010 Legislative Session

Resolution No.

Proposed by

Introduced by

Co-Sponsors

Date of Introduction

RESOLUTION

A RESOLUTION concerning

Hazard Mitigation Plan

For the purpose of adopting the County-wide Hazard Mitigation Plan as required by the Federal Emergency Management Agency in order to be eligible for Federal assistance for any natural hazards.

WHEREAS, the Robert T. Stafford Disaster Relief and Emergency Assistance Act, at 42 U.S.C. § 5165, and 44 CFR Part 201.6 of the Federal Disaster Mitigation Act of 2000, require the County to adopt a mitigation plan in order to be eligible for grants to implement certain mitigation projects; and

WHEREAS Prince George's County has experienced past flooding and other natural hazard events that pose risks to public health and safety, may cause serious property damage, and a plan is needed to address the results of these events; and

WHEREAS the planning process fostered by the Maryland Emergency Management Agency and set forth by the Federal Emergency Management Agency offers the opportunity to consider natural hazards and risks, and to identify mitigation actions to reduce future impacts of such hazards; and

WHEREAS the State of Maryland has provided federal Hazard Mitigation Assistance program funds to support development of the mitigation plan; and

WHEREAS a Hazard Mitigation Plan (the "Plan") has been updated by the Mitigation Action Committee and staff from County departments and other entities; and

WHEREAS the Hazard Mitigation Plan recommends several mitigation actions that will help minimize and reduce safety threats and damage to private and public property; and

WHEREAS a public meeting was held on _____, 2017, to present the Plan and proposed mitigation actions and to solicit questions and comments.

NOW THEREFORE BE IT RESOLVED by the County Council of Prince George's County, Maryland, that the Hazard Mitigation Plan is hereby adopted as an official plan of Prince George's County.

BE IT FURTHER RESOLVED that the County offices identified in the Plan are hereby directed to pursue implementation of the recommended priority actions that are assigned to their agencies.

BE IT FURTHER RESOLVED that any action proposed in the Plan shall be

subject to and contingent upon budget approval, if funding is required, and this resolution may not be interpreted so as to mandate any such appropriations.

BE IT FURTHER RESOLVED that the Prince George's County Department of Environmental Resources is designated to coordinate with other offices and entities and shall periodically report on the activities, accomplishments, and progress, and shall prepare a progress report as required by the Maryland Emergency Management Agency.

Adopted this _____ day of _____, 2017.

[insert standard signature blocks

RESOLUTION NO. _____

A RESOLUTION TO ALLOW THE CITY OF LAUREL TO ADOPT THE HAZARD MITIGATION PLAN OF PRINCE GEORGE'S COUNTY AS THE CITY'S OFFICIAL PLAN.

Sponsored by the President at the request of the Administration.

WHEREAS the City of Laurel has experienced past flooding and other natural hazard events that pose risks to public health and safety and which may cause serious property damage;

WHEREAS the planning process fostered by the Maryland Emergency Management Agency and set forth by the Federal Emergency Management Agency offers the opportunity to consider natural hazards and risks, and to identify mitigation actions to reduce future impacts of such hazards;

WHEREAS the State of Maryland provided federal Hazard Mitigation Assistance program funds to Prince George's County to support development of a multi-jurisdictional mitigation plan;

WHEREAS a *Hazard Mitigation Plan* has been developed by the Mitigation Action Committee and staff from the City, County departments, and other entities;

WHEREAS the *Hazard Mitigation Plan* recommends several mitigation actions that will help minimize and reduce safety threats and damage to private and public property; and

WHEREAS a public meeting was held on _____, 2017, to solicit questions and comments and to present the plan and the proposed mitigation actions.

NOW THEREFORE BE IT RESOLVED by the City Council of the City of Laurel that:

1. The *Hazard Mitigation Plan* is hereby adopted as an official plan of the City of Laurel.
2. The City offices identified in the Plan are hereby directed to pursue implementation of the recommended priority actions that are assigned to their agencies.
3. Any action proposed in the Plan shall be subject to and contingent upon budget approval, if funding is required, and this resolution shall not be interpreted so as to mandate any such appropriations.
4. The Deputy City Administrator is designated to coordinate with other City offices and Prince George's County and shall periodically report on the activities, accomplishments, and progress, and shall prepare a progress report as required by the Maryland Emergency Management Agency.

AND BE IT FURTHER RESOLVED, that this Resolution shall take effect on its passage

PASSED this _____ day of _____, 2017.
[insert standard signature blocks]

Appendix G – REDACTED

Critical Facilities and Dams

A substantial master workbook of all critical facilities was used as the basis for this summary analysis. It is available upon request from FEMA.

Dam information has also been redacted.

Critical Facilities**Table 1. Critical Facilities by Type and Location**

Facility Type	Prince George's County	City of Laurel
Airport	--	3
Amusement	--	6
Energy	--	10
Federal	--	27
Fire/EMS	2	45
Health	--	12
Military	1	7
Police Station	1	36
Public Safety	--	2
Religious	1	31
School	10	376
State	--	1
Grand Total	15	556

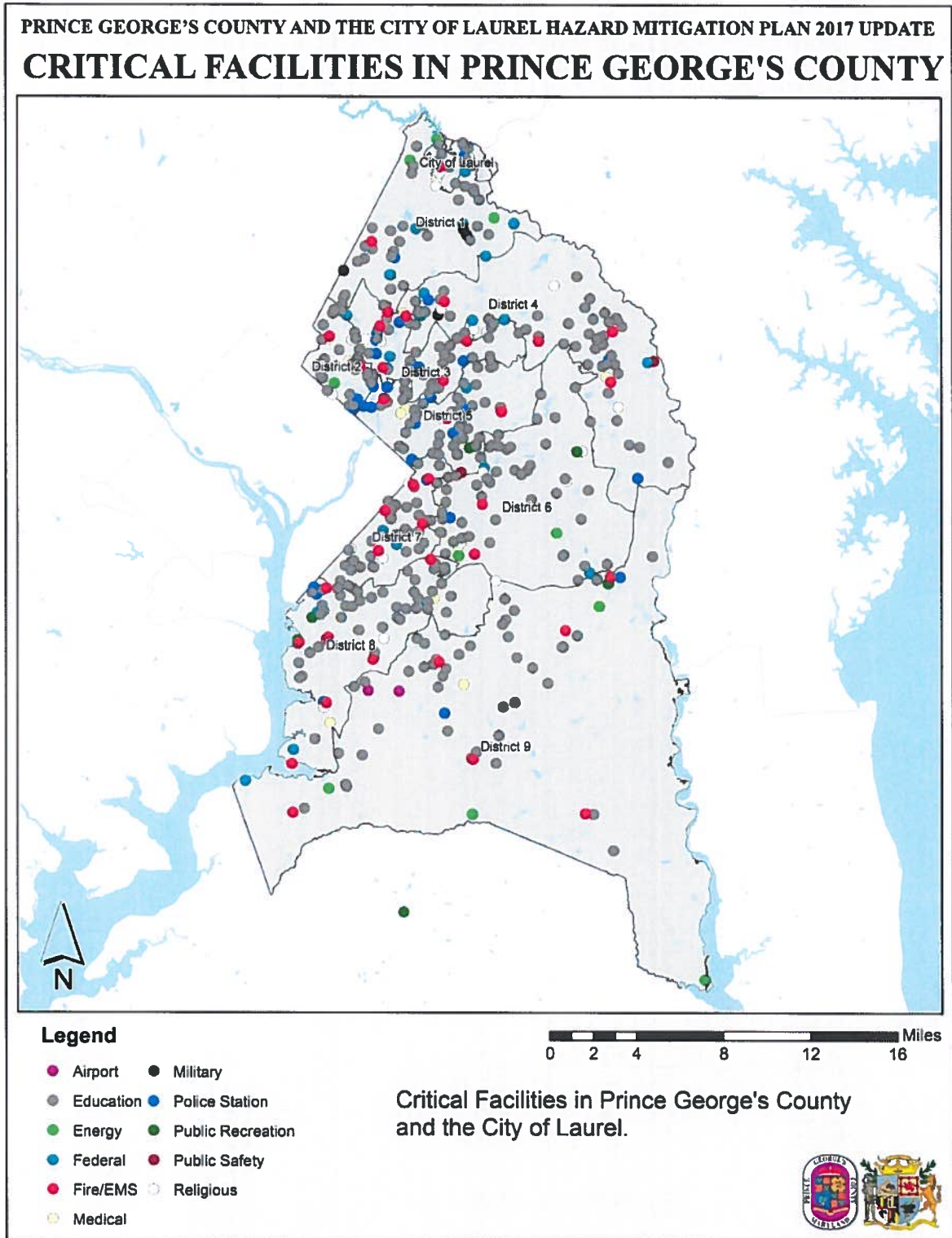


Figure 1. Critical Facility Locations

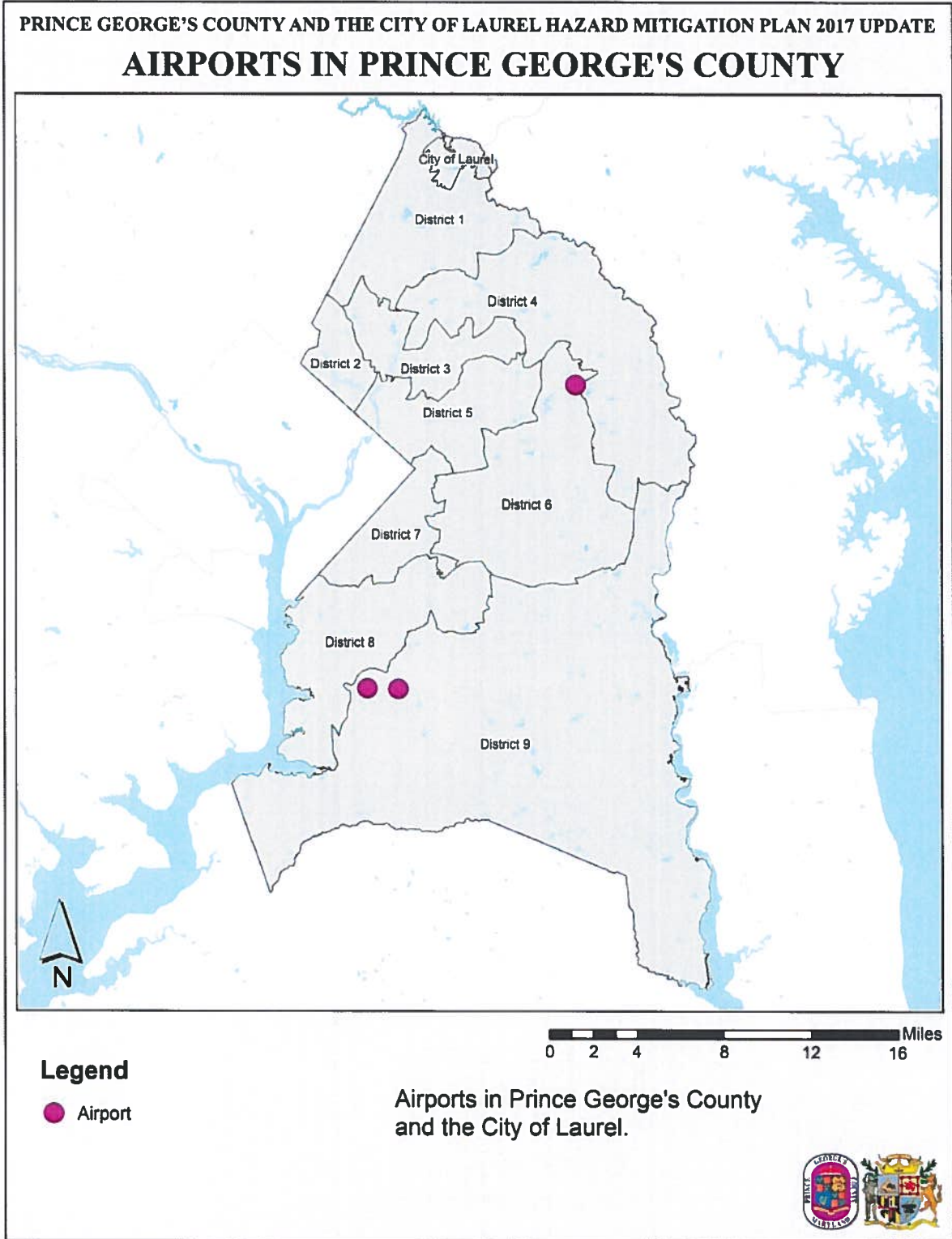


Figure 2. Airport Locations

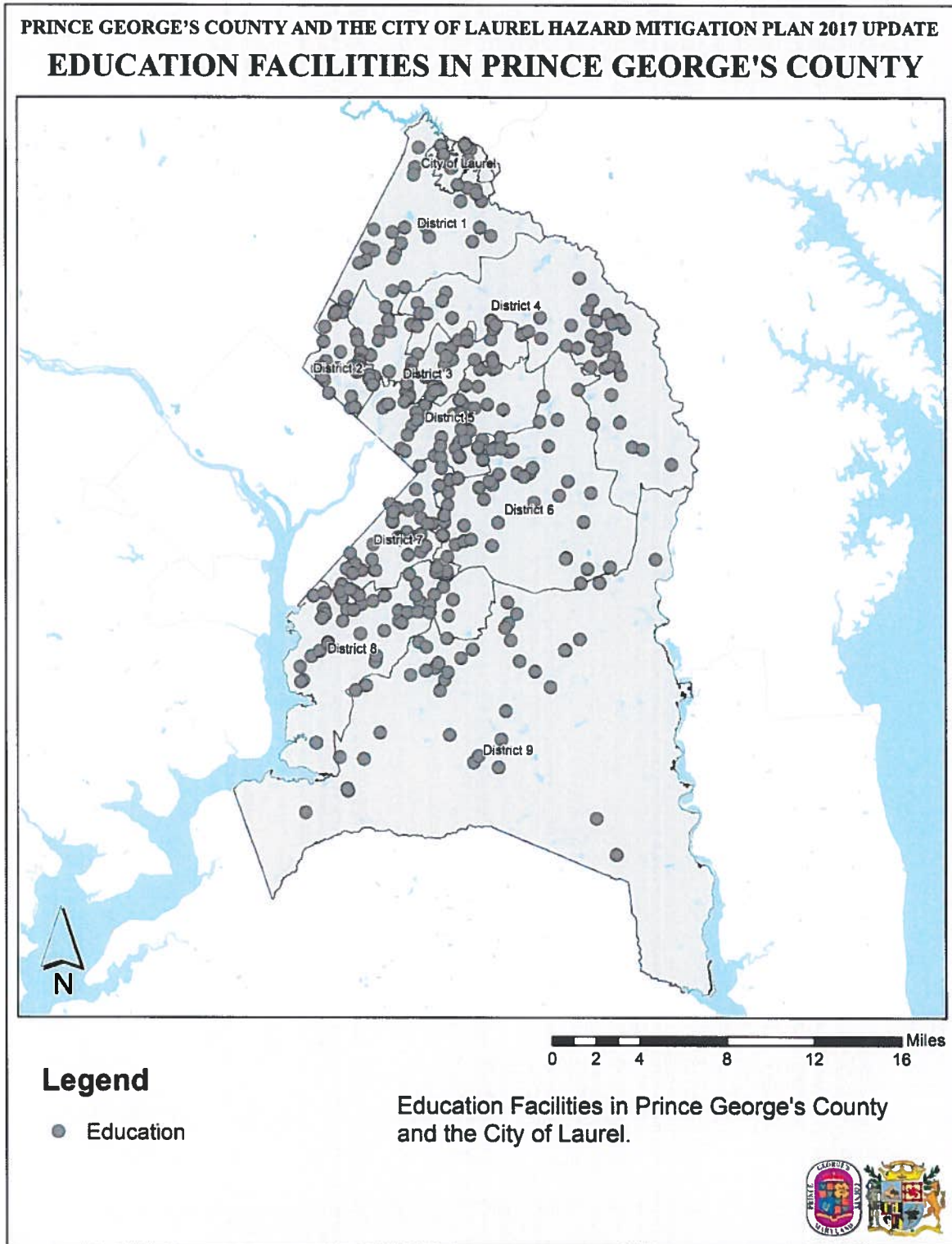


Figure 3. Educational Facility Locations

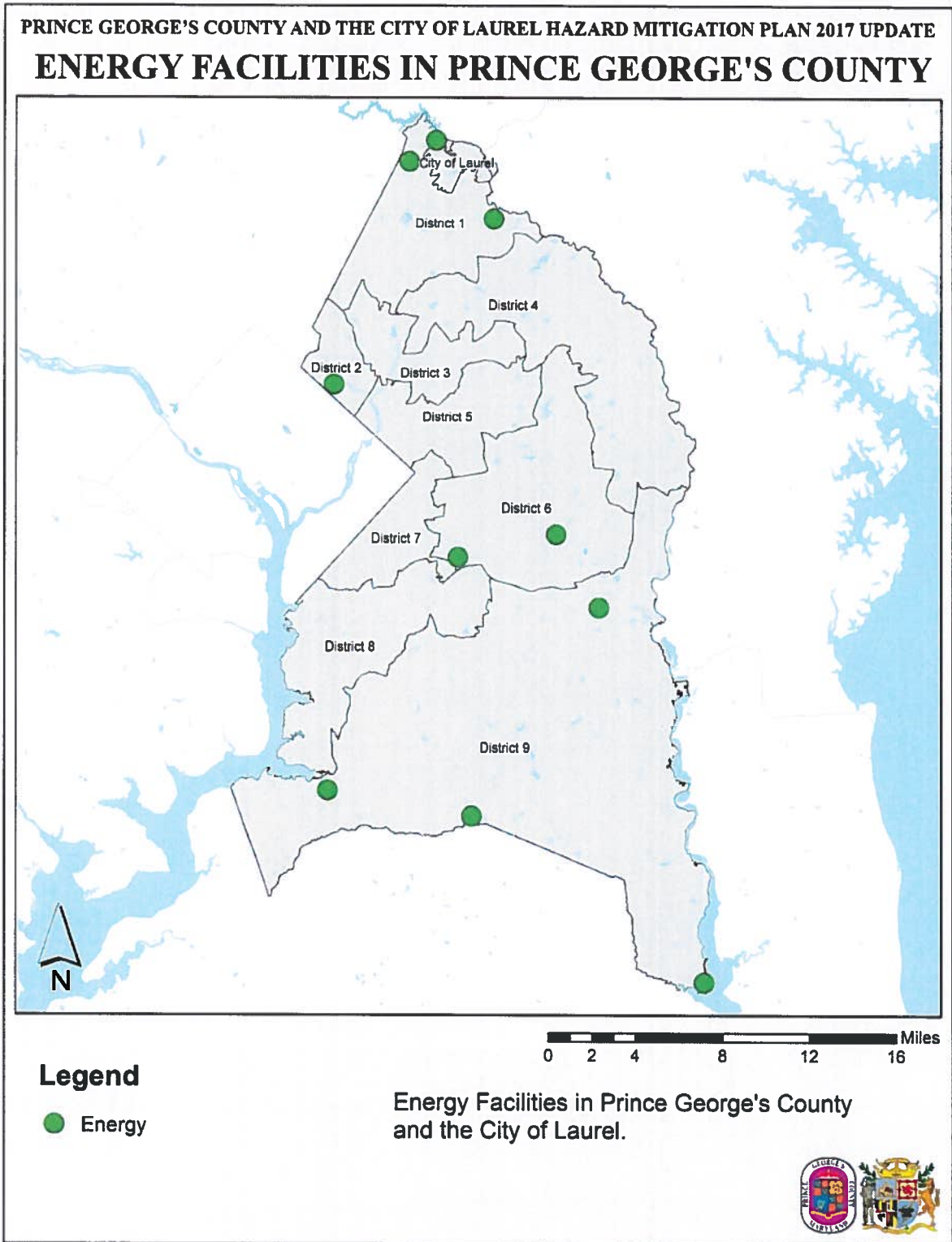


Figure 4. Energy Facility Locations

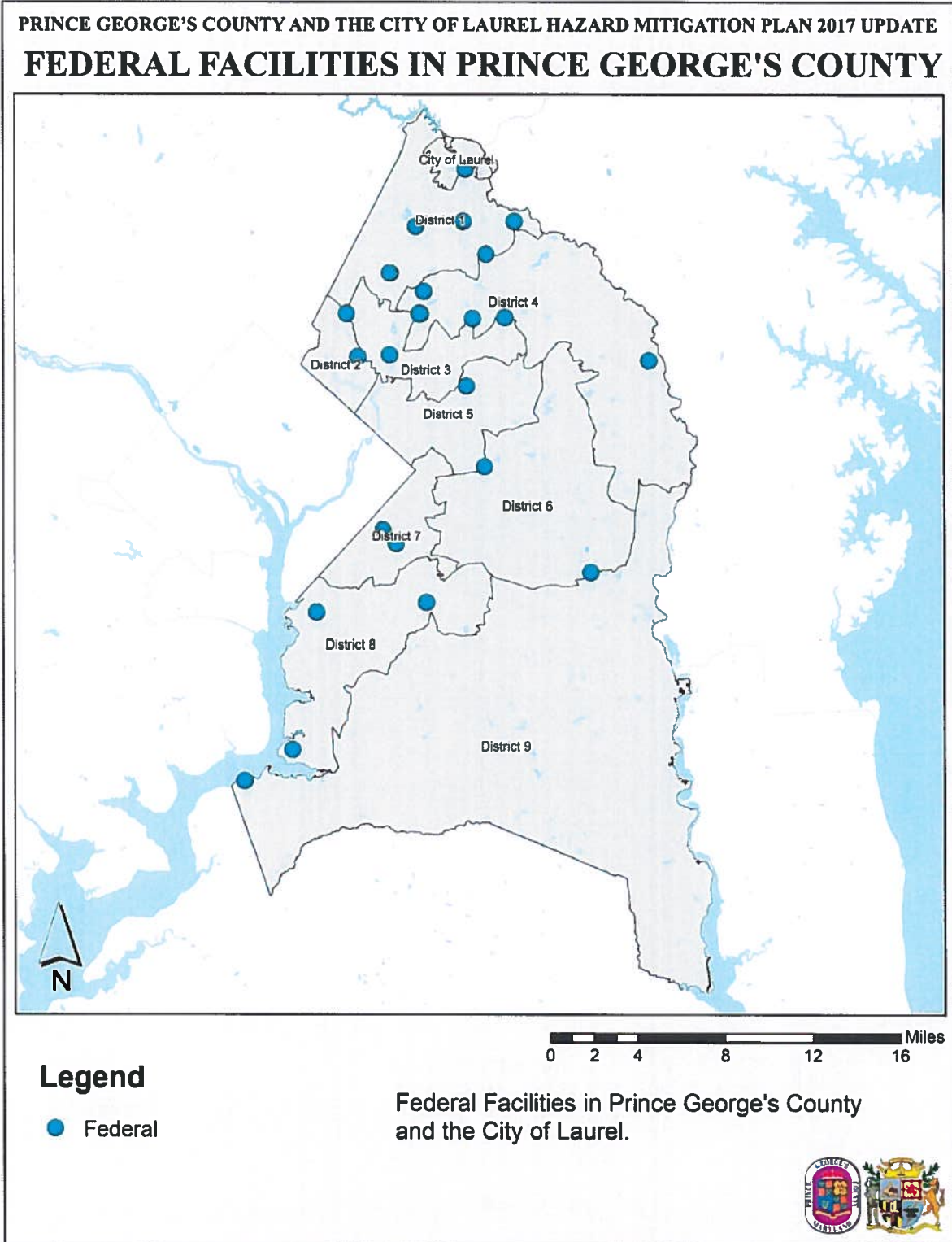


Figure 5. Federal Facility Locations

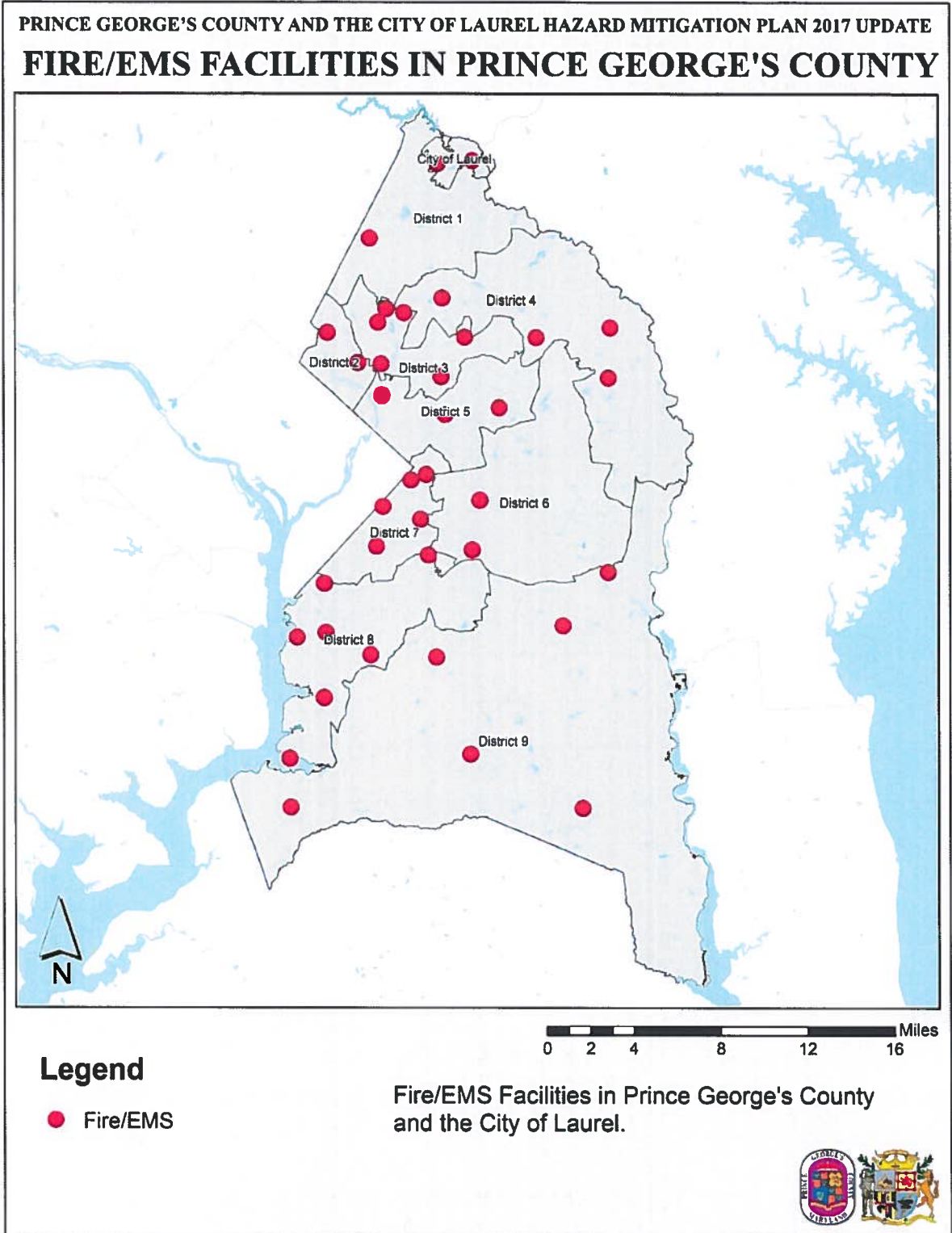


Figure 6. Fire/EMS Facility Locations

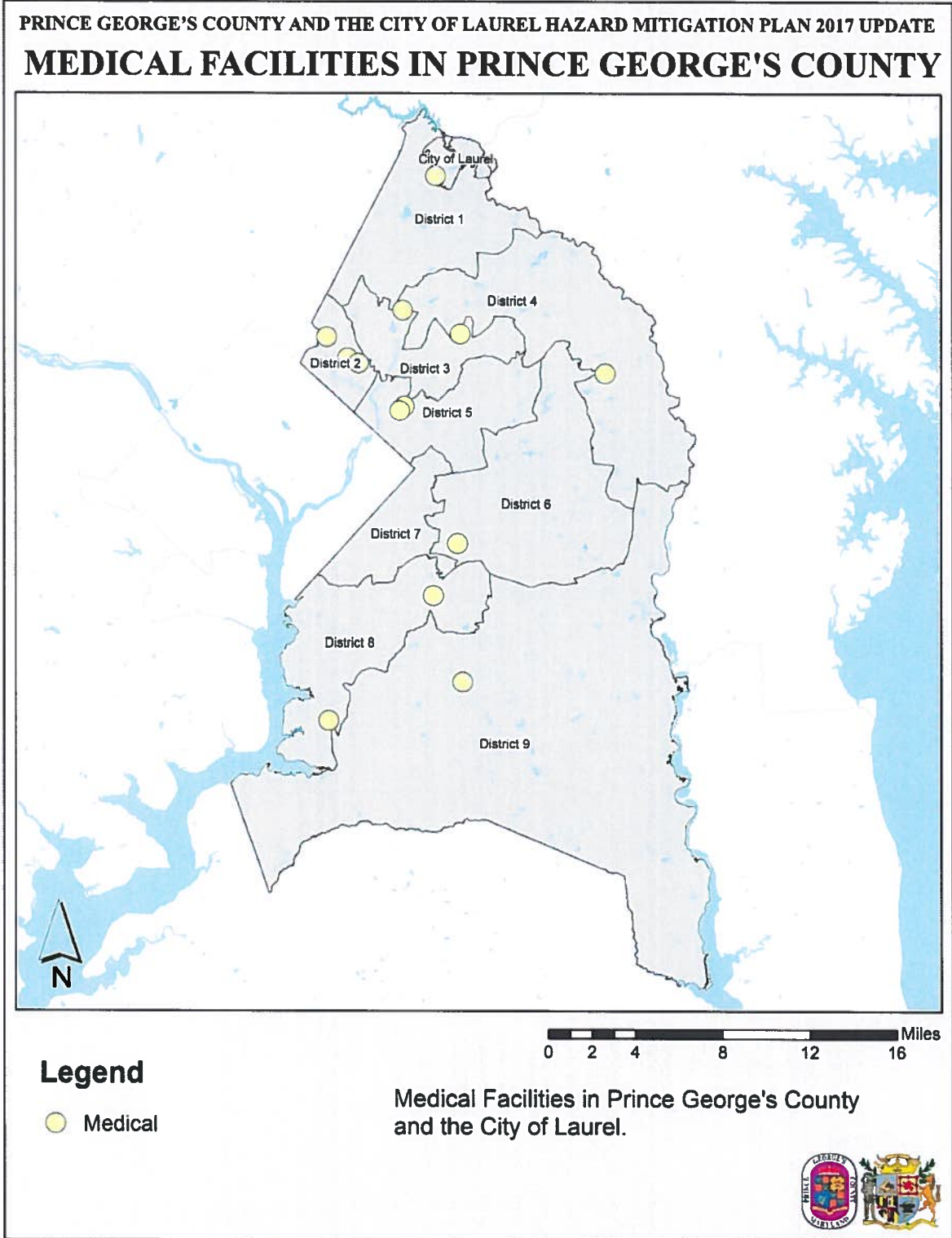


Figure 7. Medical Facility Locations

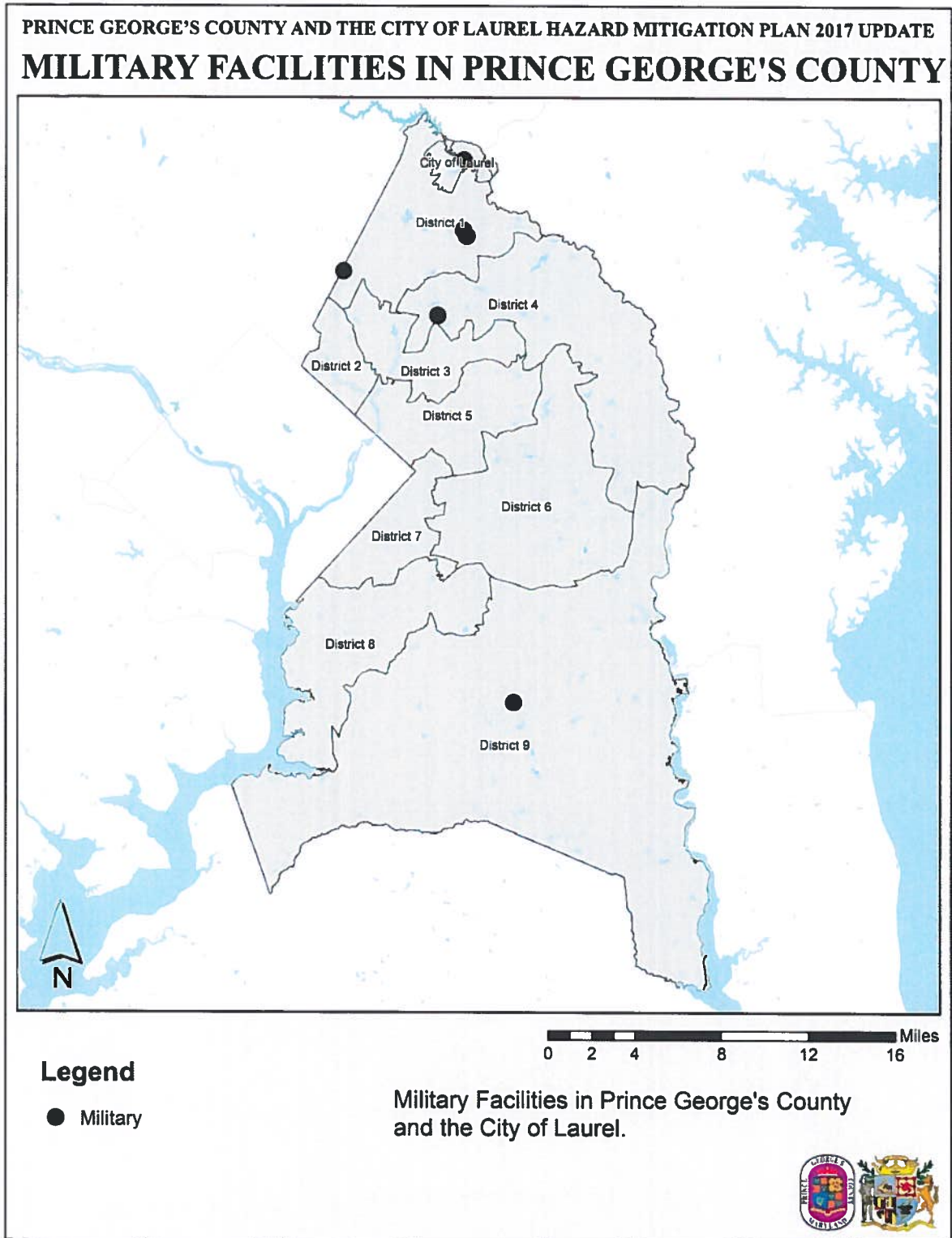


Figure 8. Medical Facility Locations

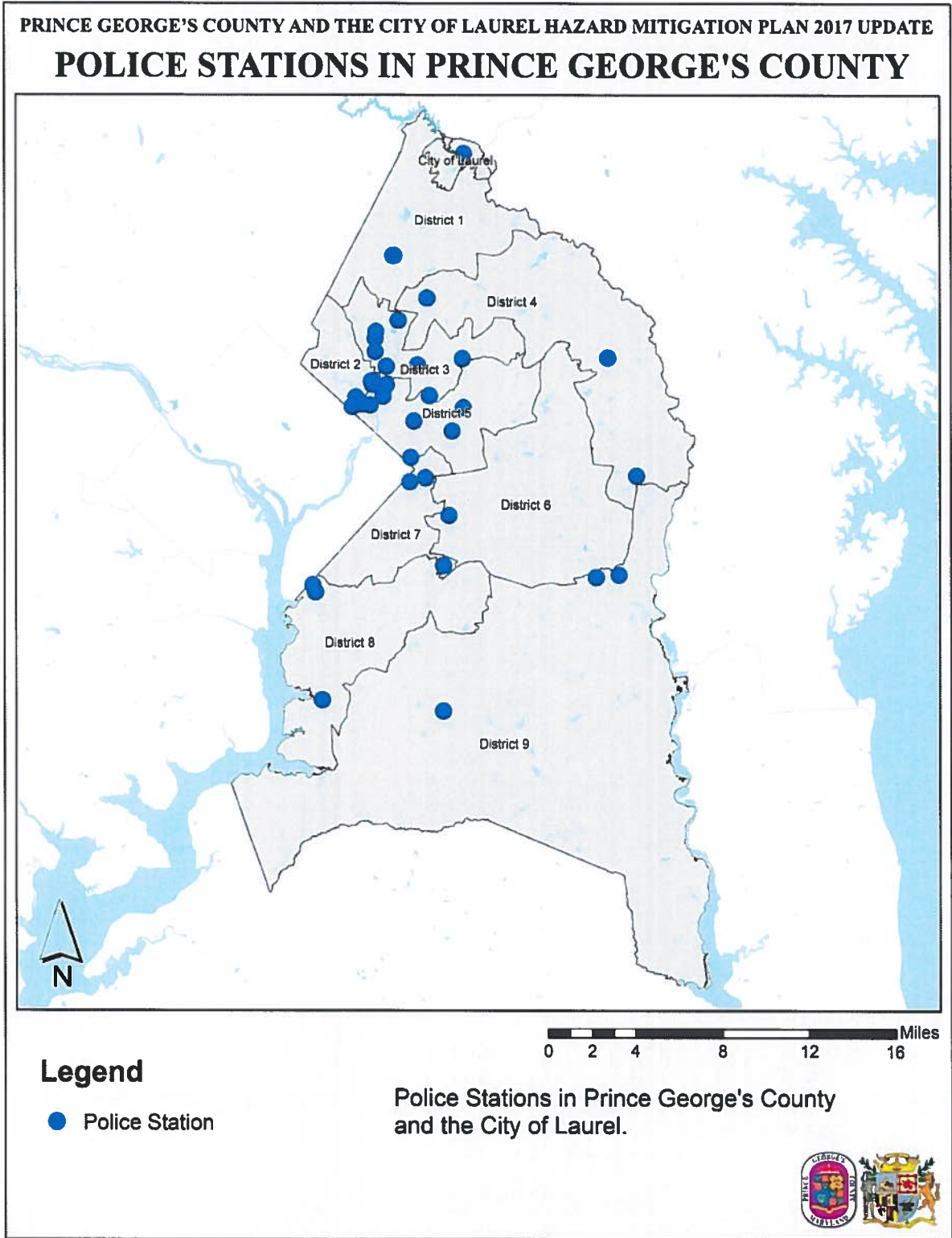


Figure 9. Police Facility Locations

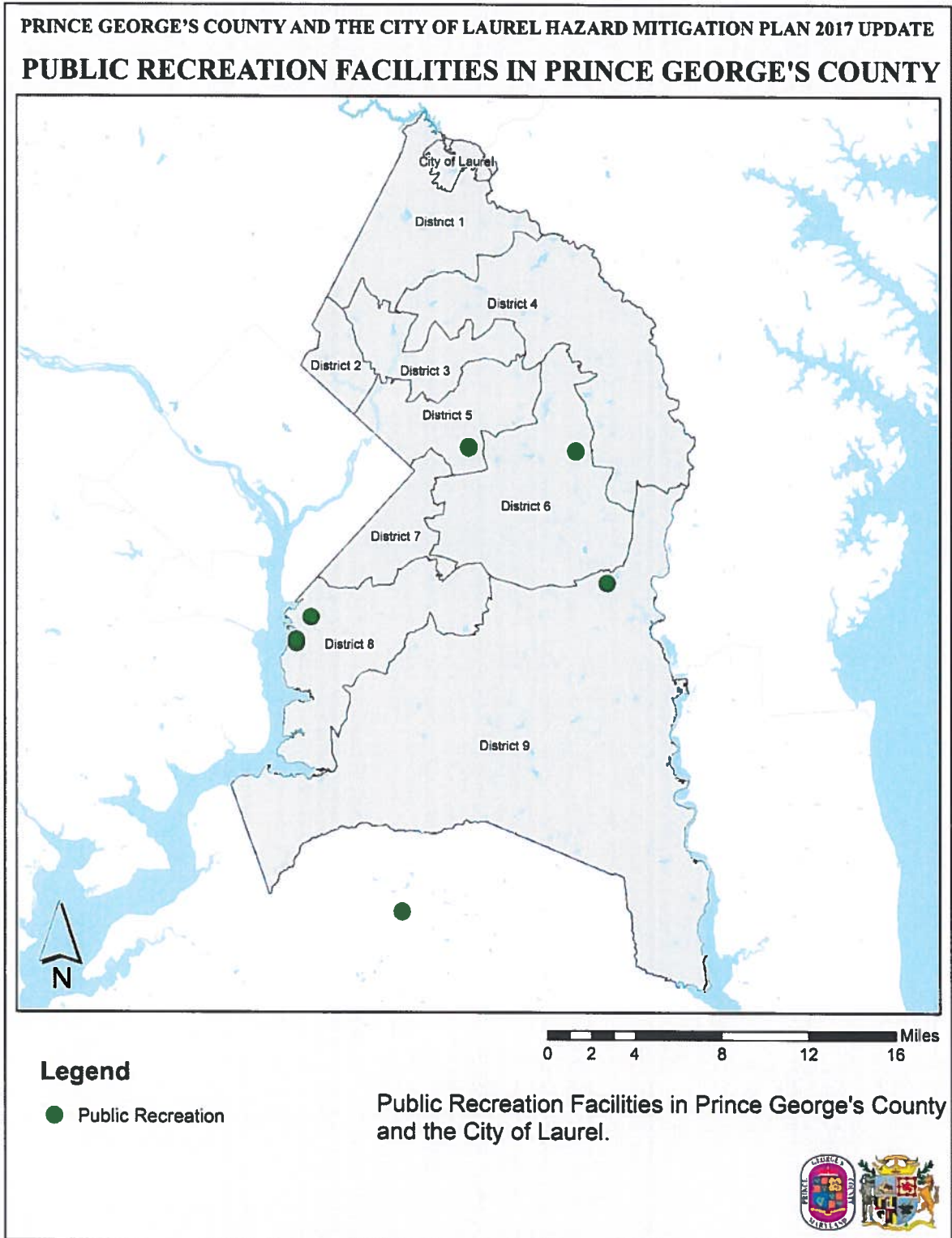


Figure 10. Public Recreation Facility Locations

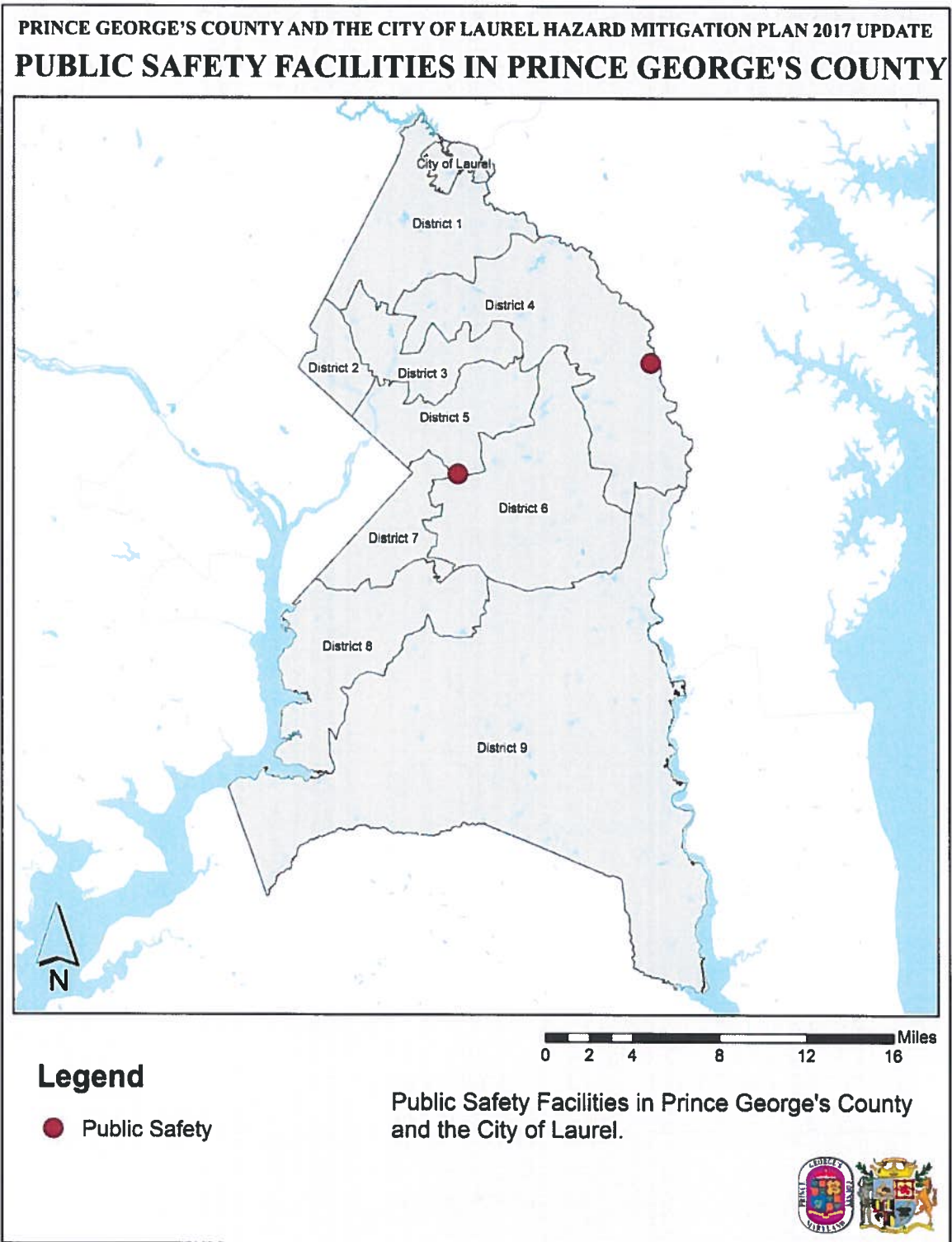


Figure 11. Public Safety Facility Locations

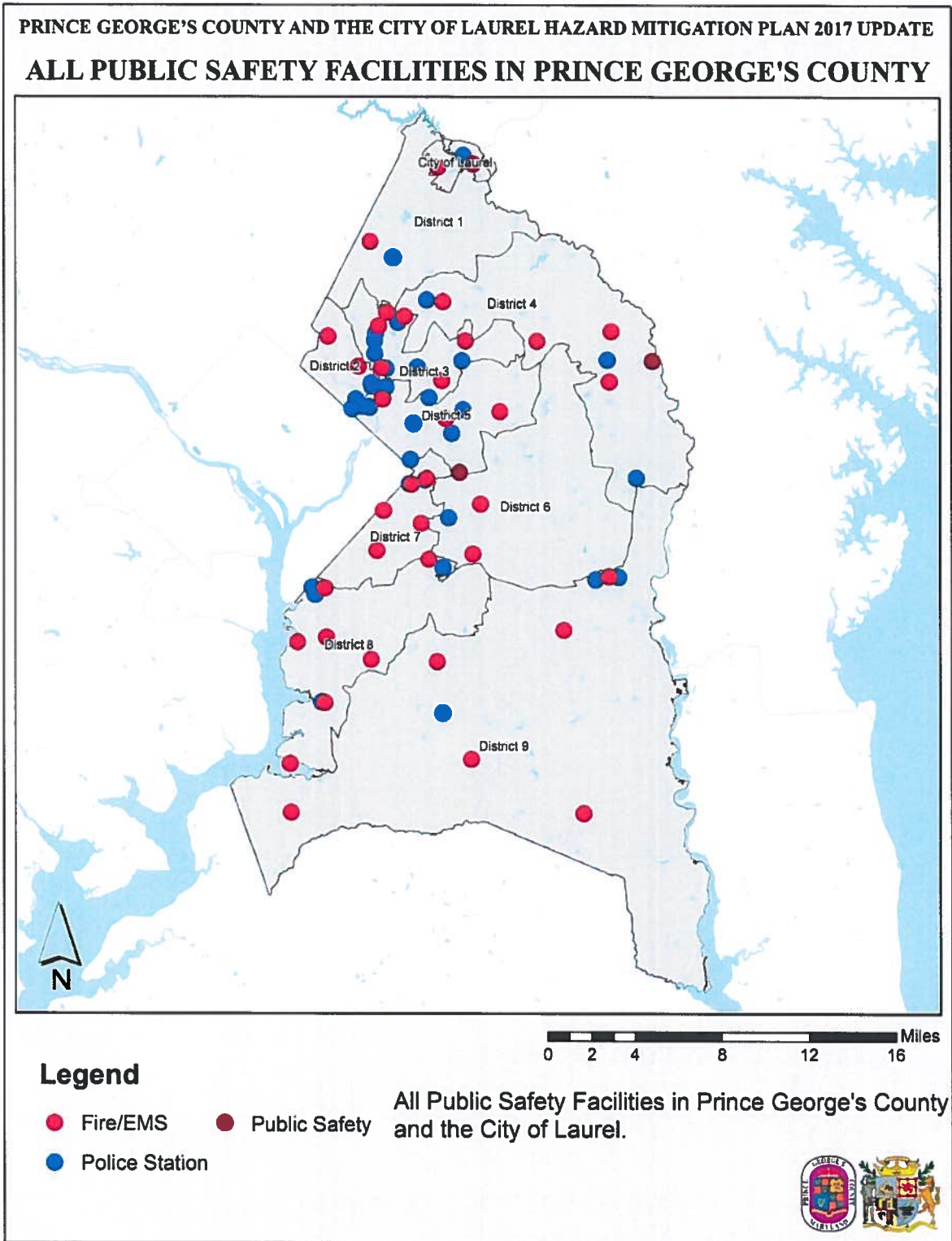


Figure 12. All Public Safety Facility Locations

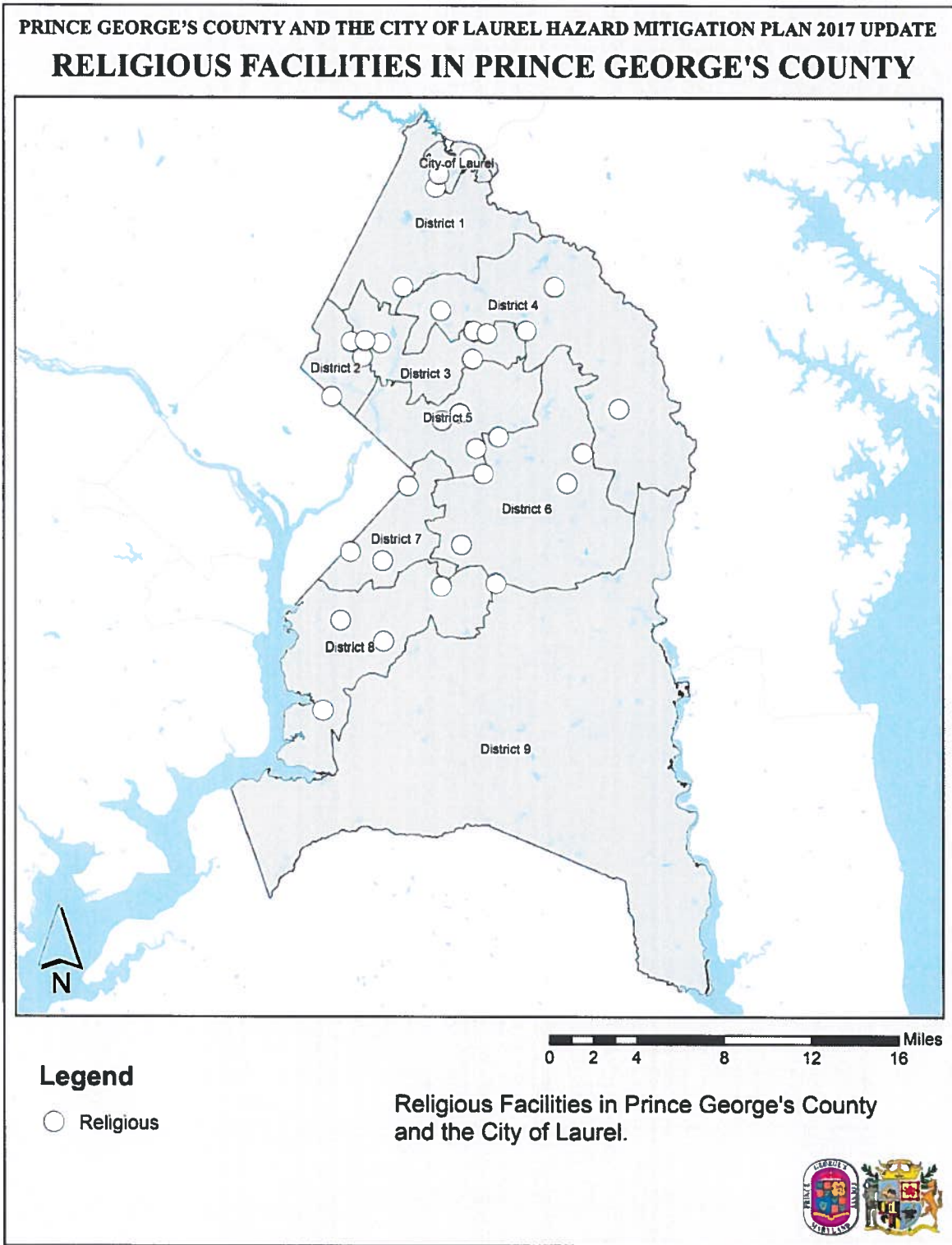


Figure 13. Religious Facility Locations

Dams

Table 2. Duckett Dam – Sunny Day Break Scenario (Lowest Risk)

Political Area	Buildings Affected	Total Exposure Value
City of Laurel	650	\$425,000,000
Council District 1	772	\$487,000,000
Council District 4	125	\$9,210,000
Total	1547	\$921,210,000

Table 3. Brighton and Duckett Dams – Flood Scenario (Highest Risk)

Political Area	Buildings Affected	Total Exposure Value
City of Laurel	2736	\$1,040,000,000
Council District 1	3036	\$1,170,000,000
Council District 4	282	\$10,300,000
Total	6054	\$2,220,300,000

Table 4. Summary of Individual Dam Breach Area Exposure

Dam Breach Area	Political Area	Buildings Affected	Building Exposure
Heritage Glen Dam Inundation Zone	Council District 6	14	\$3,800,000
Indian Creek 2 & 3 Dam Inundation Zone	Council District 1	163	\$38,700,000
Lake Arbor Dam Inundation Zone	Council District 6	99	\$25,300,000
Largo Town Center Dam Inundation Zone	Council District 6	1	\$52,500,000
Laurel Lake Dam Inundation Zone 1	City of Laurel	40	\$44,400,000
	Council District 1	41	\$44,500,000
Laurel Lake Dam Inundation Zone 2	City of Laurel	35	\$62,900,000
	Council District 1	39	\$79,700,000

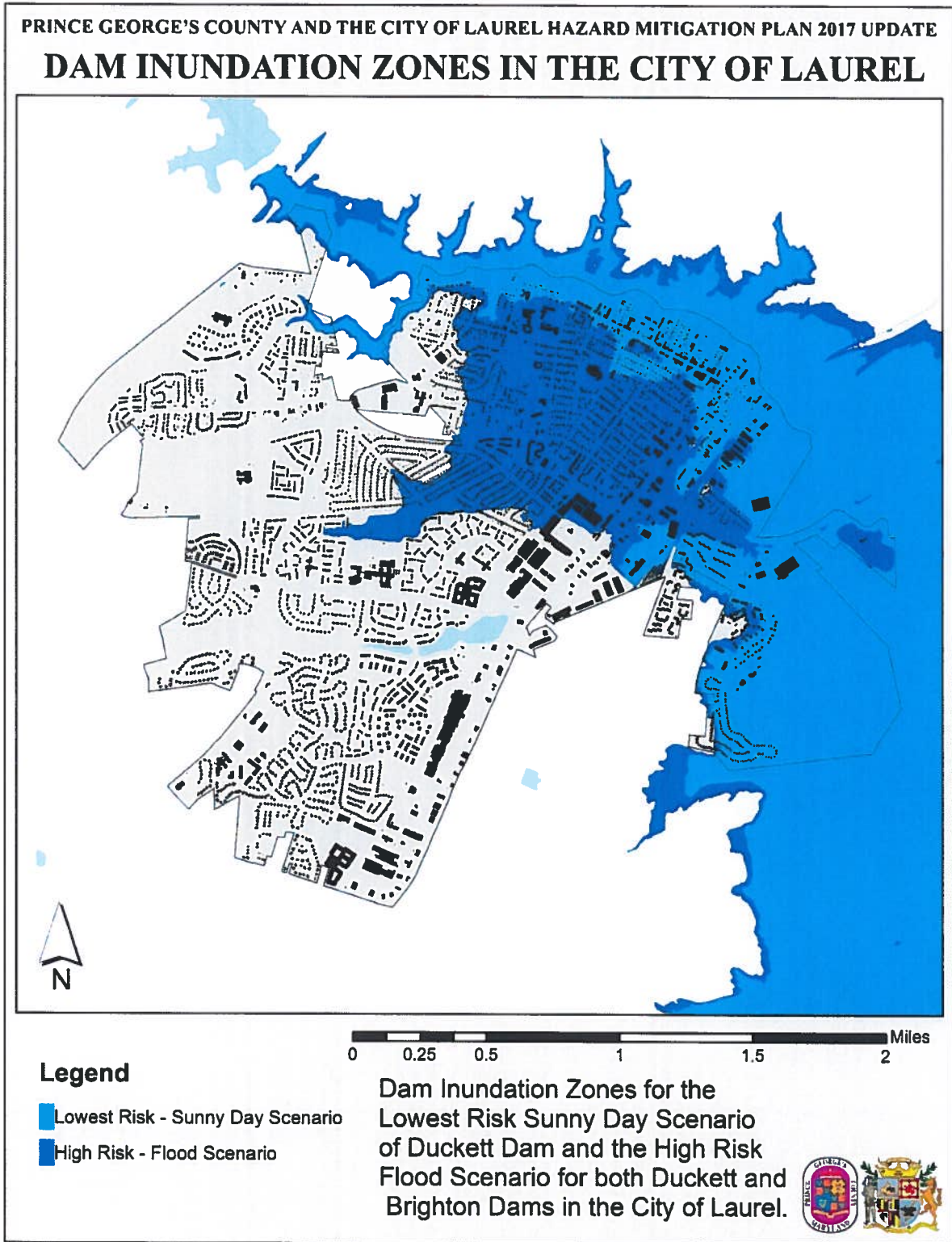


Figure 14. Dam Inundation Zones in City of Laurel

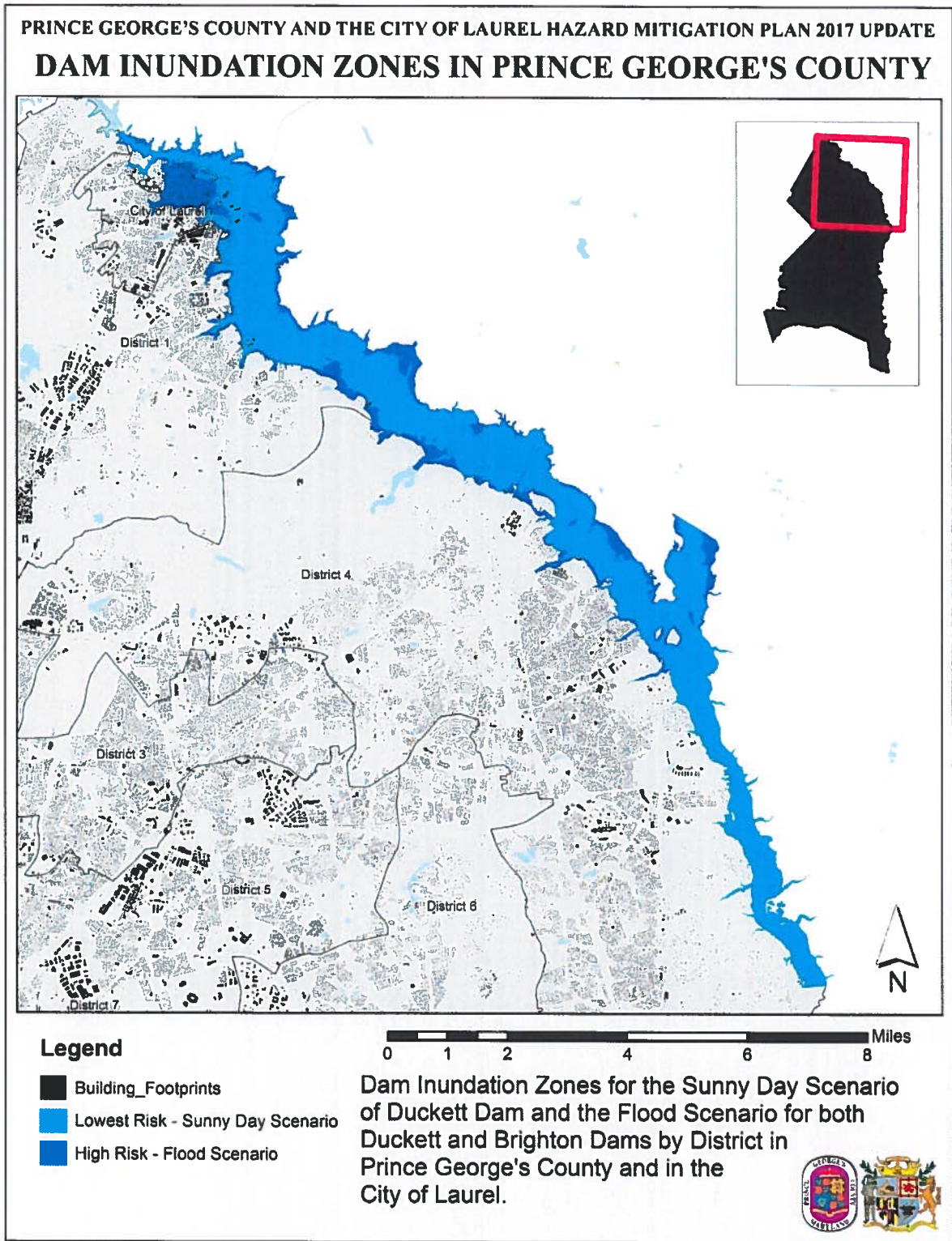


Figure 15. Dam Inundation Zones in Prince George's County

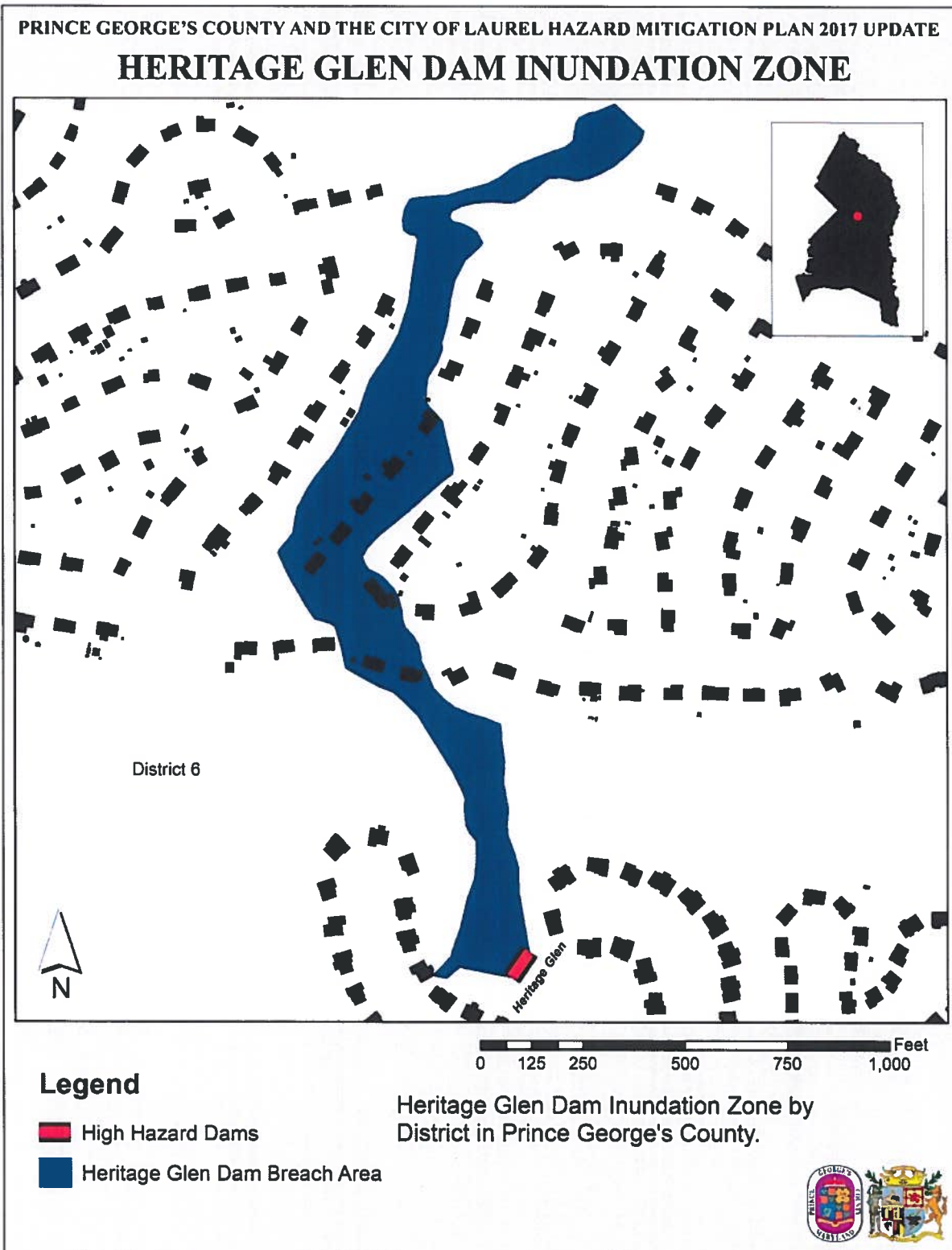


Figure 16. Heritage Glen Dam Inundation Zone

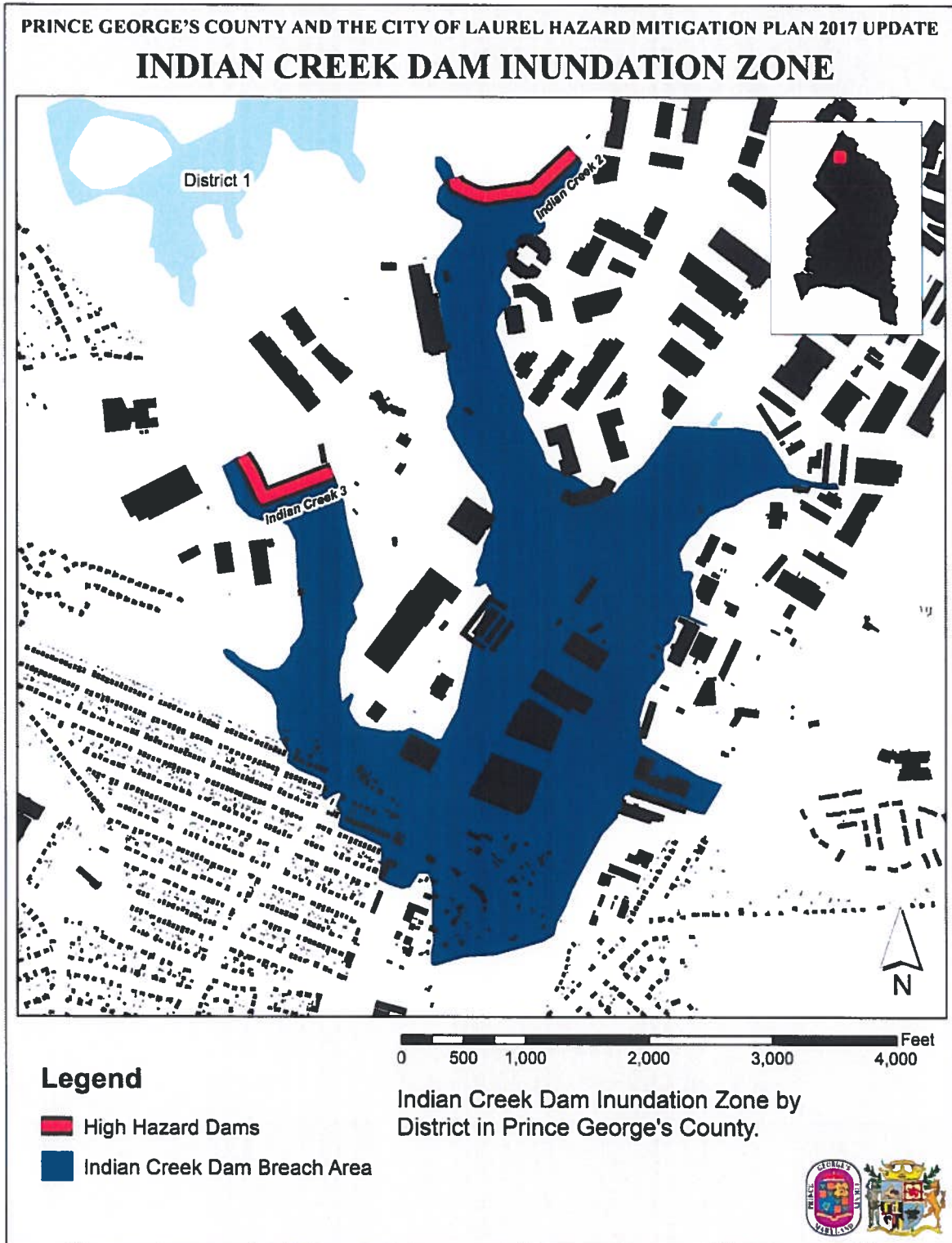


Figure 17. Indian Creek Dam Inundation Zone

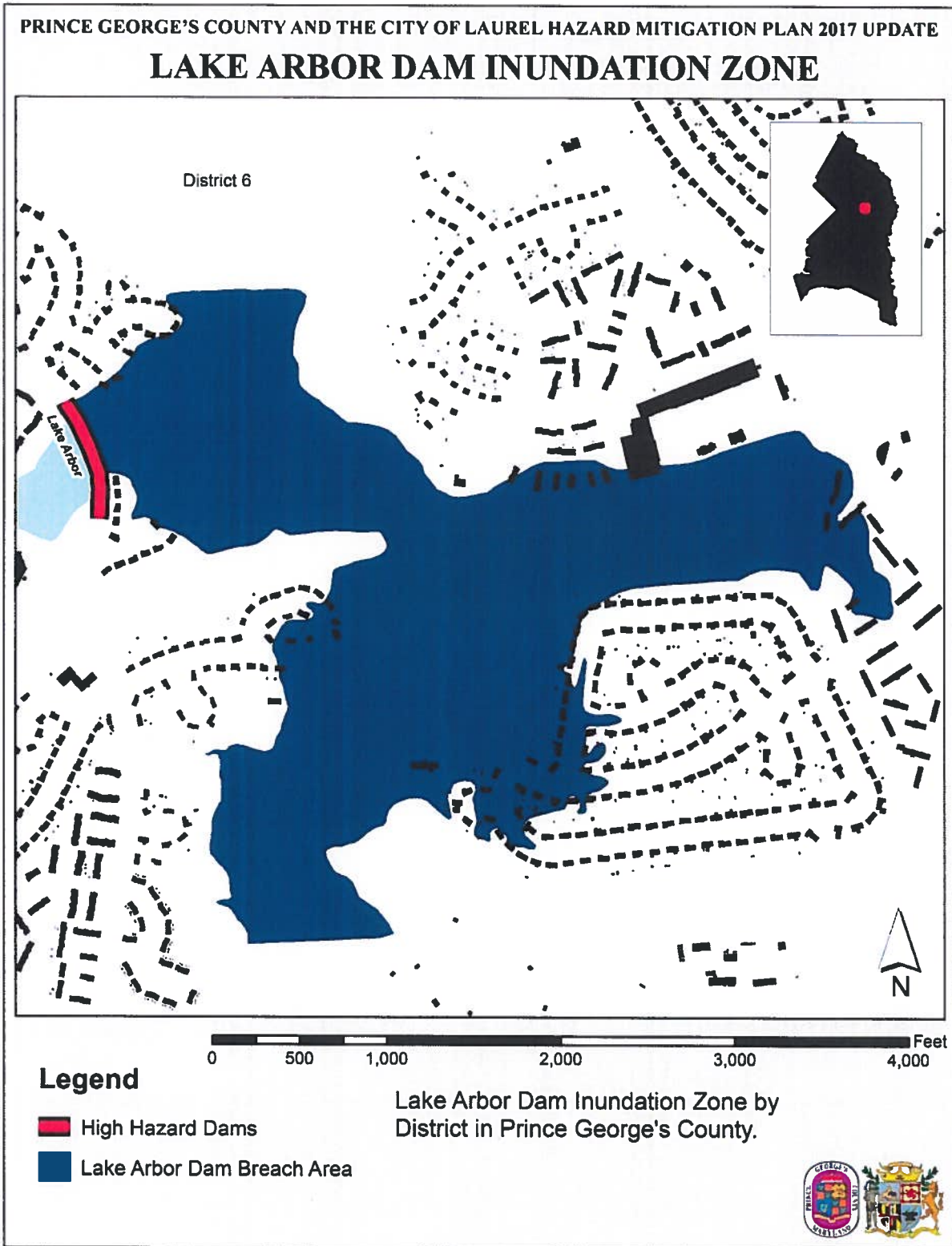


Figure 18. Lake Arbor Dam Inundation Zone

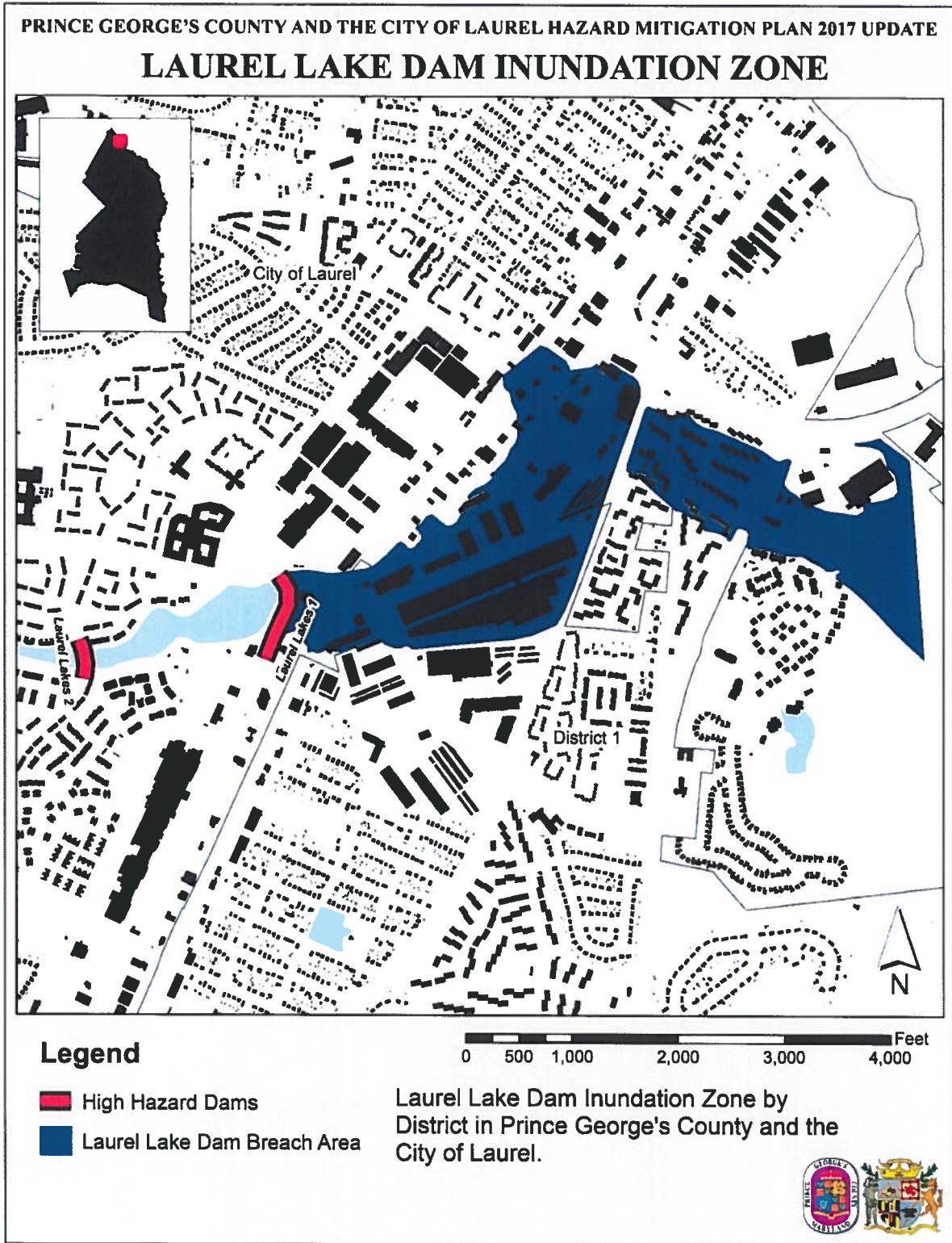


Figure 19. Laurel Lake Dam Inundation Zone

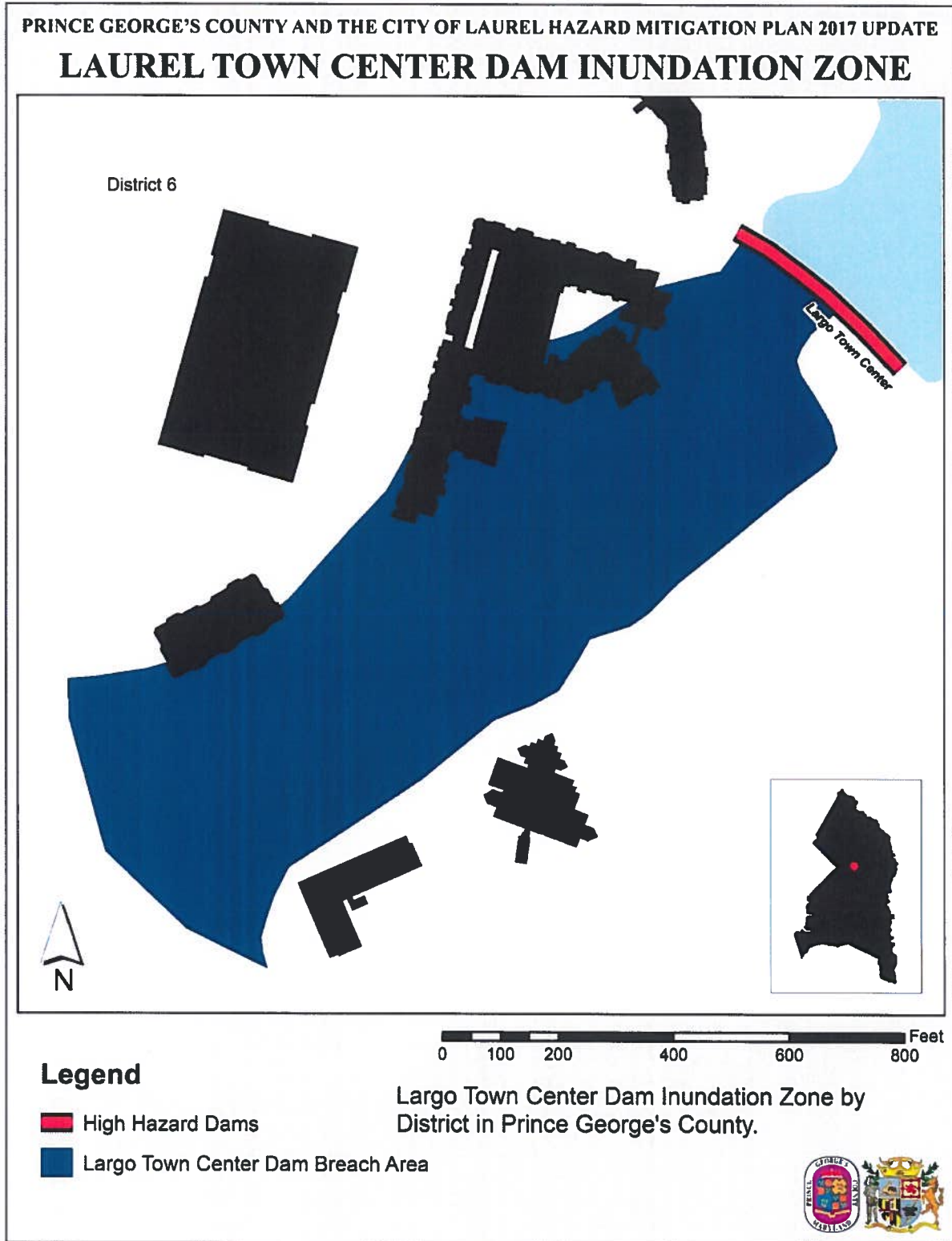


Figure 20. Largo Town Center Dam Inundation Zone

Appendix H List of Abbreviations

BFE	Base Flood Elevation
CIP	Capital Improvement Program
COOP	Continuity of Operations
CRS	Community Rating System
DFIRM	Digital Flood Insurance Rate Map
DMA	Disaster Mitigation Act
EAS	Emergency Alert System
EF Scale	Enhanced Fujita Scale
EMS	Emergency Medical Services
EOC	Emergency Operations Center
FEMA	Federal Emergency Management Agency
FHBM	Flood Hazard Boundary Maps
FIRM	Flood Insurance Rate Map
GIS	Geographic Information System
HAZUS-MH	FEMA's loss estimating software for floods, earthquakes, and hurricane winds
HIRA	Hazard Identification and Risk Assessment
HMGP	Hazard Mitigation Grant Program
MAC	Mitigation Advisory Committee
NCDC	National Climatic Data Center
NFHL	National Flood Hazard Layer
NFIP	National Flood Insurance Program
NLCD	National Land Cover Data
NOAA	National Oceanic Atmospheric and Atmospheric Administration
NWS	National Weather Service
PDC	Planning District Commission
PRISM	Parameter-elevation Regressions on Independent Slopes Model
Risk MAP	Risk Mapping, Assessment, and Planning
RL	repetitive loss
SFHA	Special Flood Hazard Area
SRL	severe repetitive loss
STAPLE/E	Social, Technical, Administrative, Political, Legal, Economic, and Environmental
UASI	Urban Areas Security Initiative
USACE	U.S. Army Corps of Engineers
USGS	U.S. Geological Survey
VA DCR	Virginia Department of Conservation and Recreation
VDEM	Virginia Department of Emergency Management
VDOF	Virginia Department of Forestry
VDOT	Virginia Department of Transportation