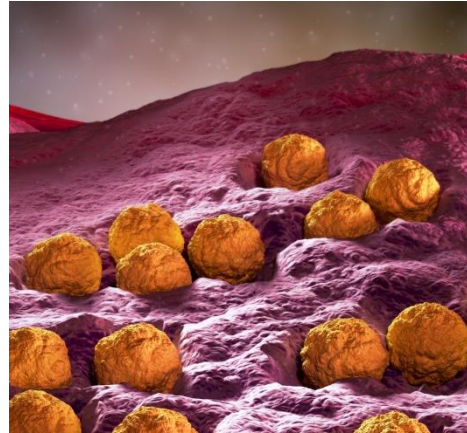


Measles Briefing



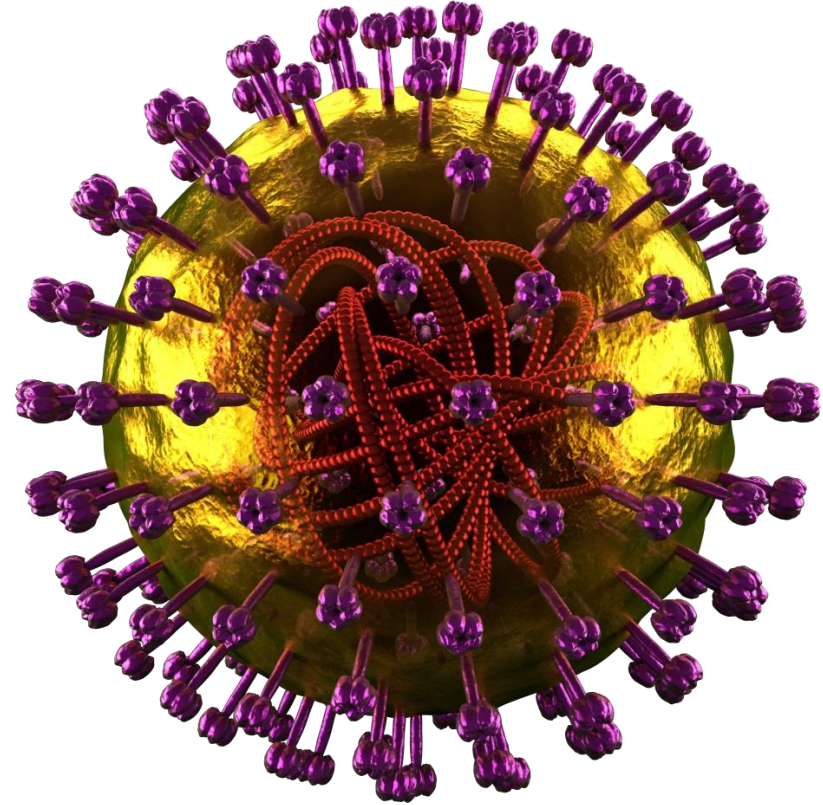
Matthew D. Levy, MD, MPH
Health Officer
March 18, 2025




Prince George's County Council
Health, Human Services and Public Safety Committee



What Is Measles?

- Measles is a highly contagious respiratory disease caused by a virus. In rare cases it can be deadly.
- If one person has it, up to 9 out of 10 people nearby will become infected if they are not protected.



 = not immunized but still healthy  = immunized and healthy  = not immunized, sick, and contagious

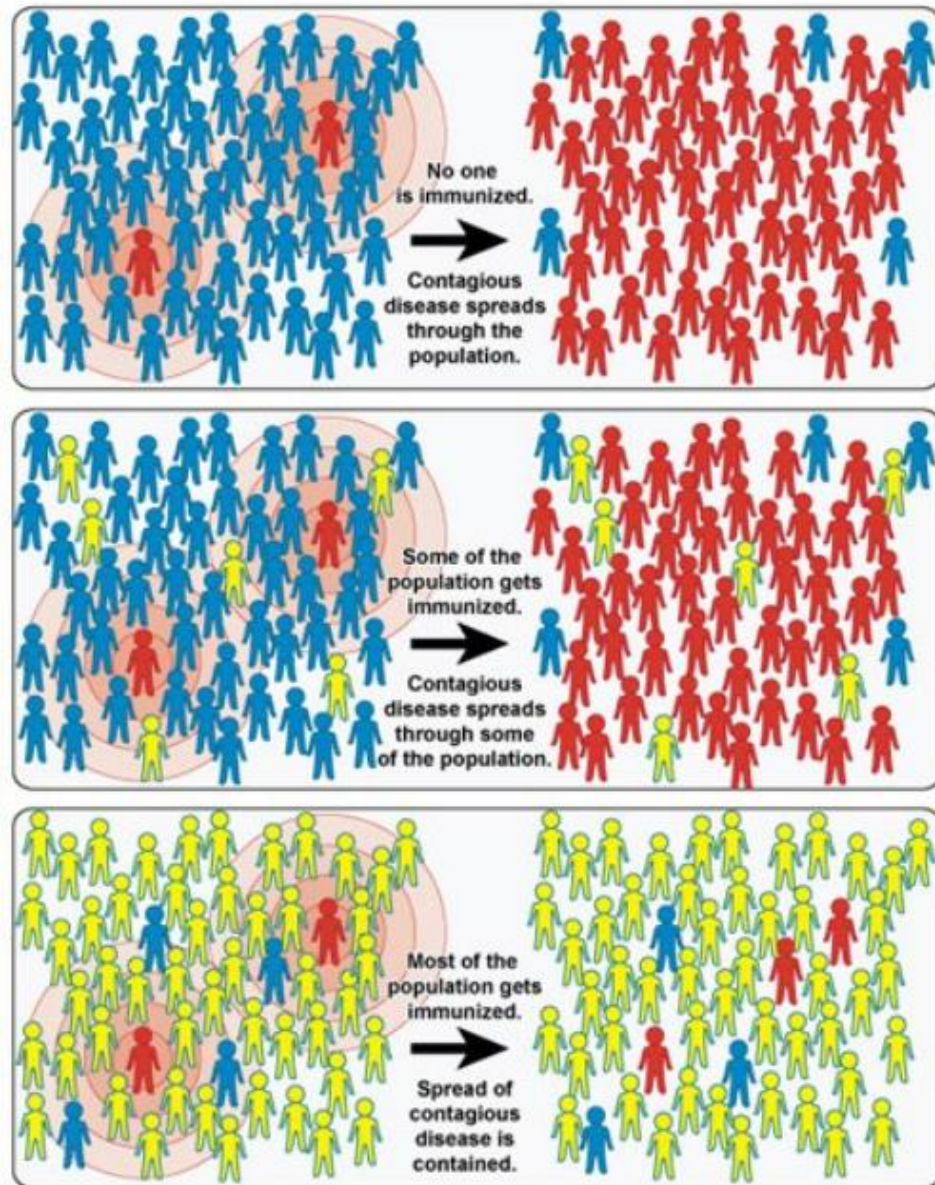
Measles Vaccination – Herd Immunity

Top Panel: In a completely unprotected population, with no prior infection or vaccination, measles is extremely contagious.

- A single person infected with measles is likely to infect another 12-18 if they are in an unprotected population.

Middle Panel: When a small portion of the population is protected, measles is still highly effective at infecting unprotected people.

Bottom Panel: When greater than 95% of the population is protected, measles is much less likely to be infected even unprotected people, including those who can't be vaccinated.



Measles Case Data - 2025

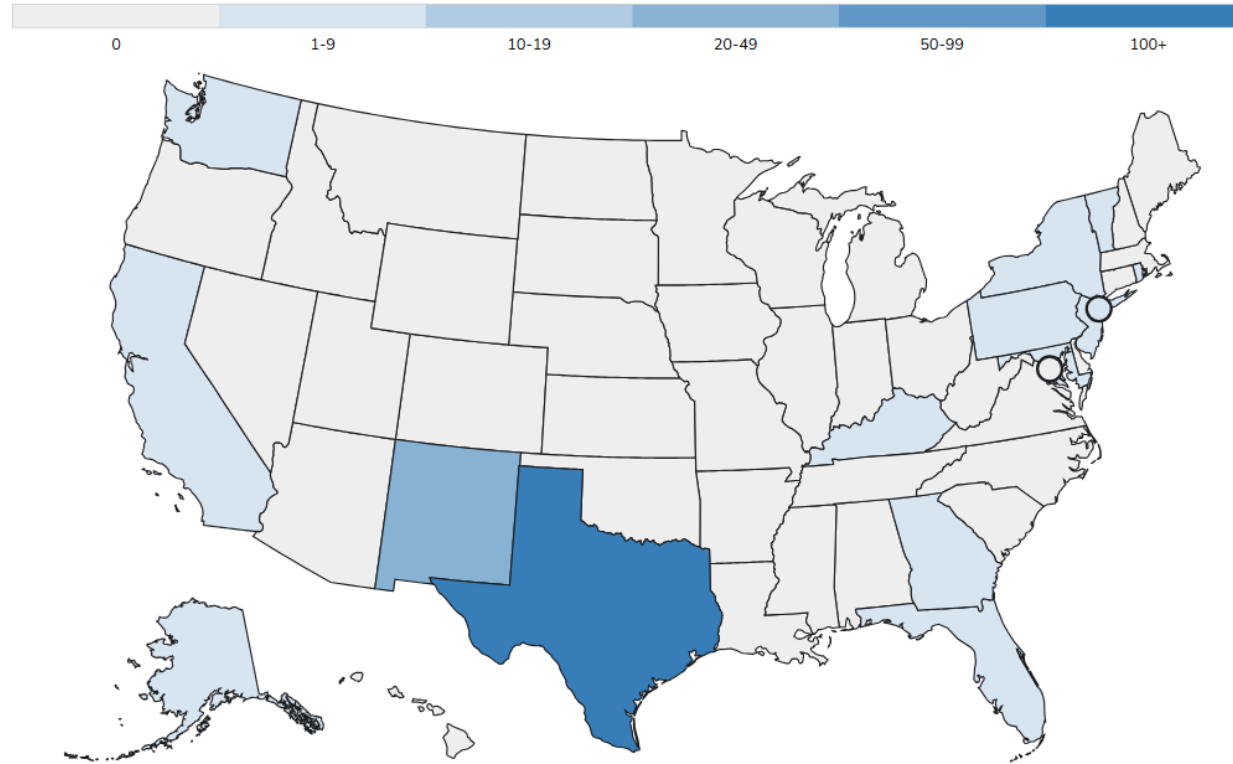
- As of 3/13/25, 301 confirmed measles cases have been reported by 15 jurisdictions in 2025 so far.
 - 3 outbreaks (defined as 3 or more related cases)
 - 93% of the total cases (280 out of 301) are outbreak-associated.
 - Age Breakdown:
 - Under 5 years: 103 (34%)
 - 5-19 years: 126 (42%)
 - 20+ years: 63 (21%)
 - Age unknown: 9 (3%)
 - Vaccination Status
 - Unvaccinated or Unknown: 95%
 - One MMR dose: 3%
 - Two MMR doses: 2%
- Hospitalization Status: 17% of cases (50 of 301) were hospitalized
 - Under 5 years: 27% (28 of 103)
 - 5-19 years: 10% (13 of 126)
 - 20+ years: 13% (8 of 63)
 - Age unknown: 11% (1 of 9)
- Deaths
 - 1 confirmed death ([Texas](#))
 - 1 death under investigation ([New Mexico](#))

Measles Map - 2025

Map of measles cases in 2024 & 2025

as of March 13, 2025

2025 2024



Measles Case Data - 2024

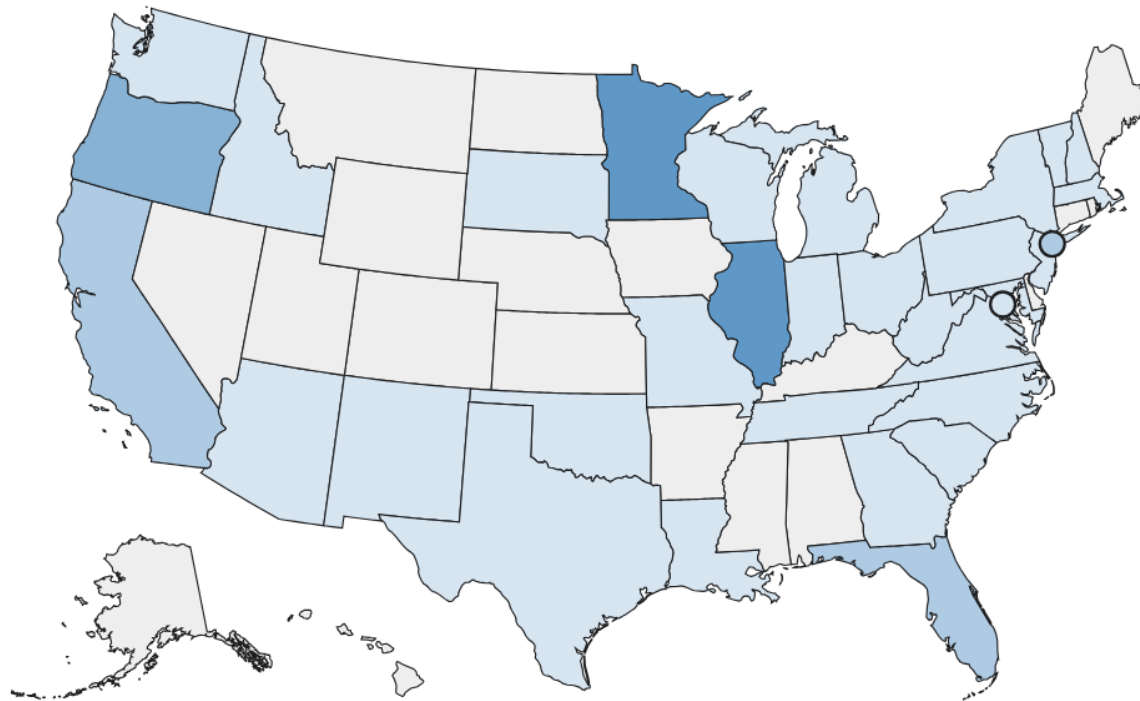
- Total of 285 confirmed measles cases have been reported by 33 jurisdictions in 2024.
 - 16 outbreaks (defined as 3 or more related cases)
 - 69% of the total cases (198 of 285) are outbreak-associated.
 - Age Breakdown:
 - Under 5 years: 120 (42%)
 - 5-19 years: 88 (31%)
 - 20+ years: 77 (27%)
 - Vaccination Status
 - Unvaccinated or Unknown: 89%
 - One MMR dose: 7%
 - Two MMR doses: 4%
 - Hospitalization Status: 40% of cases (114 of 285) were hospitalized
 - Under 5 years: 52% (62 of 120)
 - 5-19 years: 25% (22 of 88)
 - 20+ years: 39% (30 of 77)
 - Deaths
 - 0 reported

Measles Map - 2024

Map of measles cases in 2024 & 2025

as of March 13, 2025

2025 **2024**



Measles Case in MD

- The Maryland HD reported a case of measles to the Newark PHS on 3/8/25. This 10-month-old male had symptom onset on 3/4/25 with fever, diarrhea, and congestion, and on 3/6/25 developed a rash.
- A nasopharyngeal swab collected 3/7/25 was PCR positive for Rubeola. This traveler flew from Abu Dhabi to Washington, DC on 3/5/25 while infectious.

CONTACT MONITORING IN PRINCE GEORGE'S COUNTY

- One individual travelling on the same flight as the index case is a Prince George's County Resident and is currently being monitored by the Health Department for measles, until he is out of the incubation period.

Measles inquiries from the community

- The Health Department is receiving many inquiries from providers and individuals about rash identification and measles protection resources.

RESOURCES

- MDH Clinician letter
- MDH Measles guidelines
- Testing kits available for providers at the Health Department (EH/CVDC)
- Educational resources: CVDC Staff, fact sheets..
- Immunizations
- PCPs