



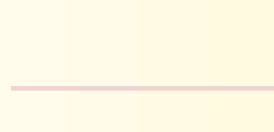
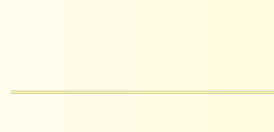
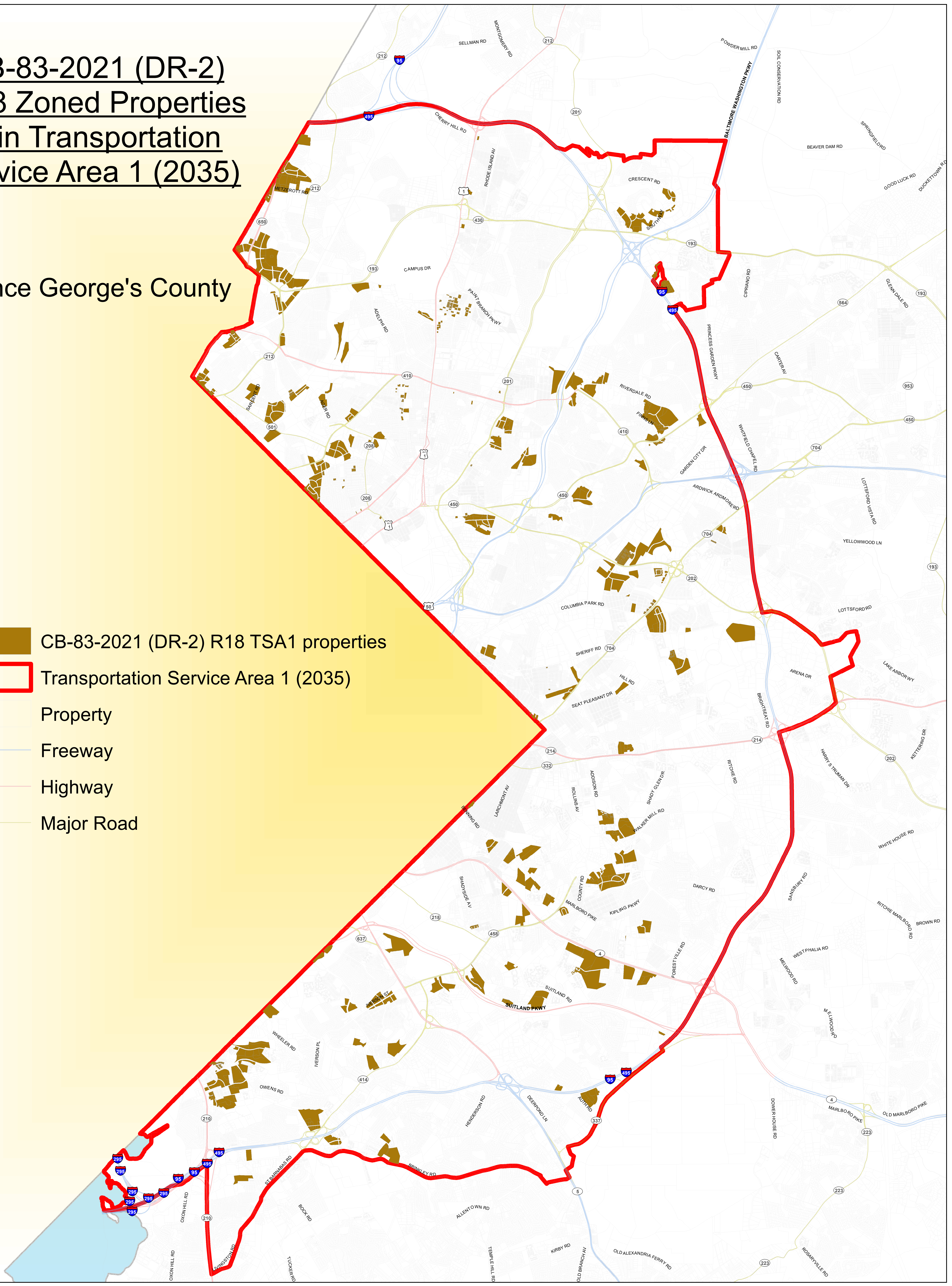


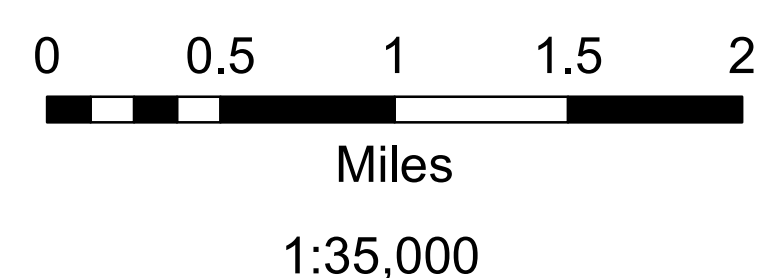
**CB-83-2021 (DR-2)
R-18 Zoned Properties
w/in Transportation
Service Area 1 (2035)**

Prince George's County

-  CB-83-2021 (DR-2) R18 TSA1 properties
-  Transportation Service Area 1 (2035)
-  Property
-  Freeway
-  Highway
-  Major Road



The Maryland - National Capital
Park and Planning Commission
Prince George's County Planning Department
Geographic Information System



Date Created/Delivered: 10/11/21
Author: Keith Wright
GIS Map & Data Request #: 11717
Archive: J:\GIS_Projects\Keith.Wright\Requesticles\11717_*.zip

This map may not be reproduced, stored in a retrieval system, or transmitted by any form, including electronic or by photo reproduction, without the express written permission of The Maryland-National Capital Park and Planning Commission. For more information, contact the Prince George's County Planning Department in Upper Marlboro, Maryland.