



PRINCE GEORGE'S  
COMMUNITY COLLEGE



# Prince George's County Council

## Education and Workforce Development Committee

*Falecia D. Williams, Ed.D.  
President*

*February 24, 2025*



PRINCE GEORGE'S  
COMMUNITY COLLEGE



# Agency Overview



PRINCE GEORGE'S  
COMMUNITY COLLEGE

# Who We Are



## MISSION

To provide high-quality, transformative learning experiences that enrich lives and empower students to earn credentials leading to personal development, professional advancement, and economic prosperity



# Who We Are

## VISION

The region's premier center for dynamic teaching and learning, strategic partnerships, and community engagement that advances knowledge, economic equity, and lifelong personal development





# Success Stories



- **Phillip Barnum**, 38, completed TeamBuilders Academy in December 2023 and was hired as a maintenance technician with a large-scale property management company in the D.C. metropolitan area.
- **Barnum** shared, “I am comfortable presenting my skills and certifications to market myself as a good candidate to stand out from other candidates during the interview process,” Barnum said. “I did this not just to provide for myself and my family, but as something I can leave once my son gets of age. I want him to continue a legacy.”





# Who We Are

## CORE COMMITMENTS

- Students First
- Achievement
- Continuous Improvement
- Empathy
- Equity
- Integrity





PRINCE GEORGE'S  
COMMUNITY COLLEGE

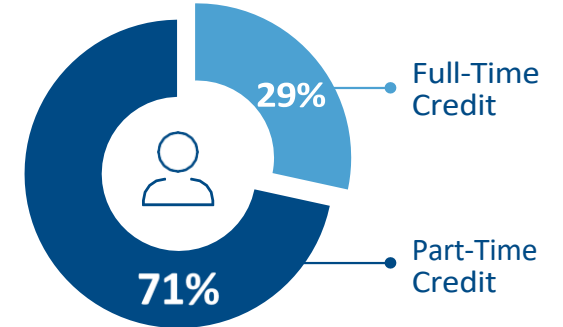
# Total Students



## TOTAL STUDENTS (FY2024)

# 26,939

Credit: 15,636 | Continuing Education: 11,705



## FULL-TIME EQUIVALENT (FTE)

6,673 CREDIT

2,994 CE\*

9,667 TOTAL FTE

## GRADUATION RATE

# 25%



# Age Demographics



## AGE DEMOGRAPHICS

**34**

Average Age

**25**

Credit

**45**

CE\*

\* CE: Continuing Education

AGE RANGE	CREDIT	CONTINUING EDUCATION
Under 18	14%	3%
18–24	54%	15%
25–34	16%	21%
35–49	11%	22%
50–59	3%	9%
60+	2%	29%





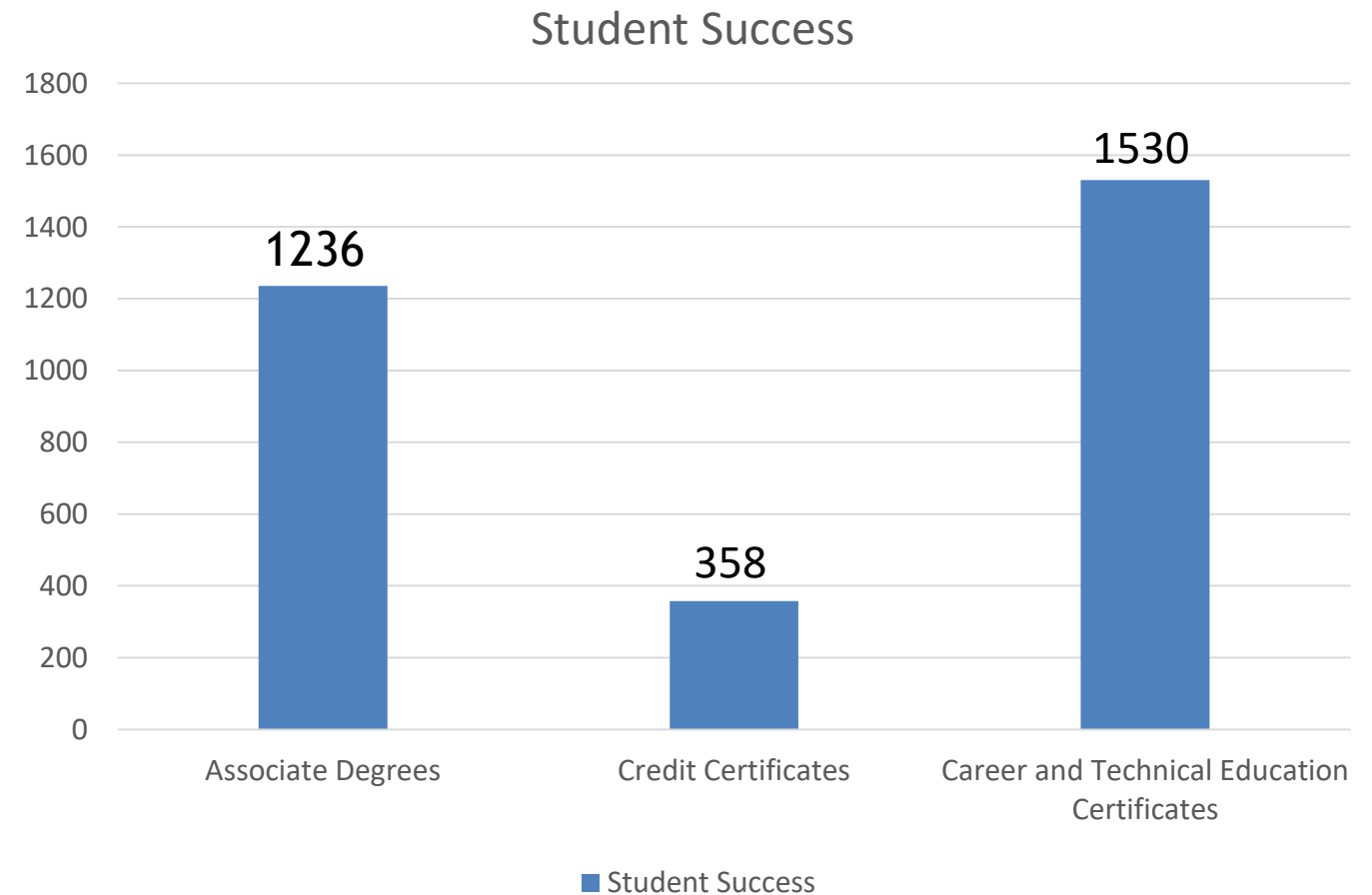
# Race and Ethnicity



Race or Ethnicity	Credit	Continuing Education
Asian	3%	3%
Black or African American	61%	40%
Hispanic or Latino	18%	14%
White	4%	9%
Two or more races	4%	1%
Unknown or Unreported	7%	32%



# Completion Statistics





# Economic Factors



- **43%** Credit students receiving any form of financial aid
- **37%** Credit students receiving Pell Grants
- **41%** Credit students working 20 hours or more per week



PRINCE GEORGE'S  
COMMUNITY COLLEGE



# Agency Achievements





# Student Success Metrics



- First-time/Full-time graduation rate improved from 17.2% to 25%.
- The retention rate for college-ready students grew from 44.5% to 65.8%.
- Nearly 1600 students earned an associate degree or credit certificate.
- Student participation in apprenticeships, internships, and experiential learning grew from 400 to 519.



## First-rate Education:

**Preparing Maryland's future nurses**



- PGCC's Nursing Program received a #1 ranking among 2-year and 4-year institutions from the National Council of States Board of Nursing (NCSBN) in its 23-24 NCLEX Report. The program achieved a 100% National Council Licensure Examination (NCLEX) pass rate.





# Economic Impact



- **Maryland's Community Colleges Annual Impact:**
  - \$11.0 billion (Added Income) or 127,701 (Jobs Supported)
- **1 out of every 31** jobs in Maryland is supported by the activities of Maryland's community colleges and its students.
- The average associate degree graduate from Maryland's community colleges will see an increase in earnings of **\$9,600** each year compared to someone with only a high school diploma working in Maryland.



- Prince George's Community College gained National Junior College Athletic League (NJCAA) approval to move our athletic teams from Division III to Division II in 2024-25, which enables scholarships for student-athletes pursuing college degrees.







# Organizational Culture

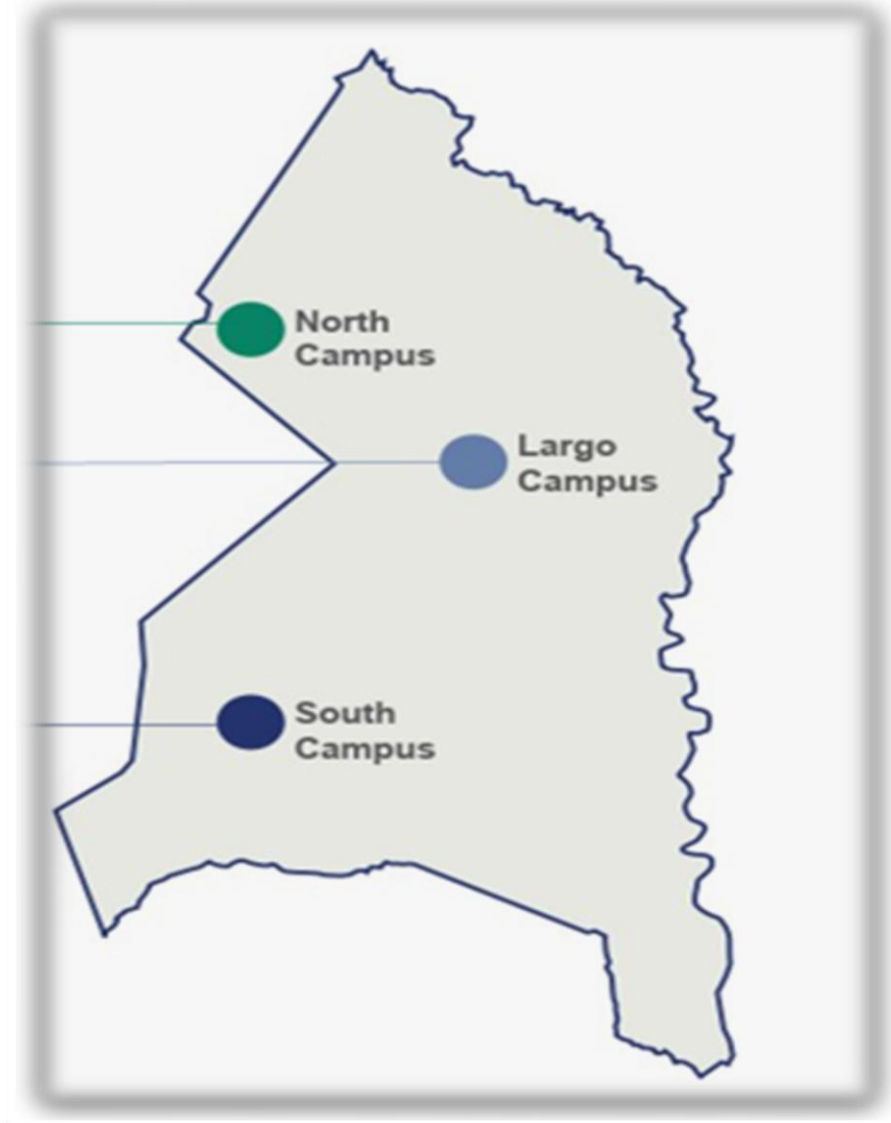


- In June 2024, Prince George's Community College was recognized by the National Institute for Staff and Organization Development (NISOD) and Diverse: Issues in Higher Education (Diverse) as one of the 2024 Most Promising Places to Work in Community Colleges.



PRINCE GEORGE'S  
COMMUNITY COLLEGE

# Three Campus Model





PRINCE GEORGE'S  
COMMUNITY COLLEGE



# Agency Adjustments and Initiatives for 2025





PRINCE GEORGE'S  
COMMUNITY COLLEGE

# Capital Budget Projects



**Marlboro Hall**

- Estimated Budget:  
\$164.4M
- Funding Source:  

Requested FY 18 - FY 25	
County	\$64.4M
State	\$100.0M
- **Size:** 214,500 GSF
- **Estimated Start Date for Design:**  
Design completed
- **Estimated Start Date for Construction:**  
Under construction
- **Final Completion:** July 2025





PRINCE GEORGE'S  
COMMUNITY COLLEGE

# Capital Budget Projects



**Charlene M. Dukes Student Center**

- Estimated Budget:

\$77.4M

- Funding Source:

Requested FY 20 - FY 27

County     \$28.7M

State       \$48.7M

- **Size:** 102,560 GSF
- **Estimated Start Date for Design:**  
In Design
- **Estimated Start Date for Construction:** Spring 2026



# Track Refinish & Outdoor Fitness Project



- There is an opportunity to bring The Fitness Court<sup>®</sup>, The World's Best Outdoor Gym, to PGCC.
- The Fitness Court<sup>®</sup> is designed to provide a full body workout in only seven minutes, all for free in the great outdoors.



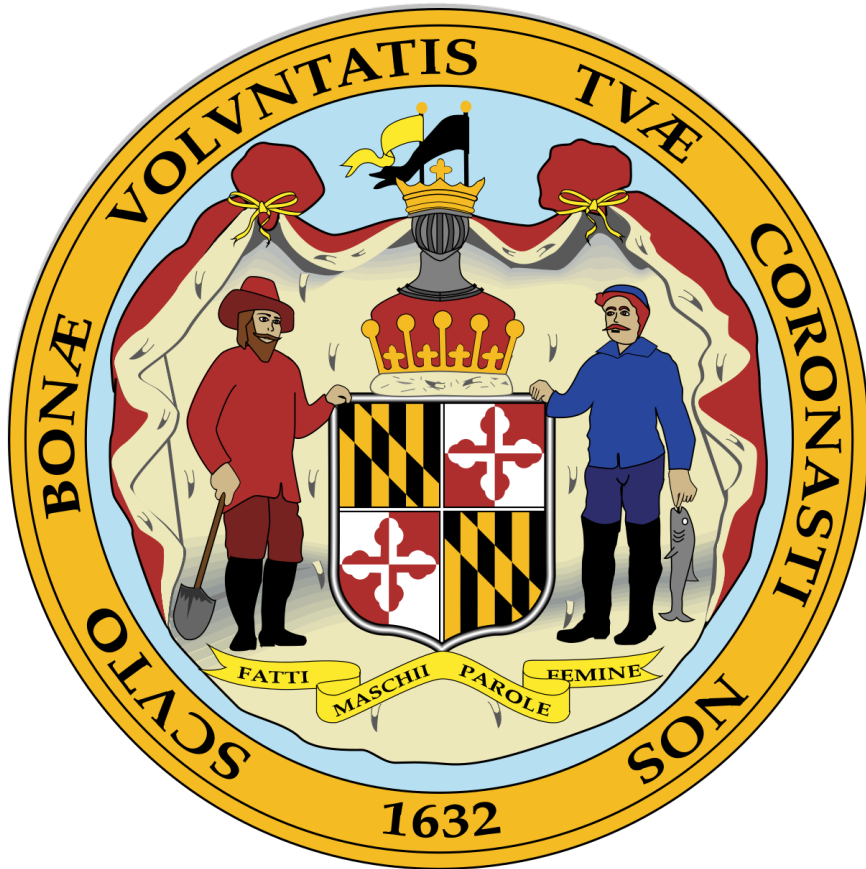
PRINCE GEORGE'S  
COMMUNITY COLLEGE



# Agency Initiatives Beyond 2025



# 2025 State Legislative Priorities



- Support for full funding of the Senator John A. Cade Funding Formula
- Support for reinstating the hold harmless provision in the Senator John A. Cade Funding Formula
- Support for the capital funding outlined in the MACC Capital Prioritization List, funding 14 projects across 10 colleges, such as the Dr. Charlene Mickens Dukes Student Center, Bladen Hall, and Marlboro Hall at Prince George's Community College
- Support to expand new cybersecurity workforce training programs that can train a diverse workforce to fill well-paying positions





# Accelerated Study in Associate Programs (ASAP)



- ASAP is a comprehensive community college program that provides academic, personal, and financial supports to low-income students, while requiring their full-time enrollment.
- Maryland community colleges are eligible for up to \$10 million in matching funds under the Maryland Partnership for Proven Programs.
- These funds are available to community colleges that adopt and implement ASAP.



# Education Enrichment Program

## Adults With Developmental Disabilities



- The Challenge Program includes open enrollment courses for adults with developmental disabilities, which are designed to help students function more independently in their homes, at work, and in the community.
- The Graduate Transition Program offers students with developmental disabilities a unique post-secondary opportunity to further their formal education.



PRINCE GEORGE'S  
COMMUNITY COLLEGE

# Capital Budget Projects



**Bladen Hall**

- Estimated Budget:  

\$67.1M
- Funding Source:  

Requested FY 26 - FY 29	
County	\$27.3M
State	\$39.8M
- **Size:** 95,590 GSF
- **Estimated Start Date for Design:** Fall 2026
- **Estimated Start Date for Construction:** Fall 2028





PRINCE GEORGE'S  
COMMUNITY COLLEGE

# Capital Budget Projects



**WDITC Phase 1 – Annex A**

- Estimated Budget:  
\$1.7M
- Funding Source:  
College Supported
- **Size:** 12,600 GSF
- **Estimated Start Date for Design:**  
Phase I in design
- **Estimated Start Date for Construction:** Anticipated completion March 2025



PRINCE GEORGE'S  
COMMUNITY COLLEGE

# Capital Budget Projects



**Accokeek Hall Learning Commons**

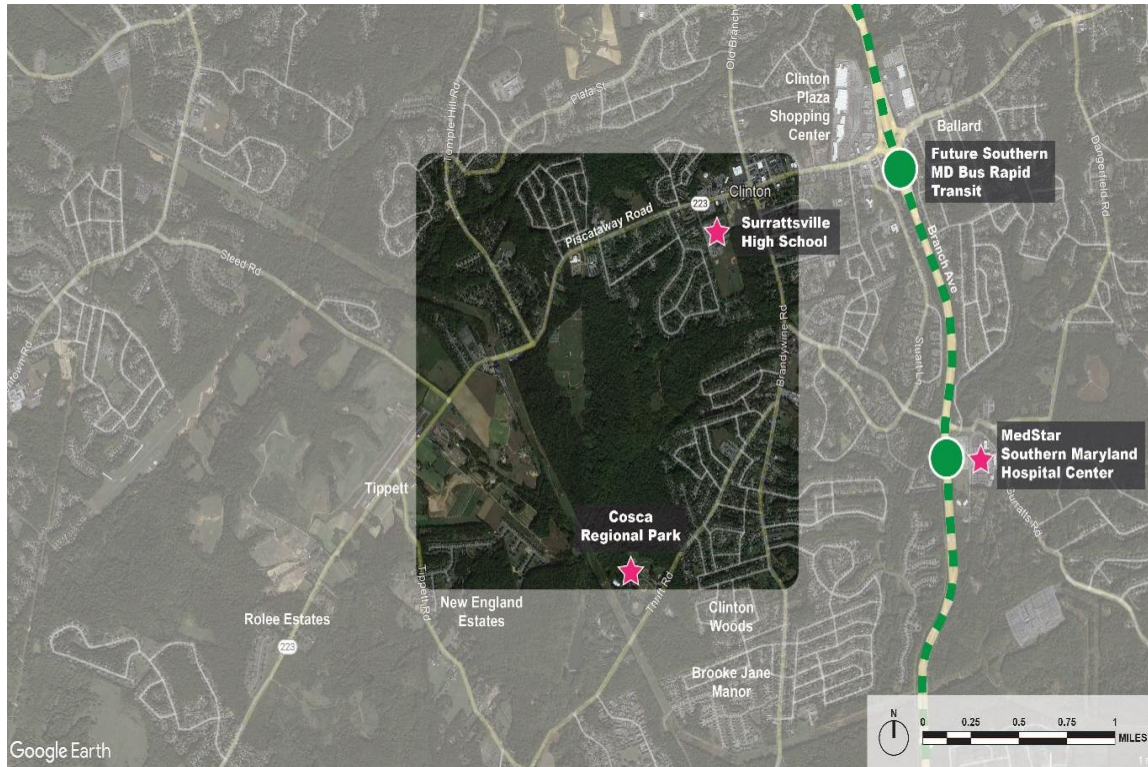
- Estimated Budget: \$1.2M
- Funding Source: College Supported
- **Size:** 9,5000 GSF
- **Estimated Start Date for Design:** Fall 2025
- **Estimated Start Date for Construction:** Fall 2026





PRINCE GEORGE'S  
COMMUNITY COLLEGE

# Capital Budget Projects



**Southern Campus, Clinton, MD**

- Estimated Budget:  
\$200M - \$350M
- Funding Source:  
To Be Determined
- **Size:** 150-250 Acres
- **Estimated Start Date for Design:**  
Summer 2026 (Campus Site Concepts)
- **Estimated Start Date for Construction:** Summer 2028





PRINCE GEORGE'S  
COMMUNITY COLLEGE

# Capital Budget Projects



**WDITC Phase II**

- Estimated Budget: \$58.6M
- Funding Source: To Be Determined
- **Size:** 53,000 GSF
- **Estimated Start Date for Design:** Spring/Summer 2025
- **Estimated Start Date for Construction:** Spring 2027



PRINCE GEORGE'S  
COMMUNITY COLLEGE

# Capital Budget Projects



**Chesapeake Hall**

- Estimated Budget:

\$74.8M

- Funding Source:

Requested FY 27 - FY 29

County     \$30.4M

State       \$44.4M

- **Size:** 90,300 GSF
- **Estimated Start Date for Design:**  
Summer 2028
- **Estimated Start Date for Construction:** Fall 2030





# Success Stories



- **Kevin Holland**, 31, a father of four from Fort Washington, Maryland, joined TeamBuilders Academy (TBA) following the advice of a friend who recommended the program. He shared that the TBA instructors made it a worthwhile learning experience.
- **Holland** received four job offers even before the end of the TBA program. Upon graduation, he chose the most competitive offer with Washington Gas Company as a sales assistant. Today, he enjoys a fulfilling career outlook and a friendly work environment.





PRINCE GEORGE'S  
COMMUNITY COLLEGE

# Questions?



## Thank you for your time!

### Please Stay Connected



**@pgccnews**