

UNIVERSITY PLACE SHOPPING CENTER

Departure from Design Standards

Companion Case : DPLS-22007

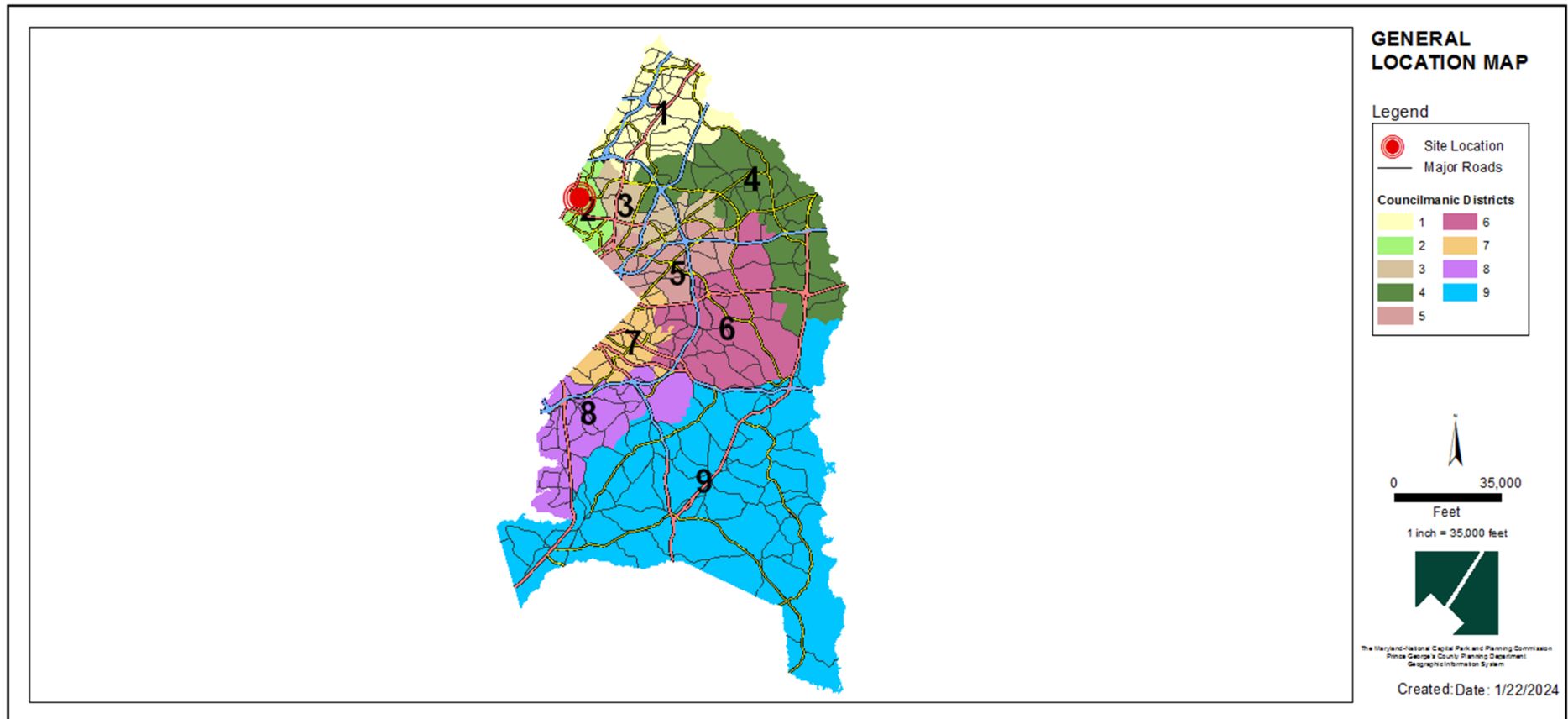
Staff Recommendation: APPROVAL with conditions



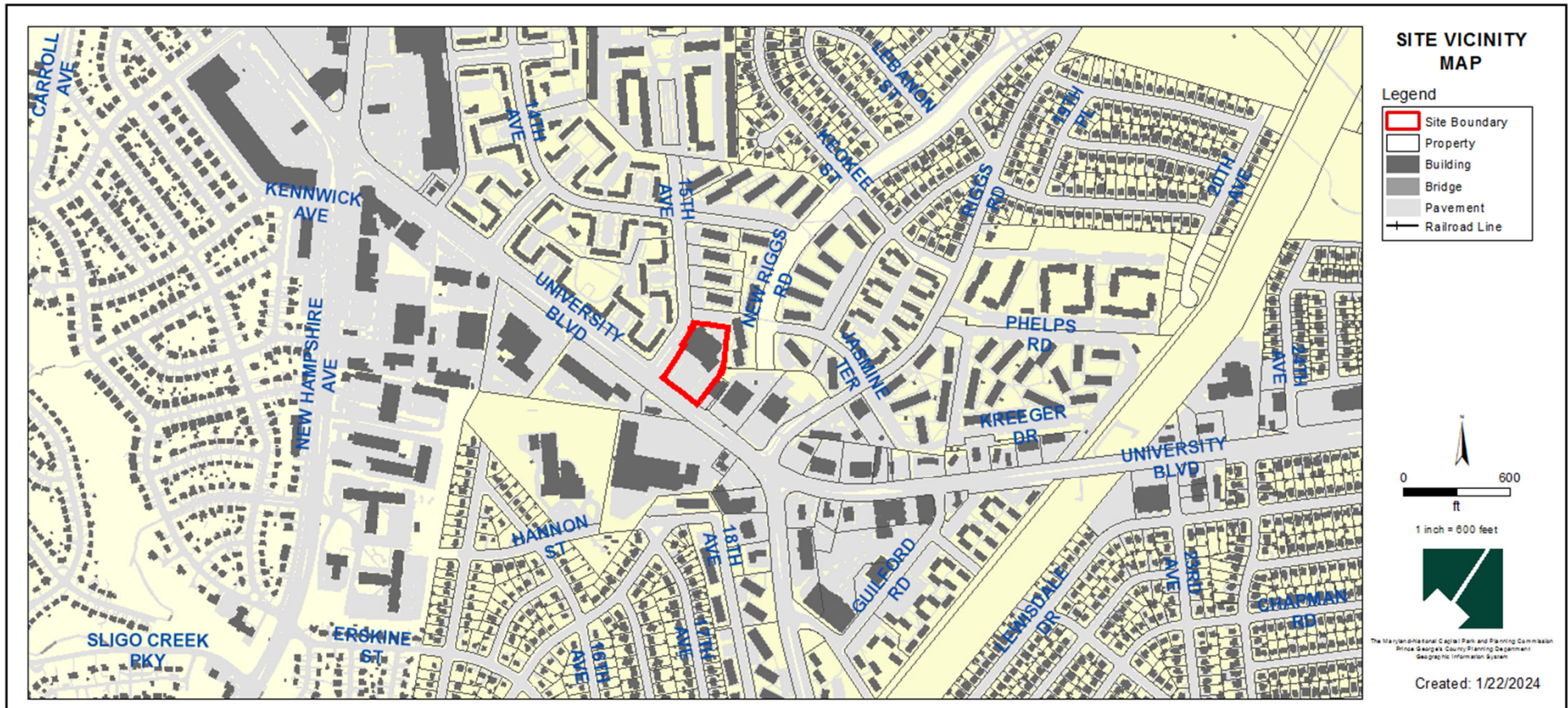
GENERAL LOCATION MAP

Council District: 02

Planning Area: 065



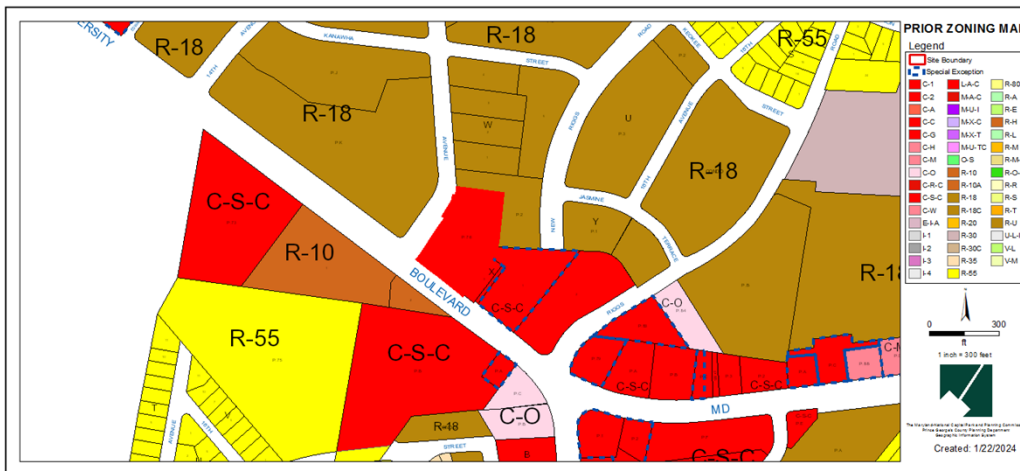
SITE VICINITY MAP



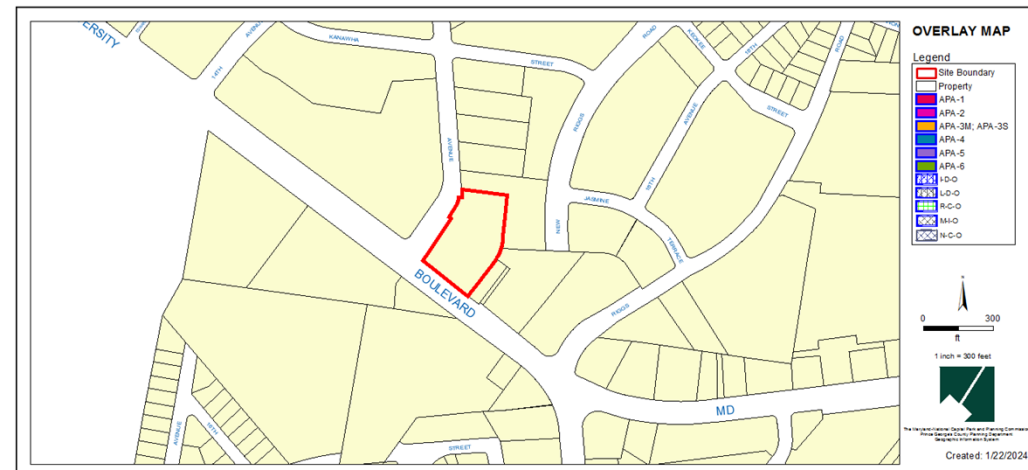
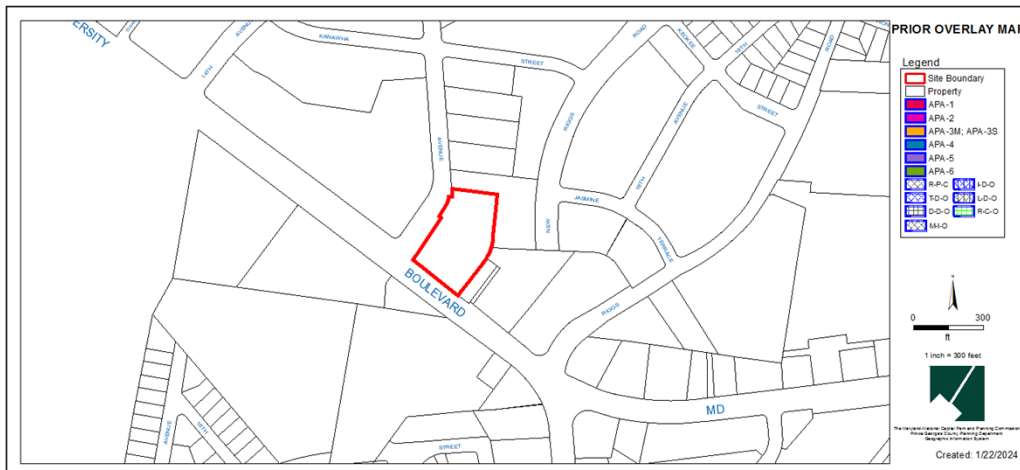
ZONING MAP (PRIOR AND CURRENT)

Prior Property Zone: C-S-C

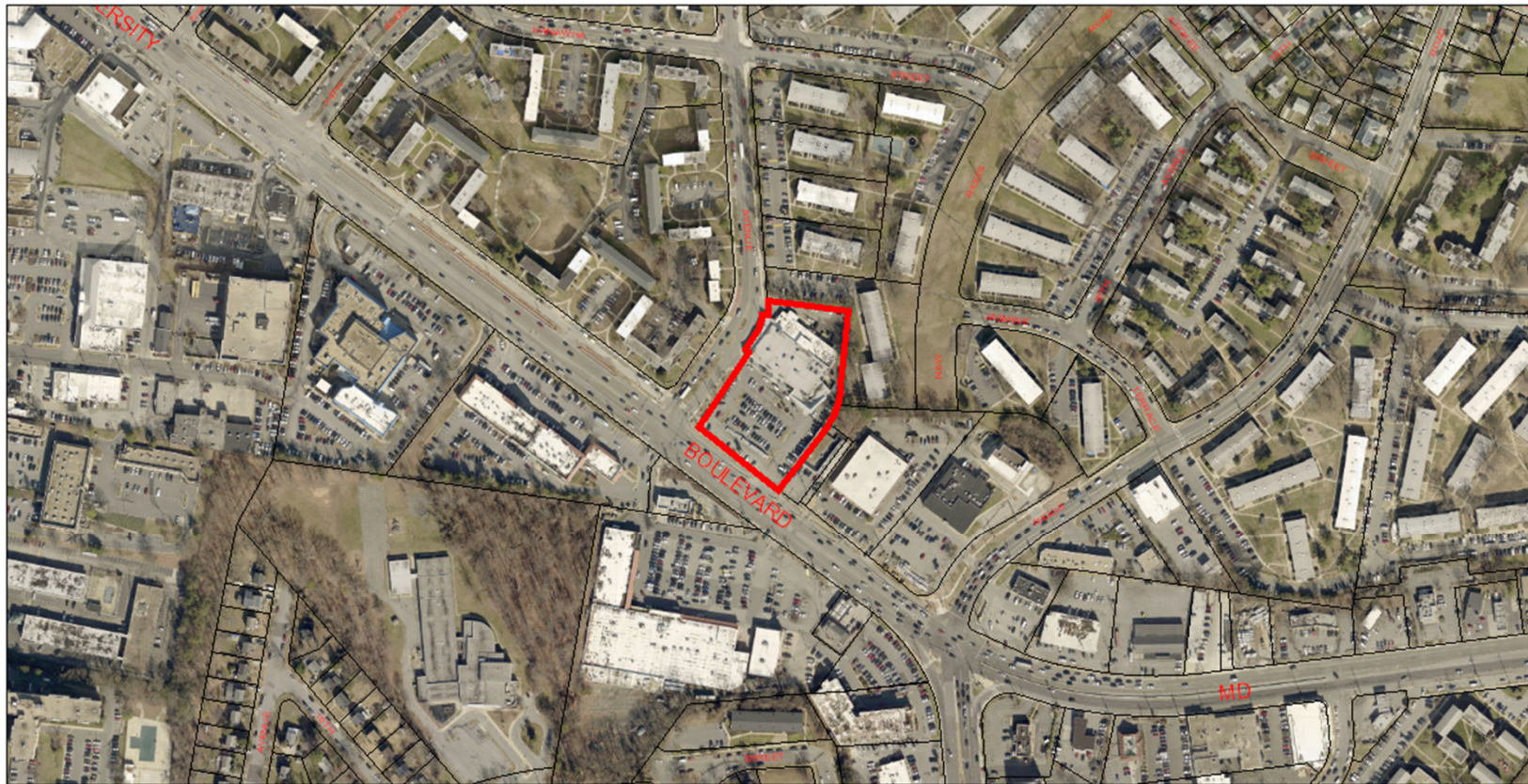
Current Property Zone: LTO-C



OVERLAY MAP (PRIOR AND CURRENT)




AERIAL MAP



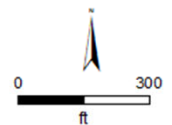
AERIAL MAP

Legend

 Site Boundary

 Property

IMAGERY FROM
May 2023



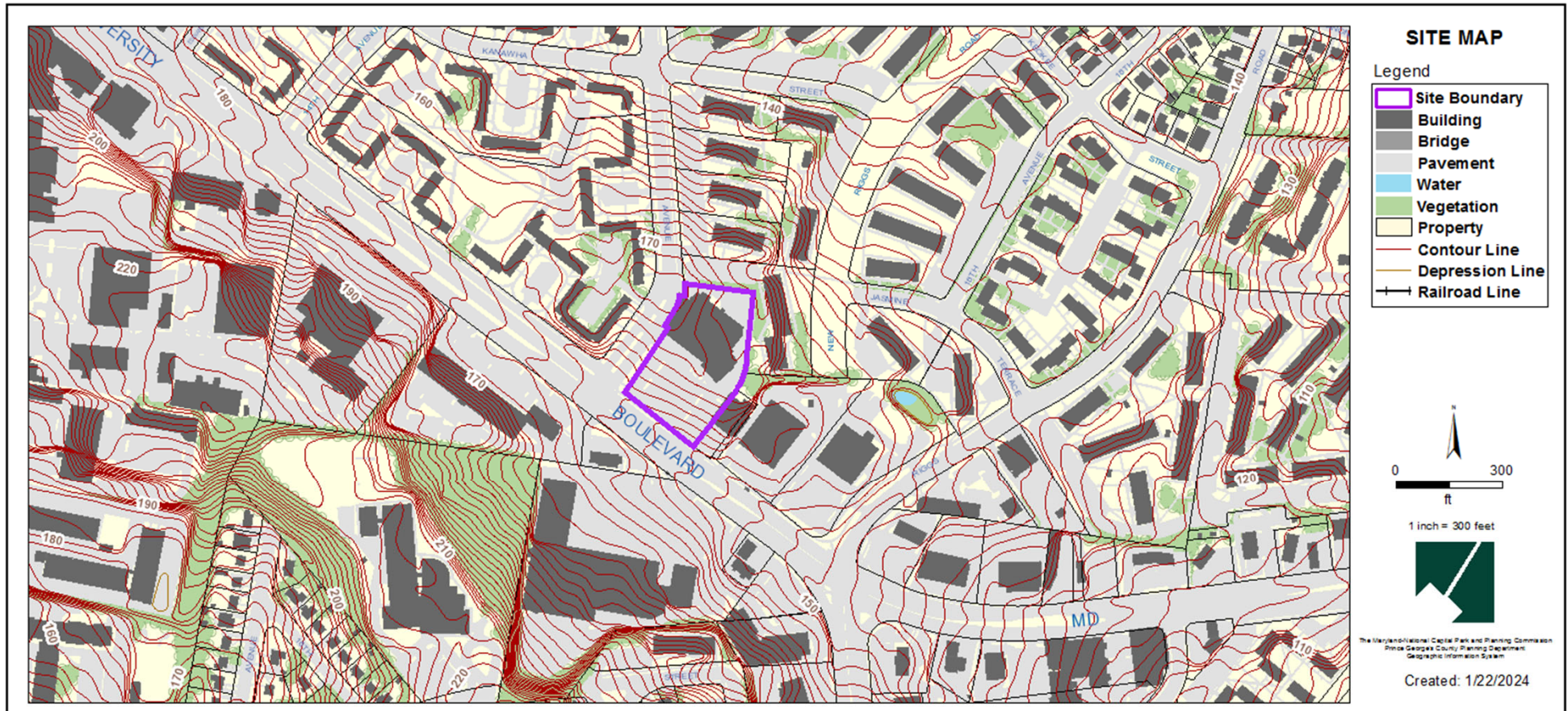
1 inch = 300 feet



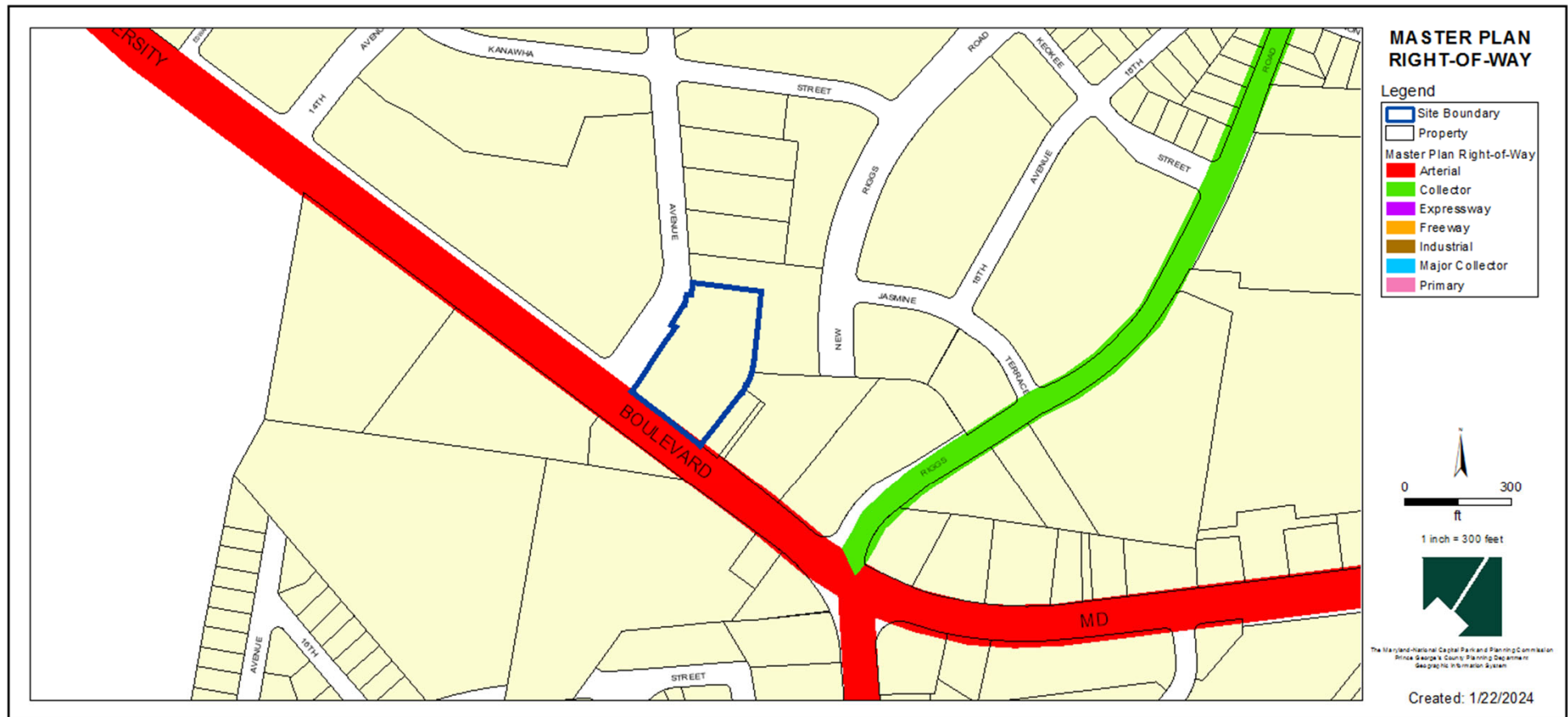
The Maryland-National Capital Park and Planning Commission
Prince George's County Planning Department
Geographic Information System

Created: 1/22/2024

SITE MAP



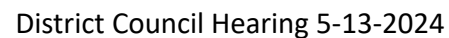
MASTER PLAN RIGHT-OF-WAY MAP



BIRD'S-EYE VIEW WITH APPROXIMATE SITE BOUNDARY OUTLINED



SITE AND LANDSCAPE PLAN



STAFF RECOMMENDATION

Departure from Design Standards DDS-22005

Departure from Parking and Loading Spaces DPLS-22007

- **APPROVAL** with conditions

Major Issues:

- None

Applicant Required Mailings:

- Informational Mailing 7/7/2023
- Acceptance Mailing 11/28/2023