



PRINCE GEORGE'S COUNTY

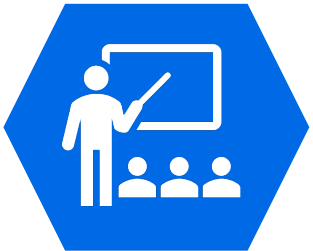
HEALTHCARE ACTION COALITION

Health Equity Workgroup

Your Role In Health In All Policies

Healthcare action coalition

PRESENTATION AGENDA



1. *Introduction to PGHAC (the Coalition)*

Dr. Stacey Little, Community Co-chair, PGHAC
Vice President, Women's and Infants' Services and
Community and Population Health
University of Maryland Medical Systems/UM Capital
Region Health
Prince George's County Resident

2. *Overview of Priorities from the Health Equity Workgroup*

Shari Curtis, Co-chair, Health Equity Workgroup
Program Manager, Prince George's County Health
Connect, Department of Social Services



we are the PRINCE GEORGE'S

HEALTHCARE ACTION COALITION (PGHAC)



Health is a shared responsibility

No one agency or
organization can fully
address health



The Vision

A county that
elevates the health
and well-being of our
residents, visitors
and communities



Co-Chair, Health Officer

ERNEST CARTER

MD, PhD





Co-Chair, Community Partner

STACEY LITTLE

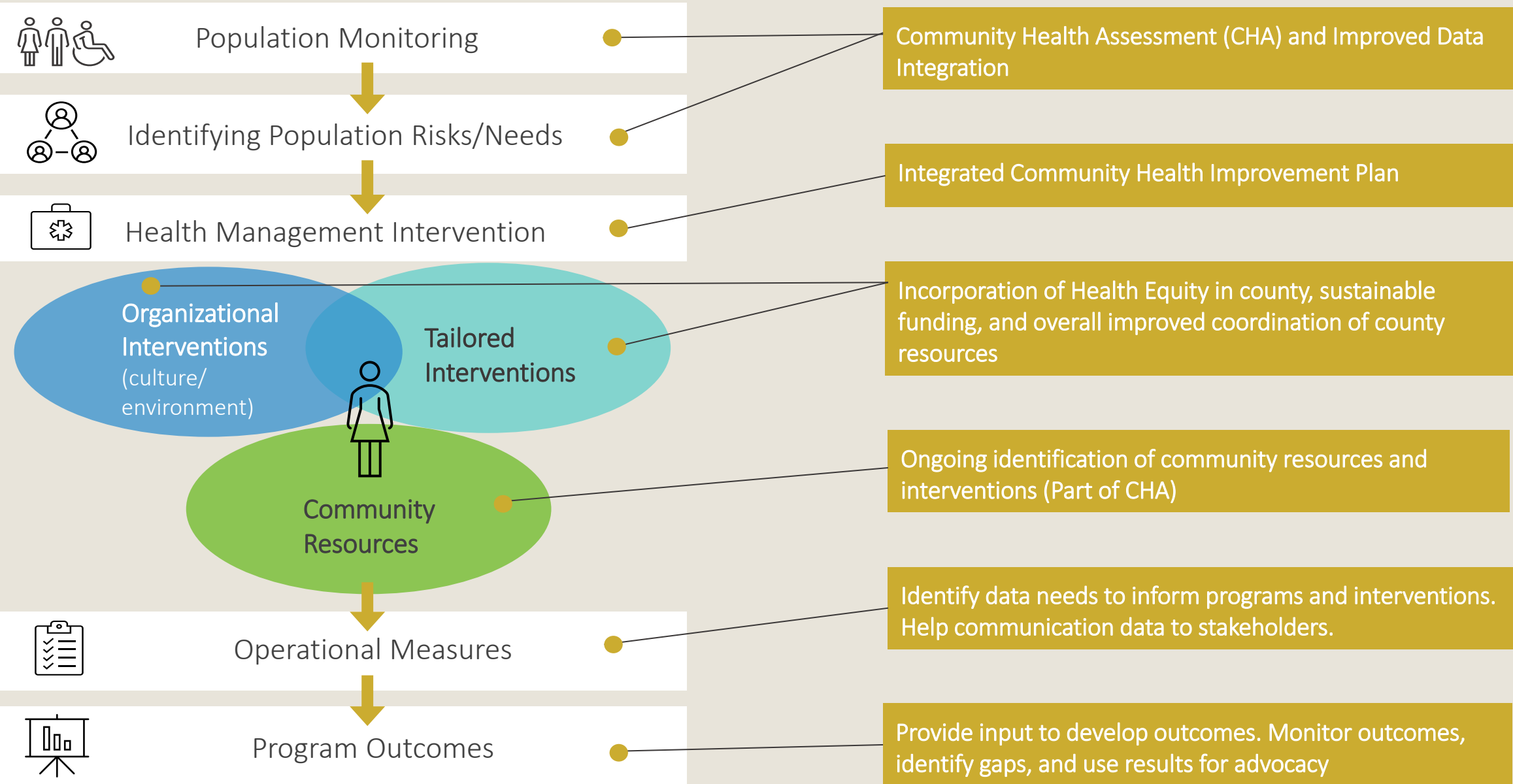
PhD, MPH, MSW





POPULATION HEALTH MANAGEMENT

PGHAC ROLE





health equity

HEALTH EQUITY WORKGROUP



The Vision

Co-Chairs: Shari Curtis, Phyllis Slade Martin

Contact: PGHAC@co.pg.md.us

Meeting: 3rd Thursday, 3:30pm – 5:00pm

Prince George's County is a place where everyone has equitable access to achieve their full health and wellness potential, regardless of race, color, religion, country of origin, immigration status, class, age, disability, sexual orientation, gender, gender identity, or health literacy skills



"Health equity" or "equity in health" implies that all persons should have a fair opportunity to attain their full health potential and that no one should be disadvantaged from achieving this potential.



World Health Organization



"Health inequities are differences in health that are a result of systemic, avoidable and unjust social and economic policies and practices that create barriers to opportunity."



American Public Health Association



The Health Equity Workgroup

Established in 2016

- The Work Group Subcommittees are tasked with making recommendations to address equity. Recent activity includes, but is not limited to:
 - 2018 Health Equity Forum Report
 - Case Studies
 - Issue Briefs
 - Factsheets





What is Health in All Policies?

The World Health Organization (WHO) defines Health in All Policies as an “approach to policies across sectors that systematically takes into account the health implications of decisions, seeks synergies, and avoids harmful health impacts to improve population health and health equity.”

WHO HiAP Framework for Country Action, January 2014



Moving Forward

Collaboration with the Health Equity Work Group



- Recommendations for Implementation of CR-127-2020
- Training for Board of Health Members on implementing Health in All Policies through an equity lens.
- Plans for the Health Equity Champions Initiative (community – based education)
- How data can inform policy



Priority Areas for CR-127-2020



- Obtain health equity education for Board of Health members
- Implement **sustainable, long-term** investments in Health and Human Services Sectors



Priority Areas for CR-127-2020



- Accountability and transparency for implementation of CR-127-20
- ([Rand 2021 Report](#))

• Re-design crisis response in the County



Priority Areas for CR-127-2020



- Implement county-wide equity impact assessments

- Elevate Board of Health engagement



Board of Health Education

- Provide training and education on Health in All Policies
- Implementation using a Equity Lens

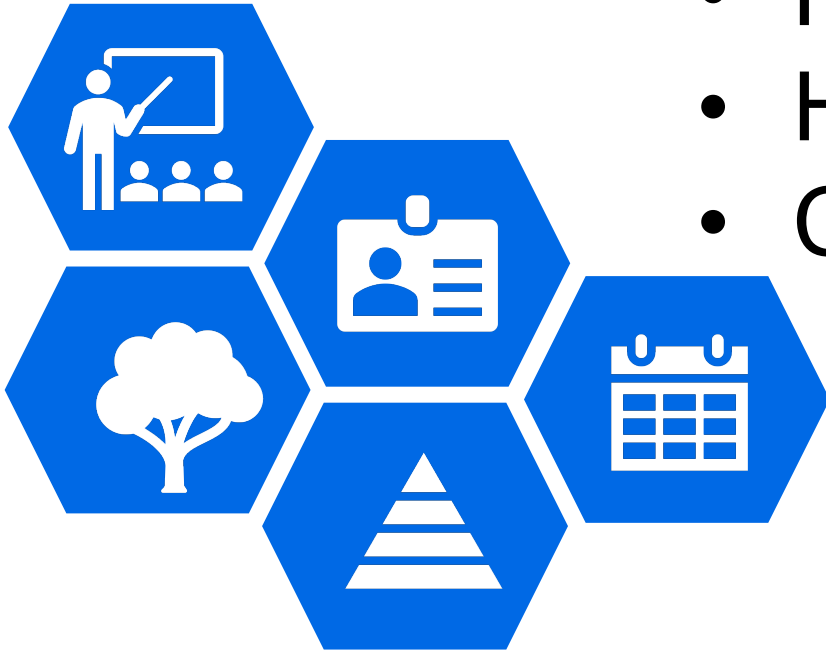




Health Equity Champions Initiative

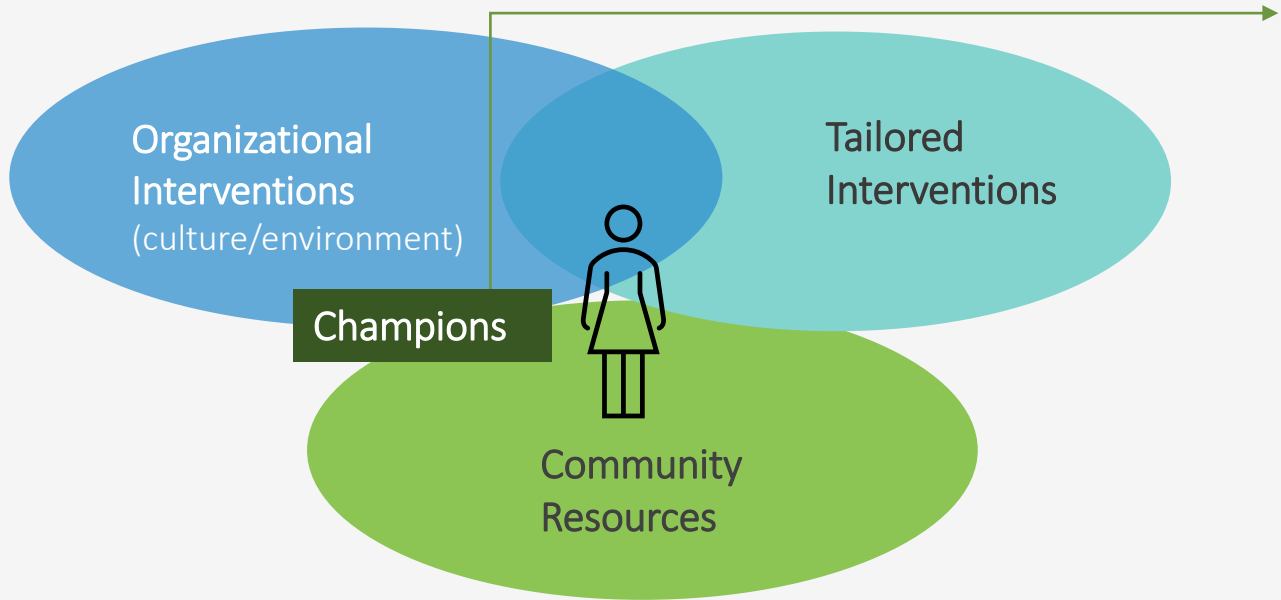
Community – Based Education

- Health Equity
- Health Literacy
- Health in All Policies
- Community Engagement





HEALTH EQUITY CHAMPIONS PROGRAM (CP)



PROJECT **GOAL:**

To engage and train community members to advocate for health in all policies to address inequities and improve well-being and quality of life for all Prince George's county residents



PGHAC

HEALTH EQUITY

HEALTH EQUITY CHAMPIONS PROGRAM (CP)

INPUTS

What we invest

- HIAP, DA, HL subcommittees
- Graduate students/workgroup volunteers
- Prince George's community residents and organizations
- HEAL and BHAG members

OUTPUTS

Activities

- Health Equity curriculum
- Connect with community organizations
- Engage community organizations
- Improve stakeholder engagement

OUTCOMES

Alignment with Population Health Goals

- Accountability
- Improve overall health of residents through policy
- Increase public health investments
- Elevate the Community Voices



Data and Policy

- Evidence of the depth and breadth of the issue
- Specific population issues
- Framing data through a health equity lens





P G H A C

Next Steps

- Support and strengthen policies and resources using a health equity lens
- Attend the September 13th PGHAC quarterly meeting featuring our hospital partners' community health implementation plans
- Become a health equity champion