

Plan Prince George's 2035 Five Year Review Status Update

**PHED Committee Meeting
March 5, 2020**



Agenda



Heat Maps



Regional Indicators



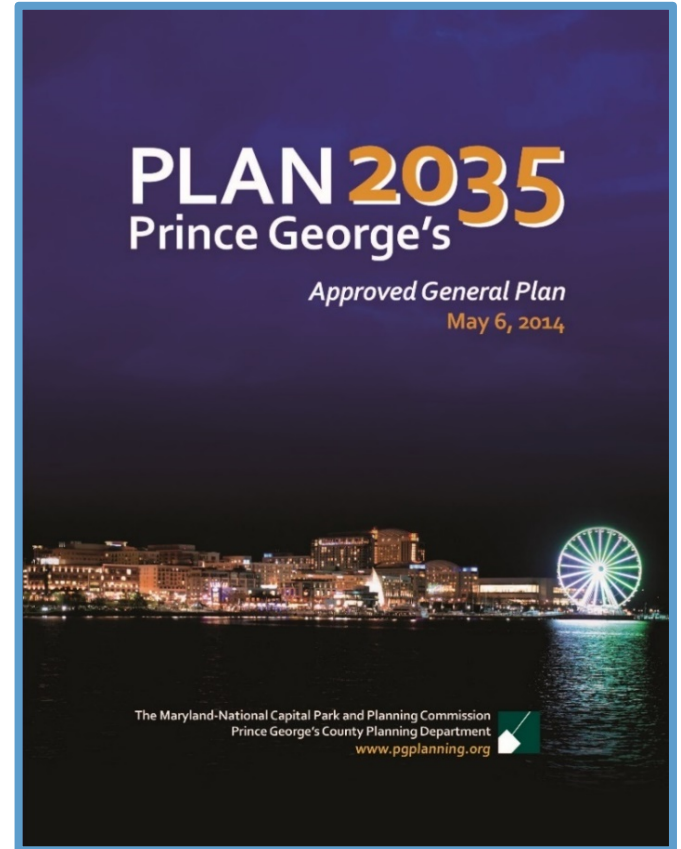
Proxy Indicators



Data Sources Discussion



Next Steps



Growth Policy Map



Employment Areas



Established Communities



Rural and Agricultural Areas



Metrorail



Future Water and Sewer Service Area



Growth Boundary



Proposed Purple Line Light Rail

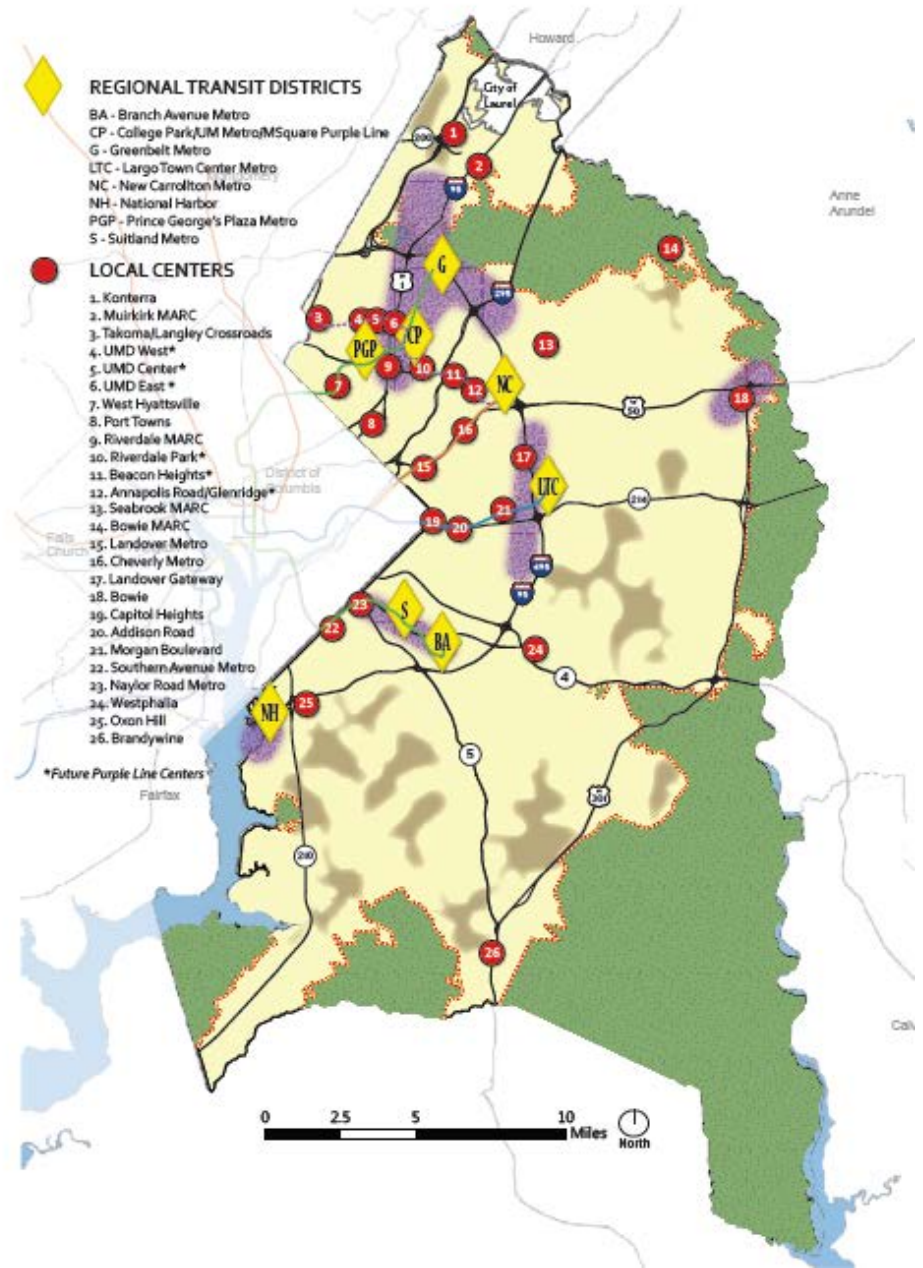


Table 17: Growth Management Goals

Table 17. Growth Management Goals

Growth Policy Map Areas	Percentage of New Dwelling Units	Projected Dwelling Units	Percentage of New Jobs	Projected New Jobs
Regional Transit Districts	50%	31,500	50%	57,000
Local Centers	25%	15,750	20%	22,800
<ul style="list-style-type: none"> Local Transit, Neighborhood, and Campus Centers 	15%	9,450	15%	17,100
<ul style="list-style-type: none"> Town Centers 	10%	6,300	5%	5,700
Employment Areas	4%	2,520	20%	22,800
Established Communities	20%	12,600	9%	10,260
Future Water and Sewer Service Areas	0%	0	0%	0
Rural and Agricultural Areas	1%	630	1%	1,140
Total County Projected Growth	100%	63,000	100%	114,000

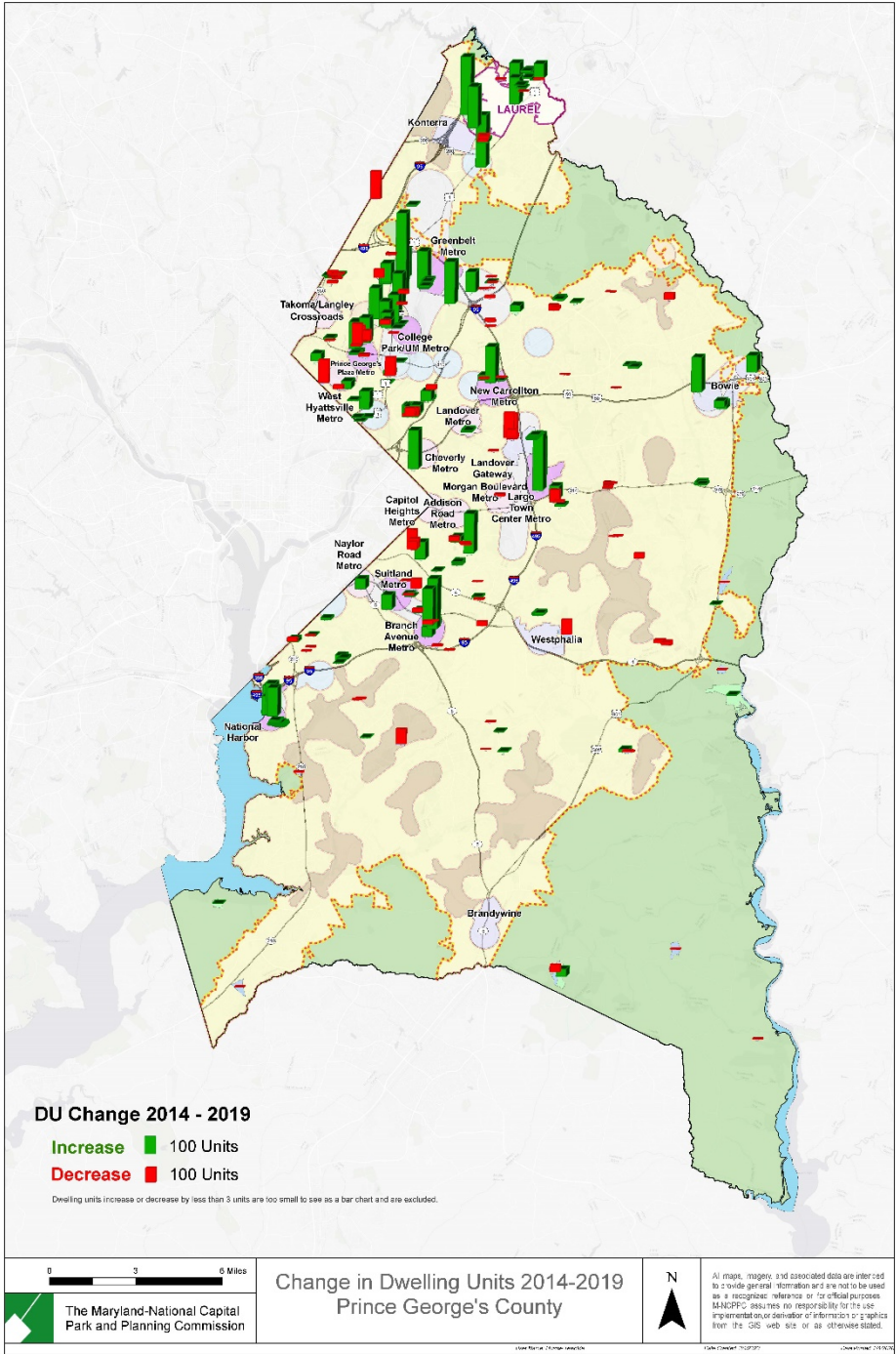
**The goals identified in Table 16 are 25-year goals that provide guidance on the success of the Growth Policy Map and Plan 2035. These goals are not designed to be applied to, and shall not be tested against, individual development projects.*

Source: MWCOG 8.1 Projections, 2012

Dwelling Unit Change: 2014 - 2019

GROWTH AREA TYPES	EXISTING UNITS, 2014		PLAN 2035 GROWTH MANAGEMENT GOALS			OBSERVED GROWTH, 2014-2019	
	EXISTING UNITS	EXISTING UNITS DISTRIBUTION	NEW UNITS GOAL (2035)	NEW UNITS GOAL (2019, interpolated)	NEW UNITS DISTRIBUTION GOAL	NEW UNITS	NEW UNITS DISTRIBUTION
REGIONAL TRANSIT DISTRICTS	15,065	4%	31,500	7,875	50%	4,035	25%
LOCAL CENTERS	33,315	10%	15,750	3,938	25%	3,401	21%
EMPLOYMENT AREAS	21,897	6%	2,520	630	4%	1,079	7%
ESTABLISHED COMMUNITIES	256,099	76%	12,600	3,150	20%	7,497	46%
FUTURE WATER AND SEWER SERVICE AREAS	6,218	2%	0	0	0%	304	2%
RURAL AND AGRICULTURAL AREAS	4,785	1%	630	158	1%	129	1%
PRINCE GEORGE'S COUNTY	337,379	100%	63,000	15,750	100%	16,445	100%

Source: MD SDAT Data 2014-18

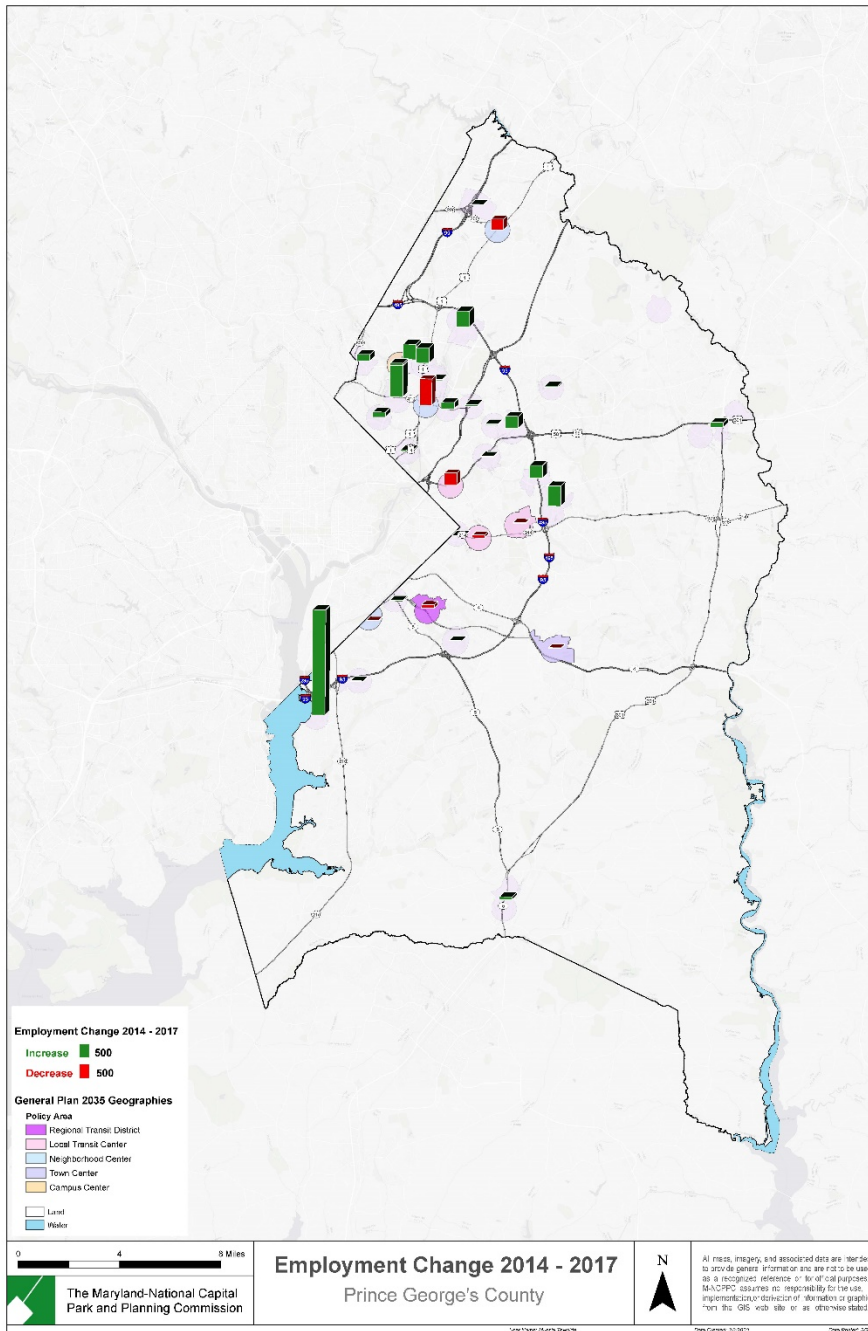


Job Numbers Change

Total Primary Jobs (2014 to 2017)					
Growth Policy Map Areas	Estimated Primary Jobs 2014	Estimated Primary Jobs 2017	Change	Plan 2035 Goal	Percentage Change (2014-2017)
Regional Transit Districts	34,680	41,721	7,041	57,000	20%
Local Centers	45,347	46,159	812	22,800	0%
Local Transit, Neighborhood, and Campus	37,284	37,360	76	17,100	0%
Town Centers	8,063	8,799	736	5,700	9%
Employment Area	32,870	35,069	2,199	22,800	7%
Established Communities	158,558	164,887	6,329	10,260	4%
Future Water and Sewer Service Areas	4,005	3,868	(137)	-	-3%
Rural and Agricultural Areas	3,584	3,403	(181)	1,140	-5%
Total - Countywide¹	279,044	295,107	16,063	114,000	

Sources: U.S. Census Bureau, OnTheMap Application and LEHD Origin-Destination Employment Statistics (Beginning of Quarter Employment, 2nd Quarter of 2002-2017); M-NCPPC; Willdan, 2019





Plan 2035 Indicators

Indicators	Target	Indicators	Target	Indicators	Target
Household net worth or wealth.	▲	Regional share of employment (county employment as a percent of MSA region employment).*	▲	Number of LEED® certified buildings.*	▲
Higher education attainment.*	▲	Commercial versus residential tax base.	▲	Acres of agricultural land preserved.	▲
Percent of restaurants that are fast food.	▼	Commercial vacancy rates.	▼	Acres of forest planted and preserved.	▲
Obesity/overweight rates for adults and youths.	▼	Wage growth.	▲	Acres of impervious surfaces retrofitted.	▲
Percent of housing cost burdened households.	▼	Unemployment rates.	▼	<i>Also see Growth Management Goals (Table 17)</i>	
Housing and transportation affordability.*	▲	Commuting patterns.	▲	*Region Forward indicator	
Crime rates.*	▼	Vehicle miles traveled.	▼		
Mode split—walk, bike, transit, and auto trips.*	▲	Bike and pedestrian facilities constructed.*	▲		
Foreclosure rates.	▼	Recycling rates.	▲		
Occupied housing units.	▲	Waterway health.*	▲		
Poverty rates.	▼	County greenhouse gas emissions.*	▼		



Crime Rates

Table 3 below shows arrests for the Part I/Part A Offenses for each of the COG member jurisdictions, and Table 4 illustrates the arrests for each associate member.

Table 3: Arrests for COG Member Jurisdiction, 2018

COG Police Departments	Reporting Method	Homicide	Rape	Robbery	Agg. Assault	Burglary	Larceny	M/V Theft	Total Arrests
Metropolitan (D.C.)	Other	116	62	746	910	245	2,374	55	4,508
Town of Bladensburg	UCR	0	1	0	11	10	11	7	40
City of Bowie	UCR	2	0	17	9	11	63	2	104
Charles County	UCR	5	7	71	232	49	619	22	1,005
Frederick County	UCR	0	8	18	65	45	340	9	485
City of Frederick	UCR	2	8	42	127	43	224	3	449
City of Gaithersburg	NIBRS	0	16	32	42	33	258	14	395
City of Greenbelt	UCR	2	2	17	20	12	38	8	99
City of Hyattsville	UCR	0	0	10	16	13	175	6	220
City of Laurel	UCR	2	3	5	33	9	127	2	181
Montgomery County	NIBRS	12	142	381	325	431	2,578	210	4,079
Prince George's County	UCR	57	65	302	288	183	803	137	1,835
City of Rockville	NIBRS	1	8	22	14	23	145	20	233
City of Takoma Park	NIBRS	0	2	13	7	11	18	2	53
City of Alexandria	NIBRS	4	25	30	104	52	311	18	544
Arlington County	NIBRS	1	4	19	54	19	265	15	377
City of Fairfax	NIBRS	0	0	9	2	7	64	2	84
Fairfax County	NIBRS	15	289	214	21	236	5,304	185	6,264
City of Falls Church	NIBRS	0	2	4	8	8	24	1	47
Town of Leesburg	NIBRS	0	2	8	28	7	107	6	158
Loudoun County	NIBRS	3	11	34	148	47	617	58	918
City Manassas	NIBRS	10	8	23	80	21	95	0	237
City Manassas Park	NIBRS	0	2	1	7	5	9	4	28
Prince William County	NIBRS	13	22	103	295	81	815	58	1,387
TOTAL		245	689	2,121	2,846	1,601	15,384	844	23,730

Commercial Construction

Commercial Construction by Jurisdiction

The District of Columbia led the region in commercial construction, accounting for 34 percent of new commercial space in 2018. Loudoun County was the jurisdiction with the most commercial construction between 2014 and 2017, with 26 percent of new space during the period. Over the past five years, Loudoun County has consistently outpaced its historical shares of regional construction, while the Maryland counties of Charles, Frederick, Montgomery, and Prince George's have added new commercial space at rates well below prior years. Loudoun added more commercial space in 2018 than the four Maryland counties combined. Bladensburg, Greenbelt, and Takoma Park are the only COG member jurisdictions with no commercial construction in the past five years.

Figure 10: Commercial Construction Totals for each COG Member Jurisdiction

Jurisdiction	Built Prior to 2014			2014-2017 Completions			2018 Completions			Estimated 2018 Year End Vacancy Rate
	Buildings	Square Feet	Regional Share	Buildings	Square Feet	Regional Share	Buildings	Square Feet	Regional Share	
District of Columbia	8,006	250,291,818	23.3%	90	10,148,838	21.2%	20	3,520,211	33.8%	9.2%
Suburban Maryland Jurisdictions										
Charles	1,061	16,746,265	1.6%	13	401,962	0.8%	3	26,888	0.3%	8.2%
Frederick County	2,334	45,064,761	4.2%	45	2,458,878	5.1%	6	155,468	1.5%	7.9%
City of Frederick	1,188	21,643,713	2.0%	12	522,535	1.1%	2	8,130	0.1%	7.8%
Rest of County	1,146	23,421,048	2.2%	33	1,936,343	4.1%	4	147,338	1.4%	7.9%
Montgomery	4,771	155,156,601	14.4%	81	5,024,493	10.5%	13	483,143	4.6%	8.9%
Galthersburg	520	18,727,424	1.7%	15	727,668	1.5%	2	10,335	0.1%	5.0%
Rockville	563	22,952,807	2.1%	16	583,242	1.2%	3	275,588	2.6%	14.3%
Takoma Park	106	1,163,622	0.1%	0	0	0.0%	0	0	0.0%	2.4%
Rest of County	3,582	112,312,748	10.4%	50	3,713,583	7.8%	8	197,220	1.9%	8.5%
Prince George's	5,970	144,433,096	13.4%	96	5,520,715	11.8%	14	705,045	6.8%	7.4%
Bladensburg	99	1,141,160	0.1%	0	0	0.0%	0	0	0.0%	0.6%
Bowie	218	6,705,229	0.6%	10	261,636	0.5%	1	12,871	0.1%	4.7%
College Park	246	4,201,025	0.4%	6	164,250	0.3%	1	141,690	1.4%	5.2%
Greenbelt	89	4,654,234	0.4%	0	0	0.0%	0	0	0.0%	15.2%
Hyattsville	222	5,068,484	0.5%	2	141,588	0.3%	0	0	0.0%	7.8%
Laurel	356	5,908,621	0.5%	16	420,113	0.9%	0	0	0.0%	8.8%
Rest of County	4,740	116,754,343	10.9%	62	4,533,128	9.5%	12	550,484	5.3%	7.4%
Maryland subtotal	14,136	361,400,723	33.6%	235	13,406,048	28.1%	36	1,370,544	13.2%	8.2%
Northern Virginia Jurisdictions										
Alexandria	1,568	42,345,134	3.9%	13	1,143,449	2.4%	2	185,943	1.8%	10.0%
Arlington	1,015	62,827,204	5.8%	10	1,314,411	2.8%	2	304,182	2.9%	15.1%
Fairfax County	4,869	219,889,519	20.5%	65	5,513,409	11.5%	12	2,213,803	21.3%	11.3%
Fairfax City	300	7,435,771	0.7%	2	26,664	0.1%	0	0	0.0%	8.2%
Falls Church	274	3,815,766	0.4%	3	284,000	0.6%	0	0	0.0%	5.6%
Loudoun	1,981	68,644,614	6.4%	148	12,350,720	25.9%	32	2,289,244	22.0%	5.8%
Manassas City	392	7,596,208	0.7%	5	106,670	0.2%	0	0	0.0%	3.4%
Manassas Park	67	1,507,822	0.1%	0	0	0.0%	1	16,000	0.2%	2.1%
Prince William	2,000	49,074,520	4.6%	77	3,470,291	7.3%	9	500,565	4.8%	5.7%
Virginia subtotal	12,466	463,136,558	43.1%	323	24,209,614	50.7%	58	5,509,737	53.0%	9.8%
COG Region Total	34,608	1,074,829,099	100.0%	648	47,764,500	100.0%	114	10,400,492	100.0%	9.1%

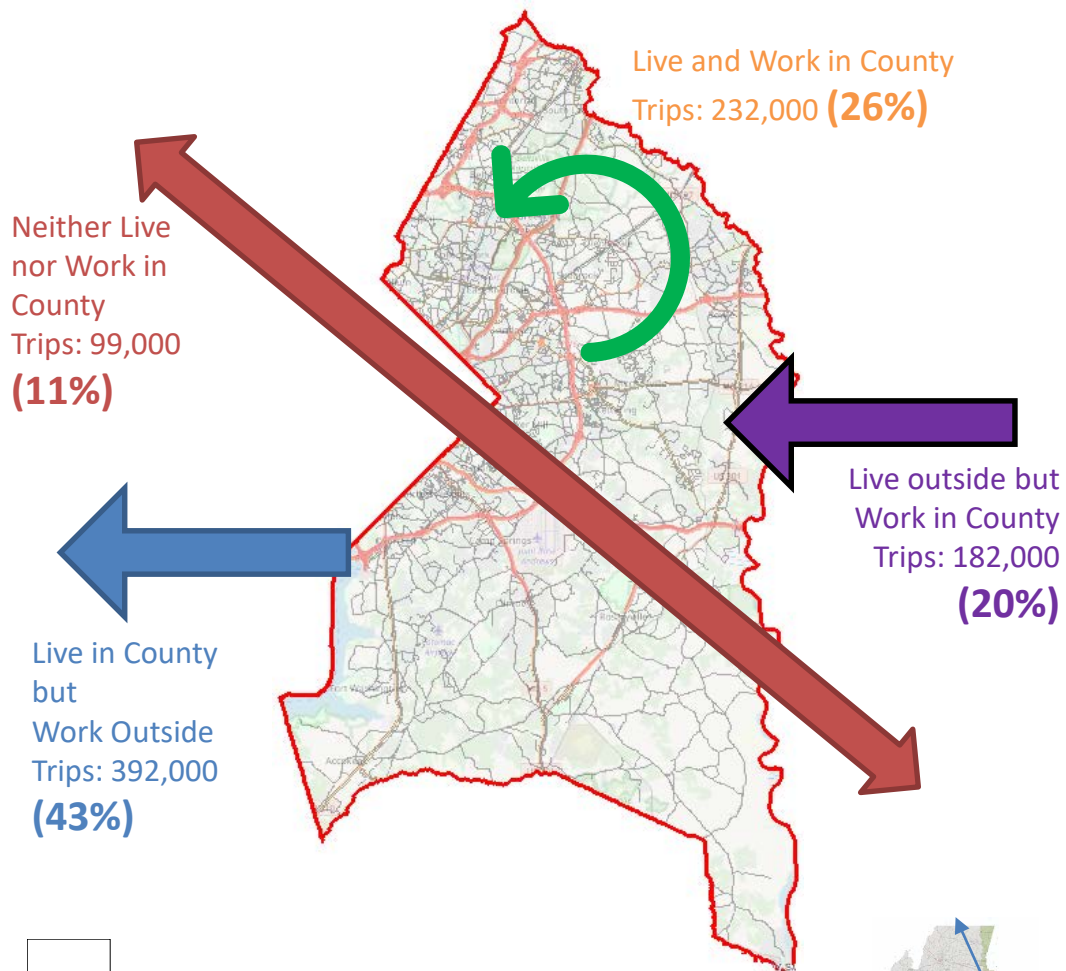
Source: CoStar, COG

Indicators

	Base Year	Data Available	Current Year	Data Available	Net Change	Target
On Track:						
Crime Rates	3,415	2014	2,466	2017	-949 ↓	⬇️
Foreclosure Rates	40%	2010	16%	2019	-24% ↓	⬇️
Unemployment Rates	9%	2014	6%	2017	-3% ↓	⬇️
Commuting Patterns	-100,147	2014	-80,168	2017	19,979 ↑	⬆️
Acres of Agricultural Land Preserved	47,134	2015	48,787	2018	1,653 ↑	⬆️
Improvement Required:						
Household networth or wealth	\$337,296	2010	\$307,956	2019	-\$29,340 ↓	⬆️
Obesity rates						
Obesity/overweight rates for adults	34%	2014	42%	2017	8% ↑	⬇️
Obesity/overweight rates for youth	14%	2013	16%	2016	2% ↑	⬇️
Commercial versus Residential Tax base	23%	2014	21%	2019	-2% ↓	⬆️
Vehicle miles traveled (per capita)	10,052	2010	10,380	2018	32 ↑	⬇️
Recycling rates	59%	2015	56%	2017	-3% ↓	⬆️

2015 DAILY TRAVEL COMMUTING PATTERNS *

WORK Trips using Prince George's County Roads: **905,000 (100%)**



* Based on work-trips from modeled year 2015.

**ANNUAL VEHICLE MILES TRAVELED IN PRINCE GEORGE'S COUNTY
in MILLIONS**

YEAR	PRINCE GEORGES COUNTY		MARYLAND STATE	
2010	8,767	15.6%	56,200	
2011	8,780	15.7%	56,100	
2012	8,804	15.6%	56,400	
2013	8,857	15.7%	56,500	
2014	8,818	15.6%	56,400	
2015	8,959	15.6%	57,300	
2016	9,205	15.6%	59,000	https://www.roads.maryland.gov/OPPEN/2017_Mobility_Report.pdf
2017	9,401	15.7%	60,000	https://www.roads.maryland.gov/OC/1SHA_AR_2017_final.pdf
2018	9,439	15.8%	59,629	https://www.roads.maryland.gov/OC/SHA_AR_2018_Final.%202011.pdf
2019				



Next Steps

- Complete review of the data sets and review with stakeholders
- Review pipeline data
- Review Plan 2035 indicator trends
- Add monitoring data to Plan 2035 website
- Complete evaluation of implementation strategies – Summer 2020
- **Finalize the Plan 2035 Monitoring Report – Early Spring 2020**

Contact Information

Kipling Reynolds
Division Chief, Community Planning
Division
kipling.Reynolds@ppd.mncppc.org
(301) 952-3047

Ted Kowaluk
Planner Coordinator
Special Projects Section, Countywide
Planning Division
ted.kowaluk@ppd.mncppc.org
(301) 952-3209

Adam Dodgshon
Planning Supervisor, Placemaking Section,
Community Planning Division
adam.dodgshon@ppd.mncppc.org
(301) 952-3153

Paul Patnode
GIS Specialist III
Data Resources Section, Information
Management Division
paul.patnode@ppd.mncppc.org
(301) 780-8167