



Potomac Interceptor

Kishia L. Powell
General Manager/CEO

Briefing for Prince George's
County Council
March 17, 2026

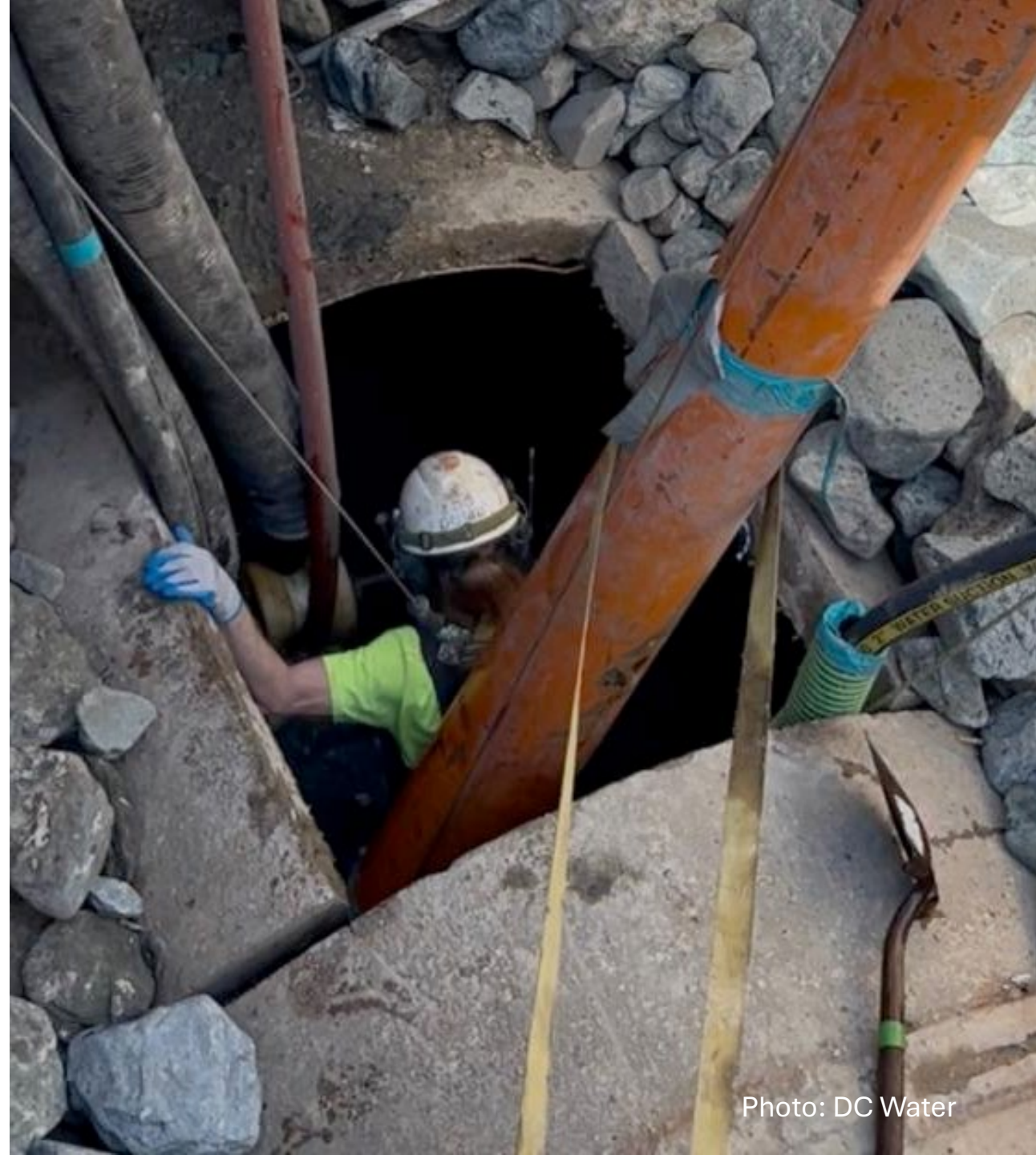


Photo: DC Water

Intermunicipal Agreement (IMA) Background

- Since the 1920's, WSSC Water has had agreements with D.C. concerning wastewater flow into the District.
- Today, over 60% of WSSC Water's wastewater flow is conveyed to and treated at Blue Plains.
- The 2012 Blue Plains Inter-Municipal Agreement (IMA) is the current agreement for regional sewer cooperation between six Parties: District of Columbia, Prince George's County, Montgomery County, Fairfax County, DC Water and WSSC Water.
- The IMA covers all aspects of the shared use of **Multi-Jurisdictional Use Facilities (MJUFs)** owned and operated by DC Water to convey and treat wastewater at the regional Blue Plains Wastewater Treatment Plant:
 - Wastewater treatment & Conveyance
 - Biosolids management
 - Capacity allocations
 - Equitable allocation of capital and O&M costs based on allocated capacity and use
 - Operational coordination
 - Cooperative planning for future wastewater flow and load capacity

BLUE PLAINS INTERMUNICIPAL AGREEMENT of 2012

[Effective: 4/3/13]

Among the
District of Columbia
District of Columbia Water and Sewer Authority
Fairfax County, Virginia
Montgomery County, Maryland
Prince George's County, Maryland
Washington Suburban Sanitary Commission



Governance, Counties' and WSSC Water's Role



DC Water Board

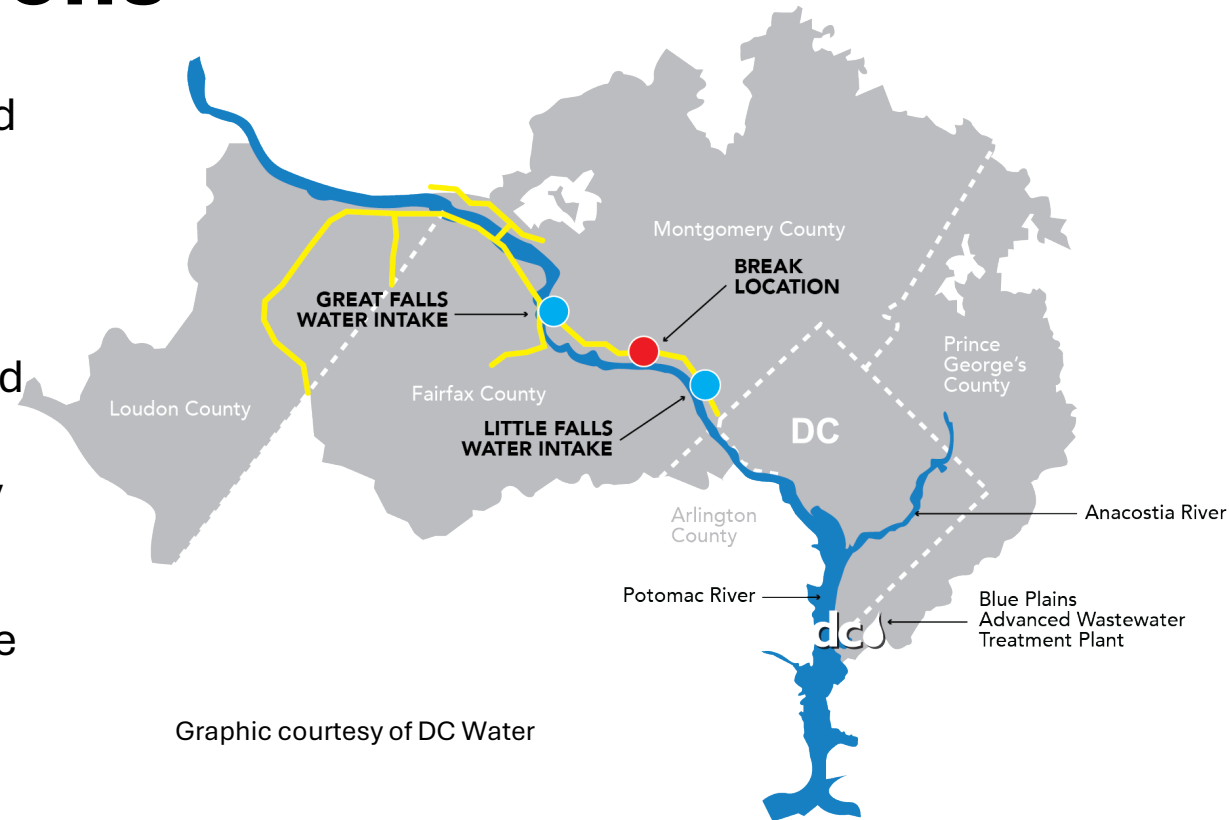
- Provides governance and oversight of DC Water and Sewer Authority.
- Comprised of representatives from four jurisdictions;
- Representation: District of Columbia (6), Prince Georges County (2), Montgomery County (2), Fairfax County (1).
- All Board members participate in decision making on matters that pertain to joint-use facilities.

IMA Governance

- Agreement between six parties governs how wastewater treatment services and related obligations are shared.
- Governance of the IMA is Committee-based (Leadership Committee, Regional Committee, other Sub Committees).
- WSSC Water is directly represented and actively participates.
- MWCOG provides impartial coordination, technical, and administrative support

WSSC Water's Use of the Potomac Interceptor and Obligations

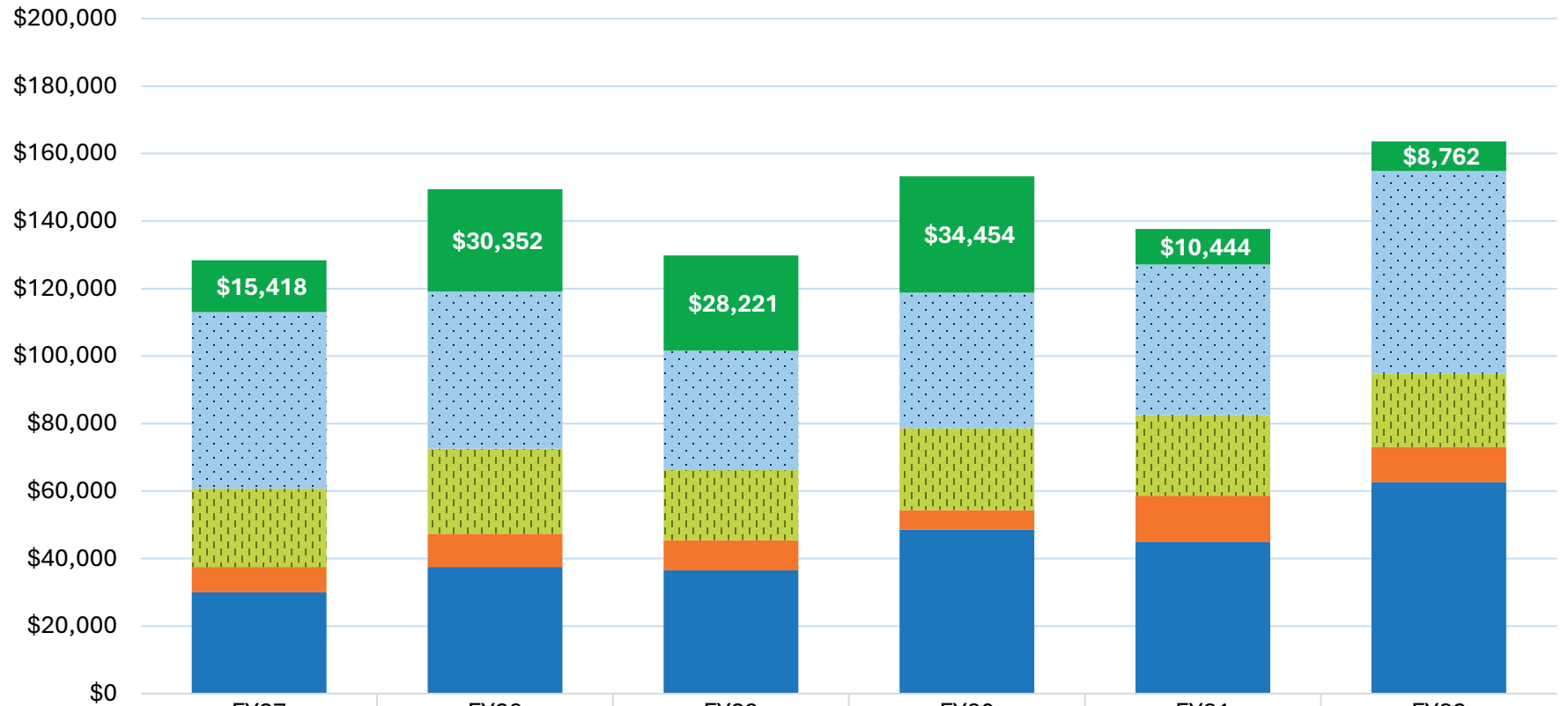
- WSSC Water contributes to the costs associated with the Potomac Interceptor based on its allocated capacity within specific segments of the pipe.
- For the segment of the interceptor that collapsed WSSC Water's cost share is 30.9 percent, with a portion of that share allocated to and paid for by the City of Rockville at 15.87 percent
- The costs associated with emergency repairs are subject to this cost share
- The estimate for the emergency work including repair and environmental rehabilitation has been stated as \$20M; WSSC Water is seeking greater clarity on the costs and how potential federal funding received by DC Water may offset costs the regional partners that are responsible for the costs.



Graphic courtesy of DC Water

DC Water's Blue Plains Programs included in WSSC Water's Proposed 6-YR (FY27 - FY32) CIP

With Proposed **Potomac Interceptor** Rehabilitation Projects



	FY27	FY28	FY29	FY30	FY31	FY32
■ Potomac Interceptor (PI) Rehab Projects	\$15,418	\$30,352	\$28,221	\$34,454	\$10,444	\$8,762
■ Pipelines and Appurtenances (other than PI)	52,277	46,573	35,377	40,129	44,700	60,112
■ Blue Plains Plant Wide (S-22.09)	23,203	25,126	20,796	24,318	23,860	21,689
■ Blue Plains Solids Mgmt (S-22.07)	7,549	9,929	8,911	5,780	13,618	10,416
■ Blue Plains Liquid Processing (S-22.06)	29,981	37,467	36,501	48,571	44,998	62,615
FY Totals:	\$ 128,428	\$ 149,447	\$ 129,806	\$ 153,252	\$ 137,620	\$ 163,594

Impact of DC Water’s Planned CIP Projects to Rehabilitate the **Potomac Interceptor**

- Potomac Interceptor Rehabilitation over WSSC Water's 6-yr CIP is \$128 million (includes City of Rockville's share ~ \$18 million)
- The impact of WSSC Water’s share (net of Rockville) of the capital costs for the Potomac Interceptor **for the full six-year plan**:
 - Additional \$8.1 million in annual debt service
 - Impact to sewer rates will be approximately +0.6%

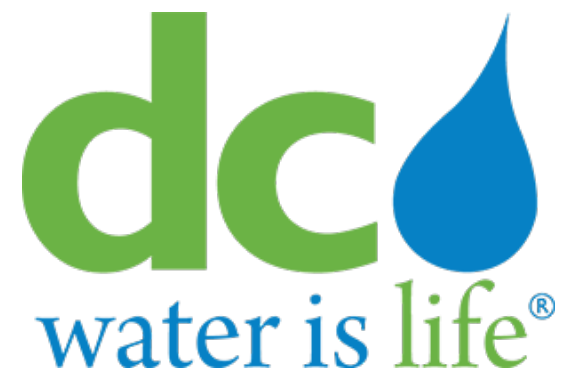
BLUE PLAINS PROGRAMS - 22.11 - POTOMAC INTERCEPTOR REHABILITATION

Bond Issuance	Six-Year	FY 2027	FY 2028	FY 2029	FY 2030	FY 2031	FY 2032
WSSC Water Sewage Disposal Bond	\$109,115,000	\$13,179,000	\$25,945,000	\$24,123,000	\$29,451,000	\$8,927,000	\$7,490,000

Operating Impact	Six-Year	FY 2027	FY 2028	FY 2029	FY 2030	FY 2031	FY 2032
WSSC Water Debt Service Payable	\$31,771,997	\$1,032,355	\$3,044,945	\$4,875,894	\$7,088,018	\$7,648,253	\$8,082,532

WSSC Water Rate impact:	0.1%	0.3%	0.4%	0.6%	0.6%	0.6%
--------------------------------	-------------	-------------	-------------	-------------	-------------	-------------

- Beyond FY32, the DC Water CIP includes an additional **\$69 million** (including ~ \$10 million for the Rockville share) for continuing work to rehabilitate the Potomac Interceptor.



Update on Emergency Response Work