

ITEM: 9

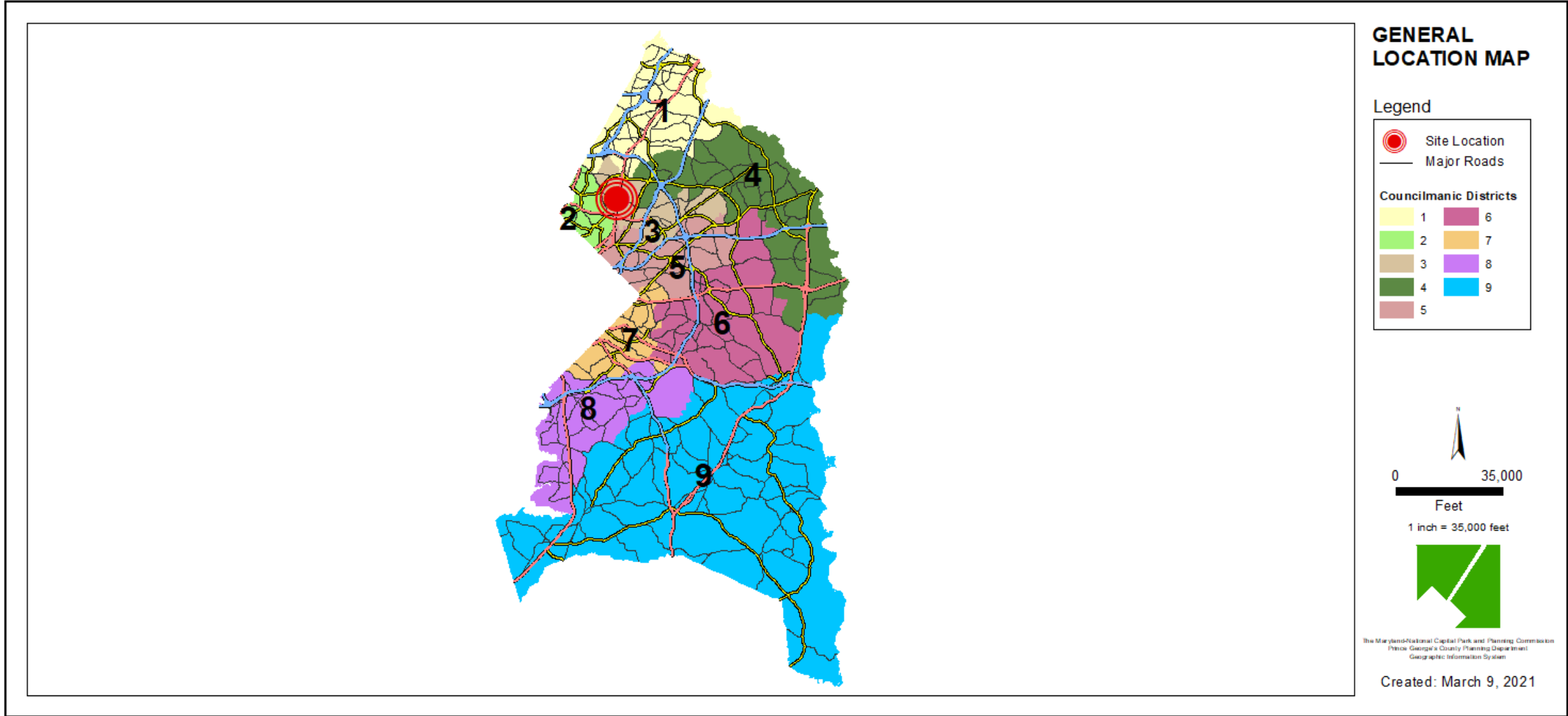
CASE: CSP-20002

TERRAPIN HOUSE

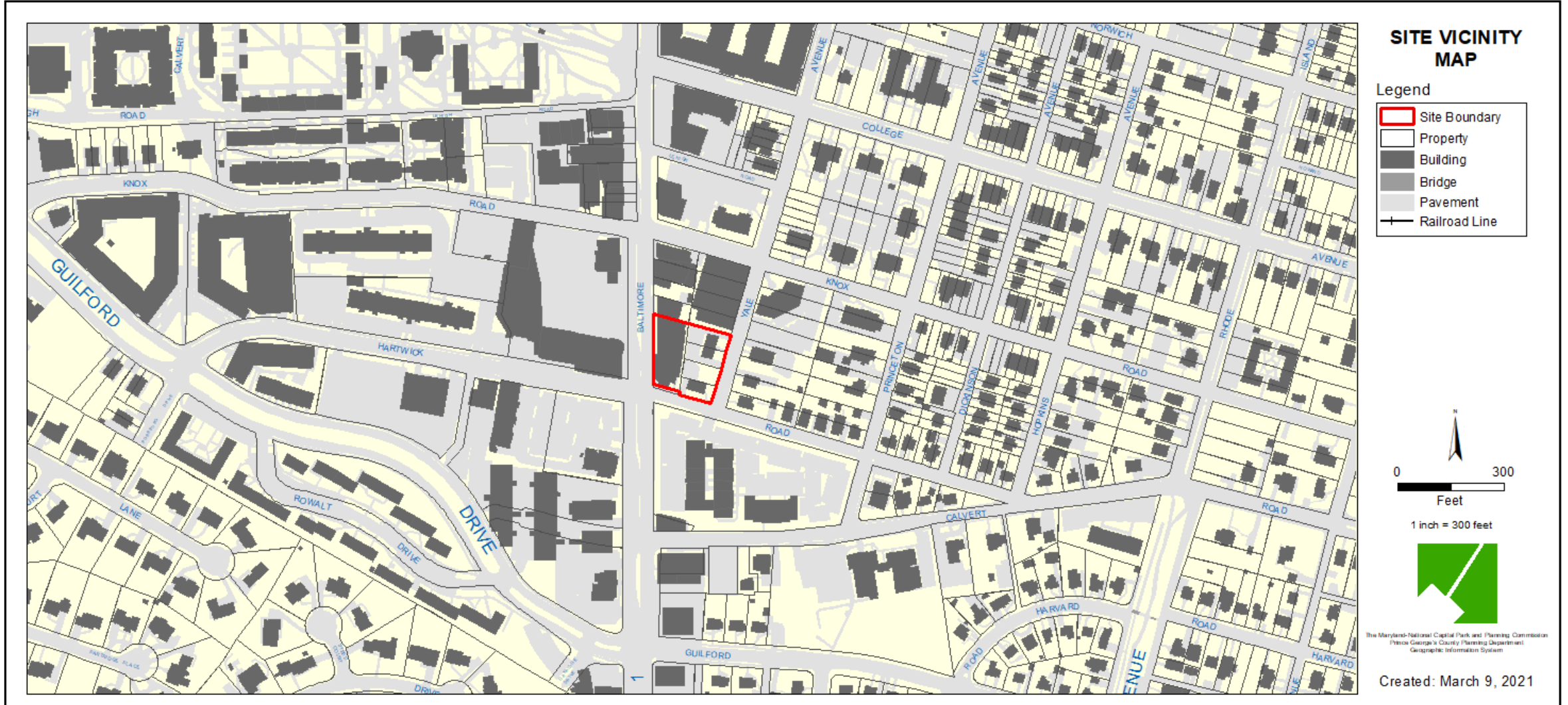
THE PRINCE GEORGE'S COUNTY PLANNING DEPARTMENT



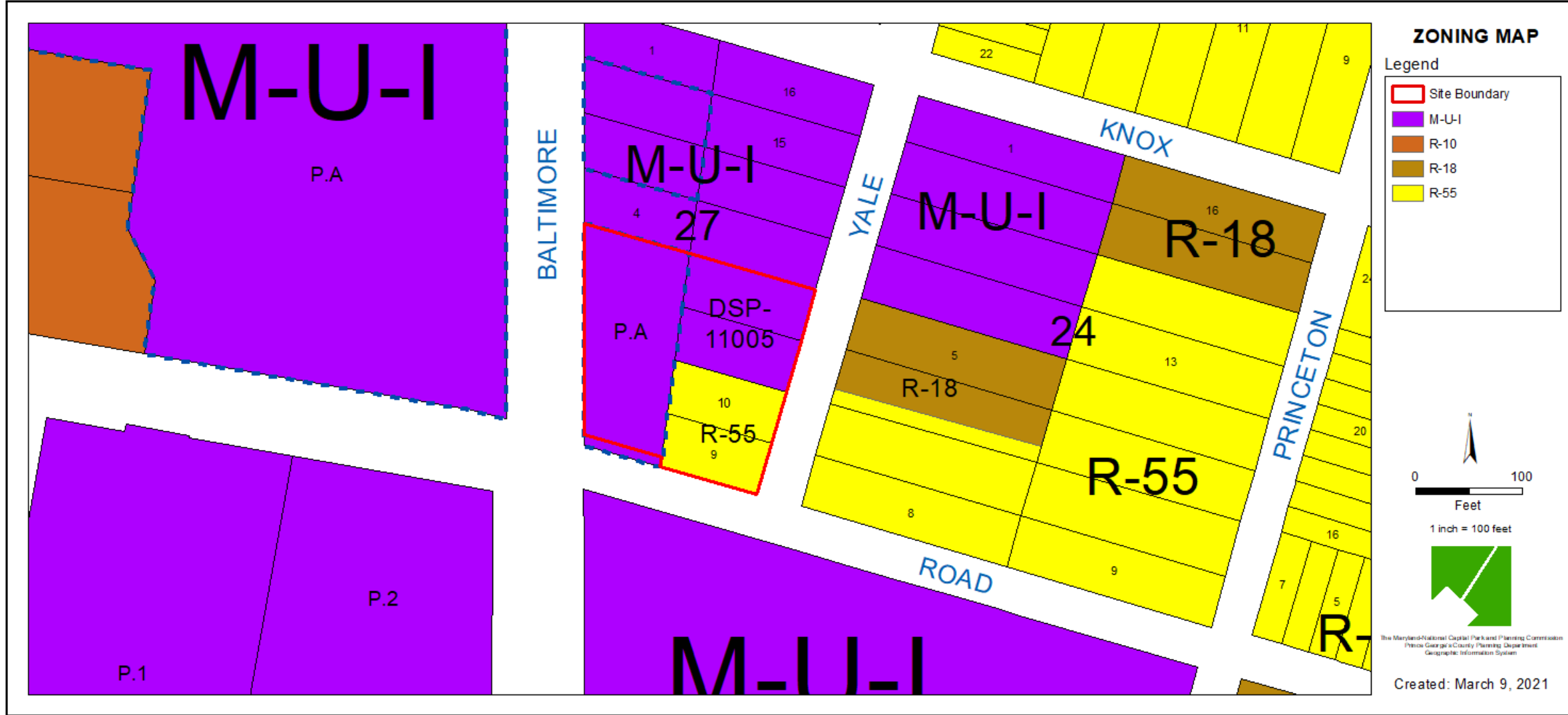
GENERAL LOCATION MAP



SITE VICINITY



ZONING MAP



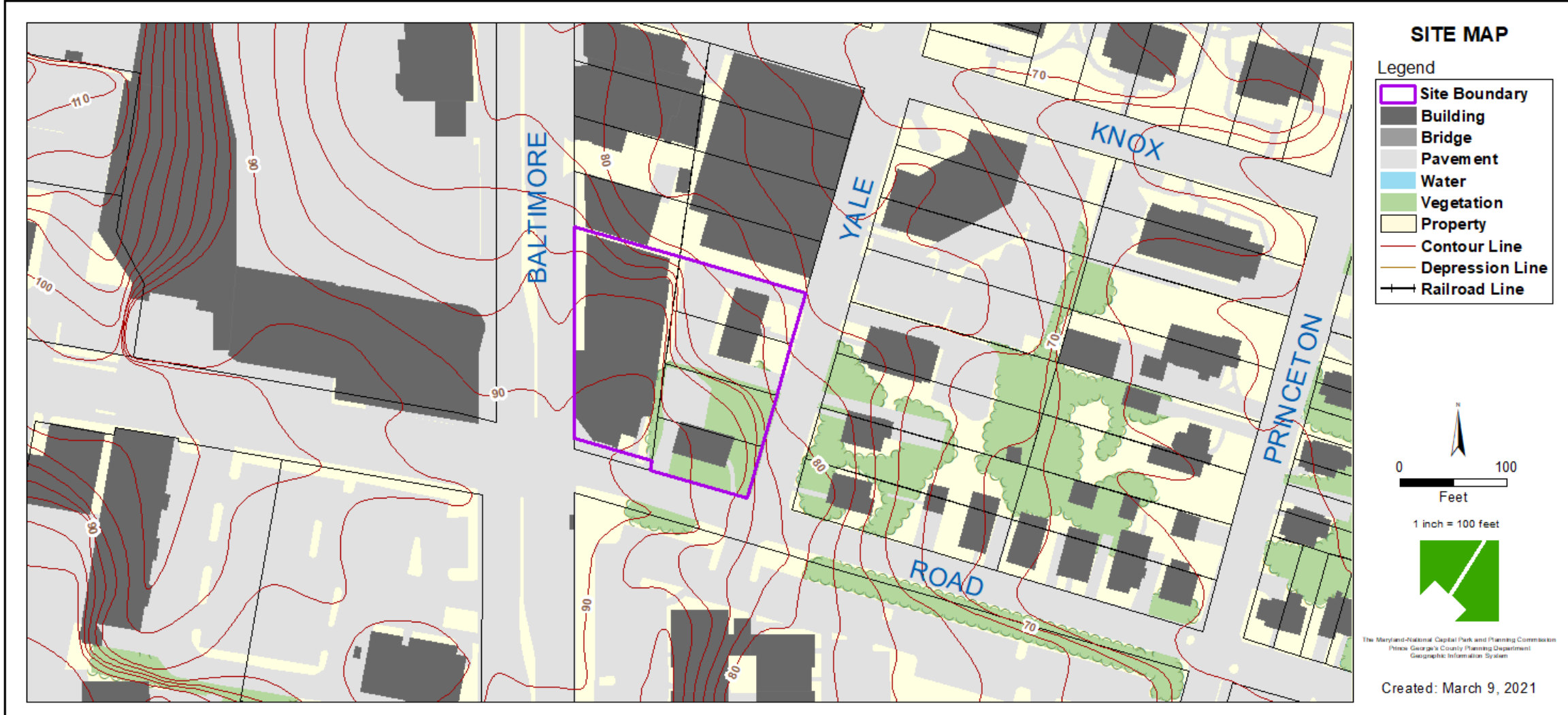
OVERLAY MAP



AERIAL MAP



SITE MAP



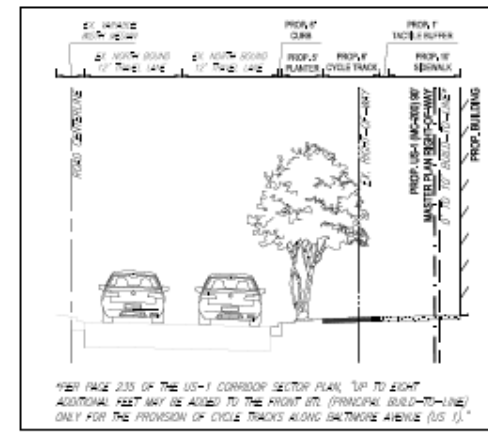
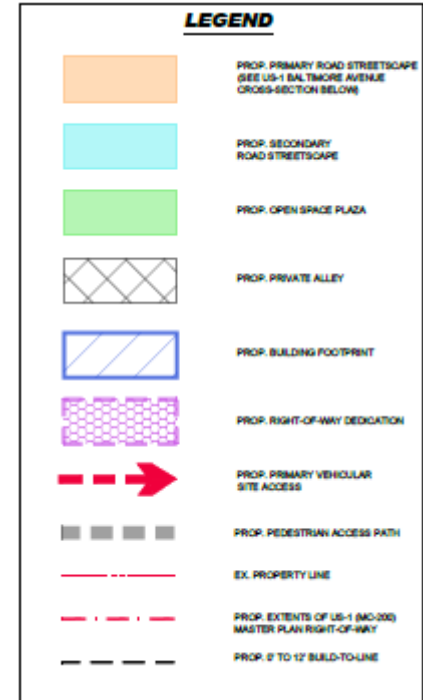
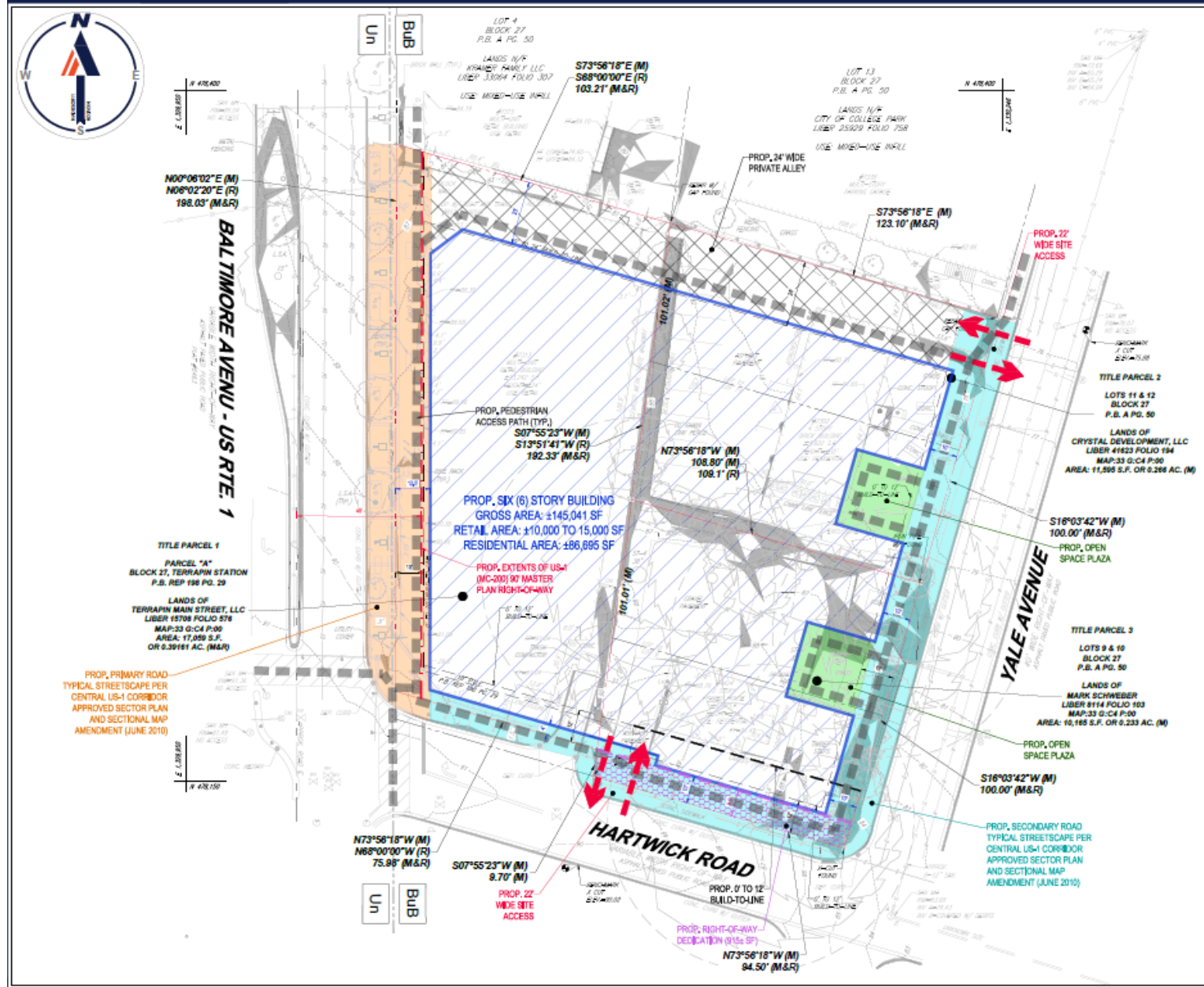
MASTER PLAN RIGHT-OF-WAY MAP



BIRD'S-EYE VIEW WITH APPROXIMATE SITE BOUNDARY OUTLINED



CONCEPTUAL SITE PLAN



US-1 BALTIMORE AVENUE CROSS-SECTION



CONCEPTUAL BUILDING ELEVATIONS



1 ELEVATION - BALTIMORE AVENUE
1/16" = 1'-0"



ELEVATION - HARTWICK ROAD



ELEVATION - YALE AVENUE

1/16" = 1'-0"

ILLUSTRATIVE BUILDING IMAGES



04

Perspective from Northwest
BALTIMORE AVENUE REDEVELOPMENT STUDY

January 11, 2021 | ©2021 Torti Gallas + Partners | 1330 Spring Stow, 4th Floor, Silver Spring, Maryland 20910 | 301.586.4800
 TORTI GALLAS + PARTNERS | TERRAPIN MAIN STREET, LLC



05

Perspective From Southwest
BALTIMORE AVENUE REDEVELOPMENT STUDY

January 11, 2021 | ©2021 Torti Gallas + Partners | 1330 Spring Stow, 4th Floor, Silver Spring, Maryland 20910 | 301.586.4800
 TORTI GALLAS + PARTNERS | TERRAPIN MAIN STREET, LLC

ILLUSTRATIVE BUILDING IMAGES



January 13, 2021 ©2021 Torti Gallas + Partners | 1330 Spring Street, 4th Floor, Silver Spring, Maryland 20910 | 301.506.8000
 TORTI GALLAS + PARTNERS TERRAPIN MAIN STREET, LLC

06
 Perspective from Southeast
 BALTIMORE AVENUE REDEVELOPMENT STUDY



January 13, 2021 ©2021 Torti Gallas + Partners | 1330 Spring Street, 4th Floor, Silver Spring, Maryland 20910 | 301.506.8000
 TORTI GALLAS + PARTNERS TERRAPIN MAIN STREET, LLC

07
 Perspective from Northeast
 BALTIMORE AVENUE REDEVELOPMENT STUDY