

**COUNTY COUNCIL OF PRINCE GEORGE'S COUNTY, MARYLAND**  
**2014 Legislative Session**

Resolution No. CR-11-2014  
Proposed by The Chairman (by request – County Executive)  
Introduced by Council Members Franklin and Davis  
Co-Sponsors \_\_\_\_\_  
Date of Introduction March 4, 2014

**RESOLUTION**

1 A RESOLUTION concerning

2           The 2008 Water and Sewer Plan (December 2013 Cycle of Amendments)

3 For the purpose of changing the water and sewer category designations of properties within the  
4 2008 Water and Sewer Plan.

5           WHEREAS, Title 9, Subtitle 5 of the Environment Article of the Annotated Code of  
6 Maryland requires the County to adopt a comprehensive plan dealing with water supply and  
7 sewerage systems, establishes the procedures governing the preparation and adoption of said  
8 plan, and provides for amendments and revisions thereto; and

9           WHEREAS, pursuant to said procedures, the County Executive submitted to the County  
10 Council his recommendations on water and sewer plan amendment requests within the December  
11 2013 Cycle of Amendments; and

12           WHEREAS, the County Council received testimony through an advertised public hearing  
13 on the December 2013 Cycle of Amendments; and

14           WHEREAS, the County Council notified the Washington Suburban Sanitary Commission,  
15 the Maryland-National Capital Park and Planning Commission, the State and County Health  
16 Departments, the Maryland Department of Planning and the Maryland Department of the  
17 Environment of the public hearing and provided each agency with copies of the December 2013  
18 Cycle of Amendments.

19           SECTION 1. NOW, THEREFORE, BE IT RESOLVED by the County Council of Prince  
20 George's County, Maryland, that the Prince George's County 2008 Water and Sewer Plan, as  
21 adopted by CR-91-2008, and amended by CR-17-2009, CR-52-2009, CR-5-2010, CR-19-2010,  
22 CR-82-2010, CR-20-2011, CR-4-2012, CR-19-2012, CR-27-2012, CR-71-2012, CR-20-2013,

1 CR-50-2013 and CR-92-2013 is further amended by adding the water and sewer category  
2 designations as shown in Attachment A, attached hereto and made a part hereof.

3 SECTION 2. BE IT FURTHER RESOLVED that maps identified as the “Prince George’s  
4 County, Maryland, 2008 Water Map” and “Prince George’s County, Maryland, 2008 Sewer  
5 Map”, are hereby amended to incorporate the approved category changes with the property  
6 location delineated on the maps in Attachment B, attached hereto and made a part hereof.

7 SECTION 3. BE IT FURTHER RESOLVED that within five working days of the adoption  
8 of this Resolution, it shall be transmitted to the County Executive by the Clerk of the Council.

9 SECTION 4. BE IT FURTHER RESOLVED that this Resolution shall take effect on the  
10 day following the first regularly scheduled Council meeting day which occurs after the County  
11 Executive transmits his comments on the Resolution, or on the day that the County Executive  
12 indicates he has no comments, or ten working days following the transmittal of this Resolution to  
13 the County Executive, whichever shall occur first. Prior to the effective date of this Resolution,  
14 the Council may reconsider its action based upon any recommendation received from the County  
15 Executive.

16 SECTION 5. BE IT FURTHER RESOLVED that upon the effective date of this  
17 Resolution, it shall be transmitted by the Clerk of the Council to the Secretary of the Maryland  
18 Department of the Environment.

Adopted this 22nd day of April, 2014.

COUNTY COUNCIL OF PRINCE  
GEORGE'S COUNTY, MARYLAND

BY: \_\_\_\_\_  
Mel Franklin  
Chairman

ATTEST:

\_\_\_\_\_  
Redis C. Floyd  
Clerk of the Council

**WATER AND SEWER CATEGORY AMENDMENT**

<b>Sewershed Application Council District</b>	<b>Development Proposal/ Tax Map Location</b>	<b>Acreage/ Zoning</b>	<b>Current Category</b>	<b>Requested Category</b>	<b>Executive's Recommendation</b>	<b>Council Approval</b>
<b><u>Parkway</u></b>						
13/PW-01 Westside (Parcel A)  District 1	58 townhouse units, minimum 2,100 SF and minimum sales \$350,000; 7 retail buildings with combined 200,000 SF of floor area 9 D-1, p/o Parcel A	15.21 M-X-T	5	3	3	3
<b><u>Western Branch</u></b>						
13/W-02 Cabin Branch Village  District 6	212 townhouse units, minimum 1,848 SF and minimum sales \$324,900; 2 retail buildings with combined 8,600 SF of floor area 90 C/D-2/3, Parcels 137, 147, 148, 149, 172, 199 & 201	24.61 M-X-T	S5	S4	S4	S4
13/W-03 Wellons Property  District 6	No development proposed; 93 B-4, Parcel 146, Lots 1, 2 & 17	7.75 M-X-T	5	4	4	4
<b><u>Piscataway</u></b>						
13/P-02 Aggregate Industries Kirby Road Facility  District 9	No new development proposed; existing buildings 116 A-1, p/o Parcel 100	45.61 I-2	5	3	3	3

<b>APPLICATIONS</b>		<b>REQUEST</b>	<b>MAP #</b>
<b><u>Parkway</u></b>			
13/PW-01	Westside (Parcel A)	5 to 3	1
<b><u>Western Branch</u></b>			
13/W-02	Cabin Branch Village	S5 to S4	2
13/W-03	Wellons Property	5 to 4	3
<b><u>Piscataway</u></b>			
13/P-02	Aggregate Industries Kirby Road Facility	5 to 3	4



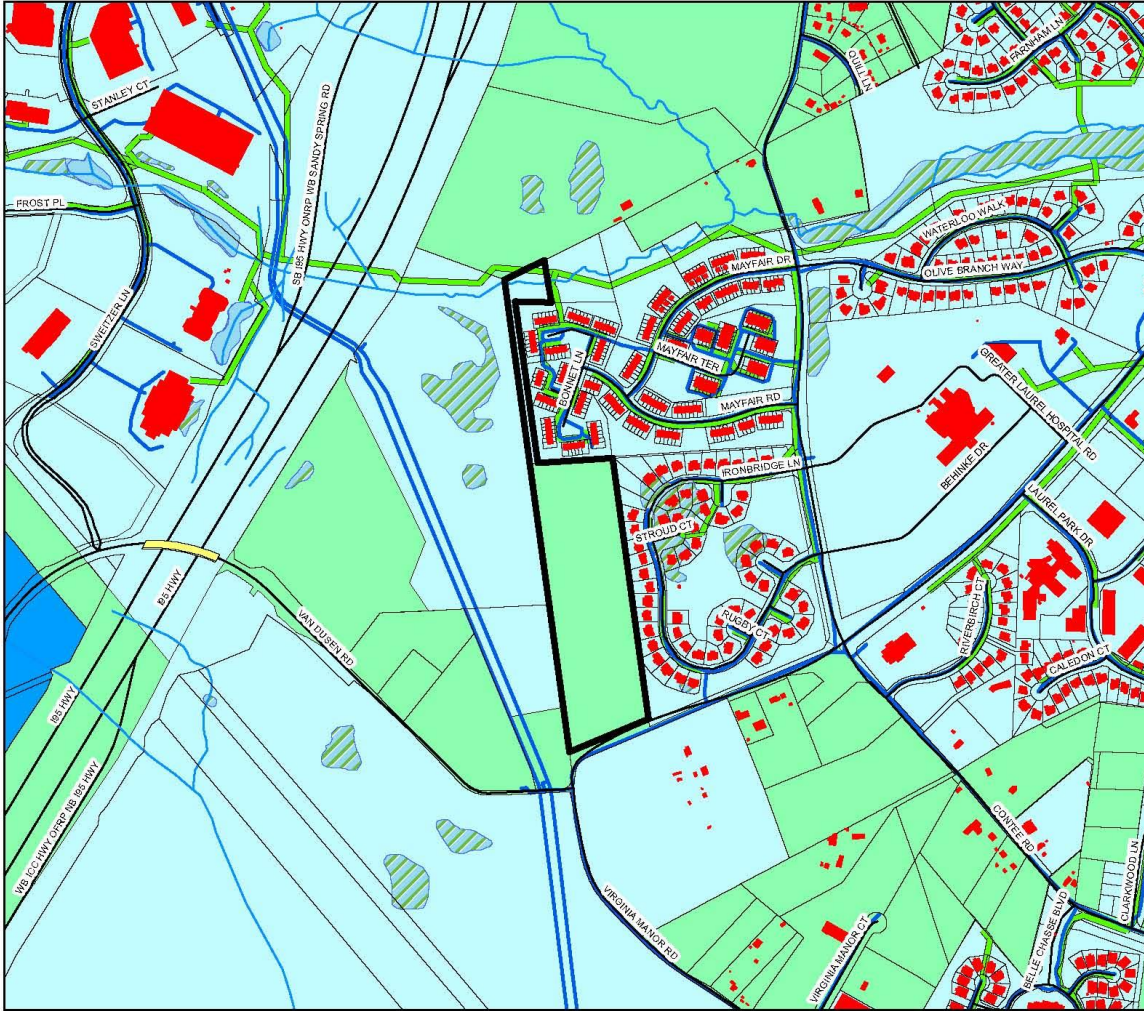
Water and Sewer Plan Amendments

Amendment Request 5 to 3

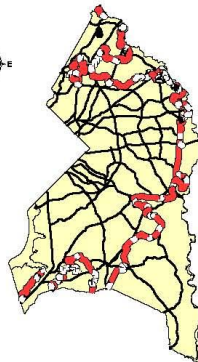
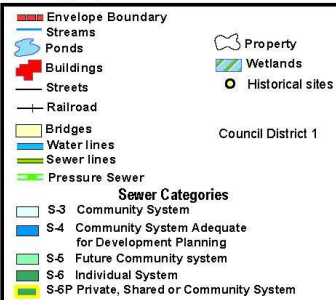


Westside (Parcel A) 13/PW-01

December 2013 Application



Department of Environmental Resources  
Sustainable Infrastructure Division  
Program Support Section  
WGISerials\_A\_Cycle Maps 2/13





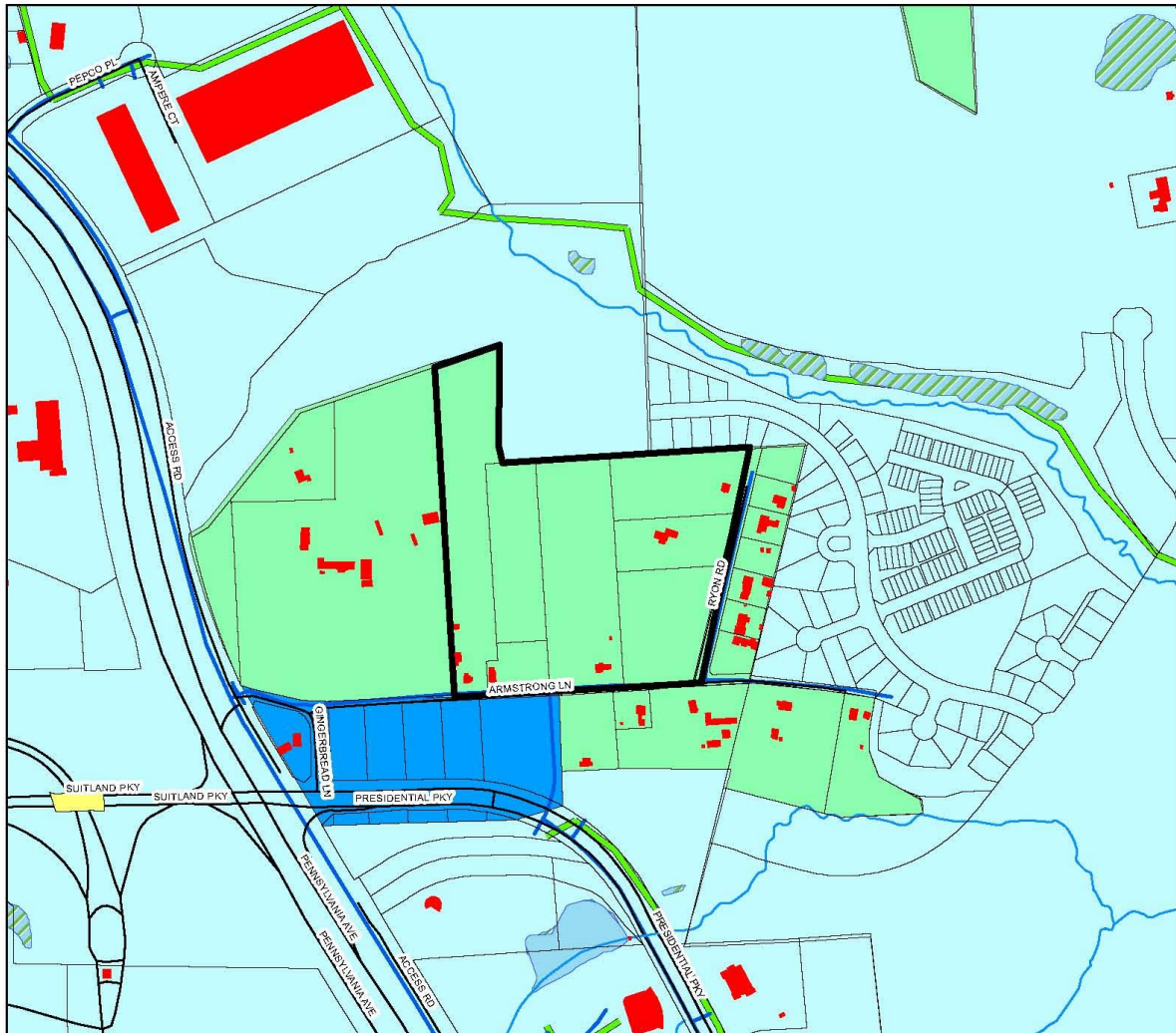
Water and Sewer Plan Amendments

Amendment Request S5 to S4

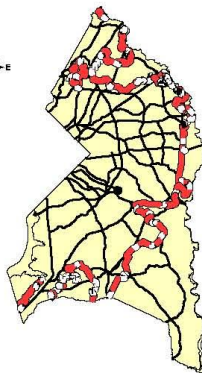
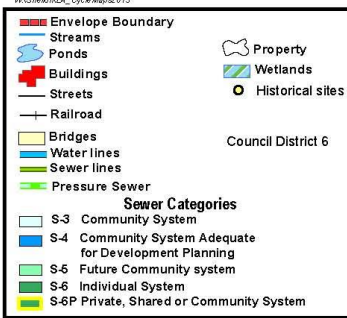


**Cabin Branch Village 13/W-02**

December 2013 Application



Department of Environmental Resources  
Sustainable Initiatives Division  
Program Support Section  
W:\S\Info\GIS\_Cycle\Mapset\013





Harlem L. Baker, III  
County Executive

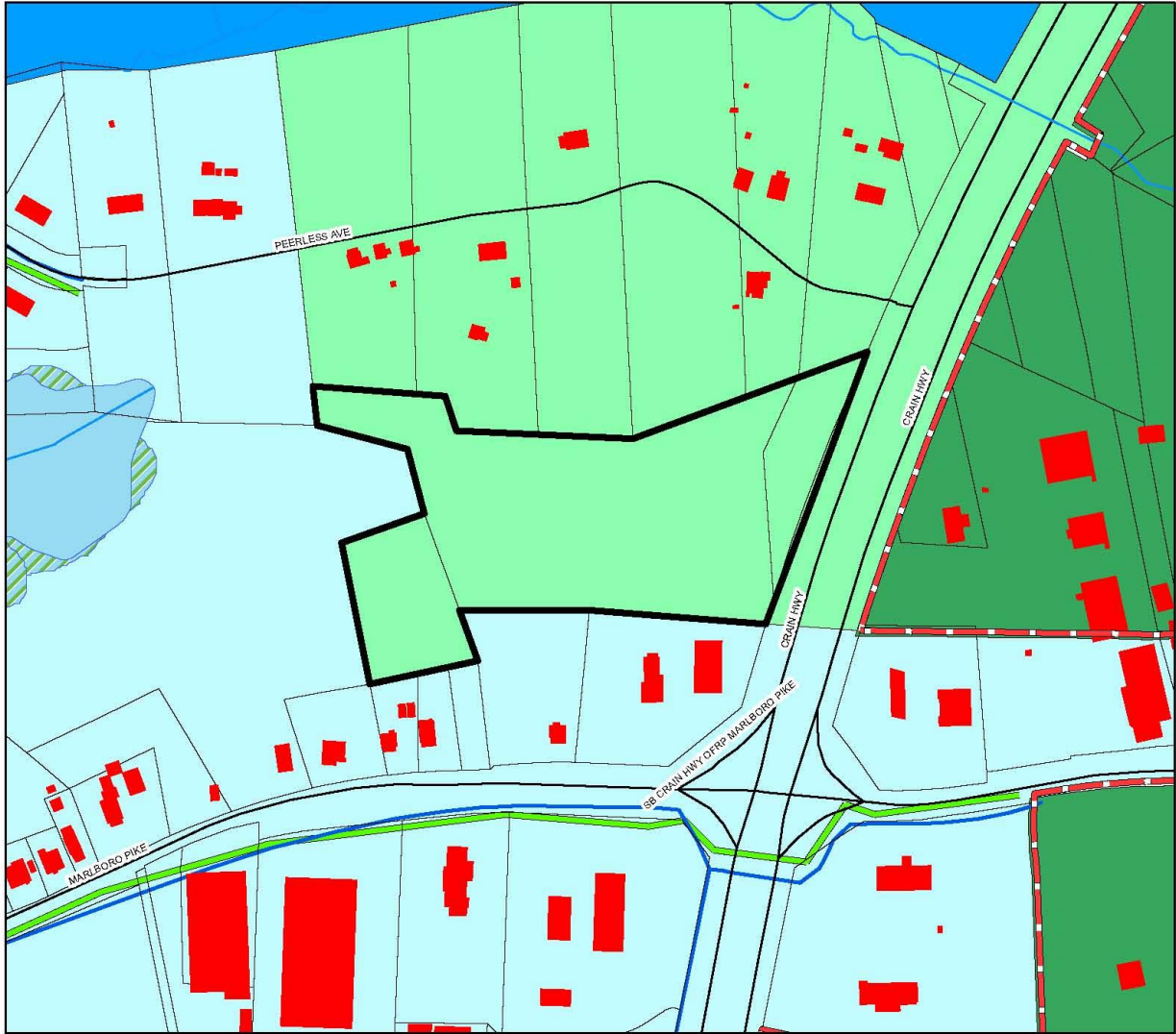
Water and Sewer Plan Amendments

Amendment Request 5 to 4

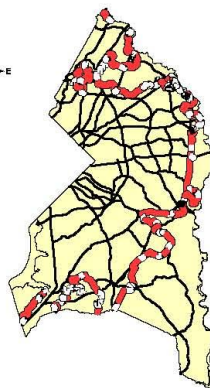


**Wellons Property 13/W-03**

December 2013 Application



Department of Environmental Resources  
Sustainable Initiatives Division  
Program Support Section  
WAS/ke/PLA\_Cycle Maps 2013





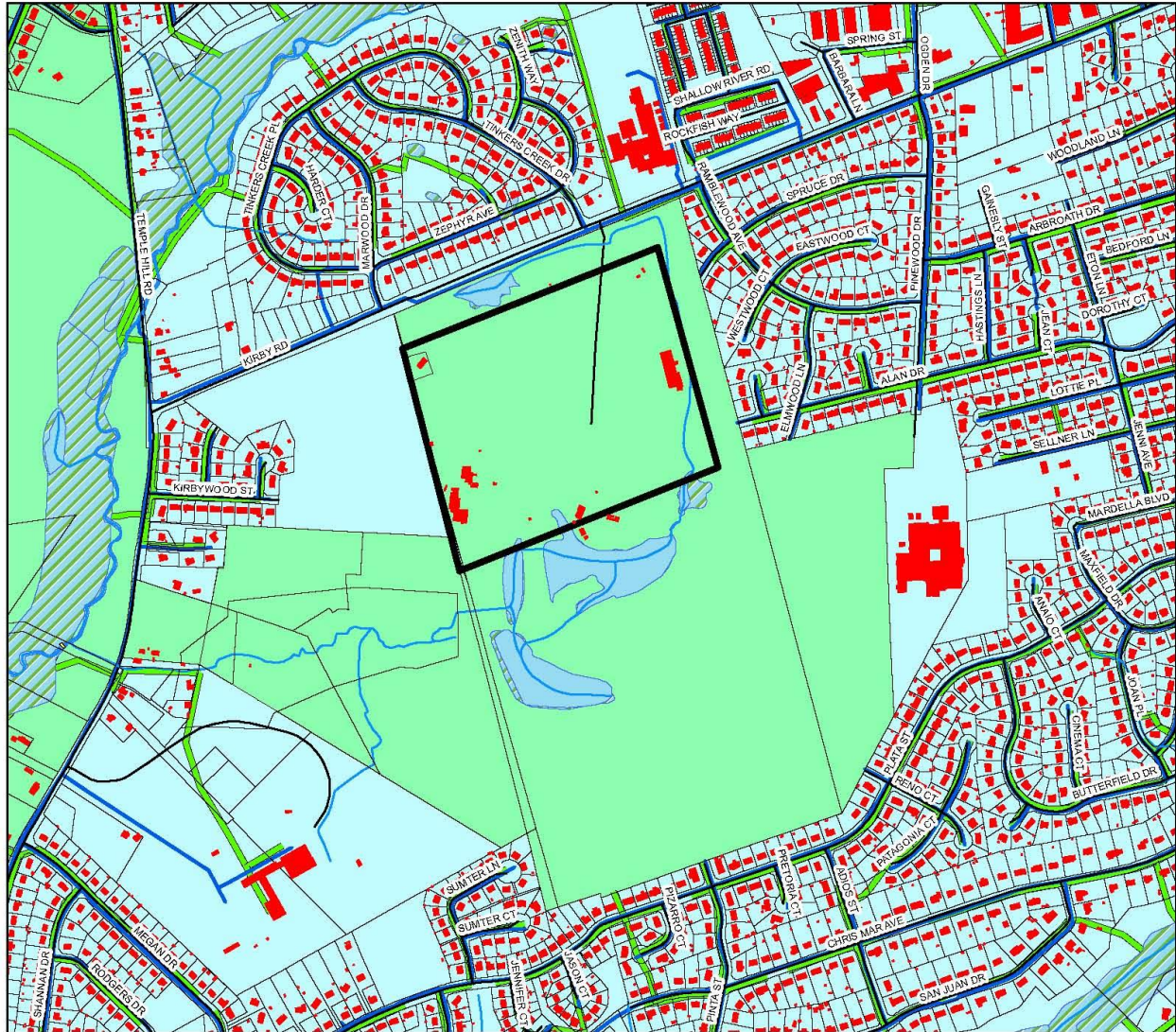
Water and Sewer Plan Amendments

Amendment Request 5 to 3



**Aggregate Industries  
Kirby Road Facility 13/P-02**

December 2013 Application



Department of Environmental Resources  
Sustainable Initiatives Division  
Program Support Section  
W:\S\h\h\LA\_Cycle\Map\2013

- |  |                    |             |                  |
|--|--------------------|-------------|------------------|
| Envelope Boundary                                      | Streams            | Buildings   | Property         |
| Ponds  | Wetlands           | Streets     | Historical sites |
| Railroad   | Council District 9 | Bridges     |                  |
| Water lines  |                    | Sewer lines |                  |
| Pressure Sewer   |                    |             |                  |
| <b>Sewer Categories</b>                                |                    |             |                  |
| S-3 Community System                                   |                    |             |                  |
| S-4 Community System Adequate for Development Planning |                    |             |                  |
| S-5 Future Community system                            |                    |             |                  |
| S-6 Individual System                                  |                    |             |                  |
| S-6P Private, Shared or Community System               |                    |             |                  |

