

Health Care Strategy

The Healthcare Landscape in SW Prince George's County



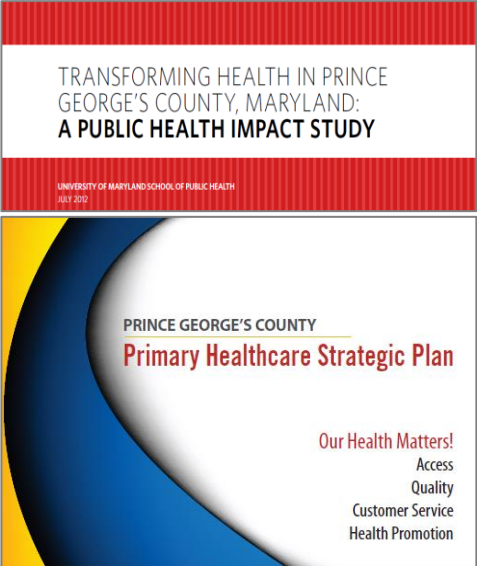
HealthCare Access in SW Prince George's Co.

County's Healthcare Access Landscape

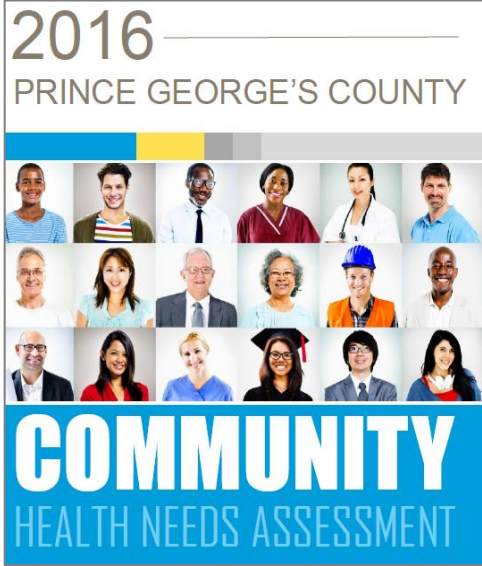
- Do we have enough in numbers?
- Do we have enough in services?
- Are they accessible from anywhere in the county?
- Are they in reasonable shape?

Past Studies

2012



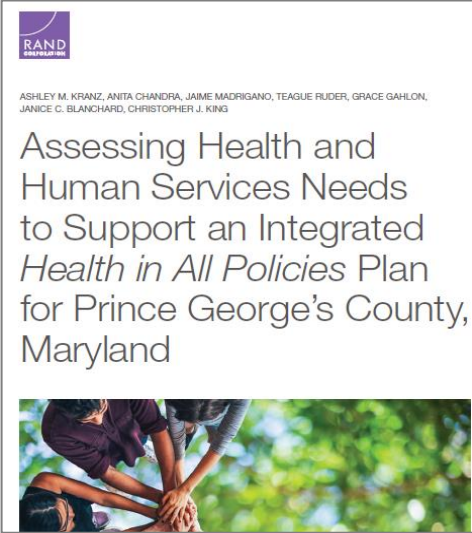
2016



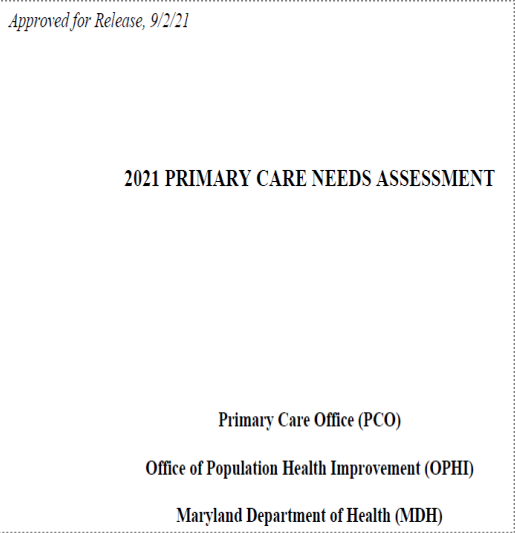
2019



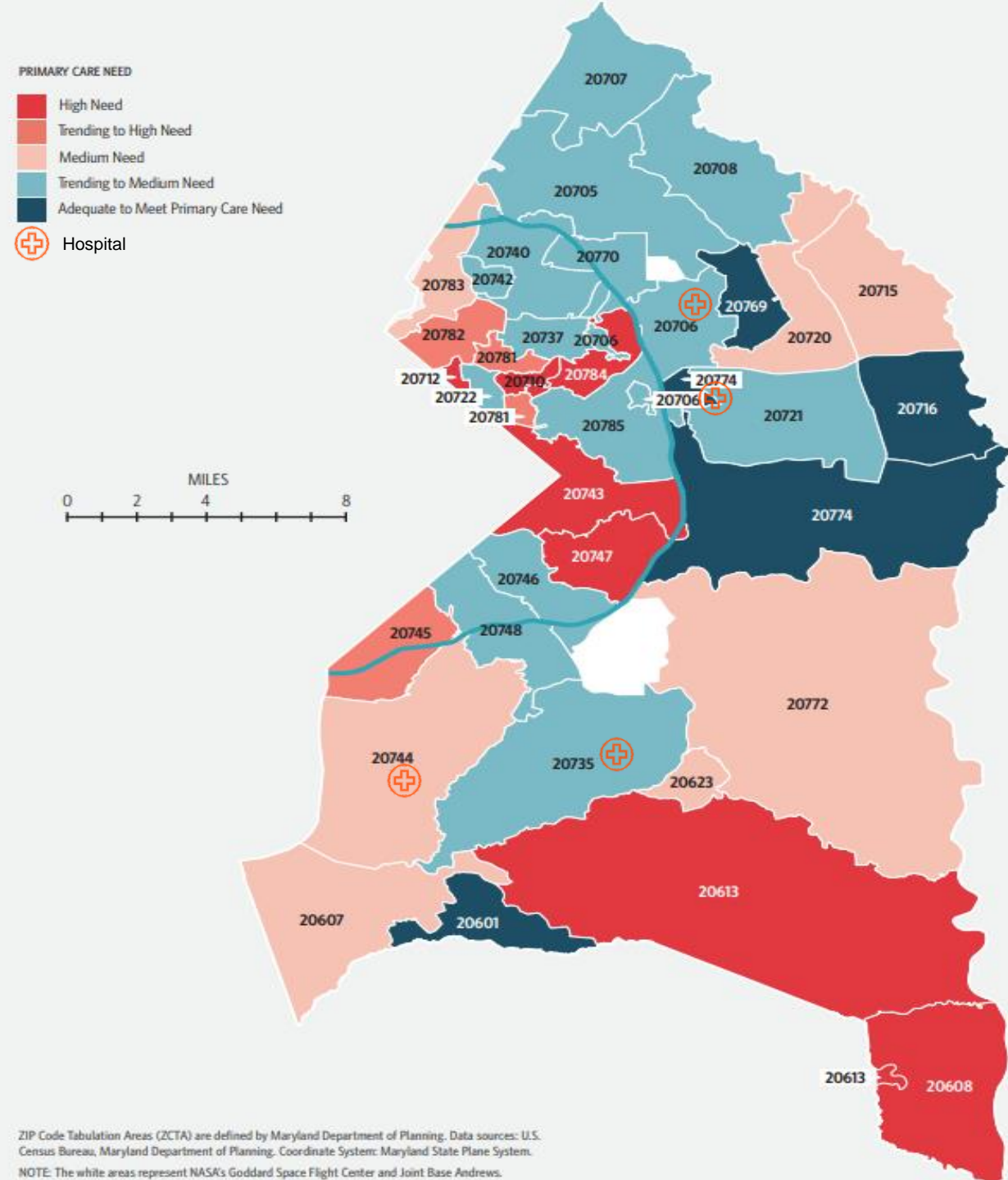
2020



2021



Primary Care Need in Prince George's County



To MD Average.... MHCC Planning Zones

Region/Counties	Population*	IP Beds**	IP Beds/100K Population
Western Maryland	506,687	723	138.15
Montgomery County	1,062,061	1,286	121.09
Southern Maryland	1,277,275	935	69.76
Prince George's County	910,551	670	69.27
Central Maryland	1,894,254	5,930	212.19
Eastern Shore	372,314	527	141.04
Maryland	6,037,624	9,401	152.19
US	329,824,950	920,531***	279.10

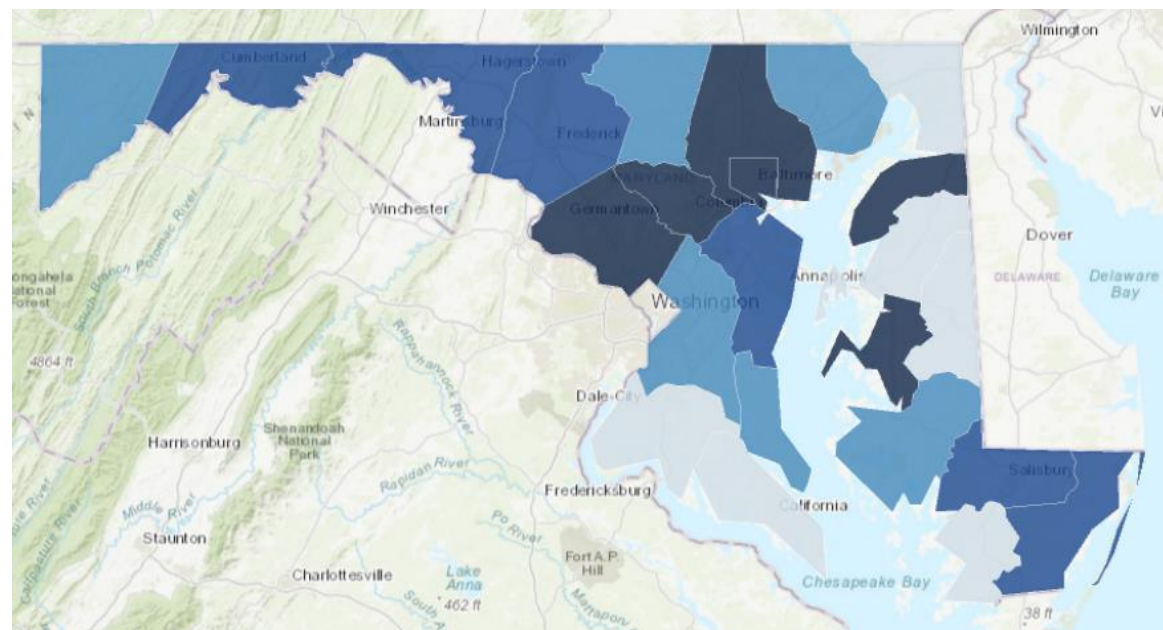
Source: *2020 US Census Data

**https://mhcc.maryland.gov/mhcc/pages/hcfs/hcfs_hospital/documents/acute_care/chcf_Licensed_Acute_Care_Beds_by_Hospital_and_Service_%20Maryland_FY2020.pdf

***<https://www.aha.org/statistics/fast-facts-us-hospitals> (staffed beds)

Enough in Numbers? - Physician Capacity

Maryland MDs Distribution per 100,000



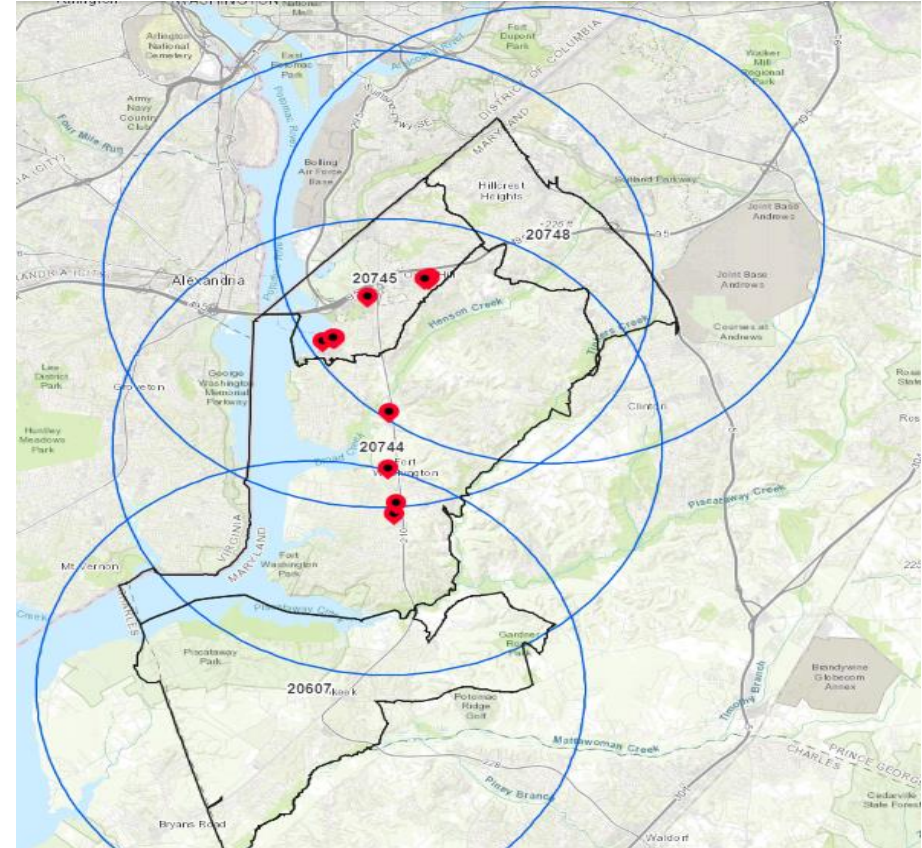
Physician FTE Rate (per 100,000 population)

	Prince George's County	Montgomery County	Howard County
Primary Care	64.75	191.86	220.60
Pediatrics	13.96	54.48	53.32
Family Medicine	18.91	29.85	39.31
Internal Medicine	29.13	100.21	121.27
Occupational Medicine	0.66	1.43	1.52
General Practice	1.32	2.00	2.74
Medical Specialists			
Urology	1.54	5.99	4.27
Psychiatry	6.60	36.41	41.44
Gastroenterology	2.20	9.22	12.80
Cardiovascular Disease	4.40	14.07	15.23
Dermatology	1.87	9.98	5.48
Surgical Specialties			
General	6.16	21.49	19.81
Ophthalmology	3.96	17.21	11.58
Obstetrics and Gynecology	7.59	30.99	28.95
Hospital-based			
Emergency Medicine	7.15	23.77	31.08
Active MD	204.81	971.94	832.11

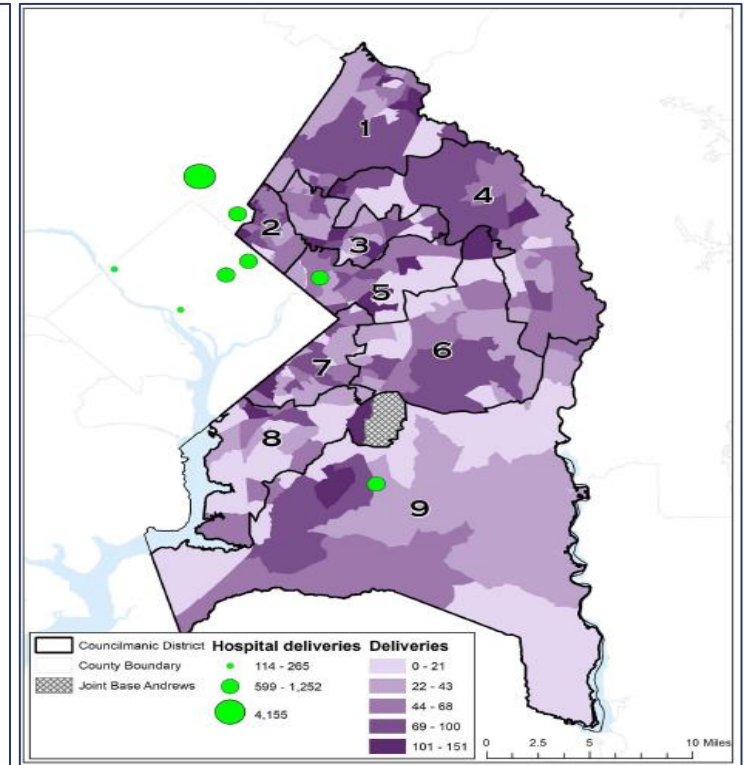
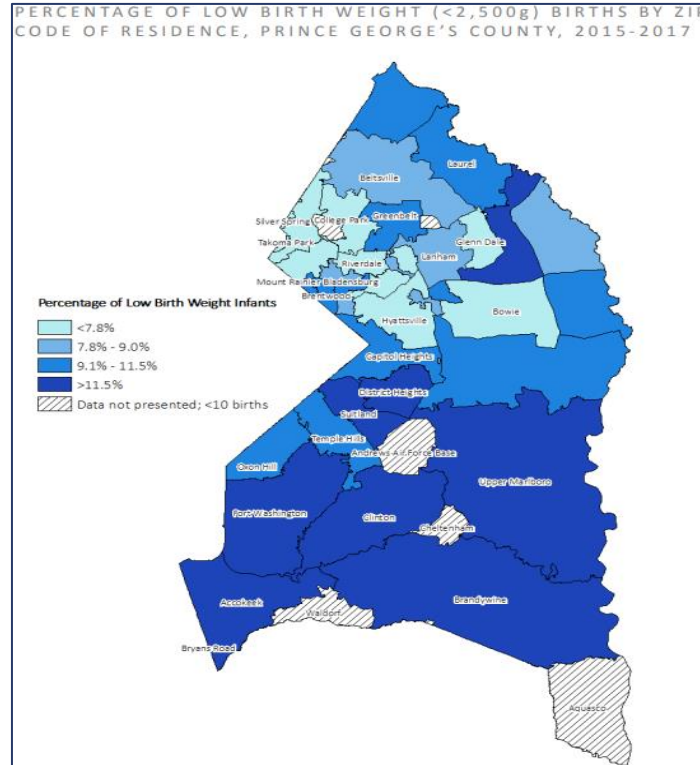
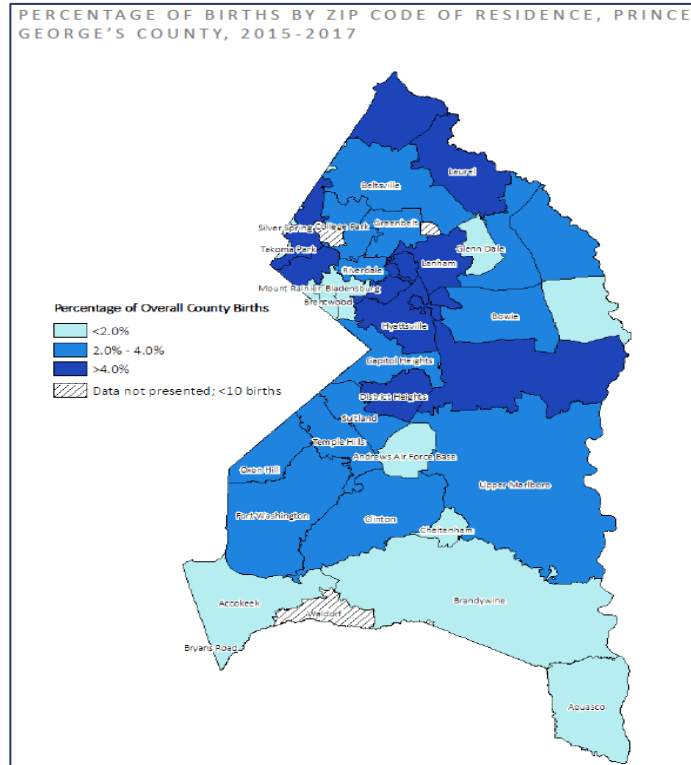
Source: Area Health Resources File, 2020-2021

Leasable Medical Office Space?

- Limited space for provider and other outpatient services
- Available space is aging



Resources and Outcomes - Maternity Health



Source:

- 1). 2019 Maternal and Infant Health Report, PGC DOH
- 2). Assessing Health and Human Services Needs to support an integrated health in all policies plan for Prince George's county, MD, 2020

Resources and Outcomes – Behavioral Health

Figure D.5.
Rates of Inpatient Hospitalizations for Adults for Behavioral Health Conditions per 100,000 population in 2017, by ZIP code

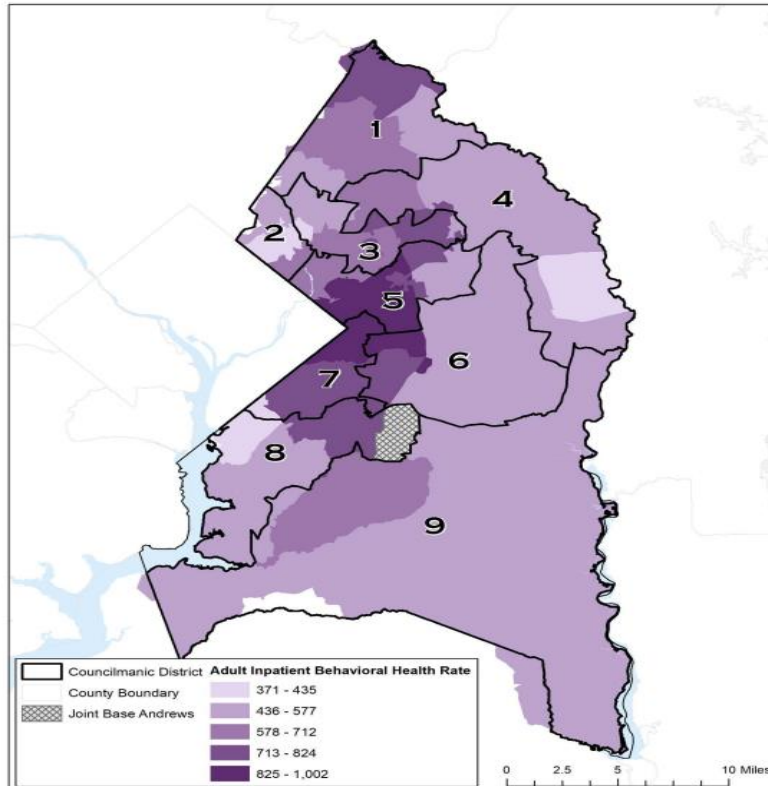
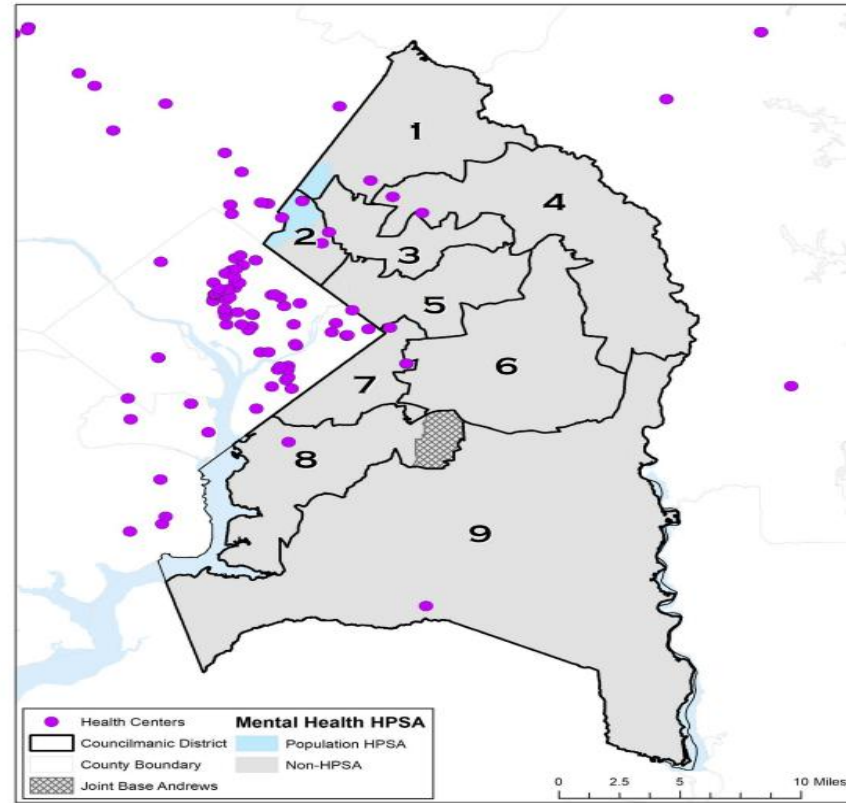


Figure 4.3.
Mental Health Professional Shortage Areas in Prince George's County, 2018



HealthCare Access in SW Prince George's County

AHC's Plan

1. Build New Hospital with
 - Bigger Capacity
 - Broader Capability
2. Build Robust Physician Network
3. Create Ambulatory Access Points

New Hospital Campus

- AHC is committed to building more than a new hospital
- We want to partner with the county to facilitate reshaping of SW PGC, beyond healthcare



Physicians and Advanced Practitioners



Shaun Khosla, MD
Orthopedic Surgery



Ramee Badr, MD
Orthopedic Surgery



Jillian Hobbs, PA-C
Orthopedic PA



Farid Quraishi, DPM
Podiatry



Eleisha Flanagan, MD
General Surgery



Felipe Rodriguez, MD
General Surgery



Carlin Williams, MD
Vascular Surgery



Alfred Carroll Burris II, MD
Interventional Cardiology



Ogechi Anyakou, MD
Internal Medicine



Nicole Haskins, CRNP
Family Nurse Practitioner



Kasra Adham, MD
Gastroenterology



Tuesday Cook, MD
Bariatric Surgery



Sandra Johnson, MSN, FNP-C
Bariatric Coordinator



Jeffrey Stone, MD
Emergency Medicine



Michelle Harper, MD
Emergency Medicine



Ron Brathwaite, MD
Internal Medicine



Dmitri Gagarin, MD
Internal Medicine



Chintu Sharma, MD
Internal Medicine



M. Montgomery, MD
Anesthesia

Medical Office Building – National Harbor

- AHC majority lease holder
 - 55,000 square feet
- Program
 - Ambulatory Surgery Center
 - Cancer Center
 - Wound Care and HBO Center
 - Vascular Clinic
 - Imaging Center
 - Specialty Offices
 - Rehab



Medical Pavilion II at National Harbor. Image courtesy of Seavest Healthcare Properties

Medical Office Space – Fort Washington

- To be built prior to hospital
- Program
 - FQHC
 - Specialty Access Center with an integrated physician model
 - Primary and Specialty Care
 - Imaging Center
 - Education Center





You are our advocates, join us in our journey...

Connect with us, and join our mailing list for updates

www.adventistfwmc.com/ForYou



(Scan Here)