



Today's Agenda

General Overview of the
Prince George's County
2018 Water and Sewer Plan

The Water and Sewer Plan

- Directly/indirectly guided by Federal law* and required by State law
- Ensures public water and sewer will be available and affordable
- Goal of the Plan:
 - Ensures County meets all regulatory requirements;
 - Supports managed growth;
 - Protects environmental quality
- Tool for the County to stage development consistent to growth and demand

Review Process for Plan Adoption

■ Regulators/Agencies/other Stakeholders

- Maryland Department of the Environment*
- Maryland Department of Planning
- Office of the County Executive
- County Council
- DoE (*Water and Sewer Plan administration transferred to DPIE 07/17*)
- M-NCPPC
- WSSC
- Health Department
- DPIE
- Development Community

* Regulator of the Water and Sewer Plan

1.1 LEGAL AUTHORITY

Maryland State law and implementing regulations govern the County's Water and Sewer Plan.

- Appendix A -- Environment Article, Title 9, Subtitle 5, "County Water and Sewerage Plans," Sections 9-501 through 9-521 of the Annotated Code of Maryland
- Appendix B -- Code of Maryland Regulations, Title 26, "Department of the Environment," Subtitle 3, Chapter 1, "Planning Water Supply and Sewerage Systems" (COMAR 26.03.01.01 - .08).

What's Included in the 2018 Water and Sewer Plan?

■ General Contents

- Drafted revision through Year-End 2018
- Amendments through August 2019
 - Legislative
 - Administrative
 - Plan 2035 Compliance

Plan Goals

- To meet all regulatory requirements and ensure adequacy of the water and sewer system (See MDE/MDP regulations);
- To support managed development in Prince George's County ; and,
- To protect and enhance the environmental and sustainable quality of Prince George's County through sound water and sewer planning.

Plan Objectives

- Provide orderly expansion of community water supply and sewer systems
- Provide for adequate treatment facilities
- Provide methods of financing
- Identify and protect the quality and quantity of water resources and wastewater discharges
- Enhance the quality of life

Plan Objectives --continued

- Meet the objectives of inter-agency agreements
- Implement the goals of the Prince George's County General Plan – **Plan 2035**
- Ensure the integrity of the Sewer Envelope
(*GP 2035 Growth Boundary*), Rural Tier, and Sustainable Growth Act boundaries (Tiers I, II, III IV)

What's Included in the Plan?

■ Chapter Contents

- Chapter 1 – “Introduction” *(DPIE, M-NCPPC)*
- Chapter 2 – “Framework for Water and Sewer Planning” *(M-NCPPC)*
- Chapter 3 – “Water Plan for Community Systems” *(WSSC)*
- Chapter 4 – “Sewer Plan for Community Systems” *(WSSC)*
- Chapter 5 – “Rural Sanitation” *(PGCHD)*
- Chapter 6 – “Procedures for Adopting or Amending the Plan” *(DPIE)*

What's Different?

- Coordination with new County plans, programs and policies
- Highlights emerging water and sewer planning issues
- Map revisions and category adjustments
- Proposes changes to the Amendment Processes
- General updates and corrections – Text
- Correction of Drafting errors - Maps

Coordination with County Plans and Policies

- Assures consistency with state, county and local plans and policies
 - New planning and policy documents
 - **Plan 2035** and other Functional Master Plans
- Inclusion of policies governing :
- » Water Resources Plan
 - » Watershed Implementation Plan (WIP)
 - » Sustainable Growth Act (SB 236)
 - » Sustainable and innovative practices

Highlight revised and emerging water and sewer planning issues

- Revised issues incorporated into the 2018 Plan
 - Strategic planning for sewage treatment and transmission capacity
 - Sanitary Sewage Overflow (SSO) Consent Decree and required improvements
 - SGA Tiers replace GP 2002 Tiers
 - Unserved and Underserved areas (sewer)
 - Water re-use (grey water)
 - Water conservation

Highlight emerging water and sewer planning issues ...*continued*

- The County vision(s) on Green and Sustainable initiatives, and other environmental matters that affect water and sewer planning

General Updates and Corrections

- All data reviewed and updated
- New maps on:
 - Rural Tier/Sewer Envelope/Growth Boundary
 - High Quality (Tier II) Waters*
 - Geologic Formation*
 - Zoning *
 - Land Use*
 - Government Institutions*
 - Sustainable Growth Act Tiers*
- All Category Change amendments since 2008

Proposed Changes to the Amendment Process

- Enhance amendment criteria
 - Fiscal impact on County services
 - Adherence to Plan 2035, Functional Master Plans, and other plans/policies
- Revise amendment processes
- Restructured and Increased Fees
 - *More closely related to costs associated with review processing and inflation*

2018 Water and Sewer Plan

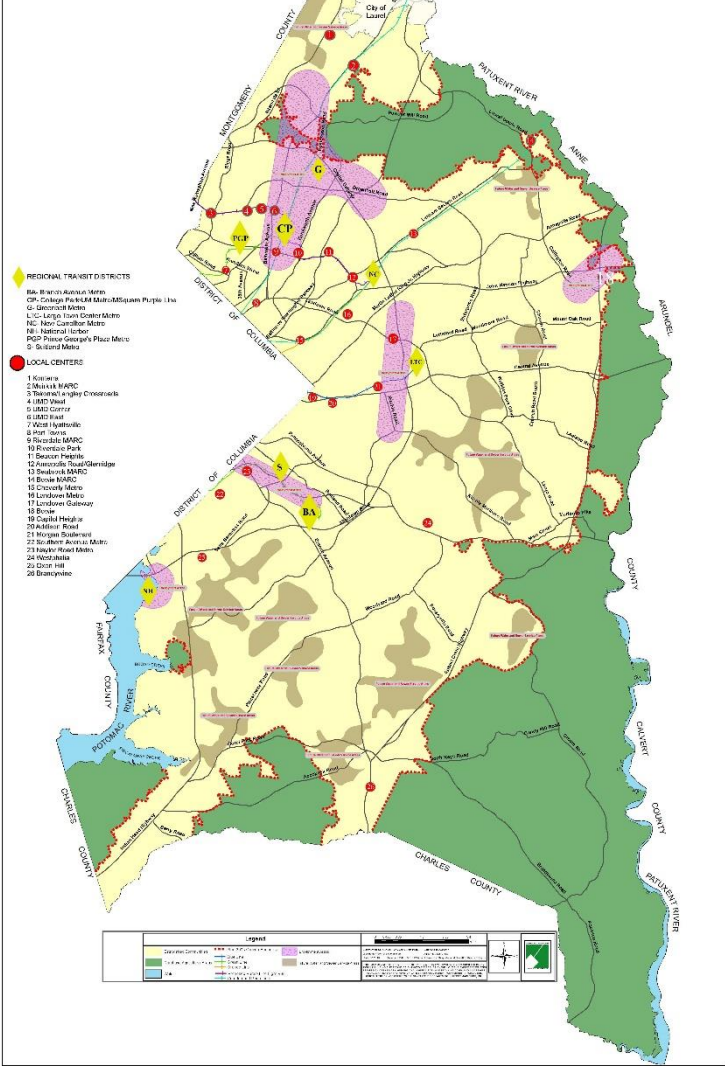
Appendices

- Appendix A – the State Environment Article, Title 9, Subtitle 5
- Appendix B – the Annotated Code of Maryland Regulation Title 26, Subtitle 03
- Appendix C – Water Category Map (updated 09.09.19)
- Appendix D – Sewer Category Map (updated 09.09.19)
- Appendix E – Glossary
- Appendix F – WSSC Standard Procedures #0 96-01
- Appendix G – Final Draft – W & S Extensions
...unserved and underserved

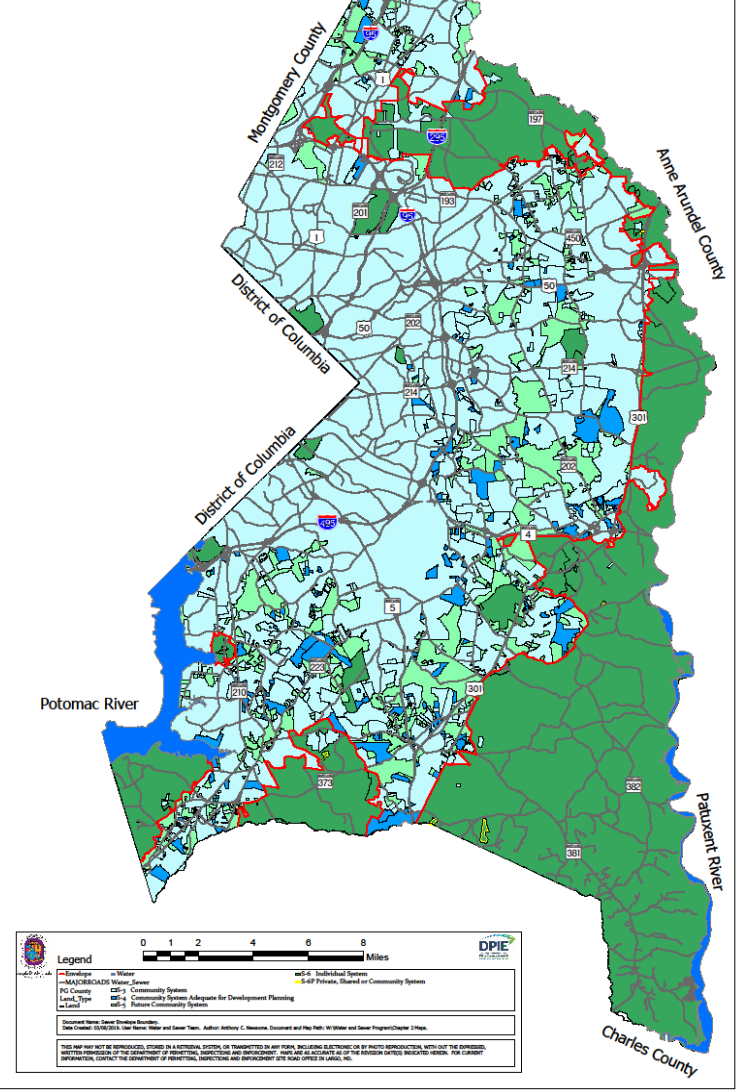
Map Revisions and Category Adjustments

- Maps approved as part of the Plan
 - All amendments since CR-91-2008 (*on-going*)
- *Sewer Envelope* boundary designations
 - Compliance with adopted General Plan 2035 Growth Boundary and amendments

Prince George's County Growth Policy Map
 Prince George's County
 Maryland
 Map 2-8



Map 2-1
 Sewer Envelope Boundary
 Prince George's County
 Maryland

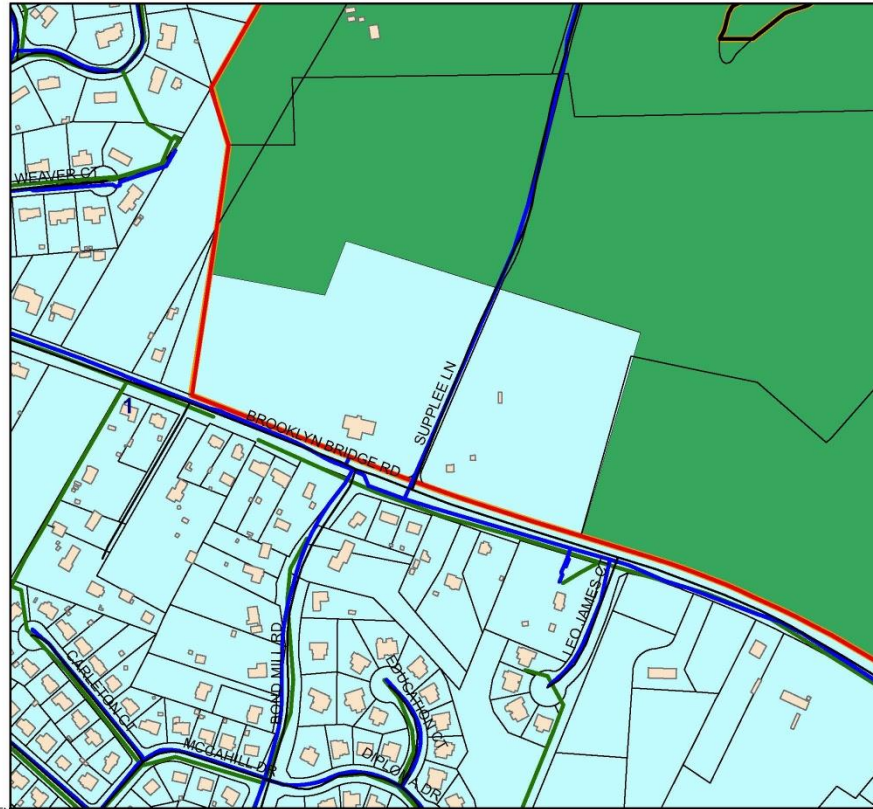




Revisions (Handouts)

- Text revisions for Appendix 2-2 and Appendix 2-3 (09.09.19)
- Revised Water Map (09.09.19)
- Revised Sewer Map (09.09.19)

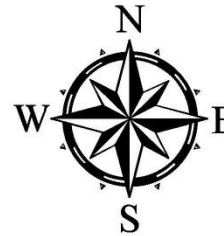
West Laurel Recreational Center WSSC Grid 221NE06



Legend

- Beltway
- GISDEVRDCENTERLINES
- C_WATR_PIPE
- C_SSWR_PIPE_GRAV
- C_SSWR_PIPE_PRES
- 2018 Plan Proposed Envelope
- COUNCILMANIC
- GISDEVBUILDINGS_NoRepres
- GISDEV.PROPERTY
- County-wide_Floodplain
- GISDEV.CBCA_Overlay_2015_Py
- GISDEV.GenPln_2035_Growth_Bndry_Py
- domantcategories



- S-3 Community System
- S-4 Community System Adequate for Development Planning
- S-5 Future Community System
- S-6 Individual System
- S-6P Private, Shared or Community System
- W-3 Community System
- W-4 Community System Adequate for Development Planning
- W-5 Future Community System
- W-6 Individual System
- W-6P Private, Shared or Community System



West Laurel Recreational Center WSSC Grid 221NE06

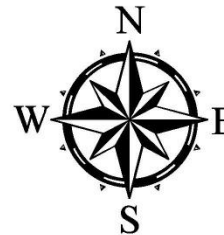


Legend

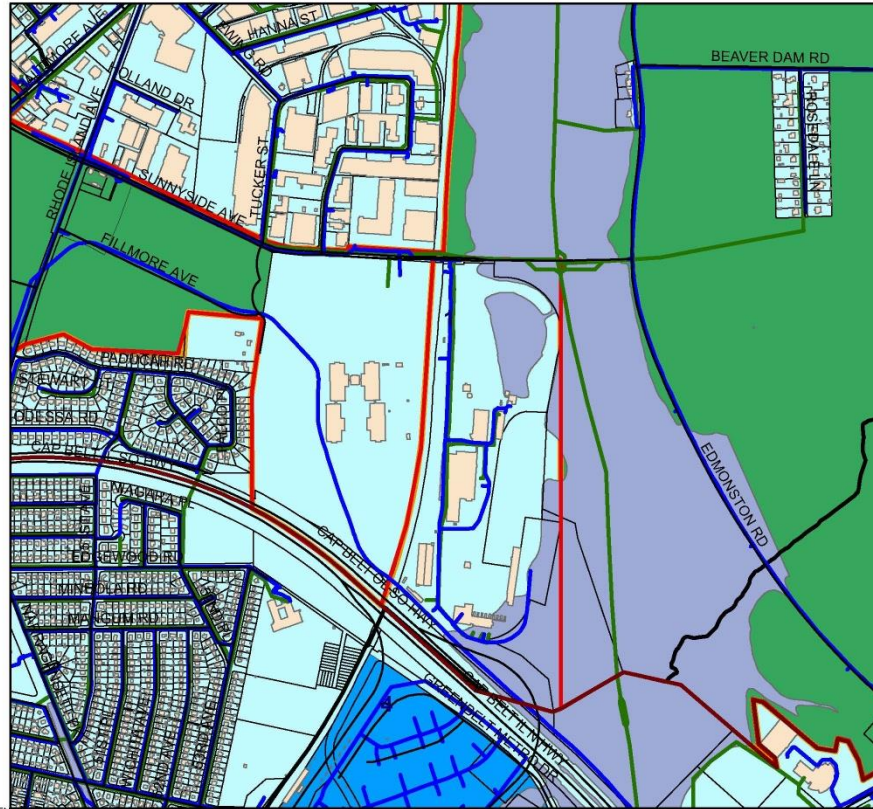
-  Beltway
-  GISDEVRDCENTERLINES
-  C_WATR_PIPE
-  C_SSWR_PIPE_GRAV
-  C_SSWR_PIPE_PRES
-  2018 Plan Proposed Envelope
-  COUNCILMANIC
-  GISDEV.PROPERTY
-  County-wide_Floodplain
-  GISDEV.CBCA_Overlay_2015_Py
-  GISDEV.GenPin_2035_Growth_Bndry_Py
-  dominantcategories

Image

- RGB**
-  Red: Band_1
 -  Green: Band_2
 -  Blue: Band_3



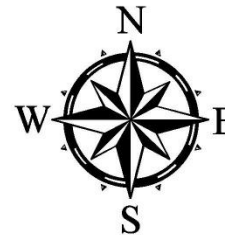
USDA - BARC WSSC Grid 213/212NE05



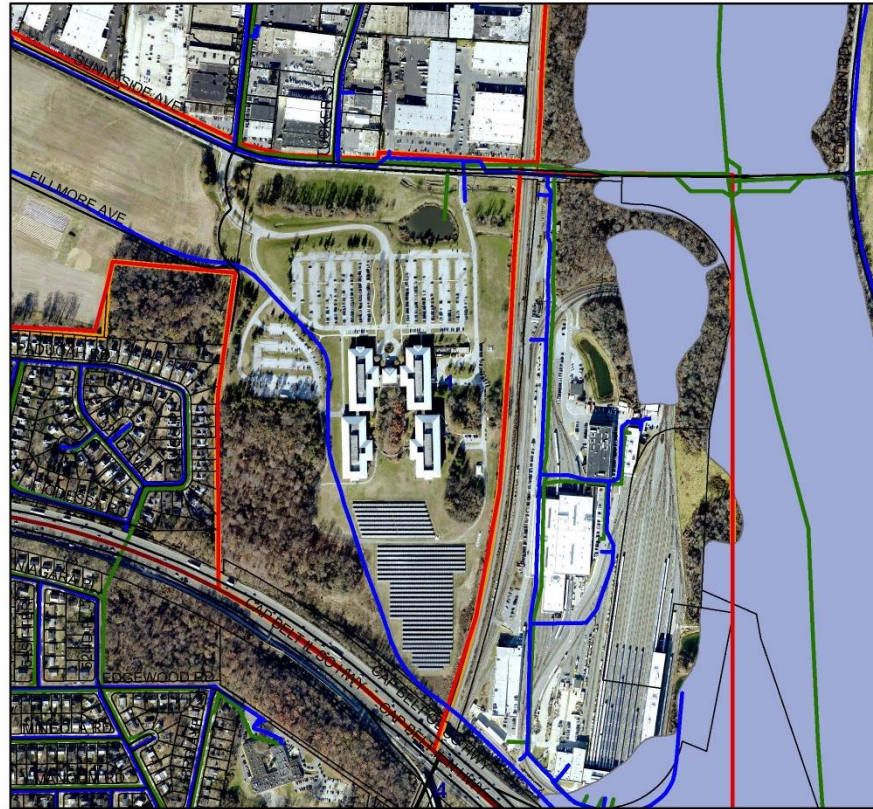
Legend

- Beltway
- GISDEVRDCENTERLINE
- C_WATR_PIPE
- C_SSWR_PIPE_GRAV
- C_SSWR_PIPE_PRES
- 2018 Plan Proposed Envelope
- COUNCILMANIC
- GISDEVBUILDINGS_NoRepres
- GISDEV.PROPERTY
- County-wide_Floodplain
- GISDEV.CBCA_Overlay_2015_Py
- GISDEV.GenPln_2035_Growth_Bndry_Py
- ♦ domantcategories

- S-3 Community System
- S-4 Community System Adequate for Development Planning
- S-5 Future Community System
- S-6 Individual System
- S-6P Private, Shared or Community System
- W-3 Community System
- W-4 Community System Adequate for Development Planning
- W-5 Future Community System
- W-6 Individual System
- W-6P Private, Shared or Community System



USDA - BARC
WSSC Grid 213/212NE05



Legend

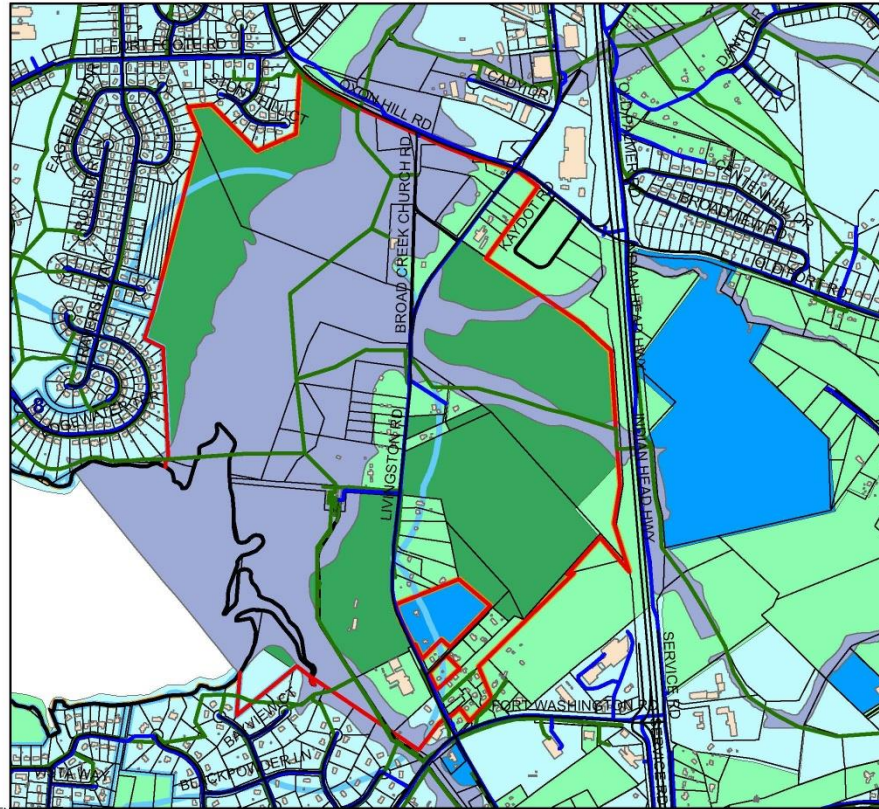
-  Beltway
-  GISDEVRDCENTERLINES
-  C_WATR_PIPE
-  C_SSWR_PIPE_GRAV
-  C_SSWR_PIPE_PRES
-  2018 Plan Proposed Envelope
-  COUNCILMANIC
-  GISDEV.PROPERTY
-  County-wide_Floodplain
-  GISDEV.CBCA_Overlay_2015_Py
-  GISDEV.GenPln_2035_Growth_Bndry_Py
-  domantcategories

Image

- RGB
-  Red: Band_1
 -  Green: Band_2
 -  Blue: Band_3



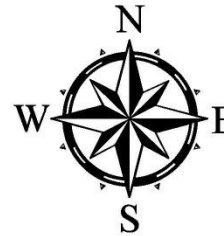
Broad Creek Areas WSSC Grid 213/214SE01



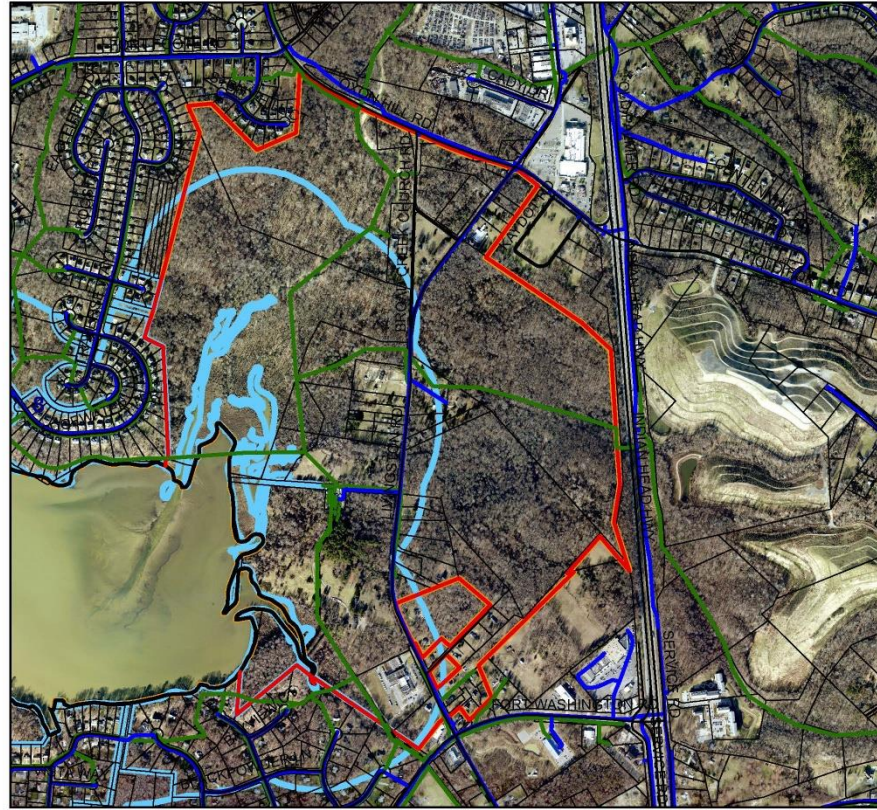
Legend

-  Beltway
-  GISDEVRDCENTERLINES
-  C_WATR_PIPE
-  C_SSWR_PIPE_GRAV
-  C_SSWR_PIPE_PRES
-  2018 Plan Proposed Envelope
-  COUNCILMANIC
-  GISDEVBUILDINGS_NoRepres
-  GISDEV.PROPERTY
-  County-wide_Floodplain
-  GISDEV.CBCA_Overlay_2015_Py
-  GISDEV.GenPln_2035_Growth_Bndry_Py
-  domantcategories











-  S-3 Community System
-  S-4 Community System Adequate for Development Planning
-  S-5 Future Community System
-  S-6 Individual System
-  S-6P Private, Shared or Community System
-  W-3 Community System
-  W-4 Community System Adequate for Development Planning
-  W-5 Future Community System
-  W-6 Individual System
-  W-6P Private, Shared or Community System




Broad Creek Areas WSSC Grid 213/214SE01



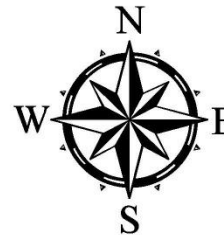
Legend

-  Beltway
-  GISDEVRDCENTERLINES
-  C_WATR_PIPE
-  C_SSWR_PIPE_GRAV
-  C_SSWR_PIPE_PRES
-  2018 Plan Proposed Envelope
-  COUNCILMANIC
-  GISDEV.PROPERTY
-  GISDEV.CBCA_Overlay_2015_Py
-  GISDEV.GenPin_2035_Growth_Bndry_Py

 domantcategories

Image

- RGB**
-  Red: Band_1
 -  Green: Band_2
 -  Blue: Band_3





ADOPTION
OF THE
2018 WATER AND SEWER PLAN