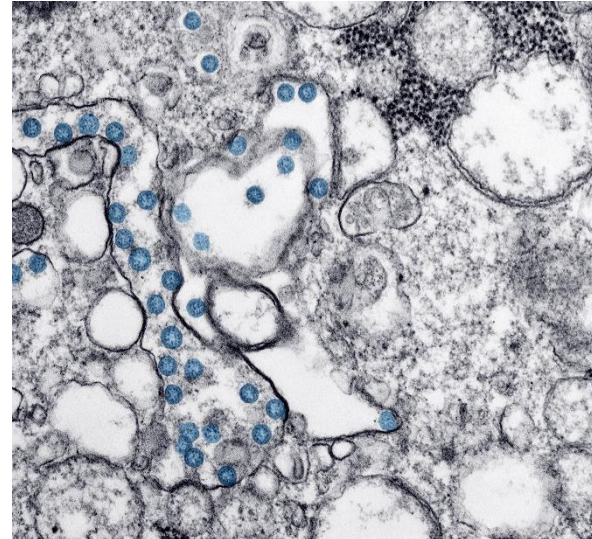
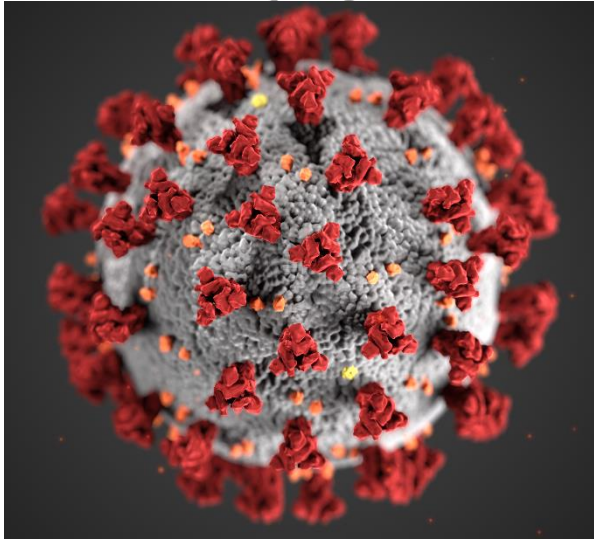


Prince George's County COVID-19/Health Department Update



January 18, 2022

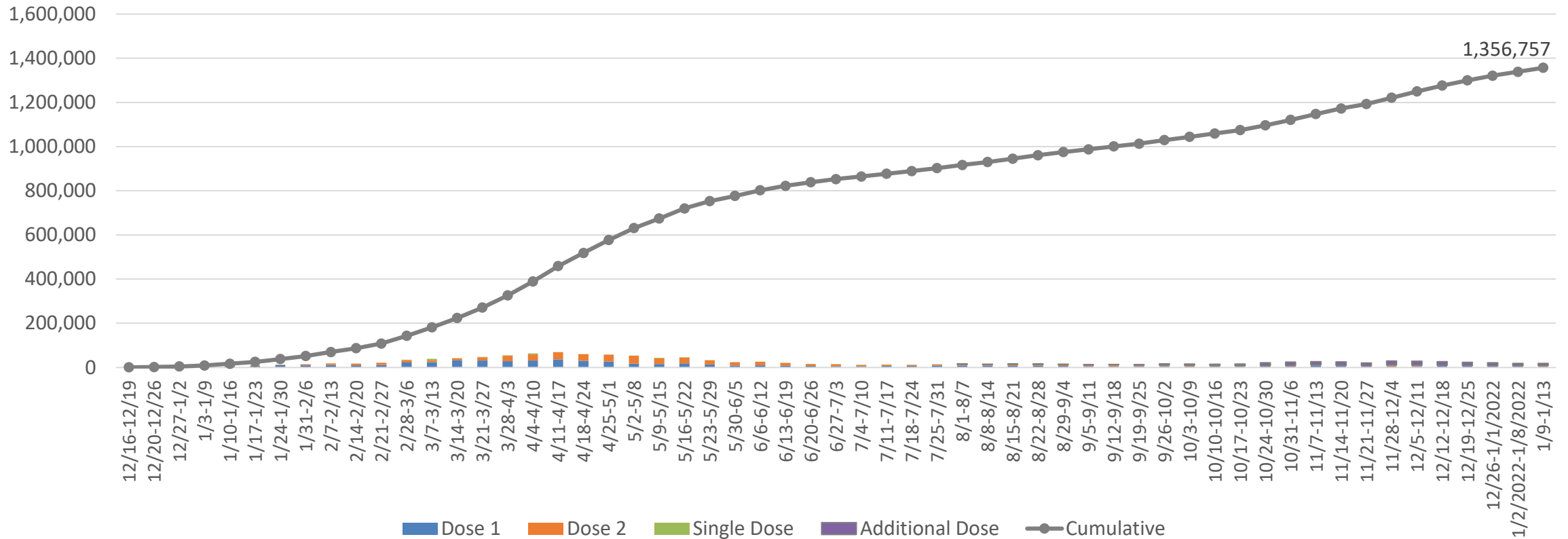
Data is updated daily and subject to change. For the latest information please visit our [COVID-19 Dashboard](#).

COVID -19 Status Report

Vaccinations by Date Received for Residents

Over 1.3 million vaccinations have been provided to 631,979 residents by Maryland providers (including 522,162 second doses and 205,761 additional doses); an additional 34,980 residents have received vaccinations from providers in D.C. Overall 78.3% of county residents ages 5 and over have received at least one vaccine from Maryland and D.C. providers.

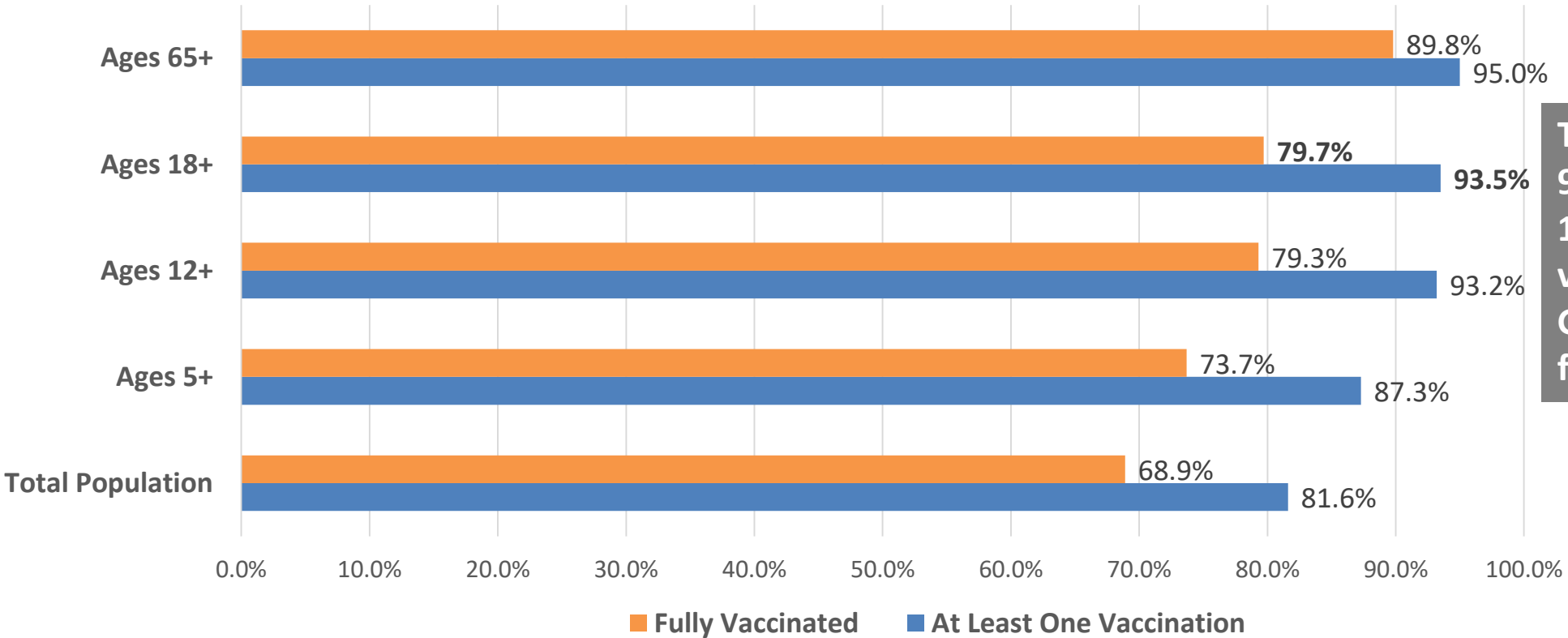
Prince George's Resident COVID Vaccinations by Maryland Providers



Data as of 1/13/22

Resident Vaccinations: CDC Reported Vaccinations

The Centers for Disease Control and Prevention (CDC) provides data that includes vaccinations provided by federal entities including the VA, for example. It is important to consider this information to help provide a fuller picture for vaccinations in Prince George’s County. **According to the CDC, 69% of the county’s total population is fully vaccinated and more than four out of every five residents have received at least one vaccination.**



The CDC is reporting 93.5% of adults ages 18 with at least one vaccination in Prince George’s and 79.7% as fully vaccinated

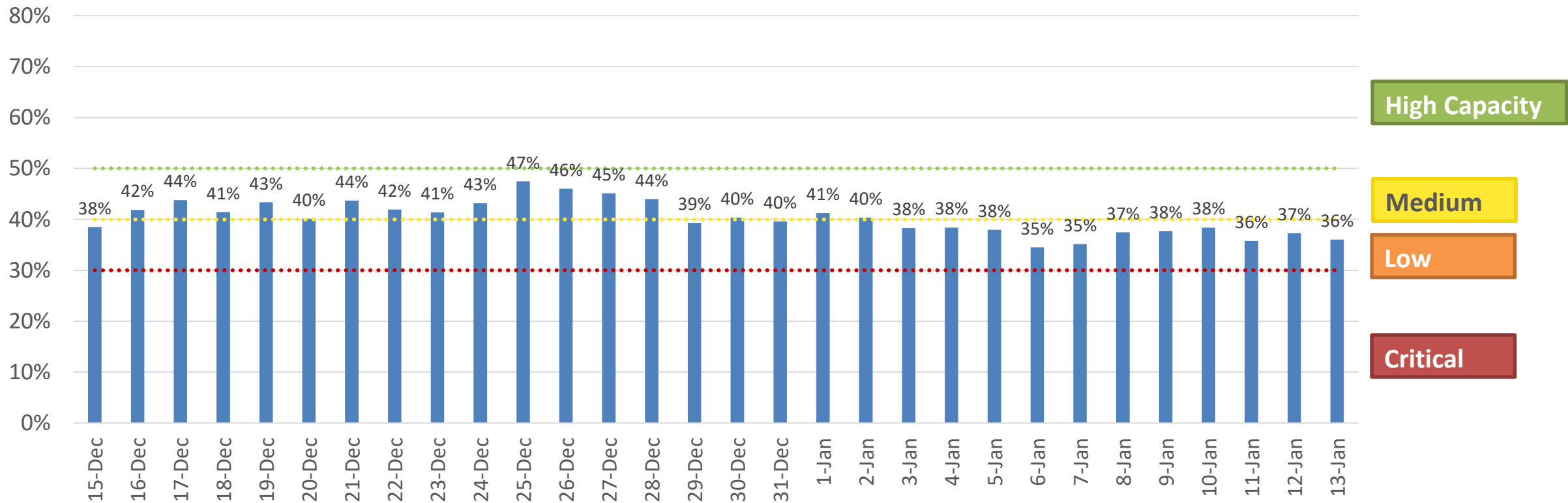
Accessed 1/17/2022: <https://covid.cdc.gov/covid-data-tracker>



Healthcare System Available Capacity

There are a total of 982 hospital beds within the county (including surge beds). Our current available capacity is around 36% while 28% of beds are in use for other issues and 36% are in use for patients with COVID-19.

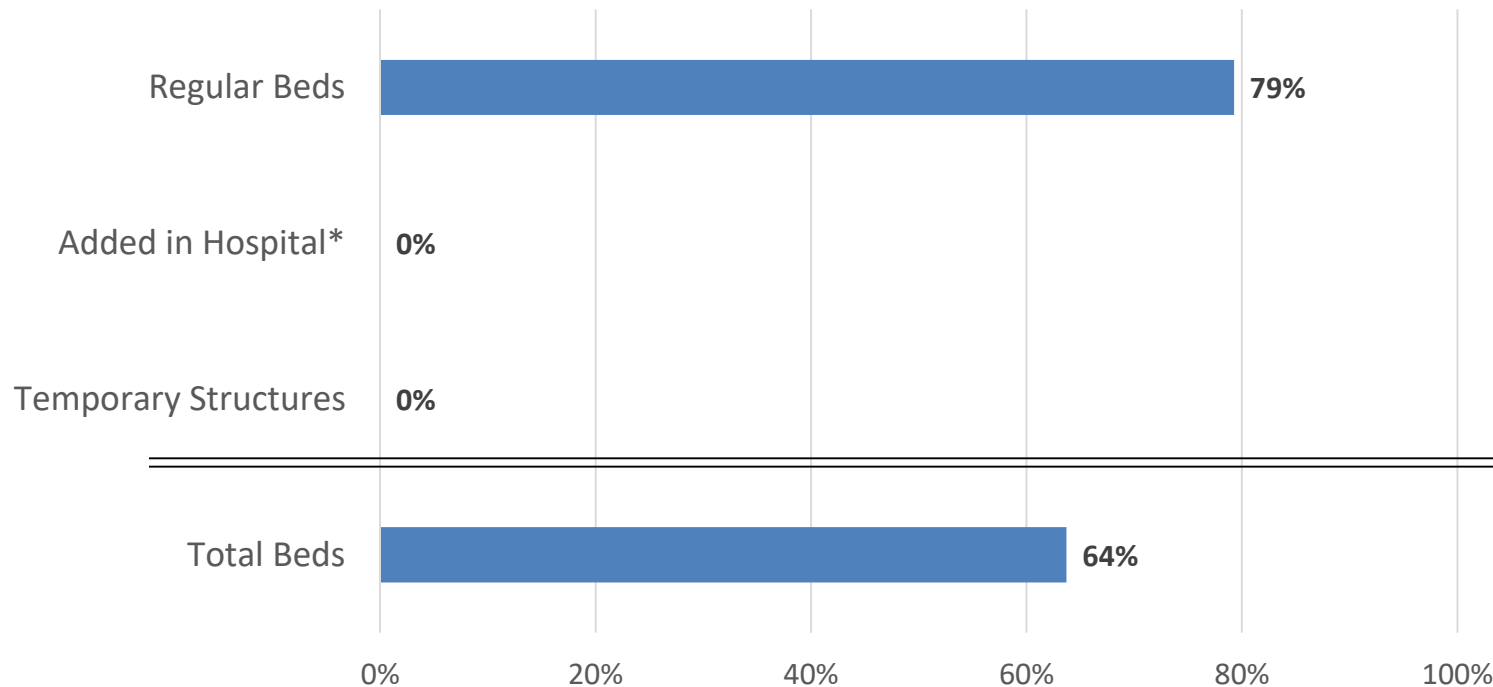
Available Hospital Capacity



Healthcare System Capacity: Med/Surgery Beds

Currently, 79% of the 656 regular acute care beds in the county are in use. **Of the total acute care beds in use about 50% are patients with COVID-19.** There has only been limited use of additional acute care surge space this year.

Percent of Med/Surgery Beds In Use for PGC Hospitals



Utilization as of 1/13/22

Number of Med/Surg Beds

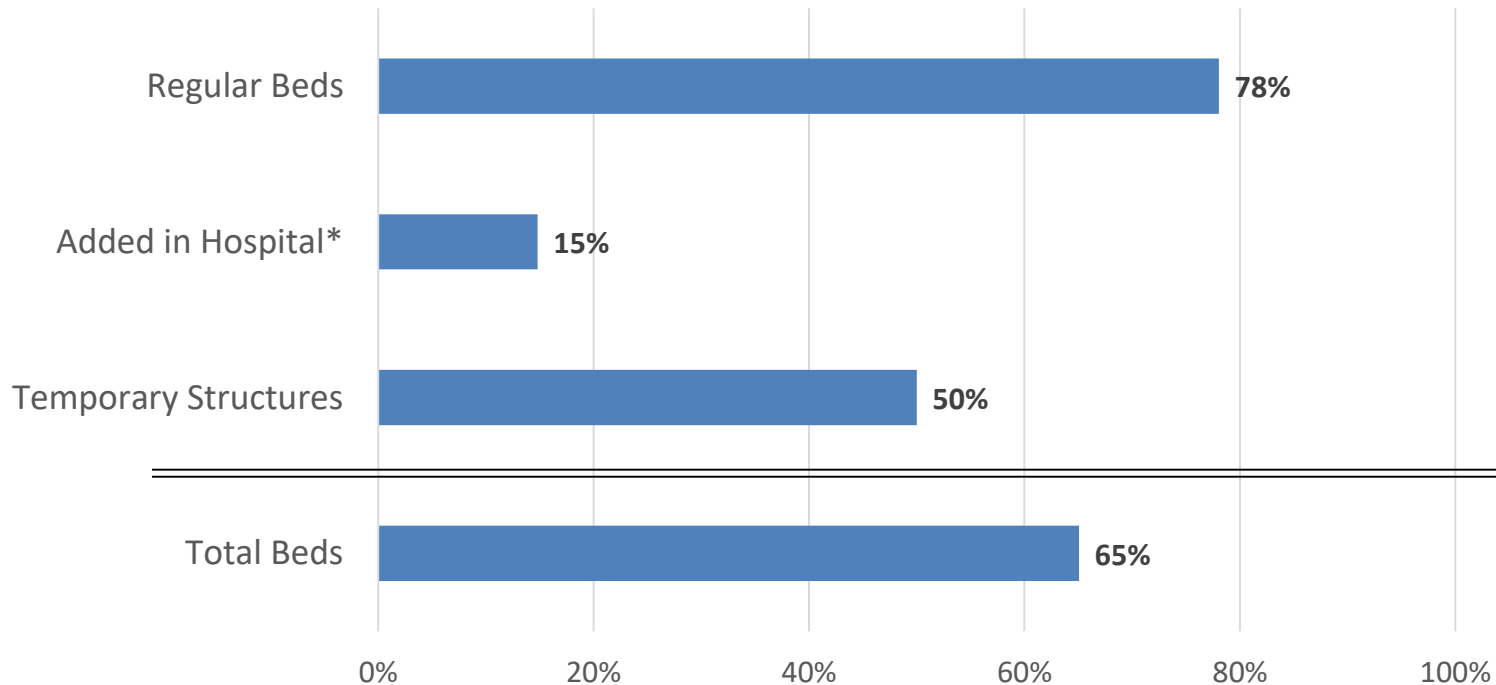
	Total Number	Number Used
Regular Beds	656	520
Added in Hospital*	80	0
Temporary Structures	80	0
Total Beds	816	520

* Hospitals may use additional spaces to better cohort and serve patients; counts of use of within hospital additions are based on exceeding licensed beds and may not reflect flexible patient management.

Healthcare System Capacity: ICU Beds

Currently, 78% of the 123 regular ICU beds in the county are in use. **Of the total ICU beds in use 81% are patients with COVID-19.** One hospital is using their ICU pods as part of their routine bed space (Adventist HealthCare Fort Washington Medical Center); there has been only limited use of within hospital surge space.

Percent of ICU Beds In Use for PGC Hospitals



Utilization as of 1/13/22

Number of ICU Beds

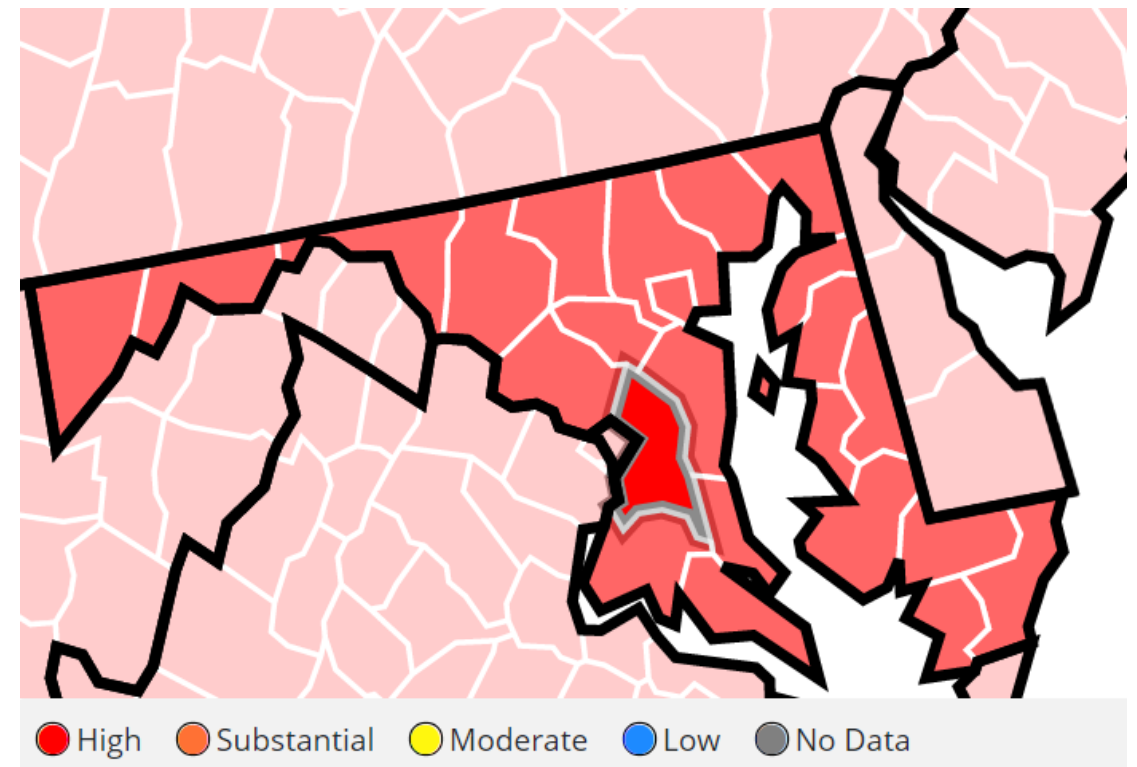
	Total Number	Number Used
Regular Beds	123	96
Added in Hospital*	27	4
Temporary Structures	16	8
Total Beds	166	108

* Hospitals may use additional spaces to better cohort and serve patients; counts of use of within hospital additions are based on exceeding licensed beds and may not reflect flexible patient management.

CDC Community Transmission Report

The CDC has designated metrics for monitoring community transmission level across the country. **Prince George's and all other jurisdictions in Maryland are reported as having "high" community transmission.** Due to a system outage at the Maryland Department of Health, Prince George's local updates are delayed.

	CDC 7-day Metrics: Prince George's County	CDC Transmission Level
New Cases per 100,000 persons in the past seven days (cumulative)	1,428.64 (1/6/22-1/12/22)	High (100.0+)
Percentage of positive tests in the past seven days	32.66%* (1/4/22-1/10/22)	High (10.0+)



*Data as of 1/13/22

Local data updates are delayed due to a system outage at MDH; Data reported from: <https://covid.cdc.gov/covid-data-tracker>; [CDC transmission levels](#) accessed 1/14/2022

Key Metrics

Risk Level and Reopening Phase	Percent of Positive Tests	Infection Rate	Average Daily Case Rate per 100,000 population	Available Hospital Capacity
Low (Phase 3)	0-3%	<0.9	1-5	>49.9%
Medium (Phase 2)	3.1%-5%	0.9-1.10	5-10	40-49.9%
High (Phase 1)	5.1%-10%	1.10-1.39	10-25	30-39.9%
Critical (Closed)	>10%	>1.39	>25	<30%
1/14/21	32.66%* (as of 1/13)	Unavailable	204.09*	36.0% (as of 1/13)

* CDC data reported from <https://covid.cdc.gov/covid-data-tracker>; local updates are delayed due a system outage at the Maryland Department of Health. Data as of 1/17/2022

Update on Foundational Infrastructure

Staffing Challenges

- Continuous need for temporary staffing to fill gaps and meet operational needs (COVID and Departmental)
- Vacancies and attrition significantly impact operations (also COVID transmission); and
- The major concern is the potential for disruption in services and/or not having the workforce to provide residents high-quality services



Improving Foundational Infrastructure (HD Strong)

- The Health Department continues to focus on building the foundational infrastructure that will allow us to more efficiently execute our mission.
 - Recruiting a programmatic Deputy Health Officer
 - Continue to work on developing a standard indirect cost rate
 - Developing tracking and data visualization tools – *In Process*
 - Developing a comprehensive plan to improve staffing levels, streamline administrative business processes, and increase resource stability -*In Process*

Update on Information Technology Infrastructure

Information Technology Update

- Public Health Information Network (PHIN)
 - In Expansion Period
 - Connecting to providers and other stakeholders to assist in care coordination and population health management
 - Integrating into new federal and state grants related to care coordination and population health management
 - Incorporating into our internal Health Department programs (ACCU, ACIS, HIV, Maternal Child Health, etc.)
 - Expansion of population health platforms to enhance referrals and Community Health Worker workflows (ex. PreventionLink/Diabetes and Hypertension)
- EPIC
 - Stabilization (Trouble Shooting) Period
 - Orientation of additional EPIC applications (ex. Healthy Planet)
- Internal IT Audit Strategy Development – *In Process*

Highlights

Current/New Projects

- State-wide Integrated Health Improvement Strategy (SIHIS)
- Developing County-wide Community Health Worker Standards and Workflows
- Health Literacy (COVID Focus)
- Health in All Policy Planning
- Expansion of Health Assures Program/Strengthening of FQHC Partnership
- Expansion of School-Based Wellness Program

Accomplishments - Behavioral Health Services

- Commission on Accreditation of Rehabilitation Facilities (CARF) accreditation for Jail-Based Substance Abuse Treatment Program
- Joint Commission Accreditation for the Methadone Clinic
- Successful System of Care Behavioral Health Campaign for Transitional-Aged Youth
- Collaboration w/ TLC for Approx. \$23M HSCRC Grant for Expanding Behavioral Health Crisis Continuum in the County
- Stabilization of leadership within division and Local Behavioral Health Authority
- Dr. Shaw/Medical Director – Graduated from Johns Hopkins Bloomsberg School of Public Health – Fostering Collaboration w/ the School through the Bloomsberg American Health Initiative
- Provided Naloxone Training and Train the Trainer Training for Office of Sheriff and Prince George's Police Department with goal of training the entire force

Accomplishments – Environmental Health Services

- Conducted COVID compliance complaint inspections
- Conducted contact tracing for COVID (Communicable and Vector-borne Disease Control –CVDC) and continued to conduct routine surveillance and investigation activities
 - Food-borne, water-borne, vector-borne, rabies, and other communicable diseases
- Continued to provide routine inspections and enforcement services (food, temporary/event and single-day, pools, percolation tests for septic systems)
- Provided home visits for children with elevated blood lead levels and asthma, provide case management, nursing and environmental risk assessments
- Served on Climate Action Commission
- Served on the Bi-County Infrastructure Working Group for Sewer Line Extensions for Unserved and Underserved Neighborhoods

Accomplishments - Family Health Services

- Retention of Senior Staff
- Transition of Healthy Teens to a Pediatric Practice (Solution for Suspension of SBWCs Due to School Closures during Pandemic)
- Continuation and Expansion of Ending the HIV Epidemic Campaign (Channel 9 and Radio One, expanding into bus ads and adding bilingual component for targeted areas)
- Working w/ PGCPS for expansion of Community Health Clinics
- NASA COVID Breathalyzer Project – Testing Phase
- Began Strategic Planning for Maternal Child Health Expansion in the County
- Diane Young accepted into DrPH Program at GW in Maternal Health Resulting Expansion of GW/HD Partnership

Accomplishments Health and Wellness

- Provided TA to PreventionLink medical providers on how to provide telehealth services
- Highlighted in a national CDC marketing publication for the innovation of the county's DPP programs
- Served 275 high risk maternal women and girls in the county experiencing multiple social determinants of health with an evidence-based care coordination model delivered by CHWs.
- Served over 75 of the county's homeless residents, who are high system utilizers experiencing multiple chronic health issues with housing services and intensive care management (ACIS)
- Provided care coordination services to address the needs of 4,473 unduplicated residents
- Strengthened infection prevention and control for 10 nursing homes and 26 dialysis centers in high-risk facilities in the County
- Worked with consultant group to develop tools to assist independently owned corner stores and markets to increase the amount of healthier food items available in Healthy Food Priority Areas
- Provided 47,328 medical transportation trips for low-income residents

Accomplishments – Office of the Health Officer & Administration

- Awarded \$6M (2-yr) Grant for Health Literacy by HRSA and \$12M (3-yr) Grant by CDC for Community Health Worker Expansion
- Awarded PGCPS Foundation's Excellence Award for COVID Response
- Implementation of New Electronic Health Record (EHR), EPIC, during pandemic
- Completed Food Priority Area Mapping
- Provided fiscal (budget management, procurement and contract) support for county's COVID response
- Successfully completed 7-yr state audit during pandemic

Questions?
