

Appendix A – Meetings and Outreach

Meetings Contents:

Prince George's County – Laurel, MD Multi-Jurisdictional HMP Update Kick-Off Meeting 12-2-16 Presentation

Prince George's County – Laurel, MD Multi-Jurisdictional HMP Update Kick-Off Meeting 12-2-16 Sign-In Sheet

Prince George's County-Laurel, MD Multi-Jurisdictional HMP Update HIRA Results Meeting 3-10-2017 Presentation

Prince George's County-Laurel, MD Multi-Jurisdictional HMP Update HIRA Results Meeting 3-10-2017 Sign-In Sheet

LEPC Roster

Outreach Contents:

Capital Heights Roundtable Agenda

Capital Heights Roundtable Sign-In Sheet

Capital Heights Day Photos

Proclamation of "Flood Awareness Month"

Prince George's County Hazard Mitigation Plan Draft – Public Review Link

Prince George's County Municipal Floodplain Management Workshop Agenda

Prince George's County Local Emergency Planning Committee Quarterly Meeting Minutes

Prince George's County Office of Emergency Management Facebook and Twitter Outreach posts

Prince George's County, MD Hazard Mitigation Plan - Draft for Public Comment

Prince George's County – Laurel MD Multi-Jurisdictional Hazard Mitigation Plan Update

KICK-OFF MEETING

DECEMBER 2, 2016

Prince George's County
and
The City of Laurel
Maryland

Hazard Mitigation Plan



2010 Update

Agenda

1. Welcome & Introductions
2. Schedule and Plan Update Process
3. Hazard Prioritization
4. Data Needs
5. Committee Member Responsibilities
6. MAC HMP Update Aspirations
7. Next Steps
8. Wrap Up & Future Meetings

Introductions

- ▶ Name
- ▶ Department/Role

Hazard Mitigation Plan Update

► Project Scope:

Update the *Prince Georges County – City of Laurel 2010 Hazard Mitigation Plan* to remain compliant with Maryland Emergency Management Agency and FEMA requirements

Prince George's County, City of Laurel and Dewberry

Committee members need to: ensure that this is your plan through MAC engagement with Prince George's County and Laurel OEM and Dewberry

- ▶ Critical facilities update to Dewberry
- ▶ Capacity assessment survey and 2010 mitigation actions update to Dewberry
- ▶ 2017 new mitigation actions (in-person meetings/calls)
- ▶ Support draft review and outreach
- ▶ **Participate & make the final decisions**

Prince George's County OEM, MAC and Dewberry

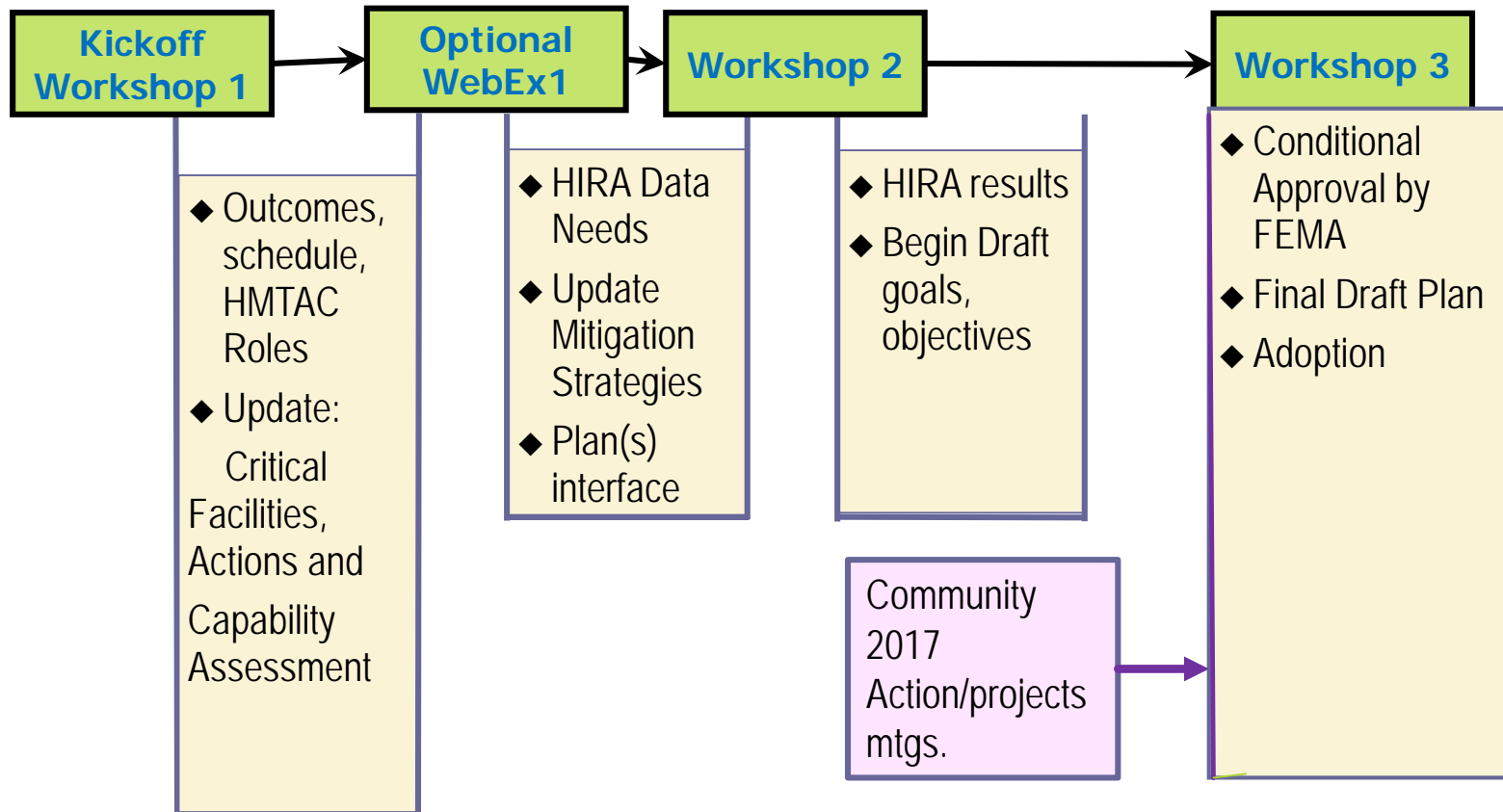
- ▶ Prince George's County OEM team is here to:
 - ▶ Assist departments with new plan actions
 - ▶ Coordinate Public Outreach and participation (social media emphasis)
 - ▶ Facilitate communication and project scheduling/reporting with Maryland Emergency Management Agency and Dewberry

Mitigation Action Committee and Dewberry

- ▶ Dewberry is here to:
 - ▶ Lend technical expertise and consultation
 - ▶ Partner with PG County and Laurel staff and local government staff to update all required sections of the plan
 - ▶ Prepare and crosswalk the draft and final plan sections

We will do the heavy lifting to assure you receive a compliant, relatable plan that positions your region and community to become more resilient.

Project Approach: Planning Process



Schedule

Task	Dec	Jan	Feb	Mar	April	May	June	Jul
Kick-off Meeting	1							
HIRA Update/Development				2				
Capability Assessment								
Draft Plan/ Mitigation Strategies				✿				
Final Meeting & Implementation Kick-off						3		
MEMA/FEMA Review				★		★	★	
Plan Submittal/Adoption Support/Close Out								

1 – 3

MAC Workshops – HIRA Results/Mitigation workshop



Department on-site/call Mitigation Strategies Meetings/WebEx



Draft Plan review submittal and meeting with MEMA if needed

Mime Cast Large File Submittal

FW: HIRA link via mimecast - Message (HTML)

FILE MESSAGE MIMECAST

Ignore Delete Reply Reply All Forward More Meeting

404-406 Mitigat... To Manager

Team Email Done

Reply & Delete Create New

Move OneNote Actions


Mark Unread Categorize Follow Up

Translate Select Zoom

Find Related Select Zoom

Delete Respond Quick Steps Move Tags Editing Zoom

Wed 11/30/2016 11:32 AM

 Jackie Stewart <jstewart@richmondregional.org>

FW: HIRA link via mimecast

To: Mills, Deborah

Click here to download pictures. To help protect your privacy, Outlook prevented automatic download of some pictures in this message.

This message originated from outside your organization

[Jackie S. Stewart](#), AICP | Richmond Regional PDC – Administration – Manager, Special Projects | 9211 Forest Hill Ave., Suite 200, Richmond, VA 23235 | w. 804-323-2033 | c. 804-380-8301 | f. 804-323-2025 | www.richmondregional.org

From: sduncan@dewberry.com [<mailto:sduncan@dewberry.com>]
Sent: Friday, November 18, 2016 10:08 AM
To: Jackie Stewart <jstewart@richmondregional.org>
Subject: HIRA link via mimecast

Large File Send
Invitation to Access Shared Files

Duncan, Stephen (sduncan@dewberry.com) has shared files with you using Mimecast Large

Click a photo to see recent emails and social updates.



Jackie S. Stewart AICP Aol account User id...
Director of Planning an... Associate; Emergency ...

Why does hazard mitigation matter?

Hazard Mitigation

...is a sustainable action that will reduce or eliminate injury to citizens, damages to structures and allow continuity of critical society functions...

Resiliency Definition

...capacity to maintain/regain functionality & vitality from natural, climate-induced, or man-made stressors and disturbances. Resiliency strategies can provide communities with tools for bouncing back more quickly from extreme weather or other high-impact events.

Resiliency planning provides communities with the ability to adapt and thrive despite changing environmental, social, and economic conditions.

BREAK - Hazard Rankings

Hazard Type	2010 HMP Planning Consideration Level	2017 PG County – City of Laurel Update MAC Kick-off Meeting
Natural		
Winter Storms	Medium - High	High
Flooding (river, stream, coast)	High	High
Wind (including Hurricanes, Thunderstorms)	Medium - High	Medium
Drought	Medium - High	Low
Wildland Fire (brush, forest)	Medium	Low
Tornado	N/A	Combined w/wind
Earthquake	N/A	Low
Land Movement	Medium - High	Low
Stream bank Erosion	Medium - High	Low
Extreme heat/cold	Heat - medium	Low
Human-Caused		
Dams (Impoundment Failure)	Medium - High	High

HIRA Update

- ▶ What natural hazard events have occurred since 2010?
- ▶ What specific vulnerabilities exist in the County and City that may not have been captured in the previous plan?
- ▶ Please provide any updates to areas of concern noted in HIRA narrative.

Critical Facilities

- ▶ Critical facilities include public safety, buildings used for sheltering, schools, health care (hospitals and long-term care), correctional facilities, utilities and other vital to community continuity of services after a disaster.
- ▶ MPO can be added to this list – transportation, drainage, etc.
- ▶ Existing list will be emailed next week. Please review and provide deletions/modifications/additions by August 19, 2016.

Capability Assessment

- ▶ We will update information provided in tables and text in Hazard Identification, Risk Assessment and Vulnerability (HIRA) Chapter
- ▶ Develop a master table for summary program/plan initiative data customized to 2010 HMP actions included in the Appendix.
- ▶ We will reach out to you with specifics for your Department in December.
- ▶ Target completion late-January.

Mitigation Actions Status

- ▶ ID completed, deleted, or deferred actions or activities from the 2010 plan as a benchmark for progress.
- ▶ Existing list will be distributed during December.
- ▶ Please review and provide deletions/modifications/additions by January 16, 2017 to Jillian Browning jbrowning@dewberry.com copied to Deborah Mills at dmills@dewberry.com.

Public Involvement in Plan Update

- ▶ Document how the community was kept involved during the plan maintenance process over the previous five years.
 - ▶ What has been done since 2011?

MAC Hazard Mitigation Plan Update Aspirations

- ▶ What keeps you up at night?
- ▶ What do you like about current plan?
- ▶ To enable cross-cutting mitigation themes and actions/projects are the necessary people/departments ready to participate?
- ▶ Are there other efforts currently going on in your community that we should be aware of?
- ▶ What would some positive outcomes be?
- ▶ What information/expertise can you contribute?

What's Next?

- ▶ Data gathering for HIRA (MEMA, PG and Laurel staff and Dewberry)
- ▶ Data gathering for Capability Assessment
- ▶ Initiation of Public Outreach
- ▶ Reporting and updates to 2011 Plan Accomplishments
- ▶ Vulnerability analysis Update and Kick-off for Goals, Objectives and Mitigation actions Workshop (early March)

Questions, Comments, Discussion

Deborah G. Mills, C.F.M.

Associate

Dewberry

804.335.9946

dmills@dewberry.com

MEETING SIGN-IN SHEET

Project: Prince George's County – City of Laurel

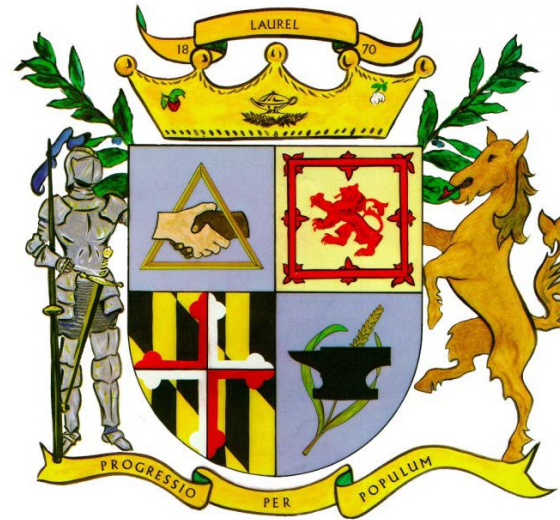
Meeting Date:

Purpose: Project Kick-off

December 2, 2016

Name	Title	Agency	Phone	E-Mail
Gwen Clerkley	Associate Director	Dept of Public Works ^{Transparency}	3/499-8523	gtclerkley@co.pg.md.us
Kerry McLEAFAN	LT	PGPD	301 772 4740	KLMCFANE@CO.PG.MD.US
Jack Brock	Planning Director	City of Laurel	301-725-5300	jbrock@laurel.md.us
STEPHEN ALLEN, SR.	EMERGENCY MANAGER	CITY OF LAUREL	301-725-5300 ^{x2244}	sallen@laurel.md.us
Todd Addis	Security Manager	OIT	301-883-3351	wtaddis@co.pg.md.us
CHRIS AKINBOBOLA	SPECIAL ASST.	DOE	301-883-7157	caakinbobola@co.pg.md.us
Catherine Escarpeta	GIS Analyst	DOE	301 883 5990	crescarpeta@co.pg.md.us
Diana Jenkins ^{John}	Associate Director	DOE	301. 883. 5839	johnix@co.pg.md.us
JOE PEREZ	CAPTAIN	PGPD	202-957-8822	JRPEREZ@CO.PG.MD.US
Vernon L. Stinnett	Division Chief	DPW&T OHM SMD	301-499-8556	VLStinnett@co.pg.md.us
Debbie Tyner	Deputy Director	MNCPPC	(301) 699-2580	debbie.tyner@pgparks.com
Charles Hamby	Major	PGPD	301 583 7170	CEHAMBY@CO.PG.MD.US
William Alexander	Major	PGPD	410 310 1297	WAALEXANDER@CO.PG.MD.US
Theresa Martin	GIS Analyst	City of Laurel	301-725-5300 x2214	tmartin@laurel.md.us
Chris Akinbobola				caakinbobola@co.pg.md.us
Bill Goddard	Depty. City Admin.	City of Laurel		

Prince George's County and the City of Laurel Hazard Mitigation Plan Update Kick Off Meeting December 2, 2016 Sign-In Sheet				
Jurisdiction	Name	Position	Email	Phone
Office of Homeland Security - Office of Emergency Management	Ronald Gill	Deputy Director	regill@co.pg.md.us	(240) 619-6497
Office of Homeland Security - Office of Emergency Management	Courtney Mariette	Regional Planner	cemariette@co.pg.md.us	301-324-4453
Department of Environment	Dawn Hawkins-Nixon	Associate Director	dhnixon@co.pg.md.us	301-883-5839
Department of Environment	Chris Akinbobola	Special Assistant	caakinbobola@co.pg.md.us	301-883-7157
Department of Environment	Catherine Escarpeta	GIS Analyst	crescarpets@co.pg.md.us	301-883-5990
PGPD	Kirk McLean	LT	clmclean@co.pg.md.us	301-772-4740
PGPD	Joe Perez	Captain	jrperez@co.pg.md.us	202-957-8822
PGPD	Charles Hamby	Major	cehamby@co.pg.md.us	301-583-7170
PGPD	William Alexander	Major	waalexander@co.pg.md.us	410-310-1297
Department of Public Works and Transportation	Gwen Clerkley	Associate Director	gtclerkley@co.pg.md.us	301-499-8523
Department of Public Works and Transportation	Vernon L. Stinnett	Division Chief	vlstinnett@co.pg.md.us	301-499-8556
Office of Information Tech.	Todd Addis	Security Manager	wtaddis@co.pg.md.us	301-883-3351
MNCCPPC	Debbie Tyner	Deputy Director	debbie.tyner@pgparks.com	301-699-8556
City of Laurel	Jack Brock	Planning Direcor	jbrock@laurel.md.us	301-725-5300
City of Laurel	Stephen Allen, Sr.	Emergency Manager	sallen@laurel.md.us	301-725-5300, ext. 2246
City of Laurel	Theresa Martin	GIS Analyst	tmartin@laurel.md.us	301-725-5300, ext. 2214
City of Laurel	Bill Goddard	Deputy City Administrator	-	-



Prince George's County & City of Laurel, Maryland **Hazard Mitigation Plan Update** Hazard Identification and Risk Assessment

Results Meeting
March 10, 2017

Agenda

- 1. Welcome**
- 2. Project Schedule**
- 3. Risk Assessment**
- 4. Mitigation Goal Refresh and Strategies**
- 5. County and Laurel Mitigation Action Update**
- 6. Outreach Brainstorming**
- 7. Potential Project evaluation - May**
- 8. Next Steps**

Schedule

Task	Dec	Jan	Feb	Mar	Apr	May	Jun- Oct	Jan
Kick-off Meeting	1							
HIRA Update/Development				2				
Capability Assessment								
Draft Plan/ Mitigation Strategies					✿			
Resiliency Integration & Implementation Kick-off							3	
VDEM/FEMA Review						★	★	
Plan Submittal/Adoption Support								

1 – 3

HMTAC Workshops – HIRA Results/Mitigation Goals/Implementation workshop/Resiliency Incorporation



Local on-site Mitigation Strategies Meetings/WebEx



Draft Plan review session with VDEM/ RR and Crater PDC if needed

Major HIRA Components

Identify and profile hazards affecting the region:

Vulnerability to critical facilities and estimate losses

Vulnerability for current and future land use and development



Plan Update Requirements

- **Hazard Identification and Risk Assessment**

- Describe all hazards that affect the region; rationale for omitting recognized hazards from analysis
 - Hazard Profiles
 - Location
 - Extent
 - Previous occurrences
 - Probability of future events
- Vulnerability Assessment
 - Summary of the County and City's vulnerability to each hazard
 - Summary of potential hazard impacts

2017 Plan Update Changes

New analyses and updates: Updated each hazard profile

- Hazard profile
- NCDC storm events data
- 2010 – present storm/disaster occurrences
- Summary risk by jurisdiction using new data

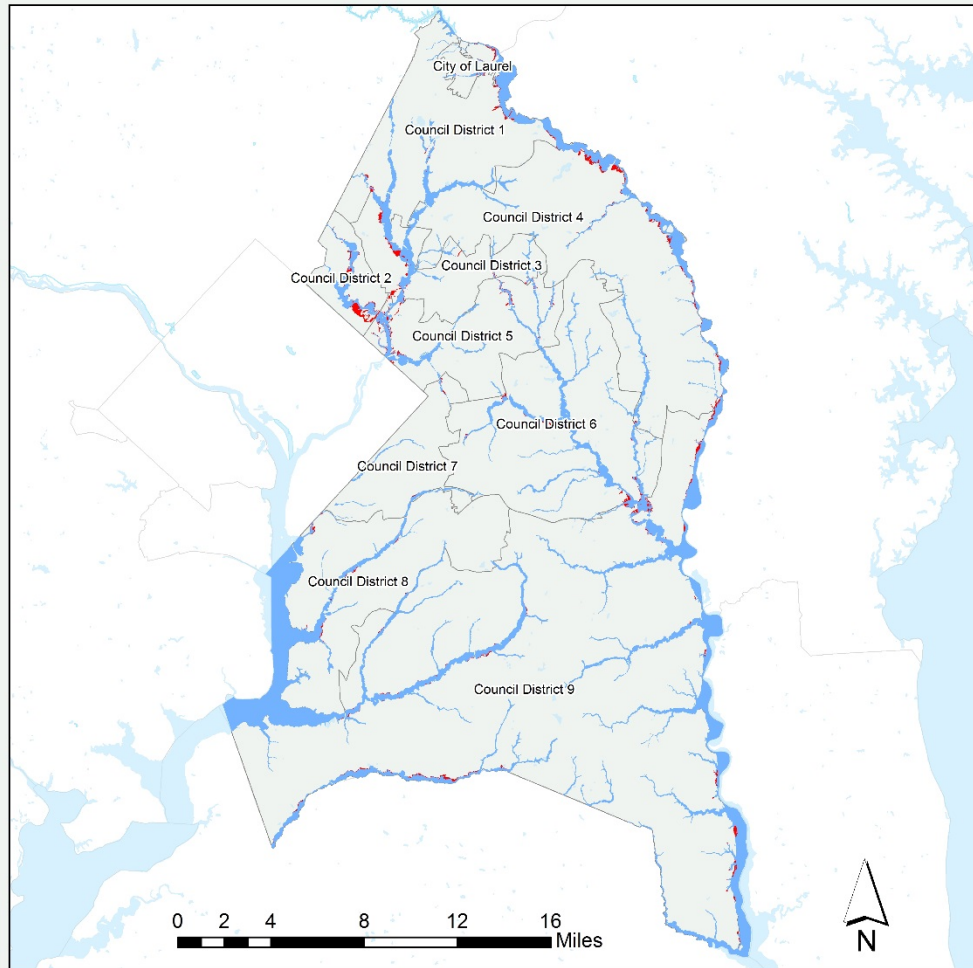
New maps based on updated data

- HIRA summary that includes overall relative risk and critical facility risk comparison by hazard.



Riverine Flooding

100/500 YEAR FLOODPLAINS FOR FRINCE GEORGE'S COUNTY



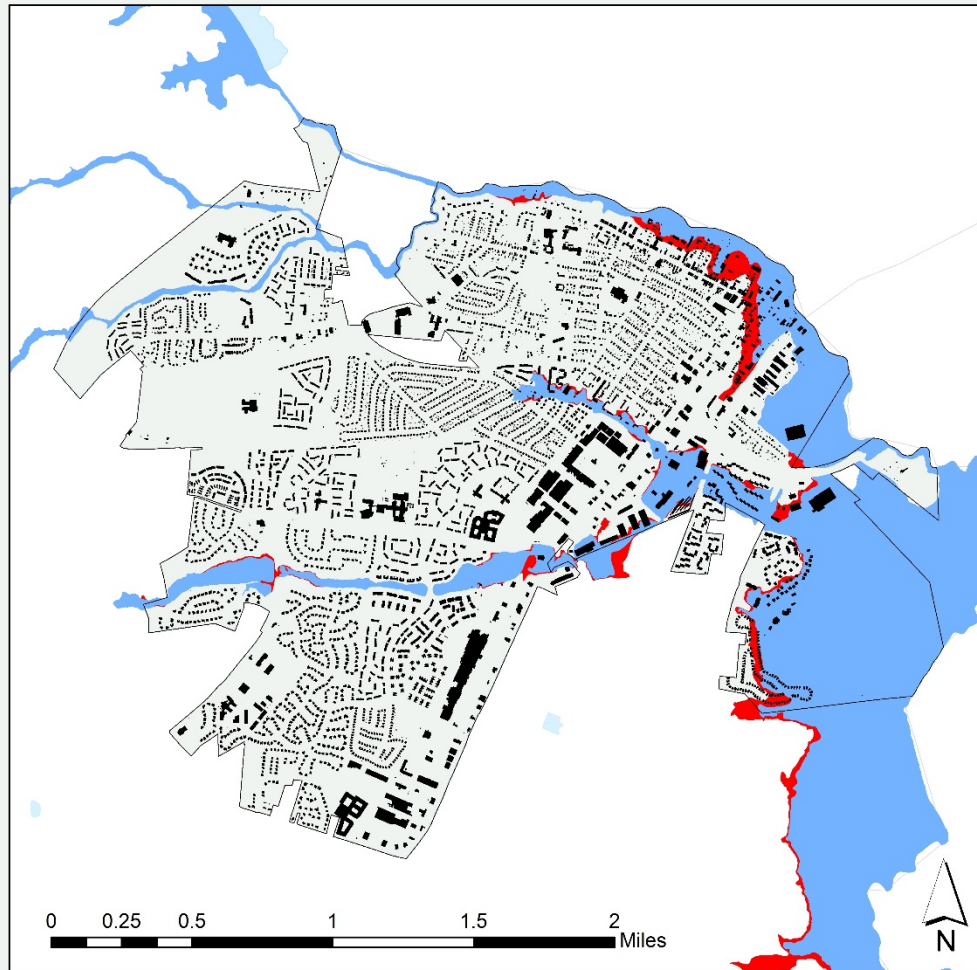
Floodplain Boundaries

- 100 Year Flood
- 500 Year Flood

Floodplain boundaries for 100-year-flood and 500-year-flood by Council Districts in Prince George's County and the City of Laurel.



100/500 YEAR FLOODPLAIN FOR THE CITY OF LAUREL



Floodplain Boundaries

-  100 Year Flood
-  500 Year Flood

Floodplain boundaries for 100-year-flood and 500-year-flood in the City of Laurel.



FEMA NFIP Participation Dates

Jurisdiction	Initial FHBM Identified	Initial FIRM Identified	Current Effective Map Date
City of Laurel	9 Aug 1974	1 Nov 1978	16 Sep 2016
Prince Georges County	N/A	4 Aug 1972	16 Sep 2016

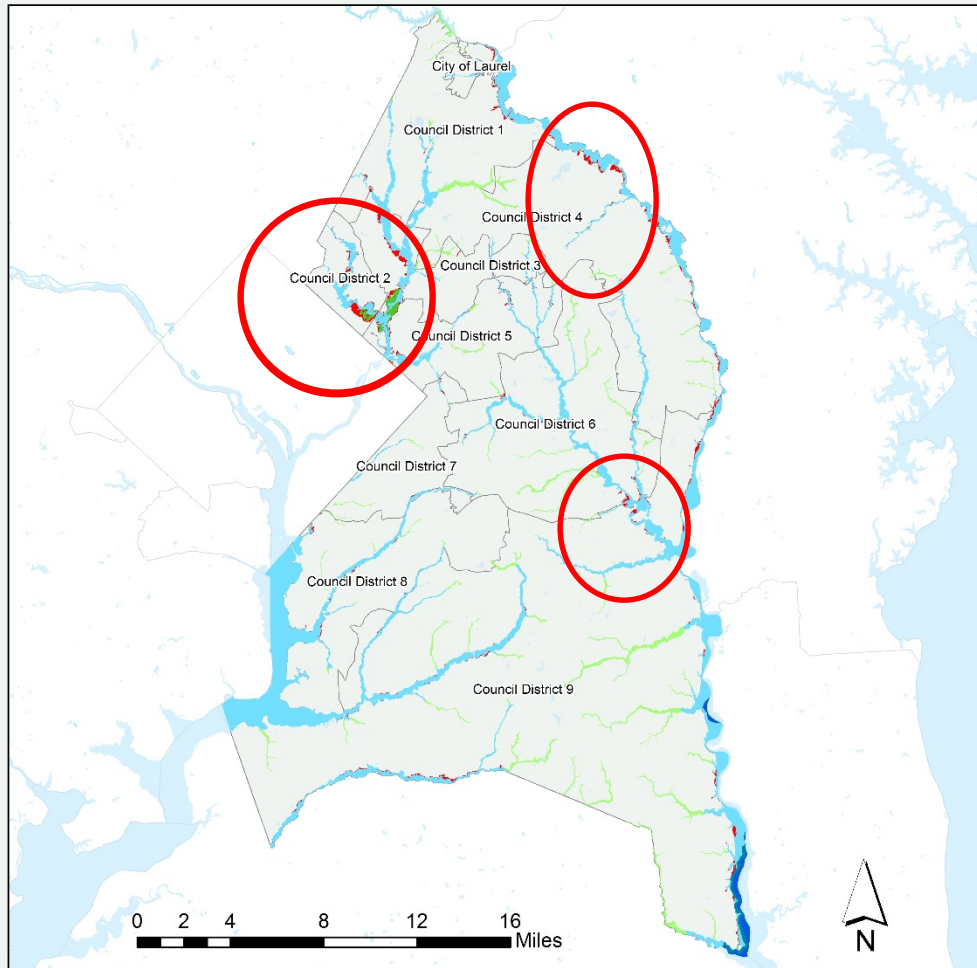
NFIP Policies in Force

Jurisdiction	Policies in Force	Insurance In-Force Whole	Written Premium In-Force
City of Laurel	150	\$36,977,200	\$185,372
Prince Georges County	3,387	\$778,365,800	\$2,232,266

NFIP Claims as of 31 Dec 2016

Jurisdiction	Total Losses	Closed Losses	Open Losses	CWOP Losses	Total Payments
City of Laurel	17	5	0	12	\$99,871
Prince Georges County	680	384	2	294	\$4,168,896
Maryland Totals	18,145	13,223	49	4,873	\$289,719,855

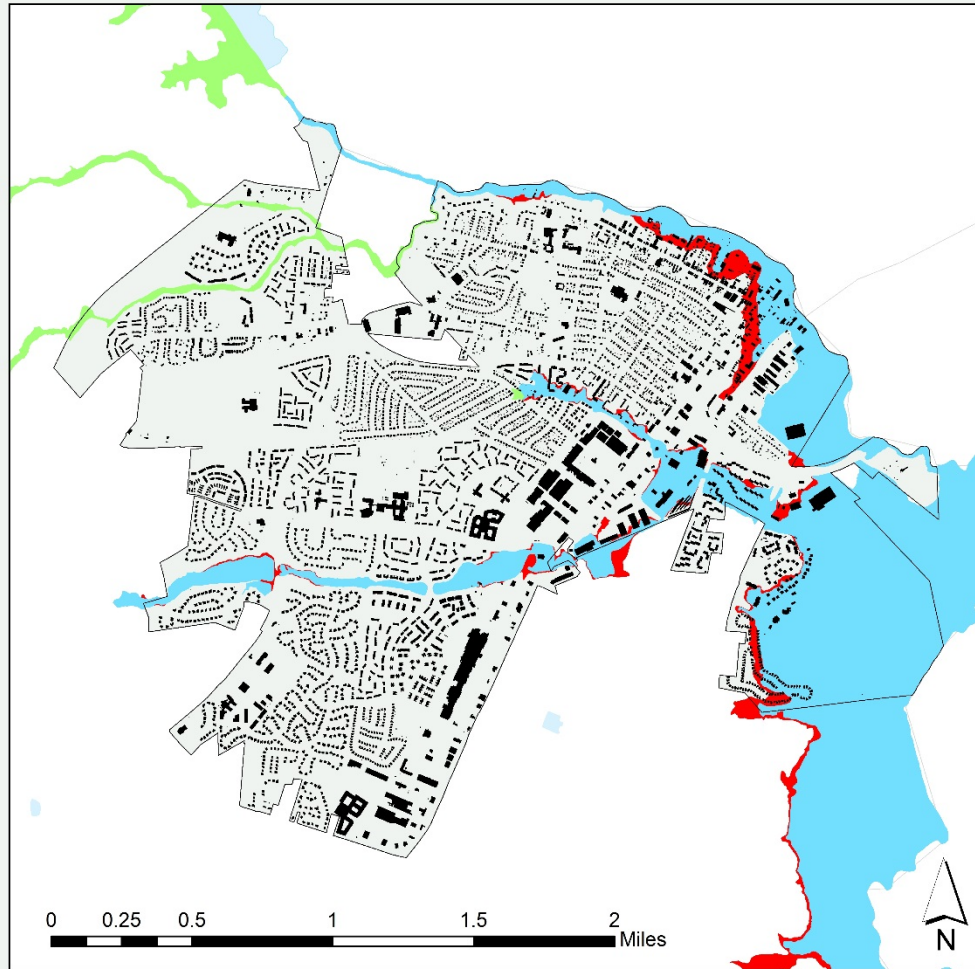
PRINCE GEORGE'S COUNTY AND CITY OF LAUREL HAZARD MITIGATION PLAN 2017 UPDATE
FEMA FLOOD ZONES IN PRINCE GEORGE'S COUNTY



Percent Annual Change of Flooding



PRINCE GEORGE'S COUNTY AND CITY OF LAUREL HAZARD MITIGATION PLAN 2017 UPDATE
FEMA FLOOD ZONES IN THE CITY OF LAUREL



Percent Annual Chance Flooding

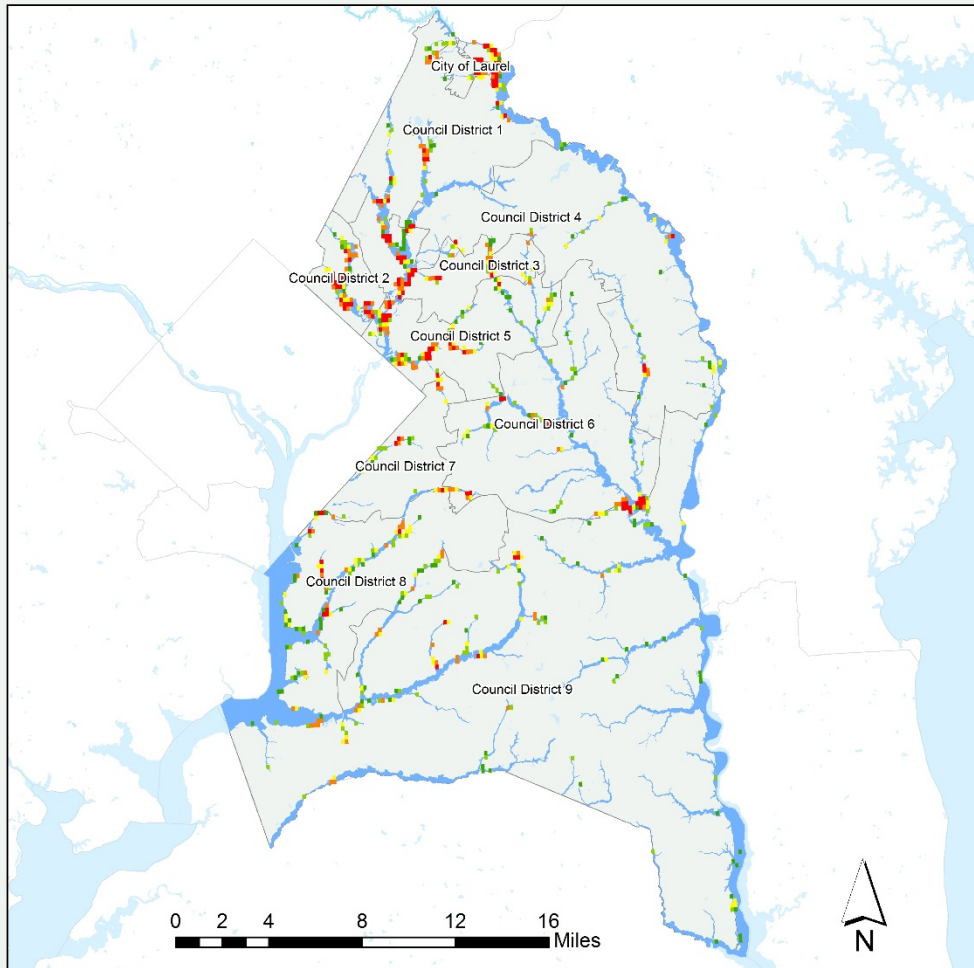
- | | |
|--|--|
|  X - 0.2% FLOOD HAZARD |  AO - 1% SHALLOW DETAILED (SLOPING TERRAIN) |
|  A - 1% APPROXIMATE FLOOD HAZARD |  OPEN WATER |
|  AE - 1% DETAILED FLOOD HAZARD |  VE - 1% COASTAL DETAILED |
|  AH - 1% SHALLOW DETAILED (PONDING) |  X - PROTECTED BY LEVEE |



Total Exposure In Floodplain (TEIF) by Political Areas

Political Area	TEIF 100 Yr	TEIF 500 Yr
City of Laurel	\$14,300,000	\$250,000,000
Council District 1	\$22,500,000	\$348,000,000
Council District 2	\$17,700,000	\$542,000,000
Council District 3	\$20,900,000	\$316,000,000
Council District 4	\$2,560,000	\$29,800,000
Council District 5	\$14,800,000	\$224,000,000
Council District 6	\$3,050,000	\$109,000,000
Council District 7	\$2,410,000	\$35,100,000
Council District 8	\$7,400,000	\$91,100,000
Council District 9	\$7,670,000	\$169,000,000
Total	\$113,000,000	\$2,110,000,000

TEIF 100 YR WITH 1000 FT GRIDS



1000 sq. foot
Grids showing general
Floodplain exposure
1% Special Flood
Hazard Area
(regulated floodplain)

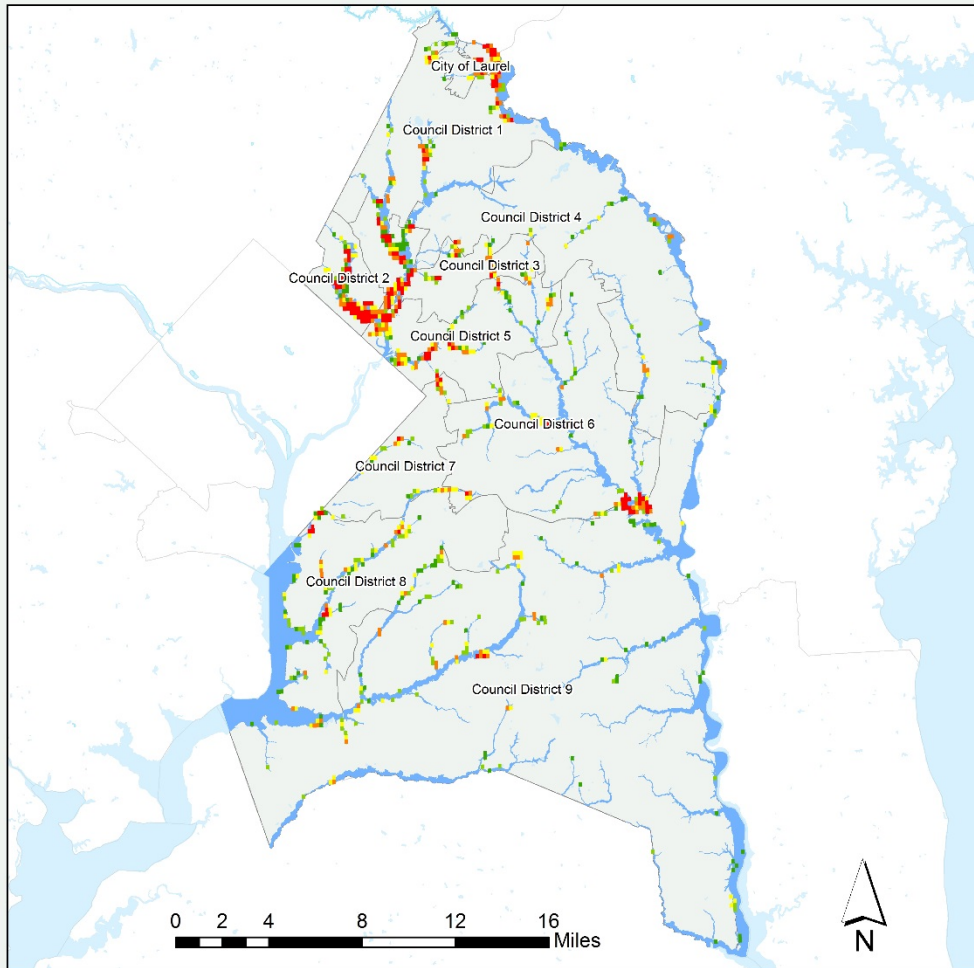
Total Exposure in Grid

- Low
- Medium-Low
- Medium
- Medium-High
- High
- 500 Year Flood

1000 ft. square grids generalizing the total building exposure in floodplain (Low to High) by Council Districts in Prince George's County and the City of Laurel.



TEIF 500 YR WITH 1000 FT GRIDS



Total Exposure in Grid

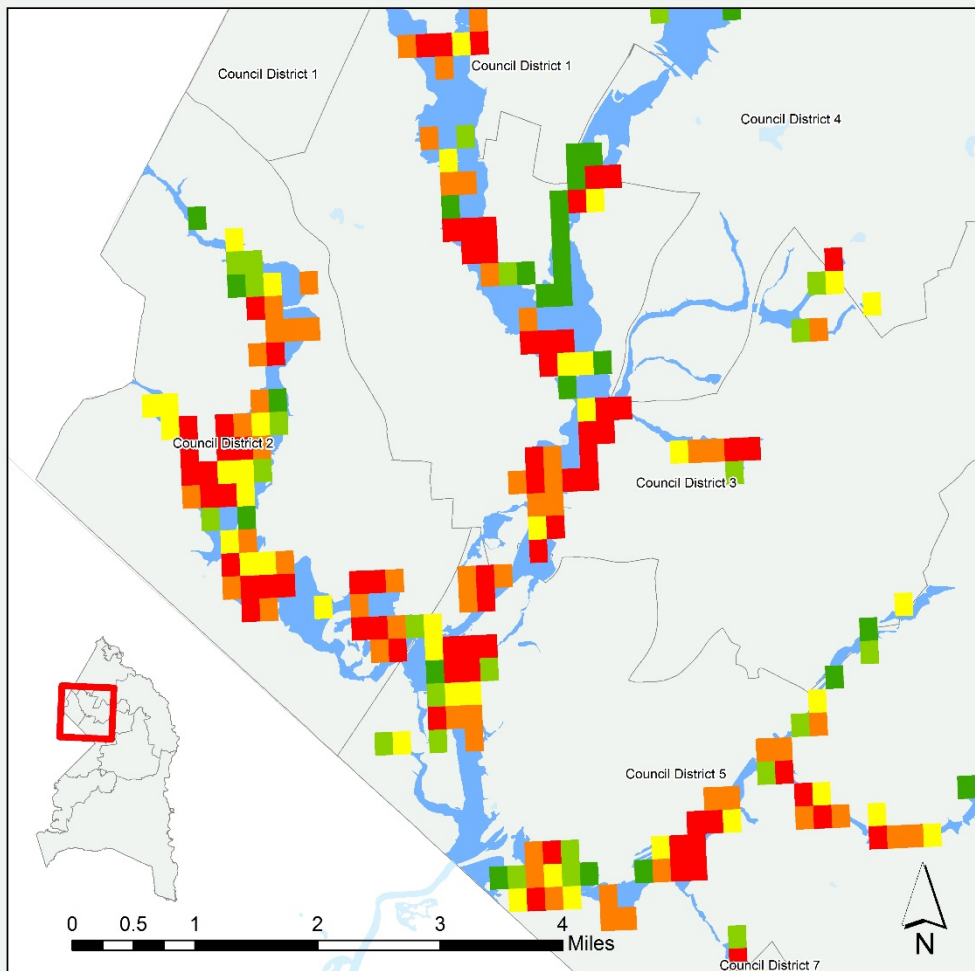
- Low
- Medium-Low
- Medium
- Medium-High
- High
- 500 Year Flood

1000 ft. square grids generalizing the total building exposure in floodplain (Low to High) by Council Districts in Prince George's County and the City of Laurel.



1000 sq. foot
Grids showing general
Floodplain exposure
0.02% Special Flood
Hazard Area
(regulated floodplain)

TEIF 100 YR WITH 1000 FT GRIDS



Total Exposure in Grid

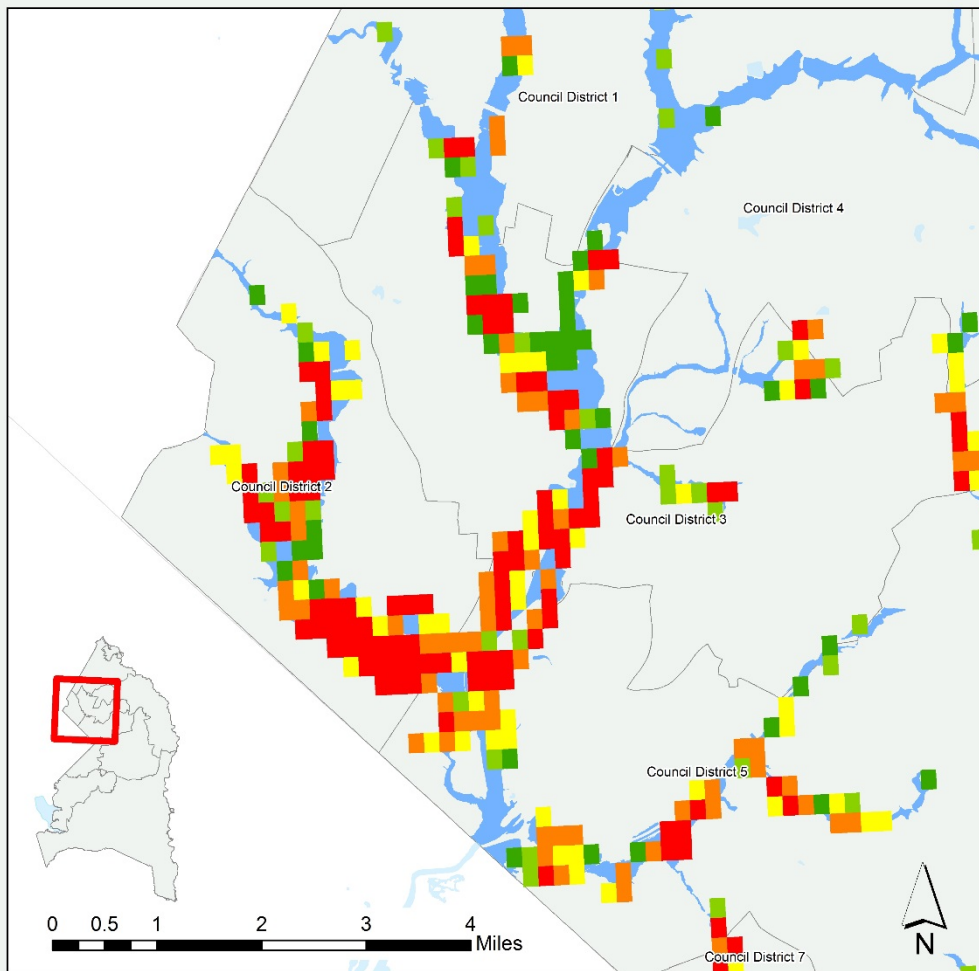
- Low
- Medium-Low
- Medium
- Medium-High
- High
- 500 Year Flood

1000 ft. square grids generalizing the total building exposure in floodplain (Low to High) by Council Districts in Prince George's County.



Zoomed in 1%
Floodplain exposure –
Council Districts 1 - 5

TEIF 500 YR WITH 1000 FT GRIDS



Zoomed in 1%
Floodplain exposure –
Council Districts 1 - 5

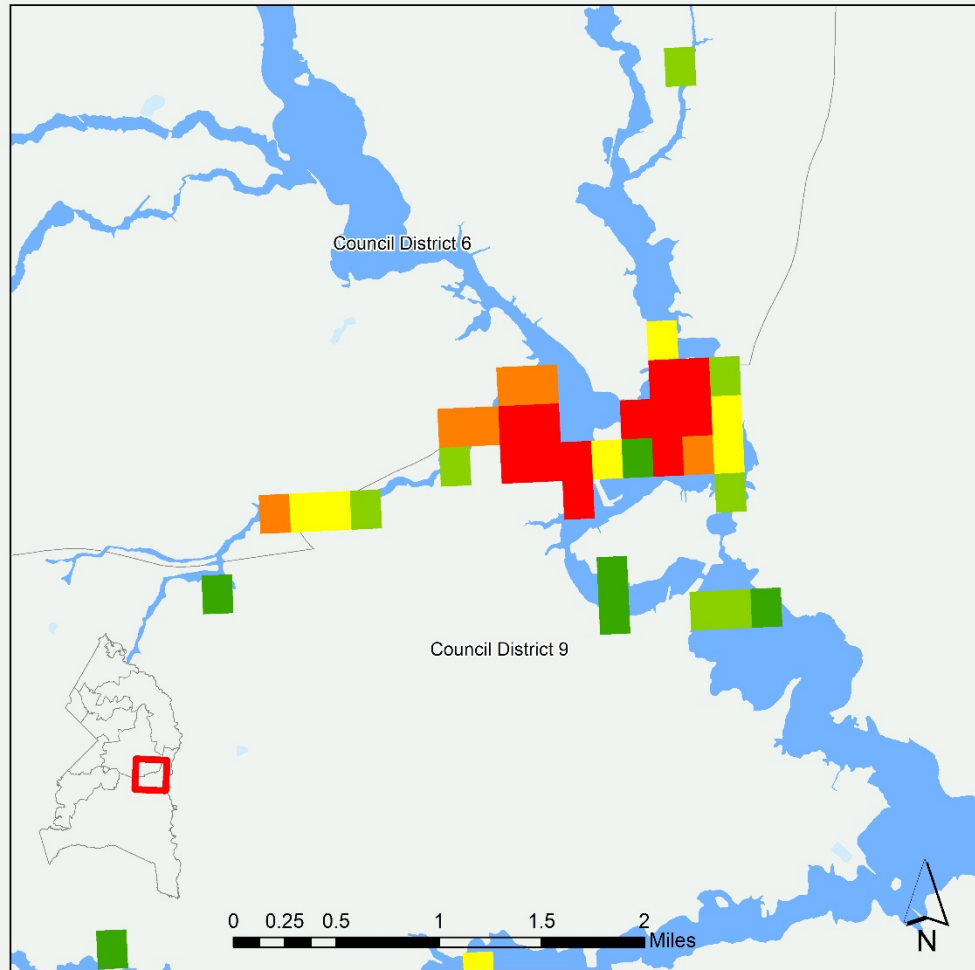
Total Exposure in Grid

- Low
- Medium-Low
- Medium
- Medium-High
- High
- 500 Year Flood

1000 ft. square grids generalizing the total building exposure in floodplain (Low to High) by Council Districts in Prince George's County.



TEIF 100 YR WITH 1000 FT GRIDS



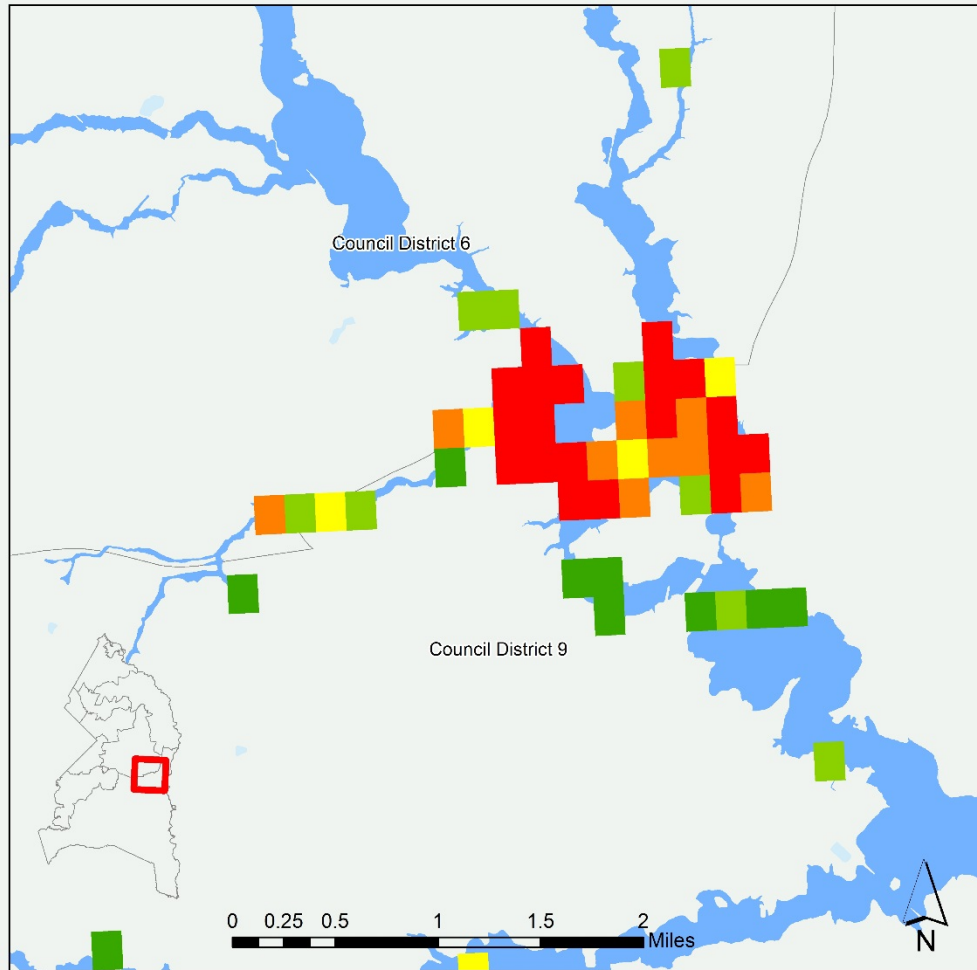
Total Exposure in Grid

- Low
- Medium-Low
- Medium
- Medium-High
- High
- 500 Year Flood

1000 ft. square grids generalizing the total building exposure in floodplain (Low to High) by Council Districts in Prince George's County.



TEIF 500 YR WITH 1000 FT GRIDS



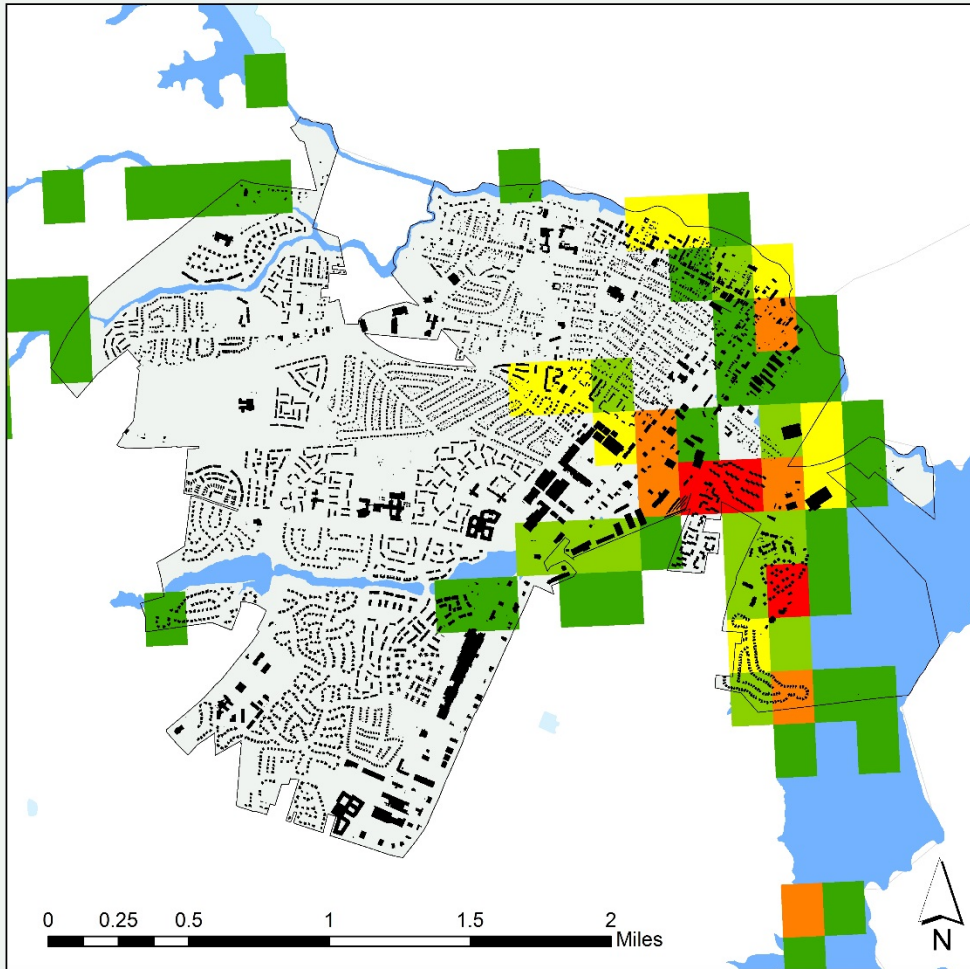
Total Exposure in Grid

- Low
- Medium-Low
- Medium
- Medium-High
- High
- 500 Year Flood

1000 ft. square grids generalizing the total building exposure in floodplain (Low to High) by Council Districts in Prince George's County.








TEIF 100 YR WITH 1000 FT GRIDS



1% floodplain exposure
shown with building footprints
City of Laurel

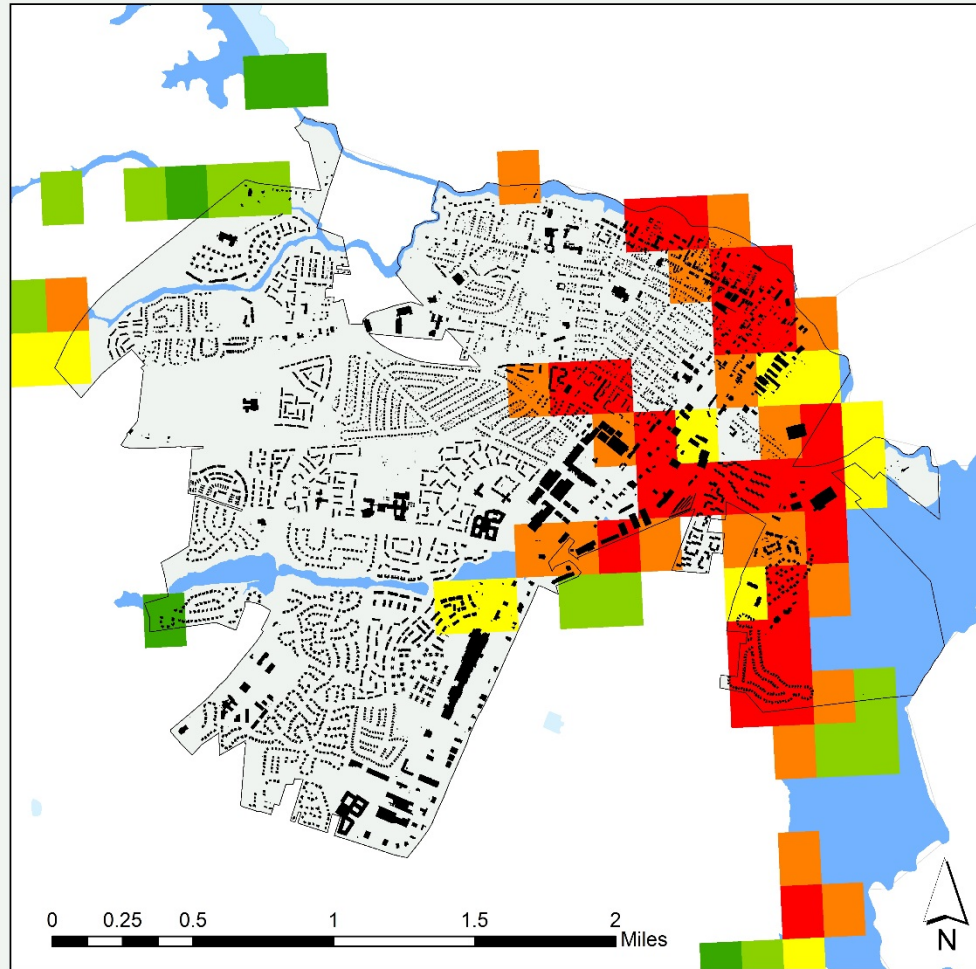
Floodplain Boundaries

- | | |
|--|--|
|  Low |  Medium-High |
|  Medium-Low |  High |
|  Medium |  500 Year Flood |

1000 ft. square grids generalizing the total building exposure in floodplain (Low to High) in the City of Laurel.



TEIF 500 YR WITH 1000 FT GRIDS



Floodplain Boundaries

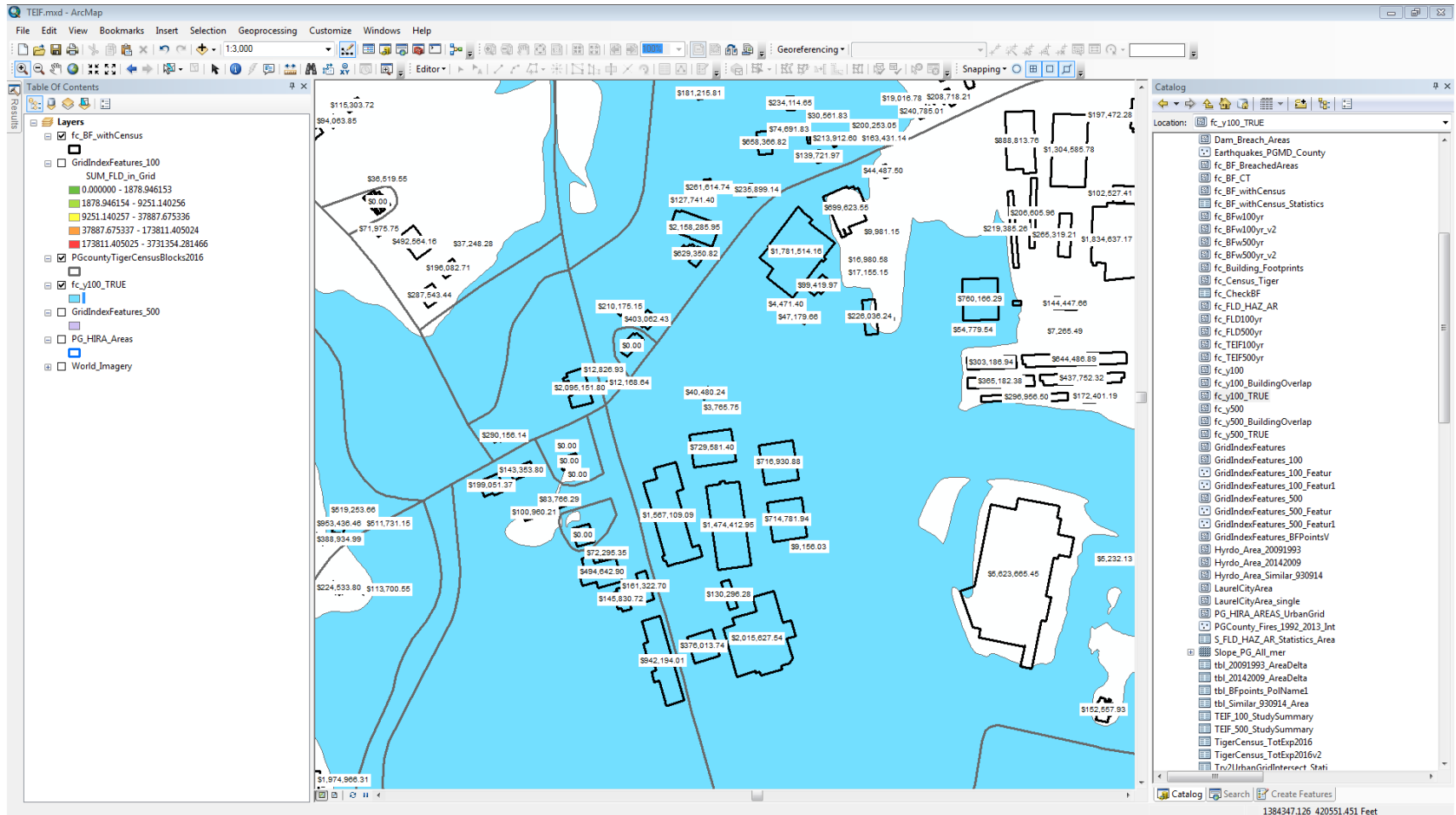
- 500 Year Flood
- Low
- Medium-Low
- Medium
- Medium-High
- High

1000 ft. square grids generalizing the total building exposure in floodplain (Low to High) in the City of Laurel.

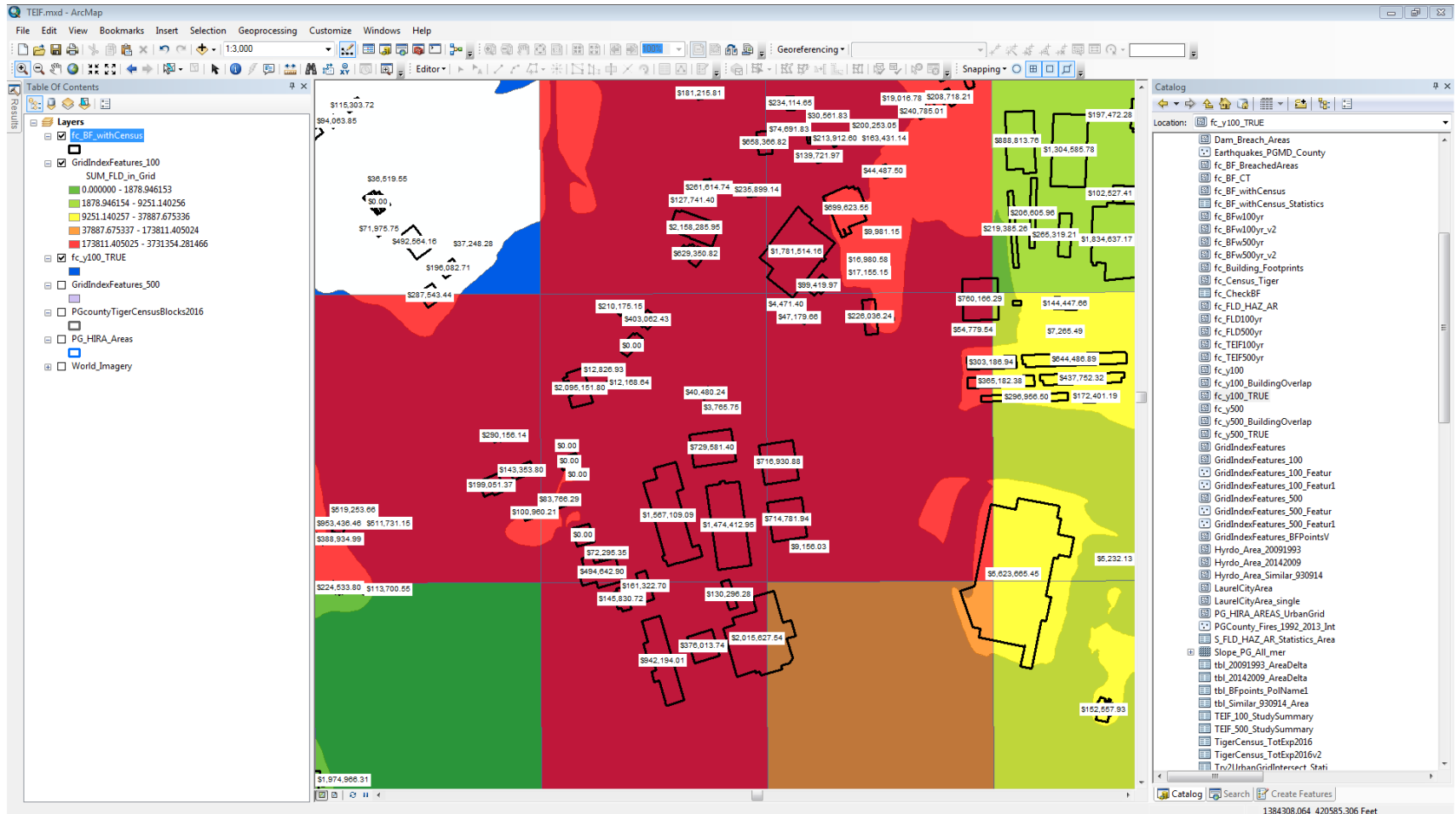


0.02% Floodplain exposure with building footprints
City of Laurel

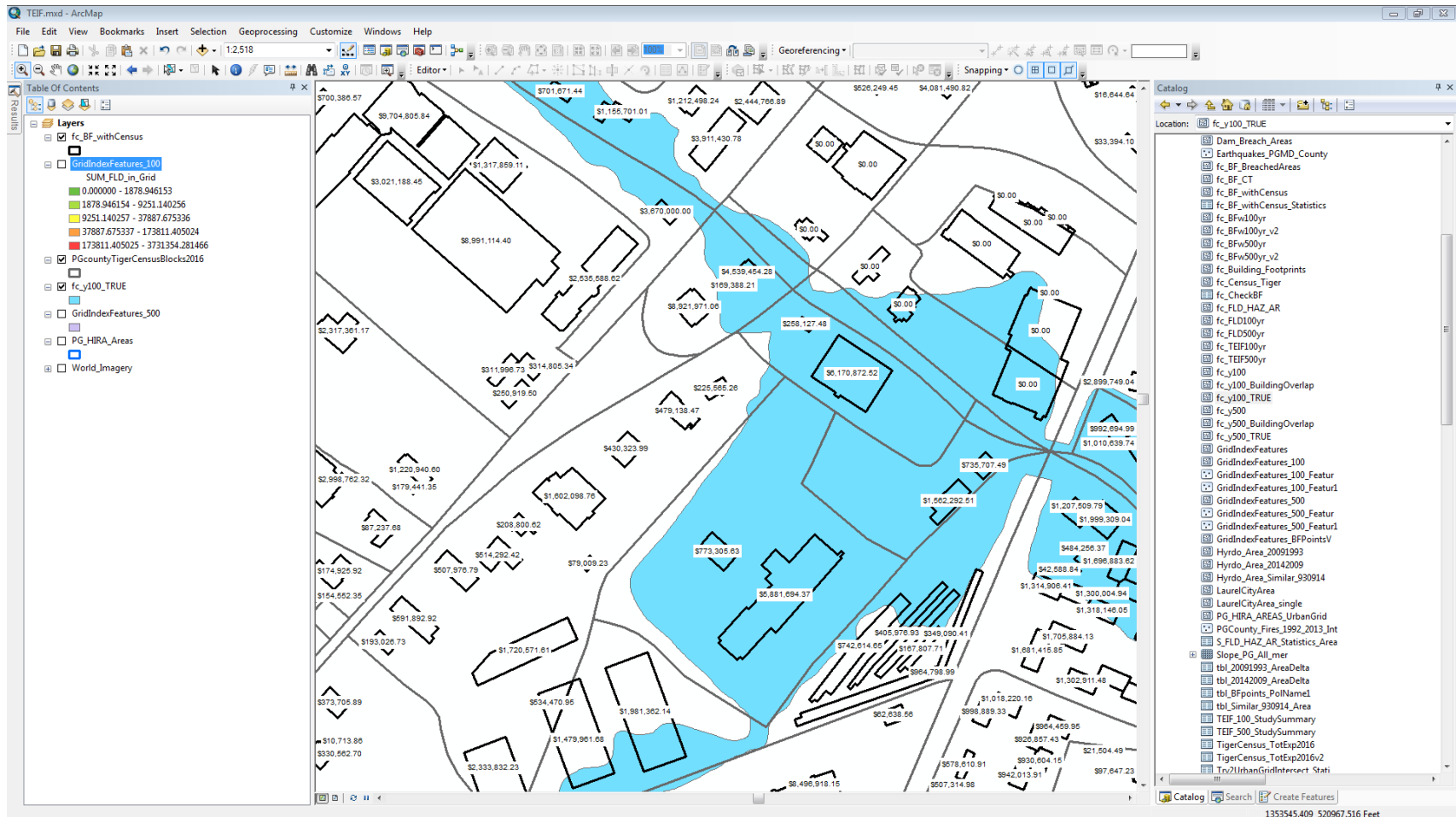
TEIF 2.0 – Prince George’s County



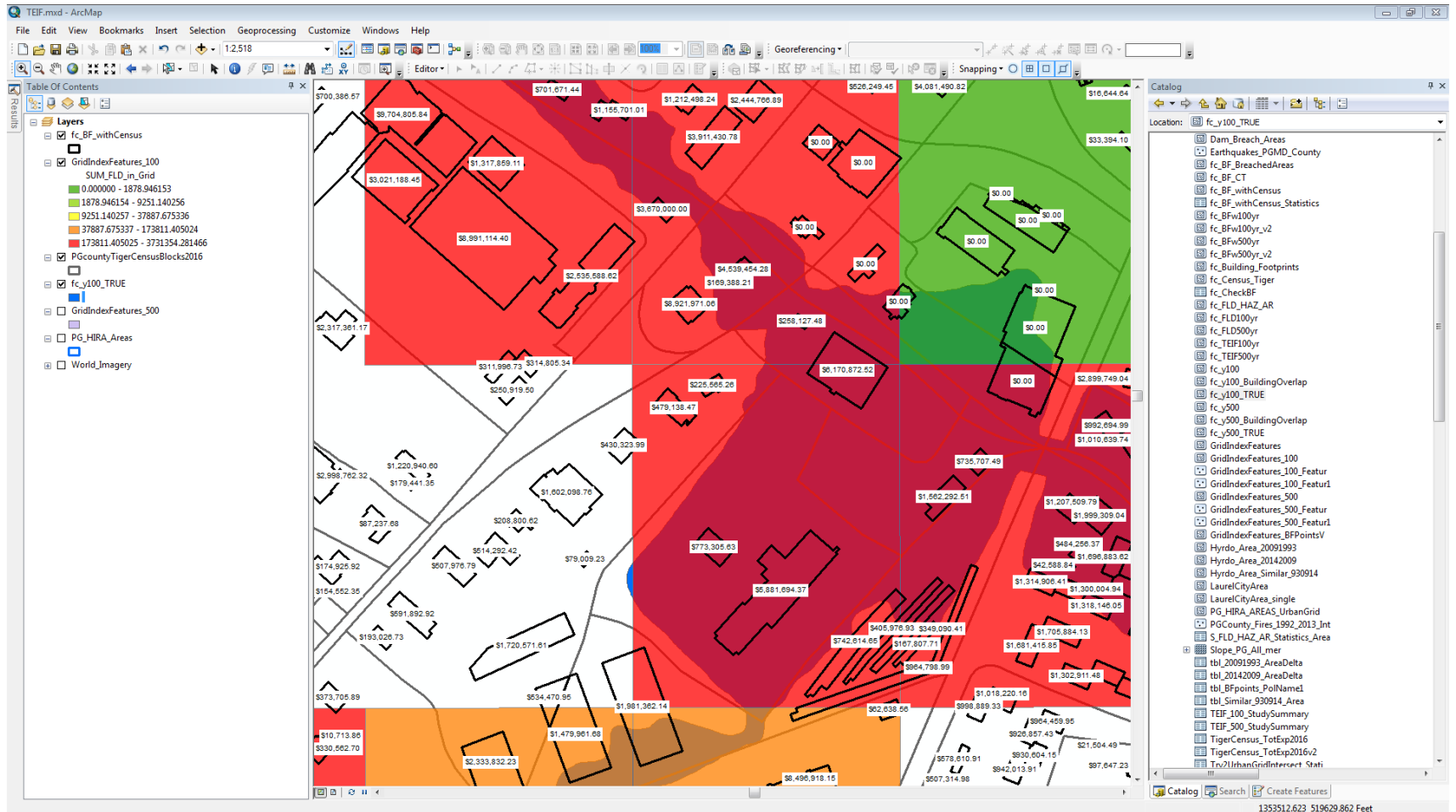
TEIF 2.0 – Prince George’s County



TEIF 2.0 – City of Laurel



TEIF 2.0 – City of Laurel





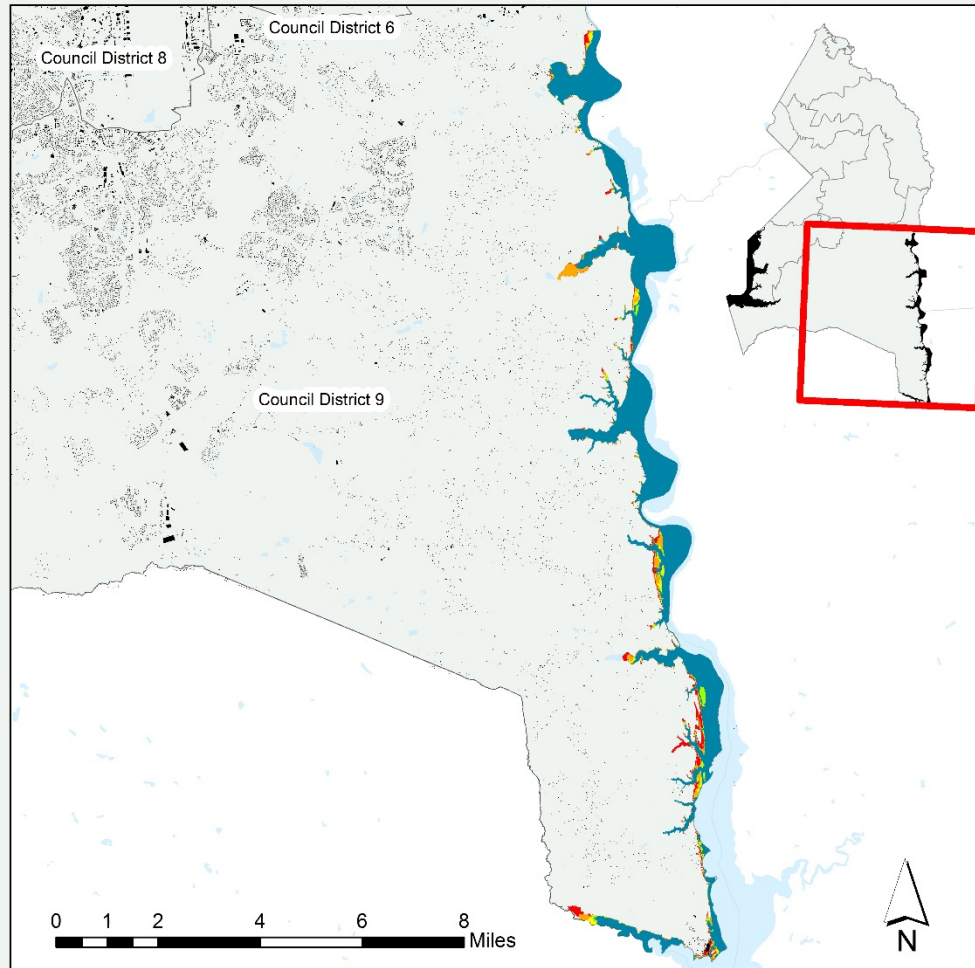
Coastal Flooding

Coastal Flooding

Coast Smart Exposure Summary

Sea Level Rise Scenario	Weighted Average BFE	Number of Buildings Affected	Approximate Value of Affected Buildings
2	6.34	105	\$12,700,000
3	6.53	107	\$13,000,000
4	7.90	167	\$21,600,000
5	9.00	205	\$25,700,000
6	10.4	238	\$31,400,000
7	12.8	382	\$56,400,000

PATUXENT RIVER 100 YEAR COASTAL FLOODPLAINS



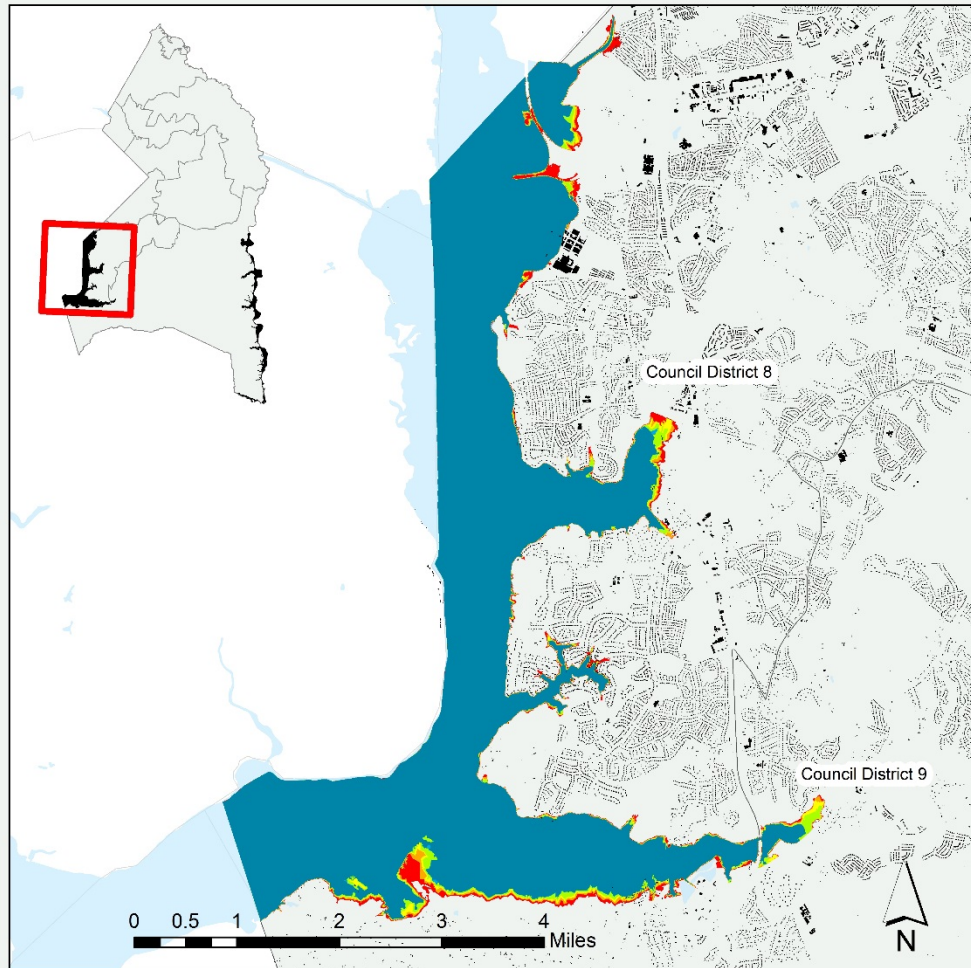
CoastSmart Scenarios

- Scenario 2
- Scenario 3
- Scenario 4
- Scenario 5
- Scenario 6
- Scenario 7

Coastal floodplain boundaries for 100-year-flood with building footprints based off the CoastSmart Flood Hazard Analysis of the Patuxent River. Shows predictive models of sea level rise for different scenarios in the Council Districts of Prince George's County.



POTOMAC RIVER 100 YEAR COASTAL FLOODPLAINS



CoastSmart Scenarios

-  Scenario 2
-  Scenario 3
-  Scenario 4
-  Scenario 5
-  Scenario 6
-  Scenario 7

Coastal floodplain boundaries for 100-year-flood with building footprints based off the CoastSmart Flood Hazard Analysis of the Potomac River. Shows predictive models of sea level rise for different scenarios in the Council Districts of Prince George's County.





Dam Hazard Risk

Duckett Dam – Sunny Day Scenario Low Risk Scenario

Political Area	Buildings Affected	Total Exposure Value
City of Laurel	650	\$425,000,000
Council District 1	772	\$487,000,000
Council District 4	125	\$9,210,000
Total	1547	\$921,210,000

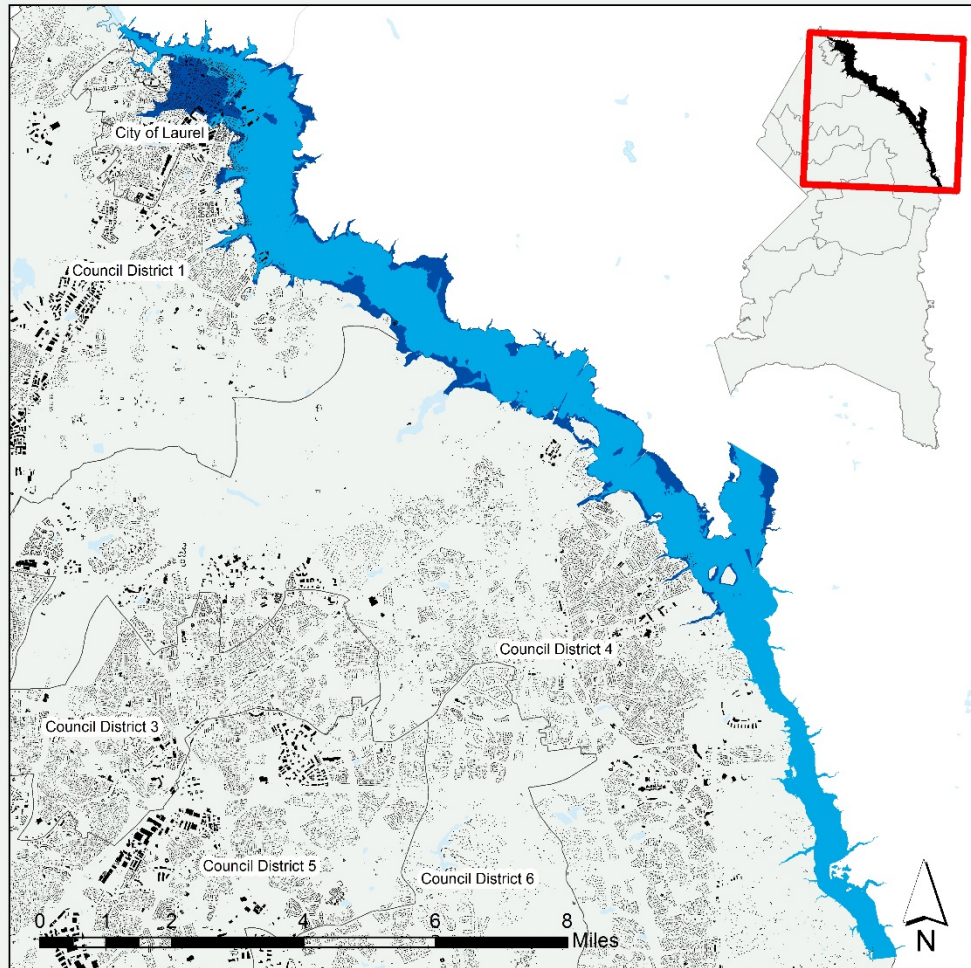
Brighton and Duckett Dam High Risk Scenario

Political Area	Buildings Affected	Total Exposure Value
City of Laurel	2736	\$1,040,000,000
Council District 1	3036	\$1,170,000,000
Council District 4	282	\$10,300,000
Total	6054	\$2,220,300,000

Small Dam Inundation Zones

Dam Breach Area	Political Area	Buildings Affected	Building Exposure
Heritage Glen Dam Breach Area	Council District 6	14	\$3,800,000
Indian Creek 2 & 3 Dam Breach Area	Council District 1	163	\$38,700,000
Lake Arbor Dam Breach Area	Council District 6	99	\$25,300,000
Largo Town Center Dam Breach Area	Council District 6	1	\$52,500,000
Laurel Lake Dam Breach Area 1	City of Laurel	40	\$44,400,000
	Council District 1	41	\$44,500,000
Laurel Lake Dam Breach Area 2	City of Laurel	35	\$62,900,000
	Council District 1	39	\$79,700,000

DAM INUNDATIONS IN PRINCE GEORGE'S COUNTY



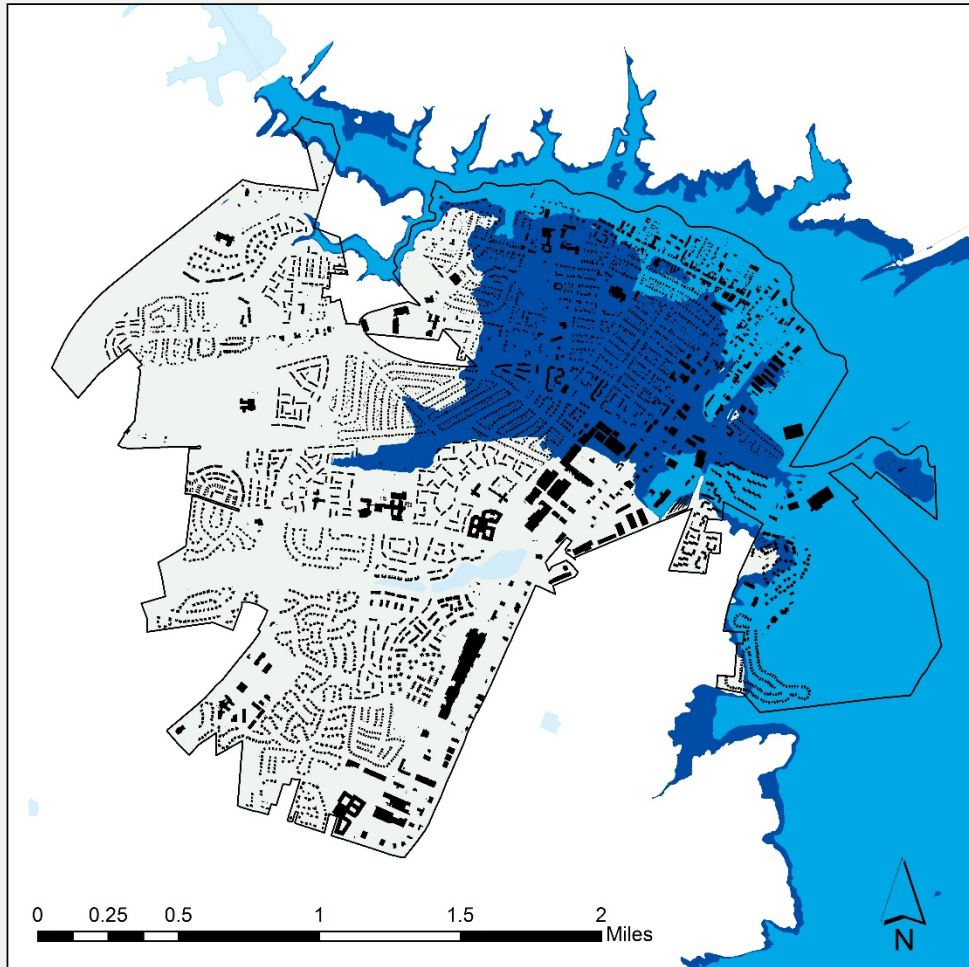
Dam Inundations Zones

 Duckett Dam - Sunny Day Scenario  Brighton - Duckett Dams - Flood Scenario

Dam Inundation Zones for the Sunny Day Scenario of Duckett Dam and the Flood Scenario for both Duckett and Brighton Dams by Council Districts in Prince George's County and in the City of Laurel.



DAM INUNDATIONS IN THE CITY OF LAUREL



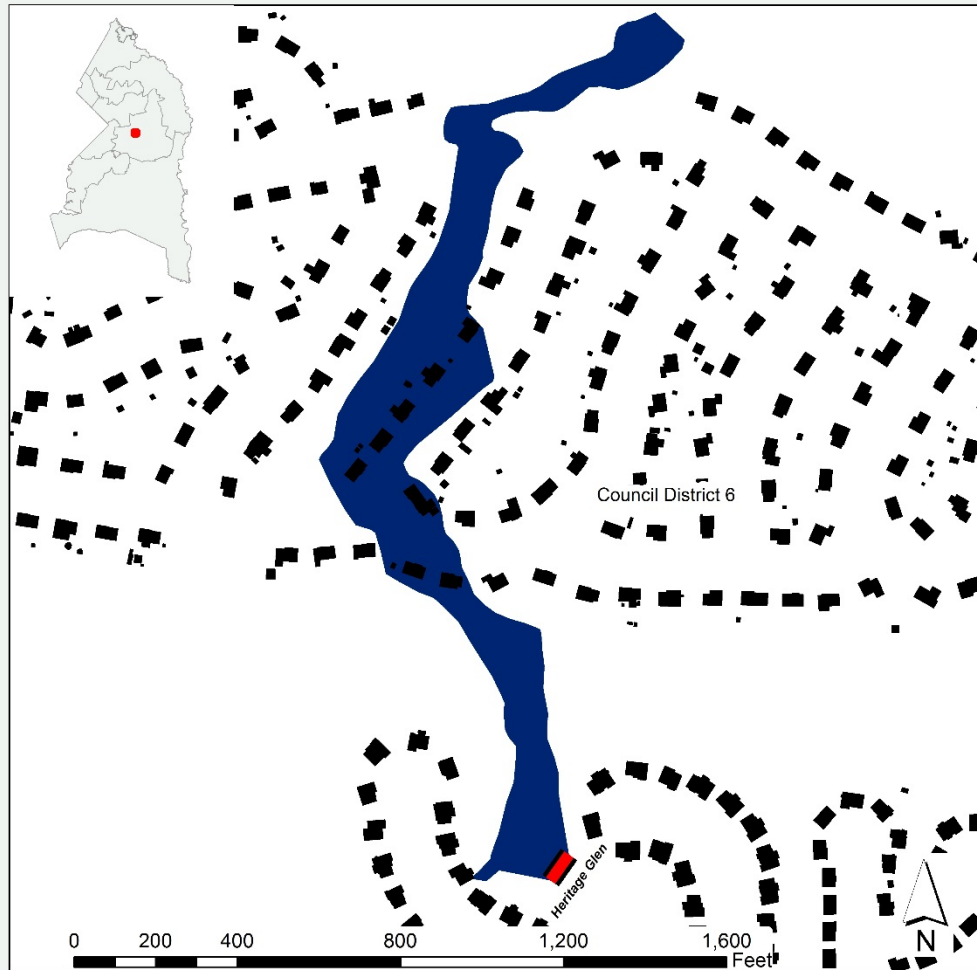
Dam Inundations Zones

 Duckett Dam - Sunny Day Scenario  Brighton - Duckett Dams - Flood Scenario

Dam Inundation Zones for the Sunny Day Scenario of Duckett Dam and the Flood Scenario for both Duckett and Brighton Dams in the City of Laurel.



PRINCE GEORGE'S COUNTY AND CITY OF LAUREL HAZARD MITIGATION PLAN 2017 UPDATE
HERITAGE GLEN DAM INUNDATION ZONE IN PRINCE GEORGE'S COUNTY



Dam Inundation Zone

-  High Hazard Dams
-  Heritage Glen Dam Breach Area

Heritage Glen Dam Inundation Zone by Council Districts in Prince George's County.



INDIAN CREEK DAMS INUNDATION ZONE IN PRINCE GEORGE'S COUNTY



Dam Inundation Zone

-  High Hazard Dams
-  Indian Creek Dam Breach Area

Indian Creek Dam Inundation Zone by Council Districts in Prince George's County.



LAKE ARBOR DAM INUNDATION ZONE IN PRINCE GEORGE'S COUNTY



Dam Inundation Zone

-  High Hazard Dams
-  Lake Arbor Dam Breach Area

Lake Arbor Dam Inundation Zone by Council Districts in Prince George's County.



LAUREL LAKE DAM INUNDATION ZONE IN PRINCE GEORGE'S COUNTY



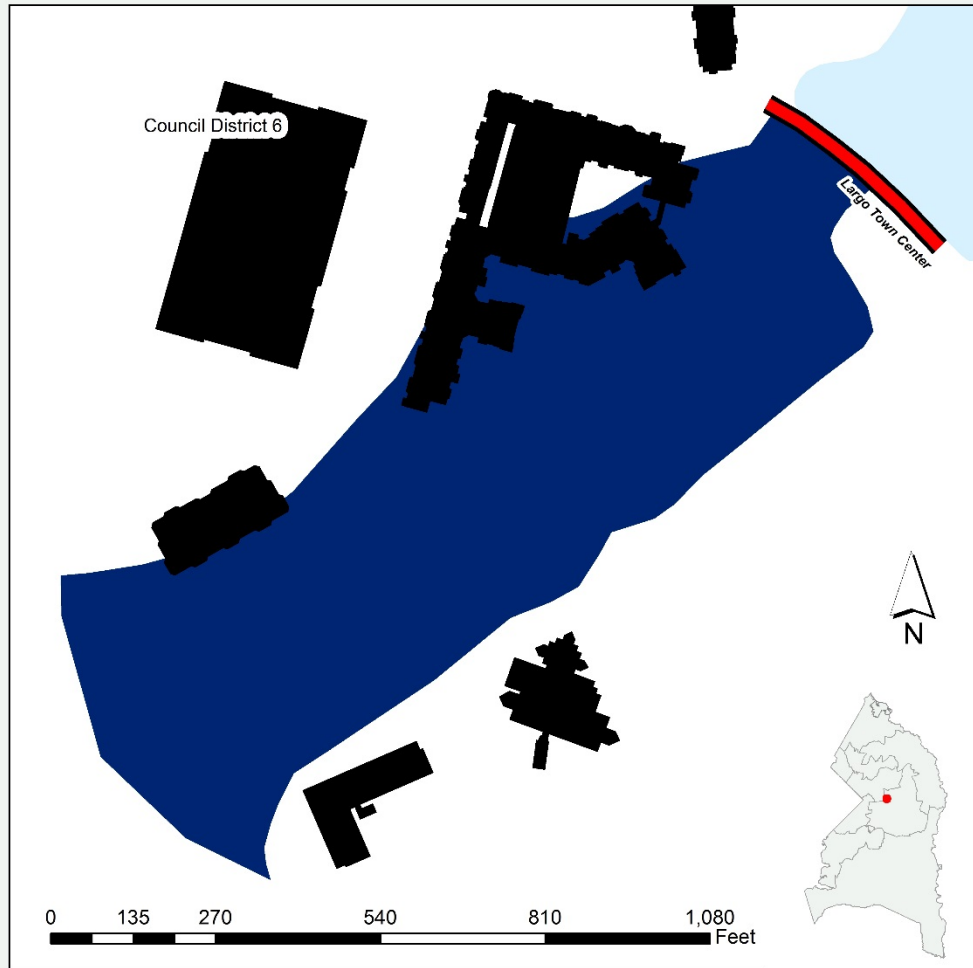
Dam Inundation Zone

-  High Hazard Dams
-  Laurel Lake Dam Breach Area



Laurel Lake Dam Inundation Zone by Council Districts in Prince George's County.



PRINCE GEORGE'S COUNTY AND CITY OF LAUREL HAZARD MITIGATION PLAN 2017 UPDATE
LARGO TOWN CENTER DAM INUNDATION ZONE IN PRINCE GEORGE'S COUNTY



Dam Inundation Zone

-  High Hazard Dams
-  Largo Town Center Dam Breach Area

Largo Town Center Dam Inundation Zone by Council Districts in Prince George's County.





Levee Hazard Risk

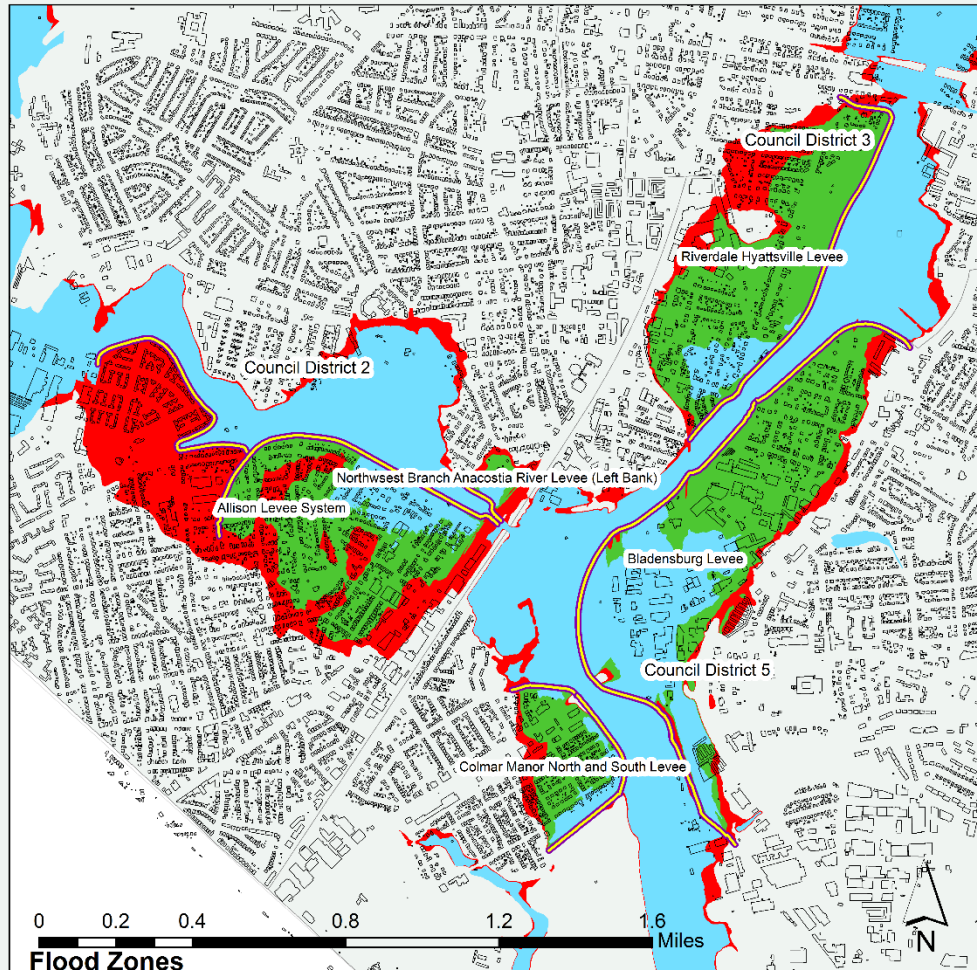
Levee Area Risk Exposure

Levee System	Political Area	SFHA Flood Zone	SFHA Flood Zone Subtype	Building Count	Building Exposure
Allison Levee System	Council District 2	AE		11	\$3,370,000
		AH		131	\$19,000,000
		X	0.2 Pct Annual Chance	724	\$265,000,000
		X	Reduced Flood Risk Due To Levee	580	0
Colmar Manor North and South Levee	Council District 5	AH		24	\$3,360,000
		X	0.2 Pct Annual Chance	50	\$10,400,000
		X	Reduced Flood Risk Due To Levee	257	\$52,800,000
Bladensburg Levee	Council District 5	AE		13	\$4,410,000
		AH		48	\$43,700,000
		X	0.2 Pct Annual Chance	44	\$19,200,000
		X	Reduced Flood Risk Due To Levee	376	\$74,900,000
Northwest Branch Anacostia River Levee (Left Bank)	Council District 2	AH		1	\$61,000
		X	0.2 Pct Annual Chance	6	\$2,390,000
		X	Reduced Flood Risk Due To Levee	7	\$940,000
Riverdale Hyattsville Levee	Council District 3	X	0.2 Pct Annual Chance	166	\$23,400,000
		X	Reduced Flood Risk Due To Levee	274	\$41,900,000
	Council District 5	AE		4	\$666,000
		AH		69	\$7,510,000
		X	0.2 Pct Annual Chance	14	\$9,990,000
		X	Reduced Flood Risk Due To Levee	212	\$33,400,000


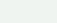

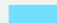
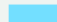

Levee Area Total Exposure Summary

SFHA Zone	Building Count	Building Exposure
AE, AH	301	\$82,077,000
0.2 Pct Annual Chance Flood Hazard	1004	\$330,380,000
Reduced Flood Risk Due To Levee	1706	\$364,940,000

REDUCED RISK LEVEE AREAS IN PRINCE GEORGE'S COUNTY



Flood Zones

-  Levees
-  Levee Extent
-  X - 0.2% FLOOD HAZARD
-  AE - 1% DETAILED FLOOD HAZARD
-  AH - 1% SHALLOW DETAILED (PONDING)
-  X - PROTECTED BY LEVEE

Flood zones in levee-protected areas by Council Districts in Prince George's County. Flood zones in the extent have a reduced flood risk due to levees.



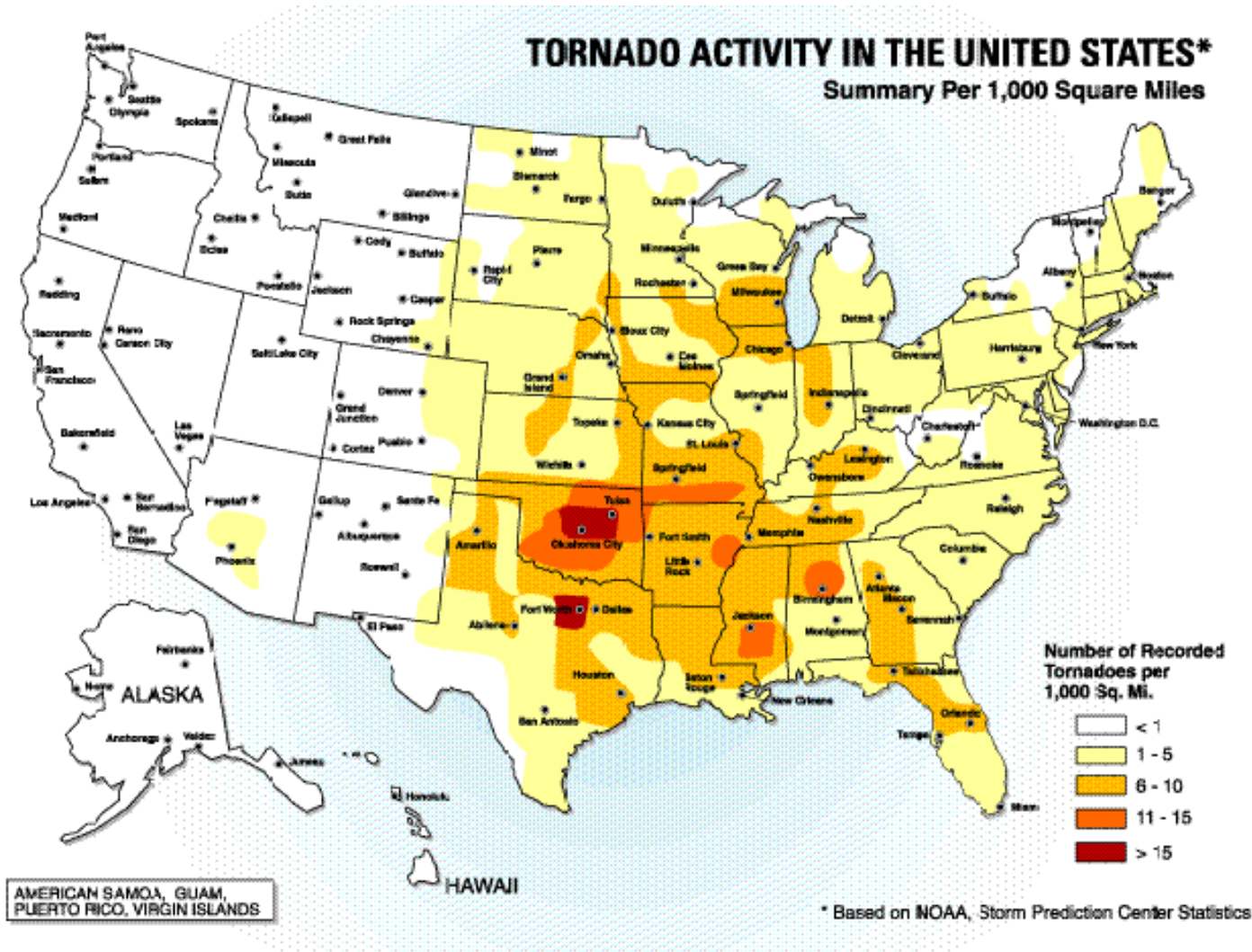


Tornado Hazard Risk

Tornado Damage Scale

Enhanced Fujita Scale	Wind Speeds (mph)	F-Scale	Wind Speeds (mph)	Damage	Frequency
EF0	65 to 85	F0	40 to 72	Light Damage. Some damage to chimneys, TV antennas, roof shingles, trees, and windows	29%
EF1	86 to 110	F1	73 to 112	Moderate Damage. Automobiles overturned, carports destroyed, trees uprooted	40%
EF2	111 to 135	F2	113 to 157	Considerable Damage. Roofs blown off homes, sheds and outbuildings demolished, mobile homes overturned	24%
EF3	136 to 165	F3	158 to 206	Severe Damage. Exterior walls and roofs blown off homes. Metal buildings collapsed or severely damaged. Forests and farmland flattened.	6%
EF4	166 to 200	F4	207 to 260	Devastating Damage. Few walls, if any, standing in well-built homes. Large steel and concrete missiles thrown far distances.	2%
EF5	Over 200	F5	261 to 318	Incredible Damage. Homes leveled with all debris removed. Schools, motels, and other larger structures have considerable damage with exterior walls and roofs gone. Top stories demolished.	Less than 1%

National Tornado Risk



Tornado History 1995-2015

Fujita Scale	Date	Community Affected	Deaths	Injuries	2016 Property Damages	2016 Total Damages
EF0	29 Sep 2015	Laurel	0	0	\$0	\$0
EF0	01 Jul 2013	Crestview Manor	0	0	\$513	\$117,000
EF0	19 Apr 2013	Westphalia	0	0	\$25,600	\$1,200,000
EF0	01 Jun 2012	Buena Vista	0	0	\$2,080	\$2,080
EF0	27 Apr 2011	Andrews Manor	0	0	\$5,310	\$5,310
EF0	27 Apr 2011	Friendly Pg Arpk Arp	0	0	\$106,000	\$106,000
EF0	27 Apr 2011	Westchester Estates	0	0	\$106,000	\$106,000
EF0	05 Apr 2011	Collington	0	0	\$2,120	\$2,120
EF0	08 May 2008	Clinton Hyde Fld Arp	0	0	\$111,000	\$111,000
EF0	08 May 2008	Woods Corner	0	0	\$55,500	\$55,500
EF1	20 Apr 2008	University Park	0	0	\$44,400	\$44,400
F3	24 Sep 2001	Hyattsville	2	55	\$135,000,000	\$135,000,000
F1	25 May 2001	Brandywine	0	0	\$33,700	\$33,700
F1	21 Jun 2000	Laurel	0	0	\$208,000	\$208,000
F1	13 May 2000	Brandywine	0	0	\$139,000	\$139,000
F0	24 Jun 1996	Andrews Afb	0	0	\$304,000	\$304,000
F1	24 Jun 1996	Upper Marlboro	0	0	\$761,000	\$761,000
F2	05 Oct 1995	Temple Hills	0	3	\$7,830,000	\$7,830,000
F1	18 May 1995	Cheverly	0	2	\$3,130,000	\$3,130,000

Local Tornado Risk

EF Scale Rating	Estimated Tornado Counts in Prince Georges County (1950-2014)
EF0	20
EF1	29.39
EF2	8.33
EF3	2.00
EF4	0.72
EF5	0

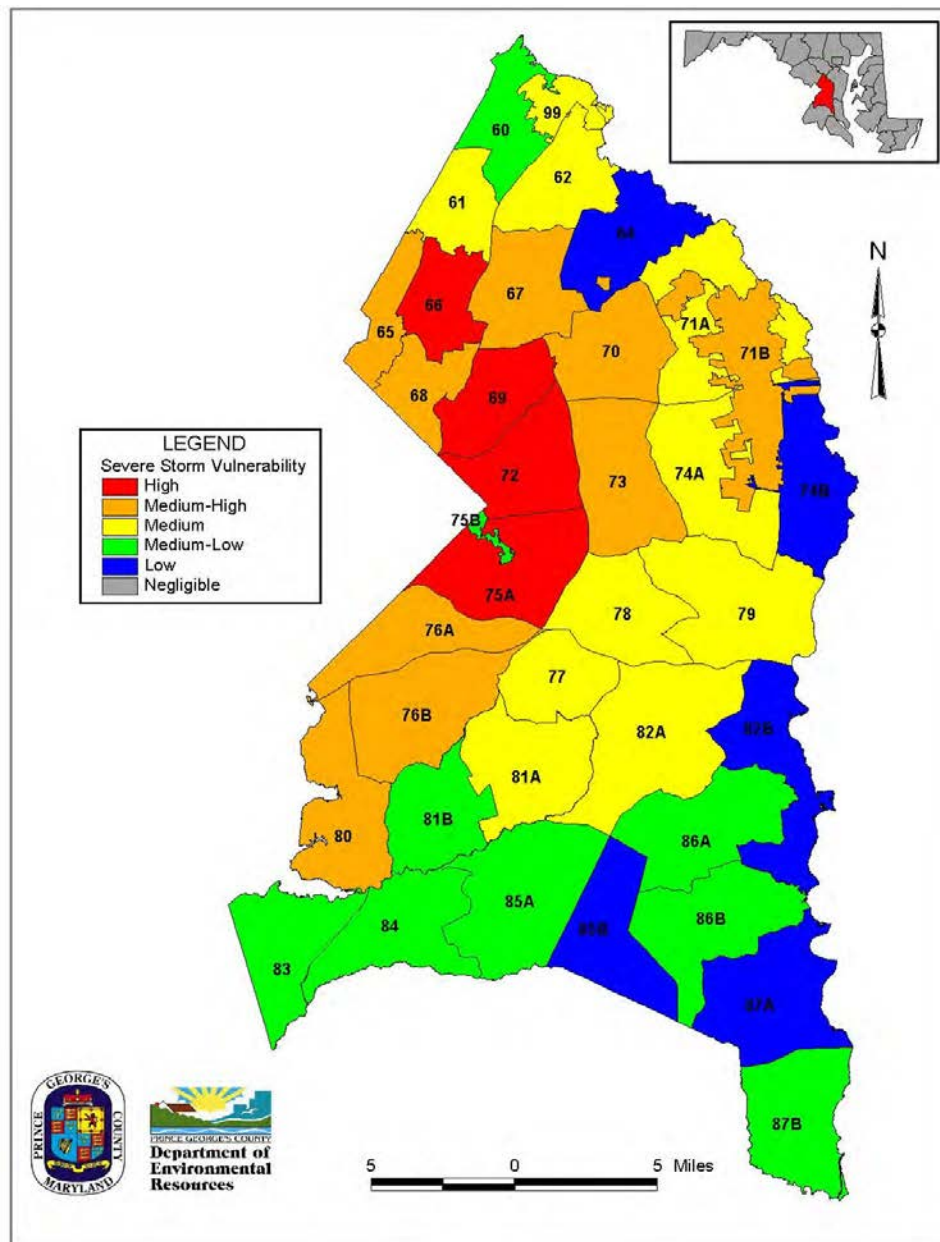
Source: Analysis of tornado records for Prince Georges County, MD taken from the FEMA Benefit-Cost Analysis Tool – Version 5.3.0.2 (Build Date 12/22/2016)



Severe Storms Hazard Risk

Severe Storm Hazard Vulnerability

Source: Severe Storm Vulnerability Map by Planning Area, Prince George's County and City of Laurel Maryland Hazard Mitigation Plan (2010 Update)





High Wind Hazard

High Wind Hazard Risk

Search Results

Query Date: Thu Mar 09 2017

Latitude: 38.8180

Longitude: -76.7508

**ASCE 7-10 Windspeeds
(3-sec peak gust in mph*):**

Risk Category I: 105

Risk Category II: 115

Risk Category III-IV: 120

MRI 10-Year:** 76

MRI 25-Year:** 84

MRI 50-Year:** 90

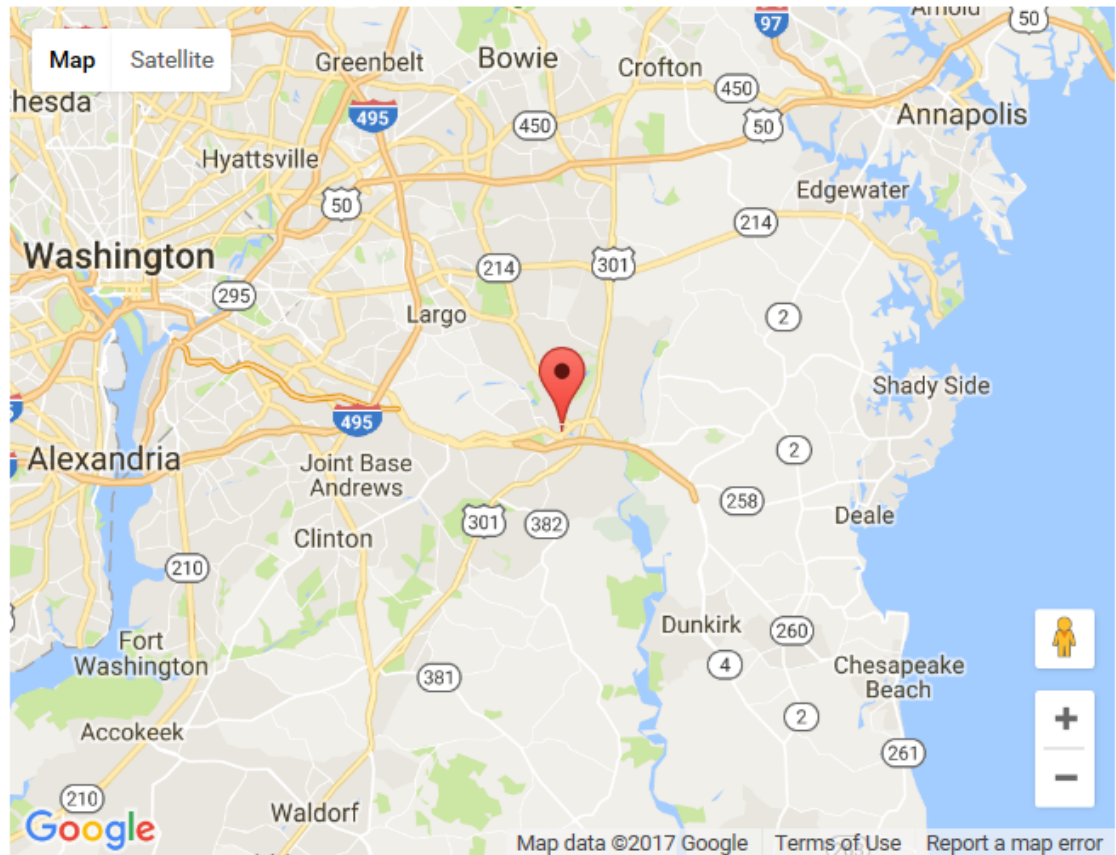
MRI 100-Year:** 96

ASCE 7-05 Windspeed:

90 (3-sec peak gust in mph)

ASCE 7-93 Windspeed:

72 (fastest mile in mph)



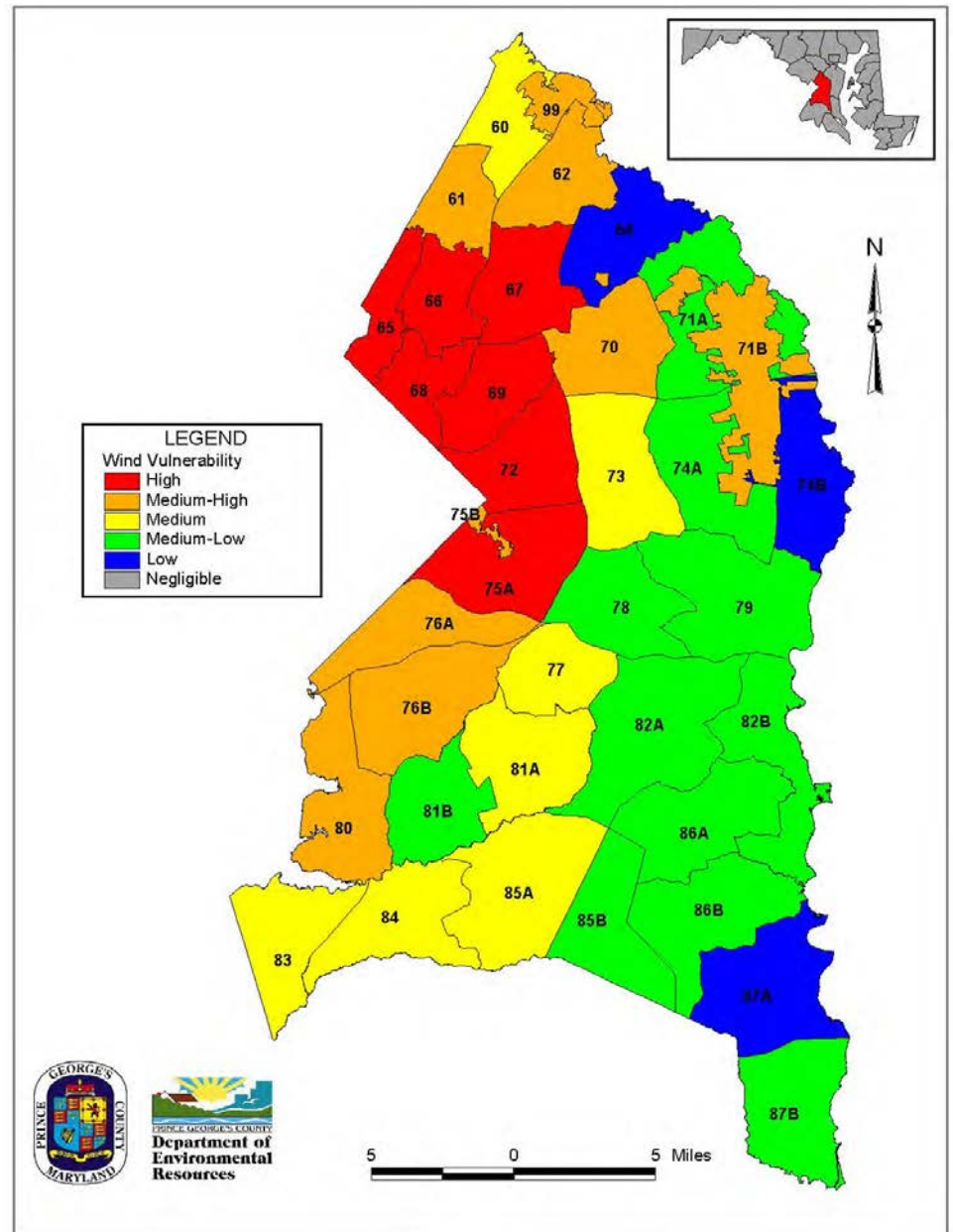
Source: Applied Technology Council (ATC) Wind Speed Map by Location (<http://windspeed.atcouncil.org/>)

*Miles per hour

**Mean Recurrence Interval

High Wind Hazard Vulnerability

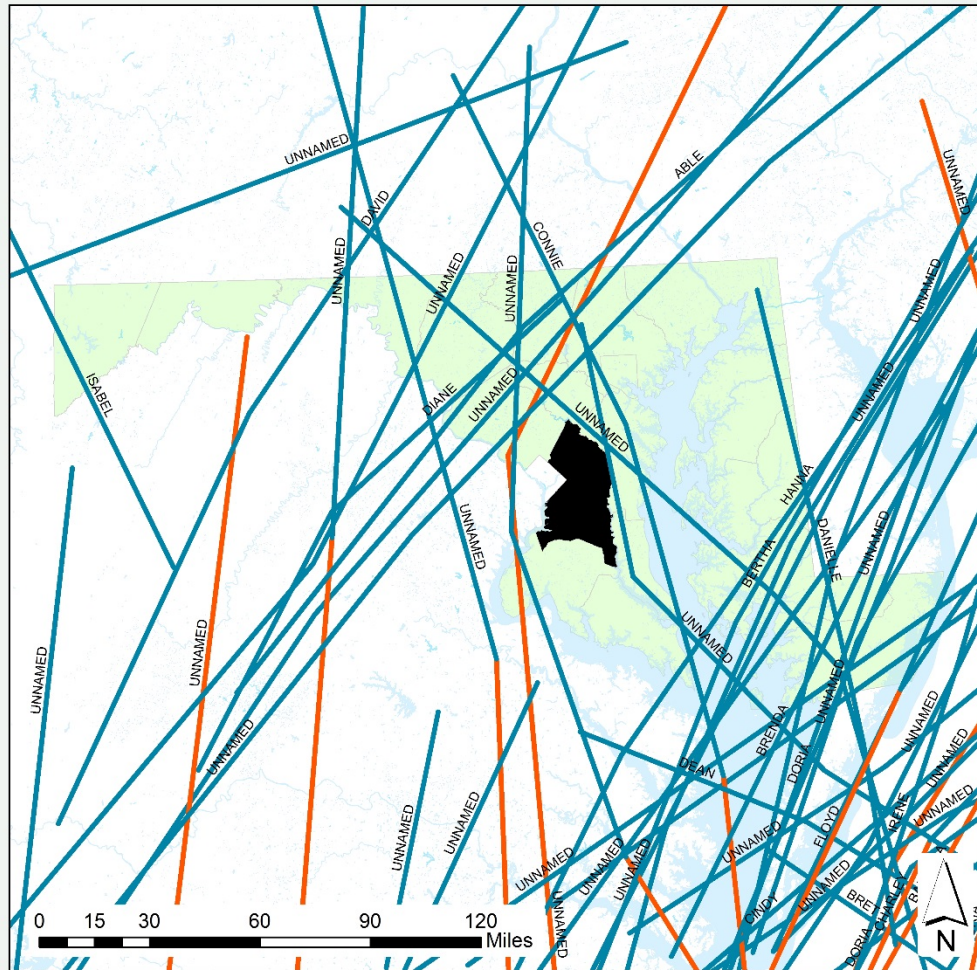
Source: Wind Vulnerability Map by Planning Area, Prince George's County and City of Laurel Maryland Hazard Mitigation Plan (2010 Update)






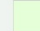


Hurricanes and Tropical Storm Risk

STORM TRACTS FOR PRINCE GEORGE'S COUNTY



Map Legend

-  TROPICAL STORM
-  CATEGORY 1 HURRICANE
-  Prince George's County
-  Maryland

Storm Tracts in and around Prince George's County and the City of Laurel.





Winter Hazard Risk

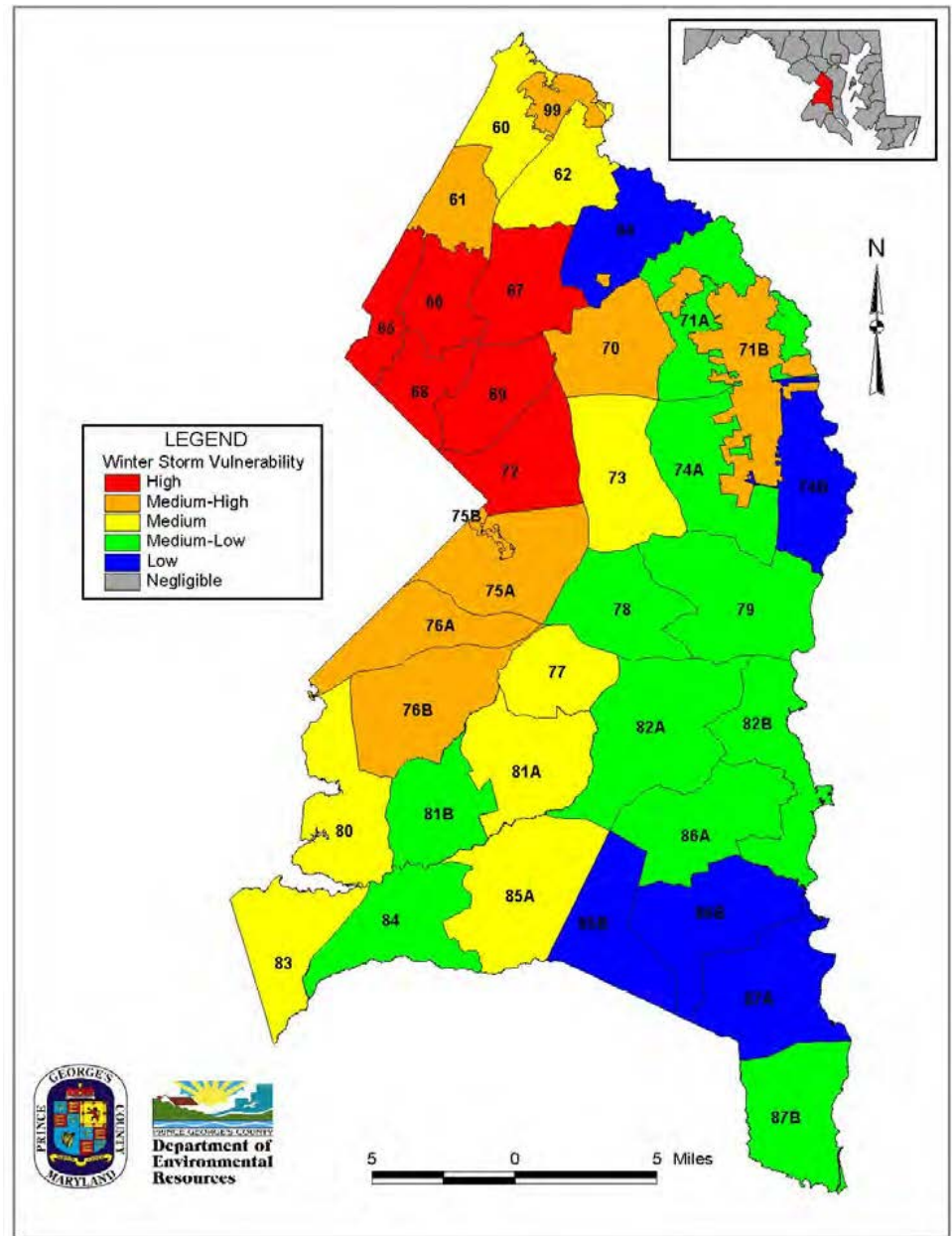
Winter Storm Hazard Risk

Winter storms are a persistent problem for Prince Georges' County and in the Washington, DC metropolitan area. Recent notable storms include:

- January 2016 - Winter Storm Jonas dropped upwards of 2 feet of snow in Maryland, causing at least one death in Prince George's County
- February 2010 – North American Blizzard “Snowmageddon” pummeled the region with 18-24 inches of snow, causing widespread travel delays, business and school closings, METRO outages and extended power loss as well as several deaths in Maryland
- December 2009 – Blizzard left Maryland, DC and Virginia with 18-24 inches of snow, causing massive travel delays and power outages

Winter Storm Hazard Vulnerability

Source: Winter Storm Vulnerability Map by Planning Area, Prince George's County and City of Laurel Maryland Hazard Mitigation Plan (2010 Update)



Wildfires 1992-2013

Political Area	Fire Size Code	Fire Description	Number of Fires
City of Laurel	--	--	--
Council District 1	A	0.25 Acres or less	1
	B	0.26 to 9.9 Acres	3
	C	10.0 to 99.9 Acres	1
Council District 2	B	0.26 to 9.9 Acres	1
Council District 3	A	0.25 Acres or less	1
	B	0.26 to 9.9 Acres	5
Council District 4	A	0.25 Acres or less	4
	B	0.26 to 9.9 Acres	11
Council District 5	B	0.26 to 9.9 Acres	2
Council District 6	A	0.25 Acres or less	1
	B	0.26 to 9.9 Acres	1
Council District 7	A	0.25 Acres or less	1
	B	0.26 to 9.9 Acres	2
Council District 8	B	0.26 to 9.9 Acres	2
	C	10.0 to 99.9 Acres	1
Council District 9	A	0.25 Acres or less	18
	B	0.26 to 9.9 Acres	26
	C	10.0 to 99.9 Acres	2
	E	300 to 999 Acres	2
Total			85

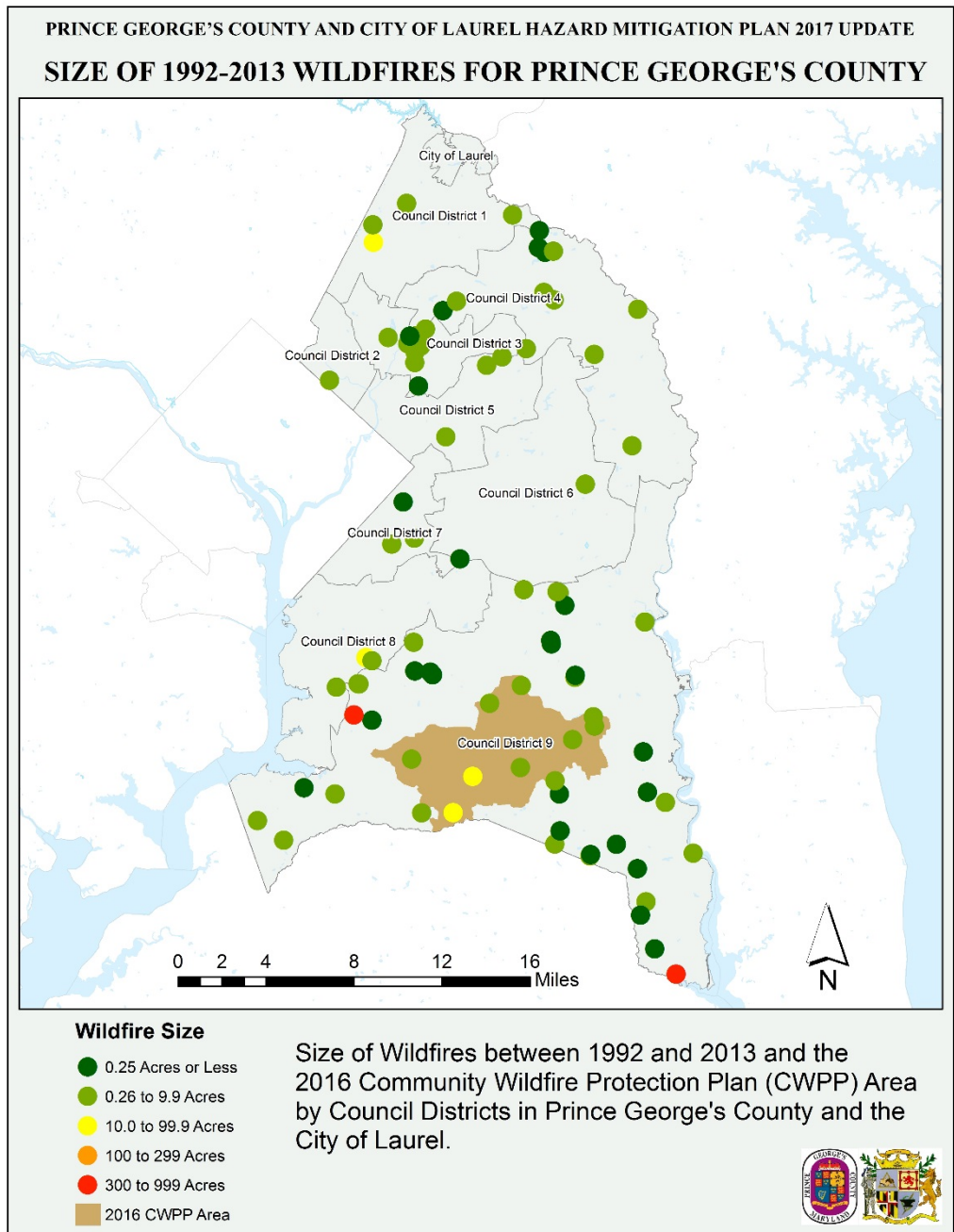
Community Wildfire Protection Plan Area Exposure

Political Area	Approximate Building Count	Approximate Building Value
Council District 9	8206	\$1,360,000,000

Wildfire Risk

- Prince George's County has an Average Wildfire Burn Recurrence Interval of 2 years (see NOTE)
- However, as shown in the map on the right, most wildfires are small and are quickly extinguished

NOTE: Burn Recurrence Interval based on analysis of LANDFIRE data Prince Georges County, MD zip code 20782 taken from the FEMA Benefit-Cost Analysis Tool – Version 5.3.0.2 (Build Date 12/22/2016)





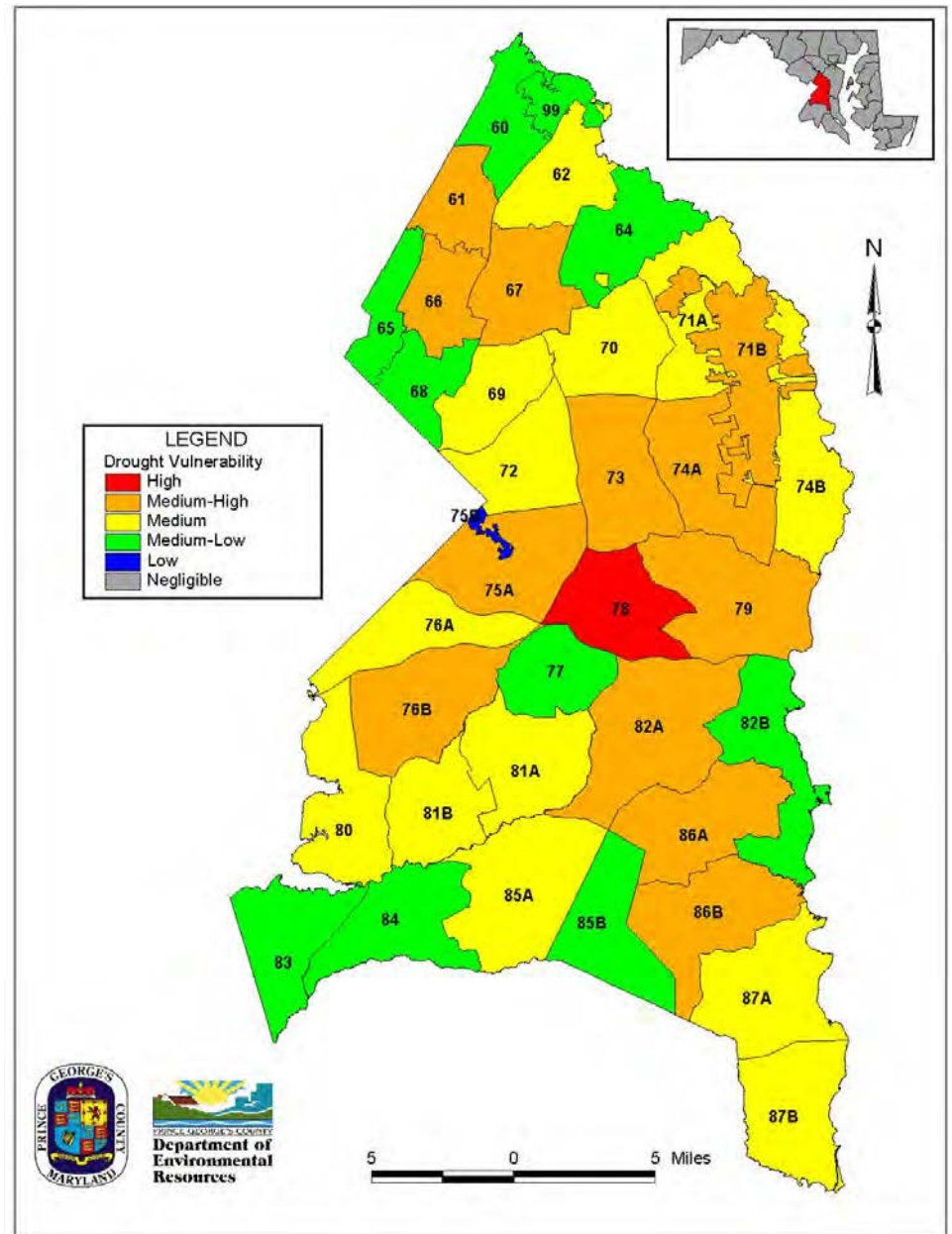
Drought Risk

Drought Categories

Category	Description	Possible Impacts
D0	Abnormally dry	Going into a drought: short-term dryness slows planting, growth of crops or pastures; fire risk above average. Coming out of a drought: some lingering water deficits; pastures or crops not fully recovered.
D1	Moderate drought	Some damage to crops, pastures; fire risk high; streams, reservoirs, or wells low; some water shortages develop or are imminent; voluntary water use restrictions requested.
D2	Severe drought	Crop or pasture losses likely; fire risk very high; water shortages common; water restrictions imposed.
D3	Extreme drought	Major crop/pasture losses; extreme fire danger; widespread water shortages or restrictions.

Drought Hazard Vulnerability

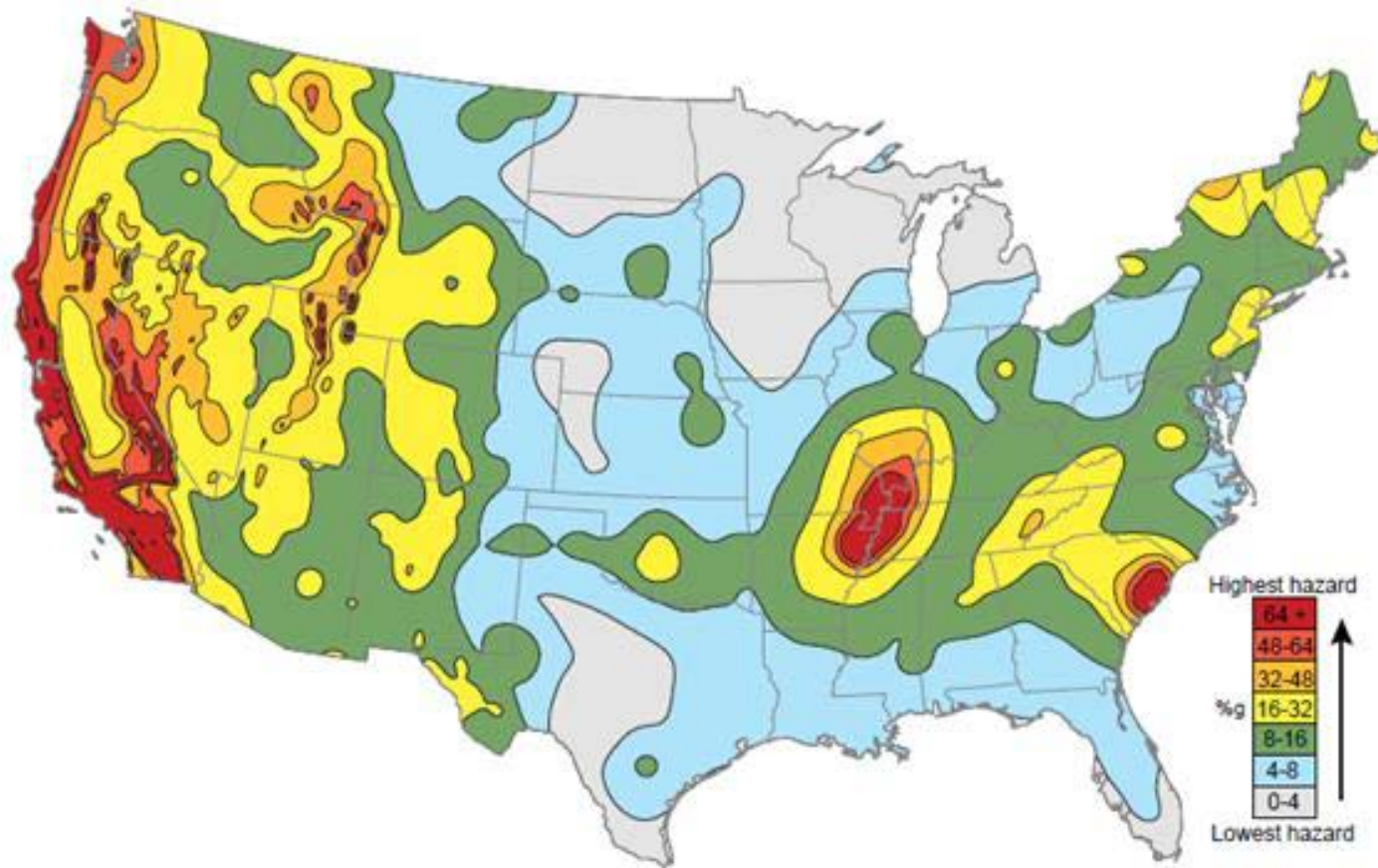
Source: Drought Vulnerability Map by Planning Area, Prince George's County and City of Laurel Maryland Hazard Mitigation Plan (2010 Update)





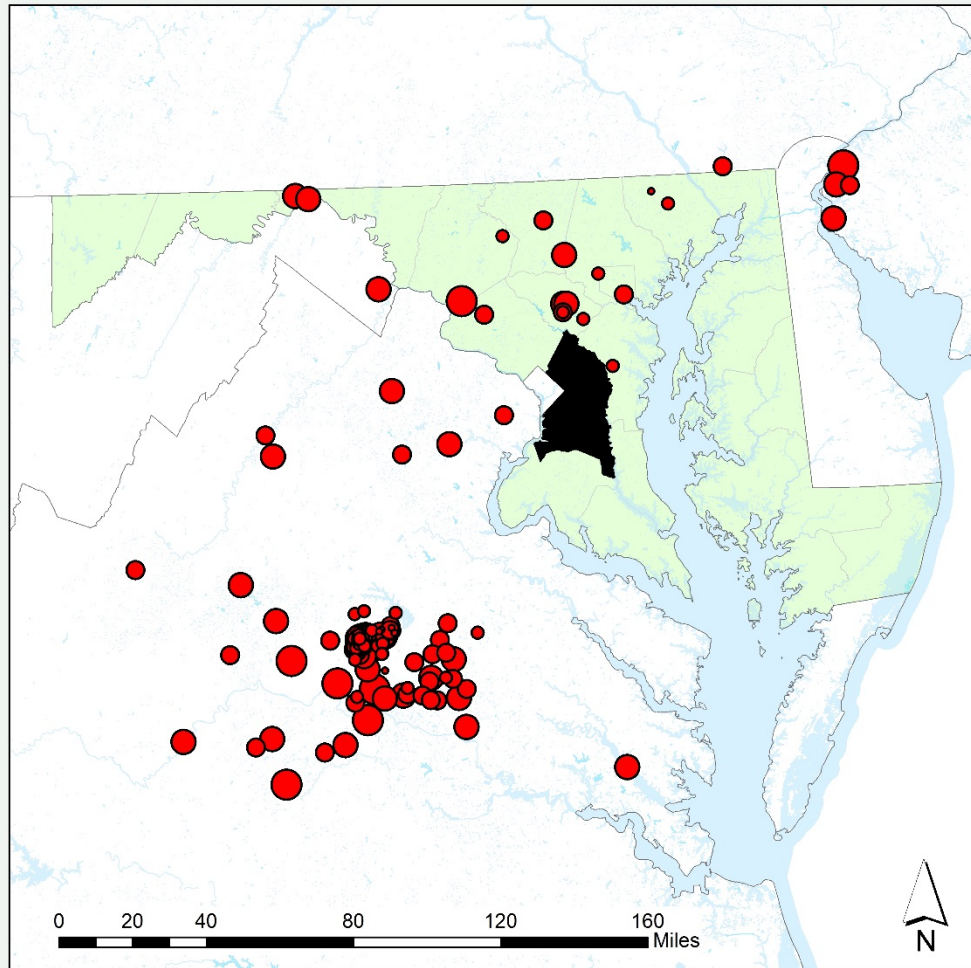
Earthquake Hazard Risk

National Earthquake Risk



Source: United States Geological Survey (USGS) Earthquake Map (based on peak ground accelerations for a 2% probability event in the next 50 years), with earthquake ground accelerations expressed as a percentage of gravity, g (32.2 ft/s²)

EARTHQUAKES IN AND AROUND PRINCE GEORGE'S COUNTY



Earthquakes by Magnitude

- | | | | |
|---|-----------|---|-----------|
| • | 0 - 1.3 | ■ | PG County |
| ● | 1.3 - 1.9 | ■ | Maryland |
| ● | 1.9 - 2.4 | | |
| ● | 2.4 - 3.4 | | |
| ● | 3.4 - 5.8 | | |

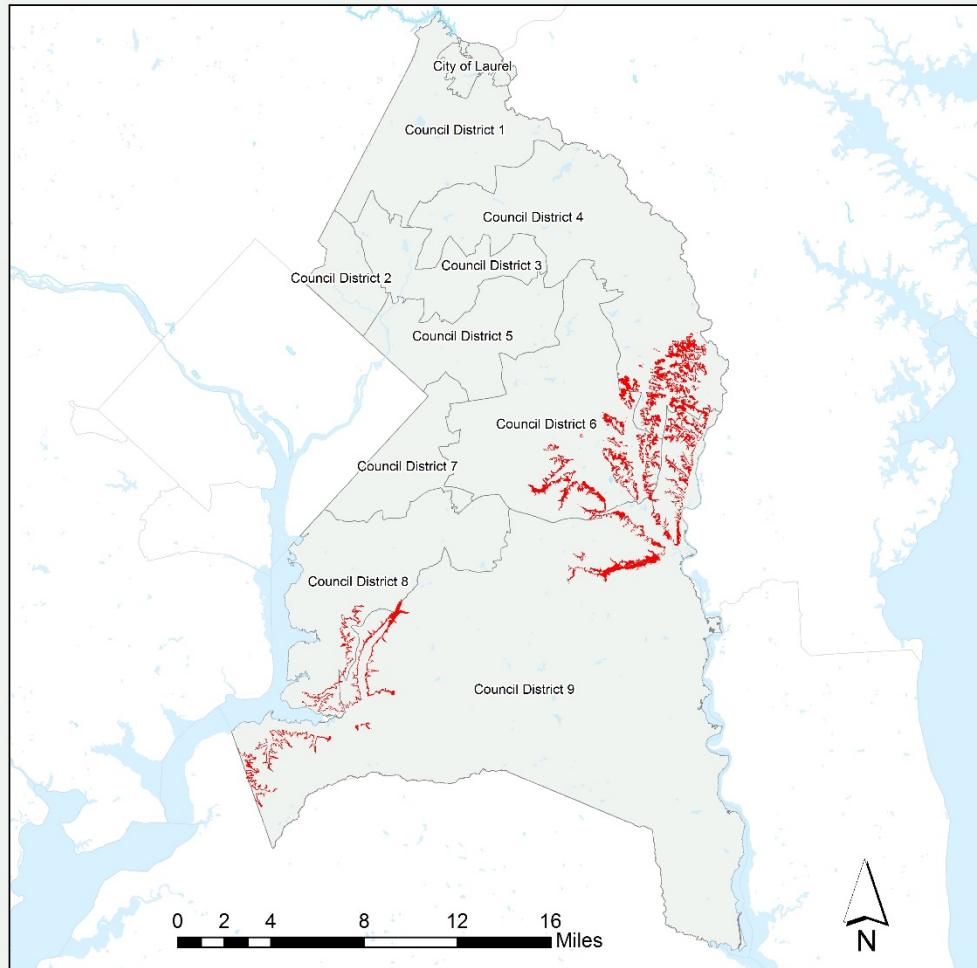
Earthquakes from 1900 - 2016 in and around Prince George's County.





Landslide Hazard Risk

PRINCE GEORGE'S COUNTY AND CITY OF LAUREL HAZARD MITIGATION PLAN 2017 UPDATE
LOCATION OF MARLBORO CLAYS IN PRINCE GEORGE'S COUNTY



Clays

 Marlboro Clays

Location of Marlboro Clays by Council Districts in Prince George's County and the City of Laurel.



Hazard Priority Ranking Criteria

Table V-1. Hazard Ranking Priority Criteria				
Probability/History	Vulnerability	Maximum Threat (Geographic Area Affected)	Warning Time	2011 Ranking
Unlikely No documented occurrence with annual probability <0.01	Negligible 1 to 10% of people or property	Isolated < 5% of community impacted	Extended Three days or more	Limited
Somewhat Likely Infrequent occurrence with at least one documented event and annual probability between 0.5 and 0.01	Limited 10 to 25% of people or property	Small 5 to 25% of community impacted	Limited 2 days	Moderate
Likely Frequent occurrence with at least 2 documented events and annual probability between 1 and 0.5	Critical 25 to 50% of people or property	Medium 25 to 50% of community impacted	Minimal 1 day	
Highly Likely Common events with annual probability >1	Catastrophic >50% of people or property	Large >50% of community impacted	No Notice < 24 hours	Significant

	State Ranking	MAC Ranking (Dec 16)	2017 HIRA Ranking
Riverine Flooding	High	High	High
Coastal Flooding	Medium – High	Low	Medium-Low
Severe Storms - Heavy Rain	High	High	High
Flood Risk - Dam Failures	High	High	Medium
Flood Risk - Levee Failures	High	N/A	Medium
Tornadoes	High	Medium - Low	High
Severe Storms - Thunderstorm Wind, Lightning, and Hail	High	N/A	Medium -High
High Winds	High	Medium - Low	Medium -High
Hurricanes/Tropical Storms	High	N/A	High
Winter Storms/Blizzards	High	High	Medium -High
Wildfire	Medium – High	Low	Medium-Low
Drought	Medium – High	Low	Medium-Low
Earthquakes	Low	Medium - Low	Medium
Landslide	Low	Low	Low
Sinkholes	Low	N/A	Low

Mitigation Goal Refresh

Prince George's County Mitigation Goal

It is the goal of Prince George's County, Maryland, to protect and improve public health, safety and welfare, and to expand livable communities by:

- *Increasing public awareness of natural hazards and risk reduction measures; and*
- *Mitigating risks due to natural hazards.*

Prince George's County/Laurel Revised HMP Goal March 10, 2017

It is the goal of Prince George's County and the City of Laurel, Maryland, to protect and improve the public health, safety, and welfare of its communities, and to expand the resiliency of livable communities by:

- Increasing public awareness of natural hazards and risk reduction measures; and*
- Mitigating risks due to natural hazards.*

2017 – 2022 Actions

- Include 2011 “Carry-forward” actions
- Actions must include:
 - Strategy/action statement
 - Responsible Department
 - Priority
 - Goals supported
 - Hazard Addressed
 - Timeframe
 - Resources – funding source, staff, etc.

Mitigation Actions

- Preventative Measures
- Property Protection
- Emergency Services
- Structural Projects
- Natural Resources Protection
- Public Information Programs

Outreach Brainstorming

Potential Project Site Visit

- Funds in budget for site visits – several days
- Project sheet can pre-position you for FEMA Hazard Mitigation Assistance Funds
- May, 2017



Next Steps

- Draft HIRA chapter comments to Deborah Mills (dmills@dewberry.com) by March 31, 2017
- 2011 Mitigation Action Status to Jillian Browning (jbrowning@dewberry.com) by March 31, 2017
- 2017 – 2022 Mitigation Actions to Jillian Browning by March 31, 2017
- Draft Plan to Prince Georges County and City of Laurel mid-April
- Project site visits in May

HIRA - Goals Mtg 3.16.2017

● Prince George's County Government ●
● Office of Emergency Management ●
Hazard Mitigation Advisory Committee

First Name	Last Name	Agency	Title	Phone Number	Email	Kick Off-Meeting	Second MTG.
Todd	Addis	Office of Information Technology	Security Manager	301-883-3351	wtaddis@co.pg.md.us	X	Emailed 3/6 & Called
Chris	Akinbobola	Department of Environment	Special Assistant	301-883-7157	caakinbobola@co.pg.md.us	X	X
William	Alexander	Prince George's County Police Department	Major	410-310-1297	waalexander@co.pg.md.us		X
Stephen	Allen, Sr.	City of Laurel	Emergency Manager	301-725-5300, ext. 2246	sallen@laurel.md.us	X	X
Jack	Brock	City of Laurel	Planning Director	301-725-5300	jbrock@laurel.md.us	X	No Response
James	Carter	Office of Emergency Management	N/A	301-352-1443	JACarter@co.pg.md.us		
Gwen	Clerkley	Department of Public Works and Transportation	Associate Director	301-499-8523	gtclerkley@co.pg.md.us	X	Email- Not able
Catherine	Escarpeta	Department of Environment	GIS Analyst	301-883-5990	crescarpeta@co.pg.md.us	X	X
Ronald	Gill	Office of Emergency Management	Director	240-619-6497	regill@co.pg.md.us	X	X
Charles	Hamby	Prince George's County Police Department	Major	301-583-7170	cehamby@co.pg.md.us		X
Dawn	Hawkins-Nixon	Department of Environment	Associate Director	301-883-5839	dhnixson@co.pg.md.us	X	X
Courtney E.	Marlette	Office of Emergency Management	Regional Planner	301-324-4453	cemariette@co.pg.md.us	X	X
Theresa	Martin	City of Laurel	GIS Analyst	301-725-5300, ext. 2214	tmartin@laurel.md.us	X	No Longer w/Laurel
Kirk	McLean	Prince George's County Police Department	Lieutenant	301-772-4740	kimclean@co.pg.md.us	X	Email- Not able
Deborah	Mills	Dewberry	Consultant	804-823-6971/804-823-6971	gtclerkley@co.pg.md.us	X	X
Joe	Perez	Prince George's County Police Department	Captain	202-957-8822	jrperez@co.pg.md.us	X	NO-email/DM
Sean	Sheffield	Prince George's County Police Department		301-772-4975			X
Vernon L.	Stinnett	Department of Public Works and Transportation	Division Chief	301-499-8556	VLStinnett@co.pg.md.us	X	X
Debbie	Tyner	Maryland-National Capital Park and Planning Commission	Deputy Director	301-699-8556	debbie.tyner@pgparks.com	X	Surgery/No Designee
Eddie	Walters	Office of Emergency Management	N/A	301-352-1442	EAWalters@co.pg.md.us		X

DJSHEFFIELD@CO.PG.MD.US
CEHAMBY@CO.PG.MD.US

✓ = here

● = spoke to this person (Courtney)

**Prince George's County
Local Emergency Planning Committee
Agency Membership List**

Committee Chairperson

Ronnie Gill –Committee Chair
TBD – Vice Chair

Agency List

Office of Homeland Security & Office of Emergency Management 7915 Anchor Street Landover, MD 20785	Police Department 7600 Barlowe Road Palmer Park, MD 20785
Fire/EMS 9201 Basil Court Largo, MD 20774	Department of the Environment 9400 Peppercorn Place Largo, MD 20774
Public Works & Transportation 9400 Peppercorn Place Largo, MD 20774	Largo Government Center 9201 Basil Court Largo, MD 20774
Health Department 9201 Basil Court Largo, MD 20774	County Council Member - (TBD) 14741 Governor Oden Bowie Drive Upper Marlboro, MD 20772
	MEMA 5401 Rue Saint Lo Drive Reisterstown, MD 21136

Non-Government & Volunteer Organizations

RACES 4910 Ashford Drive Upper Marlboro, MD 20772	Baltimore Gas & Electric (BGE) 47 State Circle Annapolis, MD 21401
Bowie Health Campus 15001 Health Center Drive Bowie, MD 20716	Washington Suburban Sanitary Commission 14501 Sweitzer Lane Laurel, MD 20707
PEPCO P.O. Box 341010 West Bethesda, MD 20827	City of Laurel Laurel Municipal Center 8103 Sandy Spring Road Laurel, MD 20707

American Red Cross
National Capital Region
8550 Arlington Boulevard
Fairfax, VA 22031

City of Bowie-City Council Member (TBD)
15901 Excalibur Road
Bowie, MD 20716

Prince George's County Public Schools
507 Largo Road
Largo, MD 20774

City of Bladensburg
4229 Edmonston Road
Bladensburg, MD20710

Sub-Committees

Administration Subcommittee
Hazardous Materials/Vulnerability Analysis Subcommittee
Community Preparedness/Public Education Subcommittee
Plan Development/Exercise Planning Subcommittee

Business Partners (contacts being made)

DRAFT

Capital Heights Day Photos





Public Works Round Table Workshop-5/23/17

- 9:00-9:05 AM Welcome
- 9:05-9:15 AM Introductions
- 9:15- 9:30 AM Ice Breaker
- 9:30- 10:15 AM Public Works – Who are we? – Gwen Clerkley, PGC -DPW&T
- 10:15-10:30 AM Break
- 10:30-11:15 AM Project Management- Shonte Eldridge , City of Baltimore
- 11:15-12 PM Media / Social Relations
- 12 – 1 PM Lunch
- 1- 1:30 PM APWA
- 1:30-1:45 PM Break
- 1:45-2:15 PM Office of Emergency Management, Courtney Mariette
- 2:15- 2:30 PM Break
- 2:30- 3:00 PM Round Table Discussion





COUNTY COUNCIL
Derrick Leon Davis
Mel Franklin
Dannielle M. Glaros
Andrea C. Harrison
Mary A. Lehman
Obie Patterson
Deni Taveras
Karen R. Toles
Todd M. Turner

A Proclamation

WHEREAS, the month of June signals the advent of hurricanes, tropical storms, tornadoes and other related severe weather occurrences including the likelihood for flooding; and

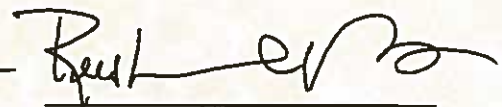
WHEREAS, the Prince George's County Department of the Environment conducted floodplan studies identifying at least 4,300 floodprone structures Countywide; and

WHEREAS, the Department of Environment is taking measures to inform local residents about the hazards of flooding; and

WHEREAS, it is important to renew public awareness of floods and flood disasters, and that local residents become aware of the potential for flooding and how to reduce the impact of a major flood.

NOW, THEREFORE, Be It Proclaimed by the Prince George's County Council and County Executive, Rushern L. Baker, III, that the month of June 2017, is declared "**Flood Awareness Month**" in Prince George's County. **FURTHER**, all citizens are encouraged to become aware of the programs and services the County offers through the Department of the Environment, the Offices of Emergency Management, and the Police and Fire/EMS Departments, which protect the community from floods and flood disasters.


DERRICK LEON DAVIS
COUNCIL CHAIRMAN


RUSHERN L. BAKER, III
COUNTY EXECUTIVE



<https://www.youtube.com/watch?v=a5H1NcMifjk>

[PG County Hazard Mitigation Plan - Public Review](#)

<http://www.princegeorgescountymd.gov/2769/Hazard-Mitigation-Plan---Draft>

All content copyright ©2016 City of Laurel, Maryland.

[Contact \(/comm/contacts-hours\)](#) · [Sitemap \(/services\)](#) · [Privacy and](#)

[Use Policy \(/policy\)](#)

www.cityoflaurel.org

Prince George's County Municipal Floodplain Management Workshop

Forest Heights Municipal Building
5508 Arapahoe Drive, Forest Heights, MD 20745

October 4, 2017

AGENDA

8:45 AM	Sign in	
9:00	Welcome, Introductions and Purpose of Workshop	Dawn Hawkins-Nixon
9:15	Overview of the National Flood Insurance Program (NFIP) <ul style="list-style-type: none">• Know Your Risk: Mapping & Studies• Insure Your Risk: Flood Insurance• Reduce Your Risk: Floodplain Management/Regulations & Mitigation Practices	Kevin Wagner & Mike Colgan
9:45	County's Floodplain Management Program <ul style="list-style-type: none">• County-designated Floodplain• Permitting and Enforcement Authority• Permitting Process • Elevation Certificates• Preserving Natural Features of the Floodplain (Tree conservation)	Mary Giles Mary Giles Rey DeGuzman & Salman Babar Mike Colgan Katina Shoulars
10:30	Break	
10:45	Community Rating System (CRS)	Dawn Hawkins-Nixon & Kevin Wagner
11:00	Hazard Mitigation/Risk Reduction	Chas Eby & Courtney Mariette
11:30	County's Stormwater Capital Improvement Program	Frank Galosi
11:45	Questions/Group Discussion	
12:00 PM	Adjourn	

Contacts and Resources

County Contacts:

Dawn Hawkins-Nixon, P.E., CFM, Associate
Director
Department of the Environment (DOE)
Sustainable Initiatives Division
301-883-5839 (o)
dhnixn@co.pg.md.us

Michael J. Colgan, Water Resources Engineer
DOE
301-883-5944 (o)
mjcolgan@co.pg.md.us

Frank L. Galosi, Section Head
DOE, Stormwater Management Division
301-883-5876 (o)
flgalosi@co.pg.md.us

Mary C. Giles, P.E., Associate Director
Department of Permitting, Inspections and
Enforcement (DPIE)
Site/Road Plan Review Division
301-636-2060 (o)
mcgiles@co.pg.md.us

Salman U. Babar
Senior Engineer, North District
Floodplain Engineer
DPIE, Site/Road Plan Review Division
301-636-2063 (o)
subabar@co.pg.md.us

Rey DeGuzman, P.E., Chief Engineer
DPIE, Site/Road Plan Review Division
301-883-5710 (o)
rsdeguzman@co.pg.md.us

Katina Shoulars, Supervisor
Environmental Planning Section

The Maryland-National Capital Park and
Planning Commission (M-NCPPC)
Prince George's County, MD
301-952-5404 (o)
katina.shoulars@ppd.mncppc.org

Ronald E. Gill, Jr., Director
Office of Emergency Management (OEM)
301-324-4400 (o)
regill@co.pg.md.us

Courtney E. Mariette, Regional Planner
Office of Homeland Security, OEM
301-324-4453 (o)
cemariette@co.pg.md.us

State Contacts:

Dave Guignet, State NFIP Coordinator
Maryland Department of the Environment
410-537-3775 (o)
dave.guignet@maryland.gov

Kevin G. Wagner, Natural Resources Planner
Maryland Department of the Environment
301-689-1495 (o), 240-362-2143 (c)
kevin.wagner@maryland.gov

Chas Eby, Director
Disaster Risk Reduction
Maryland Emergency Management Agency
410-274-6690 (c)
chas.eby@maryland.gov

Sasha Land
Maryland Coastal Training Program
Chesapeake & Coastal Service
Maryland Department of Natural Resources
410-260-8718 (o)
sasha.land@maryland.gov

Federal Contacts:

Heather Davis-Jenkins, CFM

FEMA Region III

202-262-4330 (c)

Heather.davis-jenkins@fema.dhs.gov

Richard J. Sobota, CPCU, Senior Insurance

Specialist/CRS Regional Coordinator

FEMA Region III

215-931-5514 (o)

richard.sobota@fema.dhs.gov

Amanda Gowans, CFM

ISO/CRS Specialist

ISO Community Hazard Mitigation

443-743-7993 (c)

agowans@iso.com

Websites:

Prince George's County Flood Management

www.princegeorgescountymd.gov/363/Flood-Management

Federal Emergency Management Agency

(FEMA) www.fema.gov

National Flood Insurance Program (NFIP)

www.FloodSmart.gov

FEMA Map Service Center www.msc.fema.gov

Maryland DFIRM Outreach Program & Flood

Risk Application www.mdfloodmaps.net

Prince George's County Local Emergency Planning Committee (LEPC) Quarterly Meeting: July 11, 2017



Location:

Prince George's County, Public Safety Complex, 7915 Anchor St. Landover, MD 20785

Presiding:

LEPC Chair- Ronald E. Gill, Jr., Director, Prince George's County Office of Emergency Management (OEM)

Participants:

Ronald E. Gill, Director, Prince George's County OEM, and LEPC Chair

Tony Anderson, Prince George's County OEM, Regional Planner

Brindisi Chan, Prince George's County OEM, Community Developer

Michelle Ezeofor, Prince George's County OEM, Regional Planner

Courtney Mariette, Prince George's County OEM, Regional Planner

James Morrow, Prince George's County OEM, CERT Coordinator

Eydi Reyes, Prince George's County OEM, Administrative Aide

Ernest Walker, Prince George's County, OEM, Community Outreach

Russ Strickland, Maryland Emergency Management Agency (MEMA) Executive Director, Guest Speaker

Stephen Allen, City of Laurel

Craig Black, Prince George's County Fire Department (PGFD)

Major Victoria Brock, Prince Georges County Police Department (PGPD)

Paul Carden, Red Cross

Mike Caruso, Prince George's County Public School (PGCPS)

Gwen Clerkly, Prince George's County Department of Public Works & Transportation (DPWT)

Gerald Collins, Cottage City

Lee Cornwell, City of Bowie

Capt. Kenneth Eckar, University of Maryland Police Department

Richard Goddard, Prince George's County Health Department

Gary Goldberg, Citizen

Ken Green House, Radio Amateur Civil Emergency Service (RACES)

Dawn Hawkins-Nixon, Prince George's County Department of the Environment (DoE)

Angela Holmes, Citizens Encouraging Community Revitalization (CECR)
Douglass Lindsey, Radio Amateur Civil Emergency Service (RACES)
Charles Scott, Prince George's County Department of Corrections
Isaac Truth, City of Bowie
Troy Walls, Prince George's County Public Schools (PGCPS)
Lakina Webster, Prince George's County, Office of the County Executive

Welcome & Introductions- Ronald E. Gill, Jr. Director, OEM

1. Purpose of LEPC

- a. The purpose of the Prince George's County LEPC is to enhance Prince George's County's preparedness and response to hazardous materials incidents by involving the government, private business, nonprofit organizations, and citizens in planning and preparing for such an incident.
- b. Background of LEPC in the State of Maryland and Prince George's County was discussed.
- c. LEPC Mission/Vision Statement

LEPC Updates- Ronald E. Gill, Jr. Director, OEM

1. Working on rebranding LEPC, vision and mission statement

- a. Are there any proposed new mission and vision statements?
- b. There will be voting on the new statement in the future.

2. Role of the State in Prince George's County LEPC

- a. The State helps enforce the Federal regulations.

Guest Speaker: Russ Strickland, Executive Director, MEMA

1. LEPC attendance was very impressive.

- a. 28 members of the community and representatives of the State and County government were present.

2. Overview of LEPC in the State of Maryland and State interaction with the Prince George's County LEPC - work is done thru information/resource sharing and collaboration.

3. Planning should be comprehensive, statewide efficient and effective.

4. Emergency Management current trends include: Planning, Training & Exercise and the Opioid Crisis.

5. The State helps to regulate and enforce Federal regulations:

- a. State Emergency Response Commission (SERC) functionality is evolving and re-establishing requirements at the local level.
- b. Working with the HazMat grant process and working with community groups to address hazardous material concerns.

- c. Questions and Answer Session.

Opioid Intervention Team (OIT) - Courtney Mariette (OEM); Richard Goddard (Health Department)

1. OHS/OEM Courtney Mariette

- a. OEM heads the Prince George's County Opioid Intervention Team -which is a consortium of County agencies that determine how best to fight the heroin and opioid epidemic, and seek to expand on current prevention, enforcement, and treatment efforts.
- b. Major Brock (Prince George's County Police Department) discussed the Police Department collection services for unused drugs/medications from citizens in the community in support to the Opioid Intervention Team.

OEM Planning Update- Michelle Ezeofor

1. Regional Planning

- a. OEM 2016-2017 completed plans include: the Severe Weather Plan, the Hazard Mitigation Plan, the Fixed Nuclear Plan, and an update to the Emergency Operations Plan.
- b. A final list of Plans will be presented to the LEPC during the fall meeting. County is transitioning to electronic plans submission, specifically, Continuity of Operations Plans (COOP) from all County agencies.

OEM Training Update- Courtney Mariette for Roland Berg

1. Training Resources

- a. OEM hosted Multi-Year Training and Exercise Plan (MYTEP) – training for County Employees.
- b. Hosting the Rapid Assessment workshop and Disaster & Recovery course in August.
- c. Hosting First Aid/AED Classes.
- d. Participating in the Calvert Cliffs Exercise.
- e. OEM classes are listed in the Emergency Management section of the Prince George's County website.
- f. OEM Staffer Ernest Walker - Community Outreach Liaison – shared an overview of community based initiatives, to include – Community Emergency Response (CERT) classes, First Aid/AED training, and active shooter.
- g. Prince George's County will be hosting the National Capital Region Community Emergency Response Team Conference (CERTCON) a two day conference on September 23-24, 2017 at Flowers High School in Springdale, Maryland.

Health Department Update- Richard Goddard

1. Initiatives in progress:

- a. Opioid Epidemic in the County; Department of Behavioral Health Division meets monthly to discuss the opioid crisis efforts and public outreach.
- a. Zika Epidemic outreach efforts have been one of main programs.
- b. Currently working on Continuity of Operations (COOP) Plans with flow chart.

Department of the Environment (DoE) - Dawn Hawkins- Nixon

1. DoE Sustainability Division:

- a. FEMA Flood insurance information - residents need to purchase flood insurance.
- b. Department of Permitting and Inspections and Enforcement are always identifying flood prone areas.
- c. Working on Hazard Mitigation Plan every 5 years, this information helps the County apply for grant funding.
- d. Monitoring cameras of 5 high hazard dams. Working on updating flood plans for those dams.

Fire and EMS HazMat Update - Craig Black:

1. Reported Spills & Leaks:

- a. Craig Black is the record keeper and reports under Title 3 of the Superfund Amendments and Reauthorization Act (SARA), and the Emergency Planning & community Right-to-Know (EPCRA)
- b. Currently 170 facilities meeting HazMat thresholds have reported to our LEPC.

Other Agencies

1. **Prince George's County Public Schools (PGCPS):** Mr. Mike Caruso shared an overview of the Prince George's County Homeland Security Program. This program is an effort between OHS/OEM and PGCPS.
2. **Radio Amateur Civil Emergency Service (RACES):** Asked about the County participation in the Communication program Interoperability cell phone (First net) a decision will be made probably in September.

New Business:

1. Working to rebrand the Mission and Vision statement.
2. Supporting School initiative thru Prince George's County OHS Program.
3. First Responder Network Authority (FirstNet) program- Maryland State is reviewing draft created by AT&T to have this program available in the State
4. Tour of the Prince George's County Public Safety Complex and Emergency Operation Center (EOC).

Moving Forward:

Next meeting date: TBD



Prince George's County Office of Emergency Management added 9 new photos. ...

Posted by Cara Howard

October 19, 2016 · 

A few photos from the "Meet & Greet with Law Enforcement & First Responders" with the disability community that was held on Friday, October 7th, 2016. Preparedness resources were distributed to over 230 individuals and families.

For preparedness information regarding in... [See More](#)



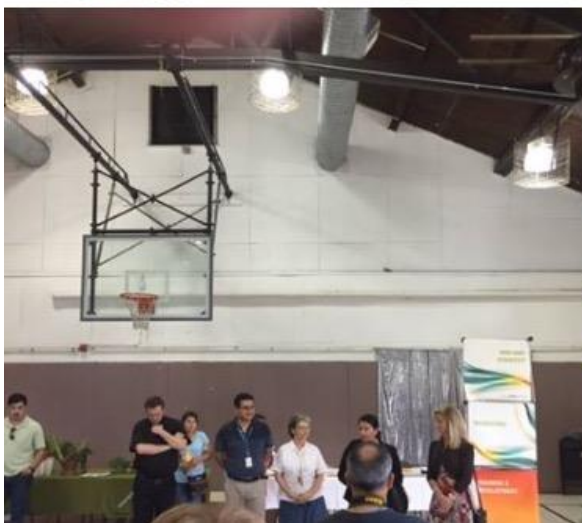


Emergency Management added 3 new photos.

Posted by Cara Howard

October 21, 2016 · 🌐

Yesterday, OEM was at St. Bernard Church in Riverdale participating in a job fair with various County agencies. Preparedness and informational resources were distributed to over 130 individuals and families.





Prince George's County Office of Emergency Management added 9 new photos.



Posted by Cara Howard

October 21, 2016 · 

Our office participated in Prince George's County Department of Public Works and Transportation's Snow Summits this past week. Three summits were held in various locations throughout the County for residents. The upcoming snow season is just around the corner...start preparing now!

... [See More](#)





Emergency Management · 3/28/17



OEM, in collaboration with CERT members, provided training to local Cub Scouts this past weekend #preparedness



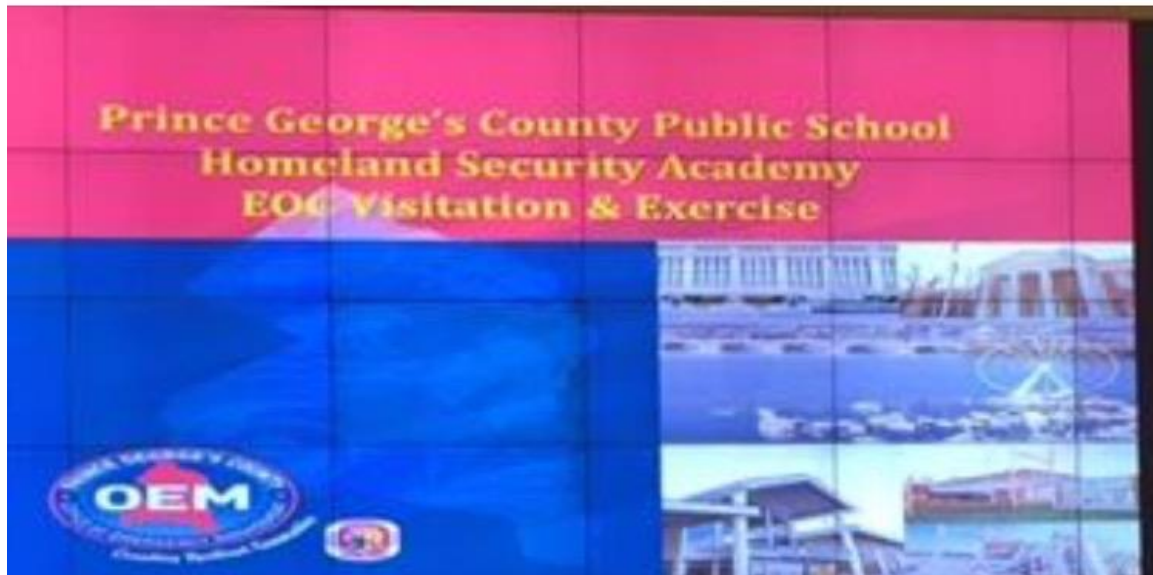


Prince George's County Office of Emergency Management added 3 new photos.



Posted by
April 11 · 🌐

The Prince George's County Office of Emergency Management hosted an EOC Visitation and Exercise to over 40 students of the Prince George's County Public Schools-Homeland Security Academy. Special thanks to the faculty and students of Park Dale High School for their participation. **#preparedness**



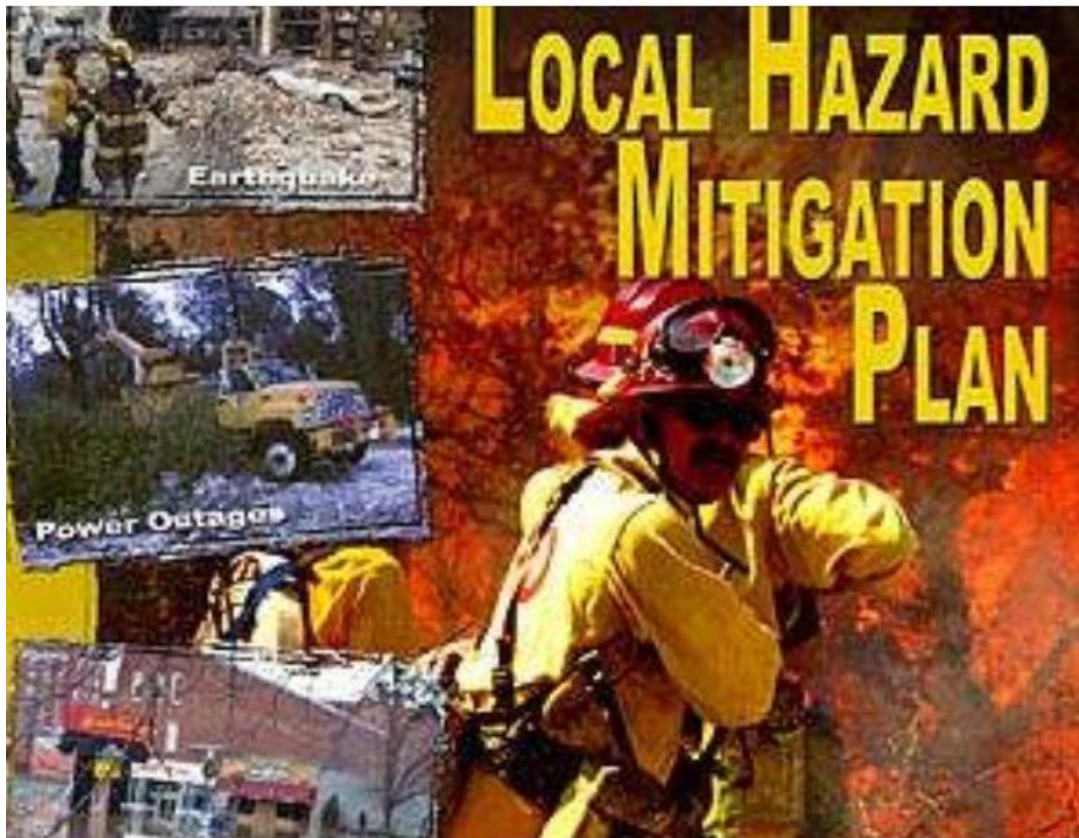


Prince George's County Office of Emergency Management



Posted by
July 21 · 🌐

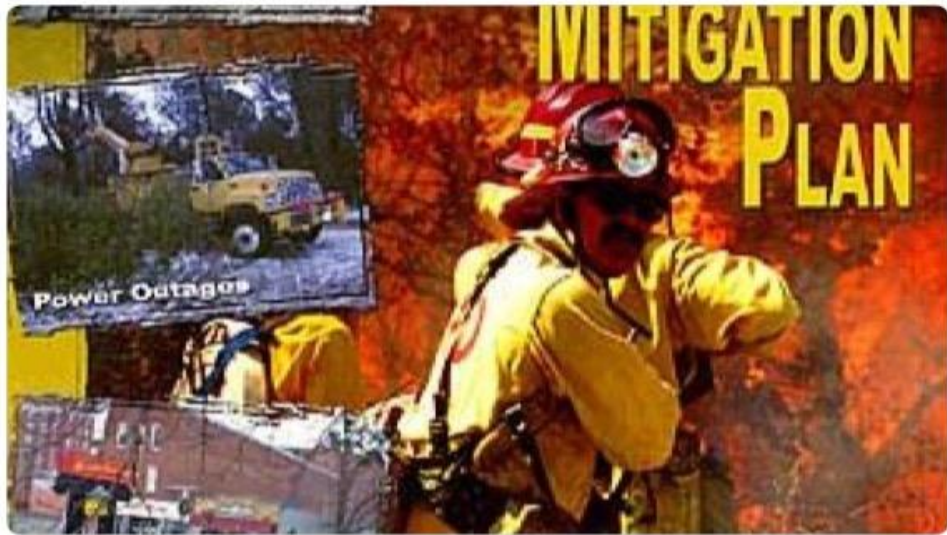
The Prince George's County - City of Laurel Multi-Jurisdictional Hazard Mitigation Plan 2017 Update draft is available for public inspection and comments. Any questions or comments should be sent to Courtney Mariette at cemariette@co.pg.md.us .
<http://www.princegeorgescountymd.gov/2769/Hazard-Mitigation-Plan---Draft>





Emergency Management · 7/21/17 ▼

Our local Hazard Mitigation Plan 2017 Update draft is available for public inspection and comments. Click link. princegeorgescountymd.gov/2769/Hazard-Mi...



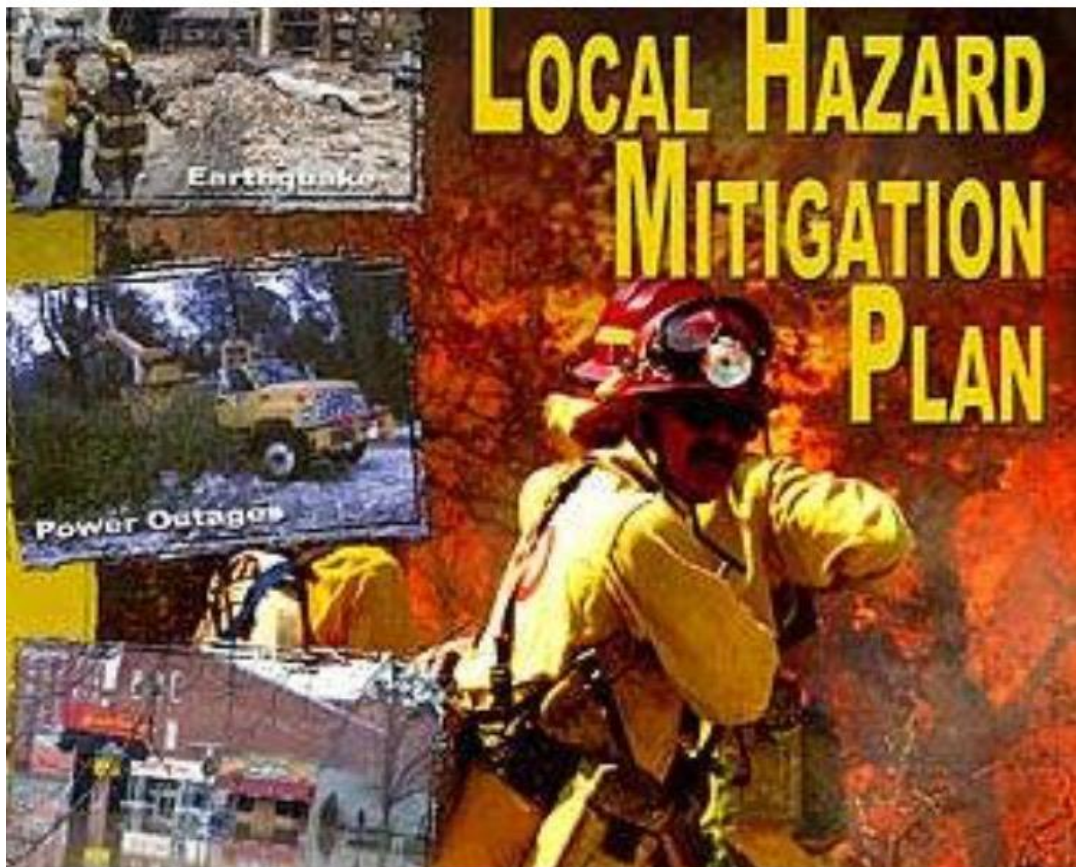


Prince George's County Office of Emergency Management



Posted by
July 27 · 🌐

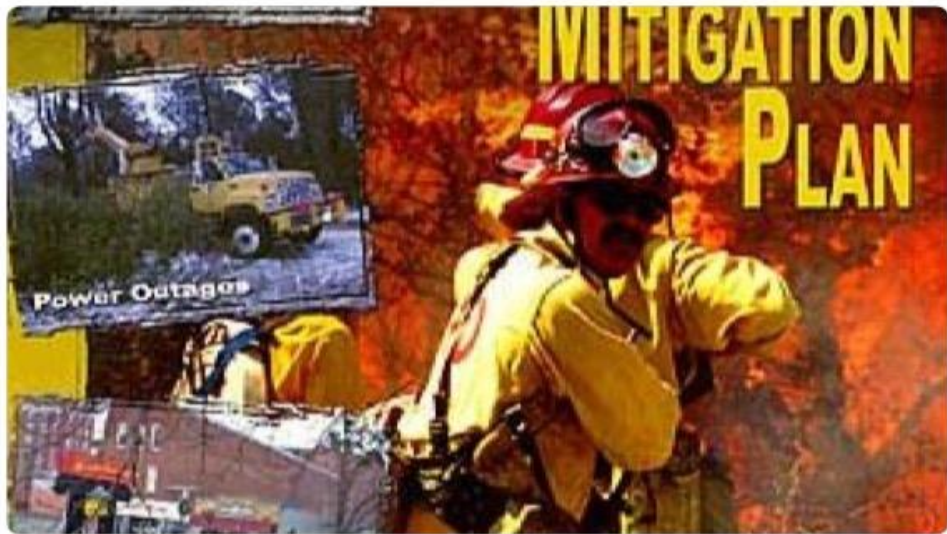
The Prince George's County - City of Laurel Multi-Jurisdictional Hazard Mitigation Plan 2017 Update draft is available for public inspection and comments. Any questions or comments should be sent to Courtney Mariette at cemariette@co.pg.md.us . <http://www.princegeorgescountymd.gov/2769/Hazard-Mitigation-Plan---Draft>





Emergency Management · 7/27/17 ▼

Our local Hazard Mitigation Plan 2017 Update draft is available for public inspection and comments. Click link. princegeorgescountymd.gov/2769/Hazard-Mi...





Find what you need...



About Us

Emergency Operations Center

Local Emergency Planning
Committee

Training & Exercise

Preparedness Center

Hazard Mitigation Plan - Draft

Home > Government > County Government > Departments & Offices > Public Safety > Homeland Security > About Us > Divisions > Emergency Management > Hazard Mitigation Plan - Draft

Hazard Mitigation Plan - Draft

The Prince George's County - City of Laurel Multi-Jurisdictional Hazard Mitigation Plan 2017 Update draft is available for public inspection and comments. Any questions or comments should be sent to Courtney Mariette at cemariette@co.pg.md.us.

Click on the link below to download the plan

- [Prince Georges County Hazard Mitigation_Draft_Plan](#)
- [Prince Georges County Hazard Mitigation Draft Plan Appendices](#)