

ITEM:

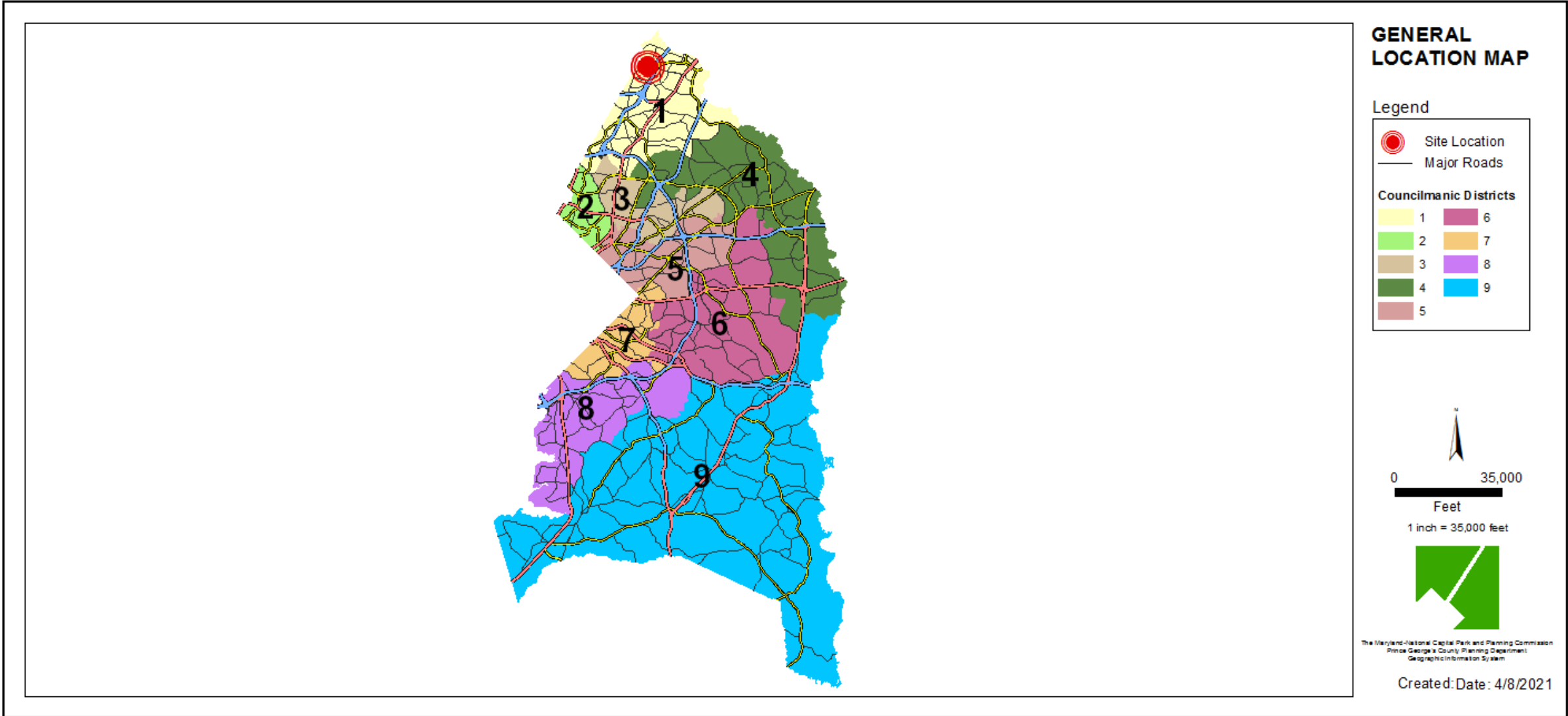
CASE: CDP-8304-02

15151 SWEITZER LANE PROPERTY

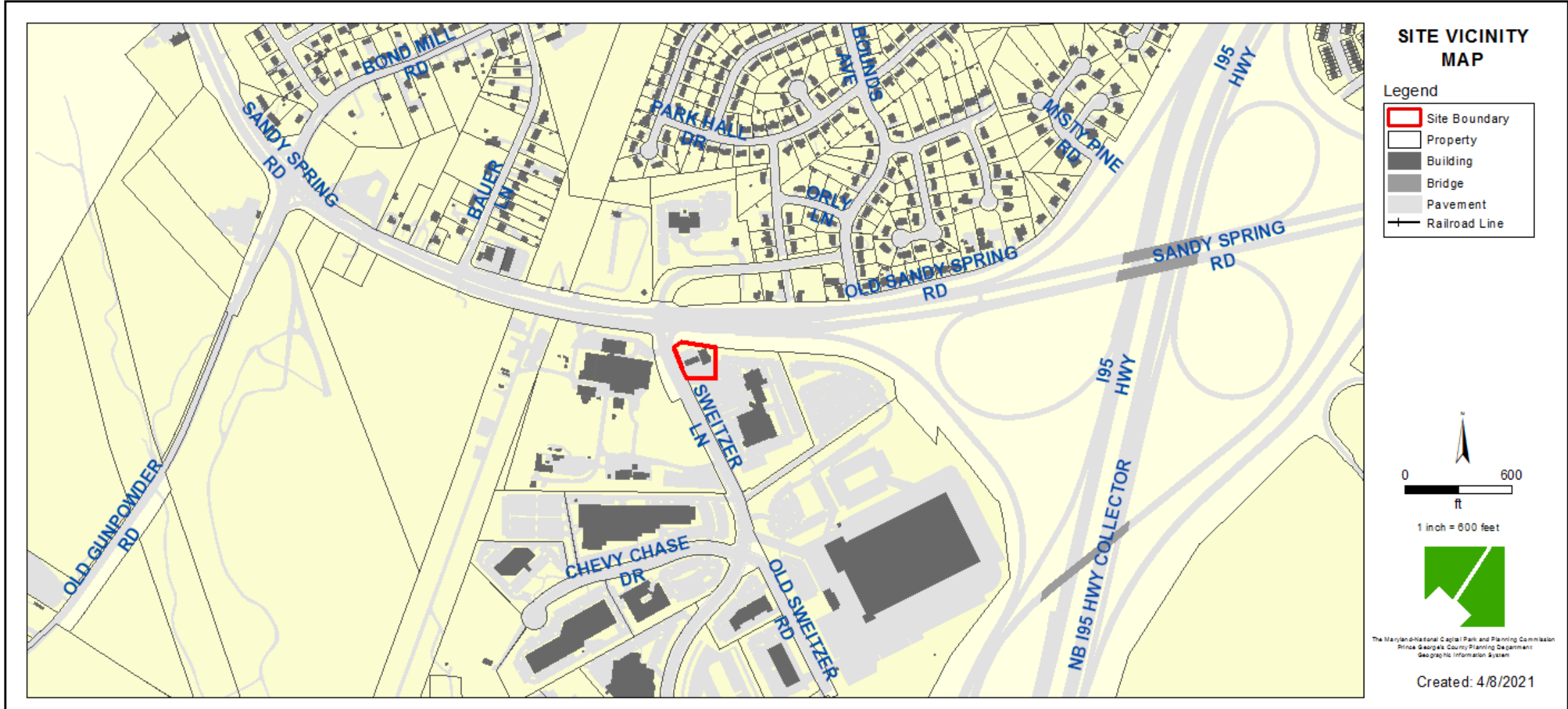
THE PRINCE GEORGE'S COUNTY PLANNING DEPARTMENT



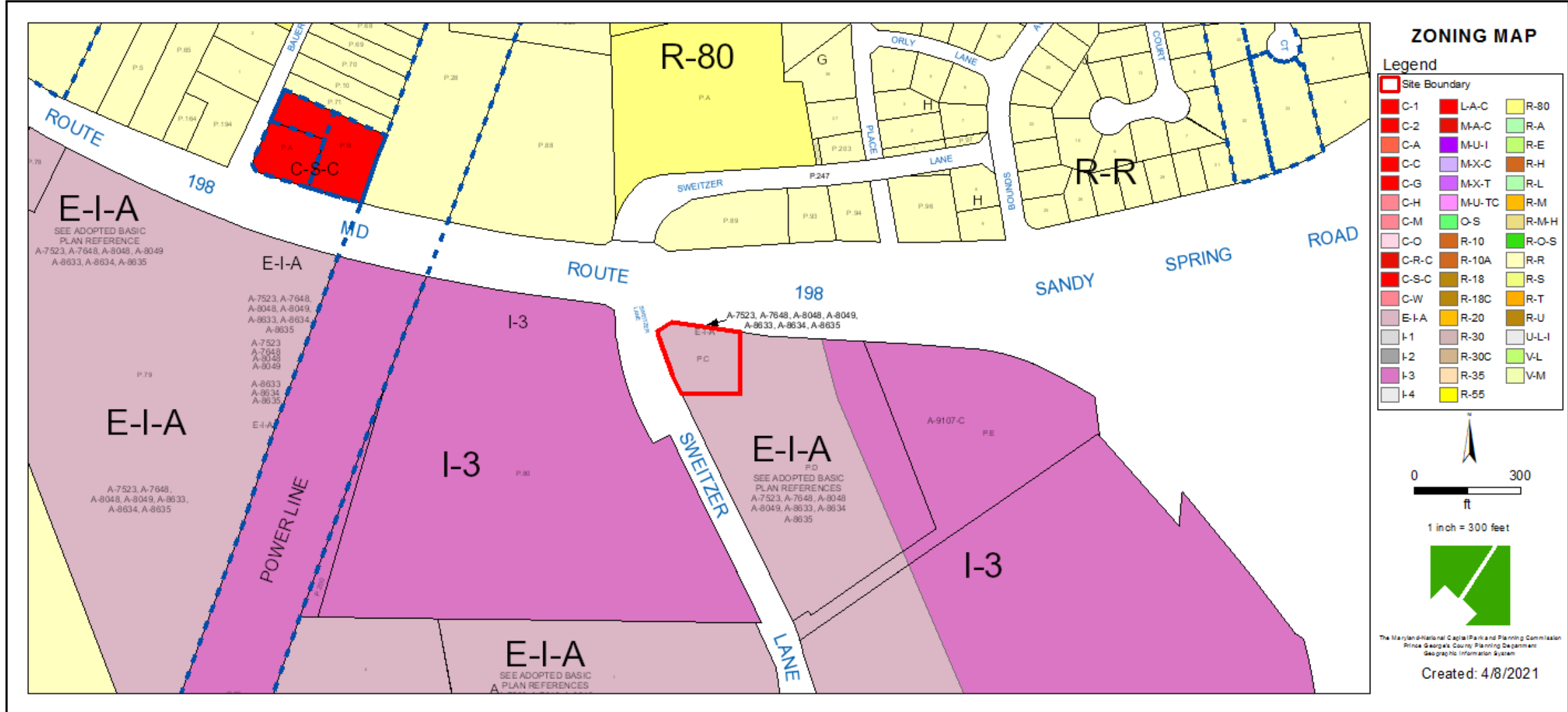
GENERAL LOCATION MAP



SITE VICINITY



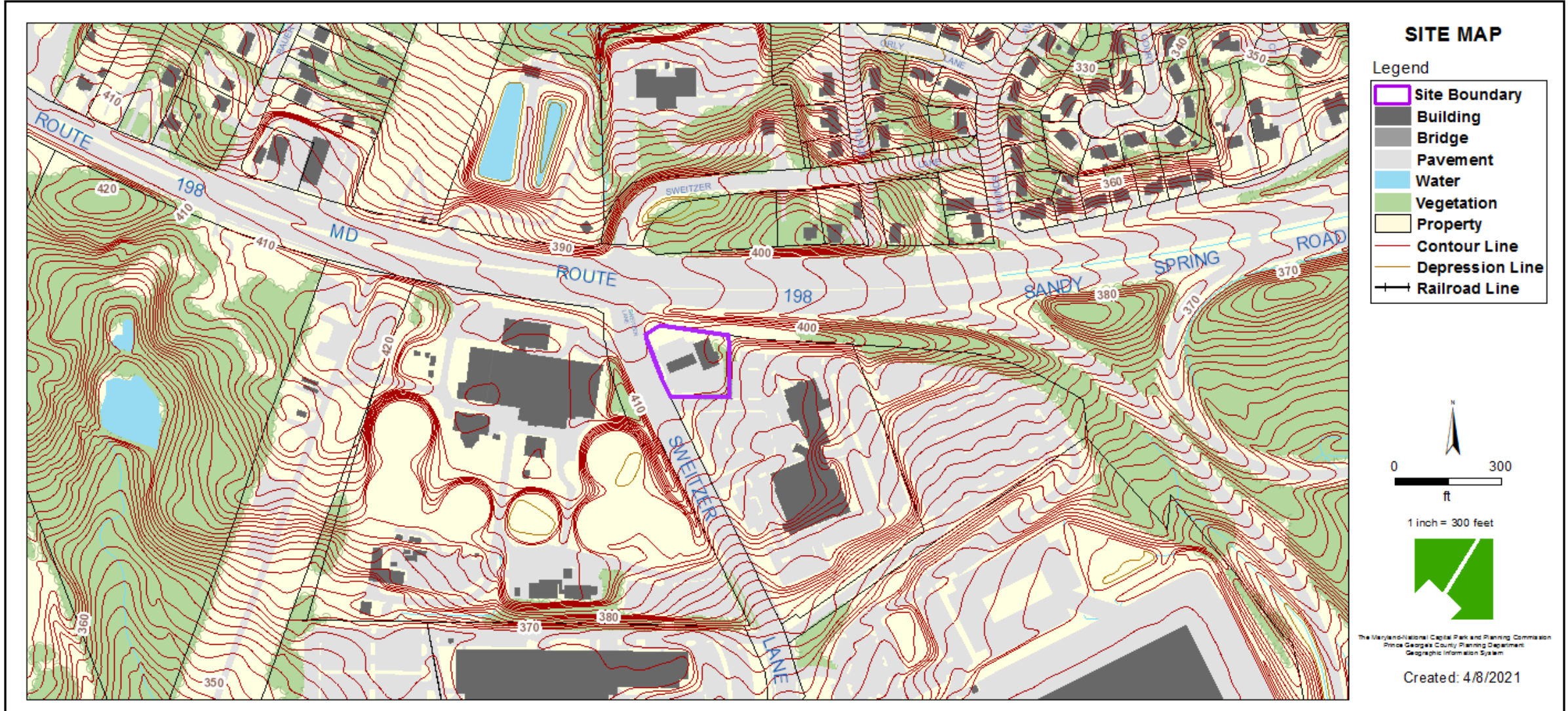
ZONING MAP



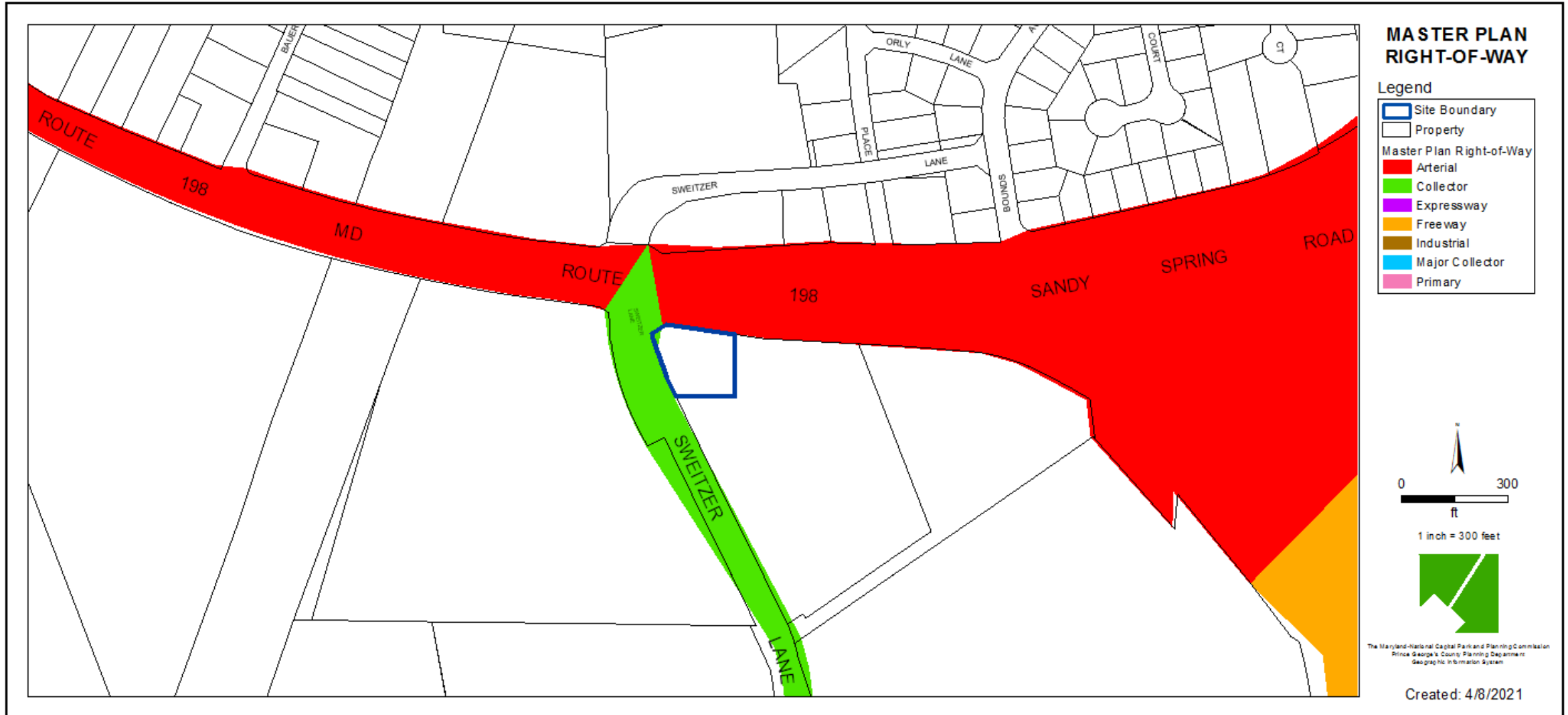
AERIAL MAP



SITE MAP



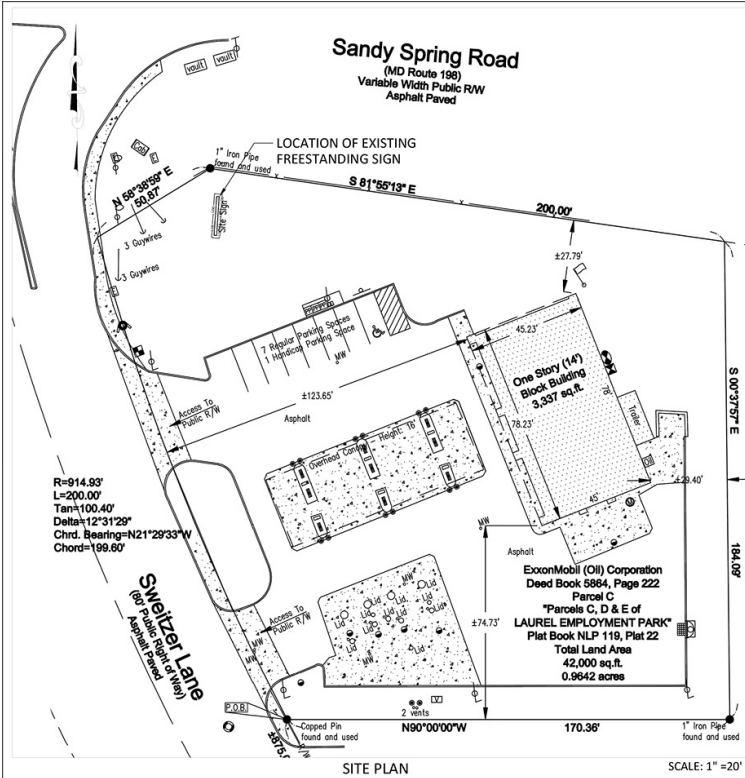
MASTER PLAN RIGHT-OF-WAY MAP



BIRD'S-EYE VIEW WITH APPROXIMATE SITE BOUNDARY OUTLINED



SIGN PLAN



SITE PLAN SCALE: 1" = 20'

SCOPE OF WORK:

- THIS PLAN PROPOSES TO REPLACE THE EXISTING FREESTANDING SIGN WITH NEW ONE.
- THE LOCATION OF EXISTING FREESTANDING SIGN IS APPROVED PER SDP-8303, SDP-8303-01, SDP-8303-02 & SDP-8303-03

LIMIT OF DISTURBANCE(LOD):

LOD = 50 SF APPROX.

FREESTANDING SIGNAGE AREA (PID):

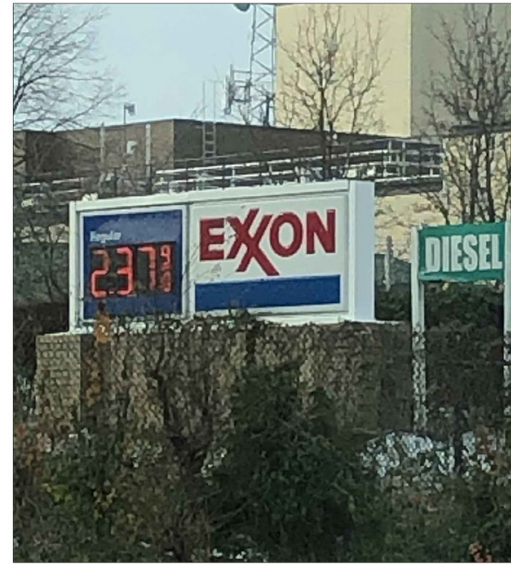
- PROPOSED FREESTANDING SIGN AREA:**

FREESTANDING SIGN HEIGHT = 25 FT

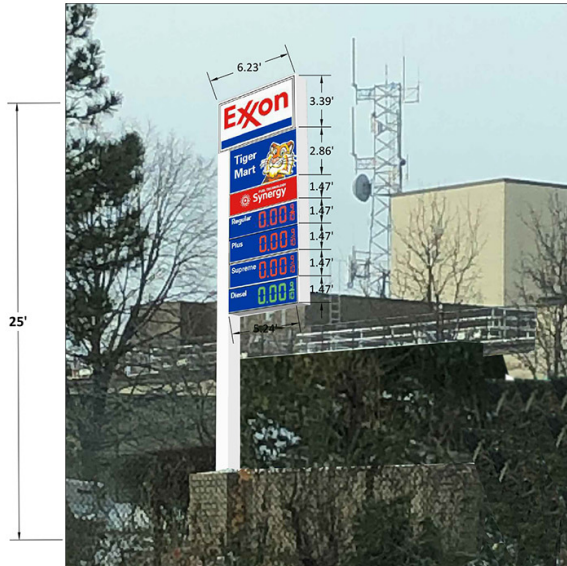
FREESTANDING SIGN AREA = (EXXON ID + TIGER MART + SYNERGY SIGN) = 21.12 + 14.98 + 7.70 = 43.8 SQ.FT (SAY 44 SQ.FT)

GASOLINE PRICE AREA = (REGULAR + PLUS + SUPREME + DIESEL) = 7.70+7.70+7.70+7.70 = 30.8 SQ.FT (SAY 32 SQ.FT) < 50 SQ.FT

TOTAL AREA = FREESTANDING SIGN AREA + GASOLINE PRICE AREA = 44 + 32 = 76 SQ.FT



EXISTING FREESTANDING SIGN



PROPOSED FREESTANDING SIGN

CIVIL ENGINEERS:



9506B LEE HWY,
FAIRFAX, VA 22031
Phone: (571) 249-3448
Fax : (703) 940-2280
www.plan-source.com
bprakash@plan-source.com



I HEREBY CERTIFY THAT THESE DOCUMENTS WERE PREPARED OR APPROVED BY ME, AND THAT I AM A FULLY LICENSED PROFESSIONAL ENGINEER UNDER THE LAWS OF THE STATE OF MARYLAND, LICENSE NO 20000, EXPIRATION DATE APRIL 01, 2023.

No.	DATE:	REVISIONS

No.	DATE:	SUBMISSIONS

PROJECT INFORMATION:
15151 SWEITZER LN
LAUREL, MD 20707

OWNER'S NAME:
GTY MD LEASING INC
SUITE 110
TWO JERICO PLAZA
JERICO, NY 11753

DRAWING TITLE:
FREE STANDING SIGN PLAN

AREA: 41,992 SF
0.964 AC

SCALE: NTS

PROJECT MANAGER:
BP

DRAWN BY: GSD
DATE: APRIL 2021

CHECKED BY: YO
TAX MAP: 0005-00C2-0000

THIS DESIGN IS COPYRIGHTED AND SHARING IS PROTECTED UNDER THE LAWS OF THE UNITED STATES OF AMERICA. ANY UNAUTHORIZED USE OF THIS DOCUMENT WITHOUT WRITTEN CONSENT OF THE PLAN SOURCE, INC. IS PROHIBITED.

DRAWING NO.
4 OF 5



THE DEVELOPMENT REVIEW DIVISION

SIGN DETAILS

FRONT ELEVATION
SCALE: 1/2" = 1'-0"

FOUNDATION DETAIL
SCALE: 1/2" = 1'-0"

MOUNTING COLUMN BASE PLATE DETAIL

EXXON DRAWING SPECIFICATIONS

MODULAR CABINET CONSTRUCTION

DESIGN WINDLOAD: 35 POUNDS PER SQUARE FOOT

AREA: EXXON 21.2 SQUARE FEET JOINT VENTURE 53.5 SQUARE FEET COLUMN 25.0 SQUARE FEET

TOP HEADER CABINETS: EXXON 6.23' X 3.39' X 1' DEEP

CABINET IS FABRICATED OF EXTRUDED ALUMINUM SECTIONS 12" WIDE X .125 WALL THICKNESS FULL WIRE-WELDED FOR EXCLUSION OF MOISTURE FABRICATED STEEL SHEET AND TUBE SECTIONS FOR STRUCTURAL SUPPORT TO MEET WIND LOADING REQUIREMENTS

HINGED FACE PANEL BOTH SIDES FOR EASY ACCESS TO ELECTRICAL COMPONENTS (BALLASTS, LAMPS AND ROUTINE MAINTENANCE)

.150 THICK THERMO FORMED FACE PANELS LOGO COPY DISPLAYED ON WHITE ILLUMINATED BACKGROUND.

APPROXIMATE WEIGHT - EXXON CABINET 175 POUNDS

TOTAL SQUARE FEET INCLUDING COLUMN EXXON: 99.7 SQUARE FEET

JOINT VENTURE AND FUEL DISPLAY CABINET: CABINET SIZE: 10.21' X 5.24' X 1' DEEP

CABINET IS FABRICATED OF EXTRUDED ALUMINUM ENCLOSURE SECTIONS 12" WIDE X .125 WALL THICKNESS WITH INTERNAL ELECTRICAL WIRING RACEWAYS FOR STRUCTURAL INTEGRITY FULL WIRE-WELDED FOR EXCLUSION OF MOISTURE.

INTERNAL CANTILEVER SUPPORT FRAME TO MEET WIND LOADING CONDITIONS.

LIGHTING PACKAGE IS DESIGNED FOR EVEN ILLUMINATION REGARDLESS OF PLACEMENT OF DISPLAY PANELS.

.150 THICK, SECOND SURFACE SCREENED FLAT FACE PANELS.

SLIDE FACE PANELS FOR EASY ACCESS TO LAMPS AND BALLASTS FOR MAINTENANCE.

FRONT ACCESS TO CHANGEABLE PLACARDS TO UPDATE FUEL PRICING.

FONT, STORAGE BOX AND CHANGER ARM PROVIDED

EASY INTERCHANGEABLE AUXILIARY MESSAGE PANELS TO SUIT SERVICES OF LOCATION.

APPROXIMATE WEIGHT - JOINT VENTURE 600 POUNDS

DISPLAY COLOR SCHEME: ALL GRAPHICS AND BACKGROUND COLORS OF DISPLAY PANELS ARE PER APPROVED CUSTOMER "MASTER ART"

ALL CABINETS, WHERE REQUIRED, ARE WIRE-WELDED AND GASKETED FOR EXCLUSION OF MOISTURE.

ALL FABRICATION WELDERS ARE CERTIFIED.

ALL DISPLAYS ARE BUILT IN ACCORDANCE TO U/L SPECIFICATION 48 AND BEAR THEIR LABEL.

INSTALLATION OF SIZE AND SHAPE OF CONCRETE FOUNDATIONS AND WILL VARY DUE TO LOCAL SOIL CONDITIONS AND CONSTRUCTION CODES ON A SITE TO SITE BASIS.

APPROXIMATE TOTAL WEIGHT 2000 POUNDS.

TOTAL ELECTRICAL SERVICE FOR BOTH INSTALLATIONS (ESSO AND EXXON) 16 TOTAL AMPS 120 VOLTS 60 HERTZ.

ALL EXPOSED SURFACES OF SUPPORT COLUMN AND CABINET TO BE FINISH COATED EGGSHELL WHITE PER APPROVED COLOR SAMPLE.

CIVIL ENGINEERS:

TPS
THE PLAN SOURCE
BY AN INDEPENDENT ENGINEER

9506B LEE HWY.
FAIRFAX, VA 22031
Phone: (571) 249-3448
Fax : (703) 940-2280
www.plan-source.com
bprakash@plan-source.com

I HEREBY CERTIFY THAT THESE DOCUMENTS WERE PREPARED OR APPROVED BY ME, AND THAT I AM A DULY LICENSED PROFESSIONAL ENGINEER UNDER THE LAWS OF THE STATE OF MARYLAND, LICENSE NO.20000, EXPIRATION DATE: APRIL 8TH, 2022.

No.	DATE	REVISIONS

No.	DATE	SUBMISSIONS

PROJECT INFORMATION:
15151 SWEITZER LN
LAUREL, MD 20707

OWNER'S NAME:
GTU MD LEASING INC
SUITE 110
TWO JERICO PLAZA
JERICHO, NY 11753

DRAWING TITLE:

SIGN DETAILS

AREA: 41,993 SF
0.964 AC

SCALE: NTS

PROJECT MANAGER:
BP

DRAWN BY: HC	DATE: APRIL 2020
CHECKED BY: BP	TAX MAP: 0005-00C2-0000

THIS DESIGN IS COPYRIGHTED AND DRAWING NO. PROTECTED UNDER THE LAWS OF THE UNITED STATES OF AMERICA. ANY UNAUTHORIZED USE OF THIS DOCUMENT WITHOUT WRITTEN CONSENT OF THE PLAN SOURCE.

DRAWING NO.
5 OF 5

