

ITEM:

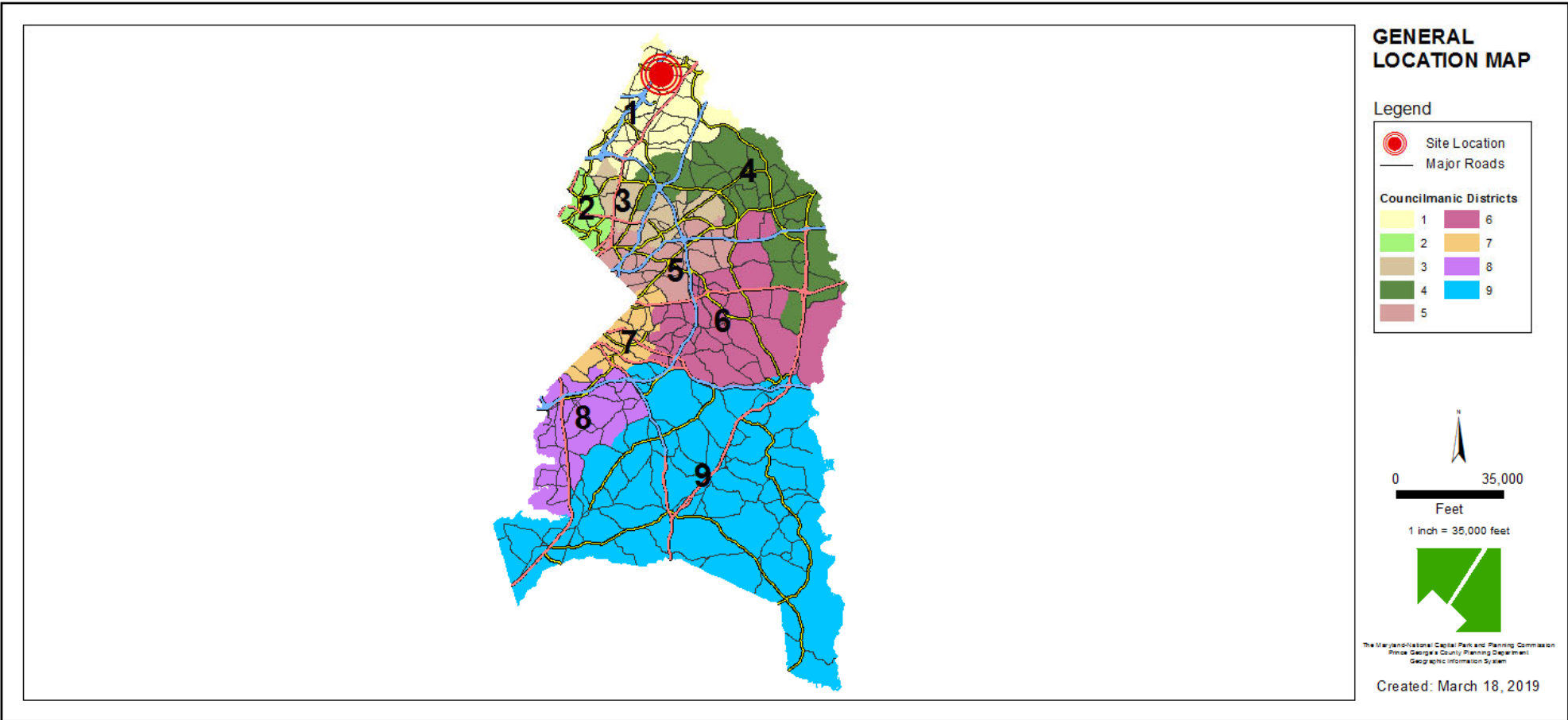
CASE: SE-4811

CONTEE ESTATE, LLC AN ASSISTED LIVING HOME

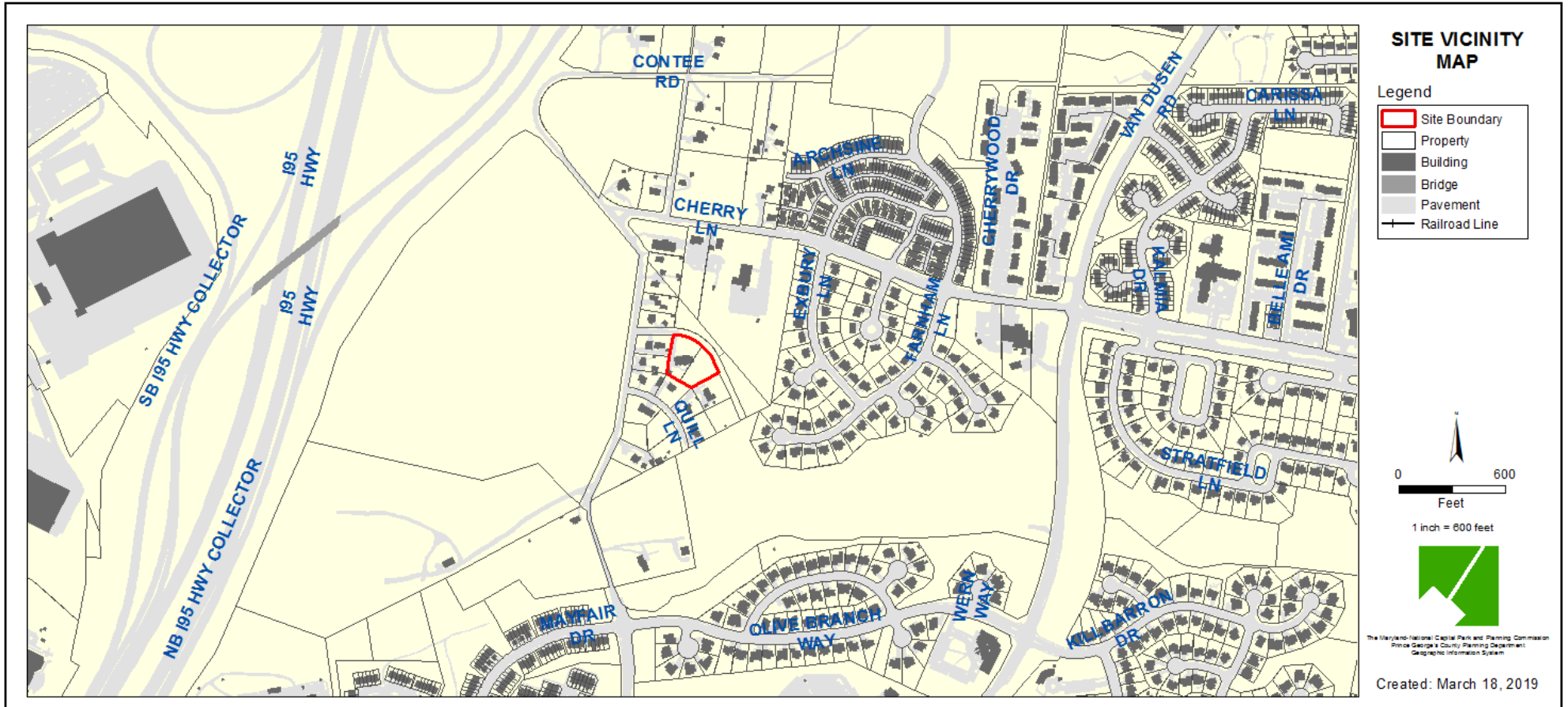
THE PRINCE GEORGE'S COUNTY PLANNING DEPARTMENT



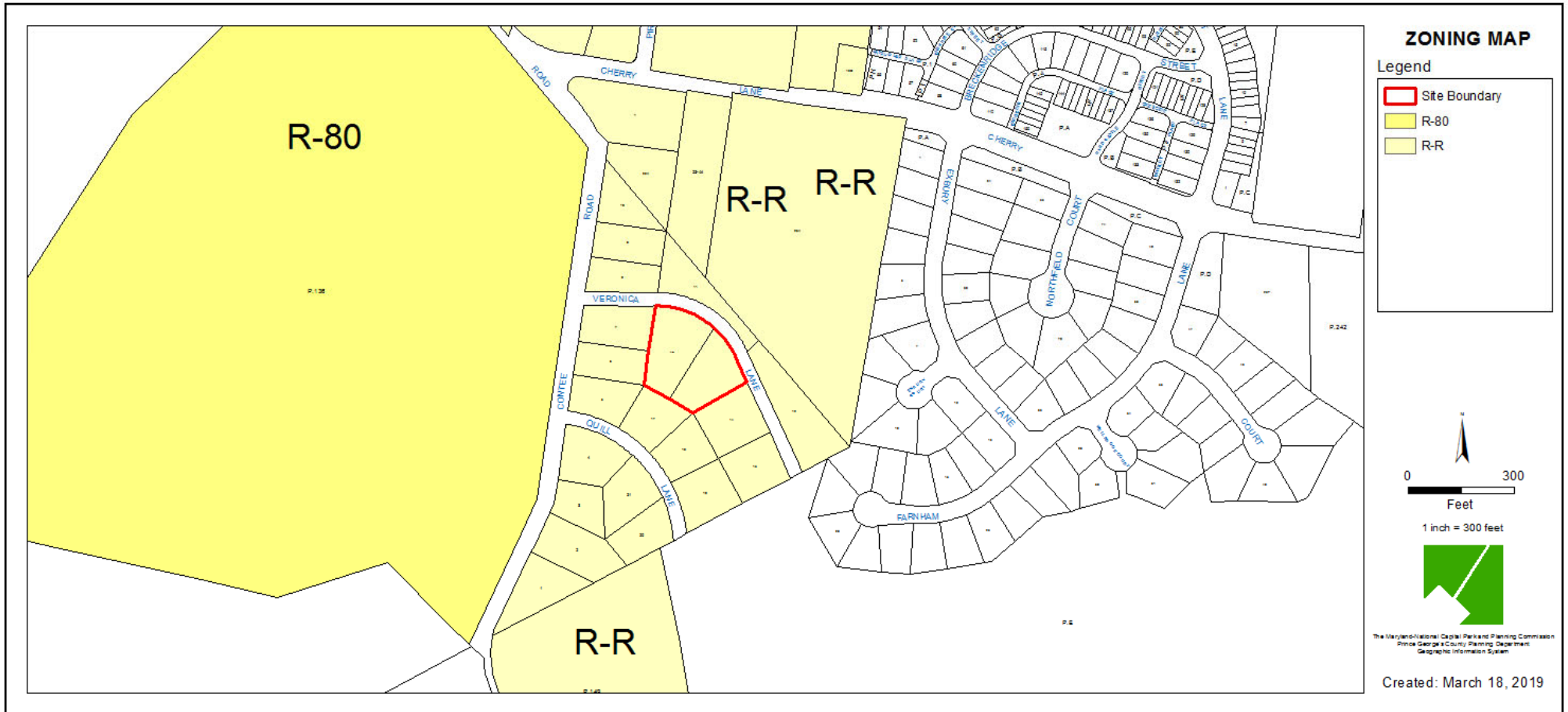
GENERAL LOCATION MAP



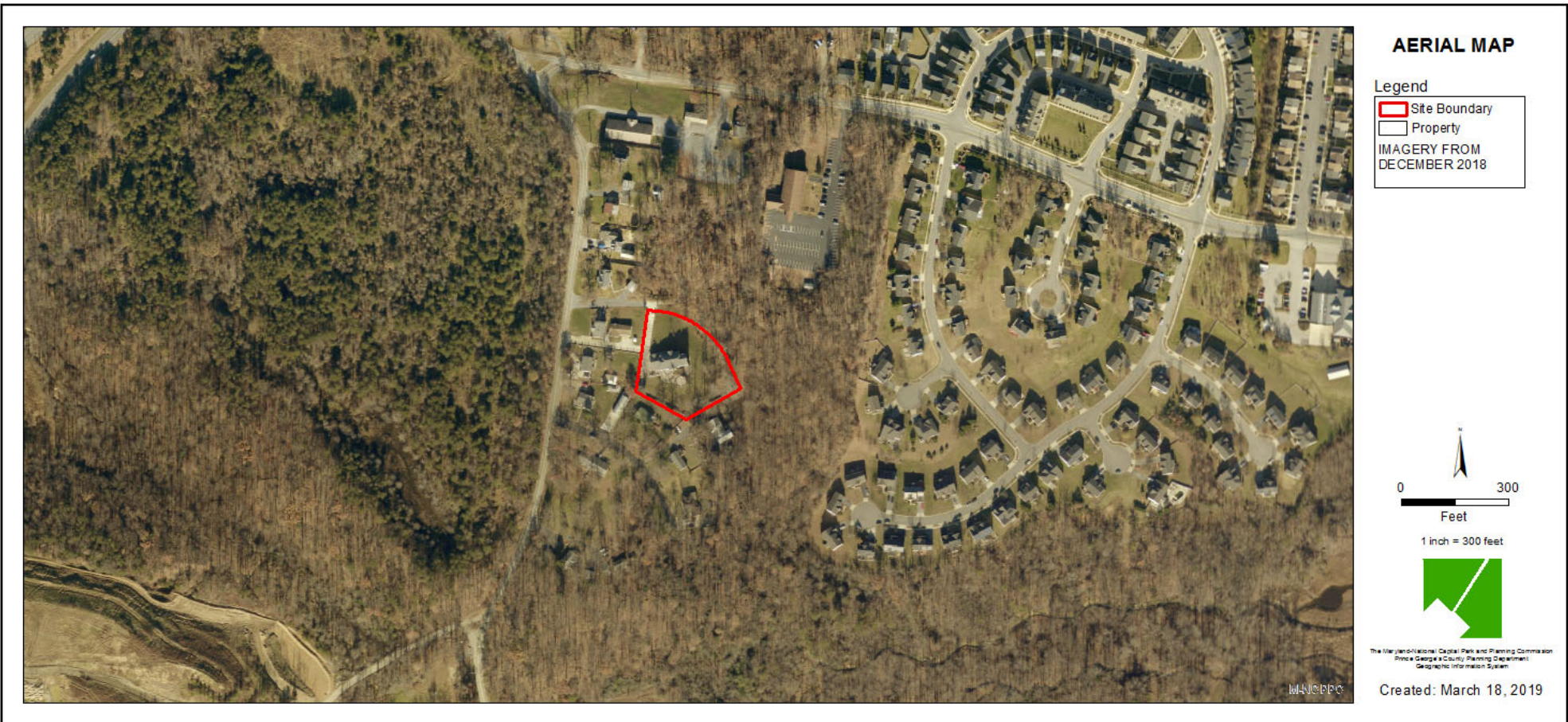
SITE VICINITY



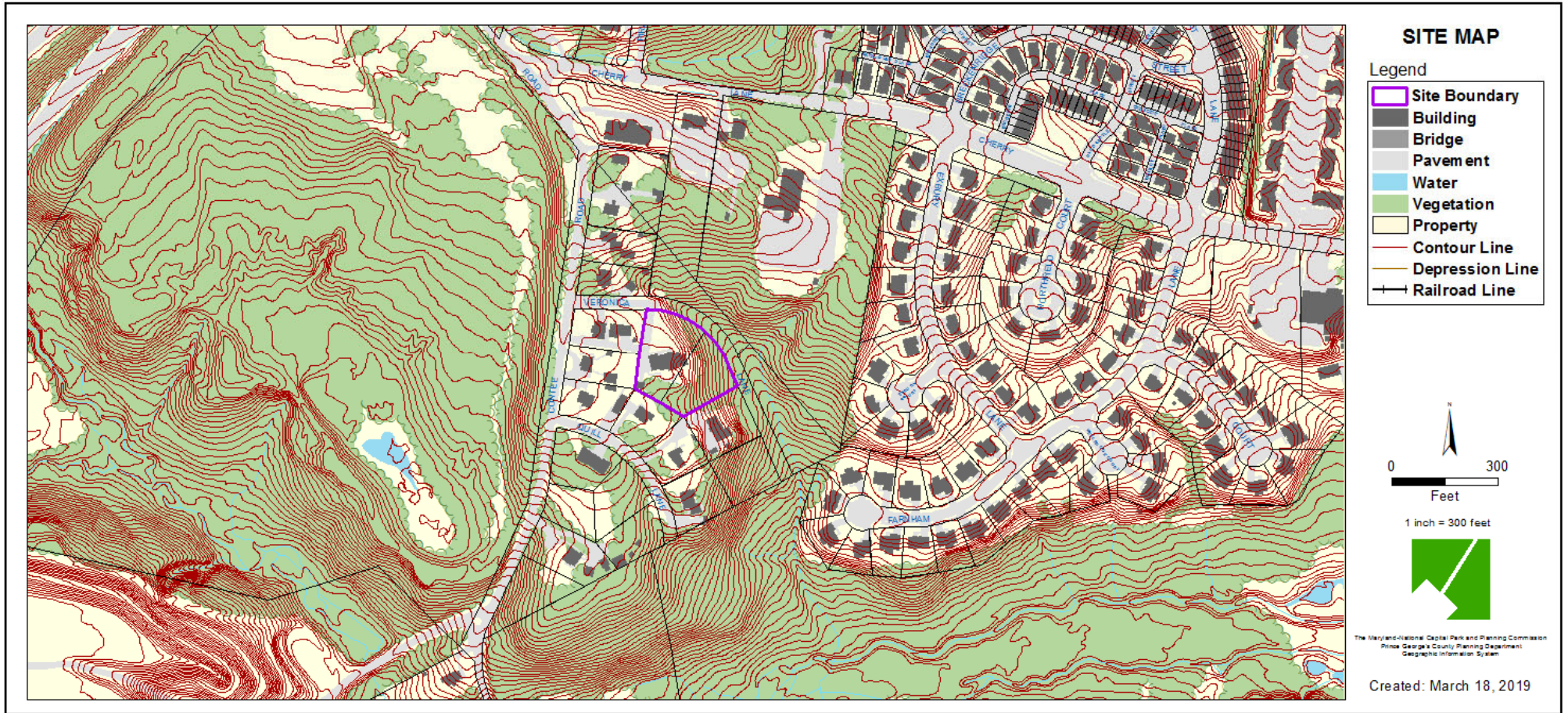
ZONING MAP



AERIAL MAP



SITE MAP



MASTER PLAN RIGHT-OF-WAY MAP



BIRD'S-EYE VIEW WITH APPROXIMATE SITE BOUNDARY OUTLINED



