



# Employ Prince George's FY 2027 Budget Overview

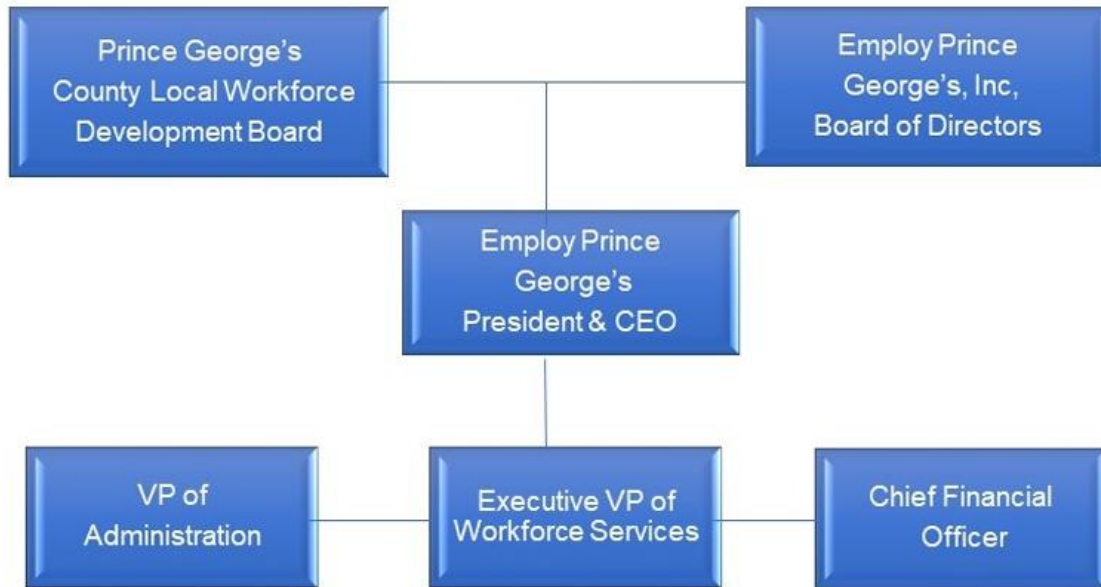
Education and Workforce Development Committee

Caleb Callender, Policy Analyst

April 27, 2026

# Employ Prince George's

**Jeff Swiley, Interim  
President & CEO**



## Mission

- **Serve as the link between job seekers looking to begin or change careers and businesses looking for skilled workers to maintain competitiveness in a changing labor market. The Prince George's County American Job Center serves over 40,000 job seekers and businesses annually.**

## Core Services

**Strengthen career exploration and exposure opportunities for youth, grades 6-12, and returning citizens through the expansions of CTE partnerships and access to pre-apprenticeship programs.**

**Expand the physical footprint of workforce services throughout the County by activating job and resource labs across municipalities, strengthening mobile and pop-up workforce services, and expand the use of EPG and Artificial Intelligence powered labor market tools.**

**Align workforce services, including job postings, recruitment services, incumbent worker training, and incentive programs, with the evolving needs of business.**

**Strengthen the workforce of Prince George's County through the American Job Center Community Network and align workforce services including job postings, recruitment services, incumbent work training, and incentive programs with the evolving needs of businesses.**

# Strategic Focus FY 2027

Modernize talent matching using AI and EPG Intelligence to improve the accuracy, speed, and quality of connecting residents with in-demand jobs.

Expand youth career pathways by increasing early career exposures (grades 6-12), strengthening CTE partnerships, and growing pre-apprenticeship and registered apprenticeship participation.

Enhance services for priority population, including returning citizens, opportunity youth, and underemployed adults, through comprehensive, trauma-informed, workforce programs.

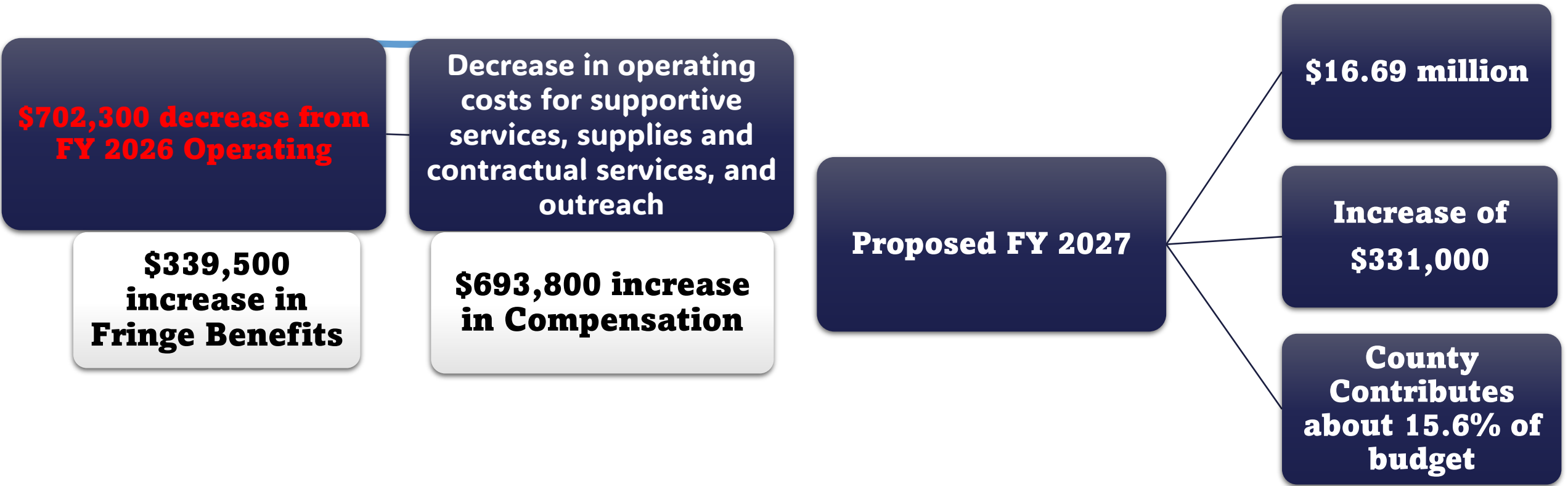
Increase Countywide access to workforce services by expanding job and resource labs, mobile workforce activities, and virtual platforms while strengthening employer engagement and sector strategies to align training, recruitment, and hiring with business needs.

Coordinate the Countywide workforce ecosystem through the American Job Center Community Network, ensuring partner alignment, accountability, and systemwide impact.

# FY 2027 BUDGET SUMMARY

Expenditures by Category

Category	FY 2025 Actual	FY 2026 Budget	FY 2026 Estimate	FY 2027 Proposed	Change FY26-FY27	
					Amount (\$)	Percent (%)
Compensation	\$9,728,550	\$6,524,000	\$8,059,300	\$7,217,800	\$693,800	10.6%
Fringe Benefits	3,377,809	2,242,700	2,901,300	2,582,200	339,500	15.1%
Operating	10,690,429	7,591,900	13,798,800	6,889,600	(702,300)	-9.3%
<b>Total</b>	<b>\$23,796,788</b>	<b>\$16,358,600</b>	<b>\$24,759,400</b>	<b>\$16,689,600</b>	<b>\$331,000</b>	<b>2.0%</b>



# BUDGET REVENUE

**Funded through an annual County grant in the Non-Departmental section of the budget.**

**County grant amount remains unchanged from FY 2026 budget.**

## Revenues by Category

Category	FY 2025 Actual	FY 2026 Budget	FY 2026 Estimate	FY 2027 Proposed	Change FY26-FY27	
					Amount (\$)	Percent (%)
County Grant - County Executive	\$1,694,300	\$1,609,600	\$1,609,600	\$1,609,600	\$—	0.0%
County Grant - Reentry Program	300,000	300,000	300,000	300,000	—	0.0%
County Grant - Video Lottery Terminal Grant	200,000	200,000	200,000	200,000	—	0.0%
County Grant - Returning Citizens Affairs Division	1,000,000	500,000	500,000	500,000	—	0.0%
Department of Family Services Grant	214,000	214,000	—	—	(214,000)	-100.0%
DHCD Community Development Block Grants	44,492	—	313,200	—	—	0.0%
Governor's Summer Youth Connection	261,190	235,000	254,400	240,000	5,000	2.1%
Maryland American Rescue Plan Act (ARPA)	2,216,295	500,000	1,339,000	—	(500,000)	-100.0%
Prince George's American Rescue Plan Act (ARPA)	1,067,056	—	2,378,000	—	—	0.0%
Racing Commission	200,000	200,000	—	200,000	—	0.0%
Sponsorships	141,807	—	—	40,000	40,000	100.0%
Blueprint for Success	7,739,179	6,800,000	9,103,500	6,500,000	(300,000)	-4.4%
Work Innovation Opportunity Act Grant-Adult Grant	2,121,987	2,100,000	2,388,000	1,800,000	(300,000)	-14.3%
Work Innovation Opportunity Act Grant-Dislocated Worker Grant	1,600,735	1,500,000	1,525,000	1,300,000	(200,000)	-13.3%
Work Innovation Opportunity Act Grant-Youth Grant	3,271,170	2,200,000	2,804,600	2,000,000	(200,000)	-9.1%
Reentry Employment Incentive	—	—	500,000	350,000	350,000	100.0%
Maryland Department of Service and Civic Innovation	39,990	—	—	—	—	0%
US Department of Labor Pathways	—	—	823,900	850,000	850,000	100.0%
Council for Adult and Experiential Learning	200,000	—	300,000	300,000	300,000	100.0%
Center for Workforce Excellence	62,358	—	—	—	—	0.0%
Governor's Office of Crime Prevention Grant award	—	—	114,800	—	—	0.0%
Carry-over Funds	1,289,101	—	—	500,000	500,000	100.0%
Maryland Department of Labor Grant	133,128	—	305,400	—	—	0.0%
<b>Total</b>	<b>\$23,796,788</b>	<b>\$16,358,600</b>	<b>\$24,759,400</b>	<b>\$16,689,600</b>	<b>\$331,000</b>	<b>2.0%</b>

# STAFFING

COUNTY

FUNDED FULL-TIME **12**

GRANT FUNDED

FULL-TIME **90**

GRANT FUNDED

PART-TIME **1**

**TOTAL: 103**

Category	FY 2026 Approved		FY 2027 Proposed		Change Amount		Change Percentage	
	FT	PT	FT	PT	FT	PT	FT	PT
County Funded	22	0	12	0	-10	0	-45.5%	N/A
Grant Funded	95	4	90	1	-5	-3	-5.3%	-75.0%
<b>Total</b>	<b>117</b>	<b>4</b>	<b>102</b>	<b>1</b>	<b>-15</b>	<b>-3</b>	<b>-13%</b>	<b>-75%</b>



# Challenges

**Reduction in available funding has led to staff reduction across Employ Prince George's.**

**This has reduced EPG's operational capacity and decreased the number of job seekers able to progress to Tier 3 services.**

**The ARPA and County ARPA grant terminate on June 30, 2026.**

**May affect overall capacity**

**May reduce enrollment in initiatives reliant on these funds**

**EPG has delayed renewing their lease with Tanger Outlets at the National Harbor.**

**County's Re-Entry Employment Incentive Program has not taken off yet**

**No residents have been served by the program**

**Currently, businesses choose other EPG incentives over the reentry incentive**

**The County Council's Re-Entry Advisor Board became defunct after the recommendations were finalized**



# THANK YOU

---

 Caleb Callender

 [ctcallender@co.pg.md.us](mailto:ctcallender@co.pg.md.us)