

ITEM: 8 & 9

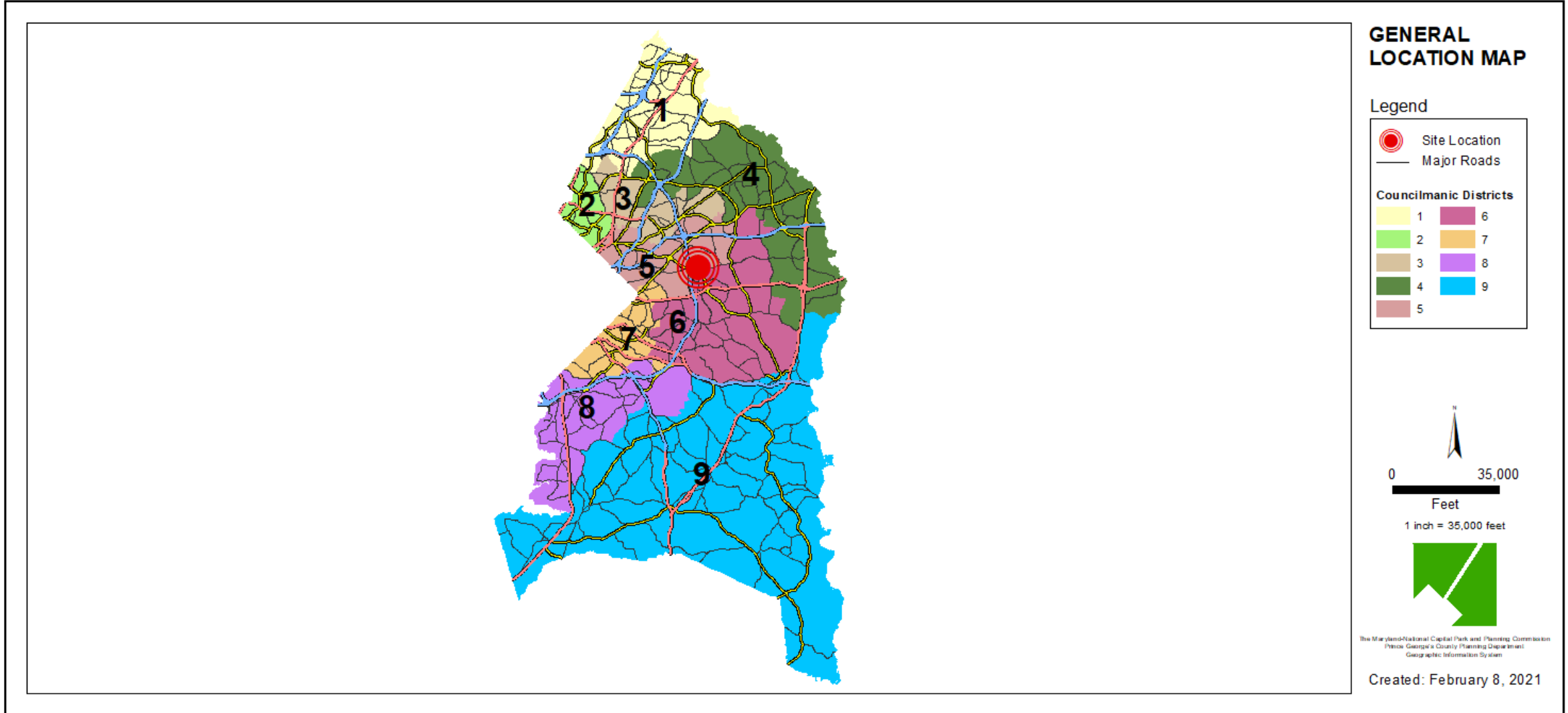
CASE: DSP-04067-10 & DDS-672

WOODMORE COMMONS

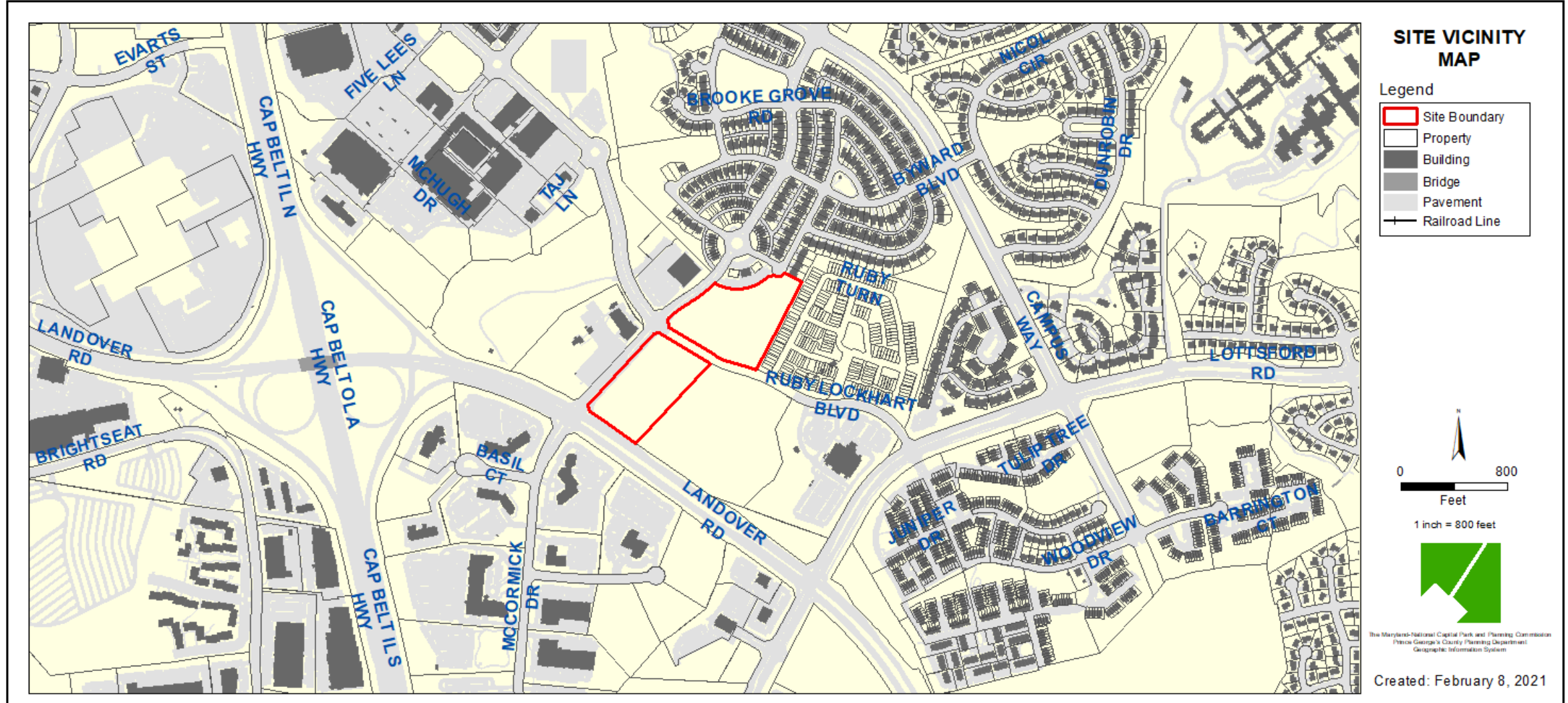
THE PRINCE GEORGE'S COUNTY PLANNING DEPARTMENT



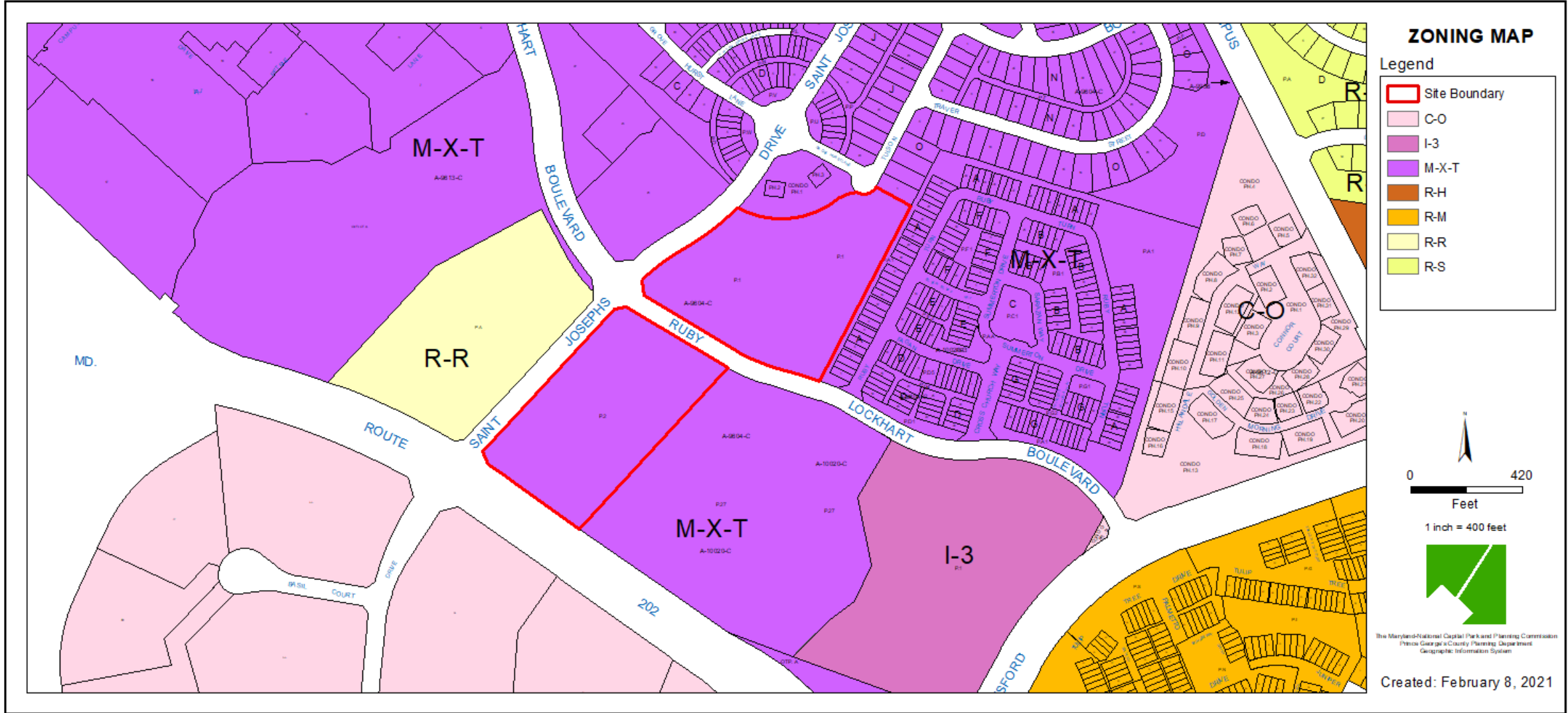
GENERAL LOCATION MAP



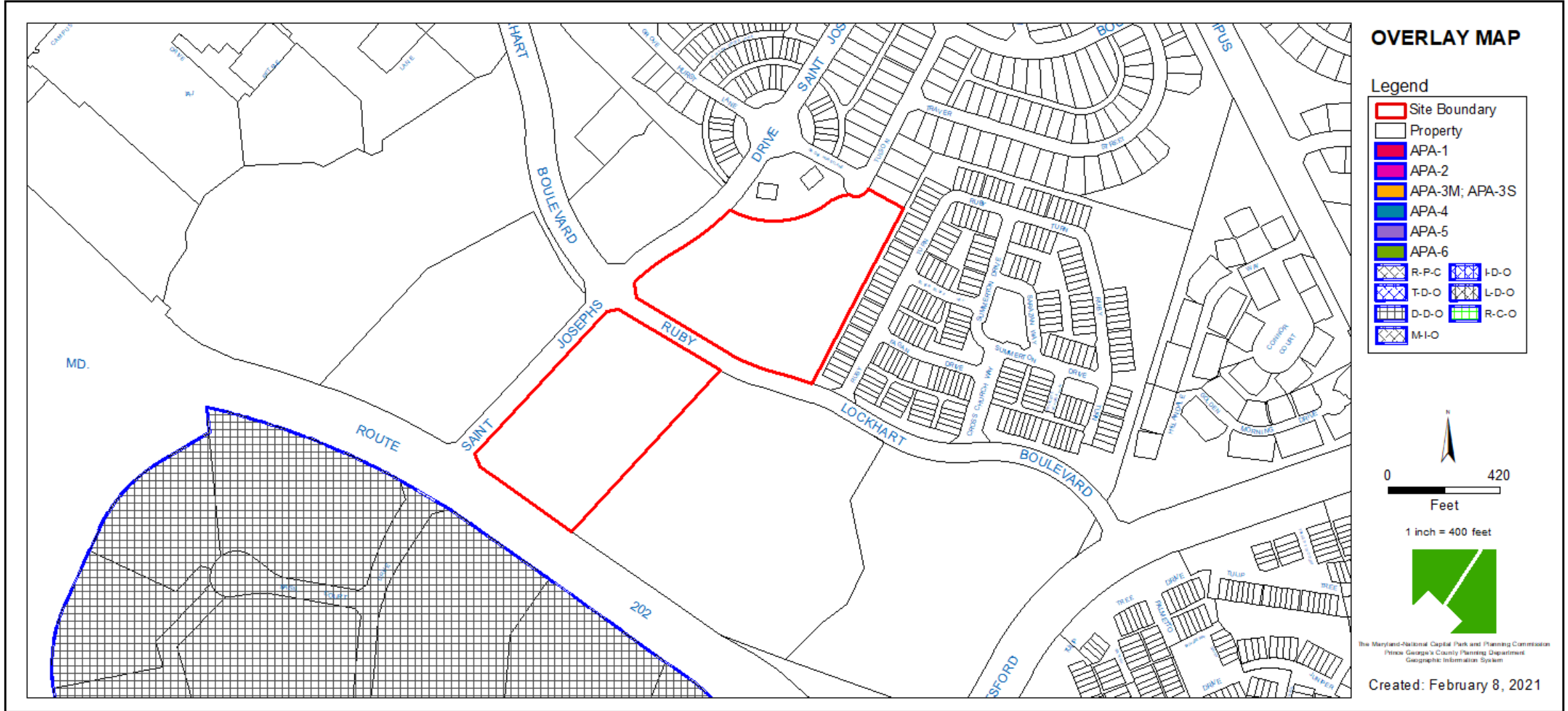
SITE VICINITY



ZONING MAP



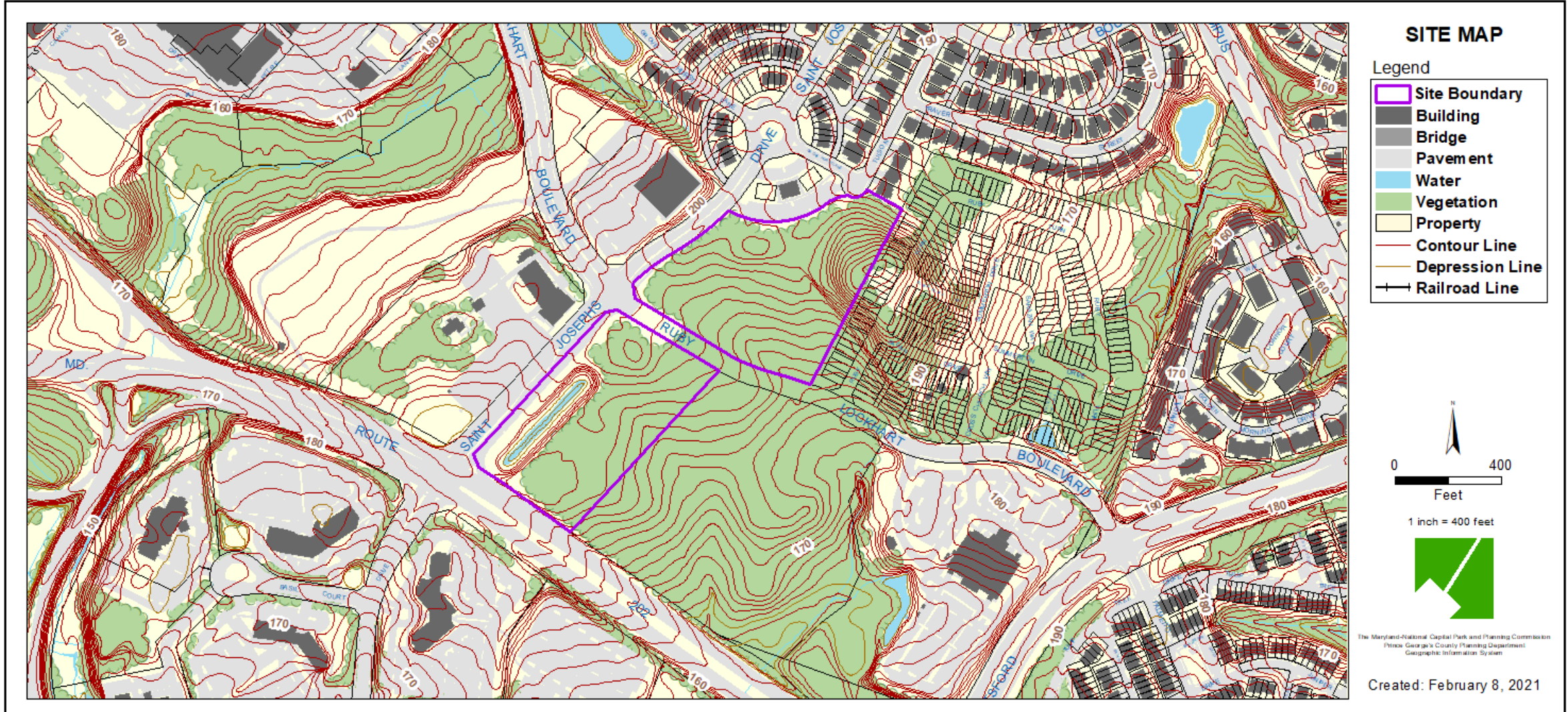
OVERLAY MAP



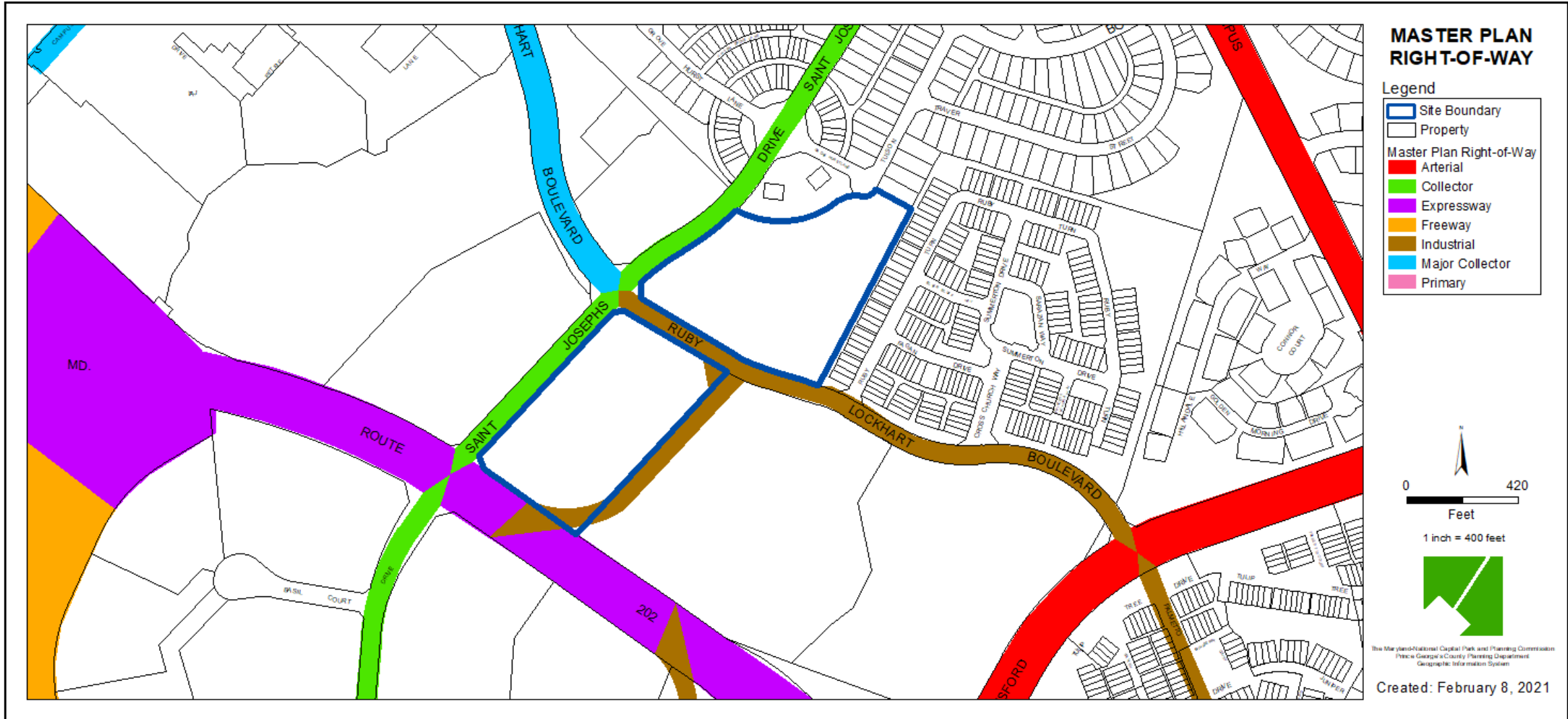
AERIAL MAP



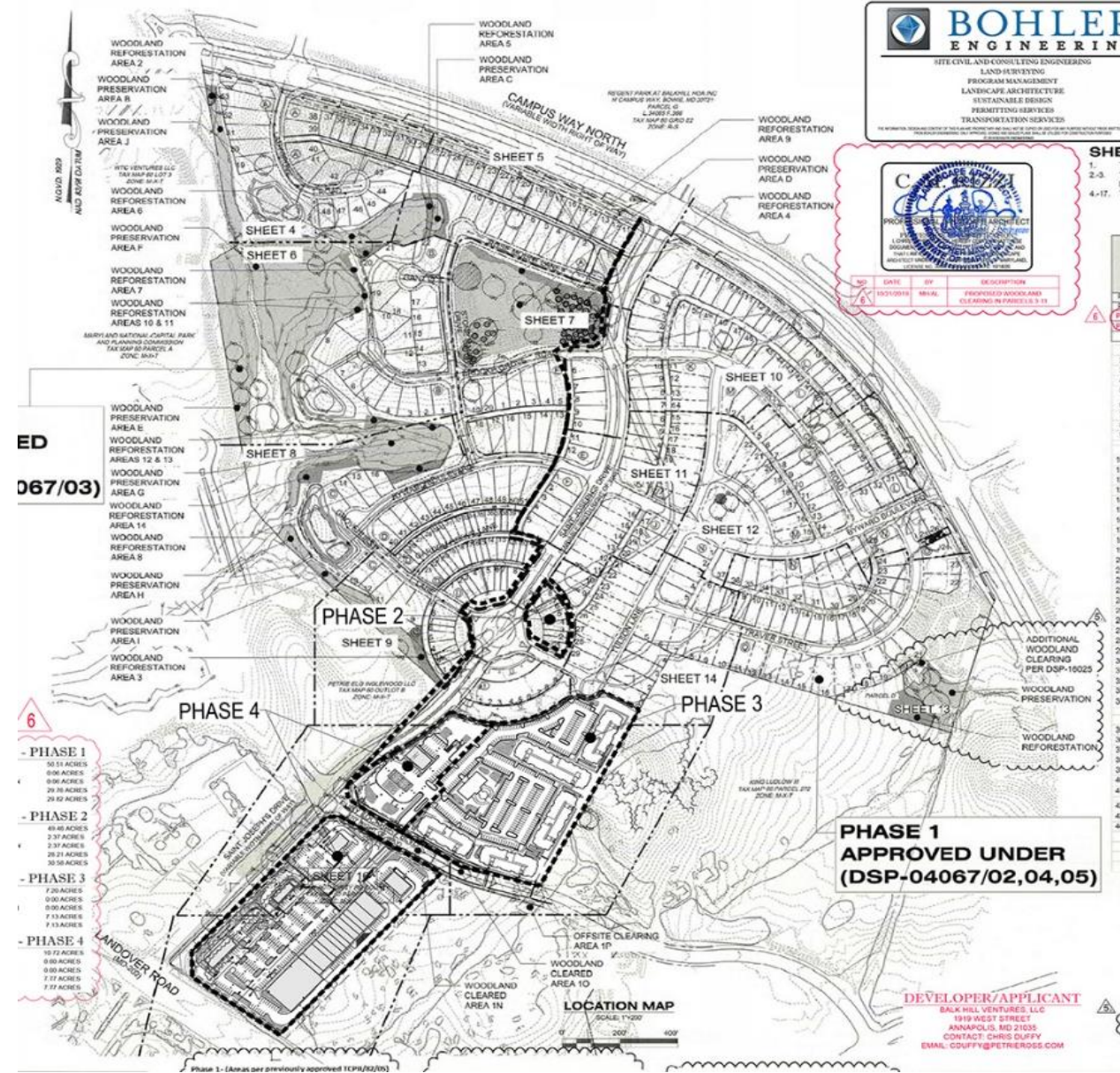
SITE MAP



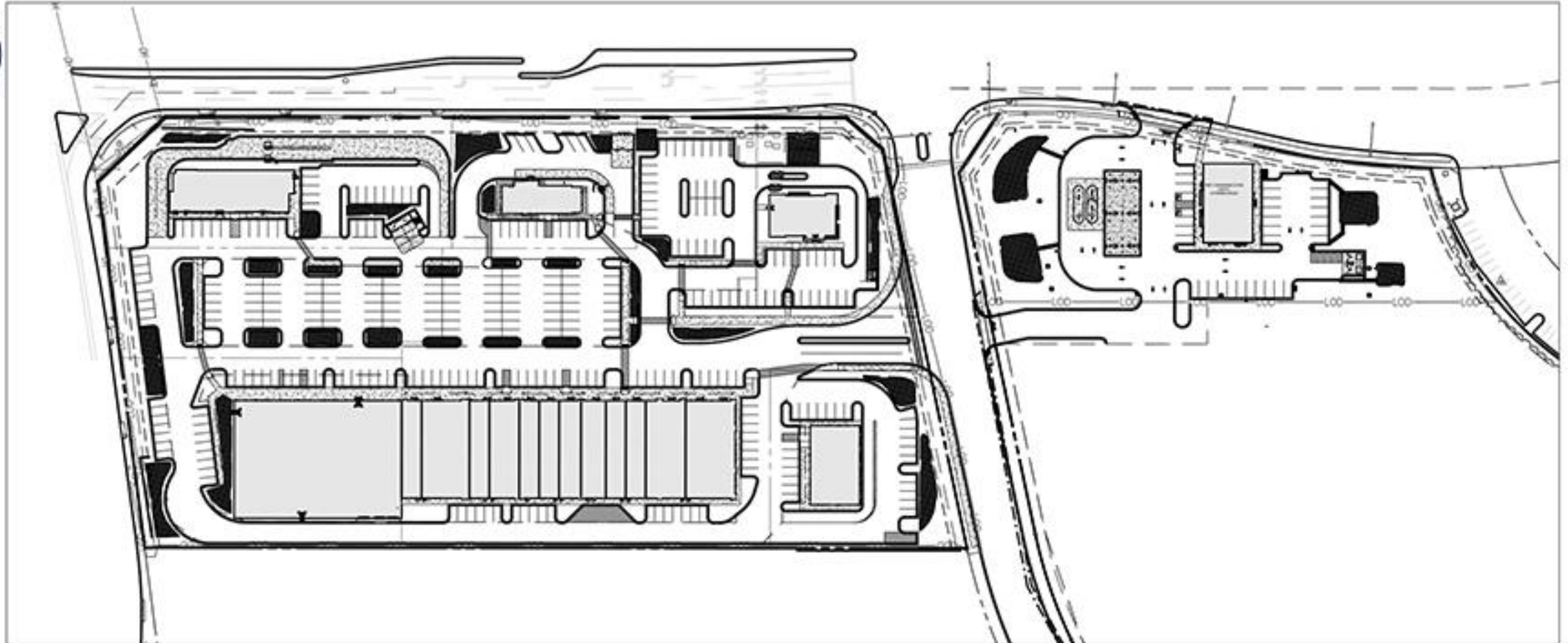
MASTER PLAN RIGHT-OF-WAY MAP



BALK HILL VILLAGE PLAN



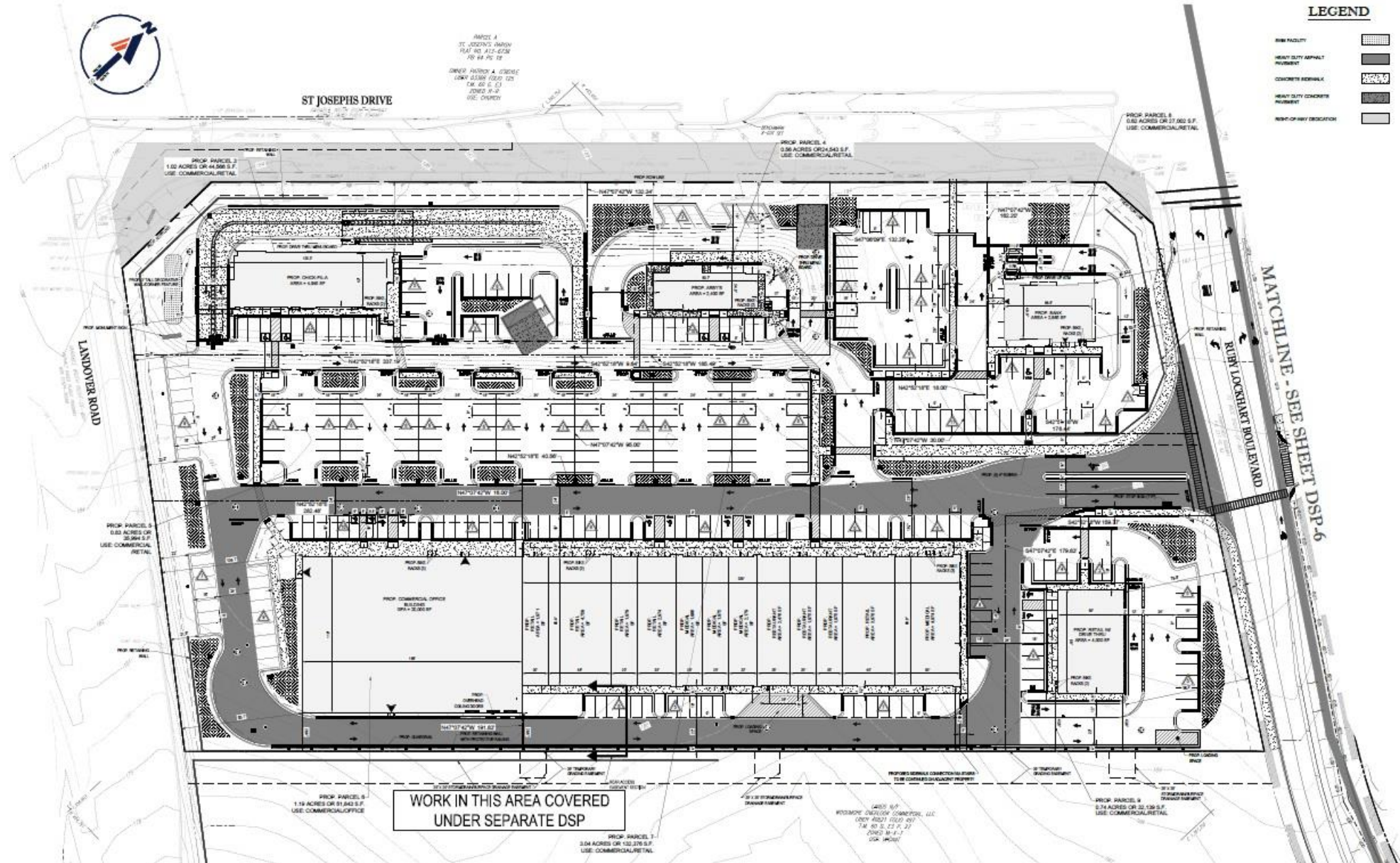
OVERALL SITE PLAN



(USTRIAL ONLY)



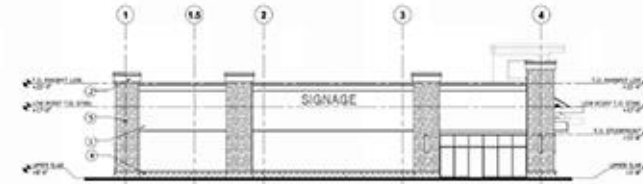
SITE PLAN- WESTERN SECTION



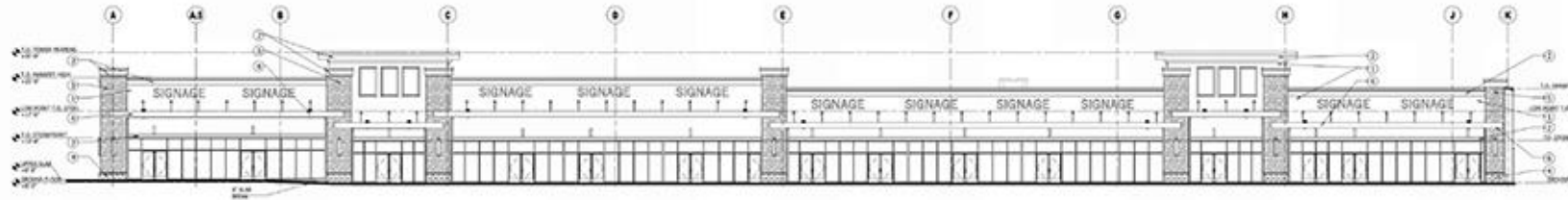
IN-LINE RETAIL BUILDING ELEVATIONS



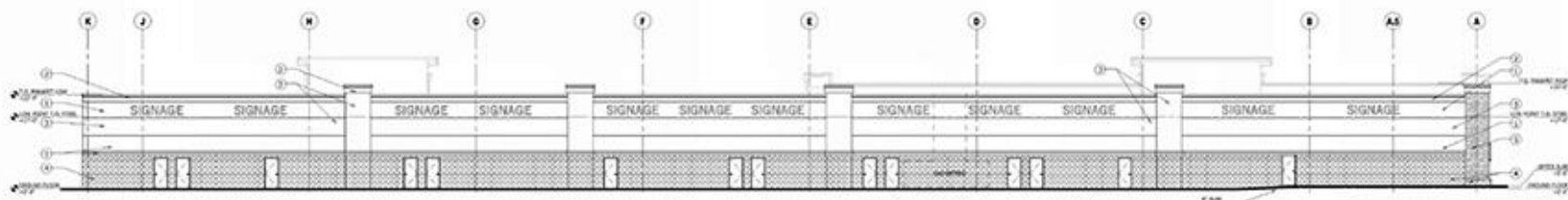
1 SW Perspective View
SCALE: 1/8" = 1'-0"



2 SIDE ELEVATION V1
SCALE: 3/32" = 1'-0"



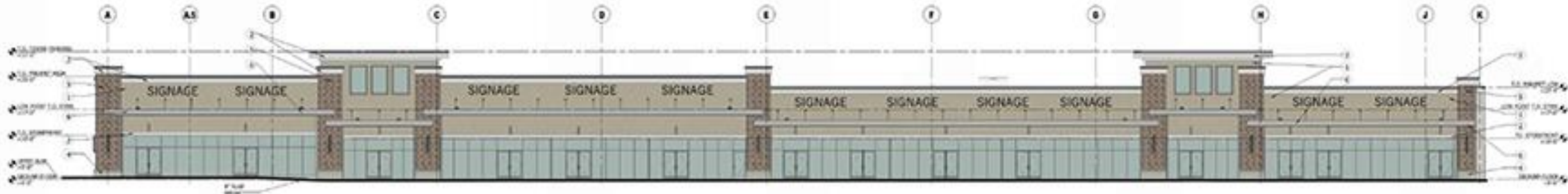
3 FRONT ELEVATION V1
SCALE: 3/32" = 1'-0"



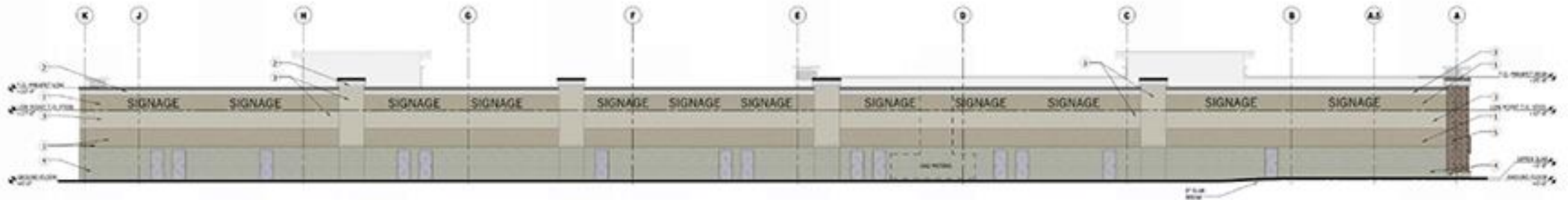
4 REAR ELEVATION V1
SCALE: 3/32" = 1'-0"



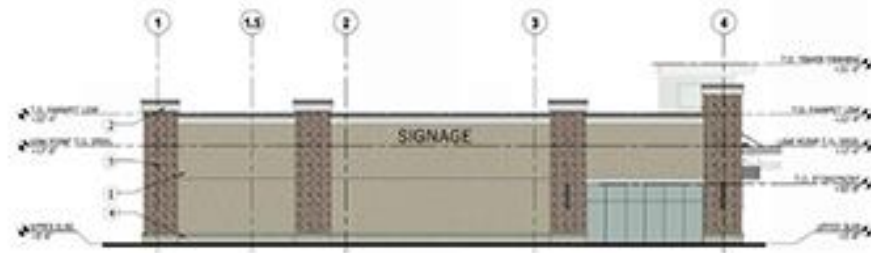
IN-LINE RETAIL BUILDING ELEVATIONS



1 FRONT ELEVATION RENDERED
SCALE: 3/32" = 1'-0"

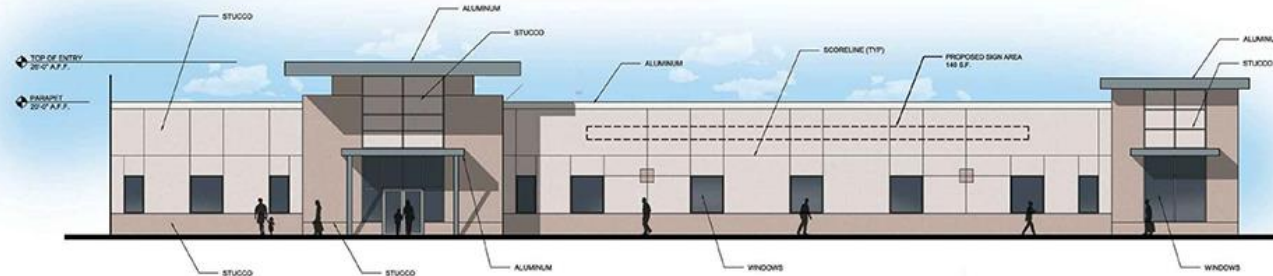


2 REAR ELEVATION RENDERED
SCALE: 3/32" = 1'-0"

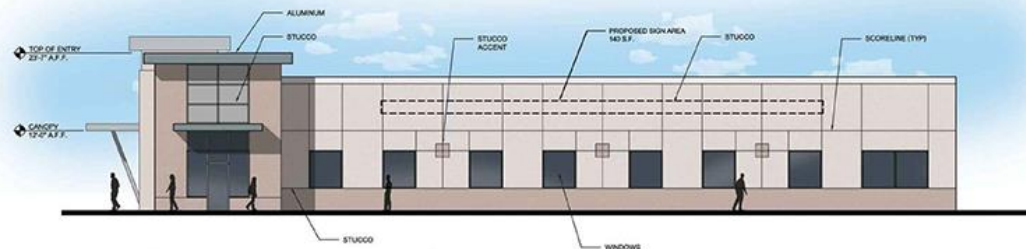


3 SIDE ELEVATION RENDERED
SCALE: 3/32" = 1'-0"

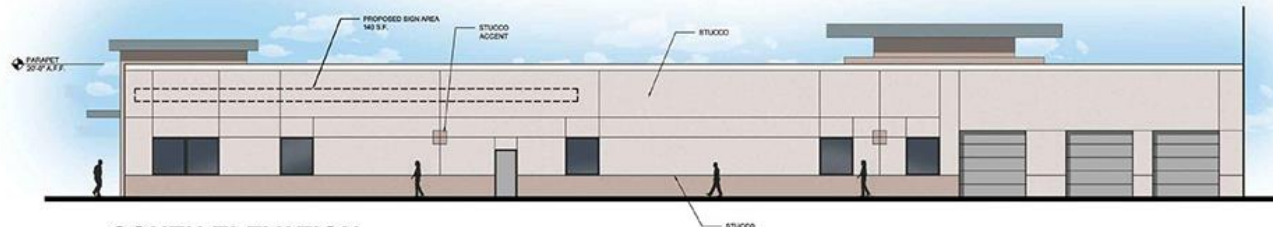
OFFICE BUILDING ELEVATIONS



NORTH ELEVATION
SCALE: 1/8"=1'-0" A



WEST ELEVATION
SCALE: 1/8"=1'-0" B



SOUTH ELEVATION
SCALE: 1/8"=1'-0" C

<table border="0"> <tr> <td style="width: 20px; height: 20px; background-color: #f0f0f0; border: 1px solid black;"></td> <td>STUCCO DRYVIT #103 NATURAL WHITE</td> </tr> <tr> <td style="width: 20px; height: 20px; background-color: #c0c0c0; border: 1px solid black;"></td> <td>STUCCO DRYVIT #105 SUEDE</td> </tr> </table>		STUCCO DRYVIT #103 NATURAL WHITE		STUCCO DRYVIT #105 SUEDE	<table border="0"> <tr> <td style="width: 20px; height: 20px; background-color: #e0e0e0; border: 1px solid black;"></td> <td>STUCCO DRYVIT #104 DOVER SKY</td> </tr> <tr> <td style="width: 20px; height: 20px; background-color: #808080; border: 1px solid black;"></td> <td>METAL PANEL PAC. CLAD ALUMINUM CITYSCAPE</td> </tr> </table>		STUCCO DRYVIT #104 DOVER SKY		METAL PANEL PAC. CLAD ALUMINUM CITYSCAPE
	STUCCO DRYVIT #103 NATURAL WHITE								
	STUCCO DRYVIT #105 SUEDE								
	STUCCO DRYVIT #104 DOVER SKY								
	METAL PANEL PAC. CLAD ALUMINUM CITYSCAPE								

CHICK-FIL-A ELEVATIONS

DESIGN INTENT PACKAGE
Balk Hill
Saint Joseph's Drive and Landover Road, Largo, MD 20774



PERSPECTIVE VIEW - ENTRY

STORE NUMBER
04245

PROTOTYPE P13_LE
VERSION Approver
TIER TIER 1
BUILDING FOOTPRINT 4839
SEAT COUNT - INTERIOR 96
SEAT COUNT - EXTERIOR 20
SEATING TYPE STANDARD
REGISTERS 4
DRIVE-THRU YES
LEED NOT CERTIFIED
LANDSCAPING STANDARD

OPTIONS
RESTROOM THREE FIXTURE
WATER FILTRATION TYPE 1
PLAYGROUND STANDARD
KITCHEN LAYOUT CENTERLINE

DESIGN SIGN-OFF

DESIGN LEADER _____ DATE _____

DIP COVER SHEET

04245, Balk Hill, Saint Joseph's Drive and Landover Road, Largo, MD 20774
THE CHICK-FIL-A DESIGN INTENT PACKAGE REPRESENTS A BRAND COMPLIANT DESIGN SOLUTION. SITE ADAPT PROFESSIONALS ARE RESPONSIBLE FOR APPLICATION OF DESIGN AND COMPLIANCE OF WITH ORDINANCES AND CODES. 12/06/2019



PERSPECTIVE VIEW - REAR LEFT

EXECUTIVE SUMMARY

EXTERIOR MODIFICATIONS
ENTER EXTERIOR MODIFICATIONS HERE.

INTERIOR MODIFICATIONS
ENTER INTERIOR MODIFICATIONS HERE.

FRONT OF HOUSE MODIFICATIONS
ENTER FRONT OF HOUSE MODIFICATIONS HERE.

BACK OF HOUSE MODIFICATIONS
ENTER BACK OF HOUSE MODIFICATIONS HERE.



PERSPECTIVE VIEW - REAR RIGHT



PERSPECTIVE VIEW - FRONT LEFT

PERSPECTIVE VIEWS

04245, Balk Hill, Saint Joseph's Drive and Landover Road, Largo, MD 20774
THE CHICK-FIL-A DESIGN INTENT PACKAGE REPRESENTS A BRAND COMPLIANT DESIGN SOLUTION. SITE ADAPT PROFESSIONALS ARE RESPONSIBLE FOR APPLICATION OF DESIGN AND COMPLIANCE OF WITH ORDINANCES AND CODES. 12/06/2019



EXTERIOR ELEVATION
1" = 10'-0"



EXTERIOR ELEVATION
1" = 10'-0"

EXTERIOR ELEVATIONS

04245, Balk Hill, Saint Joseph's Drive and Landover Road, Largo, MD 20774
THE CHICK-FIL-A DESIGN INTENT PACKAGE REPRESENTS A BRAND COMPLIANT DESIGN SOLUTION. SITE ADAPT PROFESSIONALS ARE RESPONSIBLE FOR APPLICATION OF DESIGN AND COMPLIANCE OF WITH ORDINANCES AND CODES. 12/06/2019



EXTERIOR ELEVATION
1" = 10'-0"

ATTACHED CANOPY SCHEDULE						
Mark	Description	Count	Overall Width	Overall Depth	To Back Mounting Offset From Top	Integral Lighting
C1-C	Exterior Canopy	3	6'-4"	1'-0"	0"	No
C4-E	Exterior Canopy	1	4'-0"	4'-0"	2'-4"	Yes
C4-G	Exterior Canopy	1	7'-1"	4'-0"	2'-4"	Yes
C4-L	Exterior Canopy	1	15'-4"	4'-0"	2'-4"	Yes
Grand Total		6				



EXTERIOR ELEVATION
1" = 10'-0"

EXTERIOR FINISHES

B1-A BRICK VENEER
COLOR: LIGHT BROWN
SIZE: MODULAR

B1-B BRICK VENEER
COLOR: DARK BROWN
SIZE: MODULAR

E1-C PRET FINISHED METAL CORNING
COLOR: DARK BRONZE

E1-B EXTERIOR PAINT
COLOR: DARK BRONZE
FINISH: SEMI-GLOSS

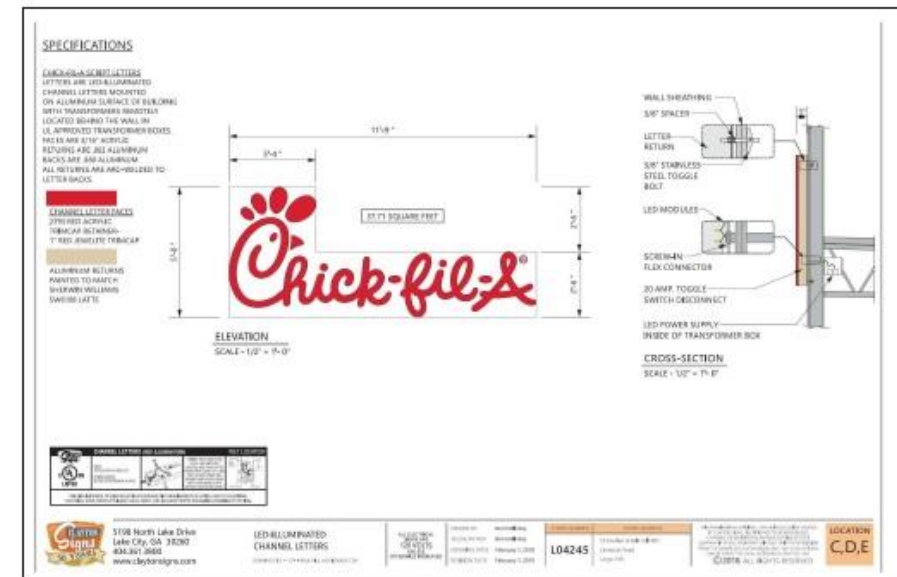
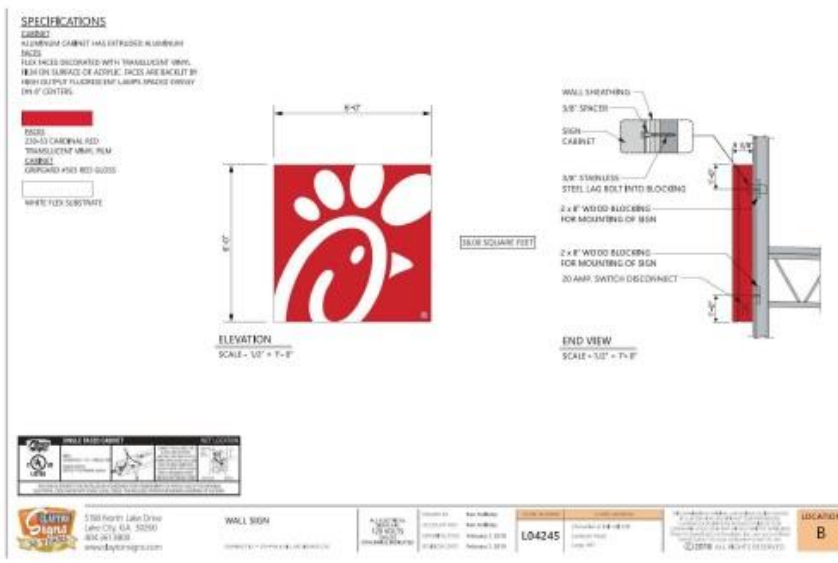
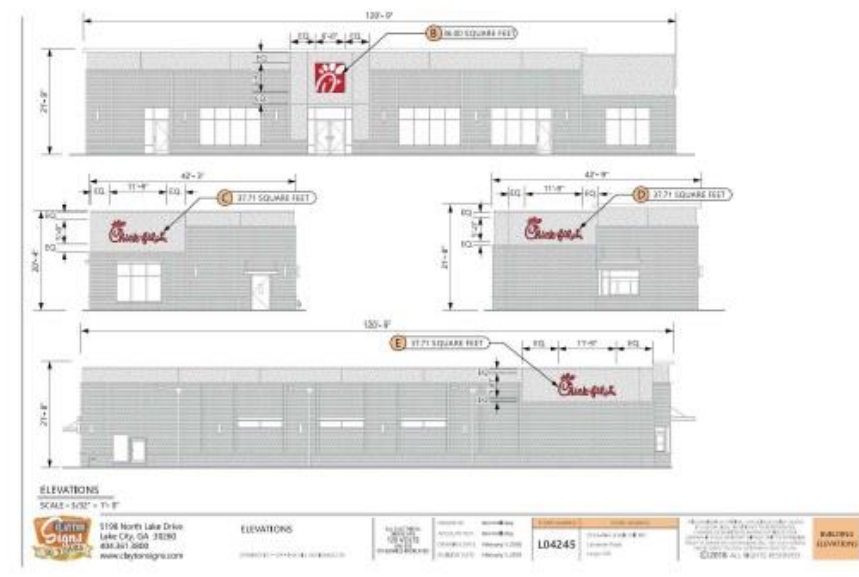
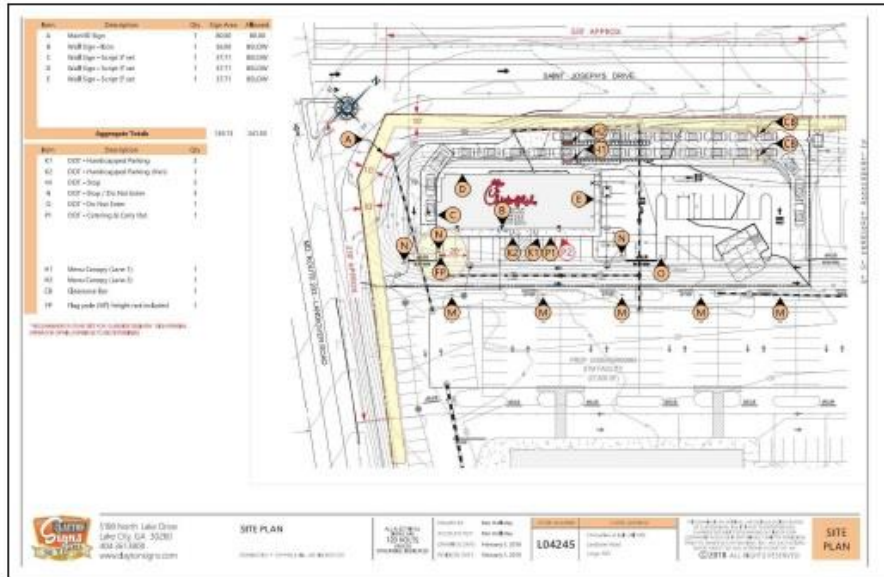
S1-L STOREFRONT
COLOR: DARK BRONZE

EXTERIOR ELEVATIONS

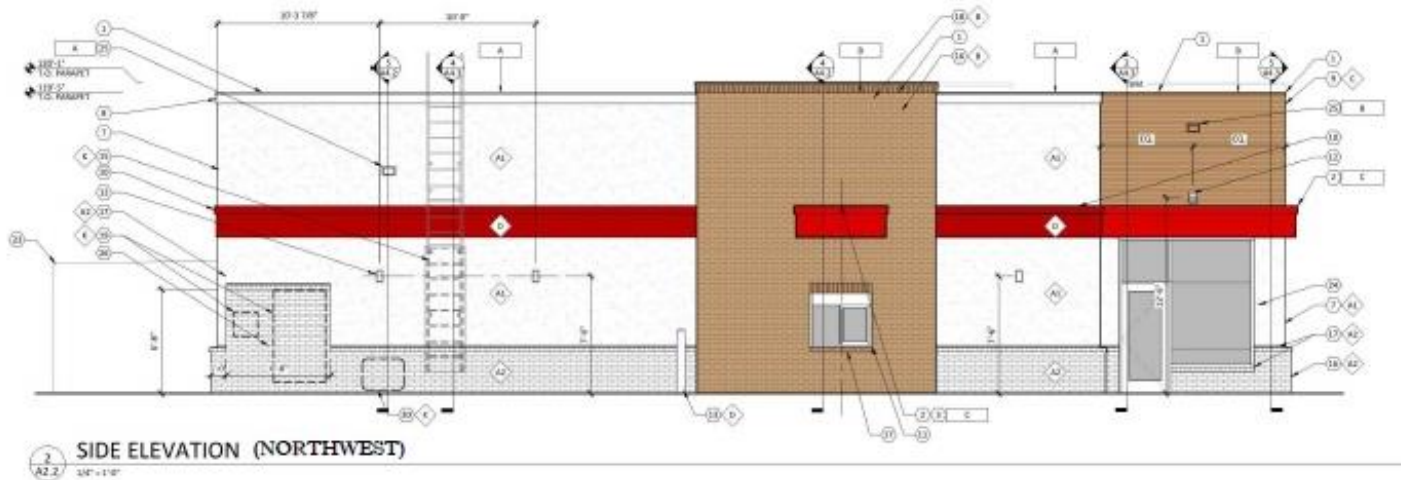
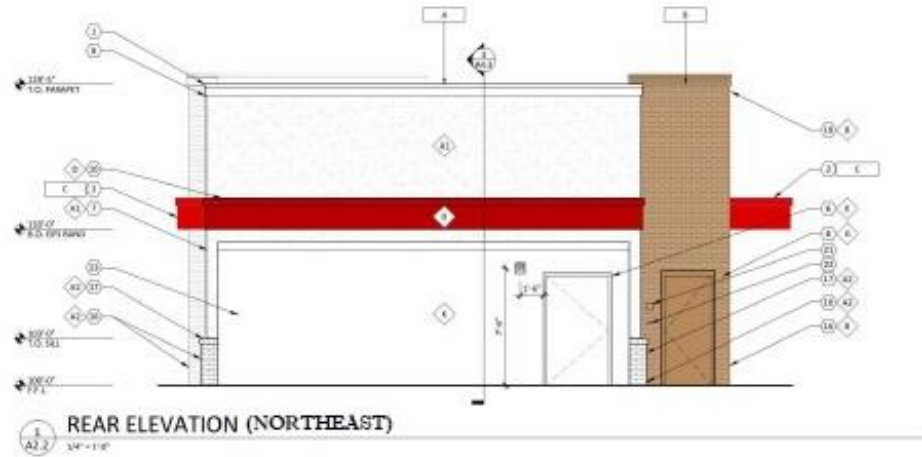
04245, Balk Hill, Saint Joseph's Drive and Landover Road, Largo, MD 20774
THE CHICK-FIL-A DESIGN INTENT PACKAGE REPRESENTS A BRAND COMPLIANT DESIGN SOLUTION. SITE ADAPT PROFESSIONALS ARE RESPONSIBLE FOR APPLICATION OF DESIGN AND COMPLIANCE OF WITH ORDINANCES AND CODES. 12/06/2019



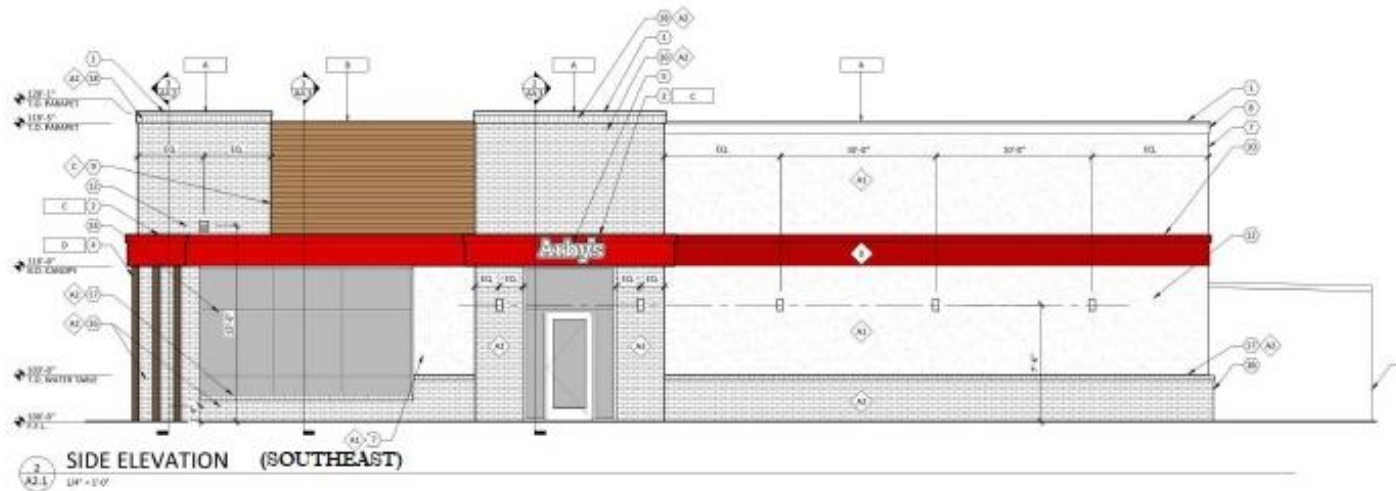
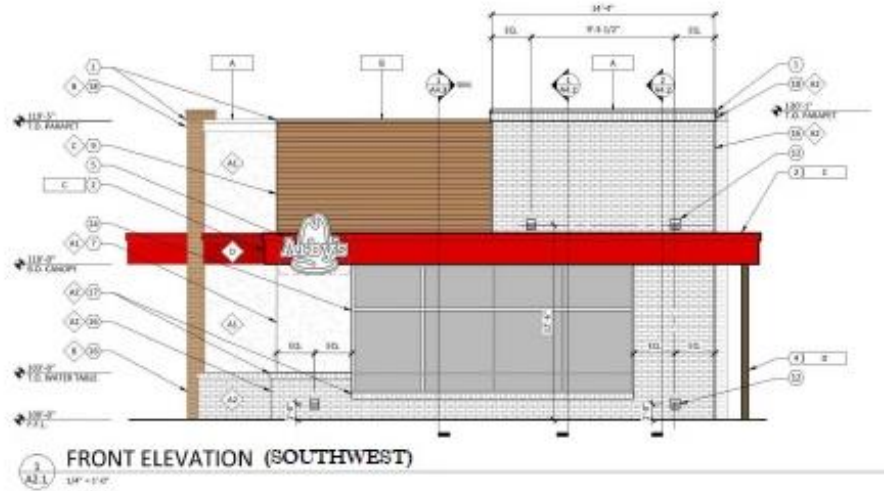
CHICK-FIL-A SIGNAGE



ARBY'S BUILDING ELEVATIONS



ARBY'S BUILDING ELEVATIONS



ARBY'S SIGNAGE

Arby's

NI-14 PROGRAM SIGNAGE
Drive Thru Order Canopy

Allen Industries
Signs and Image Solutions
www.allenindustries.com

Drive Thru Canopy
February, 2014
Page 2

Project Colors:
 Red: Pantone 185C
 Black: Pantone 690C
 Silver: Pantone 801C
 White: Pantone 382C

Arby's

Client Review Status	Notes	Date / Description	Project Information
Approved		02/19/14	Arby's
Approved		02/19/14	Arby's
Approved		02/19/14	Arby's
Approved		02/19/14	Arby's
Approved		02/19/14	Arby's
Approved		02/19/14	Arby's

Allen Industries
Architectural Signage Division
P.O. Box 1000, St. Louis, MO 63103
Phone: 314.291.2200 Fax: 314.291.4222
Because Image is Everything

Drive Thru Order Canopy Construction
February, 2014
Page 3

Arby's

Client Review Status	Notes	Date / Description	Project Information
Approved		02/19/14	Arby's
Approved		02/19/14	Arby's
Approved		02/19/14	Arby's
Approved		02/19/14	Arby's
Approved		02/19/14	Arby's
Approved		02/19/14	Arby's

Allen Industries
Architectural Signage Division
P.O. Box 1000, St. Louis, MO 63103
Phone: 314.291.2200 Fax: 314.291.4222
Because Image is Everything

Gravity Return Mounting Bracket
February, 2014
Page 4

Arby's

Client Review Status	Notes	Date / Description	Project Information
Approved		02/19/14	Arby's
Approved		02/19/14	Arby's
Approved		02/19/14	Arby's
Approved		02/19/14	Arby's
Approved		02/19/14	Arby's
Approved		02/19/14	Arby's

Allen Industries
Architectural Signage Division
P.O. Box 1000, St. Louis, MO 63103
Phone: 314.291.2200 Fax: 314.291.4222
Because Image is Everything



CHASE BANK ELEVATIONS



CHASE BANK ELEVATIONS



1 EAST ELEVATION - RURAL LOOP/MARKET SIDE
96' x 102'

- TO FINISH 17'-0"
- TO FINISH 17'-0"
- TO FINISH 17'-0"
- TO FINISH 12'-0"
- TO FINISH 10'-0"
- TO GRADE 0'-0"



2 WEST ELEVATION - DRIVE/PARKING
96' x 102'

- TO FINISH 17'-0"
- TO FINISH 17'-0"
- TO FINISH 17'-0"
- TO FINISH 12'-0"
- TO FINISH 10'-0"
- TO GRADE 0'-0"

TEXTURED BROWN STONE
COLOR: C-18/FAKAL

DARK BROWN PAINT
COLOR: 10/21/85

DARK BROWN PAINT
COLOR: 10/21/85

PAINT COLOR: DARK BROWN
COLOR: 10/21/85

PAINT COLOR: LIGHT BROWN
COLOR: 10/21/85

PAINT COLOR: LIGHT BROWN
COLOR: 10/21/85

BANK ATM ELEVATIONS

CHASE

Signature Canopy CAN-ATM-SIG

Sign Code Nomenclature:

- CAN-ATM-SIG-OCT
- CAN-ATM-SIG-OCT-HW
- CAN-ATM-SIG
- CAN-ATM-SIG-HW

Colors/Materials:


- Approach Column, Chase Dark Nickel, MP18246
- Canopy, Chase Blue, MP49353
- Departure Column, Chase Dark Nickel, MP18246

Illumination:

- 2x7" Security Lights only - rest of Canopy on Photo Cell
- Chase logo on approach
- Chase octagon on top

Notes:

- Although not preferred, the Chase octagon above the roof can be eliminated if required to meet code restrictions.
- The Drive-Up Canopy can also be used at locations where the ATM has to be located in the parking lot.
- Headache bar with clearance height displayed - used in conjunction with canopy to protect the structure and vehicles.
- Drive-Up toppers and signhouses with a Signature canopy uses LED lighting in topper.
- Canopy will use either a topper or signhouse depending on site.



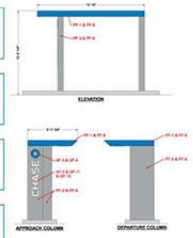
Original Issue Date: 04/04/2011 Current Revision Date: 11/15/2017

CHASE

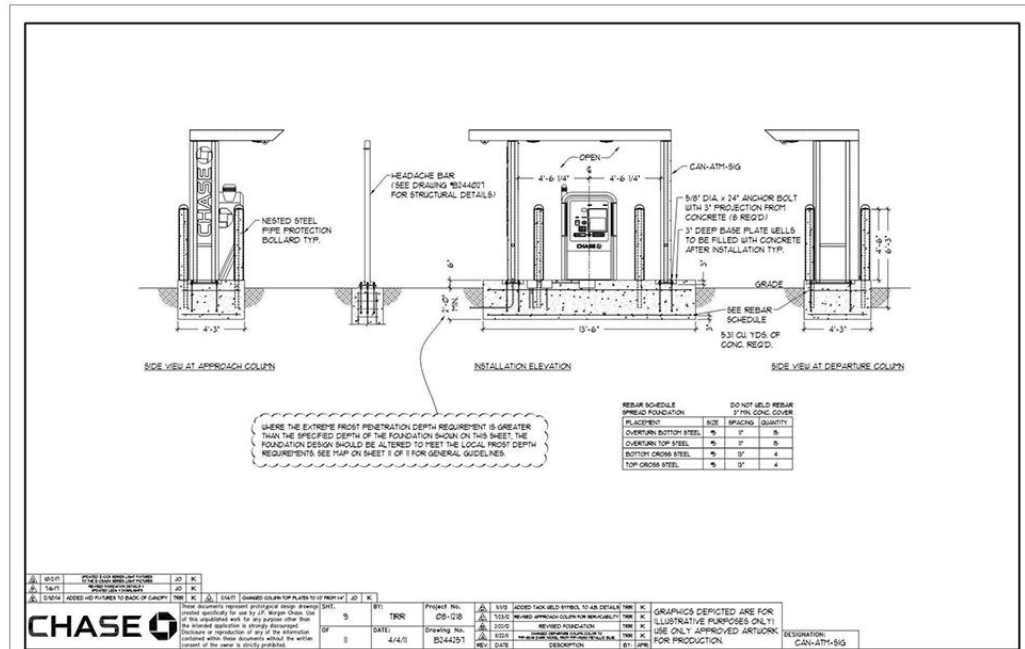
Signature Canopy without Octagon CAN-ATM-SIG

Finishes

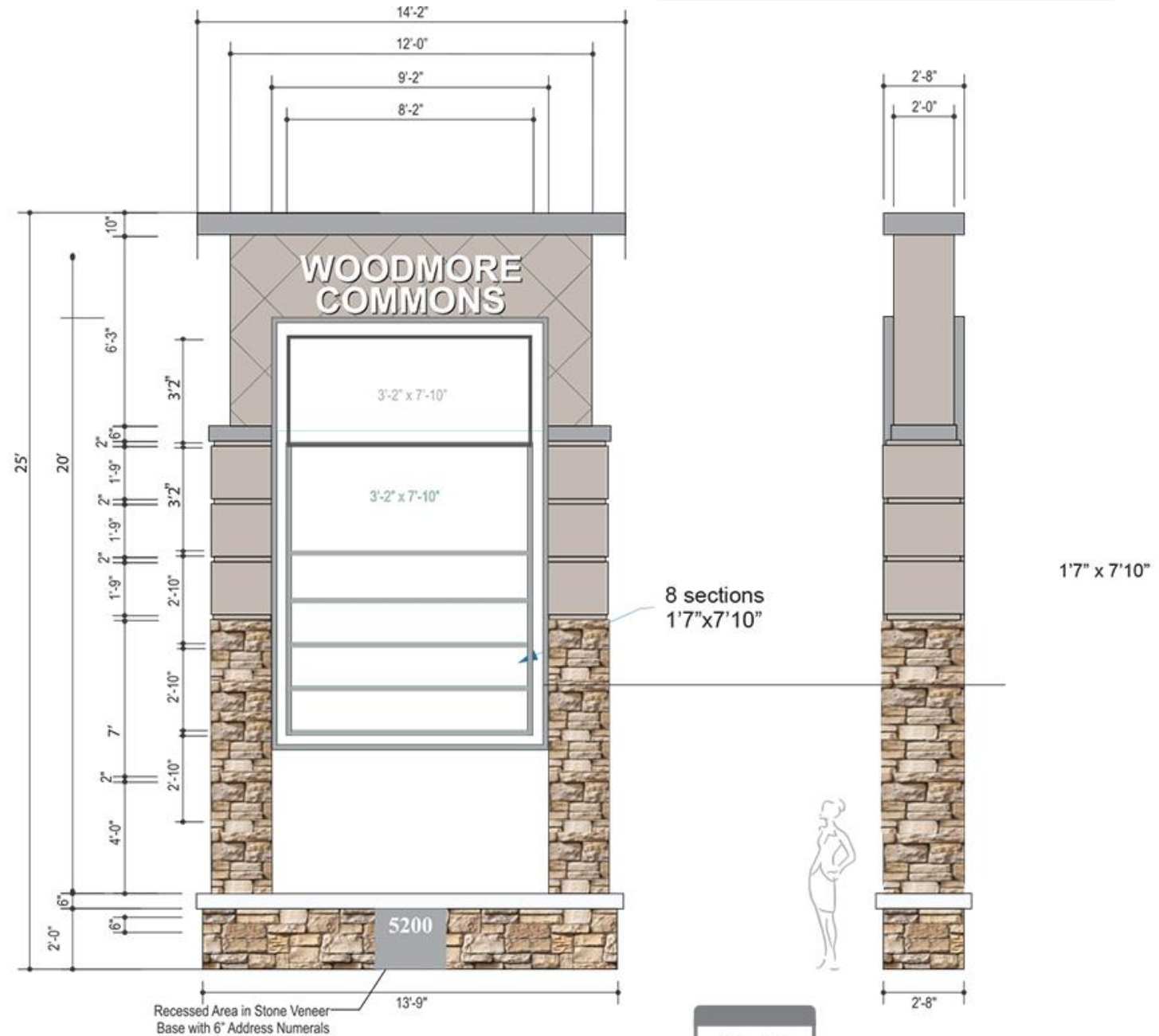
Key:	PF-1	
Product Number:	Mathews Paint 49353	
Key:	PF-3	
Product Number:	Mathews Paint 18246	
Key:	PF-9	
Description:	Clear Coat	
Finish:	Clear Coat	
Key:	AF-3	
Key:	GF-4	
Product Number:	3M 3632-127	
Key:	GF-10	



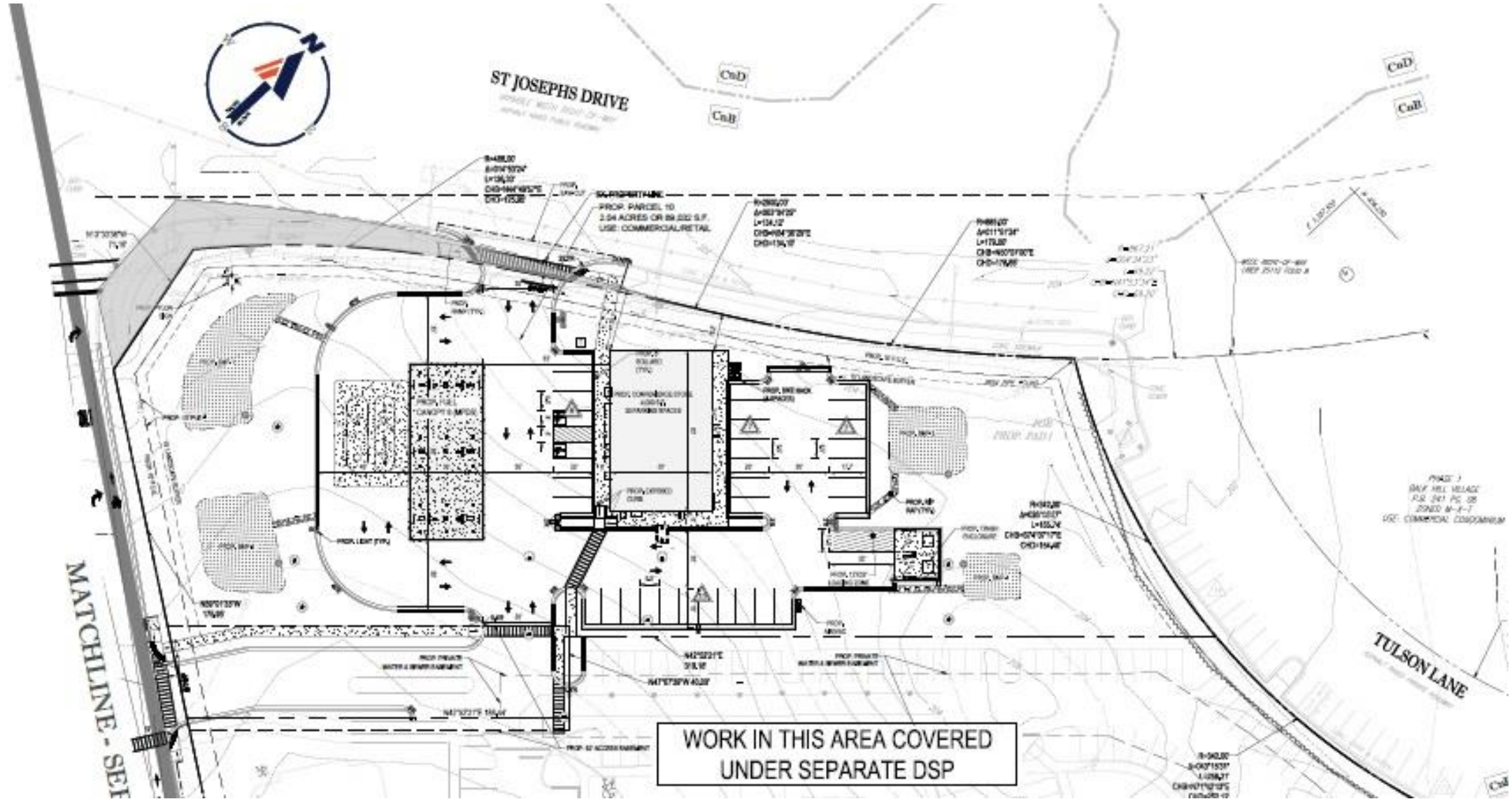
Original Issue Date: 04/04/2011 Current Revision Date: 11/15/2017



GATEWAY SIGN

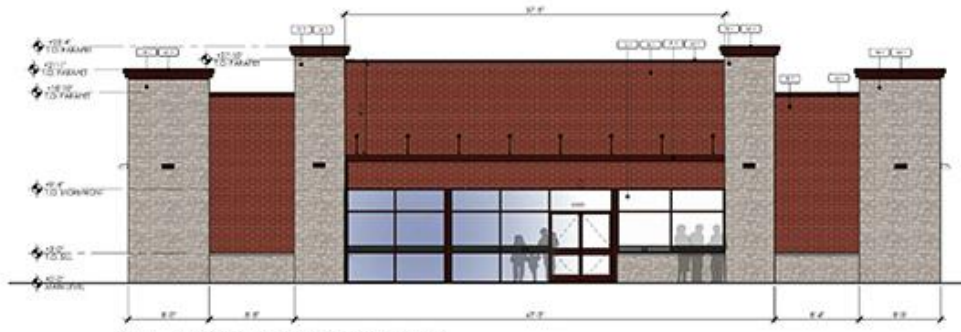


SITE PLAN - EASTERN SECTION



WORK IN THIS AREA COVERED UNDER SEPARATE DSP

7-11 ELEVATIONS



01 FRONT (SOUTH-WEST) ELEVATION
3/16" = 1'-0"

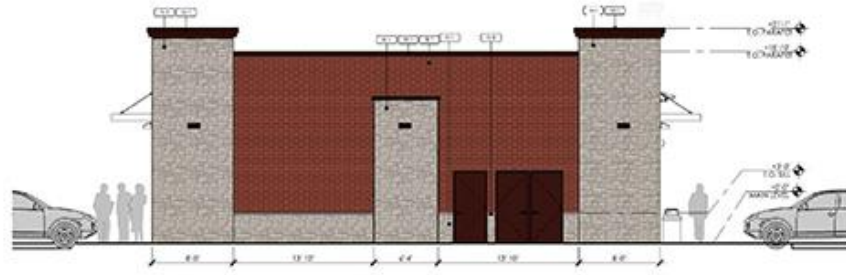
EXTERIOR FINISH SCHEDULE

NOTE: SKIN AND COLOR MATCH COLOR OF ADJACENT MATERIAL BEING REPLACED. WHEN 2 OR MORE COLORS ARE ADJACENT MATCH HEAVY COLORED MATERIAL.

FINISH	MATERIAL	FEATURE
R-1	24 GAUGE GALV. SHEET METAL COPING CAP, 3/8" X 1" FOR ROOF. THE FINISHES TO MATCH CANOPY AND COME WITH MOUNTS (IN THE URBANE MONET - OR SIMILAR)	
R-2	PREPARED SHEET METAL DORMER SYSTEM AND PRE-FABRICATED KANGAS TO MATCH CANOPY AND COME WITH MOUNTS (IN THE URBANE MONET - OR SIMILAR)	
R-3	MCMRA PANEL SYSTEM WALL FINISH - SEDGEBONE - BUFF OR DUSK	
R-4	FIRE CURD CONCRETE WALL	
G-1 & G-2	KANGAS "DARK BRONZE" ALUMINUM STOREFRONT FINISH - 1" INSULATED CLEAR GLAZING BY GLOCKSMITH OR EQUAL - OR EQUAL	
R-5	MCMRA PANEL SYSTEM WALL FINISH - ALEXANDRIA RED-BUFF	



02 SIDE (NORTH-WEST) ELEVATION
3/16" = 1'-0"



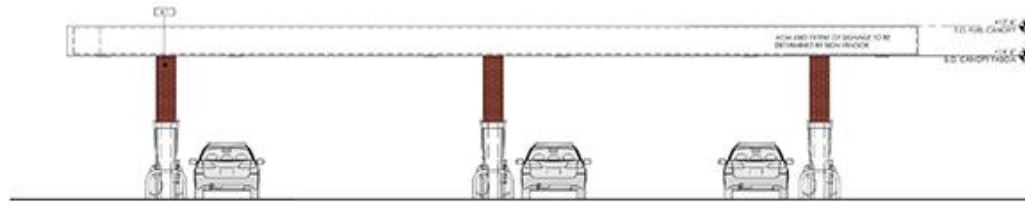
03 SIDE (SOUTH-EAST) ELEVATION
3/16" = 1'-0"



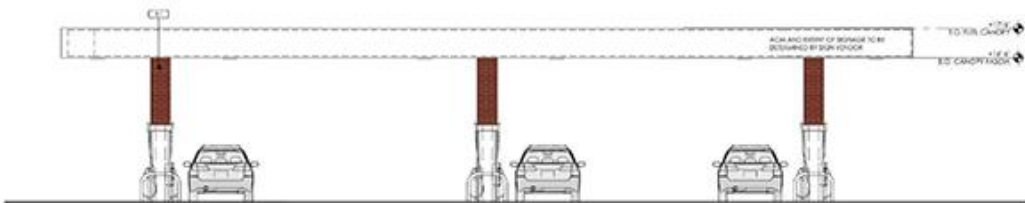
04 REAR (NORTH-EAST) ELEVATION
3/16" = 1'-0"



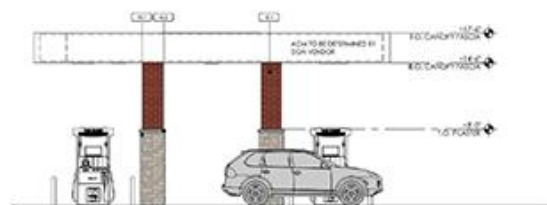
7-11 ELEVATIONS



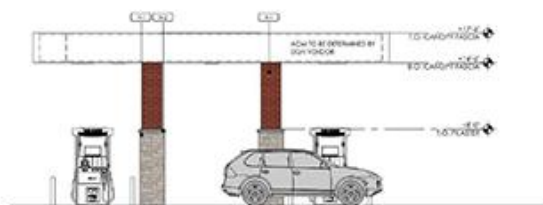
01 FRONT FUEL CANOPY (NORTH-EAST) ELEVATION
3/16" = 1'-0"



02 FRONT FUEL CANOPY (SOUTH-WEST) ELEVATION
3/16" = 1'-0"



03 SIDE FUEL CANOPY (NORTH-WEST) ELEVATION
3/16" = 1'-0"



04 SIDE FUEL CANOPY (SOUTH-EAST) ELEVATION
3/16" = 1'-0"

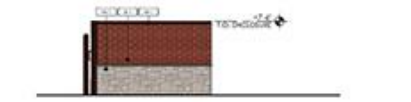
EXTERIOR FINISH SCHEDULE		
NOTE: GENERAL COLORS MATCH COLOR OF ADJACENT MATERIALS BEING SCHEDULED. WHEN 2 OR MORE COLORS ARE APPLICABLE, MATCH LIGHTER COLOURED MATERIAL.		
FINISH	MATERIAL	NOTES
W-1	3/8" SQUARE SMOOTH SHEET METAL COPING SLIP. SLOPE TO PER FOOT FALING TO MATCH CHIMNEY AND OTHER WITHIN WORKS (OR 1/8" PER SQUARE METRE) - OR SIMILAR	
P-1	PREPARED SHEET METAL JOINTWORK SYSTEM AND PRE-FABRICATED JOINTS TO MATCH CHIMNEY AND OTHER METAL WORKS (OR PER MANUFACTURER'S INSTRUCTIONS)	
N-1	NICKERIA PANEL SYSTEM WITH FINISH: LIGHTSTONE, 'BLUFF' OR SIMILAR	
N-2	PRE-CAST CONCRETE SILL	
S-10.0	ALUMINUM 'GASKET' MOUNTED ALUMINUM EXTERIOR FINISH FRAME - 1" INSULATED GLASS UNITS BY QUICCASTLE OR EQUAL - OR SIMILAR	
S-1	NICKERIA PANEL SYSTEM WITH FINISH: BURNISHED RED BUFF	



05 FRONT TRASH ENCLOSURE ELEVATION
3/16" = 1'-0"



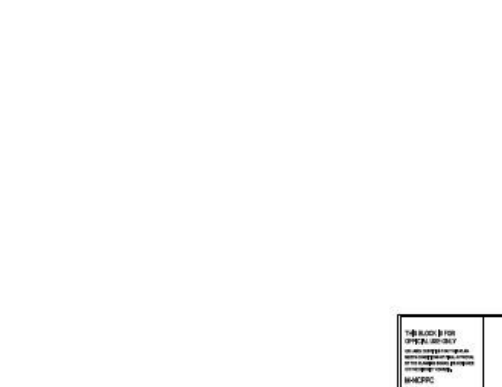
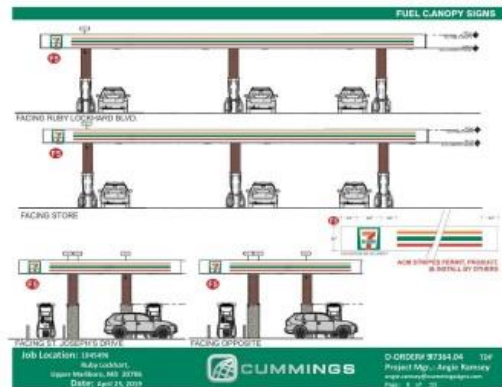
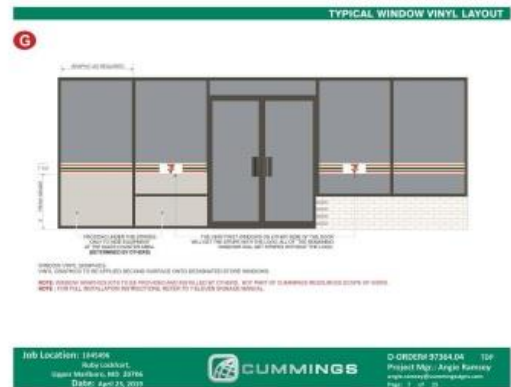
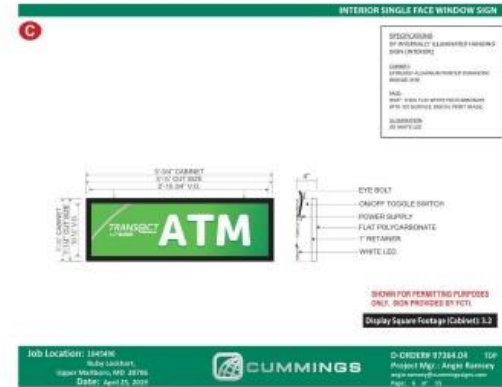
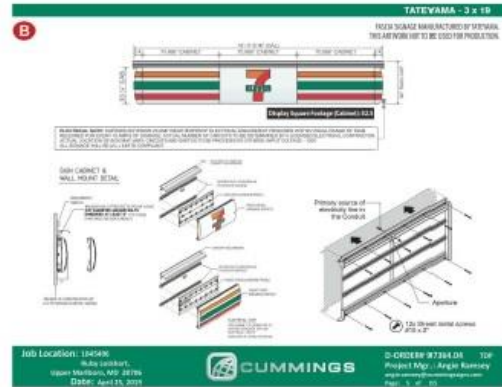
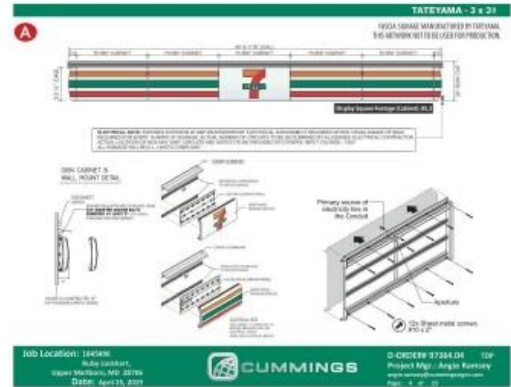
06 REAR TRASH ENCLOSURE ELEVATION
3/16" = 1'-0"



07 SIDE TRASH ENCLOSURE ELEVATION
3/16" = 1'-0"



7-11 SIGNAGE



7-11 SIGNAGE

CANOPY SIGN 3X3

F5

- DOUBLE END INTERNALLY ILLUMINATED CANOPY SIGN
- LED LIGHT SOURCE
- ALUMINUM CABINET FINISHED WHITE
- 1" ALUMINUM ELIMINATED FINISHES
- FORMED AND ENDED POLYCARBONATE PANELS
- 1/2" ALUMINUM FINISHES

Job Location: 1949W Ruby Lockhart, Upper Marlboro, MD 20776
 Date: April 23, 2021

CUMMINGS D-ORDER# 97354.04 TSP
 Project Mgr.: Angie Ramsey
 Date: September 8, 2019

M-37 DF PYLON SIGN

P

SCALE: 1/4" = 1'-0"

- DOUBLE END INTERNALLY ILLUMINATED Pylon SIGN
- LED LIGHT SOURCE
- FORMED AND ENDED POLYCARBONATE PANELS
- 1/2" ALUMINUM FINISHES

Job Location: 1949W Ruby Lockhart, Upper Marlboro, MD 20776
 Date: September 8, 2019

CUMMINGS D-ORDER# 97354.05-A TSP
 Project Mgr.: Chantelle Marie
 Date: September 8, 2019

DF DIRECTIONAL SIGNS

D

Job Location: 1949W Ruby Lockhart, Upper Marlboro, MD 20776
 Date: April 23, 2021

CUMMINGS D-ORDER# 97354.04 TSP
 Project Mgr.: Angie Ramsey
 Date: September 8, 2019

SITE PLAN

Job Location: 1949W Ruby Lockhart, Upper Marlboro, MD 20776
 Date: April 23, 2021

CUMMINGS D-ORDER# 97354.04 TSP
 Project Mgr.: Angie Ramsey
 Date: September 8, 2019

