

# Legend

## CORRIDORS

- Central US-1 Corridor
- Gateway Arts District

## GENERAL PLAN 2035 CENTERS

### Regional Transit Districts

- Regional Transit District

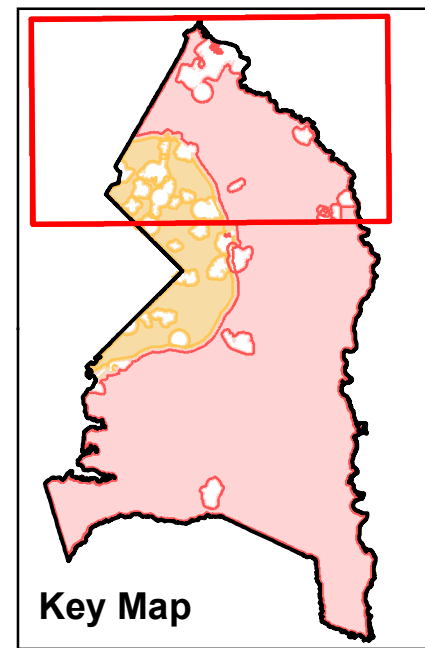
### Local Centers

- Local Transit Center
- Town Center
- Neighborhood Center
- Campus Center

## IMPACT AREAS\*

- Inside Capital Beltway
- Outside Capital Beltway

\* Shaded areas only. "Inside/Outside Capital Beltway" as defined by the County Zoning Ordinance.



0 0.5 1 2 3 Miles

