



Angela D. Alsobrooks  
*County Executive*

# HEALTH DEPARTMENT

Prince George's County

# Prince George's County Council

## Board of Health

# Health Department Overview

Presented by: Dr. Matthew Levy, MD, MPH

Health Officer

February 13, 2024

# Vision

***All Prince Georgians are their healthiest  
at every age and every stage.***



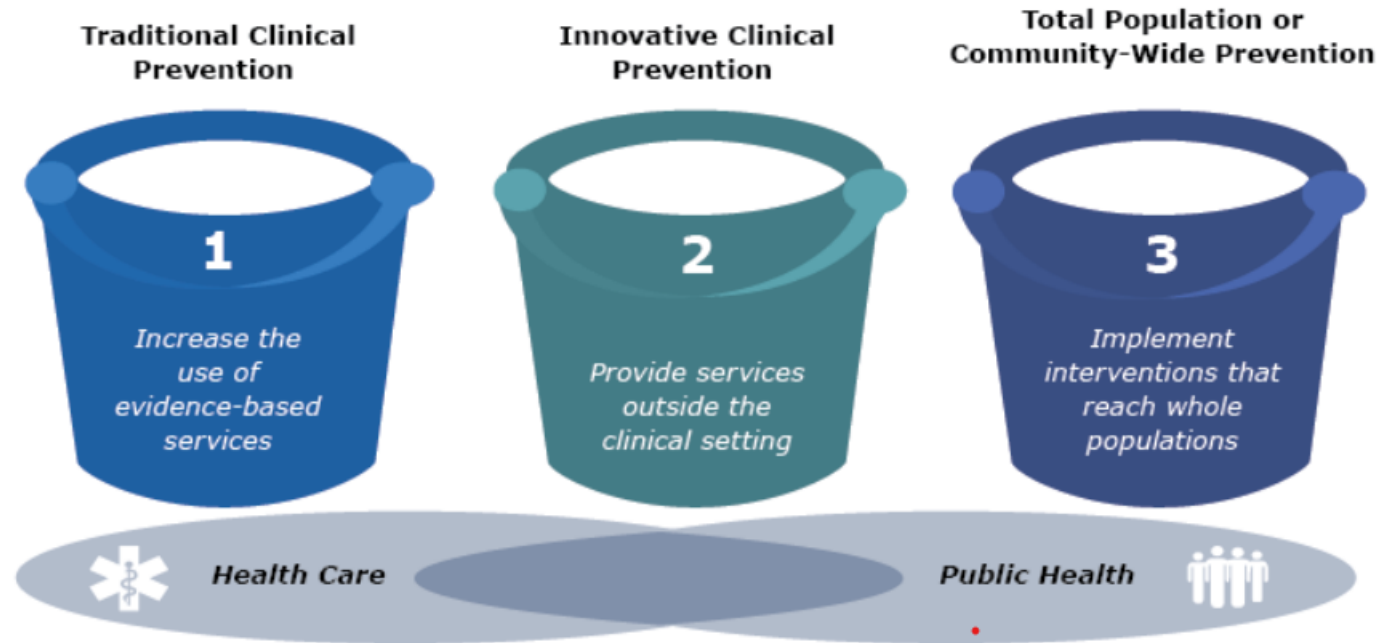
***To lead, engage, and empower our community to work collaboratively towards disease prevention, health equity, and total well-being.***

# OUR VALUES



- ***Equity, diversity, and inclusivity*** that reflects and supports all Prince Georgians.
- ***Respect and a commitment*** to caring for our community and each other.
- ***Teamwork*** in building a better future together.
- ***Accountability and Integrity*** to our teams and in our work.
- ***Innovation*** in driving change and seeking new solutions.
- ***Excellence*** in driving us toward achievement

# Public Health 3.0



To read more: <http://journal.lww.com/jphmp/toc/publishahead>



# Public Health 3.0

## 1. Embrace the Role of the Community Health Strategist

- The Community Health Strategist is integral to coalition-led efforts that transform public health.

## 2. Cultivate Cross-Sector Partnerships

- Engage with public and private community partners to diversify resources and foster collective action.

## 3. Consider Accreditation

- Pursuing accreditation could help local health departments implement Public Health 3.0.

## 4. Document Success with Data and Metrics

## 5. Enhance Public Health Funding

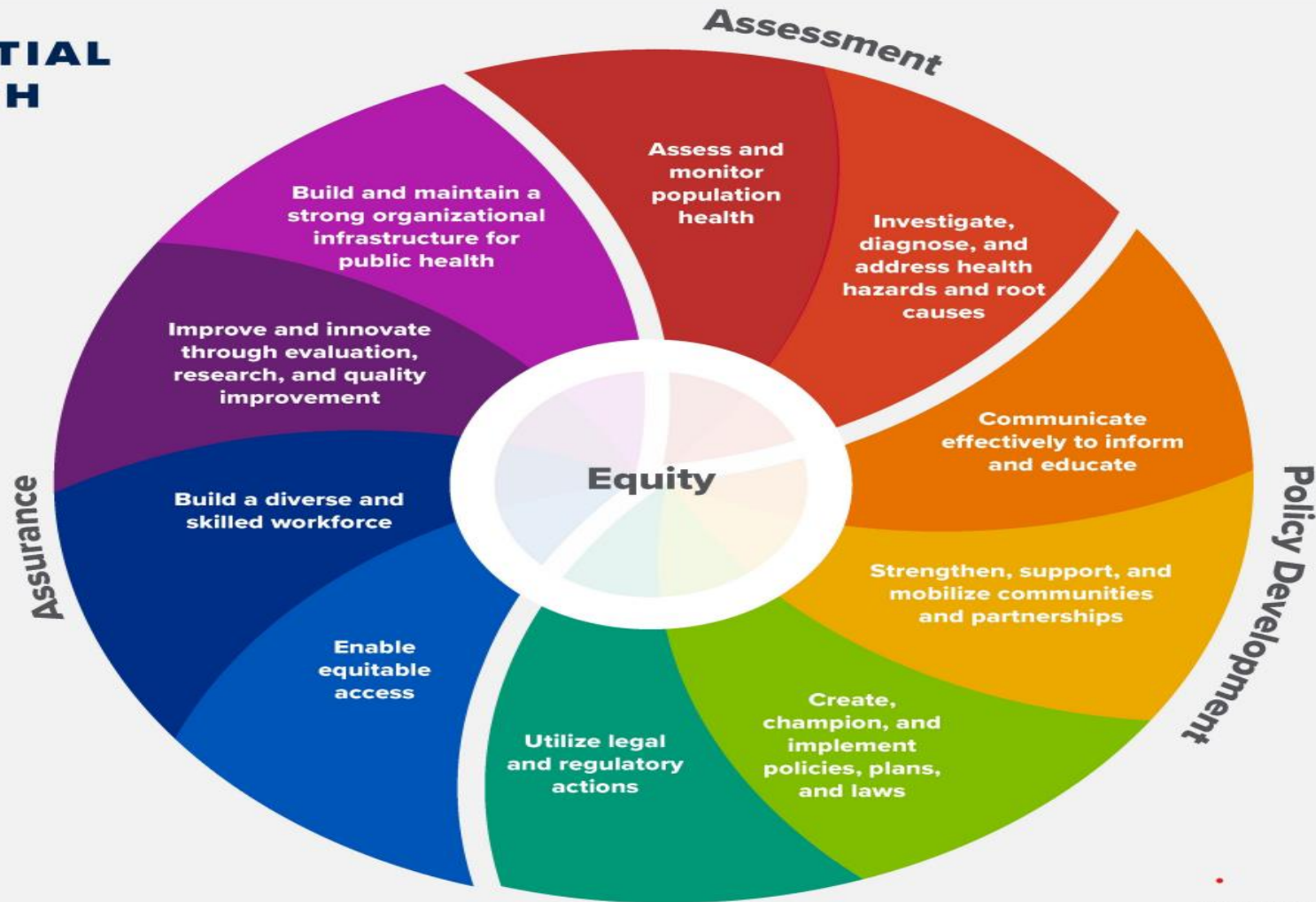
- Funding for public health should  ed and innovative funding models should be explored

# Public Health Essential Services

## THE 10 ESSENTIAL PUBLIC HEALTH SERVICES

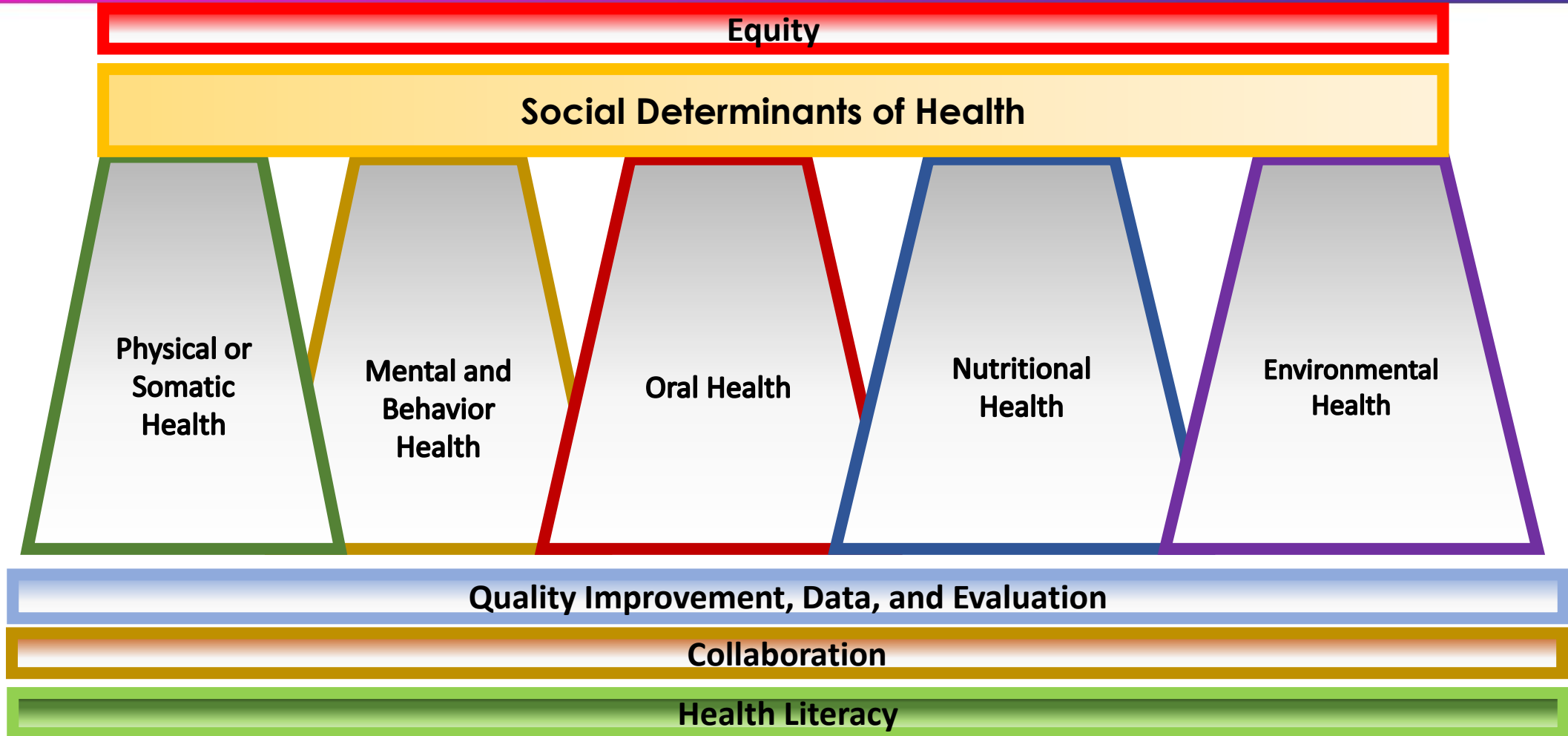
*To protect and promote the health of all people in all communities*

The 10 Essential Public Health Services provide a framework for public health to protect and promote the health of all people in all communities. To achieve optimal health for all, the Essential Public Health Services actively promote policies, systems, and services that enable good health and seek to remove obstacles and systemic and structural barriers, such as poverty, racism, gender discrimination, and other forms of oppression, that have resulted in health inequities. Everyone should have a fair and just opportunity to achieve good health and well-being.



Created 2020

# Six Pillars of Health





# Strategic Planning

## PLANNING & APPROACH

- Identify facilitator
- Finalize implementation timeline
- Organize and engage key stakeholders; establish workgroups/committees
- Schedule work sessions

- TARGET
- KICKOFF  MARCH 2024

## KEY ELEMENTS

- Coordination w/ BOH
- Community Engagement
- Alignment w/ HD's New Vision, Mission & Core Values
- Alignment w/ CEX Proud Priorities
- Alignment w/ BOH Priorities

## END PRODUCT

- A Comprehensive 5-YR Plan that captures where the HD wants to go and what we envision and reflects the priorities and needs of the community that the HD serves.

# Public Health Accreditation

- **What is Accreditation?** Since 2011, the Public Health Accreditation Board (PHAB), funded by CDC and RWJF, has been accrediting local, state, and tribal health departments.
- **What is measured?** The measurement of health department performance against a set of **nationally recognized, practice-focused and evidenced-based standards.**
- **Why obtain accreditation?** It serves as a “vehicle to transparency and trust in public health. The community can feel confident that their health department (is providing) Foundational Capabilities and meeting national standards for performance and quality” (PHAB).

**Plan to start**

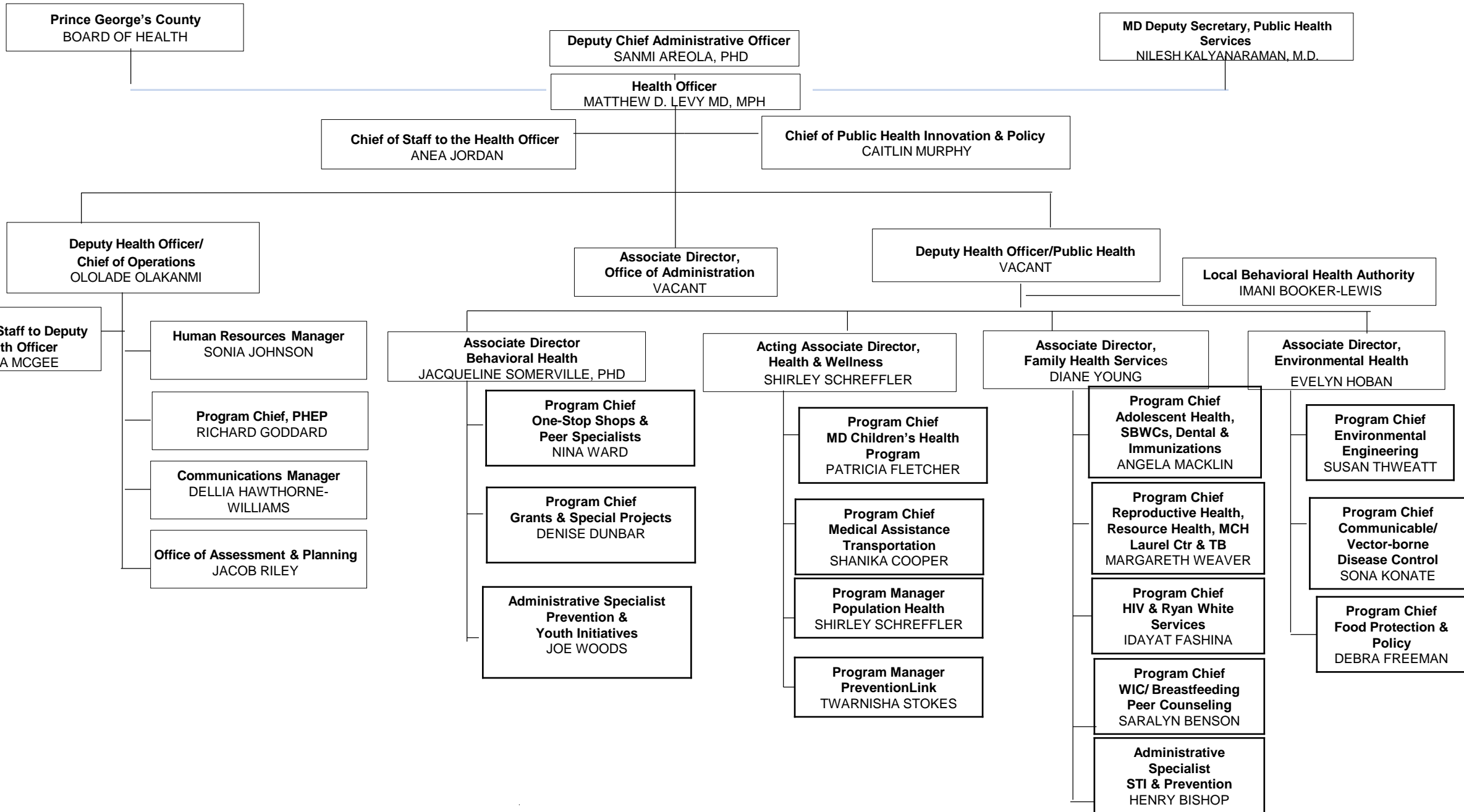


**FY25**

# Public Health Accreditation - Accredited Health Departments in Maryland

- Alleghany County
- Baltimore City
- Baltimore County
- Cecil County
- Frederick County
- Garrett County
- Harford County
- Howard County
- Montgomery County  
Department of Health and  
Human Services
- St. Mary's County
- Wicomico County
- Worcester County
- Maryland Department of Health

# PRINCE GEORGE'S COUNTY HEALTH DEPARTMENT



# Behavioral Health Division Programs

## Prevention and Youth Initiatives

### Prevention

- Prevention Grant
- OCCC/MOOR Block Grant
- OCCC/MOOR Competitive Grant
- Naloxone Training
- Tobacco Programs
- Opioid Restitution Funding

### Youth Initiatives

- Bridges to Success
- Adolescent Clubhouse

## Grants and Special Projects

### Grants

- System of Care (SAMSHA funded)
- Health Transitions (SAMSHA funded)

### Special Projects

- Youth Mental Health Expo
- Trauma Learning collaborative
- Emerging Leaders Initiative
- Behavioral Health Crisis Data-Dashboard

## Assessment, Linkage, and Treatment Services

### Assessment, Screening & Linkage

- Hospital Diversion Liaison
- TCA, HB7, SB512
- Assessment & Case Management
- Problem Solving Courts
  - Drug Court
  - Mental Health Court

### Treatment

- Northern Region Addictions (Level 1 Outpatient Opioid Adult Treatment- MAT)

## “One-Stop Shops” and Peer Specialists

### “One-Stop Shops”

- Langley Park Multi-Cultural Center
- Bridge Center at Adams House
  - Adult Reentry Program (SAMSHA)

### Peer Programs

- Peer to Peer Initiatives

### Community Case Management

- SUD Case Managers

# Environmental Health/Disease Control Division Programs

Provide core public health services, Enforce COMAR and local county codes:

**Food Protection Program:** Restaurants, school kitchens, institutional kitchens, mobile units, fairs, special events, food service training for non profits

**Environmental Engineering Program:** Percolation tests, wells, on-site sewage disposal systems, public swimming pools, health impact assessments, lead and asthma prevention program

**Communicable Disease Program:** Investigate water, food, vector borne and communicable disease outbreaks, rabies program, hepatitis b infant and mother outreach

# Family Health Services Division Programs

## Maternal and Child Health Services

- WIC (Supplemental Nutrition and BreastFeeding Support)
- Healthy Beginnings
- Pediatric Primary Care
- Health Assures

## Immunizations:

- Adult Immunizations and Vaccines for Children (VCF)

## Reproductive Health, Family Planning, Sexual Health

- *Sexual Health, Family Planning and Reproductive Health Integration*
- Ryan White Services: Ambulatory Medical Care & Support Services
- STI Surveillance, Prevention and Treatment

## TB Surveillance, Treatment and Control

## Oral Health Services:

- Prophylaxis, Restoration & Limited Dental Appliances

# Health and Wellness Division Programs

## Chronic Disease Program

- Diabetes Prevention Program
- Chronic Disease Self-Management Program
- Diabetes Self-Management Program

## Evaluation & Monitoring

### *Adult Evaluation and Review Services (AERS)*

- Conducts assessments for county residents at risk of Nursing Home placement

### *Nurse Monitoring Program*

- Assesses and ensures the quality of personal assistance services for residents in Medicaid programs such as Community First Choice (CFC), Community Personal Assistance (CPAS)

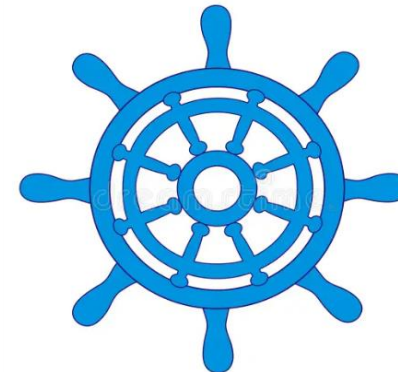
## Health Promotions and Health Education

- Utilizes Community Health Workers as an intervention
- Addresses social determinants of health
- Provides care coordination services
- Actively participates in community events



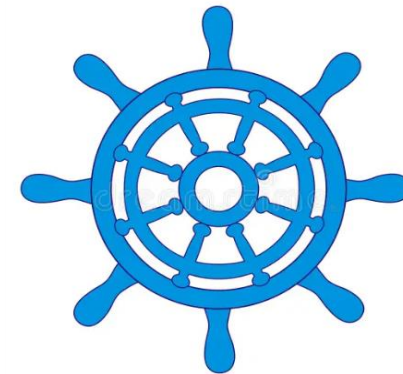
# Health Outcomes and Investments

- Provide main findings of the CY 2022 Health Assessment (CY 2023 if the Department has updated information), and report on how the identified health gaps, disparities and priorities are being addressed by the Health Department and other healthcare stakeholders.
- Health Department as a lead
  - Office of Assessment and Planning



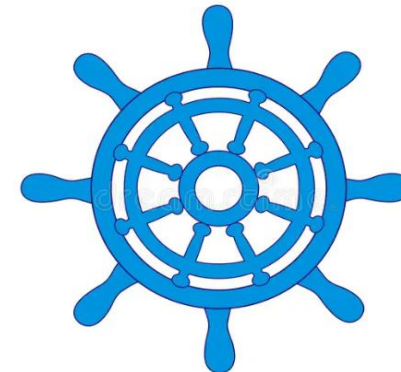
# Maternal and Infant Health

- Learn what the concepts of maternal and infant health encompass and how maternal and infant health outcomes are typically measured. Explore national, State, and most importantly local data on maternal and infant health and identify key discrepancies. Explore how the identified health disparities are being addressed by the Health Department and other healthcare stakeholders
- Health Department as a lead
  - Family Health Services



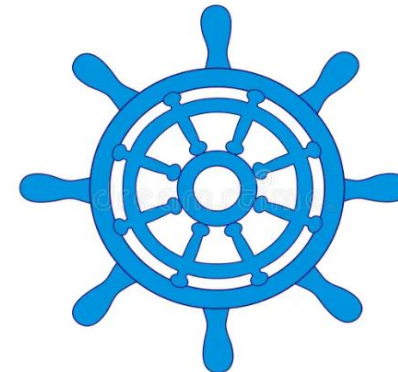
# Behavioral Health: Crisis Response in the County

- Assess the current state of crisis response in the County, which includes call processing/diversion, response (including operations of the Mobile Response Teams) and obtaining crisis stabilization services. Over the past two years there have been some changes in Crisis Response and attempts to divert qualifying 9-1-1 calls for service to appropriate behavioral health focused response. How well is the current Crisis Response model working? What does the data tell us? What impediments persist? What improvements can be made?
- Health Department as a lead
  - BH/LBHA Division oversight



# Continuity of Effort: Response to the Community Concerns Raised Via the Mental Health Townhall

- On November 7, 2023, the BOH held a Mental Health Townhall where a range of community concerns have been identified. This is an opportunity to provide a response to the identified concerns.
- Health Department as a lead
  - BH/LBHA Division oversight



# Health Equity through Health in All Policies

- Provide an overview of the Assessing Health and Human Services Needs to Support an Integrated Health in All Policies Plan for Prince George's County, Maryland (RAND Report); review the concepts of health equity and HiAP; identify what is needed to move forward with establishing the HiAP framework to achieve a greater health equity in the County.
  - Health Department as a partner with County Government

# Healthcare Landscape (Community Asset Mapping)

- Health assessments focus on health outcomes and there is a gap in knowledge regarding the changes in the outputs, i.e. which healthcare resources are actually available to influence healthcare outcomes. Healthcare asset mapping will examine the number of hospital beds, nursing homes, hospices, healthcare providers and other measures to help gauge which healthcare resources are available in the County.
- If multi-year data is not available, then this can serve as a baseline assessment that can be used to monitor future changes in the County based healthcare assets.
  - Health Department as a partner with County Government, 211 and other county outreach agencies.
  - Regarding healthcare deficits, HURON report was a first step.

# Addressing SDH: Investing in Housing is Investing in Health

- Safe and stable housing is a critical factor in achieving positive health outcomes. Physical and social characteristics of neighborhoods and housing characteristics: stability, quality, safety, and affordability affect health outcomes. How can the County leverage health and housing resources to achieve improved health outcomes through housing?
- Housing under the Department of Social Services
- Health Department as a partner
  - ACIS program in Department of Health

# Land Use Policies and Health

- Built environment and natural environment have a direct impact on health and well-being: housing quality, housing stability, housing affordability, overcrowding, access to healthy food choices, access to recreation and fitness, walkability, green spaces, air quality, water quality and exposure to environmental toxins are directly connected to health. Review the interconnectedness of land use policies, planning and zoning on health. Issues of loneliness and social connectedness, healthy food options, State regulations, health impact assessments and others are to be examined.
- Health Department-outside direct jurisdiction
- Health Department as a partner
  - Environmental Health, Health and Wellness



# Understanding and Overcoming Barriers to Establishing Healthcare Practices in the County

- Prince George's County lags behind State averages with regards to the ratio of clients to a primary physician, as well as dentist and behavioral health practitioners. It is necessary to understand what prevents practitioners to open practices in the County in order to effectively address these impediments and increase availability and accessibility of quality healthcare in the County.
  - Health Department as an influencer and partner
    - HURON Report as a starting point
  - County Government; State Government; MDH
  - Health Systems and FQHCs

# Models of Providing Emergency Medical Services

- Provision of emergency medical services comprises 80% of the Prince George's County Fire/EMS Department's work. Fire/EMS Department is the largest County funded healthcare service delivery vehicle. There are different models of providing emergency medical services, could learning about other models provide potential valuable insights and options for Prince George's County future emergency medical services operations?
- Health Department-outside of jurisdiction
- Health Department as a partner

# Continuity of Effort: Emergency Room Wait Times

- Provide an update as to what is being done at the local and State levels to address the long emergency room wait times issue. This is a short status update; a formal presentation can be done but is not necessary. Status update from last year.
- Health Department as a convenor, partner and influencer

# Expectations of Health Department

- Partner in problem solving and public health strategy
- Reliable source of public health information and data
- Advocate for the public health needs of Prince George's County residents
- Convenor of health partners to solve problems
- Responsive thought partner with BOH and County Council

# Expectations of Board of Health

- Partner in problem solving
- Reliable source of community feedback
- Advocate for the public health needs of Prince George's County residents
- Thought partner in county needs



**HEALTH  
DEPARTMENT**  
Prince George's County

