



M-NCPPC, Department of Parks and Recreation, Prince George's County

PROPOSED BUDGET FY27

Parks & Recreation is an *Essential Service!*



April 16, 2026

OUR MISSION

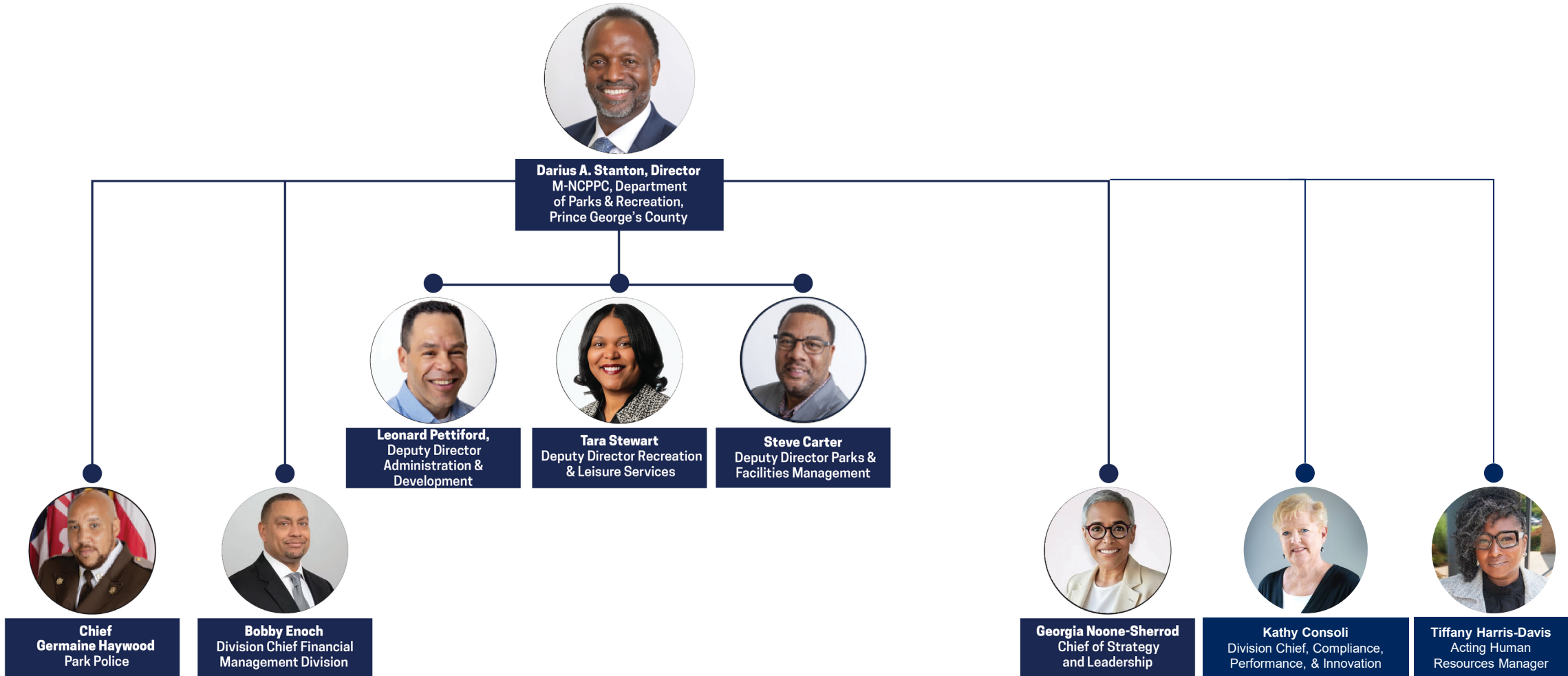
Parks & Recreation
is an *Essential Service!*

The mission of M-NCPPC, Department of Parks and Recreation, in partnership with County residents, is to provide comprehensive park and recreation programs, facilities, and services that support healthy lifestyles and respond to changing needs within County communities. The Department strives to preserve, enhance, and protect open spaces to enrich the quality of life for the present and future generations in a safe and secure environment.



OUR STRUCTURE

Parks & Recreation
is an *Essential Service!*



Parks & Recreation

M-N C P P C

live more, play more
with us!

pgparks.com



6
Gold
Medals



Find your FUN!



...and adding more every day!



With over 30,000 acres of parkland, M-NCPPC, Department of Parks and Recreation, Prince George's County has something for everyone!

*Includes Public Private Partnerships on M-NCPPC land. Information is accurate as of 03/2026.

FESTIVALS & EVENTS

Parks & Recreation
is an *Essential Service!*

The Department holds community & special events and more...

- ❑ American Indian Festival
- ❑ Active Aging Week
- ❑ **Hispanic Festival**
- ❑ Asian-Pacific American Heritage Programs
- ❑ B-Side at Bowie State University
- ❑ **Bikes and Lights**
- ❑ **Glow Walk**
- ❑ **Black History Month Programs**
- ❑ Celebrate Africa! Festival
- ❑ **Centenarian Celebration**
- ❑ Dallas Black Dance Theatre
- ❑ Echoes of the Enslaved
- ❑ **Festival of Lights**
- ❑ Hispanic Heritage Month Programs
- ❑ Jug Bay Run for Wildlife
- ❑ **Juneteenth**
- ❑ **Kinderfest**
- ❑ **Mis Quince Años**
- ❑ Shakespeare in the Parks
- ❑ Senior Health & Fitness Day
- ❑ Senior Line Dance Party
- ❑ Summer Concerts
- ❑ **STEAMFest**
- ❑ STEP Africa
- ❑ **Teen Cotillion**
- ❑ Teen Vocal Show Case
- ❑ In The Water Basketball
- ❑ **Trot For a Turkey**
- ❑ Un-Wine With Us
- ❑ Bladensburg Waterfront Arts Festival
- ❑ World Dance Showcase



COMMUNITY PARTNERS

Parks & Recreation
is an *Essential Service!*

- 17 For Peace and Justice
- 2for2Boobs
- 4-H Prince George's County
- Active Aces Super Senior Tennis Club (AASSTC, Inc.)
- Afro-American Historical and Genealogical Society, Inc. Prince George's County Chapter
- Alpha Phi Alpha Fraternity, Inc.; Kappa Epsilon Lambda Chapter
- Anacostia Trails Heritage Area Inc. (ATHA)
- Anacostia Watershed Citizens Advisory Committee (AWCAC)
- Anacostia Watershed Society
- APAKEL
- Apple Grove-Squires Woods Citizens Association (AGSWCA)
- Ardmore Springdale Civic Association
- Art Play Learn LLC
- ARTkids Inc
- Baltimore Adapted Recreation and Sports (BARS)
- Barnaby Manor Citizens Association
- Belair Seniors c/o Cheryl Sahin
- Beltsville Lions Club
- Beltsville Recreation Council
- Beltsville Strategy Games Club
- Beltsville Young at Heart
- Berkshire Civic Association
- Bernadette's House Inc.
- Berwyn District Civic Association
- Berwyn Heights Recreation Council
- Birchwood City/Clearview Manor Community Association
- Bowie Recreation Council
- Bowie-Upper Marlboro Bee Association (BUMBA)
- Boy Scout Troop #1673 - West Laurel
- Bradbury/Boulevard Heights Civic Association
- Brandywine North Keys Civic Association
- Broad Creek Historic District - Local Advisory Committee
- B-Roll Media & Arts Inc
- Brooke Road, Rollins Avenue, Walker Mill Road Civic Association (BRW)
- Caltor Manor Civic Association
- Calverton Recreation Council
- Capital Area Food Bank
- Central Civic Association (Wilburn Community)/ Wilburn Civic Association
- Characterville Entertainment LLC
- Chesapeake Woodturners
- Cheverly Recreation Council
- Chick-Fil-A (local store)
- Chillum Neighborhood Watch
- Chispa Maryland - Maryland LCV Education Fund
- Civil Air Patrol College Park Squadron
- Coalition of Central Prince George's County Community Organizations
- College Park Arts Exchange
- Community Advocates for Family & Youth (CAFY)
- Community Crisis Services
- Community Kinship Coalition, Inc.
- Community Youth Advance
- Concerned Citizens Civic Association of Lynnaln
- Court Appointed Special Advocate (CASA)/ Prince George's County
- Cub Scout Pack 1031
- Cub Scout Pack 1673 - West Laurel Civic Association
- Defensores de la Cuenca
- Delta Sigma Theta Sorority Ft. Washington Alumnae Chapter, Inc.
- District 3 & 8 Coffee Circle Meeting
- District V Citizens Advisory Council (the CAC)
- Easel Outreach
- Ebenezer A.M.E. Church
- Eighth Precinct Civic Association
- Employ Prince George's, Inc.
- Enterprise Estates Civic Association
- Eta Phi Beta Sorority, Inc.
- Ever-Evolving Solutions, Inc.
- Experimental Aircraft Association (EAA) Chapter 4
- Fairland Girls Booster Club
- Fairland Trampoline and Tumbling Booster Club
- Fairmont Heights High School Alumni Association
- Fairmont Park/North Englewood Civic Association
- Favor's Table
- Forestville Estates Civic Association
- Fort Washington Area Recreation Council
- Freestate Flying Club
- Freestate Happy Wanderers
- Fresh Anointing City of Refuge
- Friends of Montpelier
- Future Chess Champions, Inc.
- GATCCS
- Girl Scout Council of the Nation's Capital
- Glassmanor Citizen's Association
- Glenarden Pioneers
- Glenarden Track Club
- Good Intentions Foundation, Inc.
- Greater Glenn Dale Recreation Council
- Greater Kettering Area Recreation Council
- Greater Washington Softball Umpires Association
- Habitat for Humanity Metro Maryland, Inc. (HFHMM)
- Harmony Hall Chapter Daughters of the American Revolution
- Her Majesty Girls
- Hillcrest - Marlow Heights Civic Association (& Recreation Council)
- Hillside Civic Association
- Holly Hill Manor Civic Association
- Holy Cross Health
- Hyattsville Community Arts Alliance
- Hyattsville Community Development Corporation
- Hyattsville-Landover (MD) Alumni Chapter Kappa Alpha Psi Fraternity, Inc.
- Infinite Possibilities - International Culture Nature Community
- Interstate Commission on the Potomac River Basin
- Joe's Movement Emporium, World Arts Focus
- John Carroll Recreational Council
- Juanita C. Grant Foundation
- Kappa Alpha Psi Fraternity, Inc.
- Kentland Recreational Council (KRC)
- Kettering Civic Federation, Inc.
- Kiamsha Youth Empowerment Program
- Lake Arbor Foundation, Inc.
- Lakeland Civic Association
- Lakeland Community Heritage Project
- Landover Revitalization Coalition
- Langley Park Civic Association
- Laurel Art Guild
- Laurel Historical Society and Museum
- Laurel Senior Friendship Club
- Leadership Prince George's, Inc.
- Lewisdale Citizens Association
- Lincoln Vista Civic Association (and Recreation Council)
- Glenarden Pioneers
- Little Washington Civic Association
- Lyrical Storm
- Marlboro Area Recreation Council
- Maryland Citizens for the Arts
- Maryland Legal Aid
- Maryland Legal Aide Landover
- Mary's Center
- Millwood Community Association
- Millwood Community Homeowners Association
- Millwood-Waterford Citizen's Association
- Mind Expansion Community Services (MECS), Inc.
- Motivation Movement Ministries
- NAACP
- National Association of Rocketry Headquarters Astro Modeling Section (NARHAMS)
- National Coalition of 100 Black Women, Inc., Prince George's County Chapter
- National Rehabilitation Hospital/Medstar
- Nature Forward
- Negro League Legends Hall of Fame, Inc.
- New Carrollton Recreation Council
- Nia & Ntombi Adventures
- No Excuses Boxing Gym
- North Brentwood Citizen's Association
- Paint Branch Garden Club
- Palmer Park Civic Association
- Palmer Park Smash Incorporation
- Parents of Children with Down Syndrome (PODS) of Prince George's County
- Parkrun USA
- Patuxent Bird Club
- Peppermill Village Civic Association
- Police Districts VII and IV South County Community Roundtable
- Port Towns Community Development Corporation
- Port Towns Community Health Partnership
- Prince George's African American Museum & Cultural Center
- Prince George's Audubon Society
- Prince George's County Alumnae Chapter Delta Sigma Theta Sorority, Inc.
- Prince George's County Boys and Girls Clubs
- Prince George's County Herb Society
- Prince George's Running Club
- Prince George's Senior Providers Network
- Progressive Equestrian Therapeutic Services, Inc.
- Pursuing A Dream Corporation
- Que Kidz - Omega Psi Phi Fraternity, Inc. Gamma Pi Chapter
- Radiant Valley Civic Association
- Resource Connections
- Riverbend Citizens Association
- Riverbend Estates Neighborhood Association
- Riverdale Heights/Riverdale Hills/Crestwood Community
- Riverdale Park Recreation Board
- Riversdale Historical Society
- Rock Solid Entertainment Group
- Rollingcrest-Chillum Recreation Council
- Rosedale Estates Homeowners Association
- Roswilk Homeowner's Association, Inc.
- Seabrook Recreation Council
- Seventh Councilmanic District Constituent Fund Committee, Inc. (CDCFC)
- Sisters4Sisters, Inc.
- Skyline Citizens Association, Inc.
- South Laurel Recreation Council
- Southern Maryland Antique Arts Association
- Suburban Hospital
- Suitland Action Team
- Suitland Civic Association
- Suitland Recreation Council
- Talking Hands Incorporated
- Tanger Outlets National Harbor
- Tantallon Citizens Association
- Tantallon Community Players
- Tantallon North Area Civic Association
- Tantallon South Civic Association
- Tantallon Square Area Civic Association
- Templeton Knolls Civic Association
- The Arc, Prince George's County
- The Better Place c/o Shauna King
- The Choice Program
- The D.I.V.A. Movement Association, Inc.
- The Embry Center for Family Life
- The Martin Circle Of Hope Foundation, Inc.
- The Maryland Center at Bowie State University
- The Right Fit, Inc.
- The Surratt Society
- Tri-Area Civic Association
- University Park Civic Association
- Vansville Heights Civic Association
- West Lanham Hills Citizens Association
- West Laurel Civic Association
- West Laurel Recreation Council
- Westhampton Association, Inc.
- Westphalia UMC
- Whitfield Gardens Civic Association
- Willow Wood Estates Civic Association
- Women Offering Wealth
- Women's Community Club of Beltsville
- Woodlawn Homeowners Association
- Wyndham Woods Homeowners Association
- Yum Social Club

Operations

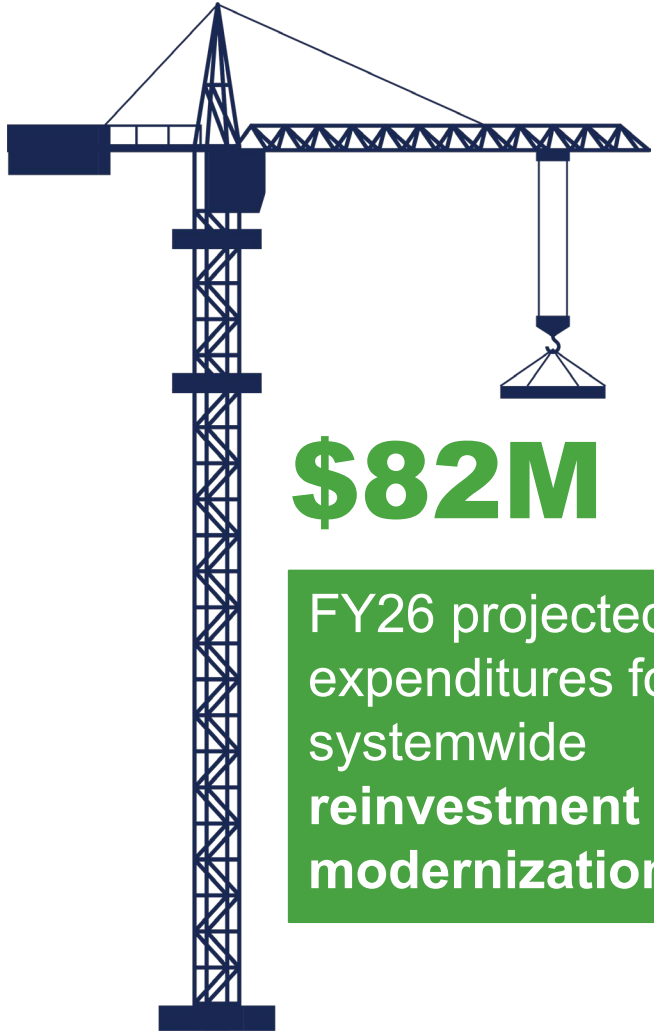
- ✔ The Compliance, Performance & Innovation Division was created to continue the Department's efforts to strengthen our endeavors in performance and compliance measurement, ADA compliance, CAPRA Standards and performance metrics.
- ✔ The Financial Management Division was created to strengthen our commitment to efficient management and responsible financial stewardship. This division amplifies the capacity of the budget office, including a properly scaled and well-managed project charges function to help create opportunities to partner with non-profits that share our mission, extending our impact throughout the community.



Awards, Recognition, and Compliance

- ✔ Honored as a finalist for the **National Gold Medal Award for Excellence in Park and Recreation Management** for the **eighth time**, reflecting sustained organizational excellence.
- ✔ Successfully achieved **reaccreditation from the Commission for Accreditation of Park and Recreation Agencies (CAPRA)**, demonstrating **100% compliance with 154 industry standards**.
- ✔ The **Maryland-National Capital Park Police, Prince George's County Division** received **reaccreditation from the Commission on Accreditation for Law Enforcement Agencies (CALEA)** and earned the **Meritorious Award** for maintaining **28 consecutive years of accreditation**.
- ✔ Received the **2026 Casey Trees Canopy Award** for leadership in urban forestry, sustainability, and partnerships.





\$82M

FY26 projected CIP expenditures for systemwide reinvestment and modernization.

Capital Investment & Renovation Projects

- ✔ Completed **67 projects**
 - ❖ 18 playgrounds, 6 field upgrades,
 - ❖ 17 pavilion replacements,
 - ❖ airfield runway improvements,
 - ❖ stadium amenity enhancements,
 - ❖ a new boat landing,
 - ❖ restoration to **7 historic sites**,
 - ❖ ADA upgrades,
 - ❖ and 3 acquisitions.
- ✔ Renovated **18 athletic fields** to support safe, high-quality recreation.
- ✔ Prince George's Stadium renovation (**42 million**) including new state of the art performance training center.

Accessibility & Inclusion

- ✔ Delivered ADA Title II digital accessibility training ahead of the Apr 24, 2026 compliance deadline—**36 sessions for 500+ users** with 3,000 total sign-ins.
- ✔ Provided over **30,000 hours** of assistance to **2,461 individuals** and trained more than **2,000 staff on disability support.**



Residents view the Department's services as widely equitable and accessible—66% rating them *very or mostly equitable.*



“ I am a PG County resident, and I am here at Kid's Day at the National Harbor, presented by M-NCPPC, Department of Parks and Recreation, Prince George's County. I bring my 2-year-old and 4-year-old almost every week. We absolutely love it, they have lots of activities, there is tons of engagement, and I love that each week there is a different experience. So, they get a chance to learn about different things in the community and have fun with kids their own age. ”

-Ms. Davis, Kid's Day at National Harbor

Communications & Technology

- ✔ Completed a department-wide Unified Communications as a Service (UCaaS) needs assessment across 9 locations; confirmed ~90% of internal communications occur in Teams; defined gaps, roadmap, and began procurement for implementation services.
- ✔ Collected **3,000+ responses** to a branding survey to inform services and programs.
- ✔ Conducted **8 focus groups** with residents around the County.
- ✔ Added **5,262** social media followers (**82,612 across all platforms**), generated **6.0M impressions**, earned **2,915 media mentions**, and grew newsletter subscribers by more than **10,200**.

How Residents Hear About Department Offerings

- Through the Quarterly Your Guide (50.09%)
- Email/newsletters (49.35%)
- The Department website (43.55%)



Conservation, Stewardship & Trails

- ✔ Coordinated with MDOT SHA on the **\$12.85M MD-210 Bicycle Connectivity** Phase I project (M-NCPPC \$500K) and advanced 20+ miles of trail paving/bridge repairs.
- ✔ Inspected **40+ miles of cycling trails**; completed striping, bridge replacements, and boardwalk renovations.
- ✔ Acquired **9 acres** at North Huntington Local Park, nearly doubling the footprint and protecting natural resources.
- ✔ Confirmed Swan Point Creek (Patuxent River Park) dates to 19–20M years based on an extinct scallop species.
- ✔ Partnered with CCAN at Rollins Ave Park to free **78 trees** from invasive ivy, remove trash, and remove five large bush honeysuckles.
- ✔ Completed repairs to bridges that serve as key connectors in our community.



“My FUN is walking through Watkins Park, especially with my dog. They have great trails and amazing views. I want to thank the Department of Parks and Recreation, Prince George’s County for offering events and programs that’s for everyone!”

- Meka N.

Accomplishments/Successes

Program & Services

- ✔ Offered a total of **11,524** programs in FY25.
- ✔ Top 5 programs offered:
 - (1) Aquatics
 - (2) Fitness
 - (3) Sports
 - (4) Day Camps
 - (5) Performing Arts
- ✔ Served a total of **120,376** of participants in course enrollments.
- ✔ Top 5 Participant Groups:
 - (1) Children (ages 6-12)
 - (2) Mixed Ages
 - (3) Adults (ages 18-59)
 - (4) Seniors (60+)
 - (5) Preschoolers (0-5)



Accomplishments/Successes

Parks & Recreation
is an *Essential Service!*

Youth

- ✔ **Primary driver of engagement, over half of active course participants are ages 5–19.**
- ✔ Youth account for the **majority of course enrollments and pass usage**, largely due to the volume of youth-focused programming offered by the Department.
- ✔ **The highest facility engagement comes from youth ages:**
 - ✔ **15–19 years**
 - ✔ **10–14 years**
- ✔ **19.42%** of survey respondents reported participation in **youth programming**, reflecting strong program utilization despite youth not being the primary survey respondents.
- ✔ Youth engagement significantly contributes to overall household participation, supporting the finding that **69% of County households** engage with the Department in some capacity.



“As a mom. It's been a great opportunity, just being able to have my daughter and her dad, you know, form an even closer bond together through this opportunity, the cotillion has brought them closer together. So Thursdays have kind of been their day dedicated to them. It's been great, definitely a great experience.”

“As a dancing Dad, it's been a great experience. We've built, like this fraternity of dads, in which, you know, we've spent a lot of time with each other, practicing the dance. All the guys are supportive.”

**-Jason Phylicia and Jason Curtis,
2025 Teen Cotillion**

Seniors

- ✔ Approximately **two-thirds** of survey respondents were age **55 or older**.
- ✔ The **largest age group** was ages **65–74**, representing **31%** of all respondents.
- ✔ **36.27%** of respondents reported participating in **senior programs**.
- ✔ **Seniors outperform all other age groups** in facility engagement.
- ✔ Up to **42%** of residents ages **75–79** swiped a pass at a Department facility during the study period.
- ✔ Seniors exceed even youth populations in engagement **as a percentage of total population**, indicating especially strong connection to Department facilities and services.





Snowstorm Fern Response

- ✔ Activated quickly with County partners (Park Police, Homeland Security, MD National Guard).
- ✔ Coordinated resource deployment: road clearing, warming shelters, continuity of essential functions.
- ✔ Deployed **27 staff per shift** clearing roads, parks, sidewalks, and facilities in extreme ice.
- ✔ Used heavy equipment to break hardened ice; **cleared 95%** of sidewalks by Feb. 6.
- ✔ Opened **3 warming centers** (including one 24/7) with overnight Park Police support.
- ✔ Cared for **160+ animals**; monitored historic sites/facilities to prevent major damage.
- ✔ Managed impacts: collapsed tennis bubbles (Cosca, Watkins, Fairland) and canopy/water damage.



Gold Standard Customer Care

Parks & Recreation
is an *Essential Service!*

“As promised, I am writing to express my appreciation for the Project Charges Kickoff meeting you sponsored yesterday to provide clarification, enlightenment, resources and opportunities for partnerships. My exposure to Project Charges began in 2003 when I volunteered in my husband’s office when he served as the Council Member representing the 6th Councilmanic District. My view was from the budgetary approval perspective. My exposure to the Project Charges from the recipient standpoint covered 2012 -2014, and 2016 to present, the latter time frame as the reimbursement submitter/Treasurer for the Lake Arbor Foundation, Inc. (The LAFI).

Today’s meeting was an example of the relationship, in my view, which should exist between a government entity and the citizens it serves. I didn’t mention this in the public statement I made but even in the exchange regarding the meeting’s announcement and clarification regarding in-person vs virtual, both you and Ms. [Joyner] were warm, welcoming, responsive and confirmed my decision that I wanted to be in an in-person meeting so I could interact directly with the individuals involved with, in this instance, Project Charges. From your opening remarks describing your preparation and readiness to perform this role as servant-leader, sharing and introducing Mr. Enoch and his clarifying walk-through of the process/timeframes, having the Legal, Budget and Finance Teams available for immediate response to questions, and acknowledgment and transparency regarding the need to be in a better place process-wise with accountability, all were refreshing and comforting. As a retired Federal HR Manager, the designation of Ms. McCullough and Ms. Potts as hands-on, point persons to support the awardees, as well as Ms. [Joyner], signaled that you are committed to the improvement you recognize is needed to better serve your constituents.

Therefore, I am pleased to reduce to writing my positive and unsolicited evaluation of the Project Charges Kickoff meeting which exceeded my expectations. Unknown to you, I have a basis of comparison as I attended a similar meeting in 2023; my commentary for that meeting was, at best, unfavorable. I look forward to working with you and your staff as you move forward on the model of service you discussed and the sincerity and openness of your expressed message.”

In service and thanks,
Donna J. Dean, Treasurer, Lake Arbor Foundation, Inc.



FY27 FOCUS

Parks & Recreation
is an *Essential Service!*

1. Inclusivity/Equity

2. Amplification of Parks and Recreation

3. Community Impact

4. Community Events

6. Customer Experience

7. Wellness and Mental Health

8. Climate Action

9. Enterprise



A Look Ahead

- Expand patron access to services, guided by insights from the Branding Study.
- Enhance ADA and code compliance across all websites and facilities to ensure equitable access for every community member.
- Launch the **Human Care Master Plan** to meet changing community needs and support overall well-being in all parks and recreation programs, based on NRPA's Seven Dimensions of Wellness.
- Update the Department's **Formula 2040 Master Plan** to guide future growth and strategic investment.
- Expand pickleball programming throughout the County, with participation projected to grow a billion-dollar industry over the next decade.



Working adults (ages 18–64) represented 56% of survey participants, closely aligning with their share of the overall population (61%). Continued outreach will further strengthen participation from this key demographic to ensure insights reflect the full working-age community.

A Look Ahead

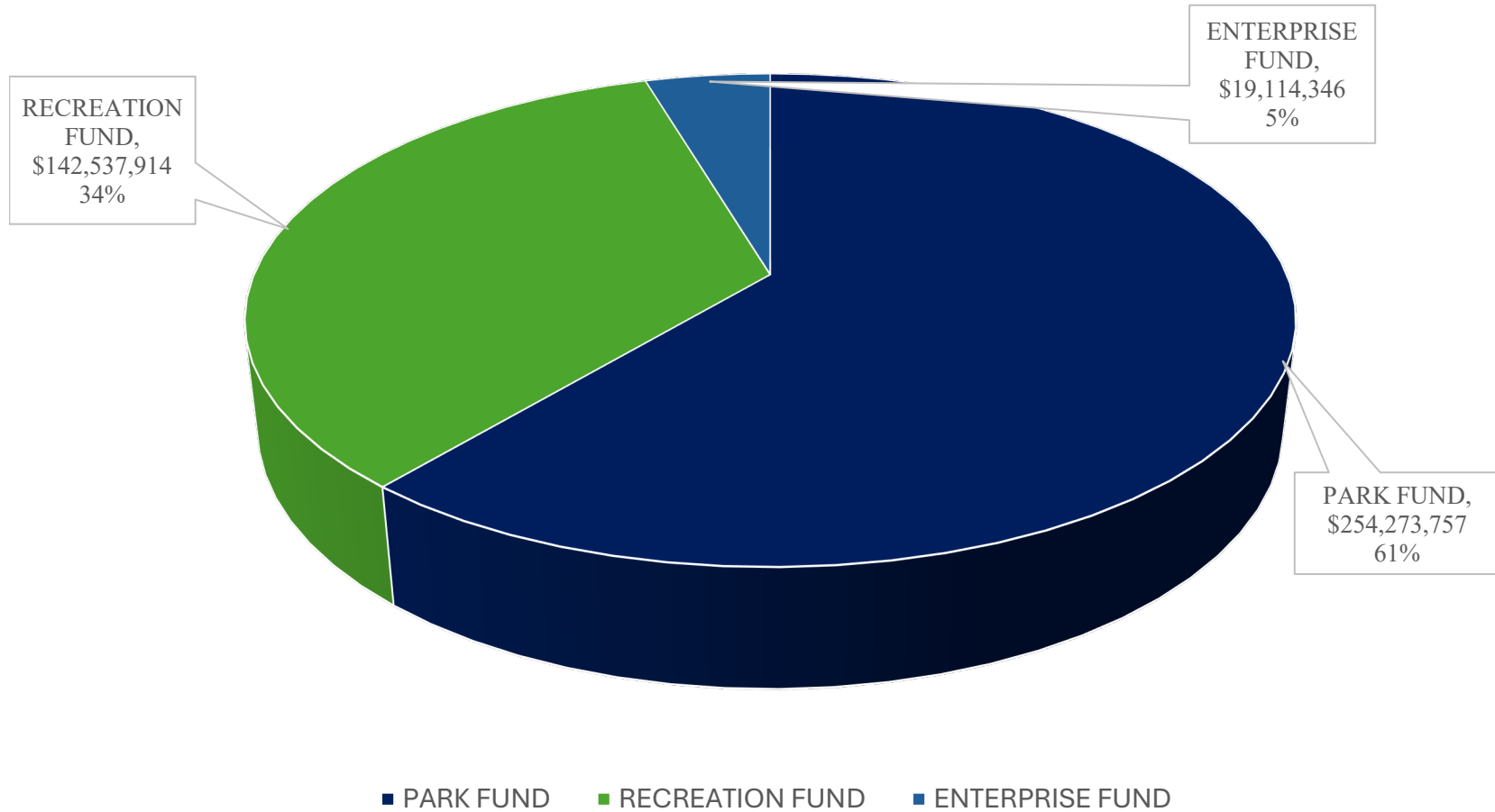
- ✔ Continue sustained engagement with the Walker Mill community to support ongoing initiatives and priorities.
- ✔ Estimate completing 44 CIP projects valued at \$182M including the new multigenerational center.
- ✔ Planning for the 40th Anniversary of the Festival of Lights, highlighting its legacy and community impact.
- ✔ Support and participate in the Commission's Centennial Celebration, recognizing a century of service and stewardship.
- ✔ Progress infrastructure reassessments and capital construction projects, including the Good Luck Community Center and the Sports & Learning Complex Competition Pool.
- ✔ Host Community Conversations with the Director to strengthen transparency, dialogue, and resident engagement.
- ✔ Expanded leadership and enrichment opportunities for County youth during out-of-school time.

Women accounted for more than 80% of survey participants, demonstrating strong engagement and leadership voice. Moving forward, the Department will focus on expanding outreach to better engage men—who comprise nearly **48% of County residents**—to ensure broader, more representative participation.



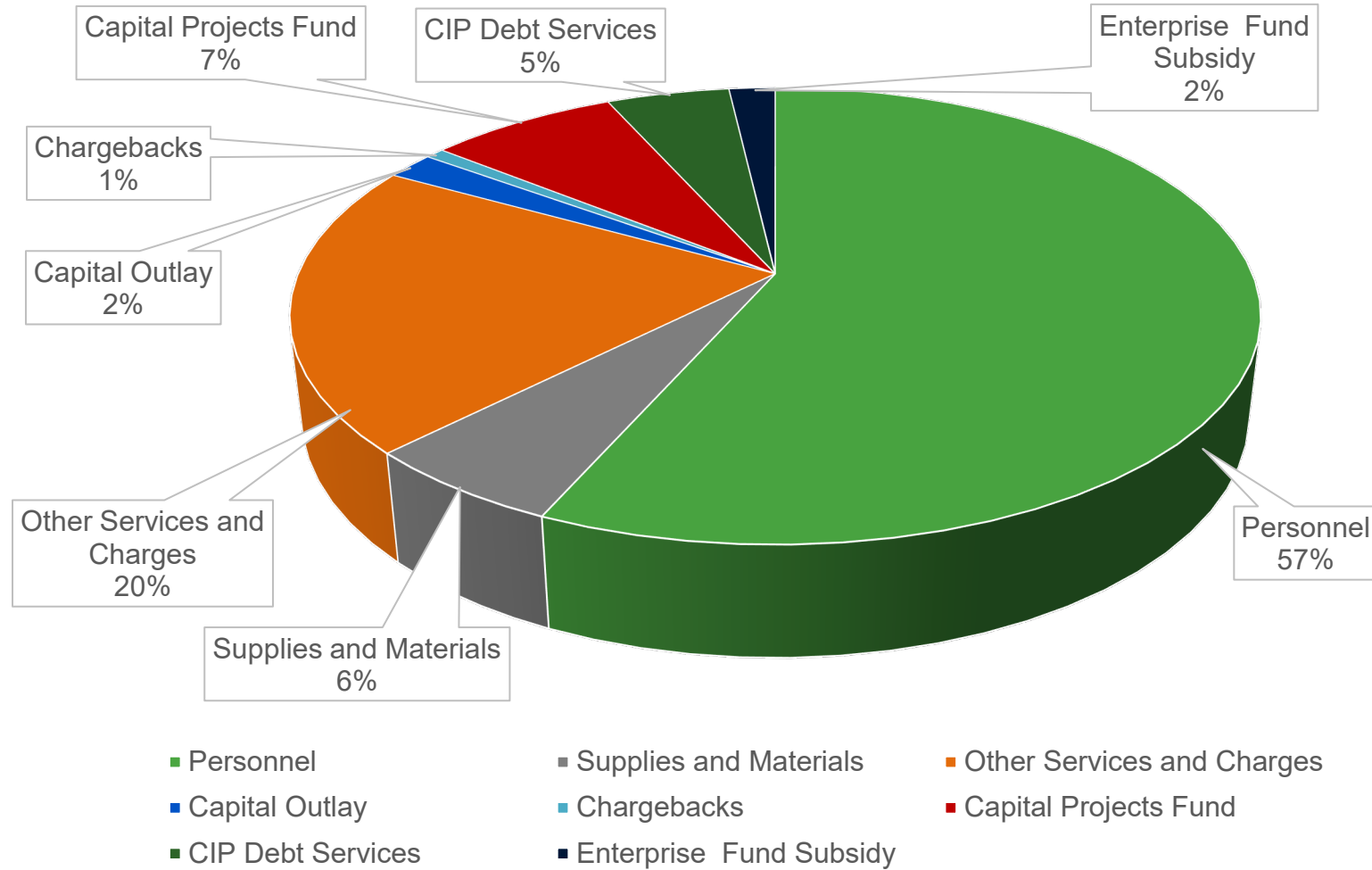
SUMMARY OF PROPOSED FY27 BUDGET BY FUND

Parks & Recreation
is an *Essential Service!*



SUMMARY OF PROPOSED FY27 BUDGET OPERATING BUDGET

Parks & Recreation
is an *Essential Service!*



SUMMARY OF PROPOSED FY27 BUDGET BY MAJOR OBJECT



Major Object / Category	FY26 Adjusted Adopted Budget	FY27 Proposed Budget	Proposed Change (\$)	Proposed Change (%)
Expenditures				
Personnel	\$212,847,899	\$226,140,998	\$13,293,099	6%
Supplies and Materials	\$21,416,953	\$23,254,228	\$1,837,275	9%
Other Services and Charges	\$95,079,519	\$82,325,206	(\$12,754,313)	-13%
Capital Outlay	\$7,062,413	\$7,654,313	\$591,900	8%
Chargebacks	\$2,687,587	\$2,969,183	\$281,596	10%
Subtotal Expenditures	\$339,094,371	\$342,343,928	\$3,249,557	1%
Other Financing Uses (Transfers Out)				
Capital Projects Fund	\$59,970,000	\$30,000,000	(\$29,970,000)	-50%
CIP Debt Services	\$15,292,154	\$19,500,588	\$4,208,434	28%
Enterprise Fund (Subsidy)	\$7,848,121	\$7,542,901	(\$305,220)	-4%
Subtotal Other Financing Uses	\$83,110,275	\$57,043,489	(\$26,066,786)	-31%
Total Expenditures and Other Uses	\$422,204,646	\$399,387,417	(\$22,817,229)	-5%
<i>Required Reserve</i>	<i>\$16,549,152</i>	<i>\$16,538,600</i>	(\$10,552)	<i>0%</i>
Total Expenditures, other uses and required reserve	\$438,753,798	\$415,926,017	(\$22,827,781)	-5%

FY 27 PROPOSED POSITIONS BY DIVISION

Parks & Recreation
is an *Essential Service!*

Office of the Director

- Wellness Integrator
- Life Skills Integrator
- Chief of Staff
- Administrative Specialist II (Resource Development)

Park Police

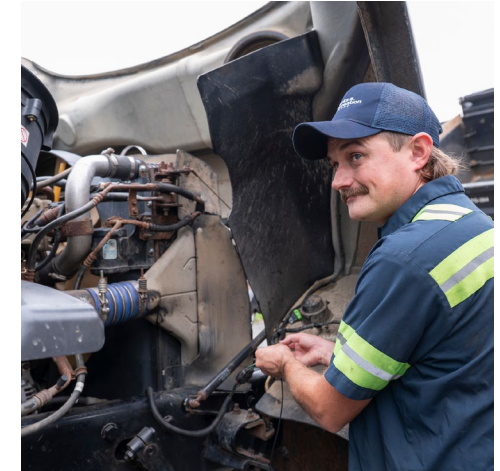
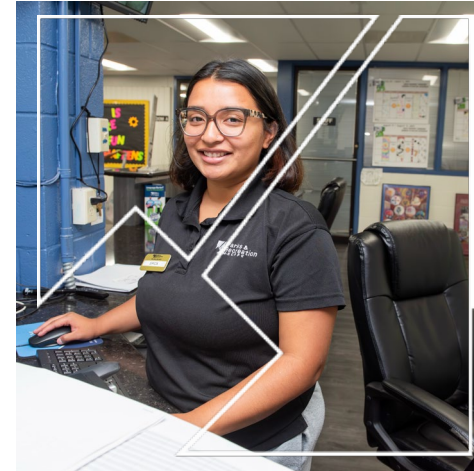
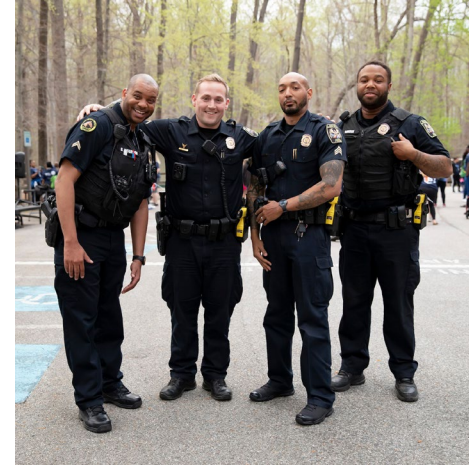
- Administrative Assistant III
- 3 Public Safety Aide
- 2 Security Technician

Northern and Southern Region Parks

- 2 Automotive/Equipment Mechanic

Arts and Cultural Heritage

- Principal Park/Fac. Maint. Worker/CDL



Thank You



Parks & Recreation
M-N C P P C
live more, play more