






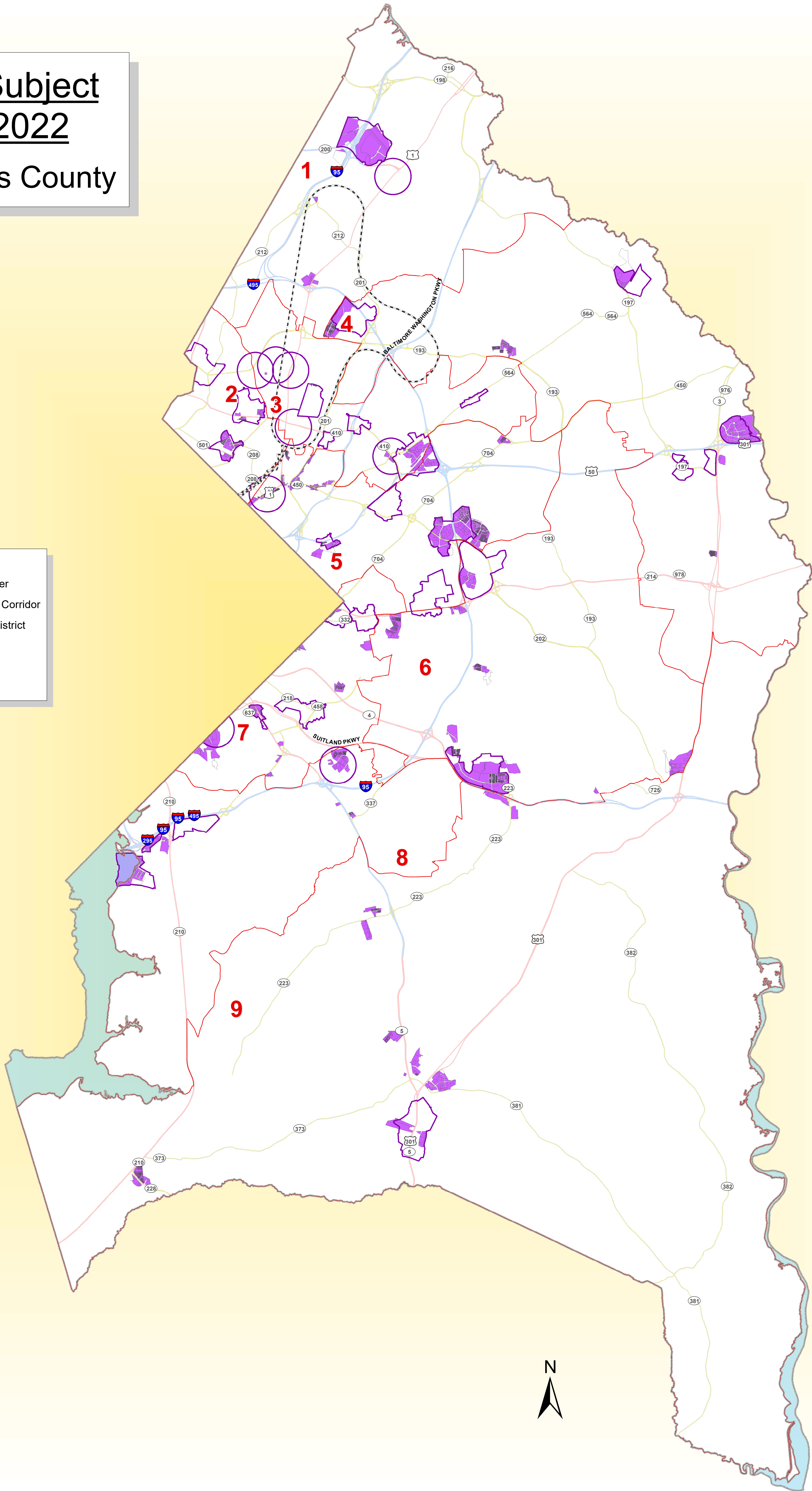
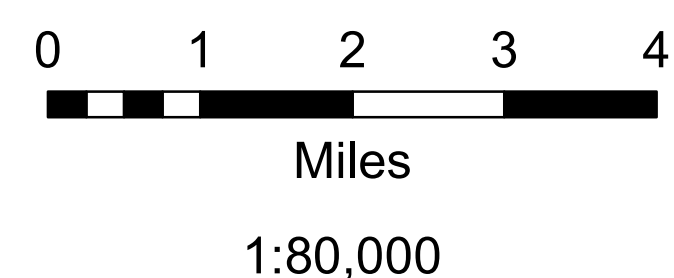


**Properties Subject
to CB-69-2022
Prince George's County**

-  M-X-T Property
-  Plan 2035 Center
-  US1/Innovation Corridor
-  Councilmanic District
-  Freeway
-  Highway
-  Major Road



The Maryland - National Capital
Park and Planning Commission
Prince George's County Planning Department
Geographic Information System



Date Created/Delivered: 7/19/22
Author: Keith Wright
GIS Map & Data Request #: 15770
Archive: J:\GIS_Projects\Keith Wright\Requesticles\15770_*.zip

This map may not be reproduced, stored in a retrieval system, or transmitted by any form, including electronic or by photo reproduction, without the express written permission of The Maryland-National Capital Park and Planning Commission. For more information, contact the Prince George's County Planning Department in Upper Marlboro, Maryland.