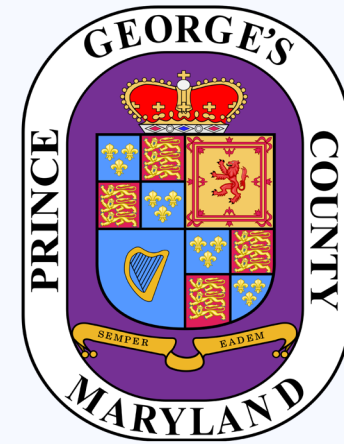


ERAP COUNCIL BRIEFING

JANUARY 19, 2023



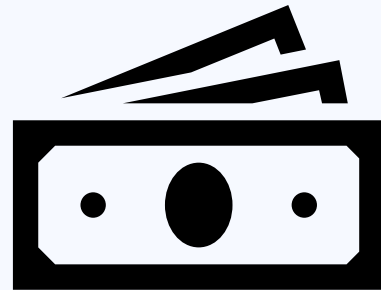
Angela D. Alsobrooks
County Executive



ASSISTANCE ELIGIBILITY & REQUIREMENTS



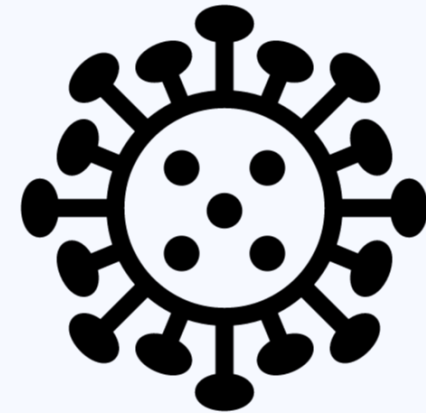
RENTER



**UP TO 80%
AREA
MEDIA
INCOME
(AMI)**



**HOUSING
INSTABILITY
(PAST DUE
RENT OR
UTILITIES)**



**HARDSHIP
DUE TO OR
DURING
COVID-19**

PRIORITIZATION CRITERIA AND METHODOLOGY

Landlord application, Census Tracts of greatest vulnerability

Housing Stress

- Rent burden: 50% of income, Overcrowded: 1.5 people per room

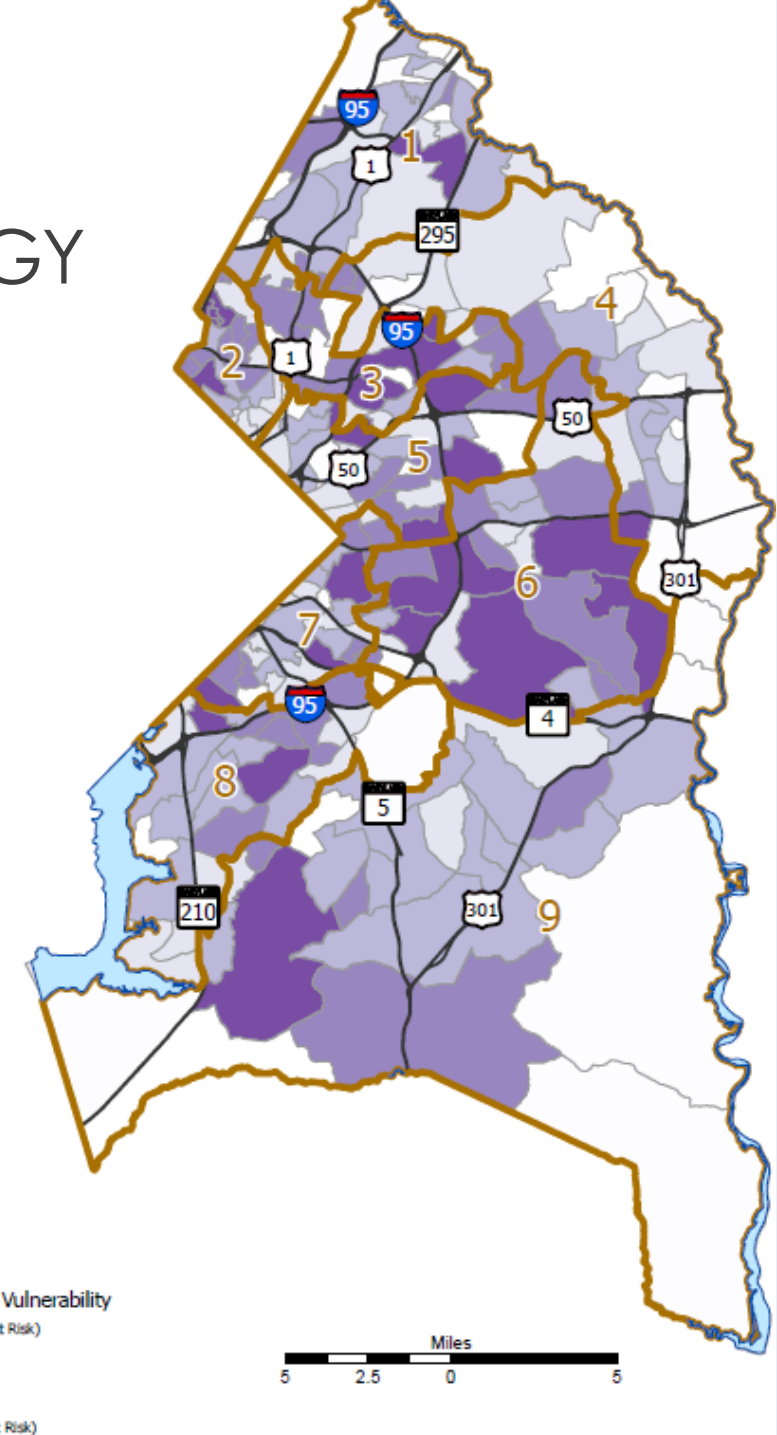
Social Factors

- African-American and Latino population, population below poverty, number of single parent households (HH)

Pandemic Effect

- Confirmed COVID-19 cases, employment in fields with layoff risk

Tenant applications prioritized based on those facing Court proceedings



Landlord Applications:

859 funded

64 currently in process

Tenant Applications:

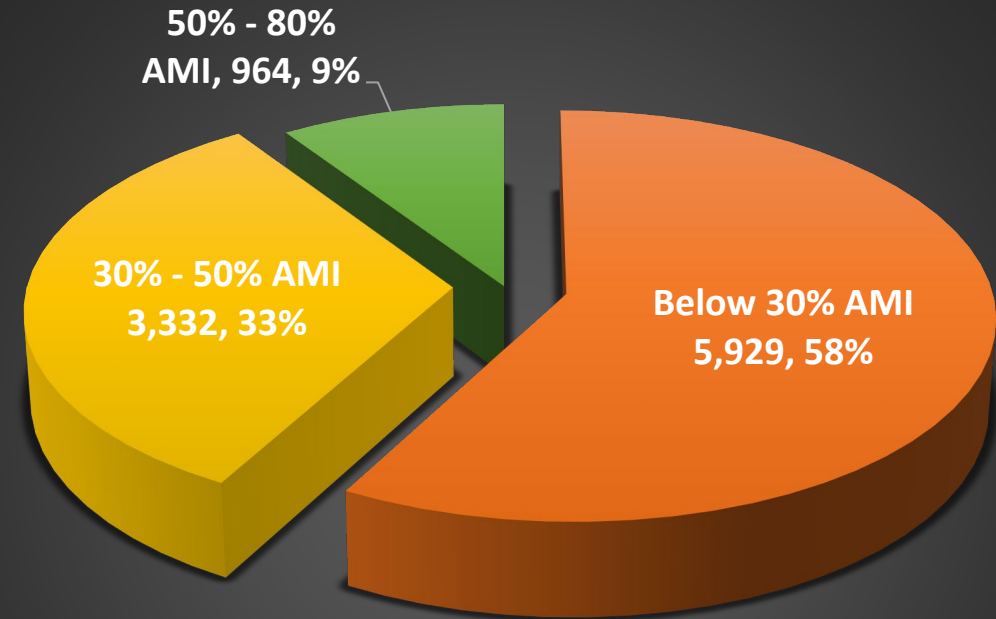
4,127 funded

297 currently in process

4 newly submitted

Portal Closed on Dec 15, 2021

Households Assisted: **10,225**



Total Funds deployed: **\$102.3M**

As of 1/13/2023

■ Below 30% AMI ■ 30% - 50% AMI ■ 50% - 80% AMI

HOUSEHOLDS ASSISTED

64% female headed

72% Black or African American

19% Other multiracial

50% Latino

ERAP RESOURCES

\$120.1M for direct assistance, *of which*

\$26.4M as additional allocations and re-allocations

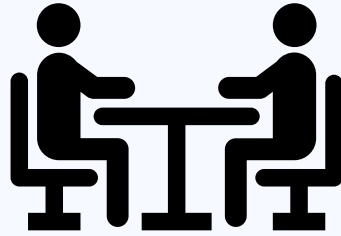
ERA 1 Close out December 31st of 2022

Currently estimate approximately **\$10M** of assistance for HHs not currently in the que

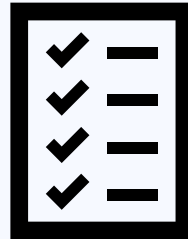
ERAP FRAMEWORK & PARTNERSHIPS



**APPLICATION
PORTAL**



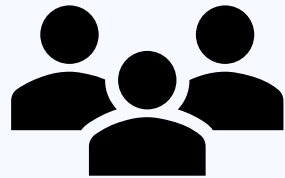
**INTAKE
SPECIALISTS**



REVIEWERS



HOTLINE



PARTNERS



**OUTREACH &
COMMUNICATIONS**



APPLICATION PROCESS OVERVIEW



*Pay tenant if landlord unresponsive or declines to participate

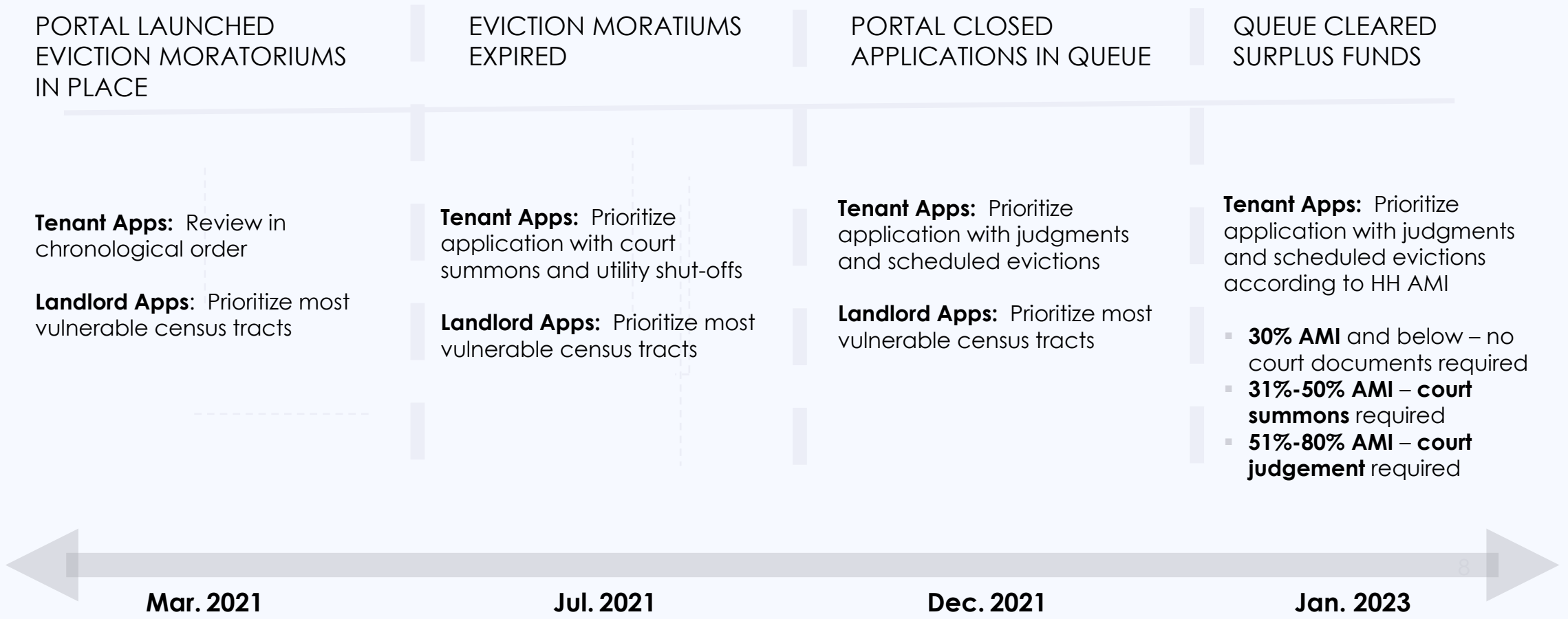
Community Partners (8) intake available for tenants;

Expedite applications that have court notices, utility shutoffs

Coordination with Court notices and eviction writs

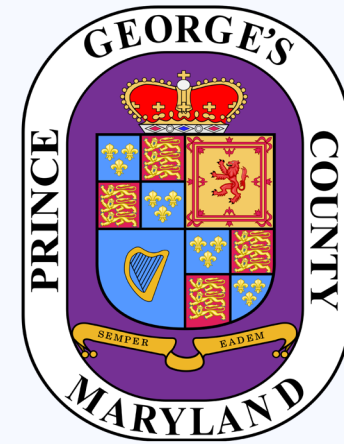


EVOLUTION OF POLICY



Q&A

JANUARY 19, 2023



Angela D. Alsobrooks
County Executive

