



**Prince George's County
Department of Social Services**

**FY 2022
Annual Report**

“Never doubt that a small group of thoughtful committed citizens can change the world; indeed, it's the only thing that ever has.”

~ Margaret Mead

*“Our jobs are not to judge.
Our jobs are not to figure out if someone deserves something.
Our jobs are to lift the fallen, to restore the broken and
to heal the hurting.”*

~Joel Osteen

**PRINCE GEORGE'S COUNTY
DEPARTMENT OF SOCIAL SERVICES**

MESSAGE FROM THE DIRECTOR

It is with great pride and humility that I serve as the Director of the Prince George's County Department of Social Services. I alongside the more than 600 employees of the Department, consider it a privilege to provide the citizens of this County services that strengthen families, protect children and vulnerable adults, encourage self-sufficiency and promote personal responsibility.



Our Department is pleased to present its Annual Report that provides an overview of the Department's performance during the fiscal year. The work performed by this department is critical to the collective success of our County and its residents. This document contains the many accomplishments by the employees and staff of the Department.

The services we provide such as the Food Supplement Program (formerly known as food stamps), Temporary Cash Assistance, Medical Assistance, energy assistance, homeless services, shelter services, food pantries, and many others encourage self-sufficiency. Through our Child, Adult and Family Services programs our department staff works to ensure that both vulnerable children and adults reside in an environment that is safe, stable and in which they can thrive. Whenever possible we try to keep the family unit and relationships intact. Sometimes the home environment may be determined to be unsafe for a child. In those instances, our foster care staff works hard to ensure temporary placement for the child. If the family or home environment is considered best suited for Family Preservation Services our staff may temporarily remove children from the home to provide the individual and family supports needed to return the children back to the home to maintain those familial bonds. In those unfortunate instances when it is determined that a child is unable to return to the home, our Adoption Services staff work hard to find a loving adoptive home in which the child can thrive. Many times these homes are with relatives.

Every day is filled with new opportunities to roll up our sleeves and deliver quality interactions to our customers. We deal with a multitude of populations from various backgrounds, and it requires a humanistic approach. From our youth-in-care to those in need of food and energy resources, even human trafficking victims and survivors, fall within our purview- and we have the opportunity to help them rebuild and become stable members of our community.

I extend my sincerest thanks to the Secretary of the Maryland Department of Human Services, Prince George's County Executive and Social Services Board whose leadership continues to support and encourage the work of our department leadership, employees and staff dedicated to delivering quality services and programs to our vulnerable citizens.

Gloria Brown Burnett
Director

OUR MISSION

The Prince George's County Department of Social Services (DSS) is in the business of providing opportunities for residents of the County to become independent, responsible and stable members of the community. We do this by providing intervention services that strengthen families, protect children and vulnerable adults, encourage self-sufficiency and promote personal responsibility.

OUR VISION

The Prince George's County Department of Social Services will be a leader in social services, working to significantly improve the lives of residents of this County. We will achieve this by building community capacity, identifying gaps in service, developing community-based solutions, and building a collaborative and competitive network of providers that includes DSS. We will hold our partners and ourselves accountable.

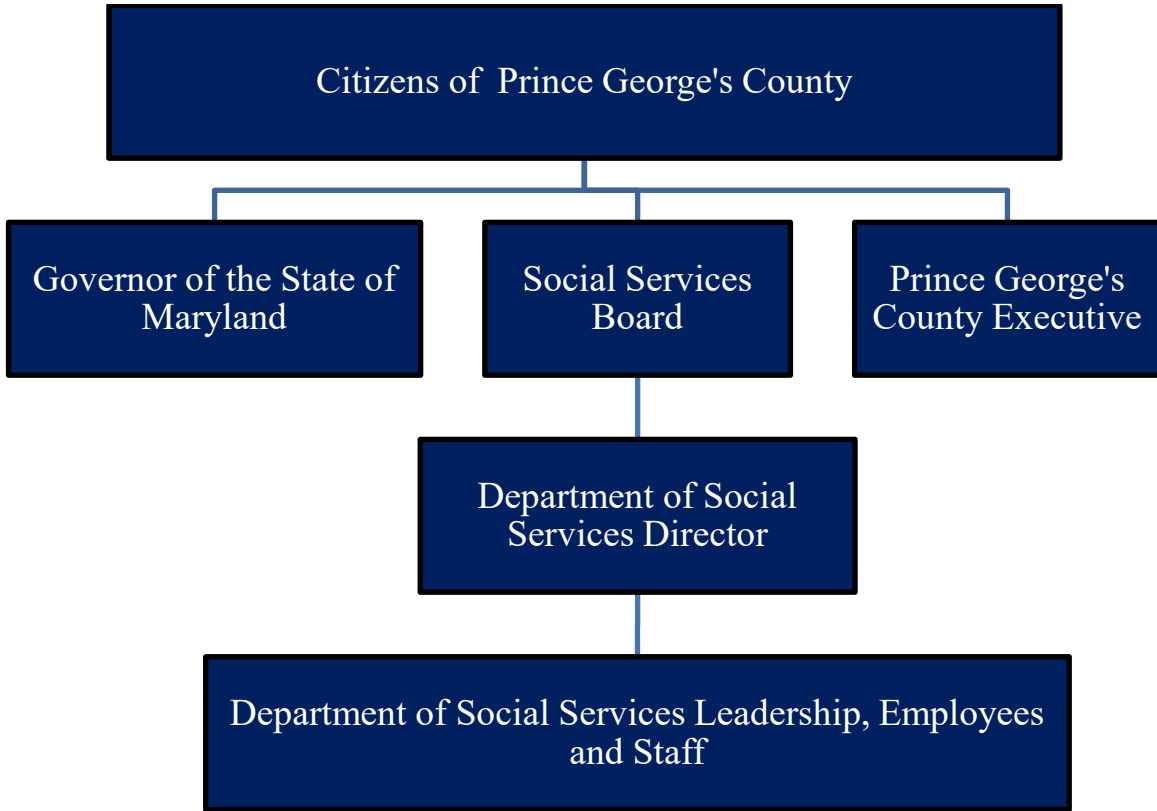
GUIDING PRINCIPLES

- All People are to be treated with Dignity, Compassion and Respect.
- All People are to be Safe from Abuse and Neglect.
- All People are to receive Consistent, Timely and Appropriate Service.
- All Children are entitled to Emotional and Financial Support from All Parents.
- The Agency will help Customers Develop and Achieve their Goals.
- The Agency will Inform All Customers of their Rights and Responsibilities.
- The Agency will Promote Strong and Supportive Partnerships among communities, families and service providers.
- All Agency Facilities will be Clean and Safe.
- The Agency will Encourage and Support Diversity, Creativity and Responsible risk-taking.
- The Agency will Advocate for Social, Economic and Political opportunities for all Customers and Employees.
- The Agency's Most Valuable Asset is its Employees.
- All Employees will be Dedicated, Well-informed, Well-equipped and take pride in their work.
- All Employees will Act and Speak as One Department.

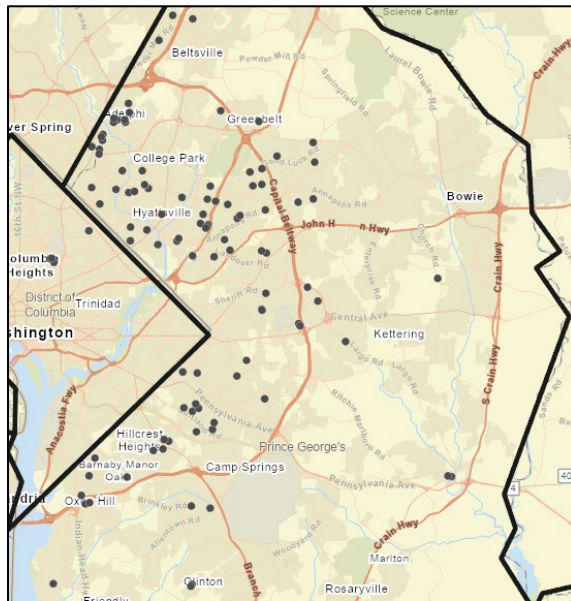
A DUAL REPORTING AGENCY

The Prince George's County Department of Social Services is a dual reporting Agency. The Department administers State of Maryland programs locally for the residents of Prince George's County. The department is governed by federal, state and local laws and the Code of Maryland Regulations (COMAR). At the State level, the Department falls under the Maryland Department of Human Services which is led by the Secretary of the Department. In Prince George's County, the Department falls under the Deputy Chief Administrative Officer for Health and Human Services in the Office of the County Executive.

ORGANIZATION CHART



WE ARE EVERY WHERE YOU ARE



Strategic Planning Cycle



PRINCE GEORGE'S COUNTY DEPARTMENT OF SOCIAL SERVICES STRATEGIC PLAN

Agency Priorities

- Simplify service access with timely, accurate and quality interactions to all community stakeholders.
- Lead the shift in the public's focus to intervention and prevention services for youth at risk of experiencing homelessness or entering the child welfare system.
- Improve and expand access to home and community based services for older adults.

Agency Objectives

- Partner with other county agencies and organizations to build county residents' awareness and education about social services related issues specific to improving outcomes residents.
- Lead the shift in the public's focus to intervention and prevention services to youth at risk of experiencing homelessness or entering the child welfare system.
- Advocate and partner to improve and expand access to home and community based services for older adults.

**STRATEGIC GOAL 1:
ORGANIZATIONAL CULTURE**

- To create a departmental culture that demonstrates shared beliefs and norms that aligns with our identified values of investing in people and creating an environment of support, inclusivity, and engagement.

**STRATEGIC GOAL 2: TO
ENSURE THE SAFETY AND
WELL-BEING OF CHILDREN AND
VULNERABLE ADULTS**

- To provide intervention services to abused, neglected or impoverished children, adults and families in order to ensure safety in their living environment.

**STRATEGIC GOAL 3: PROVIDE
STABILIZATION SERVICES TO
FAMILIES AND INDIVIDUALS**

- Stabilize families and individuals in need through increased access to services.

**STRATEGIC GOAL 4: ASSIST
CHILDREN AND VULNERABLE
ADULTS TO ACHIEVE AND
MAINTAIN PERMANENCE IN
THE COMMUNITY**

- To assist individuals, adults and families in need to achieve and maintain permanence in the community through increased access to services.

**STRATEGIC GOAL 5: PROVIDE
SUPPORTIVE AND
OPERATIONAL FUNCTIONS FOR
DEPARTMENT PROGRAMS AND
SERVICES**

- To assist organizational operations through effective administrative services while improving responsiveness to internal and external customers.

**GOAL 6: COMMUNICATIONS
AND PUBLIC EDUCATION**

- Create key messages and communications tools for the Department of Social Services to establish one positive voice throughout all communication channels. Through Communications and Public Education, the Department will establish a clear brand identity. Communications and Public Education will also work under real and measurable tools to determine the effectiveness of the Department's Communications efforts.

**STRATEGIC GOAL 7: QUALITY,
COMPLIANCE AND
EVALUATION**

- Provide quality services to our customers with the highest level of integrity.

PRINCE GEORGE'S COUNTY DEPARTMENT OF SOCIAL SERVICES

A MESSAGE FROM THE SOCIAL SERVICES ADVISORY BOARD

The Social Services Board is proud to provide oversight and partner with the Prince George's County Department of Social Services. The work of the Department is critical to provide stability and self-sufficiency to the County's most vulnerable citizens. The Department has a long history of providing quality programs and services designed to strengthen families, protect children and vulnerable adults.



As the outgoing Chair of the Board, it has been a pleasure to serve. I am extremely happy with how our Department and our Director has met and exceeded many of the goals that were established during the troubling times of the COVID-19 virus. As one who believes that the mission of our agency is "Providing quality service at every interaction for all of Prince George's County", I know that our residents are in great hands.

I would like to thank all the board members who served with me and I know that their service was exceptional, and excellent, and I wish each of them well. My experience has been that of a well-functioning Board, being supportive and collective, and not afraid of challenge. I extend my gratitude for making my job as Chair easier. Also, I wish County Executive Alsobrooks and her staff, who reappointed me for a second term, the best during her time in office.

As many of you know it is not easy to wave your wand and things get better. It takes a great deal of work. Having been elected to serve on the Maryland Association of Social Services Boards (MASSB) as a Trustee, I have gained knowledge of how Social Services departments around the State interface and share program knowledge, financial capabilities, training, and oversight. The importance of what we do gives us widespread relevance. As an organization, we need to look to the future but continue to be guided by our past. Again, thanks for allowing me to serve.

Sam Williams
Chair

Board Members:	Samuel Williams Chair	Cynthia Terry Vice Chair	Audrey Chase Secretary	Calvin S. Hawkins At- Large Council Member
	Delores Furman Member	Dorothy Duppins Member	Kenneth White Member	Shirley Newton-Guest Member



SOCIAL SERVICES ADVISORY BOARD

The Prince George's County Social Services Board advises the department director as to the local application of State policies or procedures. Board Members are appointed by the Prince George's County Council with recommendation from the County Executive.

It is the duty of the Social Services Board to review the periodic evaluation of the local department prepared by the Department and consult with the local director as to the proper implementation of the recommendations made by the local board as a result of its evaluation of the local department. The Board also reviews and transmits to the Secretary of the Department of Human Services and the County Executive the Department's annual report of the local director on the activities of the local department; and any changes in policies or procedures the local board recommends. The Board also reviews and makes recommendations regarding the annual estimate of funds needed for social services and public assistance purposes in the county.

In addition, the Board approves or disapproves the director's evaluation of the readiness of the department to take on the new service and the propriety of the new service within the State plan; and consults with the director regarding any new service that might be instituted by the local director or the local board to meet an unmet need in the county. The Board also serves as the department's advocate for social services and public assistance programs on the local, State, and federal levels. It works to identify private, State, and federal grant sources for social services and public assistance programs. In conjunction with the Department, the Board develops and implements an educational and public relations program for public and elected officials on the local, State, and federal level.



ADULT PUBLIC GUARDIANSHIP REVIEW BOARD

ADULT PUBLIC GUARDIANSHIP REVIEW BOARD

The Adult Public Guardianship program exists to safeguard the welfare of persons with disabilities. Public guardianship is a legal procedure in which the court determines if a person's ability to make health and safety decisions for themselves is significantly impaired by disease, accident or disability. If so, the court will appoint a guardian to act as a substitute decision-maker. Public guardianship in Maryland is administered by local Departments of Social Services for those aged 18-64, and the Department of Aging for those aged 65+. Public guardianship is a situation of last resort, when there are no family members, friends and loved ones to serve in this capacity.

Adult Public Guardianship Review Boards are interdisciplinary teams that act as consultants to the public guardians. Adult Public Guardianship Review Boards review public guardianship cases every six months. They make recommendations to the court to continue, modify, or terminate guardianship of the person. There is no mechanism for state agency oversight of private guardianship cases. Board Members are recommended by the County Executive and appointed by the Prince George's County Council. The Adult Public Guardianship Review Boards consist of:

- A professional representative of the local department of social services;
- Two physicians (one of whom should be a psychiatrist from the local health department);
- A representative from the area agency on aging or the State Department on Aging;
- A professional representative of a local non-profit social service organization;
- An attorney;
- Two citizen representatives from the local community; and
- A public health nurse.

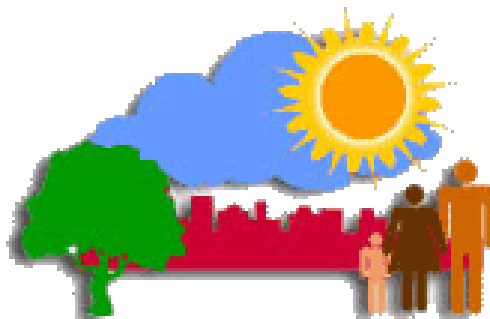


CITIZEN REVIEW BOARD FOR CHILDREN

CITIZEN REVIEW BOARD FOR CHILDREN

The Citizen Review Board for Children (CRBC) was created as a volunteer review panel for child protection. The board focuses on reviewing policies, procedures, and cases pertaining to reports of child abuse and neglect in which a finding of indicated was made. Through their reviews the Panel can identify gaps in services, the need for changes in policy, and they serve as advocates for the children and families of Prince George's County. The board supports all efforts to provide permanence for children in foster care.

Board Members are recommended by the County Executive and appointed by the Prince George's County Council. Members of the board meet monthly to conduct in-depth reviews of selected cases. Subgroups of the Panel can be organized to focus on a specific issue.



Department Divisions



*“What counts in life is not the mere fact that we have lived.
It is what difference we have made to the lives of others that will determine
the significance of the life we lead.”*

~ Nelson Mandela



ADMINISTRATIVE SERVICES

The **Administrative Division** is responsible for ensuring the overall operations for the department including Central Services, Contracts and Procurement, Finance, Information Management Systems, and Human Resources division. The Division strives to provide the highest level of customer service to its internal and external customers.

The **Office of Central Services** is responsible for managing the general office supply inventories other equipment on behalf of the agency, including centralized ordering and tracking of supplies, ensuring cost efficient purchasing, and providing oversight over supply requests as they relate to necessity and budget availability.

The **Office Contracts and Procurement** ensures that Prince George's County Department of Social Services follows all federal and state and local laws regarding contracting and procurement in addition to the guidelines established by the State of Maryland Code of Regulations and Prince George's County.

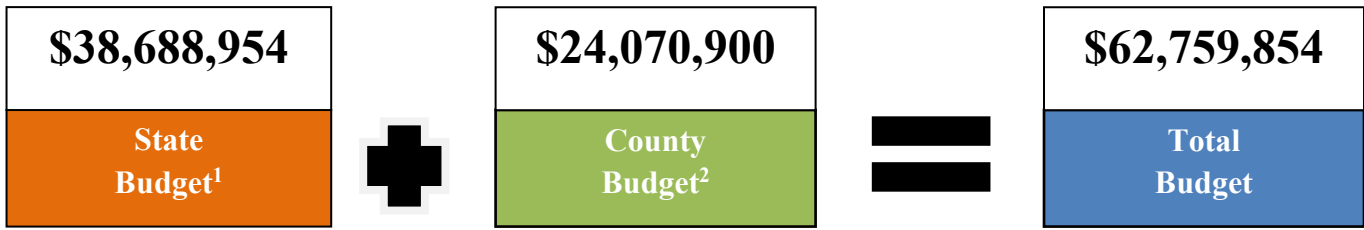
The **Office of Finance** performs all budgeting and accounting functions essential to the daily operation and management of the Department. The general accounting functions of the Office of Finance include processing vendor invoices; cash receipt deposits, and agency payroll, maintenance of all financial records, fund balance reconciliations, and preparation of year-end closing records.

The **Office of Human Resources** works to recruit and select top quality applicants to fill county and State jobs in a timely manner. The Office of Human Resources strives to provide a respectful, diverse, safe and caring work environment. By providing effective resources and training to staff support efforts to provide excellent customer service and pursue continuous quality improvement.

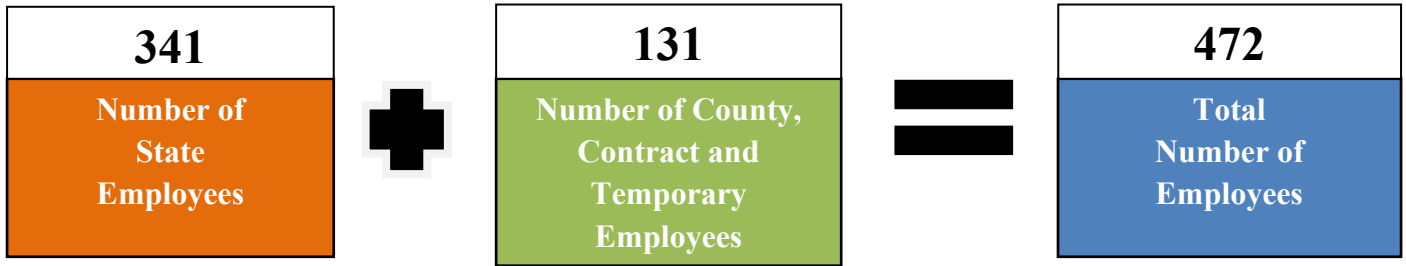
The **Office of Information and Technology (OIT)** manages Information Technology and Telecommunication services within the Department. OIT establishes and manages a long range, target technology architecture and encourages cross agency collaboration and best technology practices for operations and project management.

ADMINISTRATIVE SERVICES DATA HIGHLIGHTS

Operating Budget



Human Resources



Contracting and Procurement



1. State Budget includes Operation and Flex and Special Fund Allocations.
2. The County Budget includes Grants and General Fund



CHILD, ADULT AND FAMILY SERVICES

The Prince George's County Department of Social Services provides an array of programs designed to help families face today's issues. Our services are designed to assist families with developing new ways of communicating, coping with and overcoming barriers to their well-being. The work of the Child, Adult and Family Services Division is focused on the Department's goal to promote communities where children grow up safe from abuse, neglect, and dependency, where adults are protected from violence, and where parents can receive strength in their capacity to keep their family safe. The following program areas are available to assist County residents:

Child Protective Services provides a comprehensive assessment to respond to allegations of abuse/neglect. The Prince George's County Department of Social Services recognizes that it is the responsibility of adults to keep children safe.

Foster Care & Adoptive Services - There are many children in foster care that need strong and supportive families. The Department is always looking for temporary foster and permanent adoptive homes for county youth in need of a loving, stable, and safe environment. Foster Care is setup to give temporary care for children in need of help. Foster parents play a critical role in helping children heal. They show children stability and teach them life lessons that last a lifetime—and affect future generations. Adoption is to legally take on the role of parent for a child who is not your biological child. Adopted children become full members of the adopting household.

Family Preservation is based upon a philosophy that emphasizes respect for the family strengths and family diversity. Regardless of the family's dysfunction, culture, etc., a concerted effort is made to build upon the strengths of the family.

The Adult Resources Bureau provides a myriad of services to vulnerable adults 18 and over within Prince George's County. Within the bureau is Adult Protective Services which is a state mandated program with the purpose to investigate allegations of abuse, neglect, and exploitation of vulnerable adults who are at risk of harm. The program also provides continuing case management services to protect the health, safety, and welfare of vulnerable adults.

Policy, Practice and Ready by 21 provides a number of supportive services geared toward preparing foster youth between the ages of 14 - 21 to be productive citizens in society. The services include employment exploration, education assistance, housing resources, life skills development & after care case management that equip the youth to live independently upon emancipation. In addition, this Bureau is comprised of two key programs that provide resources and support to families throughout their involvement with the Department. The licensing and recruitment team identifies, recruits, retains, and trains current and prospective resource parents to ensure the youth in care have safe, stable, loving homes to reside.

CHILD, ADULT AND FAMILY SERVICES DATA HIGHLIGHTS

7,146

Number of child abuse and neglect allegations referred for a CPS response

32%

Percentage of CPS screening contacts that turn into CPS responses



859

Number of new adult neglect or abuse investigations

100%

Percentage of adult abuse, neglect or exploitation cases opened less than 60 days

81

Number of new Family Preservation cases



93.7%

Percentage Avoiding Foster Care placement Due to receiving Family Preservation Services

467

Total number of children in Foster care placement

180

Number of all exits from foster care





COMMUNITY SERVICES

The **Community Services Division** provides programs that help families who have had an unforeseen emergency. Our programs offer support that assist families to become more stable and self-sufficient. The Department of Social Services wants to assist in the independence and stability of Prince George's County families through the below programs and many more.

Energy Assistance Programs assist low-income households with their heating and electric bills once per year between July and June through the Maryland Energy Assistance Program and Electric Universal Service Program. These programs assist many County residents, including senior citizens and low-wage earners.

The **Homeless Prevention Programs** provide financial assistance to County residents to prevent eviction or mortgage foreclosures. In addition, mediation and counseling services between landlords and tenants may be offered. Referrals to other community agencies are often made to further assist customers with identifying additional funds to meet their needs.

The Department of Social Services is responsible for three **Emergency Shelters** that provide temporary shelter, case management and supportive services for homeless persons throughout the year. An additional emergency shelter is a winter overnight shelter program operated through a partnership with churches and the County Government. Individuals and families can stay at the emergency shelters up to 60 to 90 days.

The **Transitional Housing Program** and the **Permanent Housing Program** offer homeless families and single adults a longer period of time to stabilize and both programs provide comprehensive supportive services. In the Transitional Housing Program, households can stay up to 2 years.

The **Emergency Food Assistance Program** provides food commodities to low-income households through community-based pantries. Food is distributed by a network of pantries operated by churches and community organizations throughout the County. Households can request food once per month.

COMMUNITY SERVICES DIVISION DATA HIGHLIGHTS

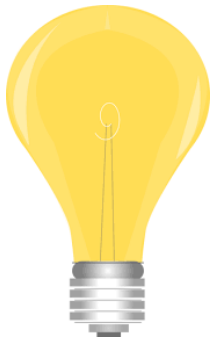


13,526
Energy assistance applications received

\$1,048
Average disbursement



1,189
Received emergency shelter services



9,726
Number of households receiving energy assistance



477
Number of individuals exiting emergency shelters

136,813
pounds of food distributed

2,977
households served

8,800
individuals served



465
Number of households establishing permanent housing



FAMILY INVESTMENT

The **Family Investment Division** helps families and individuals with temporary and ongoing assistance through the Temporary Cash Assistance Program, Supplemental Nutrition Assistance Program, Medical Assistance, Welfare to Work Services, Emergency Assistance to Families with Children, and Mission: Nutrition. The Department of Social Services promotes independence through work and encourages personal responsibility. The needs of families are met on a case-by-case basis with the goal of independence. The following programs help families and individuals achieve independence.

Emergency Assistance to Families with Children (EAFC) provides emergency cash assistance to families who need emergency help to prevent eviction, foreclosure, utility service termination, burial assistance, or other related emergencies.

The **Supplemental Nutrition Assistance Program (SNAP)**, formerly known as Food Stamps, helps low-income households buy the food they need for good health.

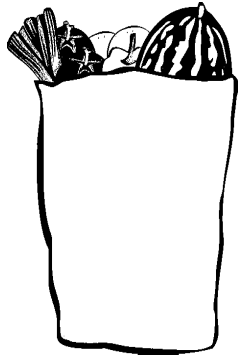
Medicaid, also called Medical Assistance (MA) assists with the payment of medical bills of eligible families and individuals. Many different groups of people may be eligible for Medicaid in Maryland. As part of health reform, Maryland expanded Medicaid to nearly all adults under age 65 with incomes at or below 138% of the Federal Poverty Level or about \$1,436 per month for a household of one person in FY2019. To be eligible for Medicaid, applicants must meet Medicaid eligibility requirements. Medicaid requirements are based on state and federal law.

The **Temporary Disability Assistance Program (TDAP)** is available to help disabled Marylanders through a period of short-term disability while they are awaiting approval of federal disability support. The program is funded through the State of Maryland to provide help to adults without dependent children.

Temporary Cash Assistance (TCA), Maryland's Temporary Assistance to Needy Families (TANF) program, provides cash assistance to families with dependent children when available resources do not fully address the family's needs and while preparing program participants for independence through work.

FAMILY INVESTMENT DIVISION DATA HIGHLIGHTS

Supplemental Nutrition Assistance Program (SNAP)



\$34,358,615.24

Average dollar amount of benefits issued/month



139,668

Number of active recipients/month



10,833

Average number of children receiving Summer SNAP

Temporary Cash Assistance Program (TCA)



5,113

Average number of child recipients

7,717

Average number of recipients per month



\$2,132,182.34

Average dollar amount of benefits issued/month

287,934

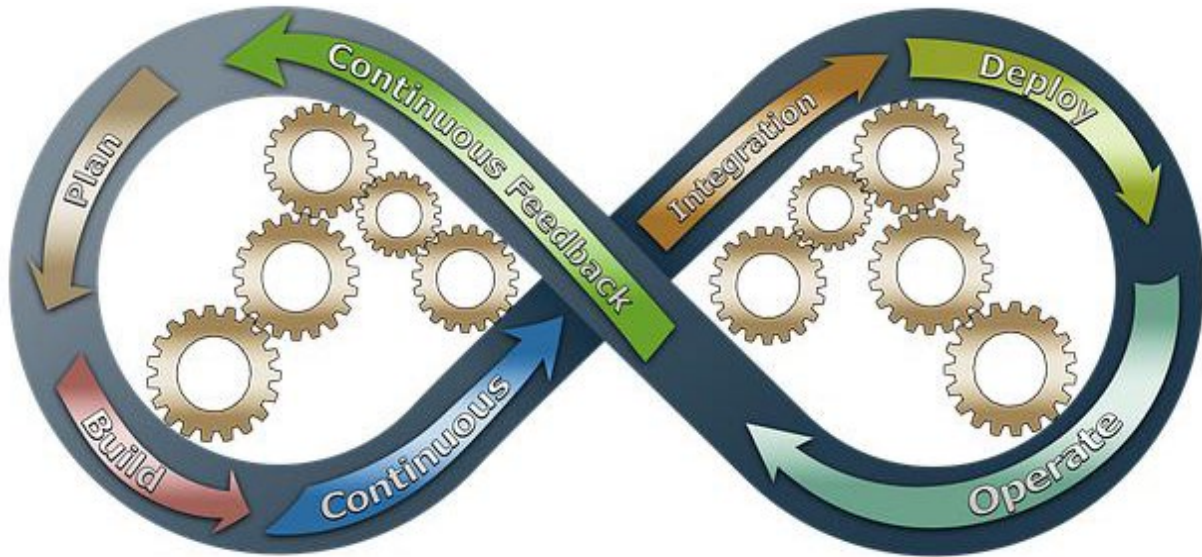
Number of individuals accessing health insurance through Medicaid



8,069

Maryland Health Connection caseload of persons receiving services

INFORM, DETECT, PREVENT AND CORRECT



QUALITY ASSURANCE AND COMPLIANCE

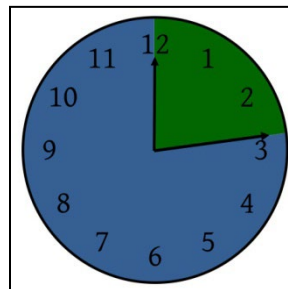
The **Quality Assurance and Compliance Division** is responsible for ensuring the quality of service provision to the Departments through managing appeals processes, quality control, investigations and administrative review, handle constituent concerns, program evaluation, corrective and preventative action planning, monitoring and data analysis and reporting. It is the goal of the Division to make certain that the integrity and quality of service is provided at every interaction. The Quality Assurance and Compliance Division seeks to inform, detect, prevent and correct by timely and accurate reviews, ethical evaluation and objective auditing of program services, program processes and program outcomes.

Child Protective Services Clearances - Schools

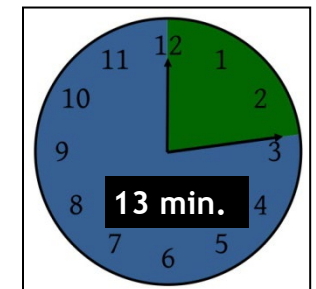
JANUARY					
Tuesday	Wednesday	Thursday	Friday	Saturday	
5	6	7	8	9	
12	13	14	15	16	
19	20	21	22	23	
26	27	28	29	30	

[This Photo](#) by Unknown
Author is licensed under

SAIL Center Wait Time



Priority Services Wait Time



South County Office

Landover Office

QUALITY ASSURANCE AND COMPLIANCE DIVISION DATA HIGHLIGHTS

91%
Child Protective
Service
findings/decision
Appeals Win Rate



98%
SNAP and TCA
benefits
Appeals Win Rate



99.0%
Average percent of
temporary cash
assistance applications
processed within 30
days

96.5%
Average percent of
food supplement
program applications
processed within 30
days



94%
Percent energy
assistance (EA)
applications
processed within 45
days

96.3%
Average percent of
medical assistance
applications processed
within 30 days



Department Highlights

*“It was once said that the moral test of a society is how
that society treats those who are in the dawn of life,
the children; those who are in the twilight of life,
the elderly; and those who are in the shadows of life, the sick,
the needy and the handicapped.”*

~ Hubert H. Humphrey



OFFICE OF STRATEGIC PARTNERSHIPS AND COMMUNITY SOLUTIONS

Since 2013, the Prince George's County Department of Social Services through its partnership has been removing barriers to academic success for Prince George's County Public Schools students grades K-12. Each identified school serves as a hub within its community, which allows a network of stakeholders to engage in shared leadership and partnership to leverage resources and provide vulnerable students and families with access to a variety of supports.

The program's School and Community Engagement Advocate (SCEA) are located within the participating schools to deliver place-based wraparound supports designed to support the improvement of academic performance, and connect students and families to needed resources. SCEAs utilize a set of strategies specific to school communities which help students learn and succeed, while strengthening families and communities. This may include expanded learning and enrichment opportunities, behavioral health services, parent/family engagement, direct material assistance, interventions targeting both school-wide and individuals, adult education, and early childhood programs. The program's expansion goal is to ensure that schools operate as community hubs which provide students and families access to community-based, non-profit, and government resources through coordination of services.

During the 2021-22 school year, the program provided an array of services to over 559 participants. The staff provide case management services which facilitate social and emotional wellness groups for students; developing attendance interventions for students; mental health referrals; and uniform/clothing assistance.

3,116

**TOTAL NUMBER OF
STUDENTS VISITED IN SY2022**

559

**TOTAL NUMBER OF
STUDENTS REFERRED**

12.5%

**INCREASE IN STUDENTS SERVED
BETWEEN SY2021 TO SY2022**

HIGHLIGHTS OF SPECIAL PROGRAMS, SERVICES AND EVENTS

2-GEN NEXT STEP PROGRAM

The Prince George's County 2-Gen Next Step Program was selected as one of two pilot programs in the State. This initiative is designed to provide former and current recipients of Temporary Cash Assistance (TCA) with access to post secondary educational and training opportunities in order to elevate the economically challenged residents' earning potential and help them achieve economic independence. Participants of the Next Step Program initially receive free tuition, professional career counseling, and academic advising. The program offers aggressive case management and a variety of economic supports necessary to stabilize families and reduce barriers to education.

HARVEST FEAST: The Washington Redskins' Charitable Foundation hosted the annual Harvest Feast event at Fed-Ex Field in Landover, MD. for the Thanksgiving holiday, which marked the 16th year the Redskins have partnered with the Prince George's County Department of Social Services to provide meals for over 2,500 low income families. There were over 200 volunteers that packed and distributed 120,000 pounds of fresh produce and packaged foods for families in need. The volunteers also passed out over 30,000 pounds of frozen turkeys as well. The Washington Redskins and the Prince George's County Department of Social Services partnered with FedEx who delivered some of the meals to shelters and other low-income communities throughout Prince George's County.

2022 POINT IN TIME (PIT) COUNT: The Prince George's County Department of Social Services participated in the nationwide Point-In-Time (PIT) count to capture a snapshot of homeless individuals who are sheltered and unsheltered throughout the county in January 2022. "Point-In-Time" is a one-day snapshot of people who experience homelessness in a community. Through the one-day PIT count, the Department of Social Services will be able to determine where homeless individuals are staying; how long these individuals have been homeless as part of their development of strategies for homeless prevention and intervention. In partnership with Prince George's County's Continuum of Care Program and the Metropolitan Washington Council of Governments, the count took place all day from 6 a.m. to midnight with a diverse group of 120+ resident and business volunteers who traveled the County to count and interview homeless individuals.

AFFIRM: The Department received a grant from the University of Maryland's Quality Improvement Center to implement two programs: All Children All Families (ACAF) and AFFIRM. All Children All Families (ACAF) promotes LGBTQ2S cultural competency among child welfare agencies through innovative resources, including an agency self-assessment tool, comprehensive staff training, and technical assistance. ACAF trainings target Child, Adult and Family Services (CAFS) staff, resource parents who are licensed by the Department of Social Services, and Treatment Foster Care providers. Over 90% of staff and 70% of current resource parents have received training by the 11 staff facilitators. In addition to ACAF, the AFFIRM program was also rolled out to assist youth who identify as LGBTQ and their caregivers. AFFIRM focuses on helping youth improve coping skills and provides peer support. It helps parents and caregivers celebrate, honor and validate a range of LGBTQ identities and experiences and recognize the impact of discrimination and phobia on the well-being of youth. The project has launched its first youth cohort and is recruiting for the second.

CHILD ADVOCACY CENTER (CAC): The Child Advocacy Center (CAC) was awarded a grant from the National Children's Alliance to fund a partnership with Joint Base Andrews (JBA) to identify military families who come to the CAC. This collaboration ensures better services to military families as well as easier access to victim families who reside on the military base for DSS. Grant funding has also been utilized to train a Spanish speaking interpreter on forensic interviewing and trauma informed care to support the influx of Spanish speaking referrals in the CAC and other areas within the CAFS division.

EVICTION PREVENTION PROGRAM: The Prince George's County Department of Social Services Community Services Division provides information, assistance and referrals to County residents who are facing homelessness, eviction and/or foreclosure. This program provides: 1) Screening of applicants to determine eligibility for mortgage or rental assistance; 2) Interviewing and assessment of needs; 3) Counseling, information and referral; 4) Landlord and tenant mediation; 5) Follow-up and linkages to other available resources. In FY22, this program served 984 households and provided \$1,320,163 in mortgage and rental assistance to County residents.

THE FAMILY INVOLVEMENT TEAM conducts Family Involvement Meetings (FIM) during key Child Welfare points such as Removal or Considered Removal, Placement Change, Recommendation for Permanency Plan Change, Youth Transition Plans, and Voluntary Placement Agreements. The goal is to develop service plan recommendations for the safest and least restrictive placement for a child while considering appropriate permanency and well-being options.

HOLIDAY SHARING: The Prince George’s County Department of Social Services Community Services Division’s (CSD) Holiday Sharing (Adopt-a-Family) campaign is a County wide effort to connect low-income households being served by the agency with donors in the community who want to “adopt” a family for the Thanksgiving and/or Christmas holidays. During the 2021 Thanksgiving and Christmas holiday season: 1) over 100 households were matched with Thanksgiving baskets of food from 28 community donors; 2) 75 households were matched with Thanksgiving baskets of food provided by Shabach Ministries, Inc; 3) 359 families were referred for toy for tots; 4) 109 households were matched with Christmas food baskets; 5) 94 households were matched with toys from 26 donors; and 6) 46 households were served out of CSD’s “Santa Shop” at the main office location in Landover, MD.

MASS CARE AND SHELTERING: The Prince George’s County Department of Social Services, in collaboration with the Government Office of Homeland Security (OHS), Office of Emergency Management (OEM), and nongovernmental organizations (NGO), work to address the need for temporary shelter and mass care during and after a large-scale emergency and/or major disaster. During the past year the Department has responded to the Woodside Fire/Flooding Evacuation where we serviced the 200 units that were evacuated. The Department also provided mass care response to heat advisories through the provision of water and cooling centers for residents.

MARYLAND MARKET MONEY: The Maryland Market Money (MMM) is a program aimed at reducing food insecurity by increasing the purchasing power of food-insecure-households that spend federal nutrition benefits such as SNAP (Supplemental Nutrition Assistance Program), FMNP (Farmers Market Nutrition Program), and WIC FVC (Women, Infants, and Children) at participating farmers markets. The Goals of MMM are to: increase access to quality nutrition for food-insecure households; support the viability and sustainability of farmers markets, especially in areas where access to fresh foods is otherwise scarce; and generate additional revenue for local farmers and producers. Participating farmers markets issue up to \$5 per market day in matching dollars to food-insecure market patrons to spend at participating farmers markets. Matching dollars are distributed as \$1 metal tokens by market staff at the central market table to customers. Patrons may spend \$5 for \$10 worth of food items.

PRINCE GEORGE’S COUNTY HEALTH CONNECT is the Capital South Connector Entity (CE) under the Maryland Health Benefit Exchange (MHBE). The MHBE makes health coverage affordable and more accessible for residents through Maryland Health Connection (MHC), the state’s health insurance marketplace under the Patient Protection and Affordable Care Act (ACA). Prince George’s County Health Connect provides access to education, information, and enrollment assistance to Prince George’s County. A comprehensive program led by the Department of Social Services and community partners reaches out to residents ages 18-64 years of age and their families to provide in-person assistance in several locations across the County. As of September 2022, the number of County residents enrolled in Maryland Health Connection is approximately 200,000 individuals in Medicaid and over 22,000 individuals in private Qualified Health Plans (QHP).

PUBLIC ASSISTANCE TO ENTREPRENEURSHIP (PA2E): The Prince George’s County Department of Social Services, in partnership with the Maryland Department of Human Services and the Small Business Development Centers (SBDC), launched the Public Assistance to Entrepreneurship (PA2E) program in April 2019. The goal of the PA2E program is to provide entrepreneurship training for customers with ideas, talent, and drive who are in pursuit of their entrepreneurial dreams of starting a small business while supporting their families. The program leads to employability and self-sufficiency while at the same time promoting job creation. It provides entrepreneurship training, workforce development training, group setting with peers, SBDC business consultants, resources for funding a business venture, networking, and job skills to prospective entrepreneurs who are current recipients of the Supplemental Nutrition Assistance Program (SNAP). The training is provided by SBDC and funded with SNAP employment and training funds. The success of this program is premised on the belief that the receipt of publicly funded social network programs lowers the risk of starting a business since the fear of financial ruin is cushioned by the availability of these benefits. We have completed nine cohorts with 85 participants graduating.

THE READY BY 21 PROGRAM provides transitional resources and services to youth in foster care, starting at age 14 up until age 21 to prepare them for life after foster care and to assist them with making a successful transition to adulthood. These services focus on developing and enhancing their social and emotional support systems, social skills, proficiency in education, employment status and goals.

YOUTH HOMELESS DEMONSTRATION PROGRAM: The County was notified in August of 2019 that it was selected as a grant recipient for the “Youth Homelessness Demonstration Program” to support the development and implementation of a coordinated community approach to preventing and ending youth homelessness for households where no member of the household is older than 24.

COMMUNITY PARTNERS

The Department of Social Services would like to acknowledge and thank some of our many partners who have joined us in our mission.

A Wider Circle
AARP Suitland Chapter
ABH
Adoption Together
ADT (Security System)
Advanced Behavioral Health, Inc.
Aetna
All That Therapeutic Inc
Amazing Grace Baptist Church
American Red Cross National Capital Region
AmeriCorps - LAYC
Bell United Methodist Church
Beltsville - 7th Day Adventist
Beltsville Adventist Community Center
Bladensburg- Emerson House
Bowie State University
Bowie Youth and Family Services
Boys & Girls Club
Bridge Center at Adam's House
Brighter Bites
BTI
BTST
Campfire Patuxent USA
Capital Area Food Bank
CASA De Maryland
CASE
Casey Family Programs
Catholic Charities of the Archdiocese of Washington
Center for Adoption Support & Education (C.A.S.E.)
Center for Therapeutic Concepts
Central Kenilworth Avenue Revitalization Community Development Corporation
Chick-Fil-A
Children's Guild
Children's Hospital
Christian Life Center
Chrysalis House
Circle of Friends
Circuit Court for Prince George's County
City of Bowie
City of District Heights
City of Greenbelt
City of Hyattsville
Clinton Baptist Church
College Park Youth and Family Services Bureau
Collington Life Care
Colmar Manor
Community Advocates for Family & Youth
Community Clinic Services, Inc.
Community Counseling & Mentoring Services
Community Crisis Services, Inc.
Community Support Services
CONCERN - Professional for Children & Youth, Inc
Council House
Court Appointed Special Advocate (CASA)
Crossover Church
Crossroad's Farmers Market
Deloitte Consultants
Delta Sigma Theta Sorority Inc.
Department of Environment
Destiny, Power & Purpose
District Heights Youth and Family Services Center
Doctor's Community Hospital
DORS
Double Tree/ Homewood Suites
Easter Seals
ECKERD Connects
EDSI
Elaine Ellis Center of Health
Elizabeth Seton HS
Emerita Associate professor of Social policy & Practice
Emmanuel Baptist Church
Employ Prince Georges
Exxon Gas Station
Faith Based Collaborative Outreach Group (FBCOG)
Faith Sheppard Baptist Church
Faith Tabernacle of Prayer
Family Justice Center
Family Matters of Greater Washington
Family Restoration & Healing Center
Family Services, Inc.
Family Works Together
FBC of Highland Park
First Baptist Church of District Heights
First Baptist Church of Suitland
First Baptist Church of Glenarden
First Generation College Bound
Forest Memorial United Methodist Church
Forestville Community Member
Forestville Estates Civic Association
Fort Lincoln Medicine Center
Fresh Fades Barbershop
Friendship Place
Ft. Washington Hospital
Gethsemane United Methodist Church
Gethsemane Baptist Church
Giant Food
Good News After School Club
Goodwill of Greater Washington
Governor's Office on Children
Grace Tabernacle Community Church
Greater Baden Clinic - Brandywine
Greater Baden Clinic- Capitol Heights
Greenbelt City Municipal Building
Grief Sensitive School Initiative: New York Life
Guardian Realty
Health and Arts Learning HUB
Health Care Alliance
Heat of God Community Church
Hillside Scholarship-Works
Homeless Persons Representation Project
Honored Schools
House of Ruth Maryland
Housing Initiative Partnership
Human Rights Campaign
Innovative Outlets Arts Mentoring Program (PGCPD Community Service Division)
Interdynamics Inc
International Rescue Committee
Jobs Have Priority, Inc.
Kirstins Haven
Knowledge Equals Youth Success (K.E.Y.S)
La Clinica Del Pueblo
Langley Park Multi-Service Center
Largo Community Church
Laurel Advocacy and Referral Services, Inc.
Lead4Life
Lifting out legacy Inc.
Lincoln Properties
Livin' The Light, LLC

Loads of Love
 Lutheran Social Services of the National Capital Area
 Maple Springs Baptist Church
 Marlow Heights Community Center
 Mary Center
 Maryland Department of Aging
 Maryland Department of Health
 Maryland Department of Housing and Community Development
 Maryland Department of Human Services
 Maryland Department of Juvenile Services
 Maryland Family Resources, Inc.
 Maryland Food Bank
 Maryland Hunger Solutions
 Maryland Multicultural Youth Center
 Maryland Multicultural Youth Center
 Maryland Office of Attorney General (CPS Appeals)
 Maryland-National Capital Parks and Planning Commission
 Mary's Center
 Metropolitan Baptist Church
 Mission of Love Charities
 M-NCPPC North Forestville Community Center
 Montgomery County Coalition for the Homeless
 Mr. Car
 NAI Michael Management Company
 National Center for Housing and Child Welfare
 National Organization of Black Women in Law Enforcement
 Neighbors Consejo
 New Carrollton Public Library
 New Carrollton St. Christopher's
 New Dimensions Church
 North Brentwood
 Operation Warm
 Oxon Hill Food Pantry (Interfaith Community Action Council)
 Papa John's Pizza
 Party City
 Peace City Church
 People Encouraging People
 Peppermill Community Center
 Per Scholas Inc.
 Pizza Hut
 Prevention of Blindness Society of Metropolitan Washington®
 Prince George's Child Resource Center
 Prince George's Community College
 Prince George's County Council
 Prince George's County Department of Corrections
 Prince George's County Department of Family Services
 Prince George's County Department of Housing and Community Development
 Prince George's County Health Department
 Prince George's County Library System
 Prince George's County Local Management Board
 Prince George's County Parks and Recreation
 Prince George's County Public Schools
 Prince George's County Section, National Council of Negro Women Inc.
 Prince George's County Sheriff Dept.
 Prince George's Economic Development Corp One Stop
 Prince George's Healthcare Alliance
 Prince George's Hospital Center
 Prince George's Memorial Library
 Problem Courts
 Progressive Life Center, Inc.
 Proposition Enrichment for the Next Generation
 Providence Hospital Center
 QCI Behavioral Health

Redeemed Fellowship Church
 Refreshing Spring of Church of God in Christ
 Reid Temple Church
 Right Hands for Left Hearts
 RISE Initiative
 Riverdale Park Town Hall
 Riverdale Police Department
 Roberta's House
 Salvation Army
 Sardi's
 Sasha Bruce Youthwork
 Science and Everyday Experience (SEE) Committee
 SEED (Sowing Empowerment & Economic Development, Inc)
 Senator Joanne Benson
 Seventh Judicial Circuit of Maryland
 Small Business Development Corp.
 SMYAL
 Solid Rock Missionary Baptist Church
 Soul Factory Outreach
 Southern Management Corporation
 Southern Maryland Hospital
 SouthView Service Enriched Housing
 St Stephen Baptist Church
 St. Ann's Center for Children, Youth, and Family
 St. Hugh of Grenoble Church
 Starbucks
 Talk to a Cop Program (Prince George's County Police Department Community Service Division)
 Target
 Texas Roadhouse
 The ARC of Prince George's Co
 The Bernstein Companies
 The Children's Guild
 The Christian Life Center
 The General's Future
 The New Transformation Uplift Ministries
 Thrive Behavioral Health
 Total Health Family Clinic
 Town of Bladensburg
 Town of Comar Manor
 Town of Edmonston
 Training Source Inc
 Transitional Zone Inc.
 Trinity Moravian Church
 True Deliverance Church
 Tuskegee Motorcycle Club
 United Communities Against Poverty, Inc. (UCAP)
 Unity EDC
 University of Maryland SAFE Center
 University of Maryland, College Park
 VESTA
 Veterans Administration
 Victory Grace Center
 Volunteers of America - Chesapeake
 Wal-Mart Corp.
 Washington Hospital Center
 Wegmans Grocery Store
 Westphalia United Methodist Church and K9 motorcycle Club
 Westphalia Women's Ministry
 Windsor Crossing
 Woodstream Church
 Word of Faith Church of Jesus Christ
 Youth Connect
 Zumba for Kids

WE ARE EVERYWHERE YOU ARE

Location	Address	Days at Site (if applicable)	Contact information	Services Provided by DSS staff
The Arc	1300 Mercantile Ln, # 220 Upper Marlboro, MD 20774	T, W, TH	301-925-7050 ext. 244	Processing FSP applications, redets, and resolving issues with cases
Children's Hospital	111 Michigan Ave NW Washington, DC 20010	M, W, TH, F	202-476-3934	Processing of Medicaid applications
Greater Baden Clinic-Capitol Heights	1472 Addison Rd S. Capitol Heights, MD 20743	M, W, TH, F	301-324-1500 ext. 1547	Processing of Medicaid applications
Greater Baden Clinic - Brandywine	7450 Albert Rd Brandywine, MD 20613	M, T, W, TH,	301-888-2233	Processing of Medicaid applications
One Stop Center, Largo	1801 McCormick Dr, #350 Upper Marlboro, MD 20774	M, W, TH, F	301-618-8400	TCA and FSP work activities
Dept. of Aging	6420 Allentown Road Camp Springs, MD 20748	T, TH	301-265-8452	Processing of applications, redets, and resolving issues with case for all programs
Council House	8940 Bexley Place Suitland, MD 20746	TH	301-316-7817	Processing of applications, redets, and resolving issues with case for all programs
Ft. Washington Hospital	11711 Livingston Rd Fort Washington, MD 20744	M, T, W, TH, F	301-203-7126	Processing of Medicaid applications
Southern Maryland Hospital	7503 Surratts Rd Clinton, MD 20735	M, T, W, TH	301-877-4266	Processing of Medicaid applications
Washington Hospital Center	110 Irving St., NW Washington, DC 20010	M, T, W	202-877-3978	Processing of Medicaid applications
La Union	1401 University Blvd E. Hyattsville, MD 20783	M,T,W, TH, F	301-422-3700	Processing of applications, redets, and resolving issues with cases for all programs. Target is Spanish speaking communities in the area.
LARS	311 Laurel Ave Laurel, MD 20707	W	301-209-5138	Processing of applications, redets, and resolving issues with cases for all programs
Lutheran Social Services	3799 East West Highway Hyattsville, MD 20782	Th	301-209-5199	Processing of applications, redets, and resolving issues with cases for all programs. Target population are newly arrived refugees and asylees
Greenbelt City Municipal Building	25 Crescent Rd. Greenbelt, MD 20770	M 8AM - 5PM	301-474-8000	Processing of applications, redets, and resolving issues with case for all programs
Beltsville - 7th Day Adventist	4200 Ammendale Rd Beltsville, MD 20705	M-Thursday		Processing of applications, redets, and resolving issues with case for all programs
Colmar Manor	3611 43rd Ave Brentwood, MD 20722	T & Th 2PM - 5PM		Processing of applications, redets, and resolving issues with case for all programs
Bladensburg- Emerson House	5999 Emerson St Bladensburg, MD 20710	2nd Wed 2PM - 3P	301-779-6211	Processing of applications, redets, and resolving issues with case for all programs
New Carrollton St. Christopher's	8001 Annapolis Rd New Carrollton, MD 20784	2nd Wed. 9AM - 1PM		Processing of applications, redets, and resolving issues with case for all programs

Redets = redetermination of eligibility

WE ARE EVERYWHERE YOU ARE

Location	Address	Days at Site (if applicable)	Contact information	Services Provided by DSS staff
Doctor's Community Hospital	8118 Good Luck Rd. Lanham, MD 20706 (Hospital Main Building, 2 fl, beside the Intermediate Care unit)	M, T, W, TH	301-522-8591	Processing of Medicaid applications
Providence Hospital Center	1150 Varnum St, NE Washington, DC 20017 (Financial Counseling Room 006)	M, T, W, TH	202-448-4073	Processing of Medicaid applications
Mary Center	8905 Riggs Road Adelphi, MD 20783	M, T, W, TH	301-422-5929	Processing of Medicaid applications
Community Clinic	7676 New Hampshire Ave, Ste. 220 Takoma Park, MD 20912	M, T, W, TH	301-364-3459	Processing of Medicaid applications
CSC @ Southview	1309 Southview Dr Oxon Hill, MD 20745	M, T, W, TH, F	240-830-2693	Processing of applications, redets, and resolving issues with case for all programs
Family Justice Center	14757 Main Street Upper Marlboro, MD 20772	M-F 8am - 5pm		Connecting DV victims to services
South County DO	4325 28 th Avenue Temple Hills, MD 20748			Adult Drug Court Services- Connecting participants to DSS services
Landover DO	The Bridge Center at Adam's House 5001 Silver Hill Road Suitland, MD 20746	TH, F		Processing of applications, redets, and resolving issues with case for all programs
Hyattsville DO	6505 Belcrest Road Hyattsville, MD 20782	M-F 8am-4:30pm		Processing of applications, redets, and resolving issues with case for all programs
Prince George's Hospital Center	3001 Hospital Dr Cheverly, MD 20785	Monday - Friday	301-618-3253	Processing of Medicaid applications
North Brentwood	4009 Wallace Rd North Brentwood, MD 20722	T & TH 9-1pm	301-699-9666	Processing of applications, redets, and resolving issues with case for all programs
Navigators - Hyattsville DO	6505 Belcrest Road Hyattsville, MD 20782	M-F 8am - 3pm		Processing of Medicaid and QHP applications
Navigators -Landover DO	425 Brightseat Road, Landover, MD 20785	M-F 8am - 3pm		Processing of Medicaid and QHP applications
Navigators-South County DO	4325 28 th Avenue Temple Hills, MD 20748	M-F 8am - 3pm		Processing of Medicaid and QHP applications
SEED (Sowing Empowerment & Economic Development, Inc)	6201 Riverdale Rd, Ste 200 Riverdale, MD 20737	M-F 8am - 3pm	301-458-9808	Assist patrons with submitting applications through MyDHR
CASA	8151 15 Ave Hyattsville, MD 20783	By Appt	301-270-8434	Assist patrons with submitting applications through MyDHR
La Union Mall - Langley Park Multi Service Center	1401 East University Blvd, Suite G-1 Hyattsville, MD 20783	M-F 8am - 5pm		Processing of applications, redets, and resolving issues with case for all programs

Redets = redetermination of eligibility

WE ARE EVERYWHERE YOU ARE

Location	Address	Days at Site (if applicable)	Contact information	Service Provided by DSS staff
Maryland Health Connect	Silver Hill Road District Heights, MD 20747			Processing of Medicaid and QHP applications
Community Schools Program				
Adelphi ES	8820 Riggs Road Adelphi, MD 20783	Monday - Friday	301- 431-6250	A Community School Coordinator is available to support students and families to address a variety of educational, social, and health needs.
Andrew Jackson Academy	3500 Regency Parkway Forestville, MD 20747	Monday - Friday	240-712-0858	A Community School Coordinator is available to support students and families to address a variety of educational, social, and health needs.
Annapolis Road Academy Alternative HS	2112 Church Road Bowie, MD 20716	Monday - Friday	240-495-0873	A Community School Coordinator is available to support students and families to address a variety of educational, social, and health needs.
Barnaby Manor ES	2411 Owens Road Oxon Hill, MD 20745	Monday - Friday	240-712-0859	A Community School Coordinator is available to support students and families to address a variety of educational, social, and health needs.
Beacon Heights ES	6929 Furman Parkway Riverdale, MD 20737	Monday - Friday	240-825-9410	A Community School Coordinator is available to support students and families to address a variety of educational, social, and health needs.
Benjamin Stoddert MS	2501 Olson Street Temple Hills, MD 20748	Monday - Friday	240-619-6177	A Community School Coordinator is available to support students and families to address a variety of educational, social, and health needs.
Bladensburg ES	4915 Annapolis Road Bladensburg, MD 20710	Monday - Friday	301-985-1450	A Community School Coordinator is available to support students and families to address a variety of educational, social, and health needs.
Bradbury Heights ES	1401 Glacier Avenue Capitol Heights, MD 20743	Monday - Friday	202-306-1357	A Community School Coordinator is available to support students and families to address a variety of educational, social, and health needs.
Buck Lodge MS	2611 Buck Lodge Road Adelphi, MD 20783	Monday - Friday	240-495-0711	A Community School Coordinator is available to support students and families to address a variety of educational, social, and health needs.
Calverton ES	3400 Beltsville Road Beltsville, MD 20705	Monday - Friday	301-572-0640	A Community School Coordinator is available to support students and families to address a variety of educational, social, and health needs.
Carole Highlands ES	1610 Hannon Street Takoma Park, MD 20912	Monday - Friday	240-495-0520	A Community School Coordinator is available to support students and families to address a variety of educational, social, and health needs.
Catherine T. Reed ES	9501 Greenbelt Road Lanham, MD 20706	Monday - Friday	301-918-8716	A Community School Coordinator is available to support students and families to address a variety of educational, social, and health needs.

WE ARE EVERYWHERE YOU ARE

Location	Address	Days at Site (if applicable)	Contact information	Service Provided by DSS staff
Charles Carroll MS	6130 Lamont Drive New Carrollton, MD 20784	Monday - Friday	240-495-0730	A Community School Coordinator is available to support students and families to address a variety of educational, social, and health needs.
Cherokee Lane ES	9000 25th Avenue Adelphi, MD 20783	Monday - Friday	301-445-8415	A Community School Coordinator is available to support students and families to address a variety of educational, social, and health needs.
Chillum ES	1420 Timber Ridge Lane Hyattsville, MD 20782	Monday - Friday	301-853-0825	A Community School Coordinator is available to support students and families to address a variety of educational, social, and health needs.
Clinton Grove ES	9420 Temple Hill Road Clinton, MD 20735	Monday - Friday	301-599-2414	A Community School Coordinator is available to support students and families to address a variety of educational, social, and health needs.
Cool Spring ES	8910 Riggs Road Adelphi, MD 20783	Monday - Friday	301-431-6200	A Community School Coordinator is available to support students and families to address a variety of educational, social, and health needs.
Cooper Lane ES	3817 Cooper Lane Landover Hills, MD 20784	Monday - Friday	301-925-1350	A Community School Coordinator is available to support students and families to address a variety of educational, social, and health needs.
Cora L. Rice ES	950 Nalley Road Landover, MD 20785	Monday - Friday	240-619-6539	A Community School Coordinator is available to support students and families to address a variety of educational, social, and health needs.
Dodge Park ES	3401 Hubbard Road Landover, MD 20785	Monday - Friday	301-883-4220	A Community School Coordinator is available to support students and families to address a variety of educational, social, and health needs.
Drew Freeman MS	2600 Brooks Drive Suitland, MD 20746	Monday - Friday	240-619-6392	A Community School Coordinator is available to support students and families to address a variety of educational, social, and health needs.
Edward M. Felegy ES	6110 Editors Park Drive Hyattsville, MD 20782	Monday - Friday	301-386-1610	A Community School Coordinator is available to support students and families to address a variety of educational, social, and health needs.
Flintstone ES	800 Comanche Drive Oxon Hill, MD 20745	Monday - Friday	301-749-4210	A Community School Coordinator is available to support students and families to address a variety of educational, social, and health needs.
Forest Heights ES	6360 Oxon Hill Road Oxon Hill, MD 20745	Monday - Friday		A Community School Coordinator is available to support students and families to address a variety of educational, social, and health needs.
Fort Washington Forest ES	1300 Fillmore Road Fort Washington, MD 20744	Monday - Friday	240-619-6004	A Community School Coordinator is available to support students and

				families to address a variety of educational, social, and health needs.
G. James Gholson MS	900 Nalley Road Landover, MD 20785	Monday - Friday	240-712-0857	A Community School Coordinator is available to support students and families to address a variety of educational, social, and health needs.
Gaywood ES	6701 97th Avenue Seabrook, MD 20706	Monday - Friday		A Community School Coordinator is available to support students and families to address a variety of educational, social, and health needs.
Gladys N. Spellman ES	3324 64th Avenue Cheverly, MD 20785	Monday - Friday		A Community School Coordinator is available to support students and families to address a variety of educational, social, and health needs.
Glassmanor ES	1011 Marcy Avenue Oxon Hill, MD 20745	Monday - Friday		A Community School Coordinator is available to support students and families to address a variety of educational, social, and health needs.
Glenridge ES	7200 Gallatin Street Landover Hills, MD 20784	Monday - Friday	240-495-0446	A Community School Coordinator is available to support students and families to address a variety of educational, social, and health needs.
International HS @ Langley Park	5150 Annapolis Road Bladensburg, MD 20710	Monday - Friday		A Community School Coordinator is available to support students and families to address a variety of educational, social, and health needs.
International HS @ Largo	505 Largo Road Largo, MD 20774	Monday - Friday		A Community School Coordinator is available to support students and families to address a variety of educational, social, and health needs.
James McHenry ES	8909 McHenry Lane Lanham, MD 20706	Monday - Friday		A Community School Coordinator is available to support students and families to address a variety of educational, social, and health needs.
Judge Sylvania Woods ES	3000 Church Street Glenarden, MD 20706	Monday - Friday	240-495-0625	A Community School Coordinator is available to support students and families to address a variety of educational, social, and health needs.
Lamont ES	7101 Good Luck Road New Carrollton, MD 20784	Monday - Friday		A Community School Coordinator is available to support students and families to address a variety of educational, social, and health needs.
Langley Park- McCormick ES	8201 15th Avenue Hyattsville, MD 20783	Monday - Friday	240-495-0786	A Community School Coordinator is available to support students and families to address a variety of educational, social, and health needs.
Laurel ES	516 Montgomery Street Laurel, MD 20707	Monday - Friday		A Community School Coordinator is available to support students and families to address a variety of educational, social, and health needs.
Lewisdale ES	2400 Banning Place Hyattsville, MD 20783	Monday - Friday		A Community School Coordinator is available to support students and families to address a variety of educational, social, and health needs.
Mary Harris "Mother" Jones ES	2405 Tecumseh Street Adelphi, MD 20783	Monday - Friday		A Community School Coordinator is available to support students and

				families to address a variety of educational, social, and health needs.
Mt. Rainier ES	4011 32nd Street Mount Rainier, MD 20712	Monday - Friday		A Community School Coordinator is available to support students and families to address a variety of educational, social, and health needs.
New Carrollton ES	8300 Quintana Street New Carrollton, MD 20784	Monday - Friday	301-918-8708	A Community School Coordinator is available to support students and families to address a variety of educational, social, and health needs.
Nicholas Orem MS	6100 Editors Park Drive Hyattsville, MD 20782	Monday - Friday		A Community School Coordinator is available to support students and families to address a variety of educational, social, and health needs.
North Forestville ES	2311 Ritchie Road Forestville, MD 20747	Monday - Friday	240-495-0756	A Community School Coordinator is available to support students and families to address a variety of educational, social, and health needs.
Oaklands ES	13710 Laurel-Bowie Road Laurel, MD 20708	Monday - Friday		A Community School Coordinator is available to support students and families to address a variety of educational, social, and health needs.
Oxon Hill MS	9570 Fort Foote Road Fort Washington, MD 20744	Monday - Friday	240-619-6222	A Community School Coordinator is available to support students and families to address a variety of educational, social, and health needs.
Port Towns ES	4351 58th Avenue Bladensburg, MD 20710	Monday - Friday		A Community School Coordinator is available to support students and families to address a variety of educational, social, and health needs.
Ridgecrest ES	6120 Riggs Road Hyattsville, MD 20783	Monday - Friday		A Community School Coordinator is available to support students and families to address a variety of educational, social, and health needs.
Riverdale ES	5006 Riverdale Road Riverdale, MD 20737	Monday - Friday	240-619-6760	A Community School Coordinator is available to support students and families to address a variety of educational, social, and health needs.
Robert Frost ES	6419 85th Avenue New Carrollton, MD 20784	Monday - Friday		A Community School Coordinator is available to support students and families to address a variety of educational, social, and health needs.
Rogers Heights ES	4301 58th Avenue Bladensburg, MD 20710	Monday - Friday	240-619-6745	A Community School Coordinator is available to support students and families to address a variety of educational, social, and health needs.
Rosa Parks ES	6111 Ager Road Hyattsville, MD 20782	Monday - Friday		A Community School Coordinator is available to support students and families to address a variety of educational, social, and health needs.
Samuel P. Massie Academy	3301 Regency Parkway Forestville, MD 20747	Monday - Friday	240-619-6292	A Community School Coordinator is available to support students and families to address a variety of educational, social, and health needs.
Springhill Lake ES	6060 Springhill Drive Greenbelt, MD 20770	Monday - Friday		A Community School Coordinator is available to support students and

				families to address a variety of educational, social, and health needs.
Suitland ES	4650 Towne Park Road Suitland, MD 20746	Monday - Friday	240-619-9822	A Community School Coordinator is available to support students and families to address a variety of educational, social, and health needs.
Templeton ES	6001 Carters Lane Riverdale, MD 20737	Monday - Friday		A Community School Coordinator is available to support students and families to address a variety of educational, social, and health needs.
Thomas Johnson MS	5401 Barker Place Lanham, MD 20706	Monday - Friday	202-253-3060	A Community School Coordinator is available to support students and families to address a variety of educational, social, and health needs.
Thomas Stone ES	4500 34th Street Mount Rainier, MD 20712	Monday - Friday		A Community School Coordinator is available to support students and families to address a variety of educational, social, and health needs.
Thurgood Marshall MS	4909 Brinkley Road Temple Hills, MD 20748	Monday - Friday	240-495-0558	A Community School Coordinator is available to support students and families to address a variety of educational, social, and health needs.
Walker Mill MS	800 Karen Blvd Capitol Heights, MD 20743	Monday - Friday	240-619-6090	A Community School Coordinator is available to support students and families to address a variety of educational, social, and health needs.
William Beanes ES	5108 Dianna Drive Suitland, MD 20746	Monday - Friday	240-619-6147	A Community School Coordinator is available to support students and families to address a variety of educational, social, and health needs.
William Paca ES	7801 Sheriff Road Landover, MD 20785	Monday - Friday	240-619-6711	A Community School Coordinator is available to support students and families to address a variety of educational, social, and health needs.
William W. Hall Academy	5200 Marlboro Pike Capitol Heights, MD 20743	Monday - Friday	240-495-0747	A Community School Coordinator is available to support students and families to address a variety of educational, social, and health needs.
William Wirt MS	6200 Tuckerman Street Riverdale, MD 20737	Monday - Friday	240-619-6026	A Community School Coordinator is available to support students and families to address a variety of educational, social, and health needs.
Woodridge ES	5001 Flintridge Drive Hyattsville, MD 20784	Monday - Friday	240-619-9789	A Community School Coordinator is available to support students and families to address a variety of educational, social, and health needs.
		Monday - Friday		A Community School Coordinator is available to support students and families to address a variety of educational, social, and health needs.
High Point HS	3601 Powder Mill Road Beltsville, MD 20705	Monday - Friday	240-619-6890	A Community School Coordinator is available to support students and families to address a variety of educational, social, and health needs.
Northwestern HS	7000 Adelphi Road Hyattsville, MD 20782	Monday - Friday	240-619-6406	A Community School Coordinator is available to support students and

				families to address a variety of educational, social, and health needs.
Mission Nutrition				
Gwynn Park High School {Dyson Rd parking lot)	13800 Brandywine Rd, Brandywine, MD 20613	select dates throughout the year, 4-6	301-209-5000	Free fresh produce
SHABACH Empowerment Center	403 Brightseat Road, Landover, MD 20785	select dates throughout the year, 4-7	301-209-5001	Free fresh produce
Victory Christian Ministries International	Doctors Community Hospital	select dates throughout the year, 4-8	301-209-5002	Free fresh produce
SEED/East Pines Community Center	5819 East Pines Dr., Riverdale, MD 20737	select dates throughout the year, 4-9	301-209-5003	Free fresh produce