

Enhancing the Health of the People and Communities We Serve

Prince George's County Board of Health
March 8, 2022



Tori Bayless, CEO
Luminis Health

Deneen Richmond, President
Luminis Health Doctors Community
Medical Center



Luminis Health strategic framework



MISSION

To enhance the health of the people and communities we serve.

VISION

LIVING HEALTHIER TOGETHER

VALUES

Respect, Inclusion,
Service, Excellence



QUALITY

Q'ed up: We provide high quality health care based on access, experience, and innovation



COMMUNITY

Better together: We lead through partnership and collaboration within the health ecosystem



WORKFORCE

A team: We are a talented, engaged, inclusive, diverse, equitable, and healthy team



GROWTH

Think big: We expand access to care when, where, and how it is needed across the region



FINANCE

Smart money: We are responsible stewards of our resources, investing in the health and wellbeing of our organization and community

Luminis Health



3 Hospitals **8** Counties
80+ Care sites



\$1.2 Billion
Operating revenue



6,500+
Employees



741 Total licensed beds



35,400+
Inpatient admissions



1,430
Volunteers



156,000+
Emergency visits



1,800
Medical staff



\$88.2 Million
Community benefit

Luminis Health Doctors Community Medical Center



336 Total licensed beds



\$254 Million
Operating revenue



1,600+
Employees



43,500
Emergency visits



9,900+
Inpatient admissions



100+
Volunteers



29,000
People received outreach
and education services



700
Medical staff



6,200
Surgical services
procedures



\$20.9 Million
Community benefit



2,300
IR/Cath lab
procedures

Living Healthier Together

Awards and Recognitions

- *U.S. News & World Report's* **high performing hospital** in heart failure, stroke, kidney failure, chronic obstructive pulmonary disease and pneumonia
- **Stroke Gold Plus** Achievement from the American Heart Association/American Stroke Association
- 2020 **Hero of the Year** Award by the Prince George's County Chamber of Commerce
- Third consecutive gold-level rating in **Wellness at Work** Award by the Healthiest Maryland Businesses program
- Maryland Institute for Emergency Medical System's **primary stroke center** designation



Investing in Our Community

Workforce

- Living wage and competitive rates
- Professional development
- Tuition assistance and loan reimbursement
- Enhanced benefits
- Well-being focus
- Diversity recruitment

Clinical

- Acute care surgery expansion
- Intensivist and anesthesiology medical groups
- Telemetry capability
- Behavioral health
- Health equity

Infrastructure and Technology

- Campus infrastructure (e.g. roof, air handlers, elevators, etc.)
- Laboratory modernization
- Surgical services renovations
- Epic electronic health record
- Radiology equipment

Behavioral Health in the Era of COVID-19

Washington Post

December 20, 2021

The Pandemic Could Drive Another National Health Crisis, GAO warns: Anxiety

- African Americans and Latinos who were hospitalized 2.8 times more.
- Health care workers who fear catching COVID-19, worry about giving it to family members and suffer from exhaustion, burnout and the emotional toll of watching people die.
- Children whose school closures produced stress and limited access to behavioral health screenings, while keeping them at home with adults whose COVID-19 experiences could lead to negative consequences in the home, such as substance abuse.
- People with preexisting behavioral health issues whose conditions could worsen with isolation, unemployment and an inability to connect with treatment.
- Young adults whose craving for socializing has been thwarted by the pandemic.
- People in financial distress whose regular problems, including difficulty affording food, housing and transportation, are exacerbated by the fear of COVID-19.

<https://www.washingtonpost.com/politics/2021/12/20/pandemic-mental-health-crisis-gao-report/>



Behavioral Health in the Era of COVID-19

The State of Mental Health in America

- In 2019, just prior to the COVID-19 pandemic, 19.86% of adults experienced a mental illness.
- Suicidal ideation continues to increase among adults in the U.S.
- A growing percentage of youth in the U.S. live with major depression.
- Rates of substance use are increasing for youth and adults, even prior to the COVID-19 pandemic.

<https://www.mhanational.org/issues/state-mental-health-america>



Behavioral Health Needs in the Community

- **Only two acute care units** for inpatient behavioral health in Prince George's County.
- 2019 Prince George's County Community Health Needs Assessment
 - More than 34% of adults experiencing at least **one day of poor mental health** a month.
 - 15% of adults experiencing **poor mental health for at least one week** in a month.
 - More than half of the adult admissions **admitted to out-of-county hospitals**.
 - More than 900 patients required hospital-to-hospital **transfer for psychiatric admissions**.
 - 65 **suicide deaths** in 2019.



Behavioral Health

Bringing Care Close to Home

Supported by \$20M capital grant from County Executive Alsobrooks and the Prince George's County Council

Services Offered

- Outpatient Services (Summer 2022)
 - Outpatient mental health clinic
 - Walk-in urgent care services
 - Psychiatric day programs
 - Partial hospitalization program
 - Intensive outpatient program
 - Residential crisis program for substance use disorders
- 16-bed inpatient psychiatric unit (December 2022)

Community Benefit

- Expanded access to high-quality treatment, rehabilitation and support services for residents with behavioral health needs
- Reduced number of out-of-county admissions
- ~100 new jobs added



Behavioral Health

Project Updates – Exterior Progress

Site Work



Backfilling site utilities



Forming walls for areaways



Waterproofing foundations

Structural



Constructing elevator shaft

Structural framing for first floor of north



Installing floor

Facade & Roof



Roof waterproofing installed

Installation of metal roofing

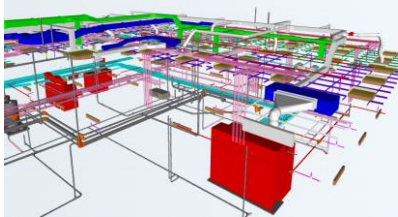


Roof and façade installed for main structure

Behavioral Health

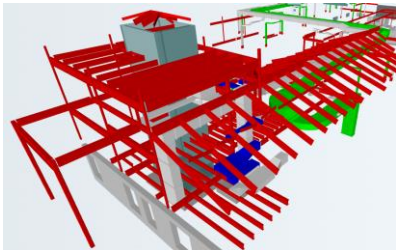
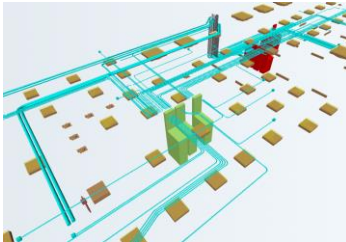
Project Updates – Interior Progress

3D Coordination



Composite coordination

Electrical system coordination



Structural framing coordination

Electrical & Mechanical



Plumbing piping installation

Main electrical gear partially assembled



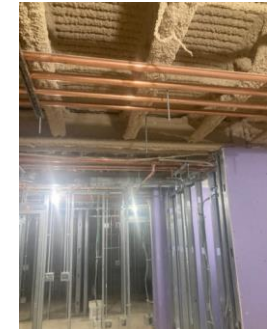
Main electrical gear

Framing & Drywall



Wall framing ongoing

Wall framing in Residential Crisis Unit



In-wall soundproofing

Behavioral Health

Construction Challenges

- Project timeline and costs impacted by the following industry-wide factors:
 - **Labor Availability**
 - Workforce challenges - reduced trades persons, vaccine mandates, COVID-related quarantining, etc.
 - **Supply Chain**
 - Reduced material availability - raw materials such as wood, metals, components, etc.
 - Production shortages - elements with electronic controls, computer chips, specialty door hardware, insulation, etc.
 - Longer delivery times - availability and reliability of delivery services.

Construction and Material Pricing Trends Snapshot

 Rising
  Declining
  Stable

Index, Commodity or Material	Current Figure	% Change from prior qtr	Past One Year Trend	% Change from prev year
Construction Industries Index	12,465	+2.9%		+8.4%
Building Cost Index	7,214	+4.9%		+14.5%
Material Price Index	4,933	+11.2%		+37.6%
Skilled Labor Index	10,881	+0.6%		+1.8%
Inputs to Construction (goods)	278	-0.4%		+18.9%
Architecture Billings Index	56.6%	-0.9%		+20.4%
Fuel (\$/gallon)	\$3.18	+0.5%		+45.4%
Oil (\$/barrel)	\$75.03	+2.1%		+86.5%
Freight (\$/ton)	\$1,883	+5.6%		+49.7%
Portland Cement (\$/cy)	\$150	-0.3%		+1.5%
Insulation - Unfaced (\$/sf)	\$7.25	+1.7%		+19.6%
Stainless Steel (\$/cwt)	\$246.21	+13.1%		+31.9%
Steel- Standard Plate (\$/net ton)				
Asphalt PG 58 (\$/ton)				
Plywood (\$/msf)				
2 X4 Common (\$/msf)				
Gypsum (\$/msf)				
4,000 PSI Concrete (\$/cy)				

November 2021 Building Materials Update

	Price	Inventories	Deliveries
Overall	Increasing	Contracting	Delayed
Adhesives	Increasing	Contracting	Delayed
Appliances	Increasing	Contracting	Delayed
Copper	Increasing	Contracting	Delayed
Drywall	Increasing	Contracting	Delayed
Electrical Equipment	Increasing	Contracting	Delayed
Fabricated Metals	Increasing	Stabilizing	Delayed
Freight	Increasing	Contracting	Delayed
Furniture	Increasing	Stabilizing	Delayed
Glass	Stabilizing	Contracting	Delayed
HVAC Equipment	Increasing	Contracting	Delayed
Janitorial	Stabilizing	Stabilizing	Delayed
Joist and Deck	Increasing	Contracting	Delayed
Lumber	Decreasing	Stabilizing	Delayed
Oriented Strand Board (OSB)	Decreasing	Stabilizing	Delayed
Plumbing Fixtures	Increasing	Stabilizing	Delayed
PPE	Stabilizing	Stabilizing	Delayed
PVC	Increasing	Contracting	Delayed
Steel	Increasing	Contracting	Delayed
Transportation Equipment	Increasing	Contracting	Delayed
Warehouse and Logistics	Increasing	Contracting	Delayed

Source: Manufacturing & Services PMI™ Institute for Supply Management Gilbane Supplier Network

Behavioral Health

Bringing Care Close to Home

Capital Budget \$ 23,500,000

MBE Engagement and Contracting

• MBE contracts	17%	\$ 3,907,282
• CMBE contracts	1%	\$ 239,599
• TOTAL	18%	\$ 4,146,881
• MBE/CMBE goal	20%	\$ 4,700,000

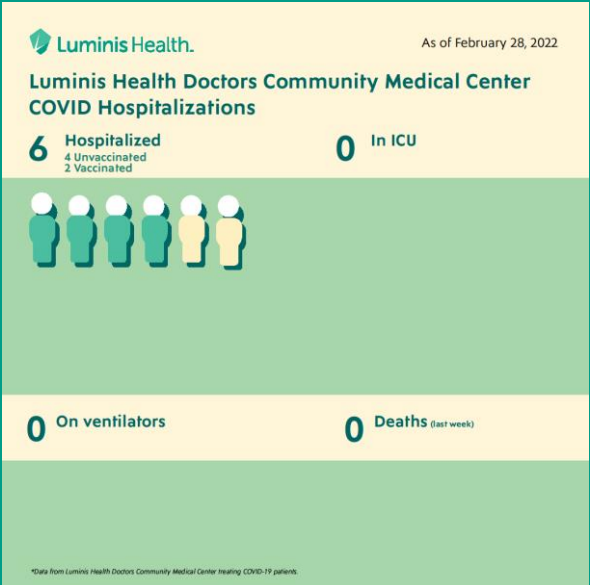
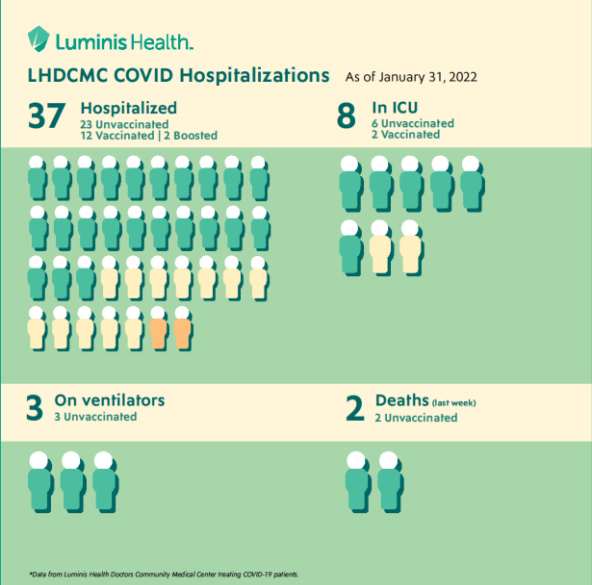
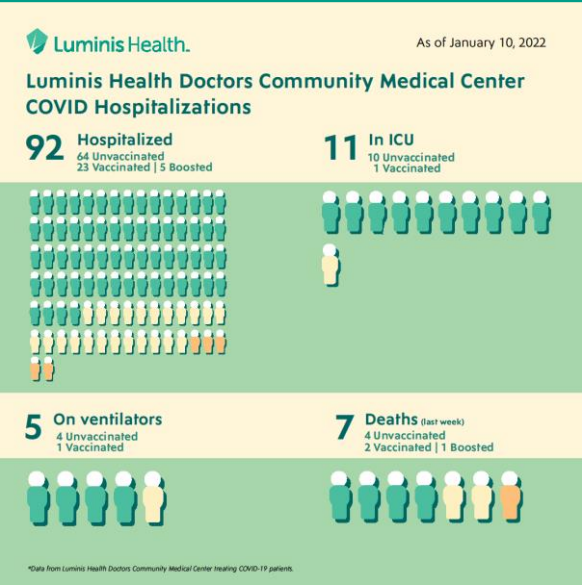
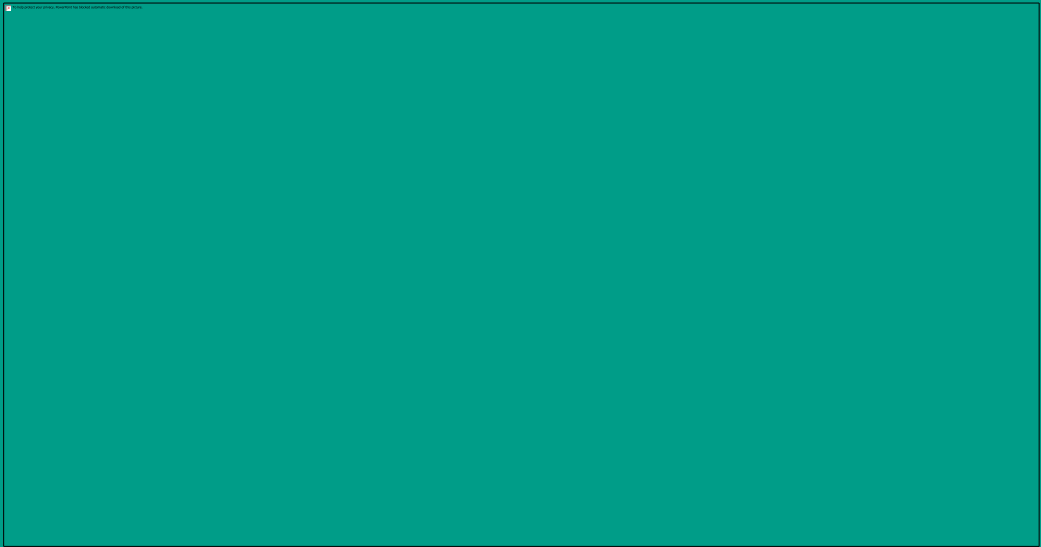
Hours Worked by Prince George’s County Residents 4,963

Engaged MBE/CMBE Companies

ABI	Gaithersburg, MD
All Star Flooring	Beltsville, MD
Chesapeake Healthcare Planning	Bowie, MD
Arel Architects	Temple Hills, MD
Litehouse Distribution & Supply	White Marsh, MD
Broadway Electric Supply Co.	Lutherville, MD



Luminis Health COVID Hospitalizations



Luminis Health Vaccine and Testing Outreach

- **Community Education on COVID-19 Prevention (3Ws)**
- **Two State of Maryland/National Guard Testing Sites**
 - 10,180+ total tests administered between 12/31/2021 and 2/28/2022
- **Three Luminis Health Testing Sites**
 - Anne Arundel Medical Center – 51,300+ total tests administered since 3/2020
 - Doctors Community Medical Center – 4,200+ total tests administered since 3/2020
 - First United Methodist Church of Hyattsville – 20,300+ total tests administered since 9/2020
- **Multiple Luminis Health COVID Vaccine Sites**
 - Vaccine sites at our two hospitals, community partner sites and mobile sites
 - Administered 130,000+ vaccines
 - Administered 60,000+ COVID vaccines in Prince George's County



Luminis Health HEART Force

- Met goals of 2016 Health Equity Task Force recommendations
- Exceeded initial system DEI goals
- Exposed the devastating effects of systemic inequity in 2020
 - COVID-19 racial disparities
 - System and process yielded inequities
 - Social unrest and injustice on display
- Announced HEART Force to define next level of progress to:
 - Re-envision health equity and anti-racism with a dedicated focus
 - Dismantle racism
 - Foster inclusion
 - Eliminate disparities

Health Equity and Anti-Racism Task Force





Health Equity and Anti-Racism Task Force

Recommendations 2021



Additional Investments Needed to Provide Excellent Care and Service to our Community

Investment Names	Investment Descriptions	Investment Amounts
Women's Health Pavilion	To provide parents with accessible and comprehensive obstetrics care right in their neighborhood	\$86.3 Million Investment
General Campus Infrastructure Modernization	To help upgrade an aging infrastructure – buildings, roads, parking access, etc. – with the principle focus being to further prioritize stakeholders' safety, care and convenience	\$56 Million Investment
Behavioral Health Pavilion	To help address this major health issue by providing the community with more access to high-quality and low-cost behavioral health services (inpatient and outpatient), supplements grant financing already committed by Prince George's County	\$8.5 Million Investment
Equipment Modernizations	To help the hospital upgrade equipment to provide the community with more tools that have been proven to advance care, quicken recoveries, strengthen outcomes, etc.	\$2 Million Investment
Laboratory Modernization and Expansion	To maximize opportunities to further improve quality, safety and patient care	\$1.4 Million Investment
Surgical Services and Sterile Processing Modernizations	To modify the surgical services and sterile processing physical spaces to better align them with more efficient workflows and to better accommodate the growing demand for such care	\$1 Million Investment

Questions?

