



# Prince George's County Council

## Education and Workforce Development Committee

---

Falecia D. Williams, Ed.D.  
President  
Prince George's Community College  
February 26, 2024

# Who We Are



## VISION

- The region's premier center for dynamic teaching and learning, strategic partnerships, and community engagement that advances knowledge, economic equity, and lifelong personal development

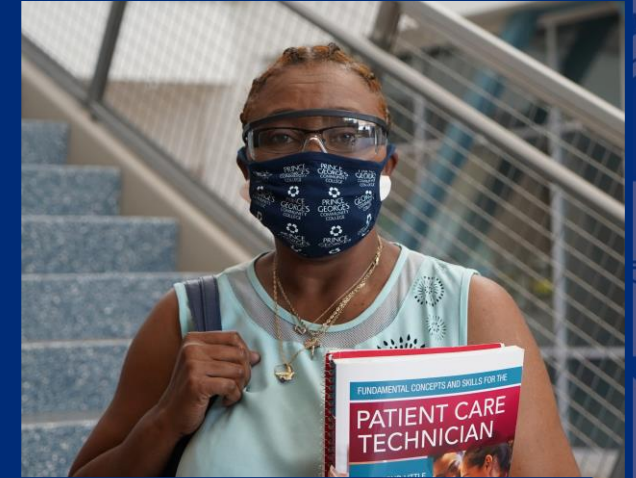
## MISSION

- To provide high-quality, transformative learning experiences that enrich lives and empower students to earn credentials leading to personal development, professional advancement, and economic prosperity

# Who We Are

## CORE COMMITMENTS

- Students First
- Achievement
- Continuous Improvement
- Empathy
- Equity
- Integrity





# Who We Are

Leading with the Motto  
“Dare to Be  
**EXTRA**ordinary”



# Who we are

## BY 2030...

- Post-secondary participation rate for each high school exceeds 50%.
- College graduation rate exceeds 60%.
- Four-year graduation and transfer rate exceeds 70%.
- Thirty percent of graduates complete an Associate degree and a Bachelor's degree within six years.





# Who We Are

## BY 2030...

- 50,000 workers earn a workforce credential
- Public, private philanthropic partnerships finance at least 1000 full-tuition scholarships annually including holistic support resources.
- The college will have a system of comprehensive campuses and workforce/skill trade centers.



# Who We Are

## Strategic Goals

- Equitable Access
- Student Success
- Learning & Achievement
- Innovation And Partnerships



# What We Look Like

## Our Past

- Founded in 1958
- Commenced classes at Suitland High School with a student body of 158
- First educational institution in Prince George's County to integrate

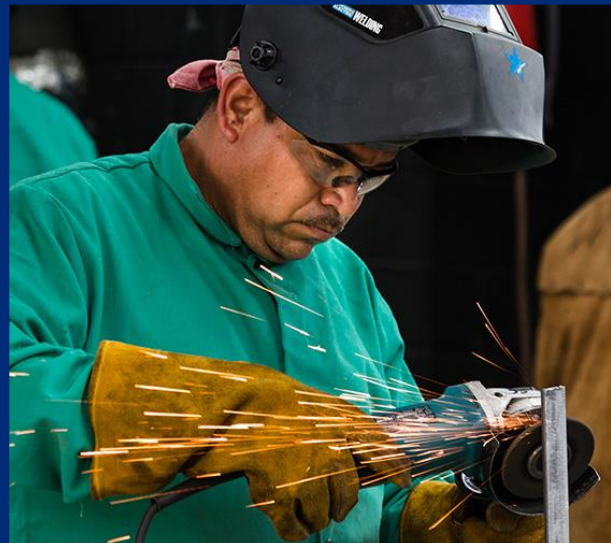




# What We Look Like

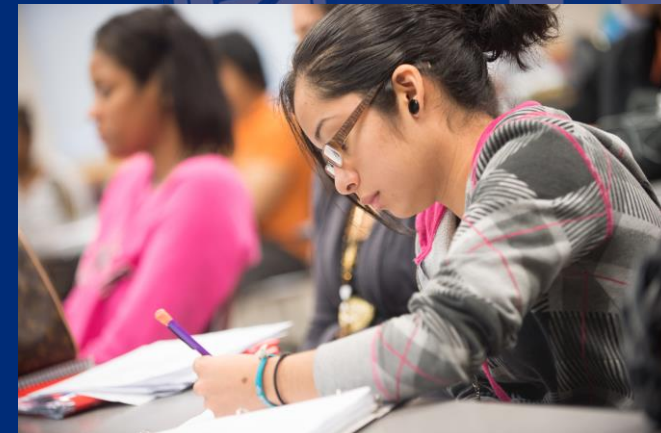
## Our Present

- 2-year public institution
- 150-acre Largo campus
  - Culinary Arts Center
  - Center for Performing Arts
  - Marlboro Hall renovation and expansion
- Five extension centers
  - Joint Base Andrews
  - Laurel College Center
  - Skilled Trades Center
  - University Town Center
  - Westphalia Training Center
- More than 200 academic and career training programs
- Nearly 25,000 students served annually
- 18:1 student-to-faculty ratio



# Outcomes & Achievement

- For every dollar invested in their education, students gained \$3.70 in lifetime earnings, amounting to an 18.5% average return on investment
- In fiscal year 2022, students achieved 71% more associate degrees and credit certificates than in fiscal year 2019



# Outcomes & Achievement

- Graduation rate is 17% for the 2021-2022 academic year – an increase of 4 percentage points increase in one year
- Preliminary graduation rate is 25% for the 2022-2023 academic year – an increase of 8 percentage points in one year





# Expansion of the College's Nursing Program

- In May 2023, the College received \$971,000 in congressionally directed funding for the expansion of the Registered Nurse (RN) and Certified Nursing Assistant (CNA) programs.



# Award to the College's Transportation Program



PRINCE GEORGE'S  
COMMUNITY COLLEGE

- In October 2023, the College was awarded \$173,640 in funding as part of the Transportation Department's Commercial Motor Vehicle Operator Safety Training (CMVOST) grant program.





# Workforce Development

- The College provides a variety of workforce development, continuing education, community education, and adult education programs and courses designed to meet the learning needs of residents, businesses, government agencies, and special populations in Prince George's County
- More than 1,100 continuing education courses, workshops, and special programs are offered each year





# TeamBuilders Academy



- TeamBuilders Academy (TBA) is a Prince George's Community College Workforce Development Program, offering cohort-based accelerated adult career training.
- TBA's mission is to provide job readiness-related soft skills training combined with occupational trade-related technical skills training.
- After instruction is provided to eligible Prince George's County residents, they are matched with local employers.

# SAGE Program

- Seasoned Adults Growing Educationally (SAGE) is a tuition-free program for senior adults aged 60 and older
- The program is an affordable option for seniors to stay active and engaged in the community. Older adults aged 60 and older who live in Maryland pay a \$40 per class registration fee



# Promise Scholarships



PRINCE GEORGE'S  
COMMUNITY COLLEGE

- The Prince George's County Promise Scholarship is designed to help students complete their education by covering costs beyond the federal, state, and other grants and scholarships they receive
- Promise Scholarships are built on the premise that a lack of financial resources should not be a deterrent to earning an associate degree or industry-recognized licensure or credential from Prince George's Community College





# Local Impact Grant Scholarships

- Prince George's Community College and Council member Edward Burroughs III have announced a **new** Impact Grant program for the 2023-2024 academic year. Eligible students can receive partial or full-time scholarship awards to cover tuition and mandatory fee expenses for credit and continuing education courses, certifications, workforce development, and senior adult programming.



# Three Campus Model



PRINCE GEORGE'S  
COMMUNITY COLLEGE

## The Concept

### Growth @ Hyattsville

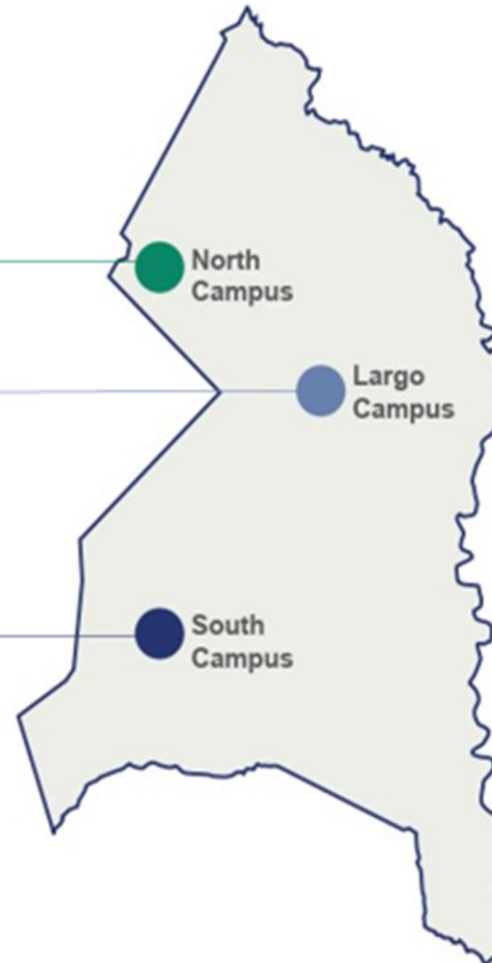
Enrollment Potential  
Urban Campus Model

### Innovation @ Largo

Economic Corridor  
Future Workforce

### Equity @ Clinton

College Presence  
Sustainable Showcase





# Capital Budget Projects

- Estimated Budget:  
\$164.4M
- Funding Source:  
Requested FY 18 - FY 25  
County \$64.4M  
State \$100.0M
- **Size:** 214,500 GSF
- **Estimated Start Date for Design:**  
Design completed
- **Estimated Start Date for Construction:**  
Under construction, December 2024



**Marlboro Hall**



# Capital Budget Projects

- Estimated Budget:

\$77.4M

- Funding Source:

Requested FY 20 - FY 27

County \$28.7M

State \$48.7M

- **Size:** 102,560 GSF
- **Estimated Start Date for Design:**  
In Design
- **Estimated Start Date for Construction:** January/February 2025



**Charlene M. Dukes Student Center**

# Capital Budget Projects

- Estimated Budget:  
\$67.1M
- Funding Source:

Requested FY 26 - FY 29	
County	\$27.3M
State	\$39.8M
- Size: 95,590 GSF
- Estimated Start Date for Design:  
Summer 2024
- Estimated Start Date for  
Construction: Summer 2027



**Bladen Hall**

# Capital Budget Projects

- Estimated Budget:  
\$1.7M
- Funding Source:  
College Supported
- **Size:** 12,600 GSF
- **Estimated Start Date for Design:**  
Phase I in design
- **Estimated Start Date for Construction:** In construction,  
anticipated completion December 2023



**WDITC Phase 1 – Annex A**



# Capital Budget Projects

- Estimated Budget:  
\$1.2M
- Funding Source:  
College Supported
- **Size:** 9,5000 GSF
- **Estimated Start Date for Design:**  
Fall 2023
- **Estimated Start Date for Construction:** Winter 2024



**Accokeek Hall Learning Commons**

# Capital Budget Projects

- Estimated Budget:  
\$17.5M
- Funding Source:  
To Be Determined
- **Size:** 4.5 Site Acres with 16,600 GSF  
Building Area
- **Estimated Start Date for Design:**  
Schematic Design Phase
- **Estimated Start Date for Construction:** Spring 2025

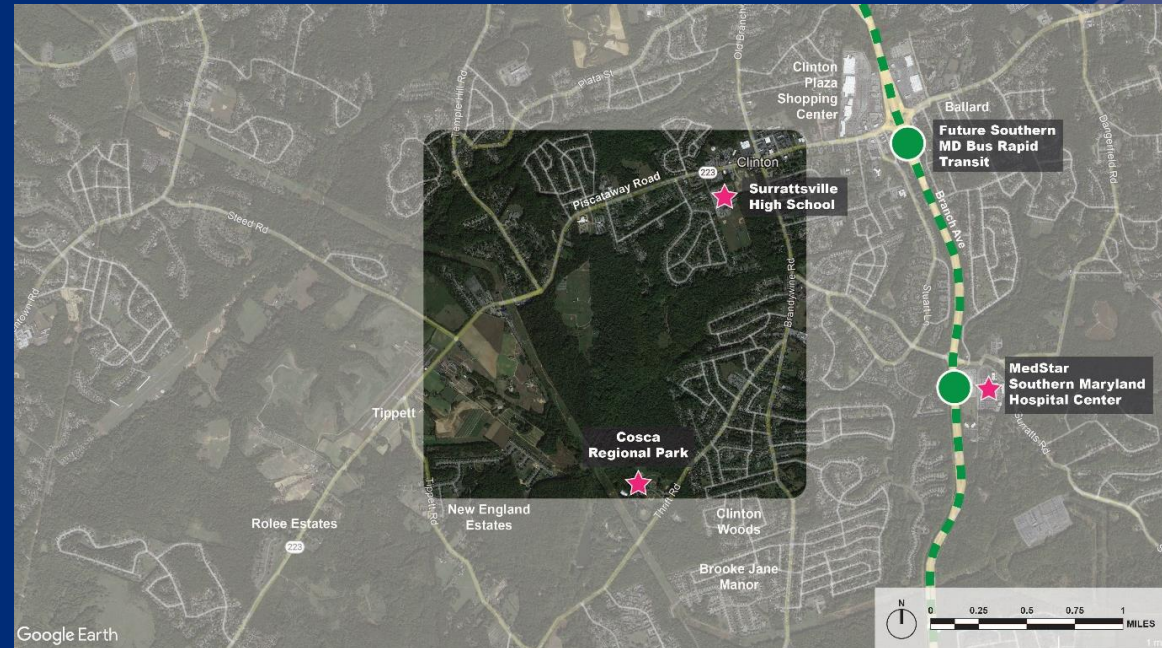


**Track & Field Athletic Complex**



# Capital Budget Projects

- Estimated Budget:  
\$200M - \$350M
- Funding Source:  
To Be Determined
- **Size:** 150-250 Acres
- **Estimated Start Date for Design:**  
Summer 2024 (Campus Site Concepts)
- **Estimated Start Date for Construction:** Summer 2026



**Southern Campus, Clinton, MD**



# Capital Budget Projects

- Estimated Budget:  
\$58.6M
- Funding Source:  
To Be Determined
- **Size:** 53,000 GSF
- **Estimated Start Date for Design:**  
Spring/Summer 2024
- **Estimated Start Date for Construction:** Spring 2026



**WDITC Phase II**

# Capital Budget Projects

- Estimated Budget:  
\$74.8M
- Funding Source:

Requested FY 27 - FY 29	
County	\$30.4M
State	\$44.4M
- **Size:** 90,300 GSF
- **Estimated Start Date for Design:**  
Summer 2026
- **Estimated Start Date for Construction:** Fall 2028



**Chesapeake Hall**



# Our Stories



## Vanessa Flage

- Alumni, Transferred to Towson University, Electronic Media and Film

*“My professors made me fall in love with learning. I really got to know them and learn about their life stories.”*





# Our Stories



PRINCE GEORGE'S  
COMMUNITY COLLEGE



## Tyree Brown

- Student, Media Production Certificate Program

*“Everything changed instantly,  
and I didn’t know what my  
future would hold.”*



# Our Stories



## Keiry Nicol Valladares

- Student, Psychology

*“I define success as being proud of yourself, working hard, and making your dreams and your wishes come true.”*



# Questions?

Thank you for your time!

Please Stay Connected



@pgccnews



PRINCE GEORGE'S  
COMMUNITY COLLEGE