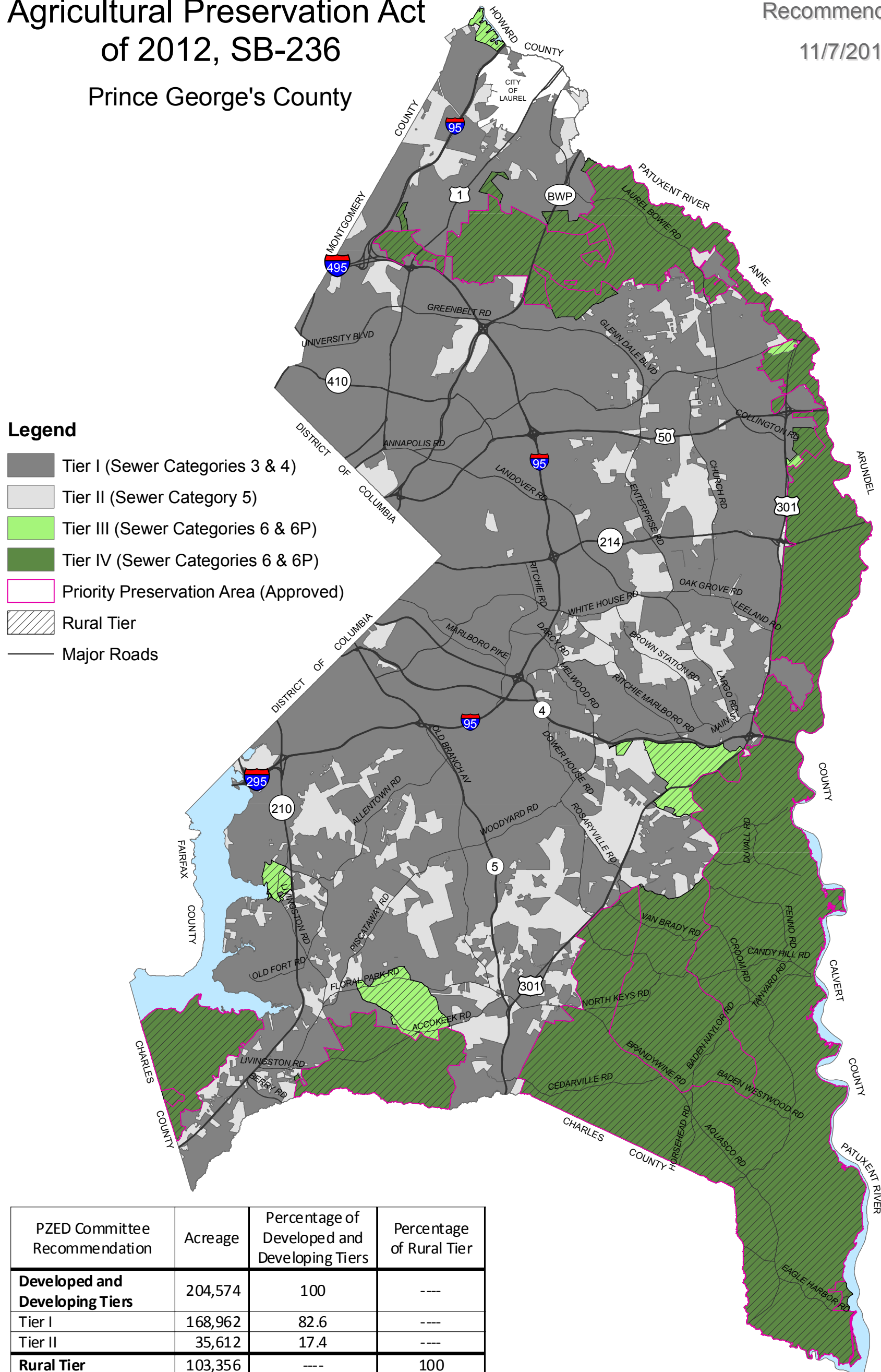


# The Sustainable Growth and Agricultural Preservation Act of 2012, SB-236

Prince George's County

PZED Committee Recommendation

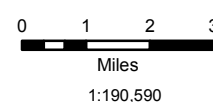
11/7/2012



PZED Committee Recommendation	Acreage	Percentage of Developed and Developing Tiers	Percentage of Rural Tier
<b>Developed and Developing Tiers</b>	204,574	100	---
Tier I	168,962	82.6	---
Tier II	35,612	17.4	---
<b>Rural Tier</b>	103,356	---	100
Tier III	5,243	---	5.1
Tier IV	98,113	---	94.9



The Maryland-National Capital Park & Planning Commission  
 Prince George's County Planning Department  
 Geographic Information System



11/7/2012

This map may not be reproduced, stored in a retrieval system, or transmitted by any form, including electronic or by photo reproduction, without the express written permission of The Maryland - National Capital Park and Planning Commission. For more information, contact the Prince George's County Planning Department in Upper Marlboro, Maryland.