

# GLENN DALE SELF STORAGE (ARCLAND DUVALL STREET)

Special Exception

Type II Tree Conservation Plan, TCPII-016-96-04

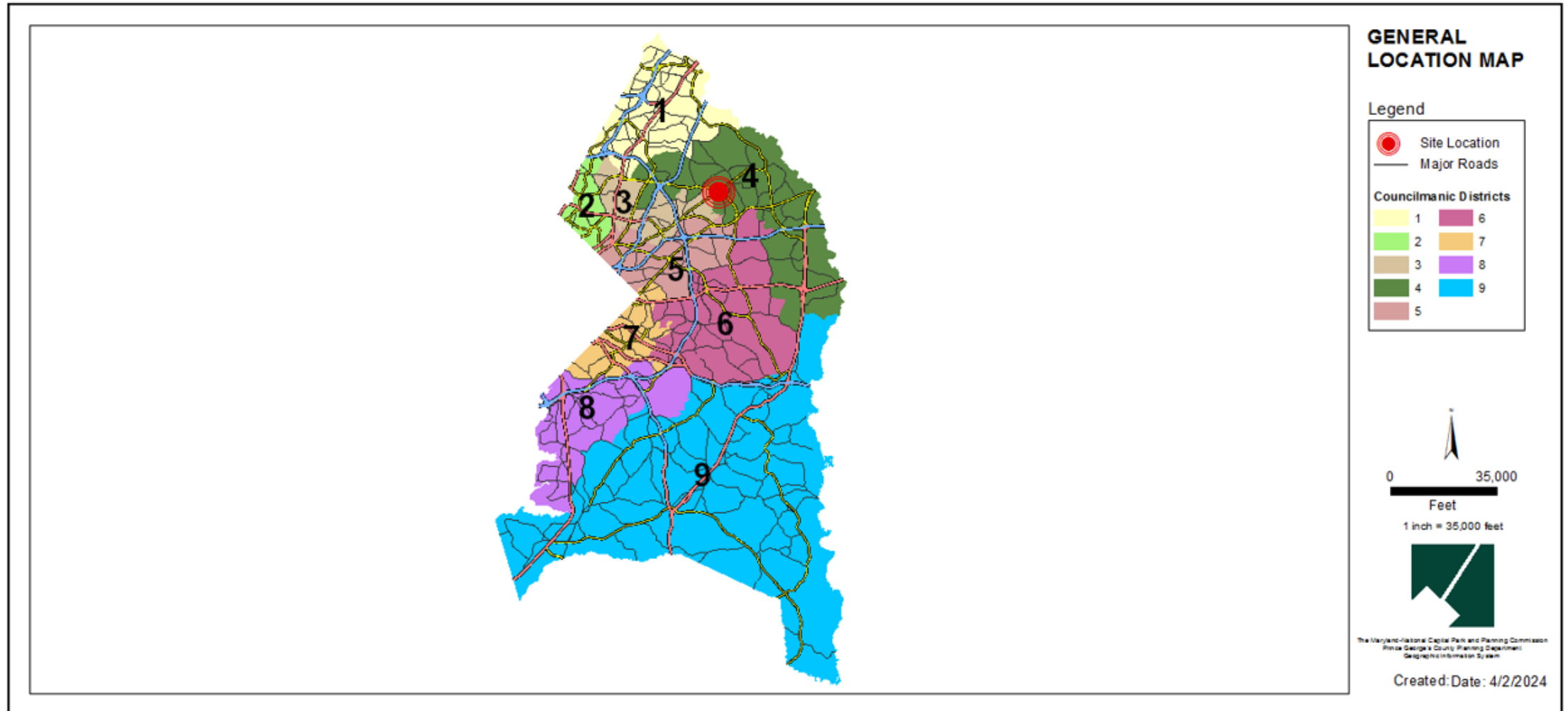
**Staff Recommendation:** APPROVAL with conditions]



# GENERAL LOCATION MAP

Council District: 04

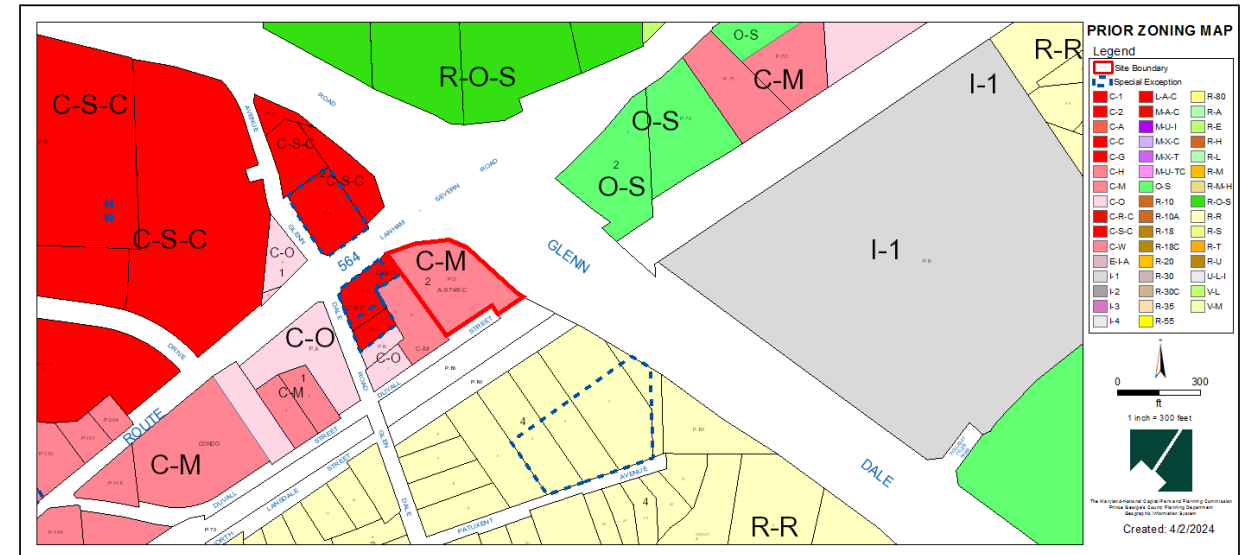
Planning Area: 70



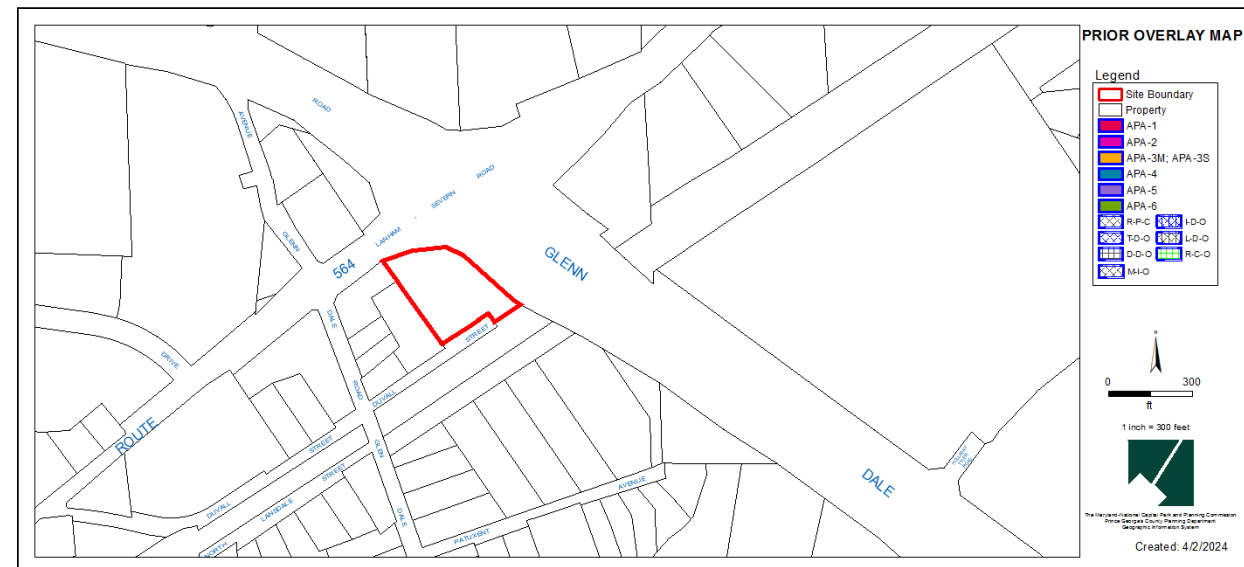
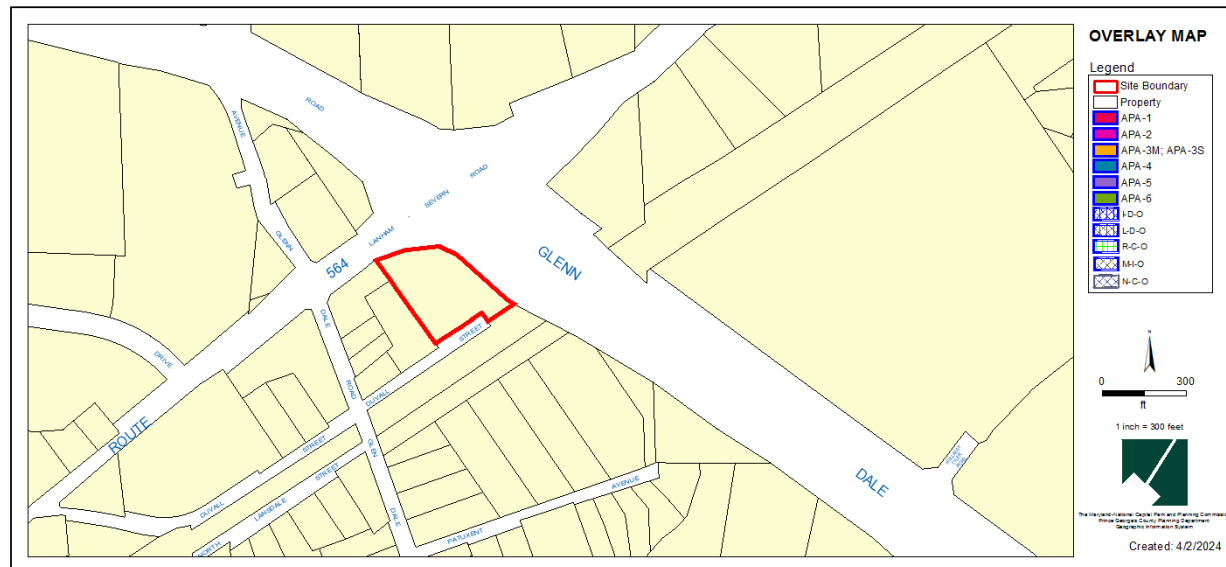




Property Zone: CS (Prior C-M)



# OVERLAY MAP (CURRENT & PRIOR)



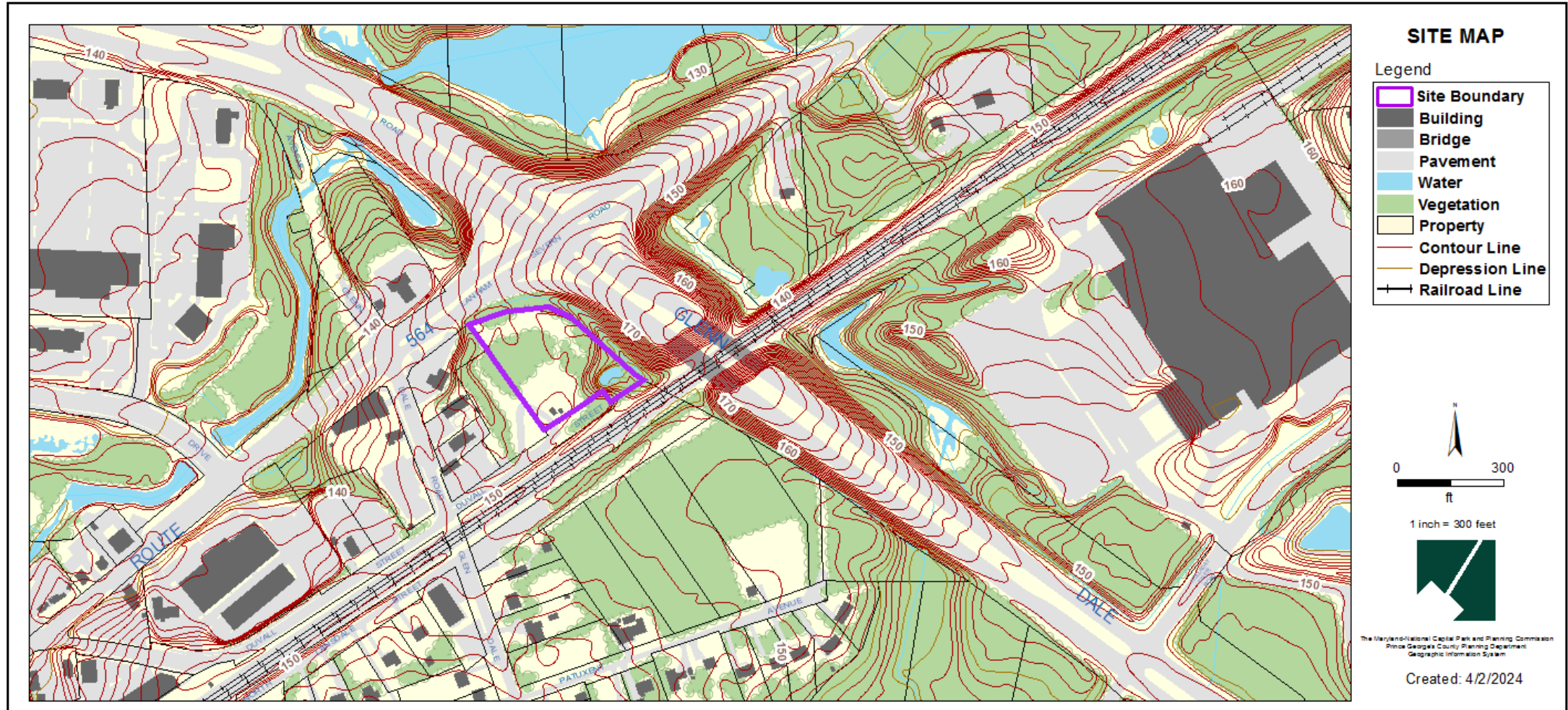


# AERIAL MAP

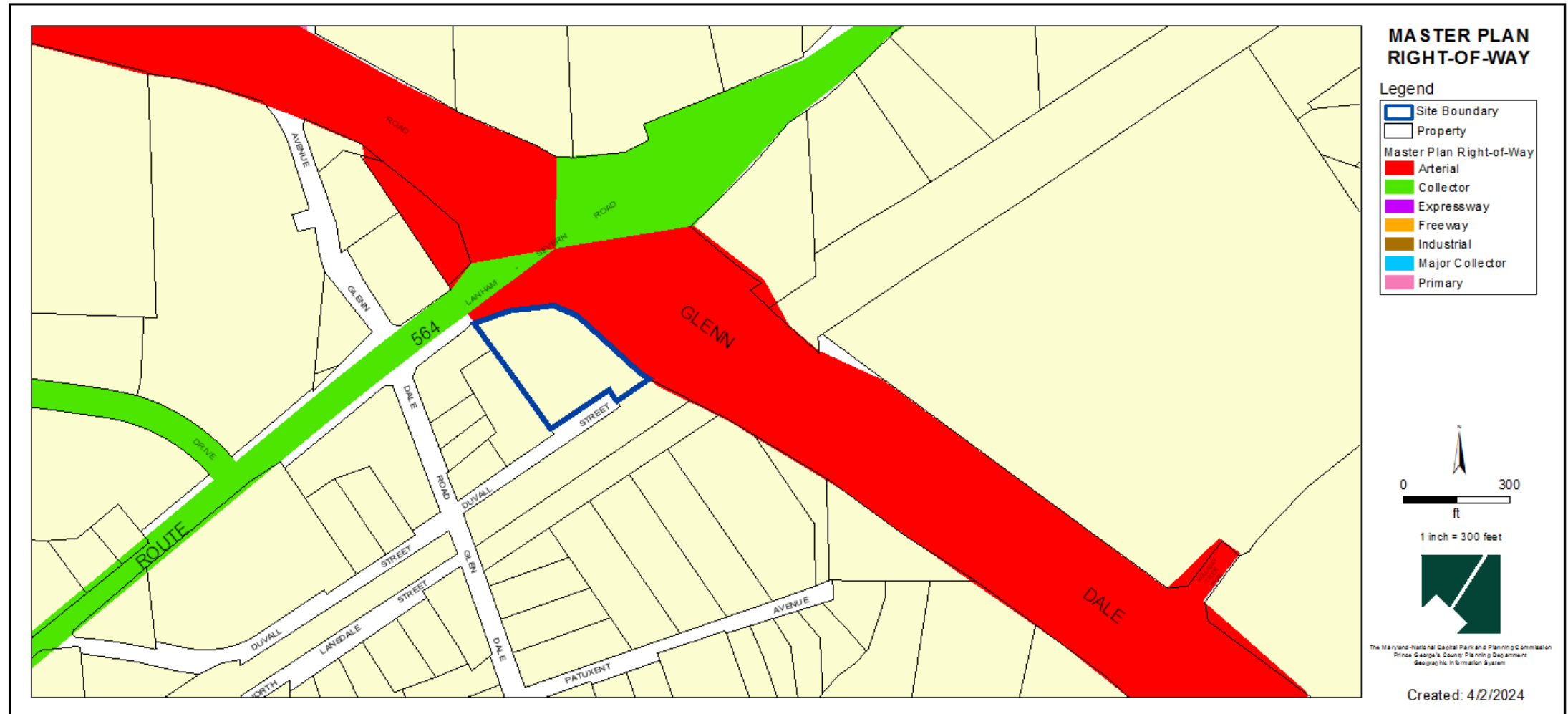




# SITE MAP



# MASTER PLAN RIGHT-OF-WAY MAP



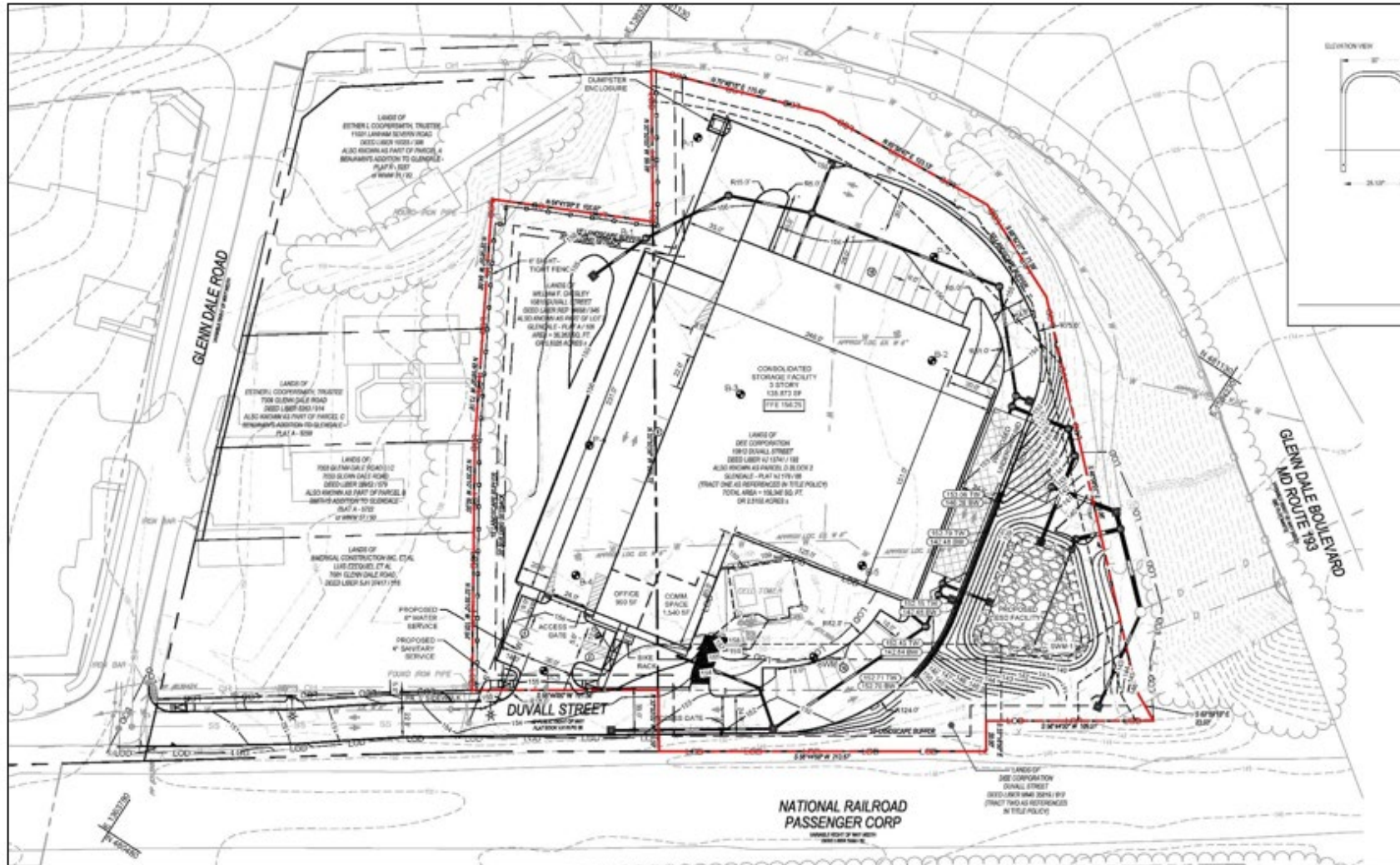


## BIRD'S-EYE VIEW WITH APPROXIMATE SITE BOUNDARY OUTLINED



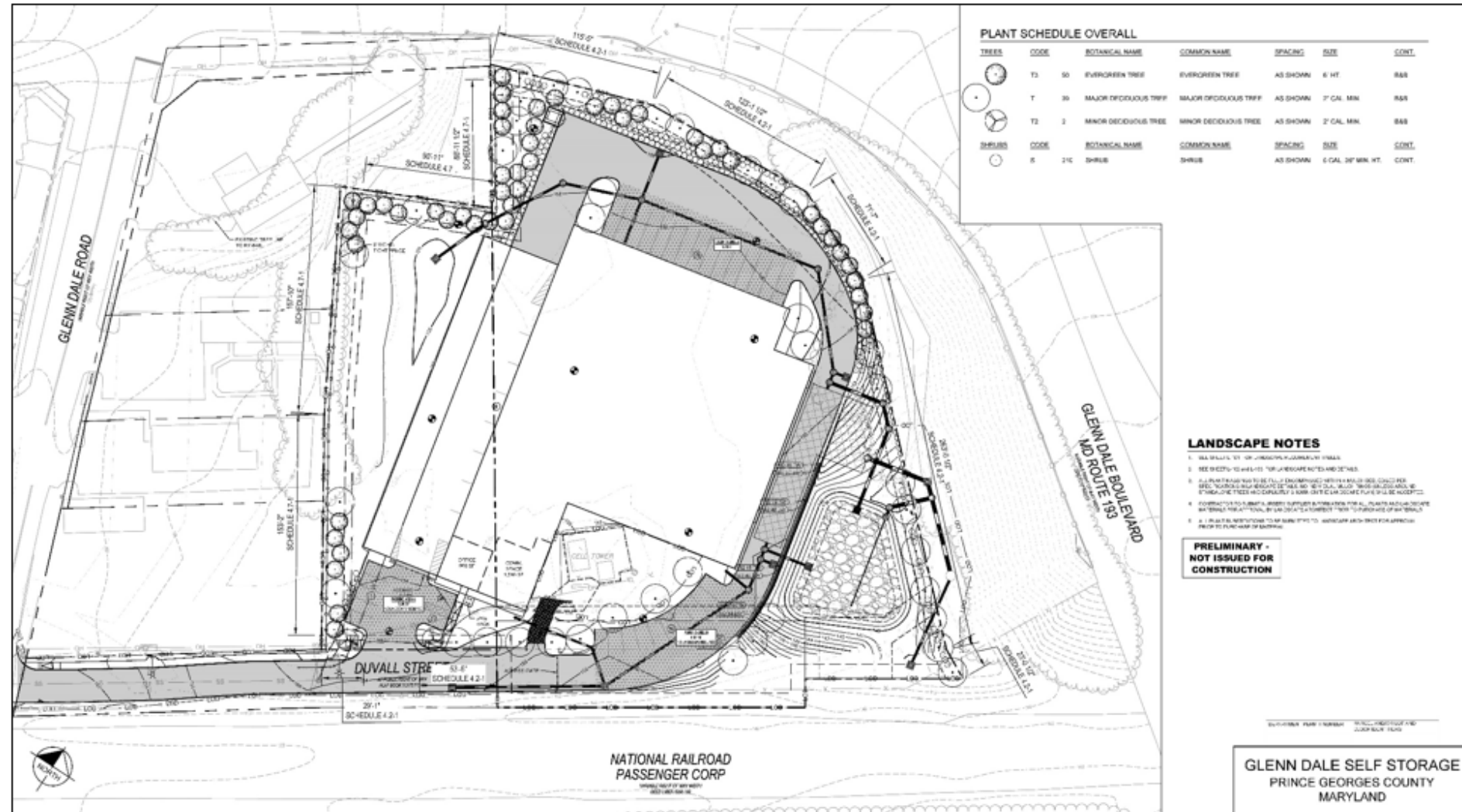


# SPECIAL EXCEPTION PLAN

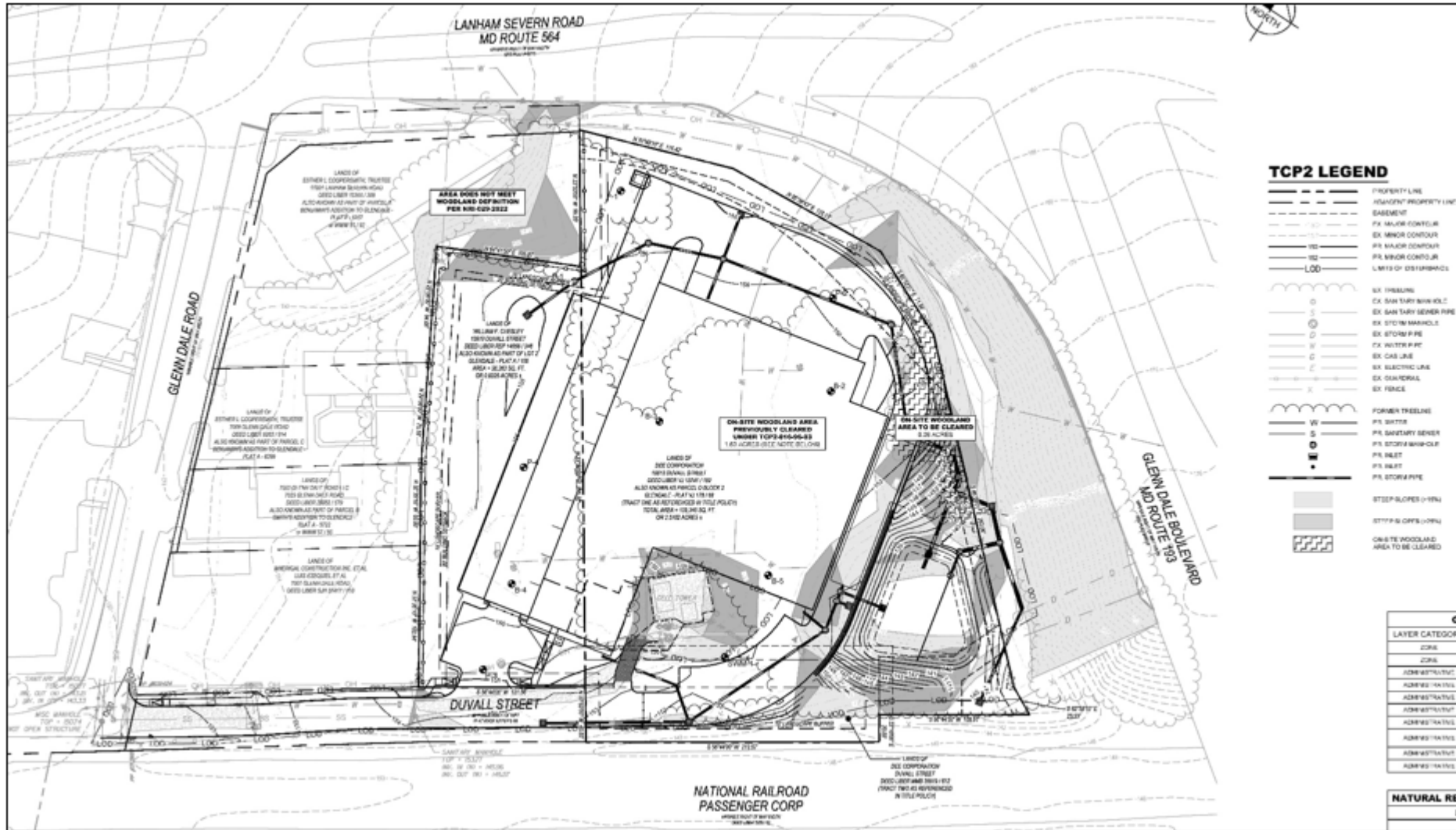




# LANDSCAPE PLAN

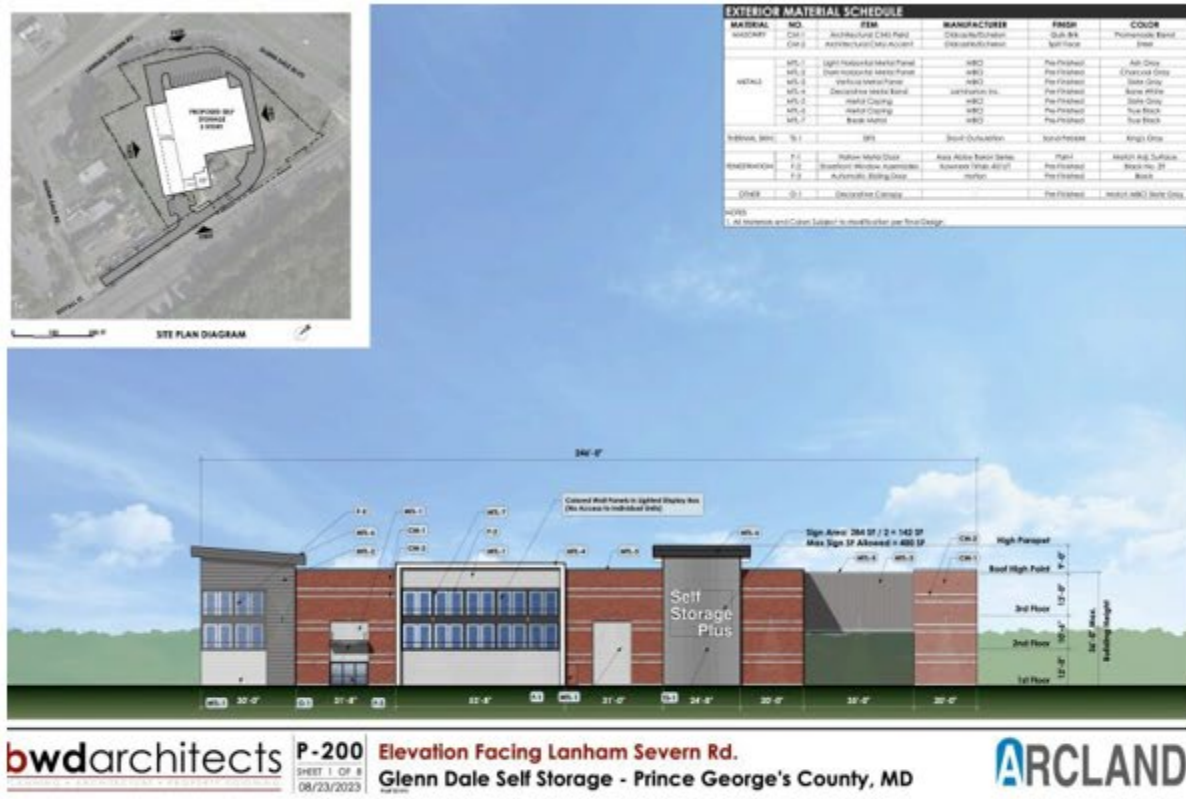


# TYPE II TREE CONSERVATION PLAN





# ARCHITECTURAL ELEVATIONS



# ARCHITECTURAL ELEVATIONS





# STAFF RECOMMENDATION

## **APPROVAL** with conditions

- Approval of SPE-2022-002 with Conditions
- Approval of TCPII-016-96-04 with Conditions

## **Major/Minor Issues:**

- None

## **Applicant Required Mailings:**

- Information Mailing – 09/02/2022
- Acceptance Mailing – 07/26/2023