

COUNTY COUNCIL OF PRINCE GEORGE'S COUNTY, MARYLAND

2012 Legislative Session

Resolution No. CR-27-2012

Proposed by The Chair (by request – County Executive)

Introduced by Council Member Davis

Co-Sponsors _____

Date of Introduction May 15, 2012

RESOLUTION

1 A RESOLUTION concerning

2 The 2008 Water and Sewer Plan (December 2011 Cycle of Amendments)

3 For the purpose of changing the water and sewer category designations of properties within the
4 2008 Water and Sewer Plan.

5 WHEREAS, Title 9, Subtitle 5 of the Environment Article of the Annotated Code of
6 Maryland requires the County to adopt a comprehensive plan dealing with water supply and
7 sewerage systems, establishes the procedures governing the preparation and adoption of said
8 plan, and provides for amendments and revisions thereto; and

9 WHEREAS, pursuant to said procedures, the County Executive submitted to the County
10 Council his recommendations on water and sewer plan amendment requests within the December
11 2011 Cycle of Amendments; and

12 WHEREAS, the County Council received testimony through an advertised public hearing
13 on the December 2011 Cycle of Amendments; and

14 WHEREAS, the County Council notified the Washington Suburban Sanitary Commission,
15 the Maryland-National Capital Park and Planning Commission, the State and County Health
16 Departments, the Maryland Department of Planning and the Maryland Department of the
17 Environment of the public hearing and provided each agency with copies of the December 2011
18 Cycle of Amendments.

19 SECTION 1. NOW, THEREFORE BE IT RESOLVED by the County Council of Prince
20 George's County, Maryland, that the Prince George's County 2008 Water and Sewer Plan, as
21 adopted by CR-91-2008, and amended by CR-17-2009, CR-52-2009, CR-5-2010, CR-19-2010,
22 CR-82-2010, CR-20-2011, CR-4-2012 and CR-19-2012 is further amended by adding the water

1 and sewer category designations as shown in Attachment A, attached hereto and made a part
2 hereof.

3 SECTION 2. BE IT FURTHER RESOLVED that maps identified as the “Prince George’s
4 County, Maryland, 2008 Water Map” and “Prince George’s County, Maryland, 2008 Sewer
5 Map”, are hereby amended to incorporate the approved category changes with the property
6 location delineated on the map in Attachment B, attached hereto and made a part hereof.

7 SECTION 3. BE IT FURTHER RESOLVED that within five working days of the adoption
8 of this Resolution, it shall be transmitted to the County Executive by the Clerk of the Council.

9 SECTION 4. BE IT FURTHER RESOLVED that this Resolution shall take effect on the
10 day following the first regularly scheduled Council meeting day which occurs after the County
11 Executive transmits his comments on the Resolution, or on the day that the County Executive
12 indicates he has no comments, or ten working days following the transmittal of this Resolution to
13 the County Executive, whichever shall occur first. Prior to the effective date of this Resolution,
14 the Council may reconsider its action based upon any recommendation received from the County
15 Executive.

16 SECTION 5. BE IT FURTHER RESOLVED that upon the effective date of this
17 Resolution, it shall be transmitted by the Clerk of the Council to the Secretary of the Maryland
18 Department of the Environment.

Adopted this 24th day of July, 2012.

COUNTY COUNCIL OF PRINCE
GEORGE'S COUNTY, MARYLAND

BY: _____
Andrea C. Harrison
Council Chair

ATTEST:

Redis C. Floyd
Clerk of the Council

WATER AND SEWER CATEGORY AMENDMENT

| Sewershed Application Council District | Development Proposal/ Tax Map Location | Acreage/ Zoning | Current Category | Requested Category | Executive's Recommendation | Council Approval |
|--|--|----------------------------|-----------------------------|-------------------------------|---------------------------------------|-----------------------------|
| <u>Blue Plains</u> | | | | | | |
| 11/BP-01 Anderson's Corner (Formerly Konterra Overlook) | A minimum 300 to a maximum of 600 residential dwelling units totaling approximately 500,000 square feet of living space; 3 or 4 retail or office buildings with a combined 100,000 square feet of floor space. | 25.08 M-X-T | 5 | 4 | 4 | 4 |
| District 1 | 9 D-1, Parcel 8 | | | | | |

APPLICATIONS

REQUEST

MAP #

Blue Plains

11/BP-01

Anderson's Corner
(Formerly Konterra Overlook)

5 to 4

1

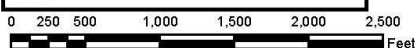
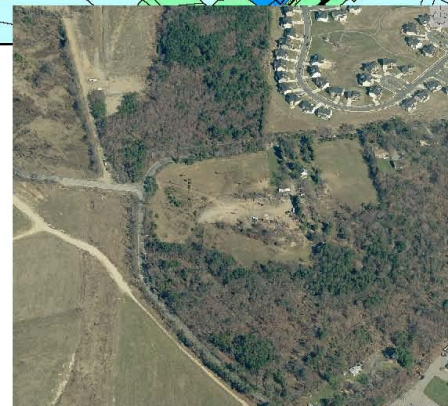
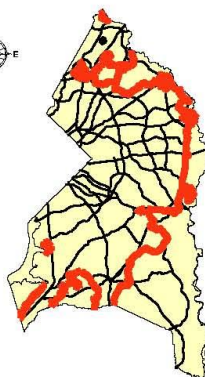
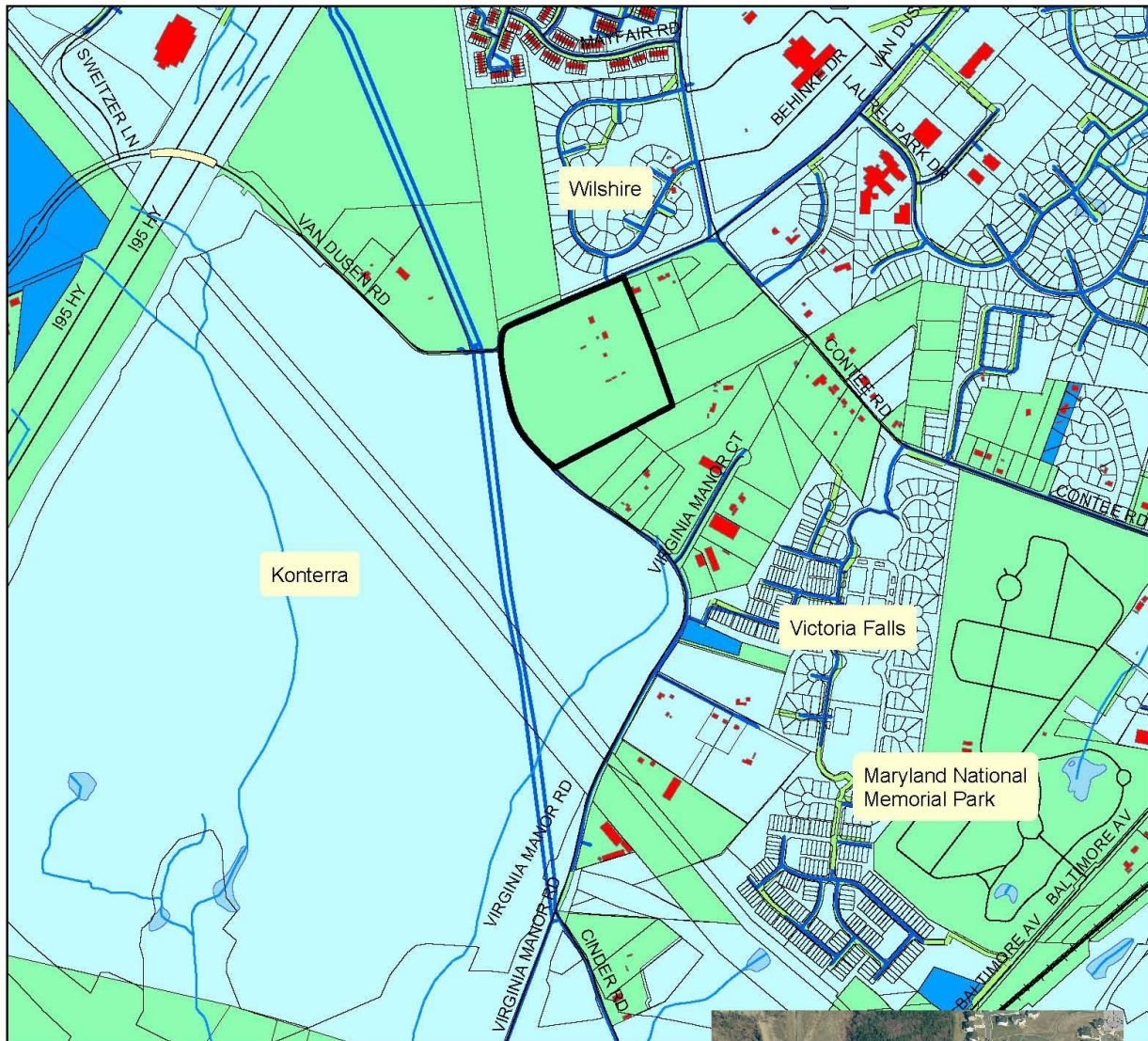
**Anderson's Corner
(Formerly Konterra Overlook)****11/BP-01**

Amendment Request

5 to 4

Water and Sewer Plan Amendments

December 2011 Application



G:\M\Bachore\leg\2011\MKD