

P A S S I O N F O R C A R I N G



# Hospital System Overview & Behavioral Health Services

Paul Grenaldo  
Chief Operating Officer

# DOCTORS COMMUNITY HOSPITAL MAIN CAMPUS AT A GLANCE



- + Available Beds – 212
- + Employees – 1,509 (877 Prince Georgians)
- + Volunteers – 394 (contributing 29,132 hours)
- + Medical Staff – 495
- + Emergency Room Visits – 57,439
- + Total Admissions – 9,725
- + Surgical Services – 35,617
- + Charity and Uncompensated Care – \$12,200,782
- + Total Inpatient Revenue – \$137,455,815
- + Total Outpatient Revenue – \$136,222,962
- + Total Overall Revenue – \$273,678,777

- 
- + 37.7 total acres
  - + 10 undeveloped acres
  - + 1,206,612 total developed square feet
  - + 435,600 unoccupied developed square feet

*Fiscal Year 2016 Data*



P A S S I O N   F O R   C A R I N G



# DOCTORS COMMUNITY HOSPITAL'S SPECIALTY PROGRAMS AND SERVICES

## Market Differentiators

- + *Joslin Diabetes Center* – only multidisciplinary program in the county accredited by the American Diabetes Association
- + *Bariatric and Weight Loss Center* – county's first hospital to provide bariatric weight loss options using the da Vinci surgical robot
- + *Center for Comprehensive Breast Care* – first program in the county with a dedicated breast surgeon
- + *Comprehensive Rehabilitation Services* – area's largest lymphedema program
- + *Primary Stroke Center* – designation from the Maryland Institute for Emergency Medical Services Systems



## Comprehensive Services

- |                             |                           |
|-----------------------------|---------------------------|
| + Ambulatory Surgery        | + Primary Care            |
| + Breast Health             | + Radiation Oncology      |
| + Diabetes Care             | + Rehabilitation Programs |
| + Emergency Services (24/7) | + Sleep Care              |
| + Gastroenterology          | + Surgical Services       |
| + Imaging Services          | + Vascular Health         |
| + Infusion Care             | + Wound Care              |
| + Orthopedic Services       |                           |



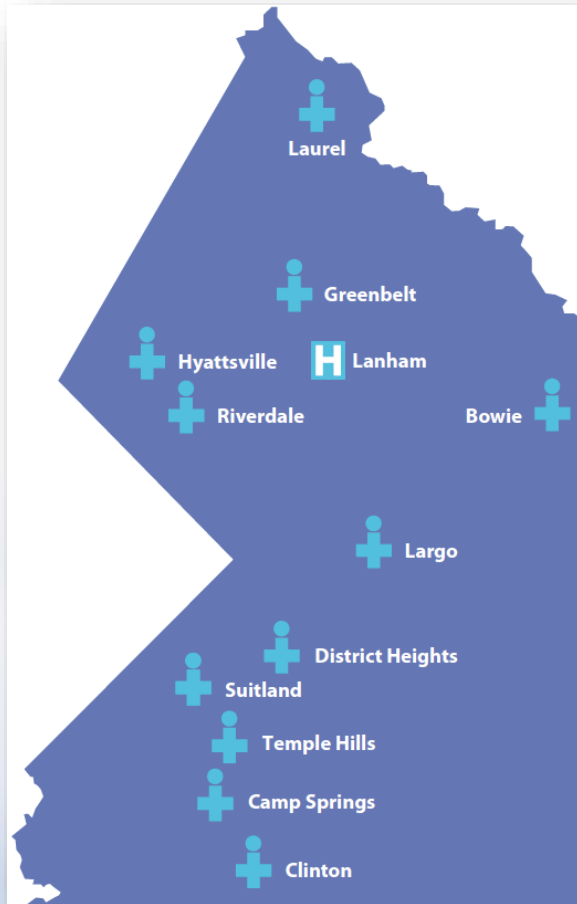
## Partnership Service

- + Catholic Charities



P A S S I O N   F O R   C A R I N G

# AMBULATORY AND OUTPATIENT SERVICES OFFSITE LOCATIONS



- + Bowie – orthopedics, radiation therapy and primary care
- + Camp Springs/Suitland – preventative health and orthopedics
- + Clinton – orthopedics
- + District Heights – primary care
- + Greenbelt – endocrinology
- + Hyattsville – preventative care and orthopedics (La Clinica del Pueblo)
- + Largo – imaging
- + Laurel – endocrinology and primary care
- + Riverdale – endocrinology, primary care and ambulatory surgery
- + Temple Hills – preventative care (Catholic Charities)

*(Opening soon – new primary care practice in Crofton)*



# ADDITIONAL INITIATIVES

## Accountable Care Organization (ACO)

- + Established in 2012
- + Owned by Doctors Community Hospital in January 2015
- + Caring for an established 12,000 beneficiaries in 2016
- + 45 practices with more than 80 providers spanning from Frederick to D.C. with the majority in Prince George's County
- + 86 percent of physicians use an electronic medical record
- + Collaborating with local and high-quality partners such as the Washington Eye Institute, Doctors Sleep Lab, Joslin Diabetes Center and Lab Corp to help facilitate care delivery
- + Overall quality rating has increased to 81 percent

## Telemedicine

- + Discussing with school system to pilot program with nurses
- + Researching the placement of devices in retail locations
- + Using currently in the Emergency Department for behavioral health services

*We have transformed into a network of care. Within the coming months, we will begin branding this network as the*  
***Doctors Community Health System.***

P A S S I O N   F O R   C A R I N G



# WELLNESS ON WHEELS MOBILE HEALTH CLINIC

- + Travels to underserved locations throughout Prince George's County including shopping centers, churches, apartment complexes, etc.
- + Provides free diabetes and blood pressure screenings as well as medication reviews and education to adults



P A S S I O N   F O R   C A R I N G



# QUALITY RECOGNITIONS



HEART FAILURE



COPD



The Joint Commission  
Top Performer on  
Key Quality  
Measures®  
2012

- Heart Attack
- Heart Failure
- Pneumonia
- Surgical Care



The Joint Commission  
Top Performer on  
Key Quality  
Measures®  
2013



The American Heart Association and American Stroke Association recognize this hospital for achieving 85% or higher compliance with all Get With The Guidelines® Stroke Achievement Measures and 75% or higher compliance with five or more Get With The Guidelines® Stroke Quality Measures for two or more consecutive years to improve quality of patient care and outcomes.

Delmarva Foundation



P A S S I O N   F O R   C A R I N G

# COMMUNITY PARTNERSHIPS

- + Preventative Health Services – Catholic Charities
- + Health Services – Mary's Center
- + Hyattsville Health Clinic – La Clinica del Pueblo
- + Congestive Heart Failure Clinic – Capital Cardiologists
- + Sickle Cell Infusion Center – Johns Hopkins
- + “On the Road” Diabetes Management Program – Prince George’s County Health Department
- + Breast, Cervical and Colorectal Cancer Programs – Prince George’s County Health Department
- + WomenHeart Support Group – National Coalition for Women and Heart Disease
- + Breast Screening Program – Susan G. Komen Foundation
- + Financial Literacy Program – Junior Achievement of America
- + Student Athlete Health Program – DuVal High School
- + Blood Drives – American Red Cross
- + Totally Linking Care in Maryland – Doctors Community Hospital, Calvert Memorial Hospital, Dimensions Healthcare System, Fort Washington Medical Center, MedStar Southern Maryland Hospital Center, MedStar St. Mary’s Hospital, Area Agencies on Aging, Maryland State Medical Society, Prince George’s County Health Department, Calvert County Health Department and primary care providers





# BEHAVIORAL HEALTH NEEDS IN PRINCE GEORGE'S COUNTY

## **Discharge Data\***

4,832 county residents ages 19 and older discharged from Maryland or District of Columbia hospitals for inpatient mental health or substance abuse services

### *Inpatient Mental Health and Substance Abuse Services Discharges – Top Three Hospitals in Prince George's County*

- + Prince George's Hospital Center – 1,283
- + Southern Maryland Hospital Center – 853
- + Laurel Regional Hospital – 471

### *Inpatient Mental Health and Substance Abuse Services Discharges – Top Three Hospitals near Prince George's County*

- + Washington Adventist Hospital – 816
- + Medstar Washington Hospital Center – 152
- + United Medical Center – 94

\* Calendar Year 2014 Maryland and District of Columbia Hospital Discharge Databases



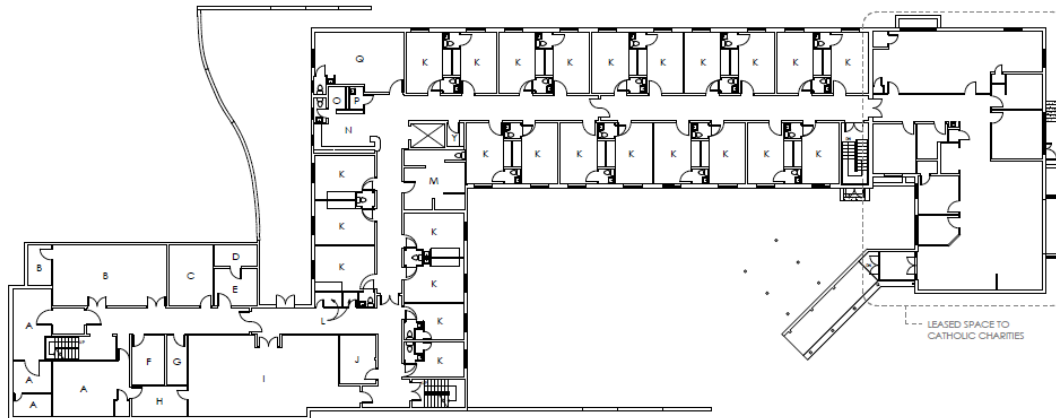
# BEHAVIORAL HEALTH AT DOCTORS COMMUNITY HOSPITAL

## Objectives

- + Increase availability and accessibility of behavioral health services to address the unmet needs of county residents
- + Reduce gap in services created with the reclassification of Laurel Regional Hospital
- + Reduce emergency department's need to "hold" mentally ill patients awaiting an available bed or transfer to another facility

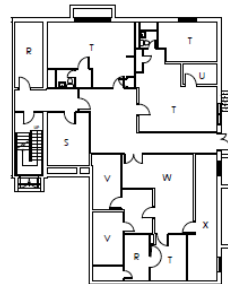
## Program

- + 16-bed inpatient and acute psychiatric unit for adults
- + Outpatient behavioral health services for adults with an adolescent component that is part of future plans
- + 30,000 square feet (renovation of existing space)
- + **\$7 to \$10 million investment**



### KEY BASEMENT & FIRST FLOOR ALL SPACES LISTED BELOW ARE CURRENTLY NOT IN USE

- A. LAUNDRY
- B. BOILER ROOM
- C. TRASH ROOM
- D. ELEVATOR ROOM
- E. HYAC ROOM
- F. WOMEN'S LOCKERS
- G. MEN'S LOCKERS
- H. REHAB TECH WORK ROOM
- I. REHABILITATION
- J. OFFICE
- K. PATIENT ROOM AND TOILET ROOM
- L. SUPPLY
- M. PATIENT SHOWER ROOM
- N. NURSING STATION
- O. SUPPLIES
- P. MEDICATION ROOM
- Q. DAY ROOM
- R. STORAGE ROOM
- S. IT ROOM
- T. OFFICE
- U. KITCHENETTE
- V. ELECTRIC ROOM
- W. CONFERENCE ROOM
- X. WATER SERVICE ROOM
- Y. HOUSEKEEPING



# QUESTIONS?

## Contact Information

Paul Grenaldo  
Chief Operating Officer  
Doctors Community Hospital  
301-552-8085  
[pgrenaldo@DCHweb.org](mailto:pgrenaldo@DCHweb.org)



P A S S I O N   F O R   C A R I N G