

# *Trending Positive*

## *Closing the Gap Between Health Outcomes and the Factors that Influence Them*

*Joseph L. Wright, MD, MPH  
Board of Health Session  
April 11<sup>th</sup>, 2017*


**2017 County Health Rankings**

**Maryland**

*University of Wisconsin-Population Health Institute and the RWJ Foundation*



# Key Definitions: Outcomes



Health Outcomes

Health Factors

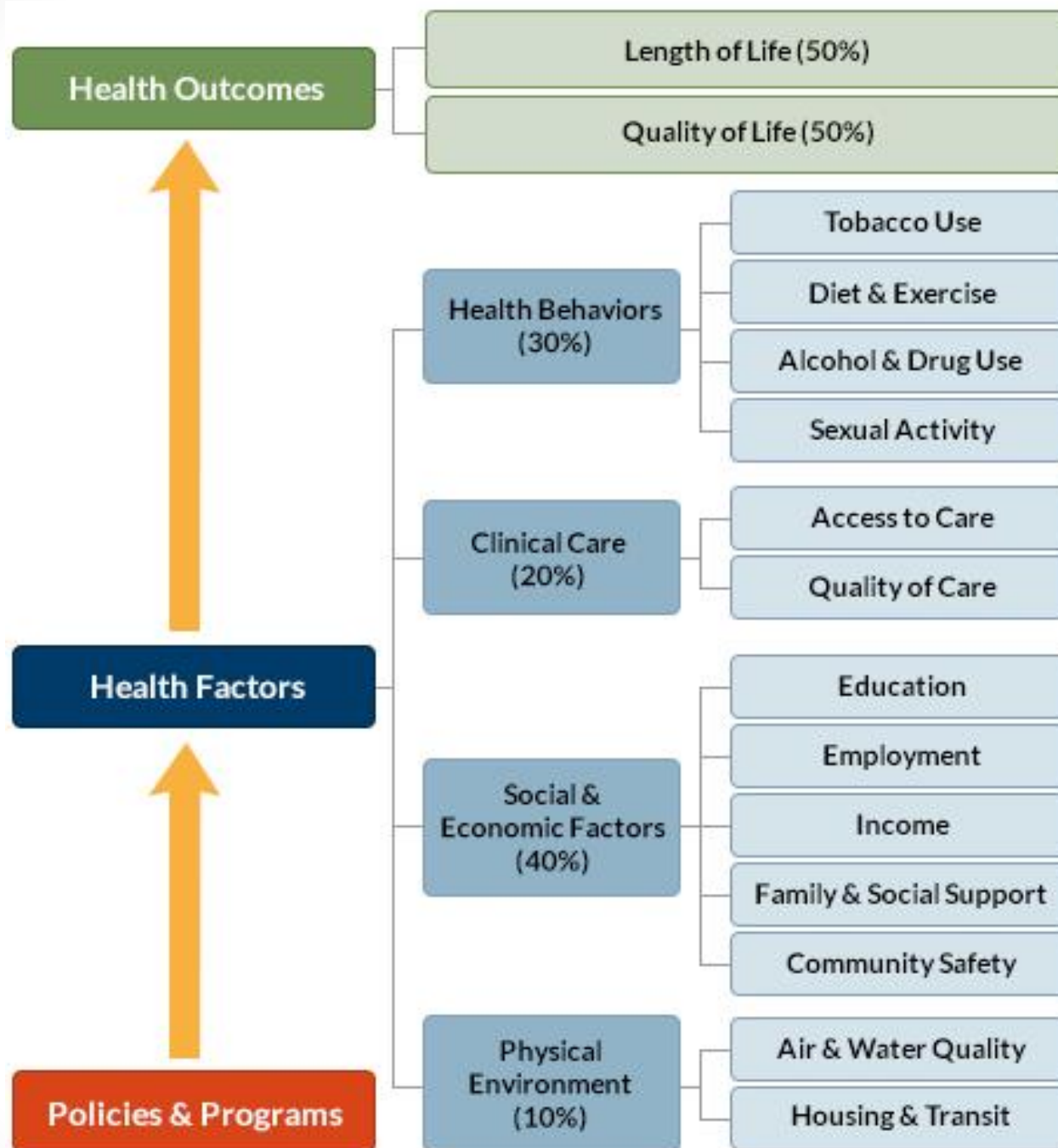
Policies and Programs

- **Health Outcomes** are defined as a change (or lack thereof) in the health status of a population which can be attributed to select **factors** or interventions

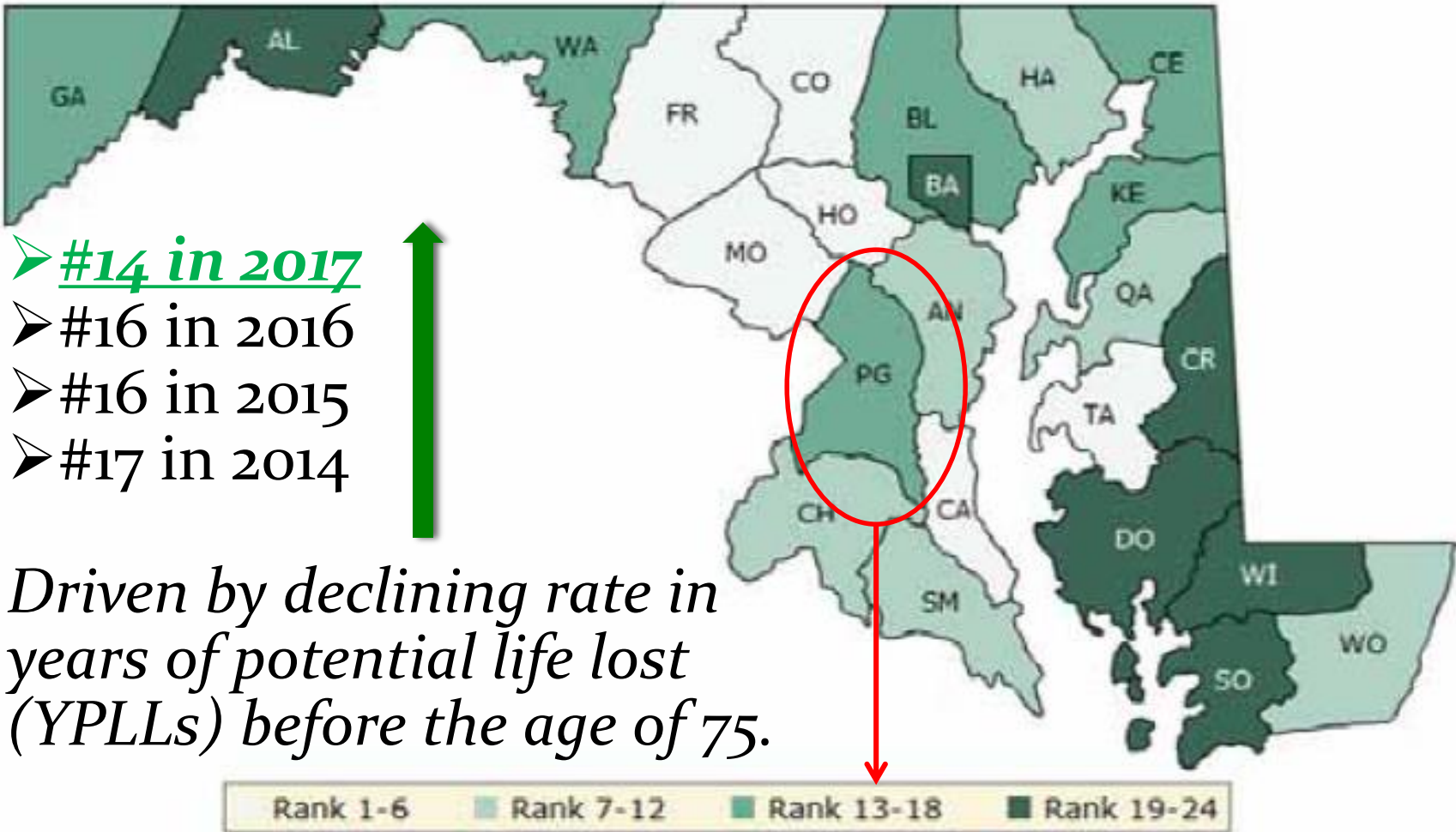
# Key Definitions: Factors







- **Health factors** are the economic and social conditions that influence differences in outcomes.
- Four (4) categories of health factors are:
  - Behavioral
  - Clinical Care
  - Social & Economic
  - Environmental



# Maryland **Health Outcome** Rankings: Prince George's County - 2017



# YPPLs: What Are the Principal Drivers?

- Prince George's County – Years of Potential Life Lost [premature death]
  - 2016 = 7000 yrs per 100,000 population
  - 2017 = 6800 yrs per 100,000 population
- Determinants (selected):
  - Infant mortality 
  - Child mortality 
  - Motor vehicle crash deaths 
  - Injury deaths overall 



# Inside the Numbers: Increasing Life Expectancy, 2007-2013

## LIFE EXPECTANCY RATE

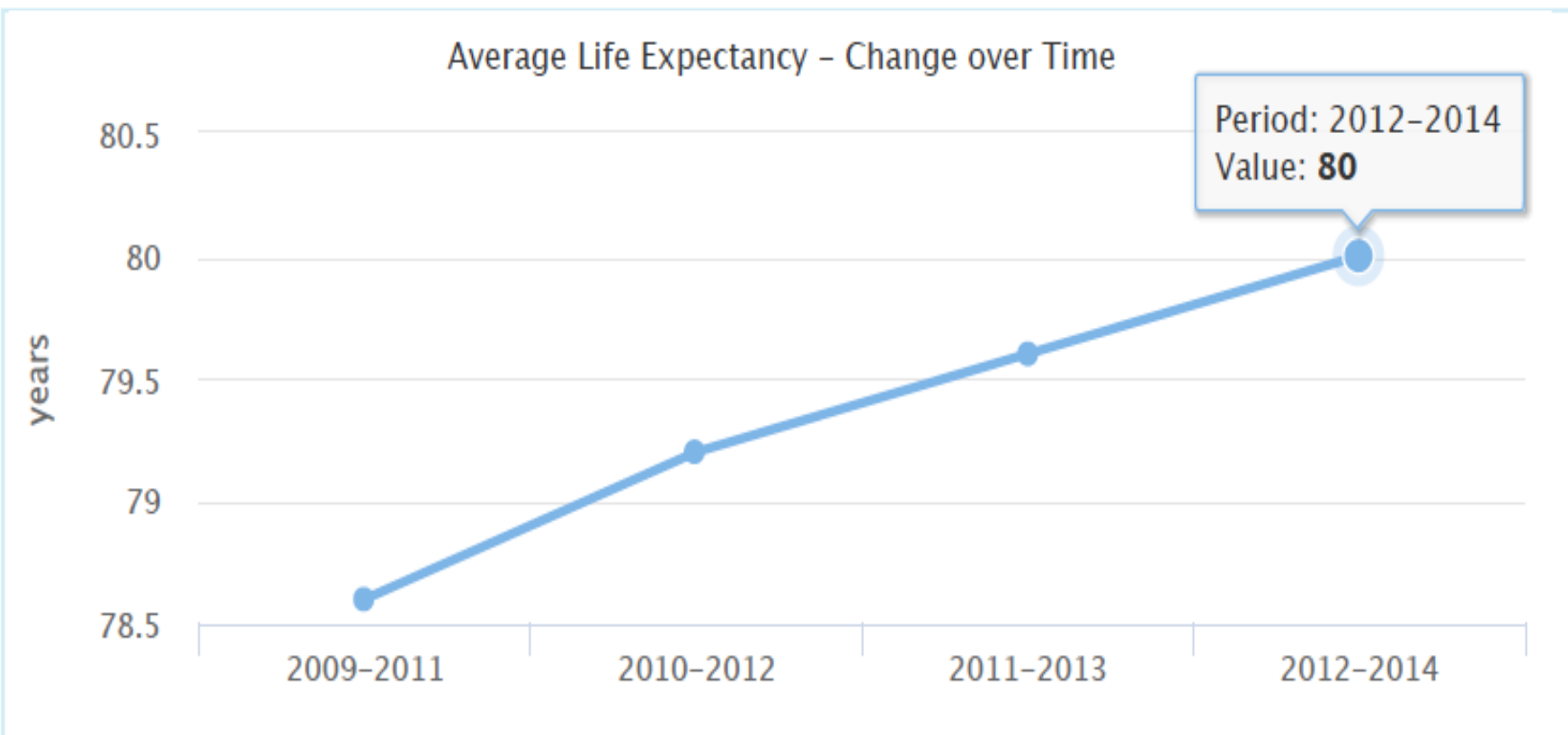
Year	Maryland	Prince George's	Montgomery	Baltimore City	U.S.A.
2007	78.1	77.5	83.1	72.0	77.7
2008	78.4	77.5	83.8	72.9	
2009	78.6	77.8	83.6	73.3	
2010	79.3	78.6	83.7	73.5	78.7
2011	79.5	79.2	84.1	73.9	
2012	79.5	79.2	84.1	73.9	
2013	79.6	79.6	84.3	73.9	78.8

**2.1  
yrs**

Source: Maryland Vital Statistics (A division of the State Department of Health and Mental Hygiene)

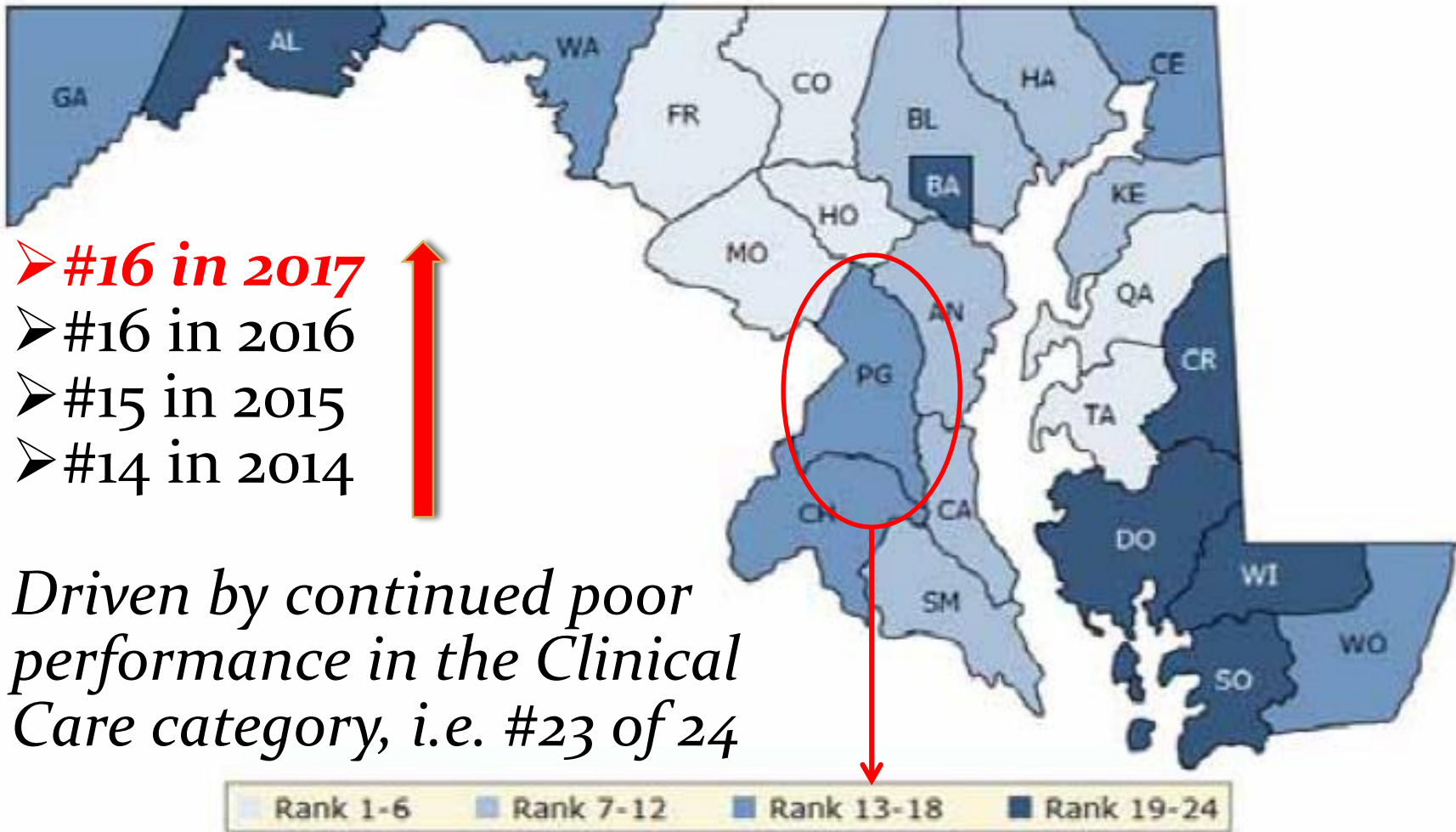
\* U.S. Figures are from the Center for Disease Control and Prevention

# County Life Expectancy Hits 80!!





# Maryland Health Factors Rankings: Prince George's County - 2017



# Inside the Numbers: Clinical Care Factors

Factor	Prince George's	Maryland Overall	US Top Performers
Uninsured	14%	9%	8%
Primary Care Physicians	1910:1	1130:1	1040:1
Dentists	1680:1	1350:1	1320:1
Mental Health Providers	970:1	490:1	360:1
Ambulatory Care Sensitive Admissions	43	46	36
Diabetes Monitoring	82%	85%	91%
Mammography Screening	61%	64%	71%

# Quality-of-Life in Prince Georges: Bottom Line...

- Epidemiologic unique constellation of contributing factors to health outcomes
- Confluence of population-based trends across multiple sectors, e.g., economic development, public safety, built environment, etc.
- Unprecedented statistical movement of index QOL metrics, e.g., YPPLs and life expectancy

# Regional Medical Center and Ambulatory Care Network: A Necessary Partnership



PRINCE GEORGE'S COUNTY

## Primary Healthcare Strategic Plan

Our Health Matters!

Access  
Quality  
Customer Service  
Health Promotion

