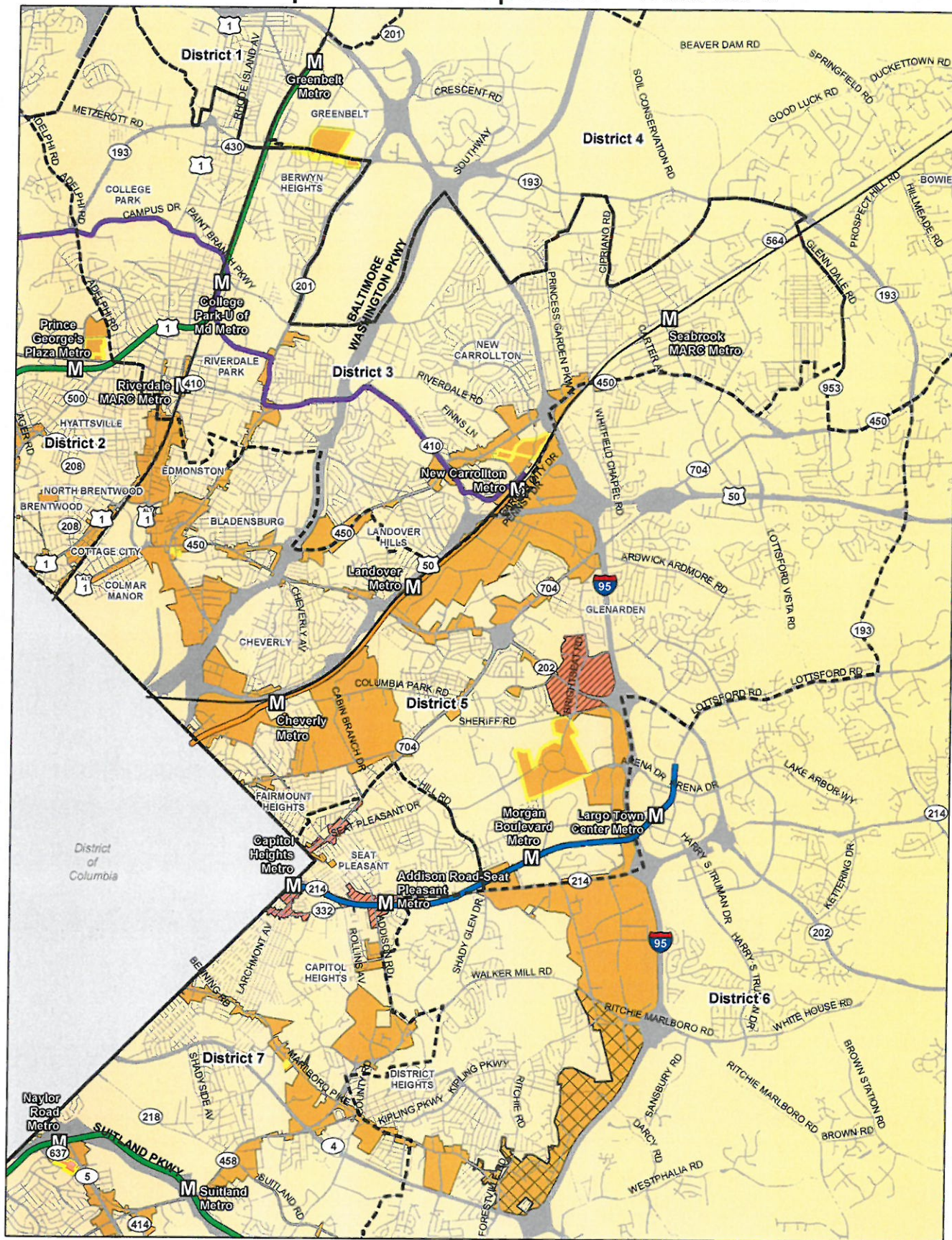


# Enterprise Zone Updates - District 5



### Enterprise Zone

- Proposed for redesignation - Expired 2019
- Expired 2019
- Proposed for new designation or expansion

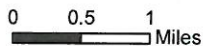
### Focus Area

- Proposed for redesignation - Expired 2019
- Expired 2019 - Redesignated as Enterprise Zone
- Proposed for new designation or expansion

### Metro Lines & Stations

- Proposed Purple Line
- Orange Line
- Green Line
- Blue Line
- Existing Metro Stations
- Camden and Penn Line

- Councilmanic Districts
- Roads
- County Boundary



This map may not be reproduced, stored in a retrieval system, or transmitted by any form, including electronic or by photo reproduction, without the express written permission of The Maryland-National Capital Park and Planning Commission. For more information, contact the Prince George's County Planning Department in Upper Marlboro, Maryland  
Date Created: 2/21/2020